

CCL06126

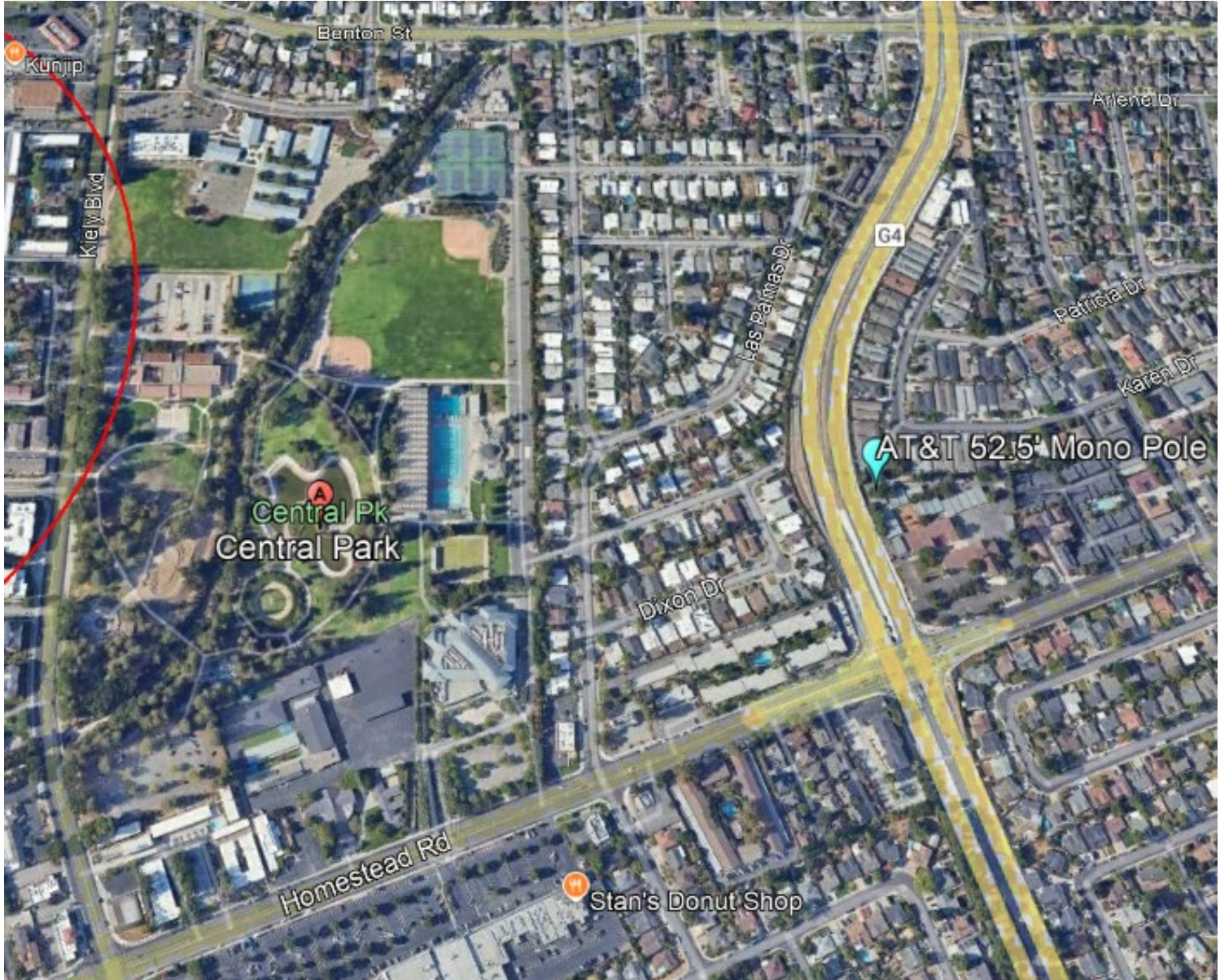
PMM
PC 1/15/25
RTC 24-1256
Item 2

- City of Santa Clara Planning Commission
- PLN23-0148
- January 15, 2025
- Steve Proo, Complete Wireless Consulting on behalf of AT&T

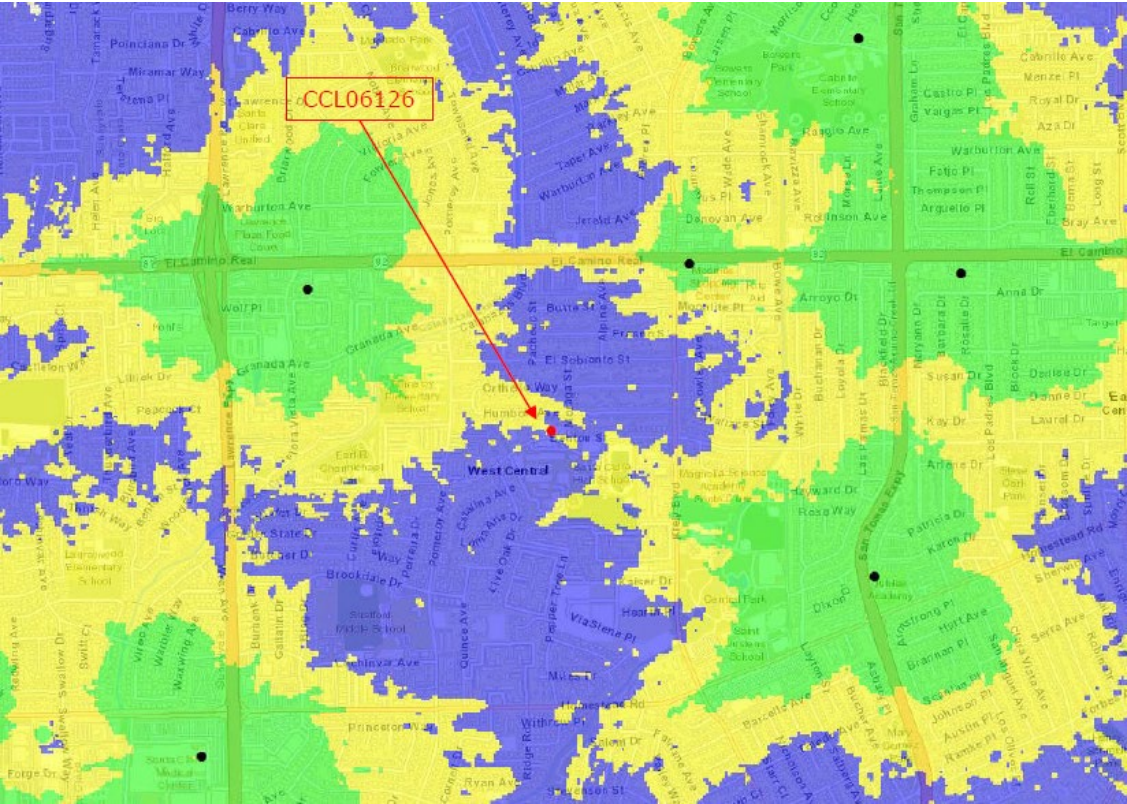
Map Provided by Public



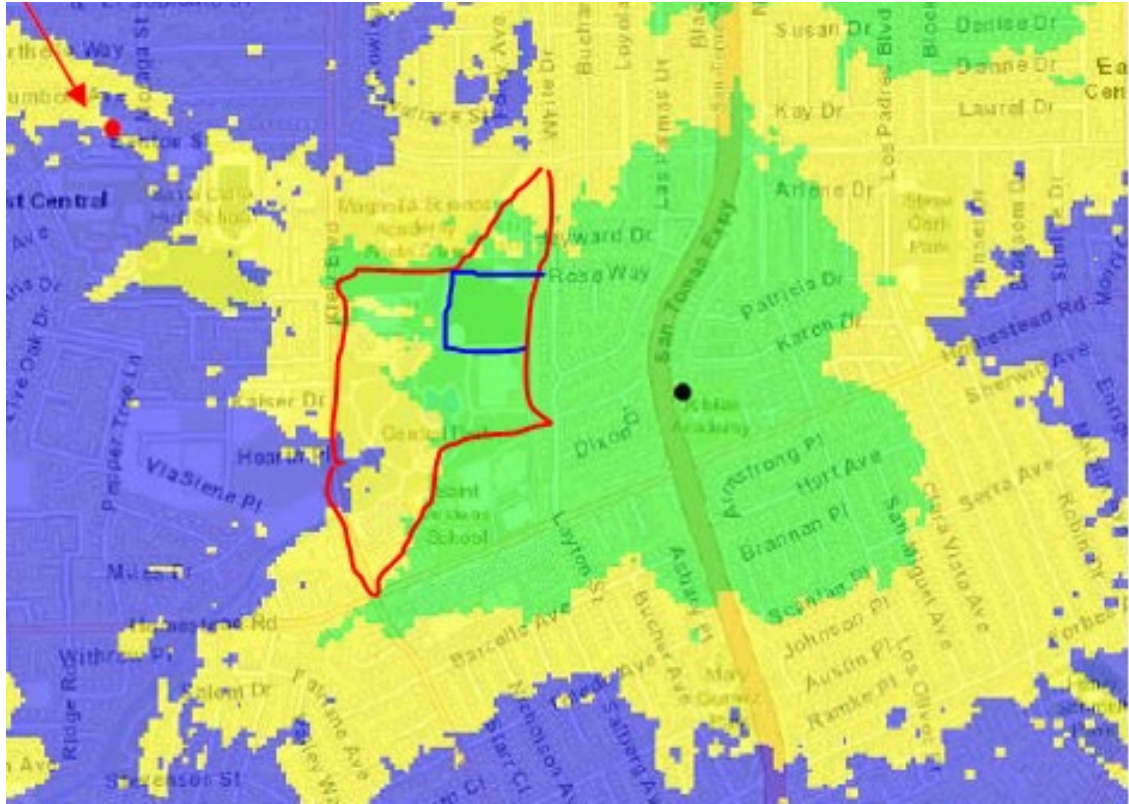
Google Map of Central Park



Current Coverage

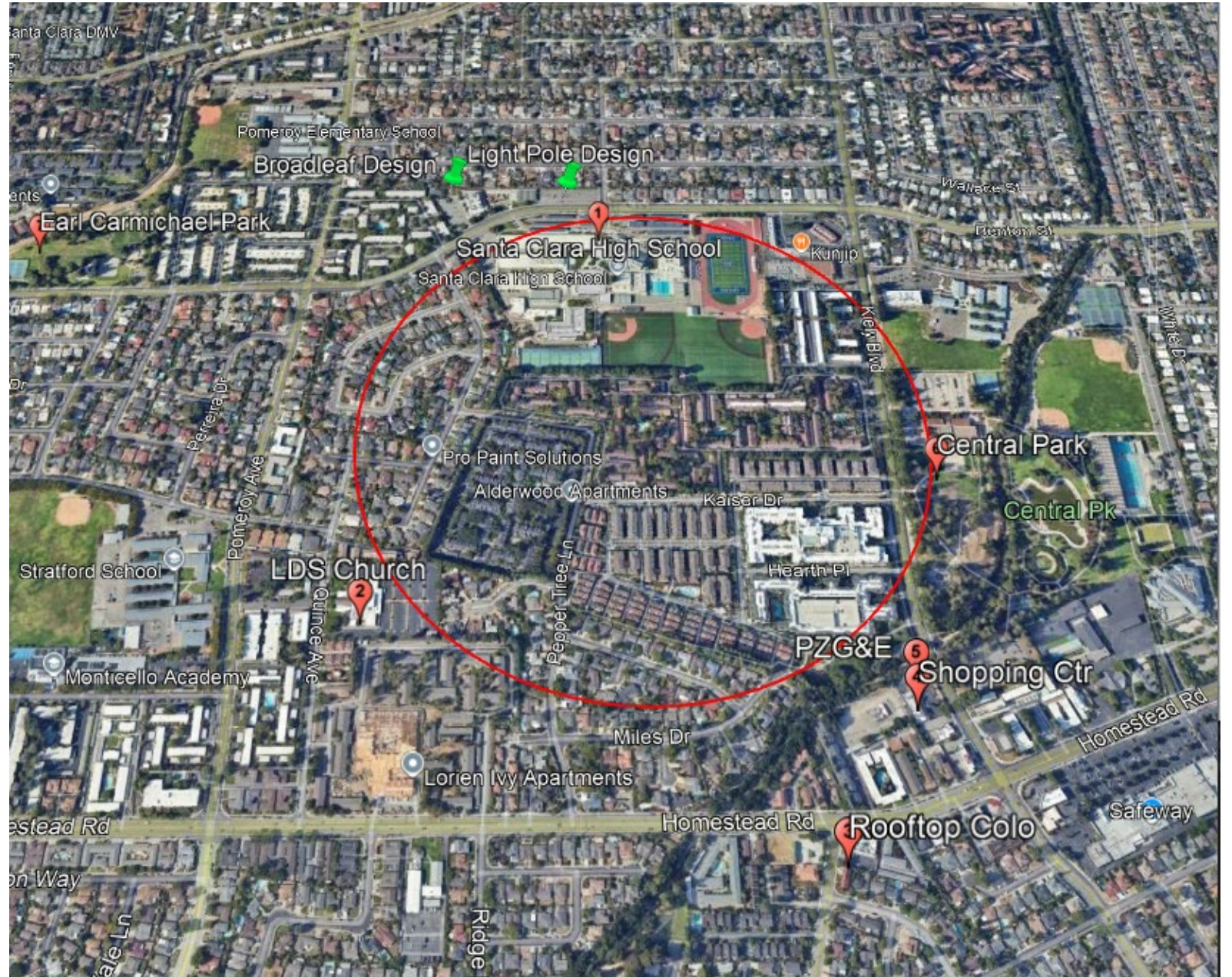


Zoomed Coverage – Central Park



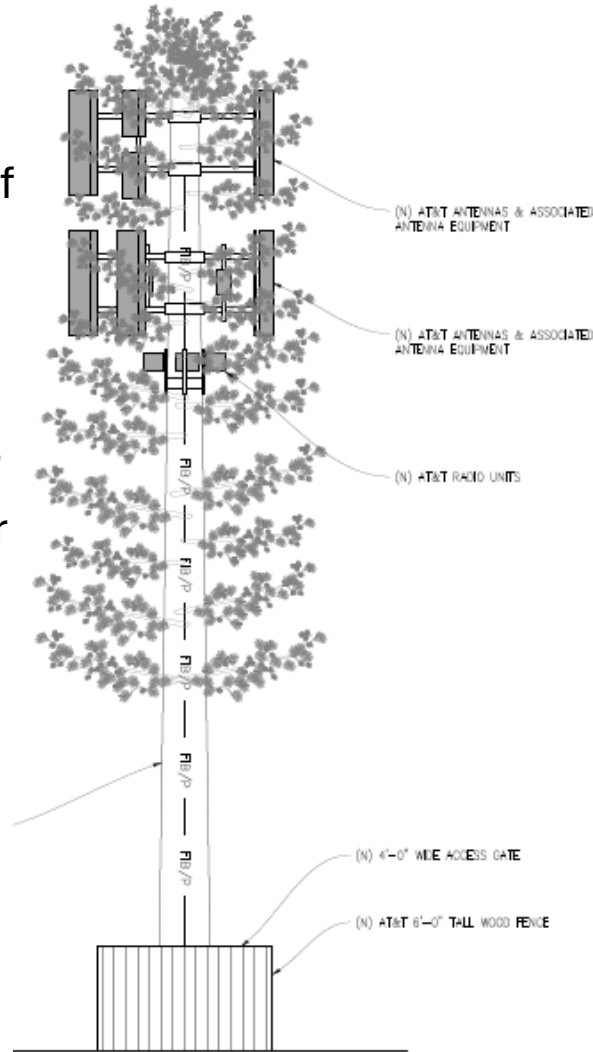
No Viable Alternative Locations

1. Santa Clara HS
3000 Benton
2. LDS Church
875 Quince
3. Rooftop Colo
2898 Homestead
4. Shopping Ctr
830 Kiely.
5. PG&E Substation
830 Kiely. (Behind)
6. Central Park
900 Kiely
7. Earl R.
Carmichael Park
3445 Benton

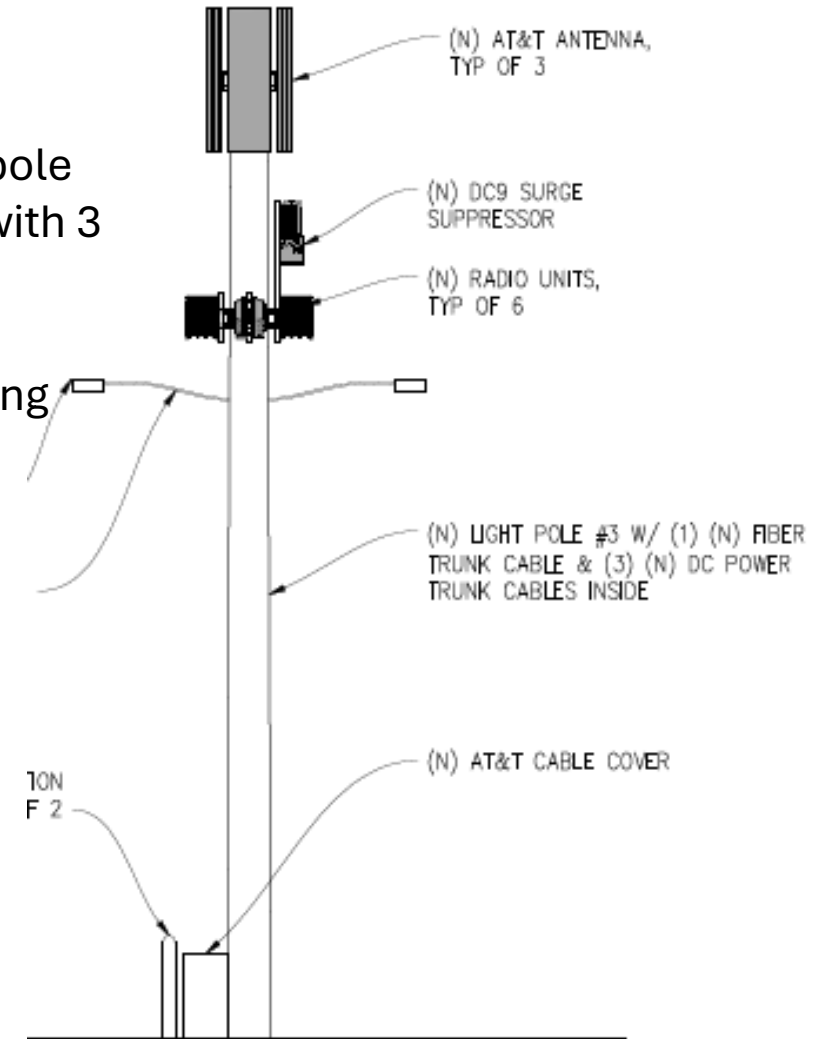


Project Designs

- 60' Mono-Broadleaf
- CL of 44' & 52'
- 25.5' diameter lease area for tower. Existing abandoned 20'x20' lease taken over for equipment

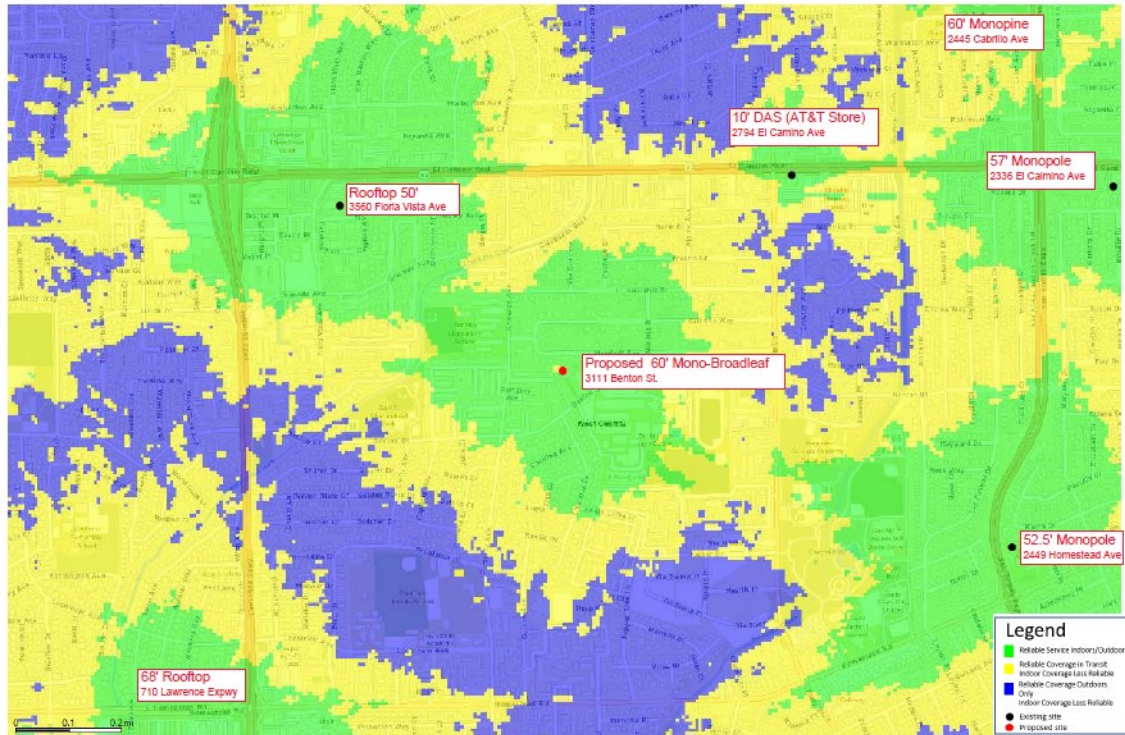


- Replace 2 existing light pole structures and replace with 3 new light poles 42'-6"
- CL of 41'-3" and 39'-6"
- Less intrusive with existing lease area of 20'x20'



Broadleaf Coverage

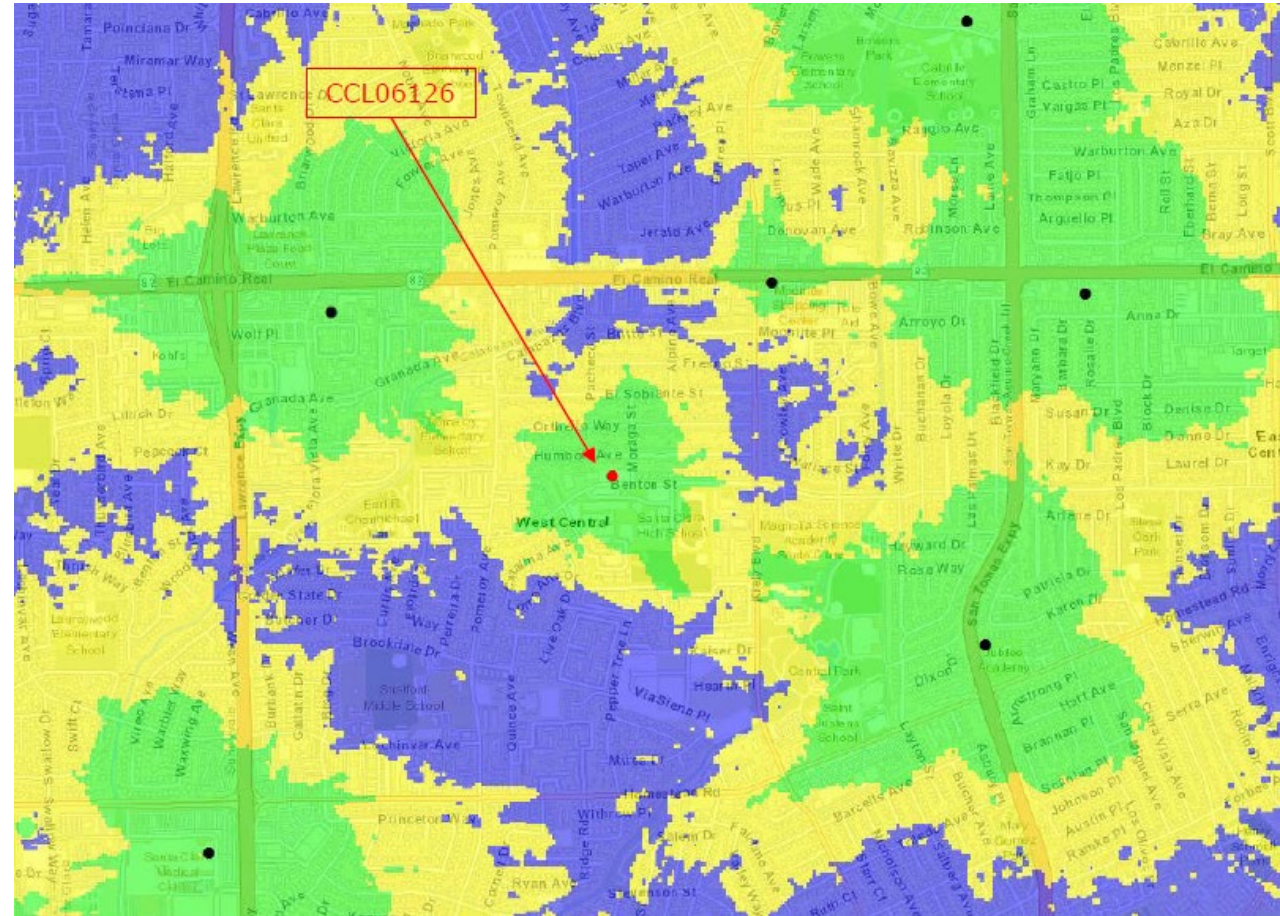
Existing Sites + CCL06126 LTE 700 Coverage



*AT&T PROPRIETARY — This information constitutes confidential trade secrets and commercial or financial information owned by AT&T and is shared for Critical Infrastructure Protection purposes only. It is exempt from disclosure under the Freedom of Information Act (5 U.S.C. 552), Exemptions (b)(3)(1)(4), and its disclosure is prohibited under the Trade Secrets Act (18 U.S.C. 1905), the Critical Infrastructure Information Act of 2002, 6 U.S.C. 133, and any State or local law requiring disclosure of information or records. This information must not be copied (whether mechanically or electronically through screen shots or other recording) or distributed to others not agreed upon by AT&T, but in all events do not copy or distribute to such others without notification pursuant to Executive Order 13260.



Light Pole Coverage



Legend

- Reliable Service Indoors/Outdoors
- Reliable Coverage in Transit
- Indoor Coverage Less Reliable
- Reliable Coverage Outdoors Only
- Indoor Coverage Less Reliable
- Existing site
- Proposed site

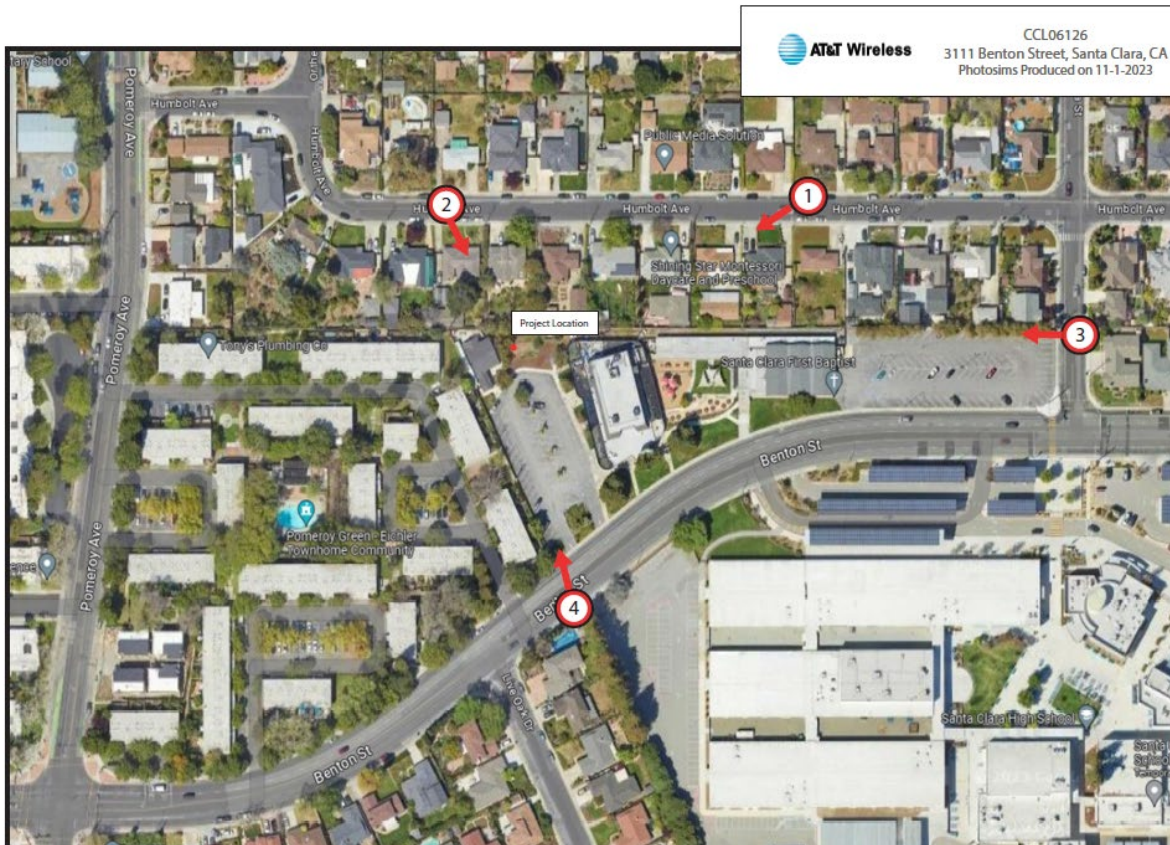
Concerns - Requests - Studies

60' Broadleaf

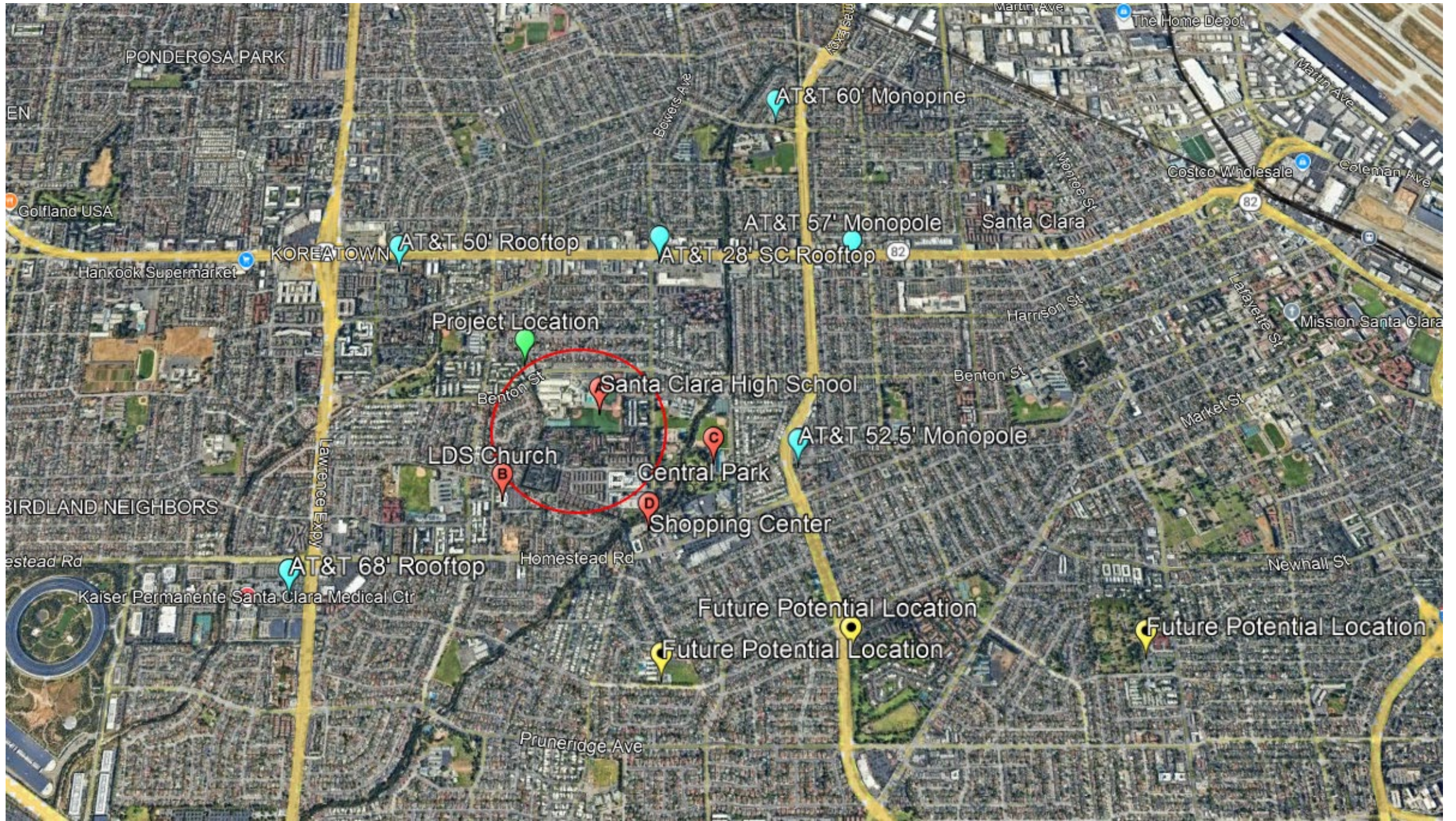
- Generator Removal
- Solar Shade Study
- Real Estate Study
- Nearby AT&T Locations
- Parks & Recreation

Parking Lot 3 Light Poles

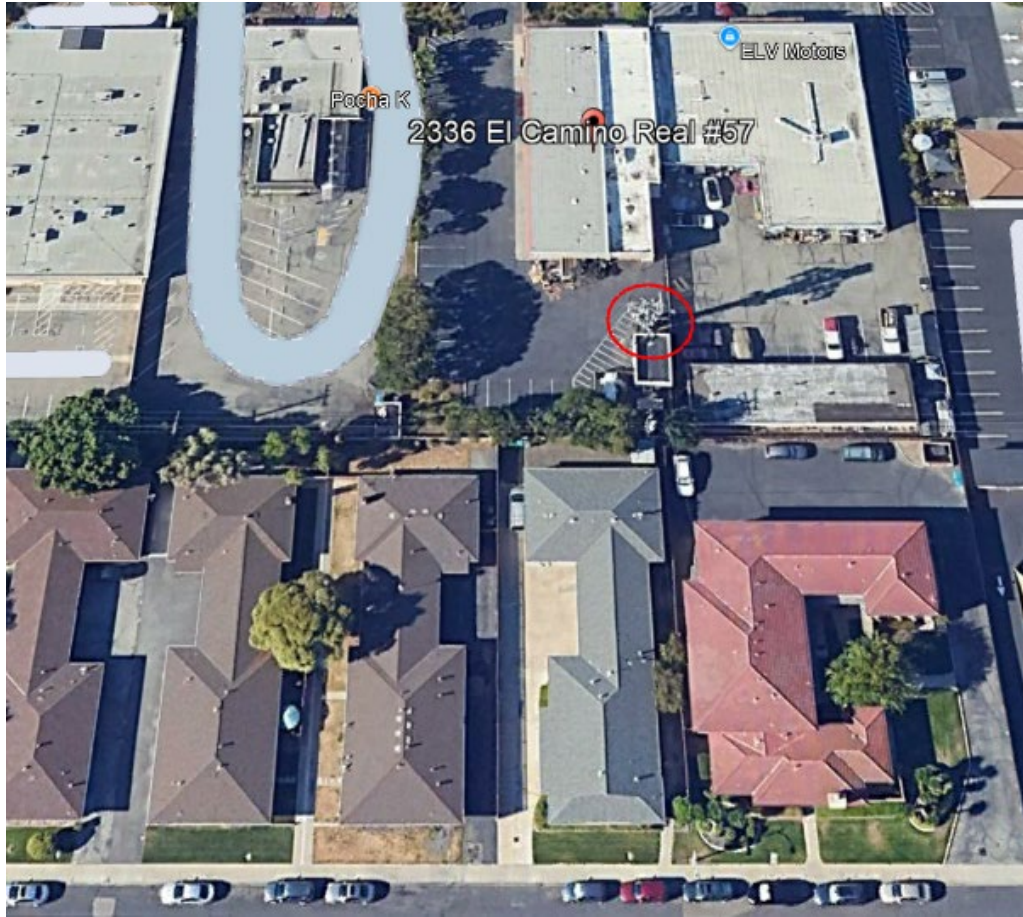
- 515' – Away
- Eliminates Fall Concerns
- FirstNet Site
- Eliminated ALL concerns
- Aesthetic Perspective



Overall Map

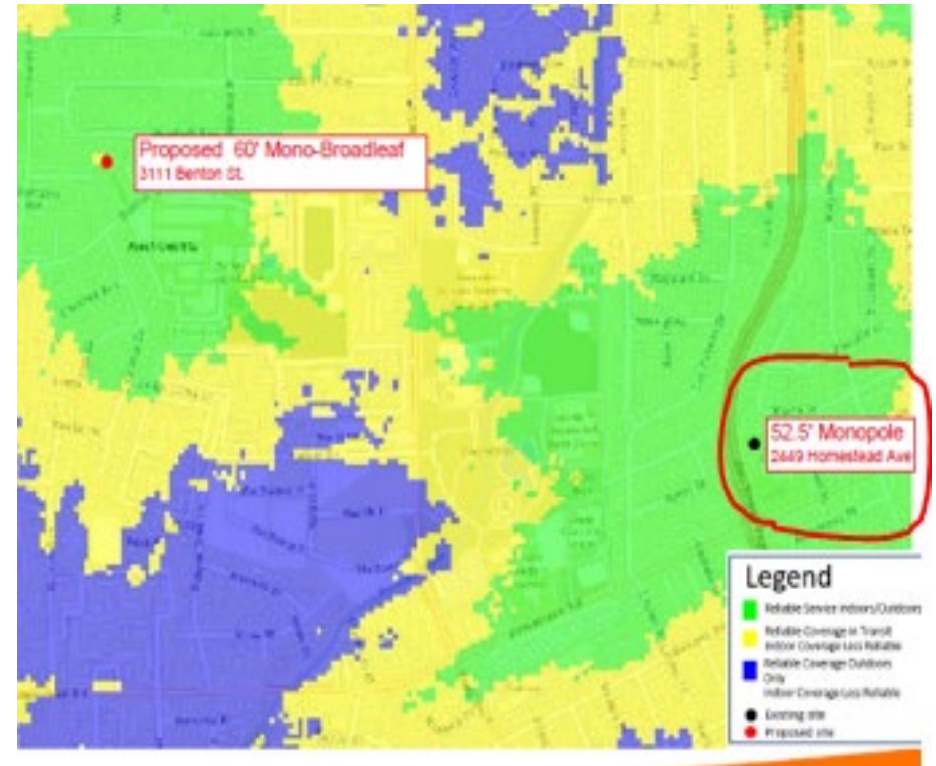


2336 El Camino 57' Mono Pole

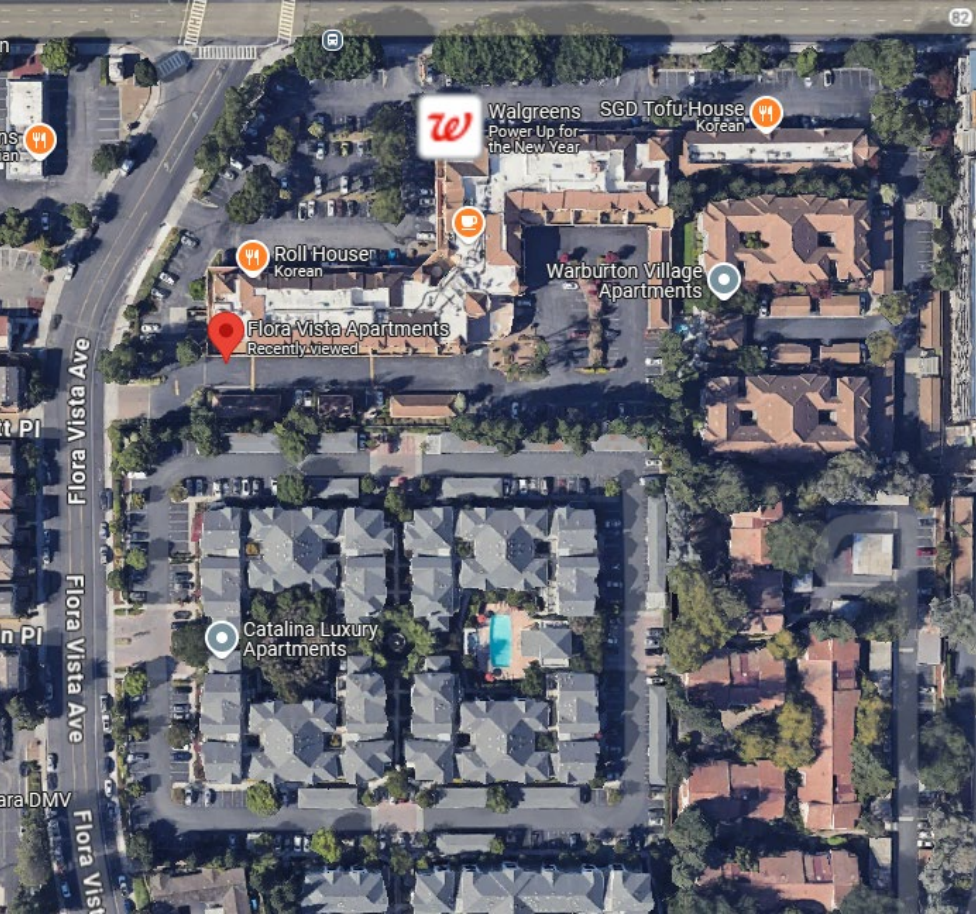




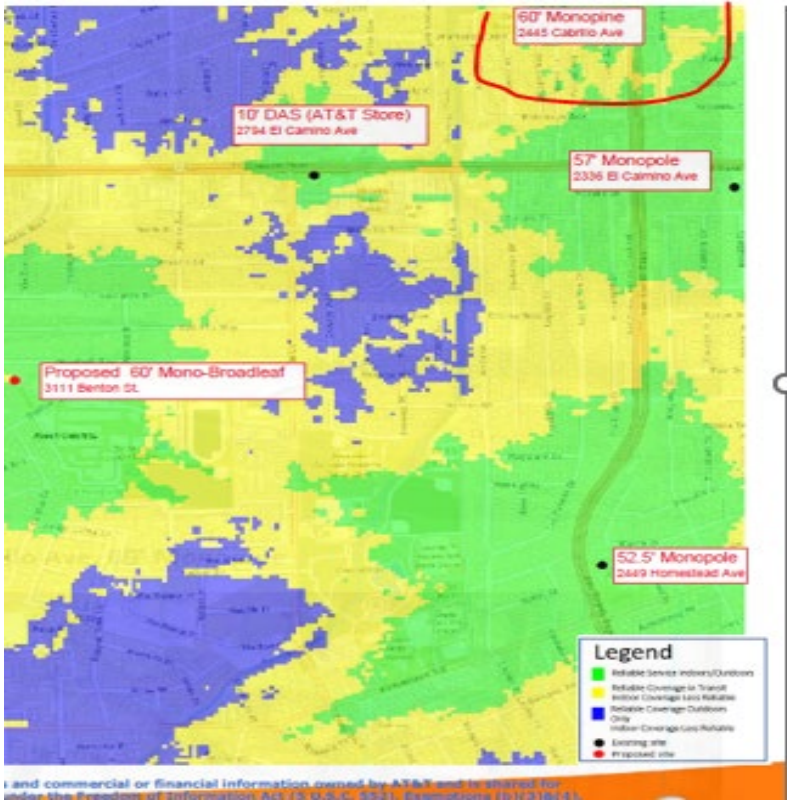
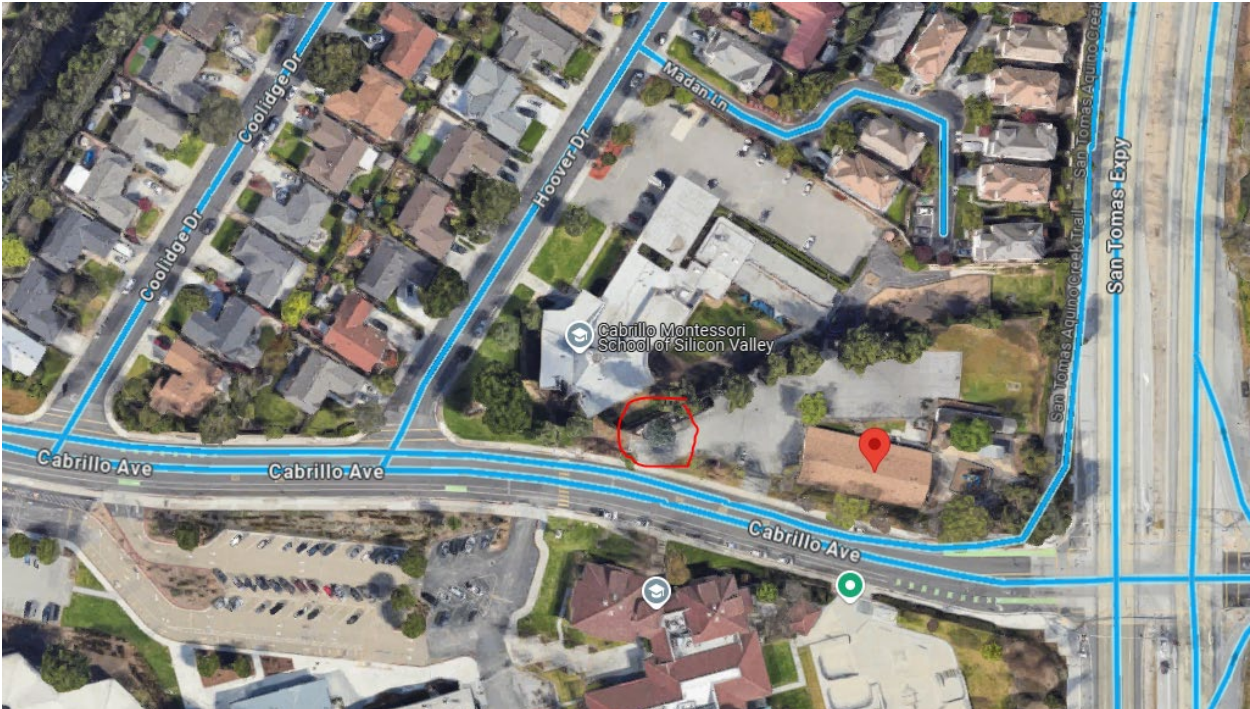
2499 Homestead Rd. 52'-5" Monopole



3560 Flora Vista Ave. 50' Rooftop



2445 Cabrillo Ave 60' Mono Pine



Mono Tree Photo Simulation # 1



view from Humbolt Avenue looking southwest at site

AdvanceSim
Photo Simulation Solutions
Contact (925) 202-8507

 **AT&T Wireless**

CCL06126
3111 Benton Street, Santa Clara, CA
Photosims Produced on 11-1-2023

Mono Tree Photo Simulation # 2

Proposed

Proposed AT&T
Installation



view from Humbolt Avenue looking southeast at site

AdvanceSim
Photo Simulation Solutions
Contact (925) 202-8507

 **AT&T Wireless**

CCL06126
3111 Benton Street, Santa Clara, CA
Photosims Produced on 11-1-2023

Mono Tree Photo Simulation # 3

Proposed



view from Moraga Street looking west at site

Mono Tree Photo Simulation # 4

Proposed



view from Benton Street looking north at site

AdvanceSim
Photo Simulation Solutions
Contact (925) 202-8507

 **AT&T Wireless**

CCL06126
3111 Benton Street, Santa Clara, CA
Photosims Produced on 11-1-2023

LP Photo Simulation # 1

Proposed



view from Benton Street looking northwest at site

LP Photo Simulation # 2

Proposed

Proposed AT&T
Installation

Proposed AT&T
Installation

Proposed AT&T
Installation



view from Benton Street looking northeast at site

LP Photo Simulation # 3

Proposed



view from Benton Street looking northeast at site

Photo Simulation # 4

Proposed



view from Humboldt Avenue looking southeast at site

Complies with FCC Guidelines



Radio Frequency – Electromagnetic Energy (RF-EME) Compliance Report

Prepared For AT&T Mobility, LLC

- Licensed Professional Engineer (M. McGuire @ EBI Consulting) confirms that the Cumulative radio frequency exposure will be well below FCC public limits at ground level and all nearby rooftops. 36.24%
- Denial based on RF exposure preempted by federal law.

Site name:	CCL06126
FA#:	15376635
USID:	298767
Site ID:	CCL06126
EBI Project Number	298767
Address:	3111 Benton Street, Santa Clara, California
County:	Santa Clara
Latitude:	37.3469
Longitude:	-121.9848
Structure Type:	Roof
Ordered by:	Complete Wireless Inc
Pace Job:	MRSFR073883
Report Writer:	Rebecca Sinisgalli
Report Date:	19 November 2024

Reviewed and Approved by:



sealed 19nov2024

Michael McGuire
Electrical Engineer
mike@h2dc.com



Statement of Compliance

AT&T Mobility Compliance Statement: Based on the information collected, AT&T Mobility will be Compliant with FCC Rules and Regulations at the nearest walking surface if recommendations in the Compliance Summary are implemented.

Complies with Santa Clara Noise Regulations

- Licensed Professional Engineer, Dario Gotchet @ Bollard Acoustical Consultants confirms that the maximum noise decibels are below 55db for daytime and below 50db for night-time hours.
- DB from closest residence is 47db & 49db.

Environmental Noise Assessment

CCL06126 AT&T Cellular Facility

City of Santa Clara, California

BAC Job #2023-021

Prepared For:

Complete Wireless Consulting

Attn: Steve Proo
2009 V Street
Sacramento, CA 95818

Prepared By:

Bollard Acoustical Consultants, Inc.



Dario Gotchet
Principal Consultant
Elected Member, Institute of Noise Control Engineering (INCE)

September 18, 2024