

POST MEETING MATERIAL

Item 8A

RTC 24-1179



# **Santa Clara Vision Zero Plan**

## **BPAC Meeting #2**

**January 27, 2025**



# Agenda

1. Background on Vision Zero
2. Project Timeline
3. Community Engagement
  - Outreach Events
  - Online Survey
4. Collision Data Analysis Summary
5. Next Steps & Ways To Stay Involved



*Vision Zero "Share the Road" corridor sign*

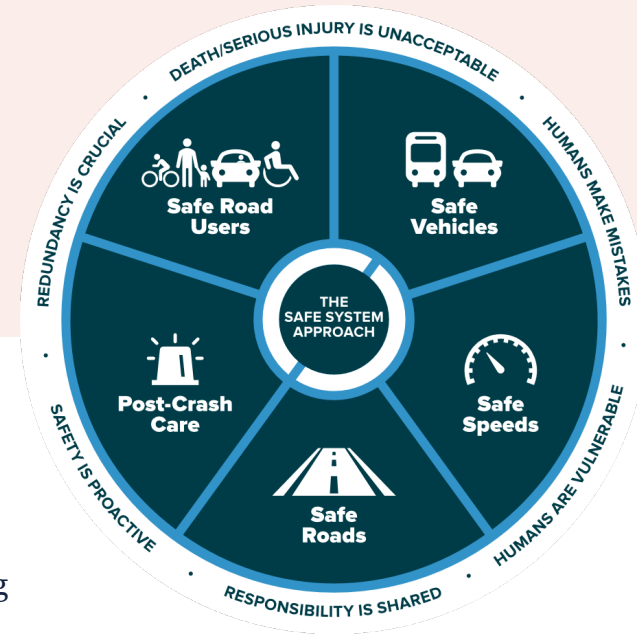


# What is Vision Zero?

**Vision Zero** is a strategy to **eliminate all traffic fatalities and severe injuries** while promoting safe, healthy, and equitable mobility for all

## Incorporates the **Safe Systems Approach**

- Acknowledges that fatal and severe injury collisions are unacceptable
- Accommodates human mistakes
- Recognizes that humans are vulnerable, therefore critical to design transportation system that is focused on providing redundancy and lessening of impact to tolerable levels





# Project Timeline

Project Start

Collision Data Collection /Analysis

Countermeasure Toolbox

Transportation Equity Assessment

Implementation Plan/Programs

Public Engagement



Community Surveys



Event Tabling



Community Workshops



BPAC & Commission Meetings

Draft Plan



City Council Adoption  
of Final Plan

Fall 2024

Winter  
2024

Spring  
2025

Summer  
2025

Fall  
2025

Winter  
2025



# Community Engagement

- Project Website
- Community Surveys
- Outreach Events/Pop-ups
- Vision Zero Working Group Meetings
- Community Workshops
- BPAC Meetings
- Fact Sheets, Social Media, Flyers
- Corridor Signage
- Bus shelter advertisement along El Camino Real





# Outreach Events

- Top safety challenges:
  - Drivers failing to stop at intersections
  - Cyclists disregarding red lights and stop signs
  - Vehicular speeding and distracted driving
  - Insufficient safe bike lanes
  - Poor safety practices among teen and young adult cyclists
  - Unsafe intersections near schools



Vision Zero Outreach Events

# Online Survey

- **Survey #1 launched September 14 thru December 9, 2024**
- **533 Contributions on the Safety Map**
- **132 Unique Contributors**



## Santa Clara Vision Zero

Public Engagement

### Welcome!

What can we do to make Santa Clara streets safer? The City of Santa Clara would like to hear about your experiences driving, biking, walking, or using other transportation modes within the City. A citywide traffic safety study is underway to identify opportunities for safety improvements throughout Santa Clara, and community input is important as we work to address the safety challenges that users face.

There are two parts of this survey. Please complete both sections:

- **Safety Map:** Use the Add Marker button to add icons onto the interactive map and leave a comment about the safety challenge(s) you experience within Santa Clara.
- **Safety Survey:** Take a quick survey below which takes about 5 minutes to complete.

All responses will remain confidential. However, your input on the Safety Map will be visible to everyone. Please do not leave any personal information such as your name, address, email, or phone number.

Thank you for your time and valuable input into this important safety study!

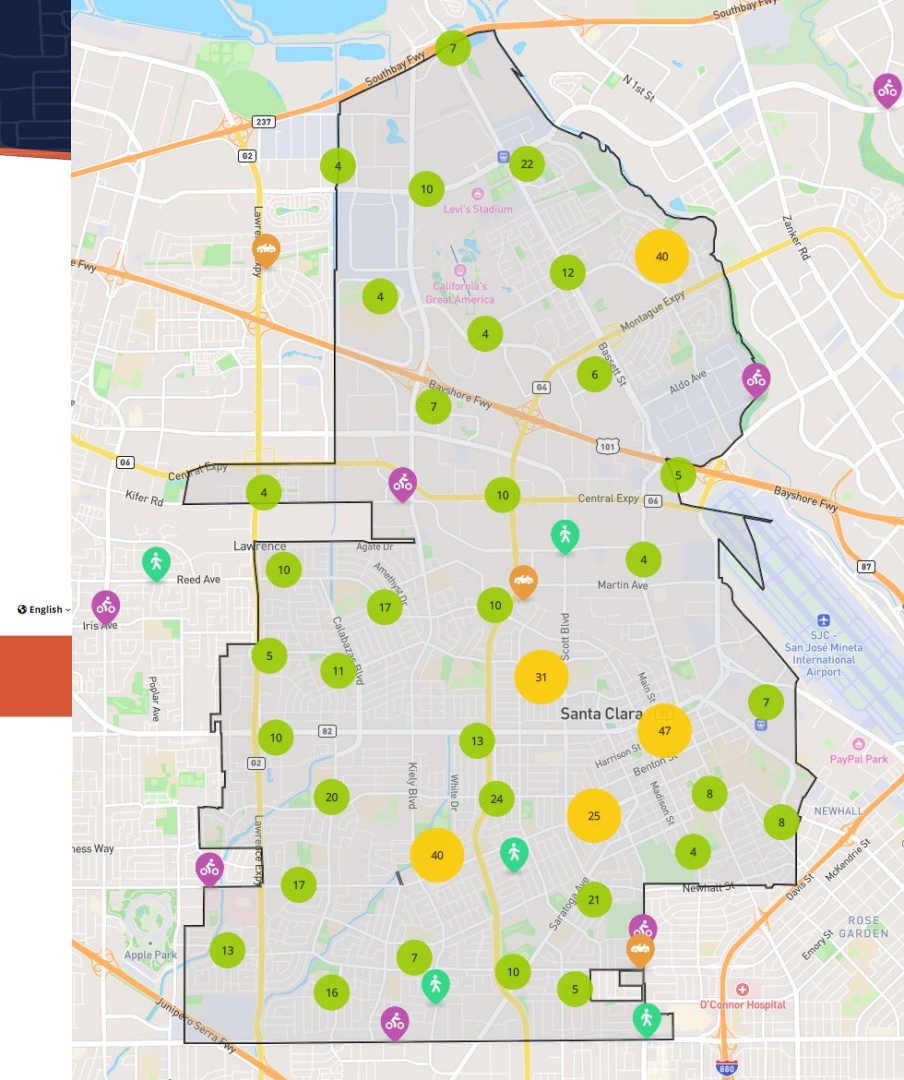
For more information and details about this effort, please visit the [Vision Zero project website](#) or contact the project team at [SantaClaraVisionZero@kimley-horn.com](mailto:SantaClaraVisionZero@kimley-horn.com)

Closed

### Safety Map

Place your traffic safety concerns within Santa Clara on the map below. Locations near the City border may be under the jurisdiction of a neighboring City. Any traffic safety concerns under the jurisdiction of another agency will be forwarded to the responsible agency.

533 Safety Contributions

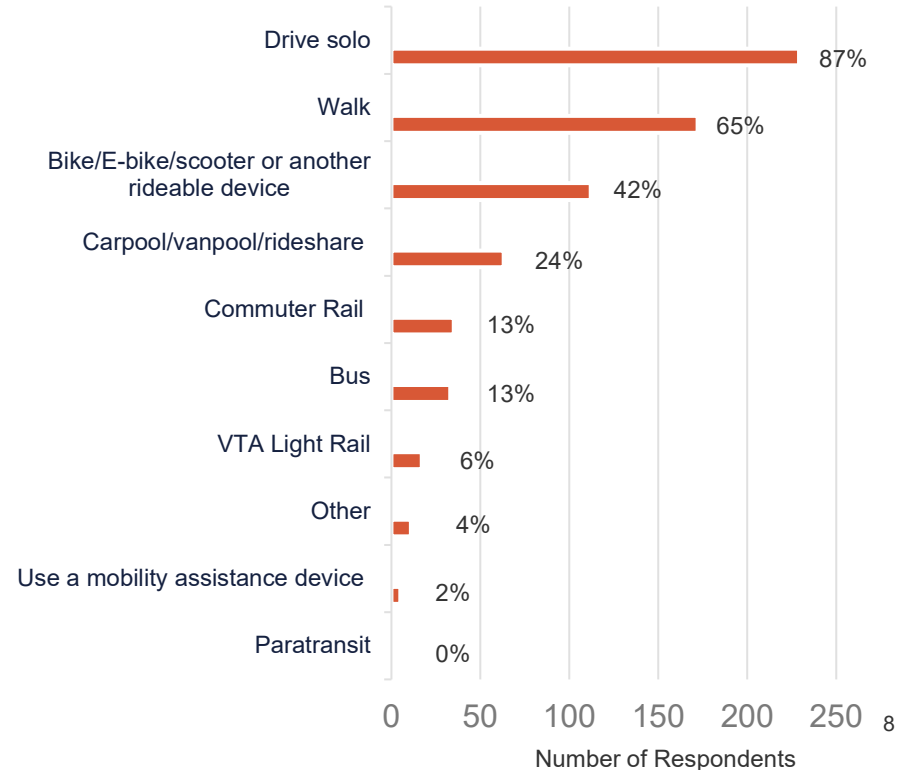




# Online Survey (cont.)

- **264 Responses received.**
- Primary concerns include “vehicle speeding”, “drivers failing to yield to pedestrians and cyclists”, and “red-light running or not stopping at stop signs”.
- 66% indicated they are willing to shift toward active transportation options, such as walking or cycling, if traffic safety improved.
- 94% expressed willingness to adjust their driving behavior, including reducing speeds, to help minimize the risk of traffic collisions.

Describe your transportation mode







# **Collision Data Analysis Summary**



# Collisions by Severity

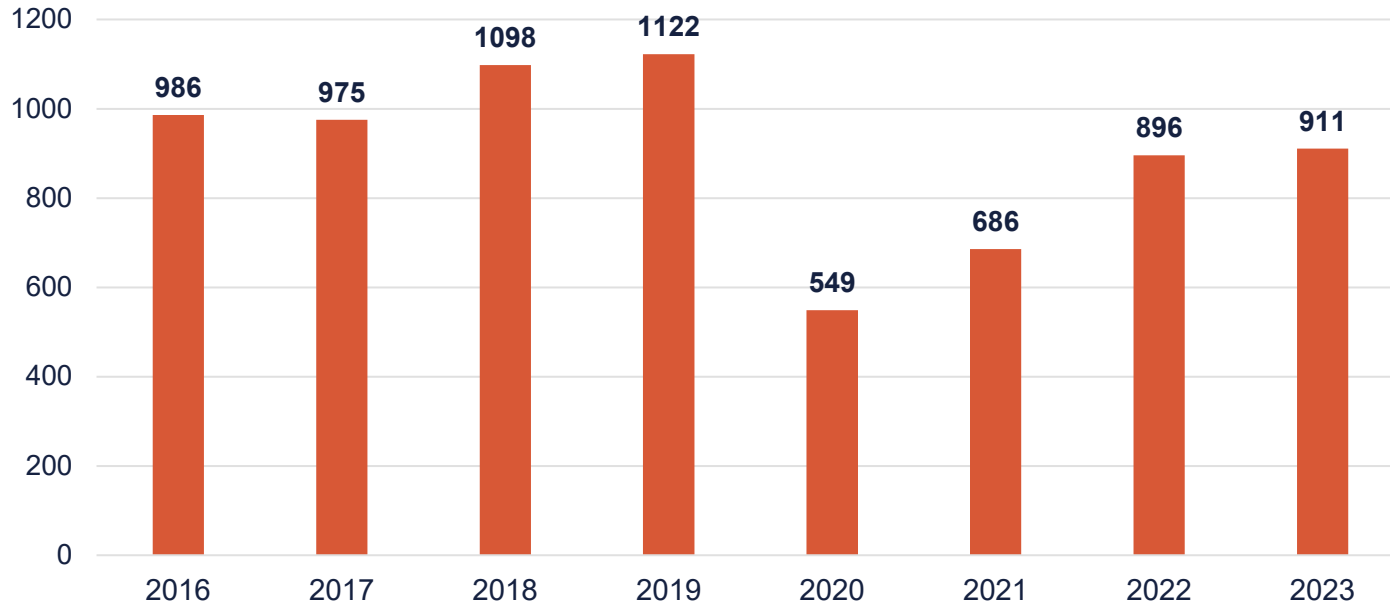
Severity	Signalized Intersection		Unsignalized Intersection		Roadway Segment		Total	
	Collisions	%	Collisions	%	Collisions	%	Collisions	%
Fatal	9	0.1%	28	0.4%	12	0.2%	49	1%
Severe Injury*	32	0.4%	60	1%	24	0.3%	116	2%
Other Visible Injury	240	3%	419	6%	216	3%	875	12%
Complaint of Pain	436	6%	660	9%	334	5%	1,430	20%
Property Damage Only	973	13%	2,132	30%	1,648	23%	4,753	66%
<b>Total</b>	<b>1,690</b>	<b>23%</b>	<b>3,299</b>	<b>46%</b>	<b>2,234</b>	<b>31%</b>	<b>7,223</b>	<b>100%</b>

\*Severe Injury: An injury other than a fatal injury which results in broken bones, dislocated or distorted limbs, severe lacerations, or unconsciousness at or when taken from the collision scene. It does not include minor laceration. (California Collision Investigation Manual 2003)



# Collision Trends

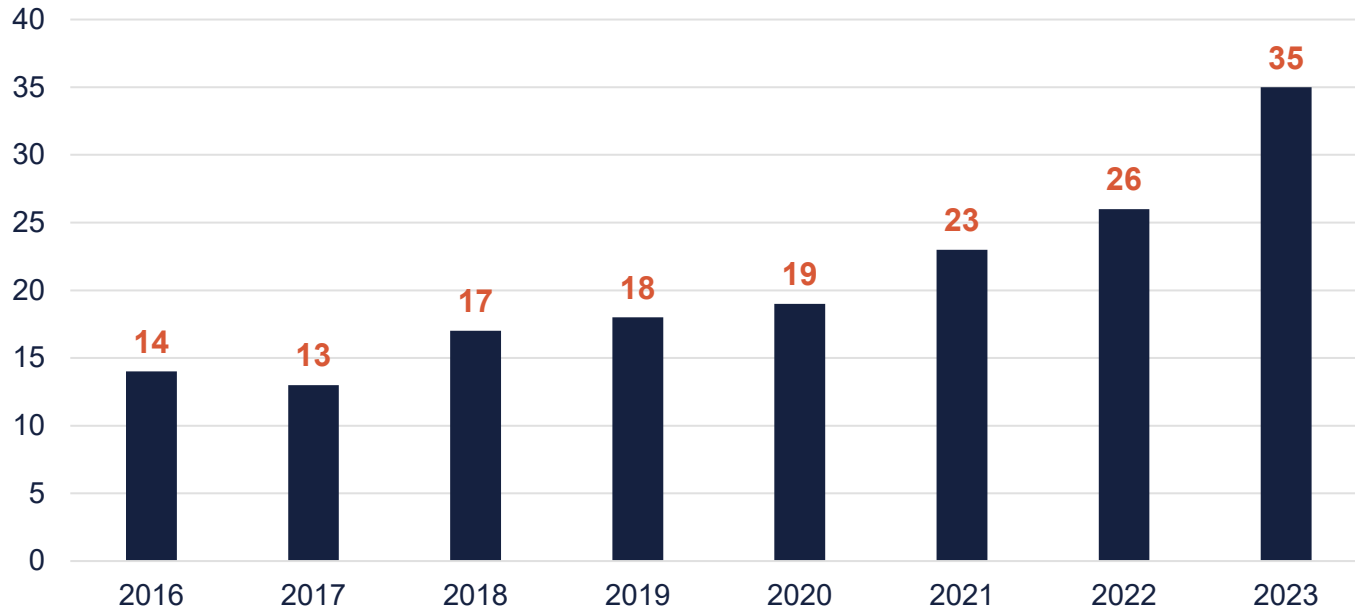
Total Collisions by Year (2016-2023)





# Collision Trends (cont.)

Total Fatal + Severe Injury Collisions (KSI) by Year (2016-2023)

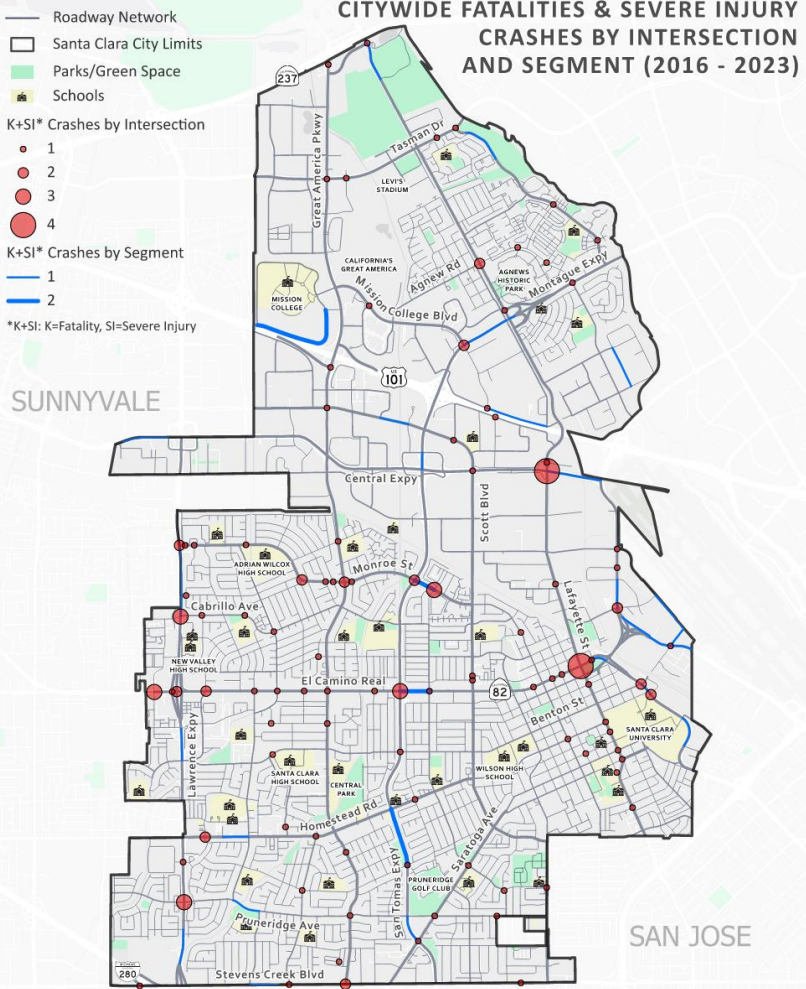




# Injury Severity by Mode

Mode	Fatal (K)	Severe Injury (SI)	Other Injury	Percent of all Collisions	Percent of all K+SI Collisions
Motor Vehicle Only	26	75	1,907	27.8%	61.2%
<b>Vehicle-Bicycle</b>	2	20	204	<b>3.1%</b>	<b>13.3%</b>
<b>Vehicle-Pedestrian</b>	21	21	192	<b>3.2%</b>	<b>25.5%</b>
Total	49	116	2,303	34.1%	100%

**CITYWIDE FATALITIES & SEVERE INJURY  
CRASHES BY INTERSECTION  
AND SEGMENT (2016 - 2023)**



**Top Fatal & Severe Injury Collision Intersections:**

- El Camino Real / Lafayette St
- Central Expwy / Lafayette St
- Lawrence Expwy / Cabrillo Ave
- Lawrence Expwy / Pruneridge Ave
- El Camino Real / San Tomas Expwy
- El Camino Real / Halford Ave
- Monroe St / Los Padres Blvd

**Top Fatal & Severe Injury Collision Segments:**

- San Tomas Expwy (Homestead Rd to Forbes Ave)
- Mission College Blvd (Our Lady Wy to Wildwood Ave)
- Monroe St (San Tomas Expwy to Los Padres Blvd)
- El Camino Real (San Tomas Expwy to Los Padres Blvd)



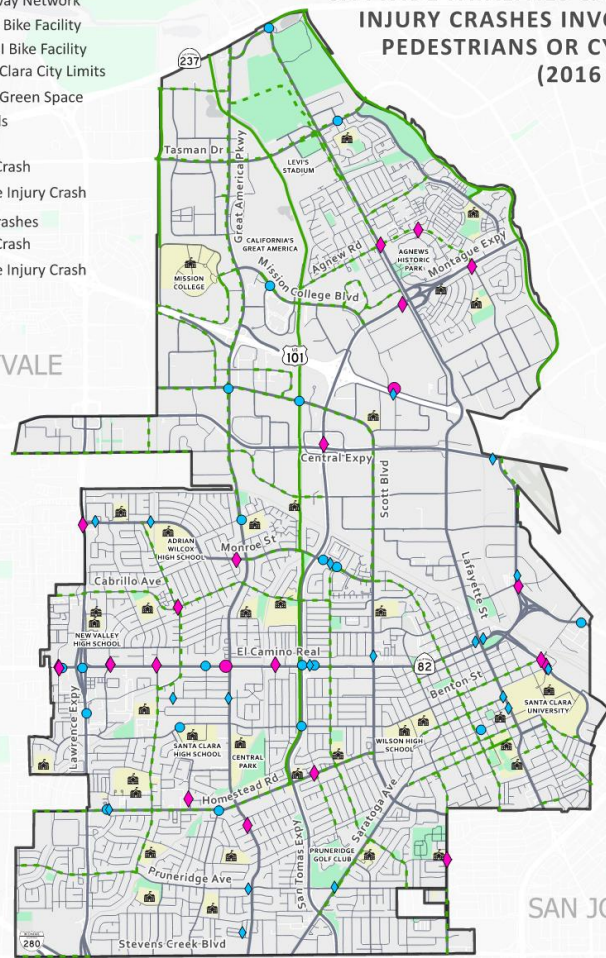
**City of Santa Clara**  
The Center of What's Possible

Source: City of Santa Clara Collision Records Database, 2016-2023

# CITYWIDE FATALITIES & SEVERE INJURY CRASHES INVOLVING PEDESTRIANS OR CYCLISTS (2016 - 2023)

- Roadway Network
- Class I Bike Facility
- - - Class II Bike Facility
- Santa Clara City Limits
- Parks/Green Space
- 🏫 Schools
- Bike Crashes**
- Fatal Crash
- Severe Injury Crash
- Pedestrian Crashes**
- ◆ Fatal Crash
- ◆ Severe Injury Crash

SUNNYVALE



SAN JOSE



**City of Santa Clara**  
The Center of What's Possible

Source: City of Santa Clara Collision Records Database, 2016-2023



# High-Injury Network (HIN)

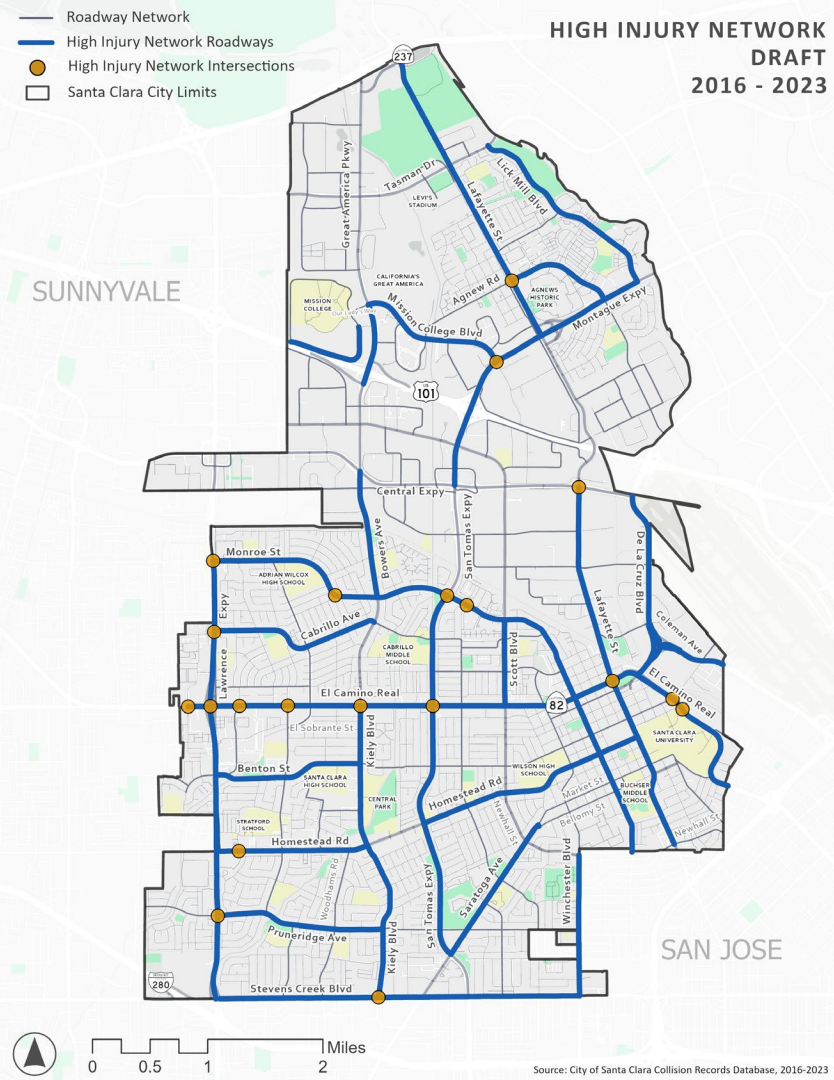
- Identifies stretches of roadways with highest concentration of collisions resulting in fatal or serious injuries (KSIs).
- Tool for city planners and engineers to prioritize locations for safety improvements
- Focusing on high-risk areas can significantly reduce the KSIs in alignment with Vision Zero



Approximately **60% of all collisions** occurred on **16% of road network** (includes County expressways & El Camino Real).

Draft HIN contains 23 high-injury street segments & top 20 intersections (*listed north to south*):

- **Lafayette St** (3): Agnew Rd, Central Expwy, El Camino Real
- **Montague Expwy** (1): Mission College Blvd
- **Monroe St** (4): Central Expwy, Francis Ave, San Tomas Expwy, Los Padres Blvd
- **Cabrillo Ave** (1): Lawrence Expwy
- **El Camino Real** (8): Halford Ave, Lawrence Expwy, Flora Vista Ave, Pomeroy Ave, Kiely Blvd, San Tomas Expwy, Benton St, Palm Dr
- **Homestead Rd** (1): Bing Dr
- **Pruneridge Ave** (1): Lawrence Expwy
- **Stevens Creek Blvd** (1): Kiely Blvd





# Next Steps

- Continuing Community Engagement
  - Online Survey – launch in February
  - Vision Zero Working Group Meeting #2 – *February 10<sup>th</sup>*
  - Community Workshop #2 – *March 5<sup>th</sup> (in-person)*
  - BPAC Meeting – *March*
  - Pop-up events in April & May – Dates TBD
- Countermeasure Toolbox
- Priority Projects, Programs, and Policies
- Transportation Equity Assessment



# Join Our Mission to End Traffic Fatalities!

1. Sign up for project updates  
[SantaClaraCA.gov/VisionZero](https://SantaClaraCA.gov/VisionZero)
2. Send us an email  
[SantaClaraVisionZero@kimley-horn.com](mailto:SantaClaraVisionZero@kimley-horn.com)
3. Call and leave a voice message  
**408-915-6566**
4. Attend future community meetings
5. Share this project within your communities!
6. See bicycle and pedestrian safety tips on project website!

Scan Me to  
Learn More!







# Thank You!

[SantaClaraVisionZero@kimley-horn.com](mailto:SantaClaraVisionZero@kimley-horn.com)

**(408) 915-6566** – voicemail only

[SantaClaraCA.gov/VisionZero](http://SantaClaraCA.gov/VisionZero)



**City of  
Santa Clara**  
The Center of What's Possible



**Santa Clara's**  
**VISION**  
**for ZERO**  
**fatalities**  
**on the road.**