



City of Santa Clara

Meeting Agenda

Parks & Recreation Commission

Tuesday, November 15, 2022

7:00 PM

Virtual Meeting

Pursuant to California Government Code Section 54953(e) and City of Santa Clara Resolution 22-9150, the Parks & Recreation Commission meeting will be held by teleconference only. No physical location will be available for this meeting; however, the City of Santa Clara continues to have methods for the public to participate remotely:

Via Zoom:

<https://santaclaraca.zoom.us/j/91316665755>

Meeting ID: 913 1666 5755 or

Phone: (669) 900-6833

CALL TO ORDER AND ROLL CALL

CONSENT CALENDAR

- 1.A 22-1327** [Action on the Parks & Recreation Commission Minutes of the October 18, 2022 Meeting](#)

Recommendation: Approve the Parks & Recreation Commission Minutes of the October 18, 2022 Meeting.

- 1.B 22-1343** [Consider a Request from the Santa Clara Youth Soccer League for a Financial Grant in the Amount of \\$6,693 from the Wade Brummal Youth Sports Grant Program](#)

Recommendation: Approve the SCYSL request for a Wade Brummal Youth Sports Grant in the amount of \$6,693.

PUBLIC PRESENTATIONS

[This item is reserved for persons to address the body on any matter not on the agenda that is within the subject matter jurisdiction of the body. The law does not permit action on, or extended discussion of, any item not on the agenda except under special circumstances. The governing body, or staff, may briefly respond to statements made or questions posed, and appropriate body may request staff to report back at a subsequent meeting.]

GENERAL BUSINESS

2. **22-1326** [Consideration of the Schematic Design - Master Plan for the New Public Neighborhood East Park at 5155 Stars & Stripes Drive \(Related Urban\)](#)

Recommendation: Recommend that Council approve the proposed Schematic Design - Master Plan for the East Neighborhood Park to be located at 5155 Stars & Stripes Blvd.

3. **22-1356** [Initiate Community Input Process for the proposed Schematic Design for a New Public Mini Park at 3000 Patrick Henry Drive \(SummerHill - Patrick Henry Drive Specific Plan\)](#)

Recommendation: Provide input on a proposed Schematic Design for a New Mini Park to be located at 3000 Patrick Henry Drive.

4. **22-1328** [Parks & Recreation Commission Work Plan Goals for FY2022/23](#)

Recommendation: Report on activities and efforts in support of the Commission's Work Plan Goals for FY 2022/23.

STAFF REPORT

COMMISSIONERS REPORT

ADJOURNMENT

The next scheduled meeting is on Tuesday, January 17, 2023, at 7:00 PM.

MEETING DISCLOSURES

The time limit within which to commence any lawsuit or legal challenge to any quasi-adjudicative decision made by the City is governed by Section 1094.6 of the Code of Civil Procedure, unless a shorter limitation period is specified by any other provision. Under Section 1094.6, any lawsuit or legal challenge to any quasi-adjudicative decision made by the City must be filed no later than the 90th day following the date on which such decision becomes final. Any lawsuit or legal challenge, which is not filed within that 90-day period, will be barred. If a person wishes to challenge the nature of the above section in court, they may be limited to raising only those issues they or someone else raised at the meeting described in this notice, or in written correspondence delivered to the City of Santa Clara, at or prior to the meeting. In addition, judicial challenge may be limited or barred where the interested party has not sought and exhausted all available administrative remedies.

If a member of the public submits a speaker card for any agenda items, their name will appear in the Minutes. If no speaker card is submitted, the Minutes will reflect "Public Speaker."

In accordance with the requirements of Title II of the Americans with Disabilities Act of 1990 ("ADA"), the City of Santa Clara will not discriminate against qualified individuals with disabilities on the basis of disability in its services, programs, or activities, and will ensure that all existing facilities will be made accessible to the maximum extent feasible. The City of Santa Clara will generally, upon request, provide appropriate aids and services leading to effective communication for qualified persons with disabilities including those with speech, hearing, or vision impairments so they can participate equally in the City's programs, services, and activities. The City of Santa Clara will make all reasonable modifications to policies and programs to ensure that people with disabilities have an equal opportunity to enjoy all of its programs, services, and activities.

Agendas and other written materials distributed during a public meeting that are public record will be made available by the City in an appropriate alternative format. Contact the City Clerk's Office at 1 408-615-2220 with your request for an alternative format copy of the agenda or other written materials.

Individuals who require an auxiliary aid or service for effective communication, or any other disability-related modification of policies or procedures, or other accommodation, in order to participate in a program, service, or activity of the City of Santa Clara, should contact the City's ADA Coordinator at 408-615-3000 as soon as possible but no later than 48 hours before the scheduled event.



City of Santa Clara

1500 Warburton Avenue
Santa Clara, CA 95050
santaclaraca.gov
@SantaClaraCity

Agenda Report

22-1327

Agenda Date: 11/15/2022

REPORT TO PARKS & RECREATION COMMISSION

SUBJECT

Action on the Parks & Recreation Commission Minutes of the October 18, 2022 Meeting

RECOMMENDATION

Approve the Parks & Recreation Commission Minutes of the October 18, 2022 Meeting.

Prepared by: Dale Seale, Deputy Director of Parks & Recreation

Approved by: James Teixeira, Director of Parks & Recreation

ATTACHMENTS

1. Draft - Parks & Recreation Commission Minutes of the October 18, 2022 Meeting



City of Santa Clara

Meeting Minutes

Parks & Recreation Commission

10/18/2022

7:00 PM

Virtual Meeting

Pursuant to California Government Code Section 54953(e) and City of Santa Clara Resolution 22-9142, the Parks & Recreation Commission meeting will be held by teleconference only. No physical location will be available for this meeting; however, the City of Santa Clara continues to have methods for the public to participate remotely:

Via Zoom:

<https://santaclaraca.zoom.us/j/91316665755>

Meeting ID: 913 1666 5755 or

Phone: (669) 900-6833

CALL TO ORDER AND ROLL CALL

Chair Gonzalez called the meeting to order at 7:02 PM.

Present 6 - Vice Chair Dana Caldwell, Commissioner Burt Field , Commissioner Eversley Forte, Chair Kelly Gonzalez, Commissioner Sajid Hai, and Commissioner Brittany Ricketts

Excused 1 - Commissioner Maureen Chu

Commissioner Hai made a motion, seconded by Commissioner Caldwell to excuse Commission Chu.

Aye: 6 - Vice Chair Caldwell, Commissioner Field , Commissioner Forte, Chair Gonzalez, Commissioner Hai, and Commissioner Ricketts

Excused: 1 - Commissioner Chu

CONSENT CALENDAR

Commissioner Forte made a motion, seconded by Commissioner Caldwell to approve the Consent Calendar.

Aye: 6 - Vice Chair Caldwell, Commissioner Field , Commissioner Forte, Chair Gonzalez, Commissioner Hai, and Commissioner Ricketts

Excused: 1 - Commissioner Chu

- 1.A [22-1233](#) Action on the Parks & Recreation Commission Minutes of the September 20, 2022 Meeting

Recommendation: Approve the Parks & Recreation Commission Minutes of the September 20, 2022 Meeting.

PUBLIC PRESENTATIONS

A resident wrote an email to the Commission in favor of an off-leash dog area at Earl R. Carmichael Park in the future.

Commissioner Chu joined the meeting at 7:10 PM.

- GENERAL BUSINESS** Recommend Nominee(s) for Consideration as the “Honorary Holiday Tree Lighter 2022” for the Annual Holiday Tree Lighting Ceremony on Friday, December 2, 2022
2. [22-1098](#)

Recommendation: Staff has no recommendation.

Commissioner Chu made a motion, seconded by Commissioner Field, to recommend the late former Fire Chief William "Bill" Kelly as the Honorary Holiday Tree Lighter for the 2022 Tree Lighting Ceremony.

Aye: 7 - Vice Chair Caldwell, Commissioner Chu, Commissioner Field , Commissioner Forte, Chair Gonzalez, Commissioner Hai, and Commissioner Ricketts

3. [22-1234](#) Develop Initial Draft of the Commission Work Plan Goals and Activities for FY 2022/23

Recommendation: Adopt a Parks & Recreation Commission Work Plan for FY 2022/23 that includes goals, supporting activities and subcommittee assignments.

Work Plan Goals:

A: 1) Review park site and facility condition assessments and recommend priorities given existing and anticipated service levels and available resources;

Subcommittee: Vice Chair Caldwell, Commissioner Field, and Chair Gonzalez.

Status as of 10/18/2022: The subcommittee met and plans to visit parks listed from the previous top ten prioritized project in 2021 with particular focus on the top three (3) to five (5) and those that may be included in an updated top ten list using the Facilities Condition Assessment (Kitchell 2017) as a reference.

B: 1) Review and solicit community input on the existing City park rehabilitation projects based on the current Capital Improvement Program (CIP) Budget and schedule; and 2) Review residential developer proposed schematic designs for new neighborhood parks that serve new residential development;

Subcommittee: Commissioner Chu and Commissioner Hai.

Status as of 10/18/2022: The subcommittee is considering various action items and methods to reach out and quantify community input for B1.

C: 1) Host and develop recommendations for the annual Santa Clara Art & Wine Festival 2023; and 2) participate in Citywide Special events

Status as of 10/18/2022: Commissioners shared their feedback with the Commission and staff regarding their experiences from the 40th annual Art & Wine Festival as they look forward to the planning for next year.

D: 1) Partner with at least one other City commission to build on/expand at least one existing Parks & Recreation Commission event by adding one extra element for patrons to interact with during the event.

Subcommittee: Commissioner Forte and Commissioner Ricketts.

Status as of 10/18/2022: Subcommittee will continue work on developing specific action items such as adding a multicultural market place for the 4th of July event.

Commissioner Chu made a motion, seconded by Commissioner Field, to recommend approval of Work Plan Goals A, B, and C and

the new Work Plan Goal D: Partner with at least one other City commission to build on/expand at least one existing Parks & Recreation Commission event by adding one extra element for patrons to interact with during the event; and, with the option to add another Work Plan Goal at a later date regarding the International Swim Center.

Aye: 7 - Vice Chair Caldwell, Commissioner Chu, Commissioner Field , Commissioner Forte, Chair Gonzalez, Commissioner Hai, and Commissioner Ricketts

STAFF REPORT

Deputy Director Seale encouraged the Commission to visit the Parks Project Page on the City's website to keep apprised of the current status of various projects. Related Santa Clara will soon be providing a presentation to the Commission at an upcoming meeting as a culmination of the community input and public outreach for the East Neighborhood Park.

Recreation Manager Castro expressed appreciation for the Commission's feedback for the Art & Wine Festival. The Holiday Tree Lighting event will be on December 2. The Magical Bridge All-Inclusive Playground check presentation will be held in Central Park at the future site of the playground. The Commission's group photo for the 2023 City Calendar will be taken following the check presentation. Shrek will be opening in a couple weeks. After school programming is continuing at a good pace at the Youth & Teen Center. Over the past few months, the Department introduced a new membership at the Senior Center and a Youth Resident Pass.

COMMISSIONERS REPORT

Chair Gonzalez stated that she met one of the fellow referees for soccer, who described how well maintained and beautiful the Santa Clara Youth Soccer Park is and how it is considered the best field in youth soccer at this time.

Commissioner Chu expressed that the Art & Wine Festival was fantastic. She has been volunteering for the Nutcracker backstage supervision and costume help, and going to Henry Schmidt Park regularly for the practices. In addition, she is renting the Lick Mill Park building for Girl Scout Troop meetings during the winter. She is very thankful for having so many recreation programs and facilities available for kids to experience important traditions year after year.

Commissioner Field reported that getting to meet the commissioners in person at the Art & Wine Festival, and working together, was incredible. Since late September, he had been seeing fires at night made from tree branches brought into Maywood Park from the adjacent creek; Santa Clara Police Department followed up and fire activity has decreased. Using examples such as trash pick-up at Maywood Park, he noted that a small group of active park patrons can make a significant difference in helping with the upkeep of parks.

Commissioner Forte worked out at Bowers Park.

Commissioner Hai visited Jenny Stand Park and Central Park.

Commissioner Ricketts reported on the Art & Wine Festival and how being out and about with friends and neighbors in the community has been amazing. She is pleased that the Henry Schmidt Park Playground Rehabilitation Project is on our list of upcoming projects. She and Commissioner Forte have already begun to work on action items for their subcommittee for Work Plan Goal D which involves working with other commissions.

Vice Chair Caldwell reported on the Art & Wine Festival and had a great time at the event. Volunteers who worked the booth were outstanding. Even though weather dampened things on the Sunday, it was a lot of fun. He was pleased to report on having the broken tree branch at Maywood Park removed in a timely manner by Parks & Recreation staff, which made neighbors exceptionally happy.

ADJOURNMENT

Commissioner Chu made a motion, seconded by Commissioner Caldwell to adjourn the meeting until the next Regular Meeting at 7:00 PM on Tuesday November 15, 2022.

Aye: 7 - Vice Chair Caldwell, Commissioner Chu, Commissioner Field , Commissioner Forte, Chair Gonzalez, Commissioner Hai, and Commissioner Ricketts

MEETING DISCLOSURES

The time limit within which to commence any lawsuit or legal challenge to any quasi-adjudicative decision made by the City is governed by Section 1094.6 of the Code of Civil Procedure, unless a shorter limitation period is specified by any other provision. Under Section 1094.6, any lawsuit or legal challenge to any quasi-adjudicative decision made by the City must be filed no later than the 90th day following the date on which such decision becomes final. Any lawsuit or legal challenge, which is not filed within that 90-day period, will be barred. If a person wishes to challenge the nature of the above section in court, they may be limited to raising only those issues they or someone else raised at the meeting described in this notice, or in written correspondence delivered to the City of Santa Clara, at or prior to the meeting. In addition, judicial challenge may be limited or barred where the interested party has not sought and exhausted all available administrative remedies.

If a member of the public submits a speaker card for any agenda items, their name will appear in the Minutes. If no speaker card is submitted, the Minutes will reflect "Public Speaker."

In accordance with the requirements of Title II of the Americans with Disabilities Act of 1990 ("ADA"), the City of Santa Clara will not discriminate against qualified individuals with disabilities on the basis of disability in its services, programs, or activities, and will ensure that all existing facilities will be made accessible to the maximum extent feasible. The City of Santa Clara will generally, upon request, provide appropriate aids and services leading to effective communication for qualified persons with disabilities including those with speech, hearing, or vision impairments so they can participate equally in the City's programs, services, and activities. The City of Santa Clara will make all reasonable modifications to policies and programs to ensure that people with disabilities have an equal opportunity to enjoy all of its programs, services, and activities.

Agendas and other written materials distributed during a public meeting that are public record will be made available by the City in an appropriate alternative format. Contact the City Clerk's Office at 1 408-615-2220 with your request for an alternative format copy of the agenda or other written materials.

Individuals who require an auxiliary aid or service for effective communication, or any other disability-related modification of policies or procedures, or other accommodation, in order to participate in a program, service, or activity of the City of Santa Clara, should contact the City's ADA Coordinator at 408-615-3000 as soon as possible but no later than 48 hours before the scheduled event.



Agenda Report

22-1343

Agenda Date: 11/15/2022

REPORT TO PARKS AND RECREATION COMMISSION

SUBJECT

Consider a Request from the Santa Clara Youth Soccer League for a Financial Grant in the Amount of \$6,693 from the Wade Brummal Youth Sports Grant Program

COUNCIL PILLAR

Enhance Community Sports, Recreation & Arts Assets
Enhance Community Engagement and Transparency

BACKGROUND

The Wade Brummal Youth Sports Grant Program (Program) was established in memory of Santa Clara resident and youth sports enthusiast Wade Brummal. On October 27, 2015, Council approved a fee in the amount of \$25 per non-resident youth participant in Santa Clara youth sports organizations as a means of generating funds to support economically challenged Santa Clara youth participate in local Santa Clara based youth sports programs. The Grants would reimburse the organization for registration, equipment, program fees, and other related costs. Prior to adopting the fee, the Program had been funded through individual donations and an annual golf tournament held at the now closed Santa Clara Golf & Tennis Club.

Local youth sports organizations using City Parks & Recreation facilities and fields provide seasonal rosters identifying non-resident players and payment of the non-resident participant fee. In order to be eligible to submit a request for a financial grant, organizations must meet the established eligibility criteria, including:

- (1) the organization must be a City of Santa Clara non-profit, sports, or school organization serving youth 18 years and under;
- (2) funds must be used for covering registration and/or participation fees, enhancing service, training, equipment, facilities or other expenses related to the sport, league, or activity;
- (3) requests are limited to one request per organization, per sport; and,
- (4) a limit of \$500 per group, per request would be granted.

Grant Program requests above \$500 are reviewed by the Parks & Recreation Commission. Payments are administered by the Parks & Recreation Department.

From 2015 to 2019, the Grant Program provided six (6) organizations with financial grants for youth from low-income households to participate in sports programs. In 2020, seven youth sports organizations participated. As of October 2022, the Grant Program account balance was \$292,962.

DISCUSSION

In July 2022, Santa Clara Youth Soccer League (SCYSL) requested a financial grant in the amount of \$6,693 (Attachment 1). The grant, if approved would reimburse SCYSL for 26 player registrations that were provided free during the 2021/22 soccer season.

SCYSL is a nonprofit organization whose primary purpose is to develop, promote and administer the game of soccer and to provide a healthy recreational activity while teaching sportsmanship and discipline to youth under six years old to under the age of nineteen within the SCYSL territorial boundaries. The SCYSL program supports approximately 2,100 children per year in the City of Santa Clara.

SCYSL has contributed to the Wade Brummal Youth Sports Grant Program and met the fee requirements for the 2022 calendar year. The Parks & Recreation Department staff reviewed the request and determined that it meets the grant guidelines for consideration. The Parks & Recreation Commission will review the request at the November 15, 2022 Regular Meeting since it is over \$500.

ENVIRONMENTAL REVIEW

The action being considered does not constitute a “project” within the meaning of the California Environmental Quality Act (“CEQA”) pursuant to CEQA Guidelines section 153778(a) as it has no potential for resulting in either a direct physical change in the environment or a reasonably foreseeable indirect physical change in the environment.

FISCAL IMPACT

There will be no impact on the City’s General Fund. The Wade Brummal Youth Sports Grant Program account balance is \$292,962 which can accommodate the request of funds in the total amount of \$6,693.

PUBLIC CONTACT

Public contact was made by posting the Parks & Recreation Commission agenda on the City’s official -notice bulletin board outside City Hall Council Chambers. A complete agenda packet is available on the City’s website and in the City Clerk’s Office at least 72 hours prior to a Regular Meeting and 24 hours prior to a Special Meeting. A hard copy of any agenda report may be requested by contacting the City Clerk’s Office at (408) 615-2220, email clerk@santaclaraca.gov <<mailto:clerk@santaclaraca.gov>>.

RECOMMENDATION

Approve the SCYSL request for a Wade Brummal Youth Sports Grant in the amount of \$6,693.

Prepared by: Kimberly Castro, Recreation Manager

Approved by: James Teixeira, Director of Parks & Recreation

ATTACHMENTS

1. Wade Brummal Youth Sports Grant Program Application - SCYSL 2022



Santa Clara Youth Soccer League
P.O. Box 2014
Santa Clara, CA 95055-2014
www.scysl.org

July 18, 2022

City of Santa Clara - Parks and Recreation Dept
Attn: Angelique Wilson

Re: Wade Brummel Scholarship/Grant Program

Dear Angelique,

Per instructions, we are providing this letter as a formal request for reimbursement under the guidelines for the Wade Brummel Scholarship/Grant program. The accompanying listing of individuals and amounts represent waivers of registration fees for Santa Clara residents who expressed a financial need. We were proud to be in a position to assist our community members in their time of need, and your support through the Wade Brummel Scholarship/Grant program extends this support in a meaningful way.

Our accompanying support is for a request in the amount of \$6,693.00

We appreciate your continued support, and if there is anything else you require in support of this request, please let either Jamie Alas, SCYSL Treasurer, or myself know at your earliest convenience.

Kind regards,

Steve Robertson
Santa Clara Youth Soccer League
sgrobbo_10@hotmail.com
408-823-5658

Wade Brummal Scholarship/Grant Program Application

(Please type or print)

1. Amount requested \$ 6693
2. How are funds to be specifically used? Help Families with registration fees
3. Summary of proposed activity, project, program, etc., to be funded.
SCYSL (Santa Clara Lions and Santa Clara Sporting)
4. Who is specifically served by these funds?
Individual families who are low income
5. Name/Organization SCYSL

Contact Person Steve Robertson

Phone (home) 408-823-5658

Phone (work) _____

Address PO Box 2014

City, State, Zip Santa Clara, CA 95055-2014

Applicant's signature* *Jamie Alas*

Applicant's title Treasurer

Date 7/12/22

*Parent/guardian signature required if applicant is under 18 years old

Mail completed application to:
Wade Brummal Scholarship/Grant Program
Parks & Recreation Dept—City Hall
1500 Warburton Avenue
Santa Clara, CA 95050
Call (408) 615-3140 for additional information.



Agenda Report

22-1326

Agenda Date: 11/15/2022

REPORT TO PARKS & RECREATION COMMISSION

SUBJECT

Consideration of the Schematic Design - Master Plan for the New Public Neighborhood East Park at 5155 Stars & Stripes Drive (Related Urban)

COUNCIL PILLAR

Enhance Community Sports, Recreational and Arts Assets
Deliver and Enhance High Quality Efficient Services and Infrastructure

BACKGROUND

On June 28, 2016, the City Council approved the construction of a new multi-phased, mixed-use development on a 240-acre project site north of Tasman Drive (formerly the site of the City's Santa Clara Golf & Tennis Club). Related Santa Clara (Developer) will create a LEED-certified, multi-phased, mixed-use destination located at 5155 Stars & Stripes Drive across from Levi's Stadium. This urban center will incorporate residential units, restaurants, entertainment venues, hotels, retail, and office space to establish a new neighborhood in a pedestrian oriented "live, work, play" environment. The development includes 1,680 residential units, a 30-acre community park, and three neighborhood parks located generally on the east, west, and north sides of the project.

On September 20, 2022 the Parks & Recreation Commission received a presentation (Attachment 1) of the proposed schematic design and amenities for the East Neighborhood Park (consistent with the overall City Place project's Architectural Review approval), received public comment and provided Commission input (RTC #22-1079). The East Neighborhood Park will be located to the west of Lafayette, just north of the VTA station and to the South of the proposed 30-acre Community Park North site.

DISCUSSION

On November 15, 2022, the Parks & Recreation Commission will receive a presentation (Attachment 2) by Related Urban for the East Neighborhood Park Schematic Design - Master Plan at 5155 Stars & Stripes Drive.

Community Outreach

Community input included a Community Survey that was posted on the City website from September 16 through October 9, and in-person community input at the Art & Wine Festival September 17 and 18, 2022 at Central Park.

The City invited the public to participate in the Community Survey through the City's GovDelivery system, and announcing it at the September 20, 2022 Parks & Recreation Commission meeting. In addition, Related Santa Clara employed a variety of efforts to drive traffic to the online survey, including public contact at the Santa Clara Art & Wine Festival, sending direct mail to approximately

1,000 city residents, leveraging ACE, Capital Corridor, and VTA's social media channels, partnering with the Silicon Valley Chamber of Commerce to disseminate information to its membership, and leafletting at local parking garages.

Public Input

In total, over 514 responses were tallied. The online survey received 214 responses, equal to about 11 hours of public comment on specific aspects of the park design and amenities. The Art & Wine Festival in person contacts numbered over 300 Santa Clarans and represented a wide/diverse demographic. Residents indicated their preferences on story boards by placing a color sticker next to their preferred neighborhood park uses. Based on the input, residents were positive about the park's proposed design elements including park accessibility, bike path connectivity, inclusive elements of play, activities for people of all ages, as well as the park location. Young children were notably favorable about the playground and dog park. Teens voiced support for open spaces for informal group sports activities and exercise. Older teens expressed a desire to see a rope climbing structure to challenge older teens.

The proposed design has incorporated design changes to respond to the top areas of feedback. (a) Sport courts were a highly rated park element with inclusion of a pickleball court the most requested; the proposed design replaces one sand volleyball court with two pickleball courts. (b) Ecologically friendly, drought tolerant planting and a pollinator garden were frequently requested; the proposed design includes both. (c) Ample seating and shade were high public priorities; the design has added a seating area and increased the number of shade trees.

The Commission will review the Schematic Design - Master Plan, receive public comment, and make a possible recommendation to City Council for approval.

ENVIRONMENTAL REVIEW

The action being considered does not constitute a "project" within the meaning of the California Environmental Quality Act ("CEQA") pursuant to CEQA Guidelines section 15378(b)(5) in that it is a governmental organizational or administrative activity that will not result in direct or indirect changes in the environment. The activity covered by this residential development project falls within the scope of the project analyzed under the Environmental Impact Report (EIR), which included the construction of parks, and which was approved on June 28, 2016 (Resolution No. 16-8337) pursuant to the California Environmental Quality Act (CEQA) (Public Resources Code Section 21000 et seq.).

FISCAL IMPACT

There is no fiscal impact to the General Fund for the design and construction of the Neighborhood Park. The developer will design and construct the Neighborhood Park to City standards. Park Maintenance costs and responsibility will be established in the first DAP application for Phase 2 and ongoing funding obligation reflected in the Master Declaration of Covenants, Conditions and Restrictions (CC&Rs).

COORDINATION

This report has been coordinated with the City Attorney's Office.

PUBLIC CONTACT

Public contact was made by posting the Parks & Recreation Commission agenda on the City's official -notice bulletin board outside City Hall Council Chambers. A complete agenda packet is available on

the City's website and in the City Clerk's Office at least 72 hours prior to a Regular Meeting and 24 hours prior to a Special Meeting. A hard copy of any agenda report may be requested by contacting the City Clerk's Office at (408) 615-2220, email clerk@santaclaraca.gov <<mailto:clerk@santaclaraca.gov>> <<<mailto:clerk@santaclaraca.gov>>>.

RECOMMENDATION

Recommend that Council approve the proposed Schematic Design - Master Plan for the East Neighborhood Park to be located at 5155 Stars & Stripes Blvd.

Prepared by: Gina Saporito, Staff Analyst

Approved by: James Teixeira, Director of Parks & Recreation

ATTACHMENTS

1. Schematic Design - Master Plan Presentation

**Consideration of the Preferred Schematic Design
& Master Plan for the New Public East
Neighborhood Park to be located at 5155 Stars &
Stripes Drive (Related Urban)**

**City of Santa Clara
Parks & Recreation Commission
November 15, 2022
#22-1326**



EAST NEIGHBORHOOD PARK

Public Neighborhood Parks Proposal

11.15.2022

Related Santa Clara



North Neighborhood Park (future extension)

4.27 acres

Related Santa Clara

The East Neighborhood Park will be conveniently located a short distance north of the Amtrak Great America station which will serve the new community of Related Santa Clara. Convenient access via transit and a regional bike network will draw people from the surrounding neighborhoods.

The East Neighborhood Park and North Neighborhood Park (future extension) will be focused on health and wellness. The East Neighborhood Park will provide ample active recreation opportunities for all ages. A children's playground with separate areas for kids ages 2-5 and 6-12 will be the central element complete with picnic and supervisory accommodations. Sand volleyball courts and an open play field will provide opportunity for both organized and informal physical activity. A dog park divided for small and large breeds and dispersed picnic areas will provide additional leisure activities for park goers.

A regionally adapted plant palette with special consideration to successional plant species will dress the park with a resilient and performative landscape.

East Neighborhood Park

4.31 acres

Transit Connection

Great America Pkwy

Lafayette St

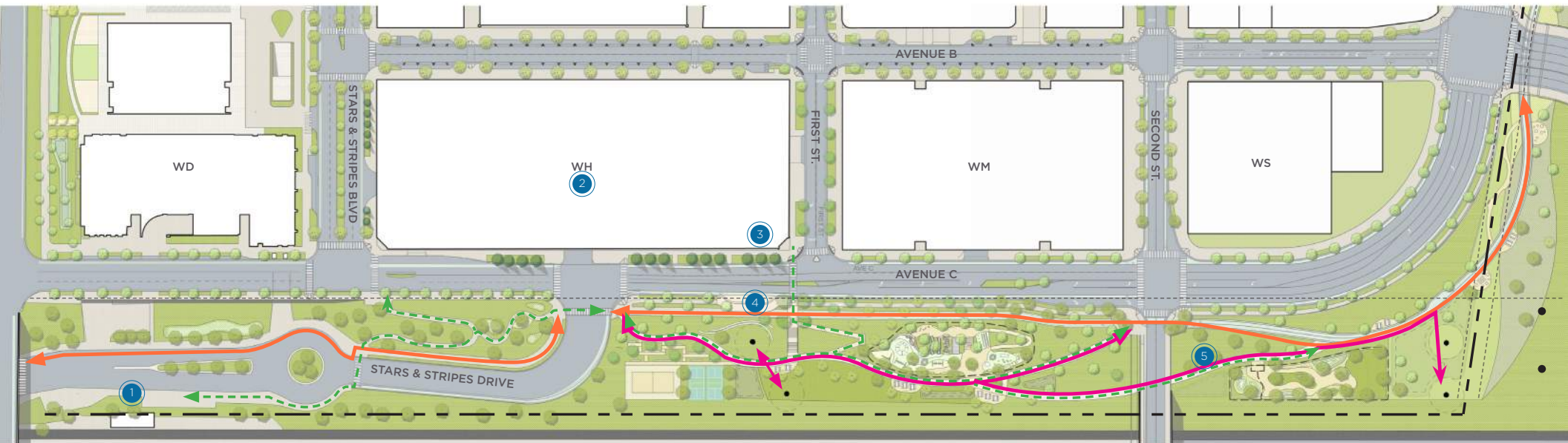
Tasman Dr

Changes Resulting from Community Engagement



- ① addition of pollinator garden
- ② replace one sand volleyball court with two pickle ball courts
- ③ additional seating area with shade trees

East Neighborhood Park | Access



- ① Transit Access
- ② Park Visitor Parking
- ③ Public Restroom
- ④ Passenger Drop-off
- ⑤ Trash Collection

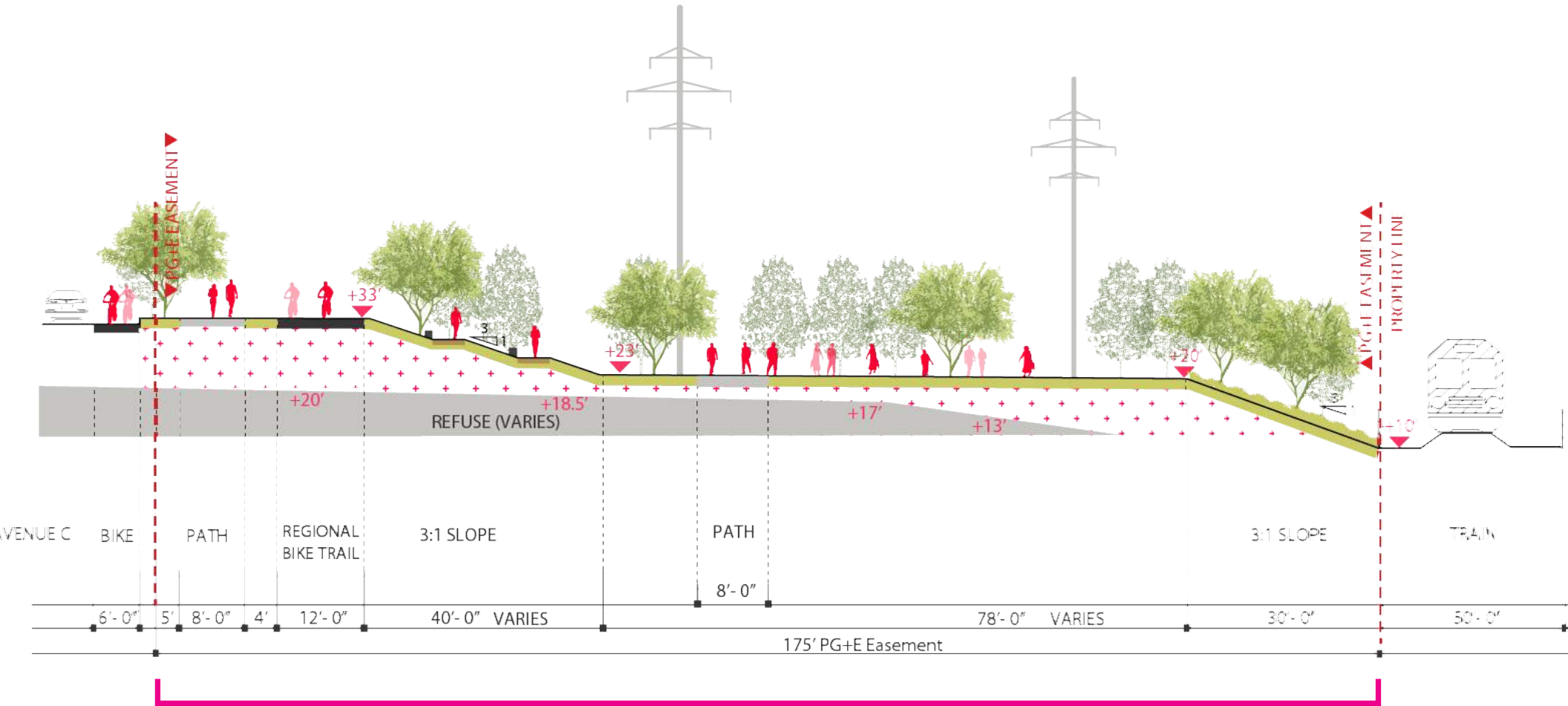
- ↔ Utility and Trash Access
- ↔ Regional Bike Trail
- ↔ ADA Access

- Easements
- Property Line
- Overhead Utility Pole

Key Result from Public Outreach: Concern for public parking access
 Solution: Label public parking for park visitors

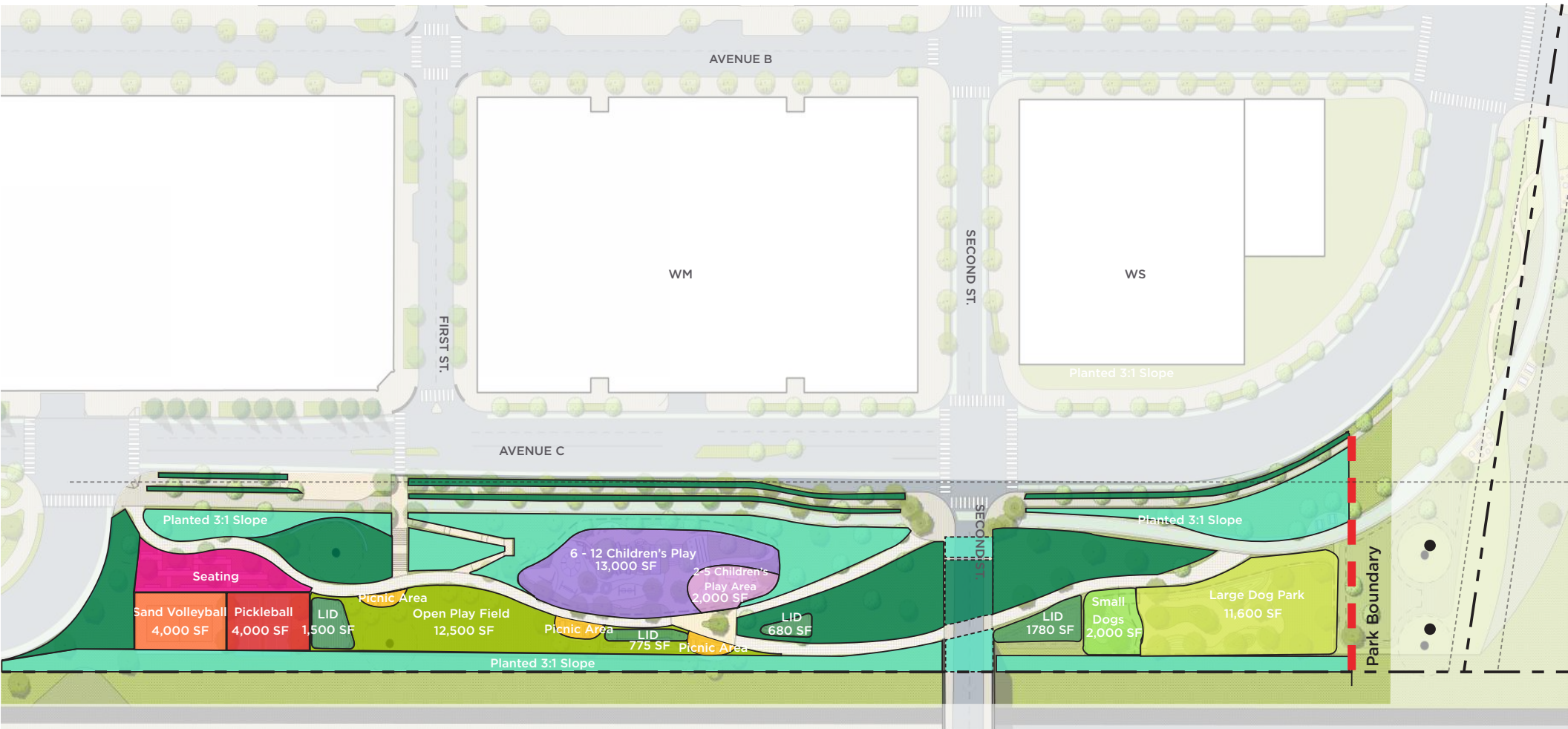


East Neighborhood Park | Earthen Slope Typical Section



East Neighborhood Park Width 177'

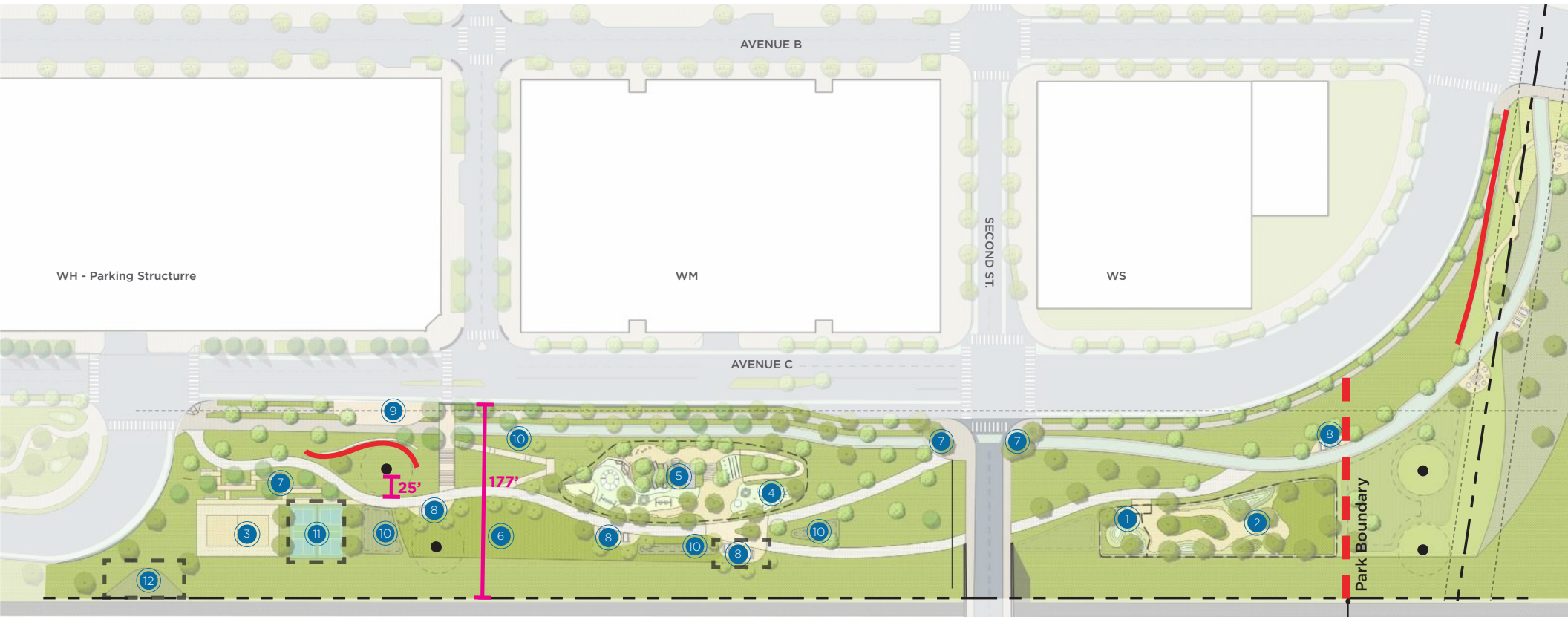
East Neighborhood Park | Area Takeoffs



- Easements
- Property Line
- Park Boundary
- LID 0.11 Acres
- Planted 3:1 Slope 1.04 Acres



East Neighborhood Park | Programming



- ① Small Dog Park
- ② Large Dog Park
- ③ Sand Volleyball
- ④ Ages 2-5 Play Area
- ⑤ Ages 6-12 Play Area
- ⑥ Open Play Field
- ⑦ Sitting Area
- ⑧ Picnic Area
- ⑨ Park Layby
- ⑩ LID 4,735 SF
- ⑪ Pickle Ball
- ⑫ Pollinator Garden

- Retaining Wall
- - - - - Easements
- Property Line





















Key Result from Public Outreach: Sport courts highly requested; Pickle Ball most requested
Solution: One sand volley ball court replaced with two pickle ball courts

Key Result from Public Outreach: Ecologically friendly, drought tolerant planting and inclusion of a pollinator garden
Solution: Include a pollinator garden area safely away from high traffic areas

Key Result from Public Outreach: Ample seating and shade are a high priority
Solution: Addition of one more seating area and increase number of trees at all seating

East Neighborhood Park | Playground Enlargement



- | | | | | | | |
|--|---|--|---|--|---|--|
|  Swinging |  Spinning |  1 Rock Climbing Wall |  4 Cocowave Pendulum Swing |  7 Play Berm with Tunnel |  10 Nature Play Climbing |  13 Wheelchair Carousel |
|  Sliding |  Climbing |  2 Galaxy Rigel |  5 Spica 1 |  8 Expression Swing |  11 Wide Hill Slide 1.8 |  14 Small Arc Ladder |
|  Brachiating |  Balancing |  3 Super Frisbee |  6 Spinner Bowl |  9 Goric Hill Slide |  12 Play Bubbles |  15 Hill Climber rope with EPDM |
|  Free Running | | | | | |  16 Free Running Space |



East Neighborhood Park | Playground Matrix

Park Playground

Elements of Play	Ages 2-5	Level of Play	* Proposed Capacity	Ages 6-12	Level of Play	* Proposed Capacity	Total Capacity
Balancing	4	B= 1 I= 2 A= 1	10	4	B= 1 I= 2 A= 1	15	25
Sliding	3	B= 1 I= 1 A= 1	7	3	B= 1 I= 1 A= 1	7	14
Brachiating	3	B= 1 I= 1 A= 1	8	3	B= 1 I= 1 A= 1	10	18
Spinning	6	B= 2 I= 2 A= 2	6	5	B= 1 I= 3 A= 1	8	14
Climbing	6	B= 1 I= 3 A= 2	10	5	B= 1 I= 3 A= 1	25	35
Swinging	4	B= 1 I= 2 A= 1	8	4	B= 1 I= 2 A= 1	12	20
Running/Free Play	3	N/A	15	3	N/A	15	30
Total:	29		64	14		92	156
Inclusive Play Elements	29	B 7 I 11 A 8	10	14	B 6 I 6 A 2	20	30

Level of Play:

B: Beginner I: Intermediate A: Advanced

East Neighborhood Park | Playground Equipment



1 Rock Climbing Wall

For ages 6-12, a rock climbing wall activates climbing, stretching and navigating skills. There are different climbing paths that vary in difficulty which encourage strategical moving and thinking.



2 Galaxy Rigel

Spin, climb, meet, and play - the Rigel offers a bit of each. The Musca Spinner generates challenging centrifugal forces as one or more children send it spinning. The Jacob's Ladder, the Climbing Pole with Climbing Steps provides alternative ways to climb up and perch on the open rubber surfacing-coated triangle frame. Down below the Play shell offers a place to sit, lay or climb on, to watch the



3 Super Frisbee

Variations in stretching, climbing, and navigating. The varied access points provide opportunities for children to strengthen their muscles through climbing, as they are rewarded by the thrill of navigating the height. There are points of graduated challenge, that inspire children to return to the structure to challenge themselves each time. At ground level, people of all abilities can participate in the fun and the challenge, which supports a positive attitude toward a healthy lifestyle for all.



4 Cocowave Pendulum

With its oblong coconut rope, the Cocowave Pendulum Swing allows for swinging from a seated, lying or standing position. The swing is for bigger groups, of different sizes, ages and physical abilities. It takes teamwork to make the swing move, and this stimulates important social-motional skills. It trains muscles and important motor skills, such as balance, coordination and sense of space that train vestibular skills for e.g. navigating traffic safely. The feeling of speed and height stimulates children's self-esteem, risk management and other important social-emotional life skills.



5 Spica 1

A lot of experimentation is needed to master the Spica and control its speed. First, a child steps onto the triangular plate and pushes off with their foot. Then they discover that as they use their arms to pull their body toward the support handle, they spin faster! As they move their center of gravity away from the handle, they slow down. The Spica is one of our most popular play events.



6 Spinner Bowl

The Spinner Bowl is a load of fun for all ages! Originally designed for the purpose of experimental sand play, children loved to climb inside for a spin of their own. The Spinner Bowl is a thrilling ride that also provides the benefits of physical development through vestibular stimulation and excellent balance training. The Spinner Bowl is a playground favorite that can be



7 Play Berm with Tunnel

Encourages climbing not only through the tunnel but on the soft turfed berm. Gaining the courage to go through the tunnel creates a sweet sensation of achievement. It teaches cooperation and turn taking skills that children train when entering.



8 Expression Swing

Expression Swing promotes intergenerational play as adults and children swing together. The patented face-to-face design features a bucket seat for children under five and a comfortable adult swing seat that allows a parent and child (or grandparent and grandchild) to interact with each other and experience one another's facial expressions while at play.



9 Goric Hill Slide 2.6

Accessible to all ages. The winding curves in the slide take children to the ground at high speed. Encourages interaction with friends when going down the very same hill that they are running or climbing up or down. Apart from being great fun, sliding also trains the child's focal tracking and sense of space.



10 Climbing Stairs

A climbing challenge with a naturalistic feel. Climbing the curved slopes supports the development of physical skills such as agility, balance, and coordination while bringing children closer to nature.

East Neighborhood Park | Playground Equipment



11 Wide Hill Slide 1.8

Accessible for all ages and multiple users. Perfect for sliding with the whole family.



12 Play Bubbles

Made of a colorful and soft material, Play Bubbles, are the ideal climbing tool for ages 3-5.



13 Wheelchair Carousel

Carousel with room for a wheelchair: Play for everyone, no matter their abilities. The huge, truly inclusive, universal design carousel attracts big groups of children and adults for a spin. The ground-level design makes the carousel accessible to everyone. The bench provides a comfortable seated spin. The handholds function from both sides. From the inside they offer good support, while from the outside they can be used to get the carousel moving. Spinning on this carousel trains the vestibular system, sense of balance and spatial awareness. The benefits also include training social skills, such as cooperation and empathy, by assisting friends of all abilities to spin and helping others wanting to join or exit. It is play with a purpose for all.



14 Small Arc Ladder

With its graceful arch, the Small Arc Ladder allows children to climb over and under. This rope net structure builds core strength and agility and improves overall upper body strength. The floating pedestals provide rest stops for tired arms, and also give quick access to the top of the arch.



15 Hill Climber Rope with

The fun of fundamentals make children play again and again: the Hill Climber invites and supports rappelling up steep hills. The wonderful combination of stemming the feet into the hill, holding tight to the rope and leaning back, walking upwards is a repeatedly thrilling Experience. Apart from being great fun, the combination of movement also provides great gross motor and muscle training. Hands, arms and upper body get trained when gripping the perfectly sized rope, legs get trained walking up and core muscles are put to work when leaning back, tensioning the core. The motor skill training is intense: the spatial awareness, the sense of balance and the coordination come to full use. This stimulates the overall motor confidence of the child and helps train the ability to e.g. judge distances – important in street traffic.

East Neighborhood Park | Tree Planting Plan



● *Platanus racemosa*
California Sycamore
48" box



● *Quercus coccinea*
Scarlett Red Oak
48" box



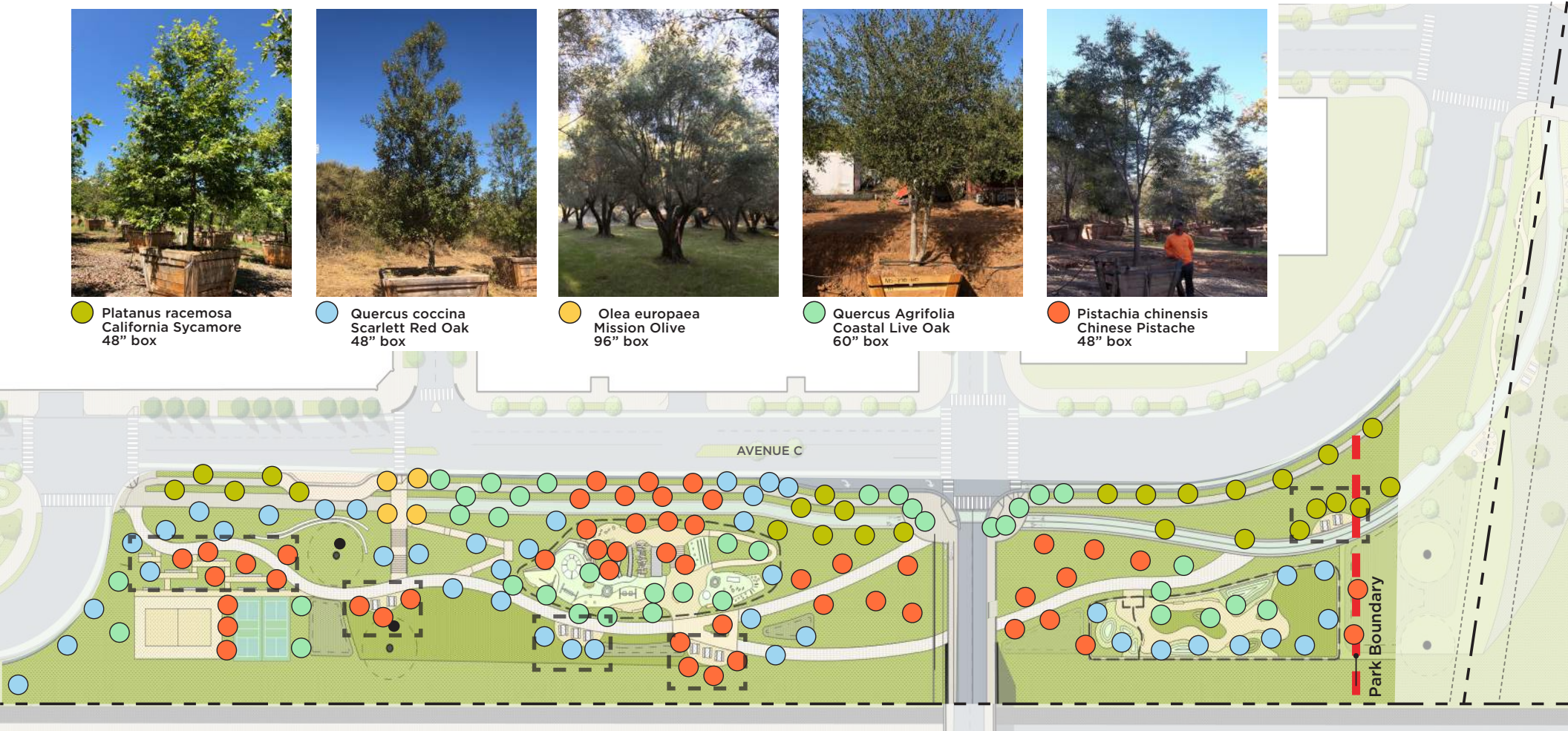
● *Olea europaea*
Mission Olive
96" box



● *Quercus Agrifolia*
Coastal Live Oak
60" box



● *Pistachia chinensis*
Chinese Pistache
48" box



- Easements
- Property Line
- Park Boundary

Key Result from Public Outreach: Ample seating and shade are a high priority
Solution: Addition of one more seating area and increase number of trees at all seating

East Neighborhood Park | Tree Species



Pistacia chinensis

Chinese Pistache

Height: 40' Spread: 40'
Water: Moderate, Minimal
Light: Full

A deciduous tree with vibrant and aromatic flowers and brilliant orange fall color. This specimen tree shows brilliantly year round and is a hardy tree that is wind and drought tolerant, and can tolerate part to full sun.



Pistacia chinensis multi-trunk

Chinese Pistache

Height: 40' Spread: 40'
Water: Moderate, Minimal
Light: Full

A deciduous tree with vibrant and aromatic flowers and brilliant orange fall color. This specimen tree shows brilliantly year round and is a hardy tree that is wind and drought tolerant, and can tolerate part to full sun.



Platanus racemosa

California Sycamore

Height: 40'-60' Spread: 40'-50'
Water: Minimal
Light: Full

A picturesque fast growing long lived California native deciduous tree that can grow to as tall as 100 feet but more typically is seen around 40 to 50 feet. The wide-spreading branches are often twisted or leaning with reddish-brown bark peeling off to expose the white wood underneath in a mottled pattern. Before fall the deeply lobed leaves turn brown sometimes staying on the tree until early spring.

East Neighborhood Park | Tree Species



PR

Platanus racemosa multi-stem

California Sycamore

Height: 40'-60' Spread: 40'-50'

Water: Minimal

Light: Full

A picturesque fast growing long lived California native deciduous tree that can grow to as tall as 100 feet but more typically is seen around 40 to 50 feet. The wide-spreading branches are often twisted or leaning with reddish-brown bark peeling off to expose the white wood underneath in a mottled pattern. Before fall the deeply lobed leaves turn brown sometimes staying on the tree until early spring.



QA

Quercus agrifolia

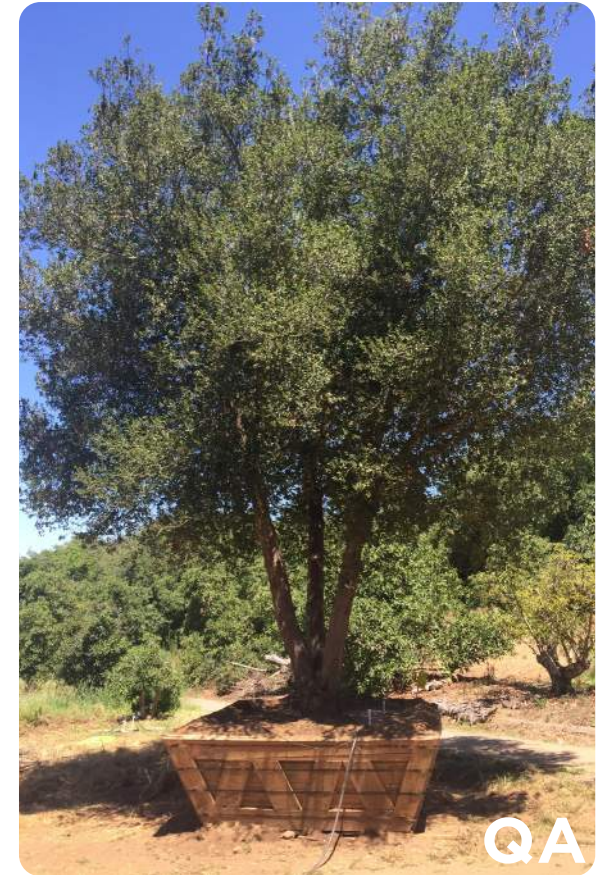
Coastal Live Oak

Height: 30'-60' Spread: 40'-70'

Water: Moderate

Light: Full

A large evergreen tree native to Southern California. Rounded head and dense foliage, Smooth dark gray bark with convex, stiff, leathery dark green leaves, tooth edged and holly-like. Large canopy makes this tree a good shade tree.



QA

Quercus agrifolia multi-stem

Coastal Live Oak

Height: 30'-60' Spread: 40'-70'

Water: Moderate

Light: Full

A large evergreen tree native to Southern California. Rounded head and dense foliage, Smooth dark gray bark with convex, stiff, leathery dark green leaves, tooth edged and holly-like. Large canopy makes this tree a good shade tree.

East Neighborhood Park | Tree Species



Quercus coccina

Scarlet Oak

Height: 40'-60' Spread: 30'-40'

Water: Moderate, Minimal

Light: Full

A medium sized, deciduous tree of the red oak group. Pyramidal in youth but spreads to a broad open crown with age. Typically grows at a moderately fast rate to a height of 40-60' (to 100' in the wild). Shiny, dark green leaves (6-8" long) with deep, spiny lobes (usually 7-9 lobes). Fall color appears late, but is often a respectable brownish red.



Olea europaea

Mission Olive

Height: 25'-35' Spread: 20'-30"

Water: Moderate, Minimal

Light: Full

A distinctive evergreen tree growing with an upright habit. The olive is one of the most widely recognized trees around the world and is one of the most symbolic and characteristic garden plants in Mediterranean regions around the world. It is tolerant of heat and summer drought and can tolerate heavy pruning.

East Neighborhood Park | Second Street Gateway Plaza



East Neighborhood Park | Drop-off Arrival



East Neighborhood Park | Regional Bike Trail



East Neighborhood Park | Kids Play



East Neighborhood Park | Kids Play



East Neighborhood Park | Kids Play



East Neighborhood Park | Kids Play



East Neighborhood Park | Kids Play



East Neighborhood Park | Dog Park



East Neighborhood Park | Large Dog Park



East Neighborhood Park | Small Dog Park



OJB LANDSCAPE
ARCHITECTURE



Agenda Report

22-1356

Agenda Date: 11/15/2022

REPORT TO PARKS & RECREATION COMMISSION

SUBJECT

Initiate Community Input Process for the proposed Schematic Design for a New Public Mini Park at 3000 Patrick Henry Drive (SummerHill - Patrick Henry Drive Specific Plan)

COUNCIL PILLARS

Enhance Community Sports, Recreational and Arts Assets
Enhance Community Engagement and Transparency

BACKGROUND

The Santa Clara City Code 17.35 requires new residential development to provide parkland and active recreational amenities (and/or fees in lieu) to serve the needs of residents in the immediate neighborhood of the development and to reduce potential impacts on the City park system. The review and approval process includes several steps. Residential developer applications are submitted to the City and Parks & Recreation Department staff review the application for conformance with the requirements of City Code, the park system facility, program and service needs, research based best practices, park design principles, standards and specifications, as well as compatibility with adjacent uses. Following an internal review, a proposed park program and initial schematic design are presented for community input from affected stakeholders, the general public and the Parks & Recreation Commission. The process involves public meetings, an on-line survey, and other opportunities for feedback. A revised/preferred park master plan and schematic design are presented to the Parks & Recreation Commission for recommendation to the Santa Clara City Council (Council) for review and approval.

On March 22, 2022, Council adopted the Patrick Henry Drive Specific Plan (Specific Plan) which provides guidelines for projects proposed within the 74-acre specific plan area bounded by Calabazas Creek to the west, the SFPUC Hetch Hetchy right of way to the north, Great America Parkway to the east, and Mission Community College to the south. The Specific Plan provides detailed guidance for future land uses. The vision is to transform existing office parks into a cohesive, high-density mixed-use community that fosters economic vitality near jobs, retail, services, and entertainment which enhances the quality of life for those who live, work, and recreate in the area.

SummerHill Apartment Communities (Developer) is proposing a 7-story, 305 residential unit mixed-use project with 4,000 square feet (sf) of retail space to be located at 3000 Patrick Henry Drive (Project). The Developer's Project proposes to meet its City parkland dedication requirement through a 9,250sf (0.21-acre) public Mini Park for the arts (Mini Park), a 4,900sf (0.011-acre) community art center, and payment of City Mitigation Fee Act (MFA) fees due in-lieu of parkland dedication in compliance with City Code 17.35. The proposed Mini Park and the community art center will be situated north of Mission College and across the street from a Neighborhood Park with potential a

community center, gymnasium and parking. The Mini Park will be constructed by the Developer, dedicated to the City in fee title, and maintained by the City with a to be determined level of funding from a proposed Patrick Henry Drive Specific Plan Community Facility District.

Due to the adjacent locations, shared access/connectivity, potential thematic and programmatic synergy, and public nature of the park and the recreational facility, the art center merits some consideration in the planning of the Mini Park. The community art center will be a first-floor condominium unit in the mixed-use building and dedicated to the City in fee title. The City will be responsible for the center's program, operations, maintenance, and tenant improvements. Due to the timing/schedule of the development application, the community outreach and interior design of the art center will occur separately from the Mini Park parcel.

DISCUSSION

The Parks & Recreation Commission will receive a presentation (Attachment 1) by the Developer for the proposed Mini Park schematic design at 3000 Patrick Henry Drive, initiate and invite public comment, and provide Commission feedback. An online survey soliciting community input will be posted on the City website after the Commission Meeting and will be open until December 2, 2022. A virtual community meeting will be held on Wednesday, November 22, 2022 to gather additional community input. The developer will provide a revised/preferred schematic design and master plan for the Mini Park and respond to the community input at a future meeting of the Parks & Recreation Commission for a possible recommendation to Council for approval.

ENVIRONMENTAL REVIEW

The action being considered does not constitute a "project" within the meaning of the California Environmental Quality Act ("CEQA") pursuant to CEQA Guidelines section 15378(b)(5) in that it is a governmental organizational or administrative activity that will not result in direct or indirect changes in the environment. The activity covered by this residential development project fall within the scope of the project analyzed under the Environmental Impact Report (EIR) for the Patrick Henry Specific Plan which included the construction of parks, which was approved on January 12, 2022 (Resolution No. 22-9061) pursuant to the California Environmental Quality Act (CEQA) (Public Resources Code Section 21000 et seq.).

FISCAL IMPACT

There is no fiscal impact to the General Fund for the capital construction of the Mini Park. The Developer will design and construct the Mini Park to City standards. The City's public parks & recreational programs are subject to a cost recovery policy where programs with high community benefit are subsidized at higher levels by the City General Fund, and programs with high individual, but low community benefit are subsidized at lower levels. Certain parks and recreation facilities that provide a higher level of service or are within a Community Facilities District, such as the Mini Park, have alternative funding sources for maintenance activities paid primary by the community/neighborhood which they serve.

COORDINATION

This report has been coordinated with the City Attorney's Office.

PUBLIC CONTACT

Public contact was made by posting the Parks & Recreation Commission agenda on the City's official -notice bulletin board outside City Hall Council Chambers. A complete agenda packet is available on

the City's website and in the City Clerk's Office at least 72 hours prior to a Regular Meeting and 24 hours prior to a Special Meeting. A hard copy of any agenda report may be requested by contacting the City Clerk's Office at (408) 615-2220, email clerk@santaclaraca.gov <<mailto:clerk@santaclaraca.gov>> <<<mailto:clerk@santaclaraca.gov>>>.

RECOMMENDATION

Provide input on a proposed Schematic Design for a New Mini Park to be located at 3000 Patrick Henry Drive.

Prepared by: Gina Saporito, Staff Analyst

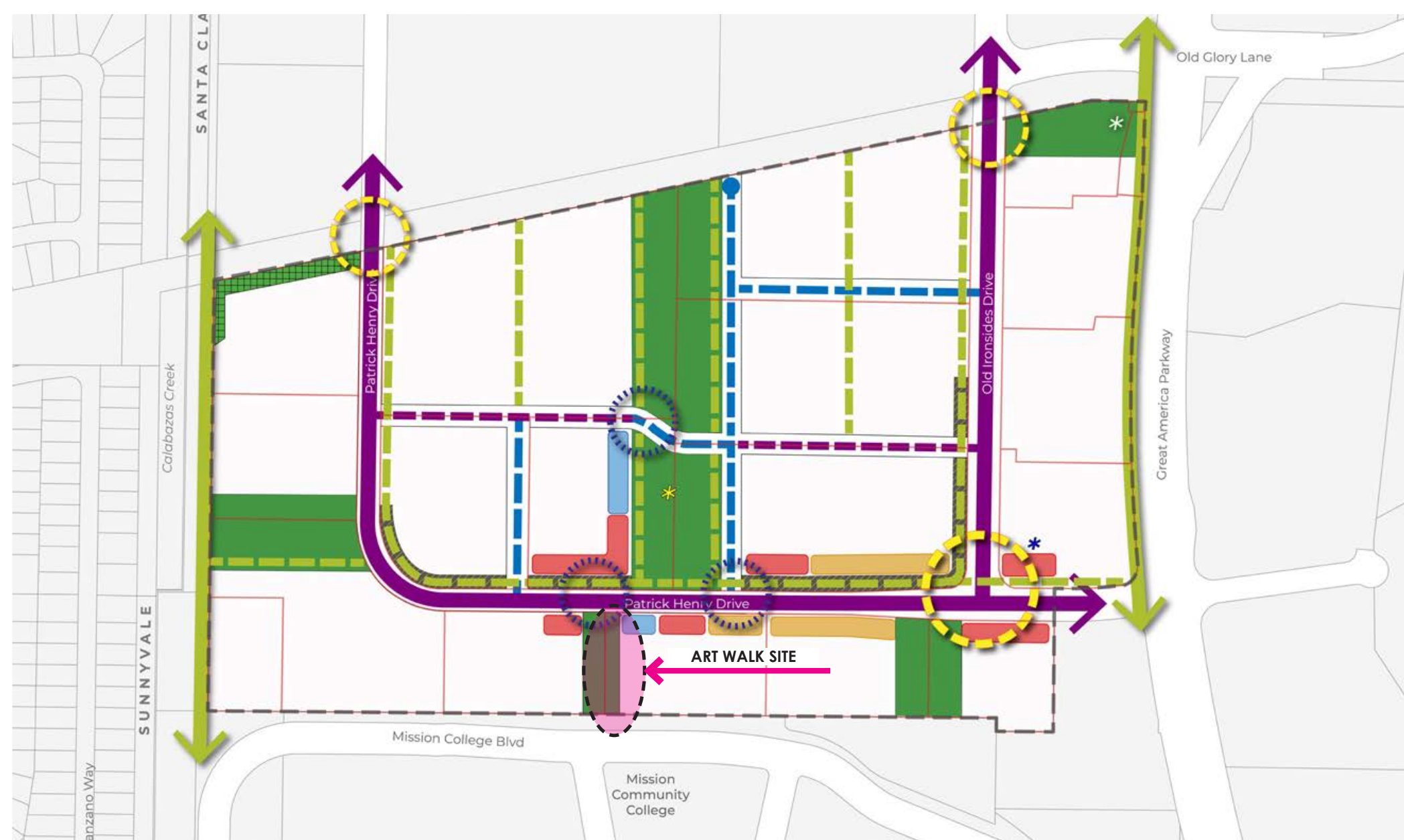
Approved by: James Teixeira, Director of Parks & Recreation

ATTACHMENTS

1. Mini Park Schematic Design Presentation - 3000 Patrick Henry Drive

**Developer Presentation
SummerHill Apartment Communities
Proposed Schematic Design for New Public Mini-Park
3000 Patrick Henry Drive
Patrick Henry Drive Specific Plan**

**City of Santa Clara
Parks & Recreation Commission
November 15, 2022
#22-1356**



- Public parkland only required with residential development
- Conceptual location of a future Library/Community Center
- No retail required if office is developed

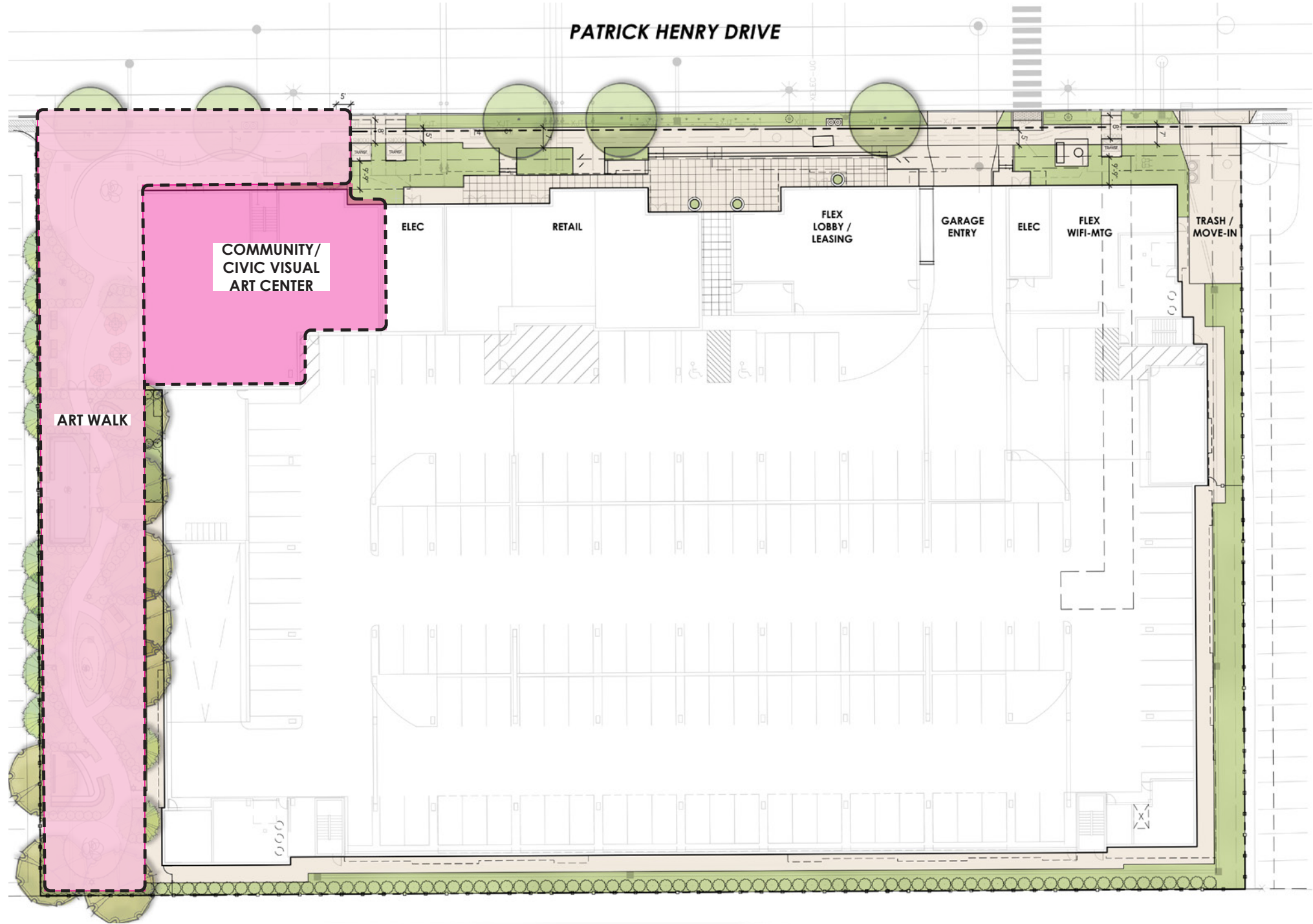
0 250 500 Feet

N

FIGURE 4.2: URBAN DESIGN FRAMEWORK

- | | | | | |
|---------------------------------------|-----------------------|--|------------------|----------------|
| Study Area | Retail | Potential Trail and Landscape Dedication | Existing Roadway | Activity Nodes |
| Existing Parcel (City of Santa Clara) | Community / Civic | Existing Greenway | Proposed Roadway | Gateways |
| Existing Parcel (Study Area) | Flex (Office, Retail) | Proposed Greenway | Slow Street | |
| Open Space | | | | |

PATRICK HENRY DRIVE



ART WALK

COMMUNITY / CIVIC VISUAL ART CENTER

ELEC

RETAIL

FLEX LOBBY / LEASING

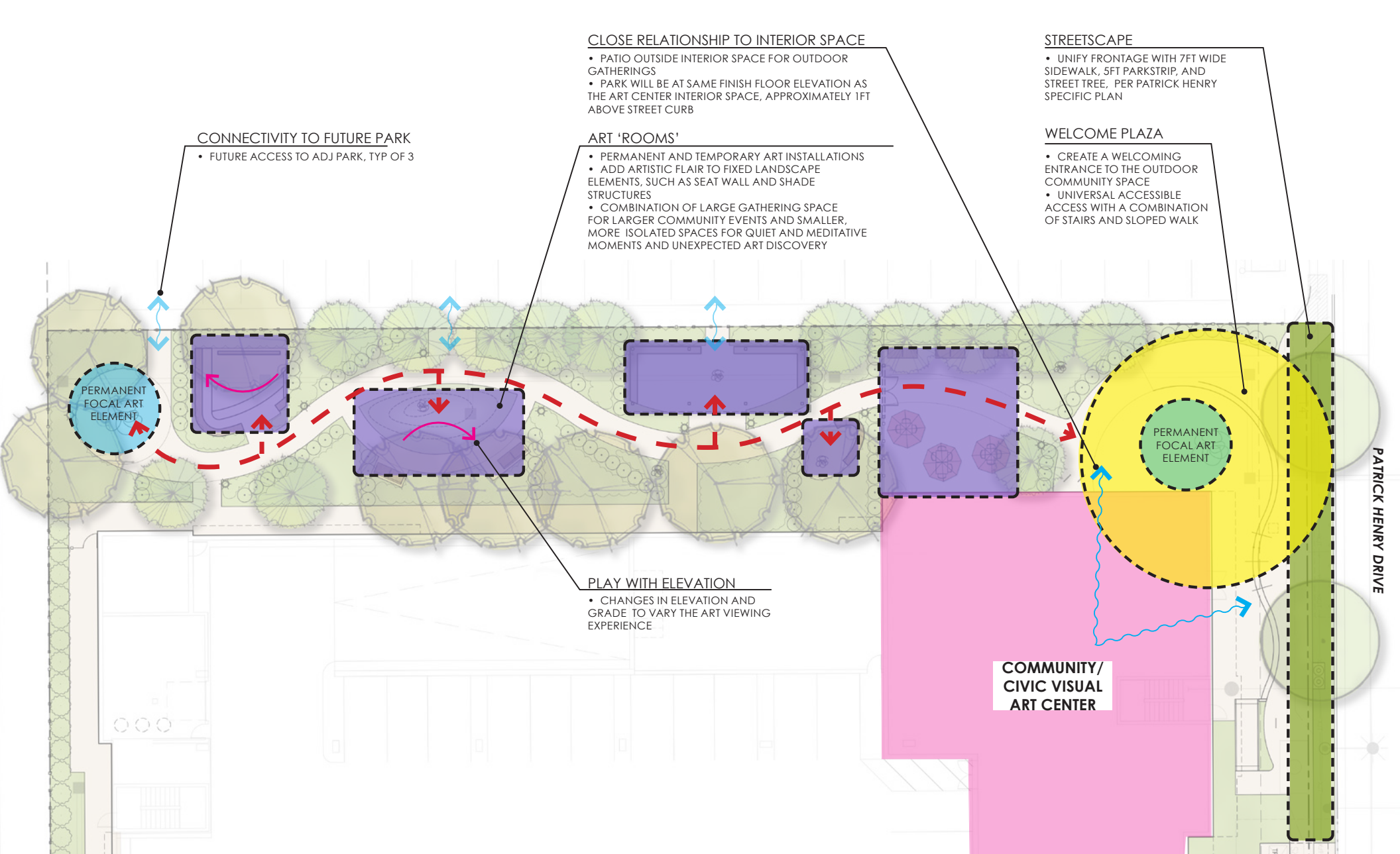
GARAGE ENTRY

ELEC

FLEX WIFI-MTG

TRASH / MOVE-IN





CONNECTIVITY TO FUTURE PARK

- FUTURE ACCESS TO ADJ PARK, TYP OF 3

CLOSE RELATIONSHIP TO INTERIOR SPACE

- PATIO OUTSIDE INTERIOR SPACE FOR OUTDOOR GATHERINGS
- PARK WILL BE AT SAME FINISH FLOOR ELEVATION AS THE ART CENTER INTERIOR SPACE, APPROXIMATELY 1FT ABOVE STREET CURB

ART 'ROOMS'

- PERMANENT AND TEMPORARY ART INSTALLATIONS
- ADD ARTISTIC FLAIR TO FIXED LANDSCAPE ELEMENTS, SUCH AS SEAT WALL AND SHADE STRUCTURES
- COMBINATION OF LARGE GATHERING SPACE FOR LARGER COMMUNITY EVENTS AND SMALLER, MORE ISOLATED SPACES FOR QUIET AND MEDITATIVE MOMENTS AND UNEXPECTED ART DISCOVERY

STREETScape

- UNIFY FRONTAGE WITH 7FT WIDE SIDEWALK, 5FT PARKSTRIP, AND STREET TREE, PER PATRICK HENRY SPECIFIC PLAN

WELCOME PLAZA

- CREATE A WELCOMING ENTRANCE TO THE OUTDOOR COMMUNITY SPACE
- UNIVERSAL ACCESSIBLE ACCESS WITH A COMBINATION OF STAIRS AND SLOPED WALK

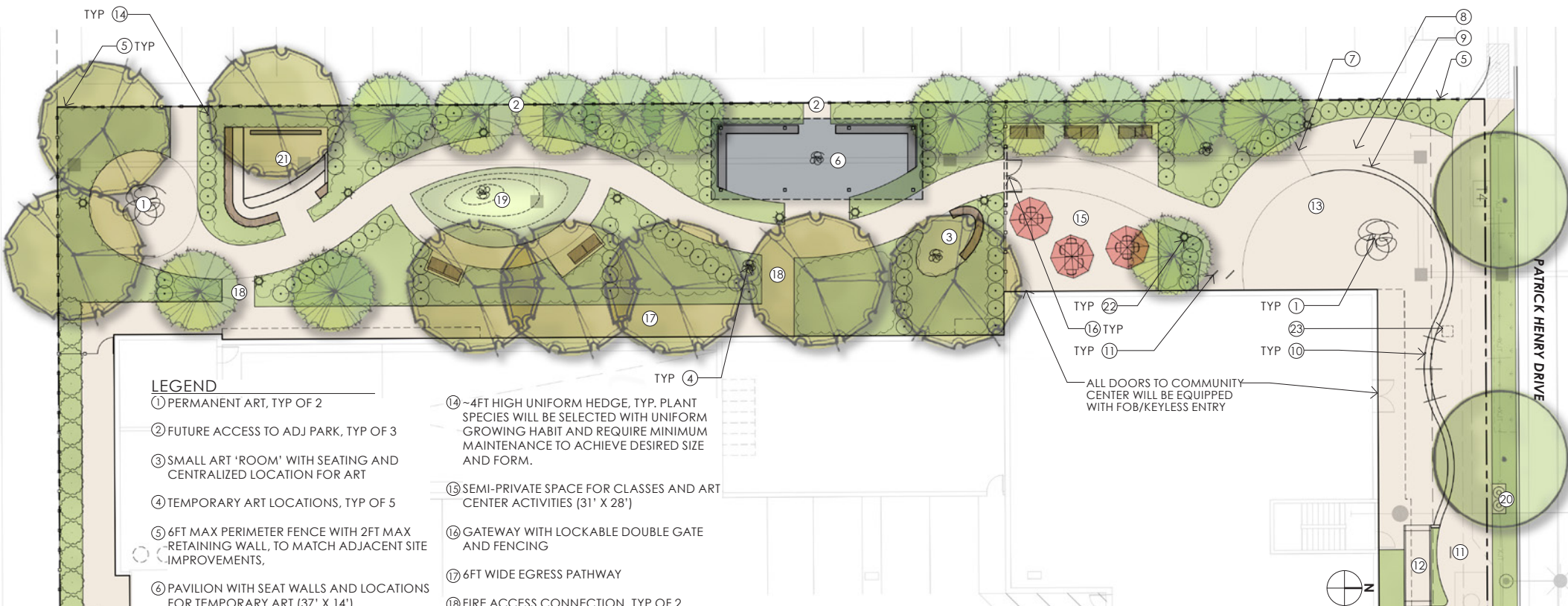
PLAY WITH ELEVATION

- CHANGES IN ELEVATION AND GRADE TO VARY THE ART VIEWING EXPERIENCE

**COMMUNITY/
CIVIC VISUAL
ART CENTER**

PATRICK HENRY DRIVE



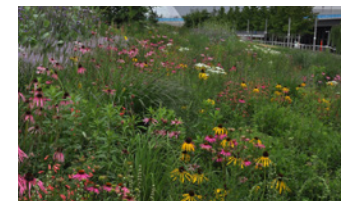
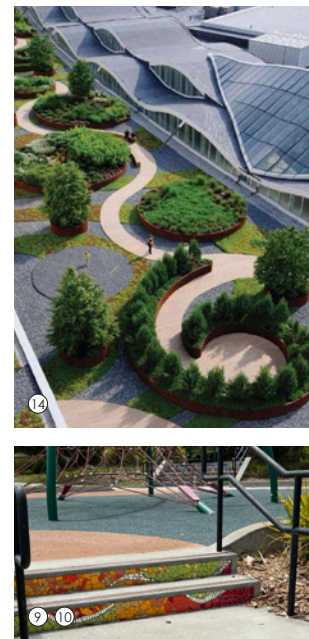
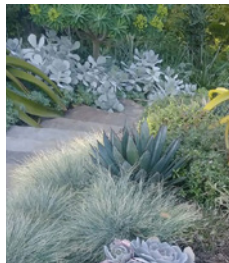


LEGEND

- ① PERMANENT ART, TYP OF 2
- ② FUTURE ACCESS TO ADJ PARK, TYP OF 3
- ③ SMALL ART 'ROOM' WITH SEATING AND CENTRALIZED LOCATION FOR ART
- ④ TEMPORARY ART LOCATIONS, TYP OF 5
- ⑤ 6FT MAX PERIMETER FENCE WITH 2FT MAX RETAINING WALL, TO MATCH ADJACENT SITE IMPROVEMENTS,
- ⑥ PAVILION WITH SEAT WALLS AND LOCATIONS FOR TEMPORARY ART (37' X 14')
- ⑦ APPROX. END OF SLOPED WALK AND STAIRS. AT THIS POINT PATIO ADJ TO COMMUNITY ROOM AND PARK IS LEVEL.
- ⑧ SLOPED WALK ENTRY
- ⑨ FEATHERED STEPS (2 RISERS REQ'D)
- ⑩ STAIRS AND HANDRAILS (2 RISERS REQ'D)
- ⑪ BIKE RACKS, TYP
- ⑫ RAMP AND HANDRAILS
- ⑬ PUBLIC PLAZA SPACE
- ⑭ ~4FT HIGH UNIFORM HEDGE, TYP. PLANT SPECIES WILL BE SELECTED WITH UNIFORM GROWING HABIT AND REQUIRE MINIMUM MAINTENANCE TO ACHIEVE DESIRED SIZE AND FORM.
- ⑮ SEMI-PRIVATE SPACE FOR CLASSES AND ART CENTER ACTIVITIES (31' X 28')
- ⑯ GATEWAY WITH LOCKABLE DOUBLE GATE AND FENCING
- ⑰ 6FT WIDE EGRESS PATHWAY
- ⑱ FIRE ACCESS CONNECTION, TYP OF 2
- ⑲ VEGETATED MOUND WITH LOCATION FOR ART
- ⑳ REFUSE AND RECYCLE RECEPTACLES
- ㉑ SUNKEN ART ROOM WITH PERMANENT PROJECTION PANEL. PANEL CAN BE USED FOR MOUNTED ART WHEN NOT USED FOR PROJECTIONS. (16' X 16')
- ㉒ BOLLARD LIGHT, TYP
- ㉓ LOCATION FOR A-FRAME SIGN OR BANNER

NOTE: LOCKED CONVENIENCE OUTLETS WILL BE PROVIDED THROUGHOUT THE ART PARK.

ALL DOORS TO COMMUNITY CENTER WILL BE EQUIPPED WITH FOB/KEYLESS ENTRY



IMAGERY INTENDED TO CONVEY GENERAL LOOK AND FEEL, NOT EXACT DESIGNS

PRELIMINARY PLANT PALETTE

SYMBOL	BOTANICAL NAME	COMMON NAME	CONT SIZE	SPACING	WTR USE
STREET TREES					
	CERCIS CANADENSIS	EASTERN REDBUD	36" BOX	PER PLAN	M
SCREEN & SHADE TREES					
	ACER RUBRUM	RED MAPLE	36" BOX	PER PLAN	M
	ARBUTUS 'MARINA'	STRAWBERRY TREE	36" BOX	PER PLAN	L
	LAURUS NOBILIS	SWEET BAY	36" BOX	PER PLAN	L
	LOPHOSTEMON CONFERTUS	BRISBANE BOX	36" BOX	PER PLAN	M
	PODOCARPUS MACROPHYLLUS 'MAKI'	SHRUBBY YEW PINE	36" BOX	PER PLAN	M
	QUERCUS AGRIFOLIA	LIVE OAK	36" BOX	PER PLAN	VL
SHRUBS, GRASSES & PERENNIALS					
	ACACIA COGNATA 'COUSIN ITT'	LITTLE RIVER WATTLE	5 GAL	4'-0" OC	L
	ACHILLEA 'MOONSHINE'	MOONSHINE YARROW	1 GAL	2'-0" OC	L
	AEONIUM D. 'SUNBURST'	COPPER PINWHEEL	1 GAL	1'-6" OC	L
	AGAVE ATTENUATA 'NOVA'	BLUE FOXTAIL AGAVE	5 GAL	3'-0" OC	L
	ANIGOZANTHOS 'BUSH PEARL'	KANGAROO PAWS	5 GAL	2'-0" OC	L
	ARCTOSTAPHYLOS X 'HOWARD MCMINNY'	HOWARD MCMINNY MANZANITA	5 GAL	5'-0" OC	L
	ASPIDISTRA ELATIOR	CAST IRON PLANT	1 GAL	2'-0" OC	L
	CALLISTEMON 'LITTLE JOHN'	DWARF CALLISTEMON	1 GAL	4'-0" OC	L
	CEANOTHUS 'SKYLARK'	WILD LILAC	1 GAL	5'-0" OC	L
	CORREA 'WINNS WONDER'	AUSTRALIAN FUCHSIA	1 GAL	3'-0" OC	L
	DIETES BICOLOR	FORTNIGHT LILY	5 GAL	3'-0" OC	L
	DODONAEA V. 'PURPUREA'	HOP BUSH	5 GAL	6'-0" OC	L
	GREVILLEA X 'NOELLI'	GREVILLEA	5 GAL	4'-0" OC	L
	HESPERALOE PARVIFOLIA	RED YUCCA	5 GAL	4'-0" OC	L
	KNIPHOFIA UVARIA 'BLAZE'	RED HOT POKER	1 GAL	3'-0" OC	L
	LANTANA MONTEVIDENSIS	LANTANA	5 GAL	3'-0" OC	L
	LEUCOPHYLLUM FRUTESCENS 'COMPACTA'	TEXAS RANGER	5 GAL	5'-0" OC	L
	LEYMUS C. 'CANYON PRINCE'	CANYON PRINCE WILD RYE	1 GAL	2'-0" OC	L
	LIBERTIA PEREGRINANS	ORANGE LIBERTIA	1 GAL	2'-0" OC	L
	LOMANDRA L. 'BREEZE'	DWARF MAT RUSH	1 GAL	3'-0" OC	L
	LOROPETALUM CHINENSE 'SHANG-WHITE'	HERALD SNOW FRINGE FLOWER	5 GAL	4'-0" OC	L
	MUHLENBERGIA DUBIA	PINE MUHLY	5 GAL	2'-6" OC	L
	PHORMIUM SPECIES	NEW ZEALAND FLAX	5 GAL	VARIES	L
	PITOSPORUM TENUIFOLIUM 'GOLF BALL'	GOLF BALL PITOSPORUM	5 GAL	4'-0" OC	L
	PITOSPORUM TOBIRA 'VARIEGATA'	VARIEGATED MOCK ORANGE	5 GAL	4'-0" OC	L
	ROSMARINUS 'TUSCAN BLUE'	ROSEMARY	5 GAL	4'-0" OC	L
	SALVIA LEUCANTHA 'SANTA BARBARA'	MEXICAN BUSH SAGE	5 GAL	4'-0" OC	L
	SANTOLINA CHAMAECYPARISSUS	GRAY LAVENDER COTTON	1 GAL	3'-0" OC	L
	SOLLYA HETEROPHYLLA	AUSTRALIAN BLUEBELL	5 GAL	3'-0" OC	L
GROUND COVER					
	CEANOTHUS 'YANKEE POINT'	CALIFORNIA LILAC	1 GAL	4'-0" OC	L
	CISTUS S. 'PROSTRATUS'	SAGELEAF ROCKROSE	1 GAL	4'-0" OC	L
	MYOPORUM PARVIFOLIA	MYOPORUM	1 GAL	4'-0" OC	L
	SEDUM PALMERI	STONECROP	1 GAL	1'-6" OC	L
	SENECIO SERPENS	BLUE CHALK STICK	1 GAL	2'-0" OC	L
	STACHYS BYZANTINA	LAMB'S EAR	1 GAL	1'-6" OC	L

PLANT IMAGERY



CERCIS CANADENSIS ACER RUBRUM ARBUTUS 'MARINA' LAURUS NOBILIS LOPHOSTEMON CONFERTUS QUERCUS AGRIFOLIA



ACACIA C. 'COUSIN ITT' ACHILLEA 'MOONSHINE' AEONIUM D. 'SUNBURST' AGAVE ATTENUATA 'NOVA' ANIGOZANTHOS 'BUSH PEARL' ASPIDISTRA ELATIOR



DIETES BICOLOR DODONAEA V. 'PURPUREA' HESPERALOE PARVIFOLIA LANTANA MONTEVIDENSIS LEYMUS C. 'CANYON PRINCE' LOMANDRA L. 'BREEZE'



LOROPETALUM 'SHANG-WHITE' PITOSPORUM 'GOLF BALL' SANTOLINA CHAMAECYPARISSUS SEDUM PALMERI SENECIO SERPENS STACHYS BYZANTINA

Next Steps

- Commission Comments/Questions
- Public Input Process
 - Public Comment
 - On-line Survey
 - Community Meeting
 - Parks & Recreation Commission Meeting
 - Other
- Preferred Schematic Design responsive to public input
- Recommendation to Council



Agenda Report

22-1328

Agenda Date: 11/15/2022

REPORT TO PARKS & RECREATION COMMISSION

SUBJECT

Parks & Recreation Commission Work Plan Goals for FY2022/23

COUNCIL PILLAR

Enhance Community Engagement and Transparency

Enhance Community Sports, Recreational and Arts Assets

BACKGROUND

Annually, the Parks & Recreation Commission (Commission) considers three to five specific, measurable, attainable, realistic, and time-bound Work Plan goals and/or activities for the year. These are intended to focus Commission efforts and respond to community and City Council priorities within existing budget direction, resource limitations, and the purview of the Commission as set forth in the City Charter and City Code.

At the October 18, 2022 Parks & Recreation Commission meeting, the Commission adopted the following Work Plan Goals for FY2022/23:

- Goal A: 1) Review park site and facility condition assessments and recommend priorities given existing and anticipated service levels and available resources.
- Goal B: 1) Review and solicit community input on the existing City park rehabilitation projects based on the current Capital Improvement Program (CIP) Budget and schedule; and 2) review residential developer proposed schematic designs for new neighborhood parks that serve new residential development.
- Goal C: 1) Host and develop recommendations for the 41st annual Santa Clara Art & Wine Festival to be held September 16 and 17, 2023; and 2) participate in Citywide Special events.
- Goal D: 1) Explore and partner with at least one other City commission to build on/expand at least one existing Parks & Recreation Commission event by adding one extra element for patrons to interact with during the event.

DISCUSSION

The Commission discusses the Work Plan at the regular monthly Commission meeting and makes subcommittee assignments as necessary. Subcommittee are comprised of less than a quorum of the Commission. Between meetings, Commissioners work on the activities. At the November meeting, each subcommittee will provide an update regarding their efforts and activities in support of the FY2022/23 Work Plan Goals.

ENVIRONMENTAL REVIEW

The action being considered does not constitute a “project” within the meaning of the California Environmental Quality Act (“CEQA”) pursuant to CEQA Guidelines section 15378(b)(5) in that it is a governmental organizational or administrative activity that will not result in direct or indirect changes in the environment.

PUBLIC CONTACT

Public contact was made by posting the Parks & Recreation Commission agenda on the City’s official -notice bulletin board outside City Hall Council Chambers. A complete agenda packet is available on the City’s website and in the City Clerk’s Office at least 72 hours prior to a Regular Meeting and 24 hours prior to a Special Meeting. A hard copy of any agenda report may be requested by contacting the City Clerk’s Office at (408) 615-2220, email clerk@santaclaraca.gov <<mailto:clerk@santaclaraca.gov>>.

RECOMMENDATION

Report on activities and efforts in support of the Commission’s Work Plan Goals for FY 2022/23.

Reviewed by: Dale Seale, Deputy Parks & Recreation Director

Approved by: James Teixeira, Director of Parks & Recreation