



GATEWAY CROSSINGS NEIGHBORHOOD PARK

Parks & Recreation Commission
Community Feedback Summary

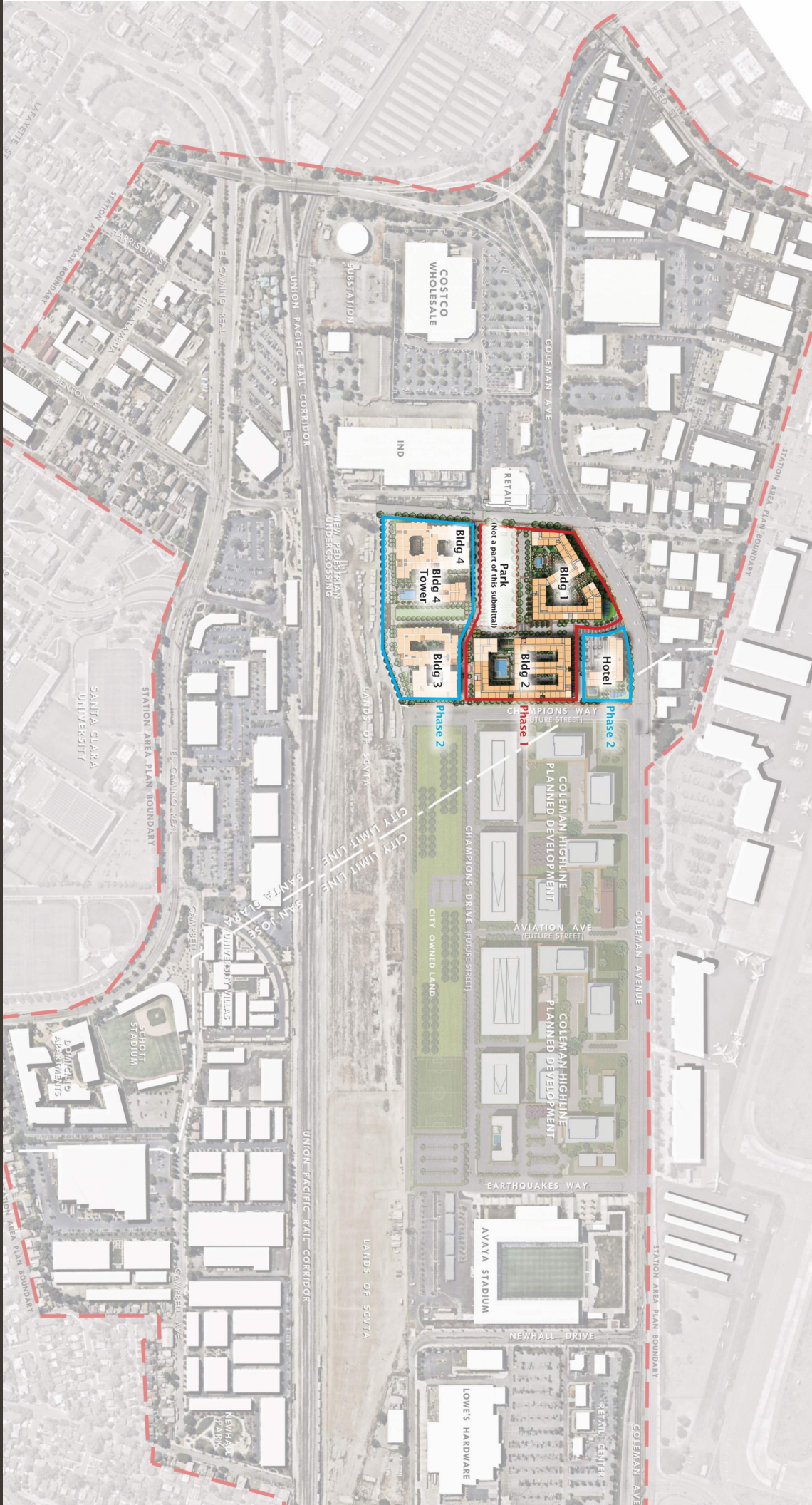
H
HOLLAND

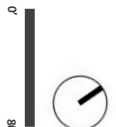
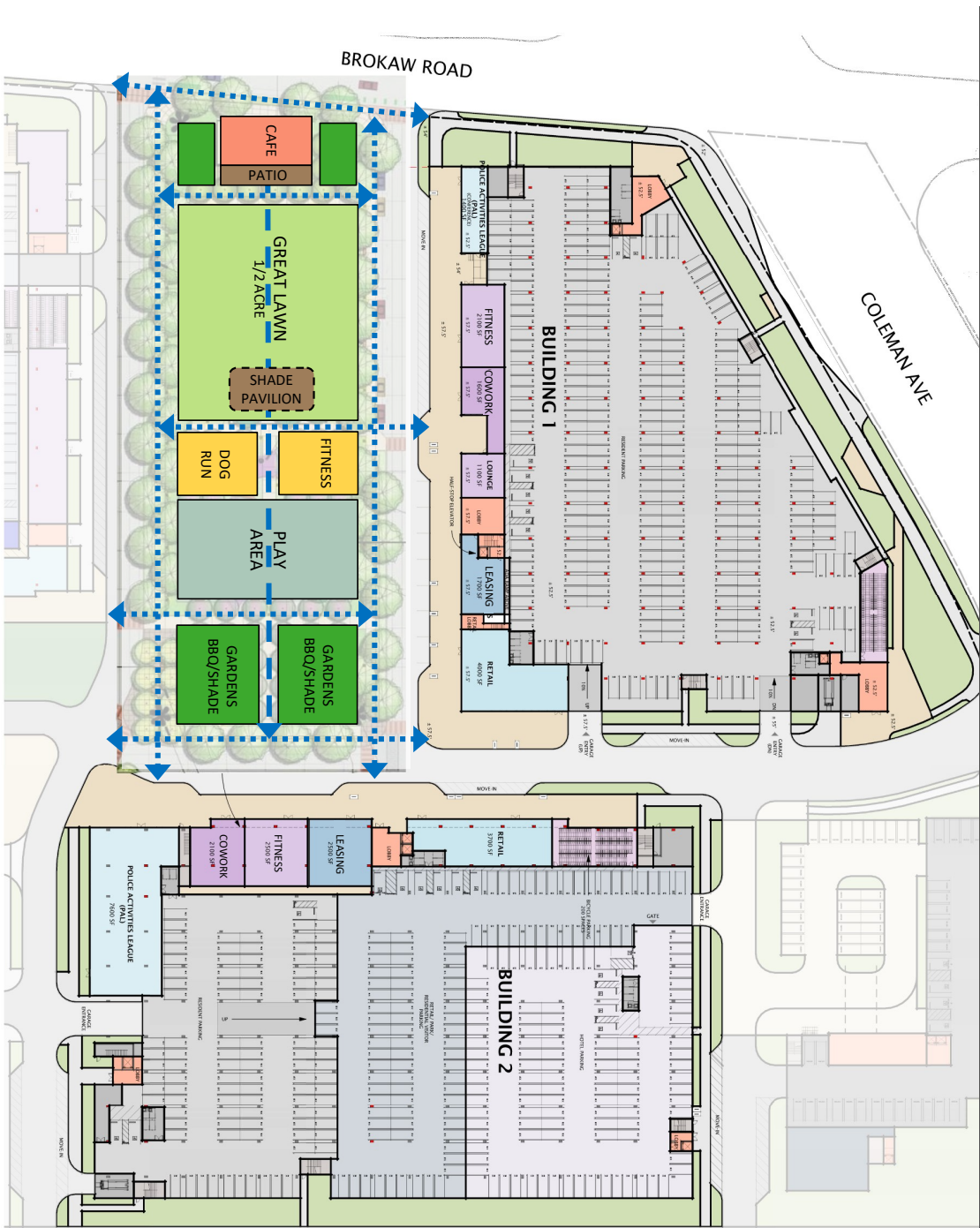
PARTNER GROUP

PETERSEN STUDIO

November 16, 2021

PARK SITE /
2019 PARK PLAN





GATEWAY CROSSINGS NEIGHBORHOOD PARK COMMUNITY FEEDBACK

- Community Meeting, July 07
- Parks & Recreation Commission Meeting, July 20
- Online Community Survey: 280 Responses Received
3.5 Weeks, July 8 - August 4
- In-person Celebrate Santa Clara Outreach Event, August 21: +120 Participants
- Over 400 Community Members have provided Feedback



Let us know which **activities and features** you would like the park to include by marking the circles next to your **4 highest priorities** in each category. We appreciate your input.



2019 program + options

- multi-use lawn**
- maximize open flat lawn
- increase tree-shading at edges
- integrate topography at edges
- integrate active park elements with lawn
- children's play area**
- equipment-based play
- themed play area
- environmental play
- public art**
- modest sculptures at park corners
- larger single integrated sculpture
- interactive art element
- gardens within park**
- herb garden at outdoor BBQ areas
- horticultural display garden
- xeric display garden
- rain garden – environmental education



supplemental features

- garden room / reading room
- tree-shaded grove
- bocce
- shuffleboard
- table tennis
- foosball
- climbing wall (low and safe for kids)
- walking loop
- movable furnishings
- communal fire feature
- community notice board
- write-in _____
- write-in _____



park activities

- quite relaxation or reading
- pickup sports
- fitness classes, tai chi, yoga (on lawn or deck)
- outdoor fitness with equipment
- performances
- food truck access
- outdoor cooking & dining (BBQ areas)
- dog walking & play
- activities for kids
- write-in _____
- write-in _____

MULTI-USE LAWN – Survey Options

- MAXIMIZE FLAT OPEN LAWN
- INTEGRATE TOPOGRAPHY – PLAY, SEATING, PROSPECT
- INTEGRATE ACTIVE PARK ELEMENTS WITH CENTRAL LAWN
- EXPAND TREE-SHADED LAWN EDGES



PETERSEN STUDIO

MAXIMIZE FLAT OPEN LAWN

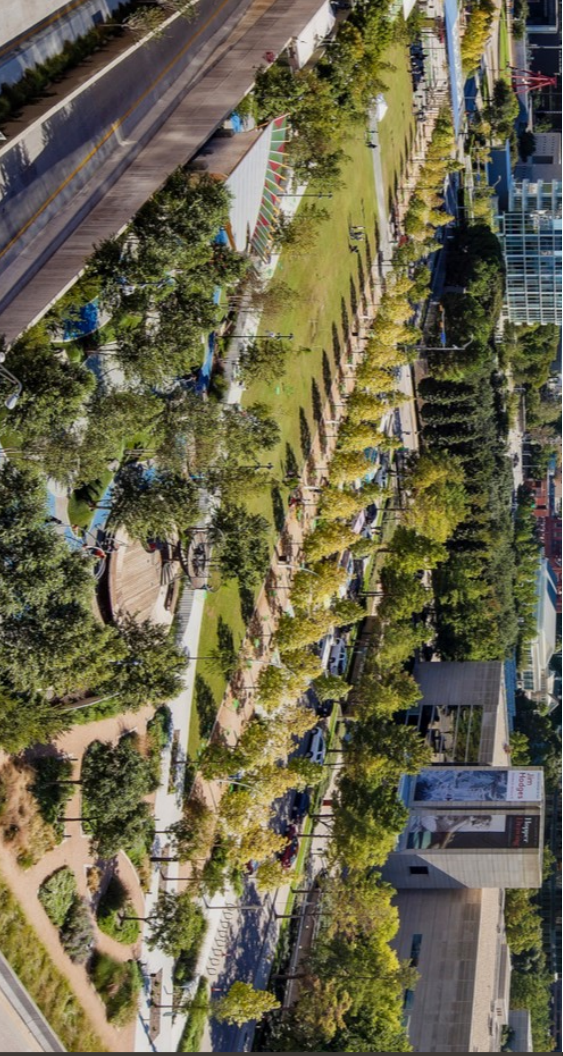
5%



PETERSEN STUDIO

INTEGRATE TOPOGRAPHY – PLAY, SEATING, PROSPECT

13%



PETERSEN STUDIO



INTEGRATE ACTIVE PARK ELEMENTS WITH CENTRAL LAWN

38%



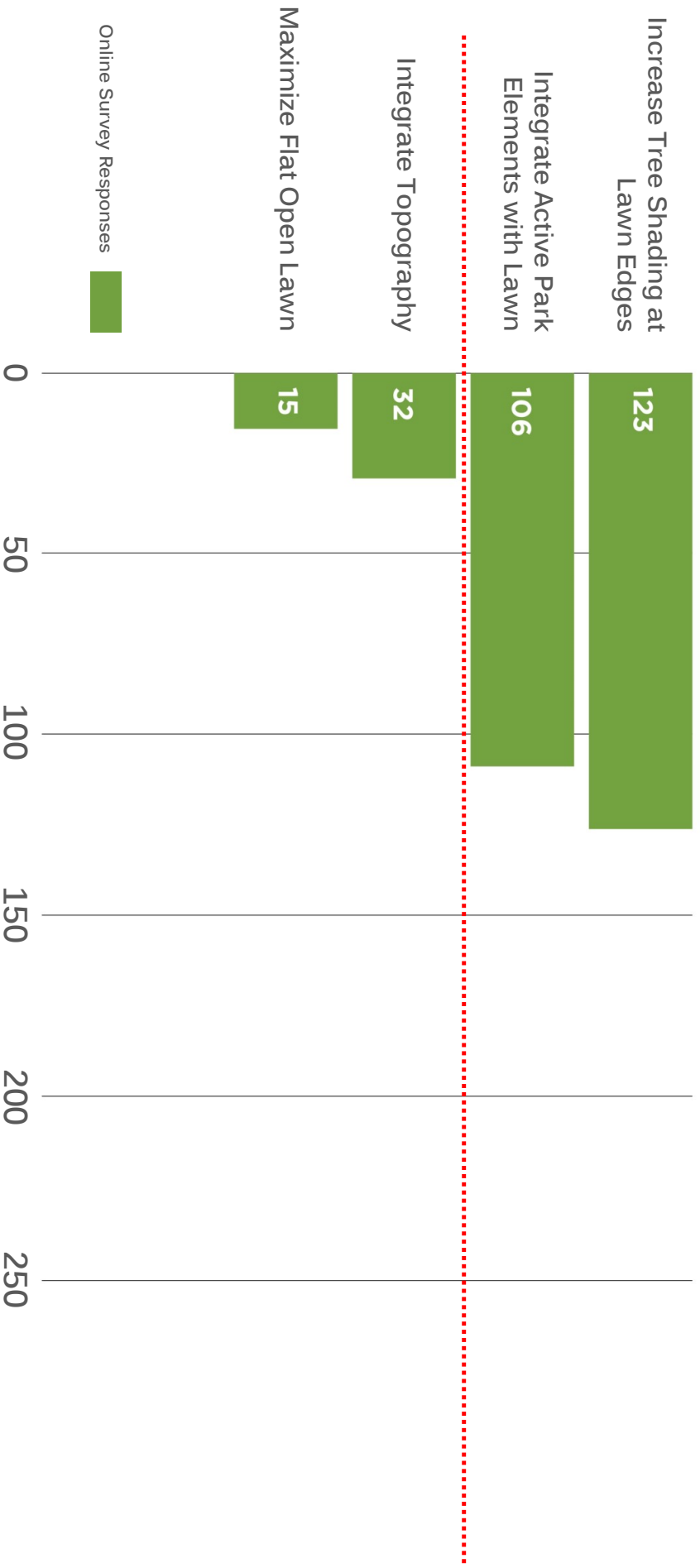
44%

PETERSEN STUDIO

EXPAND TREE-SHADED LAWN EDGES

MULTI-USE LAWN

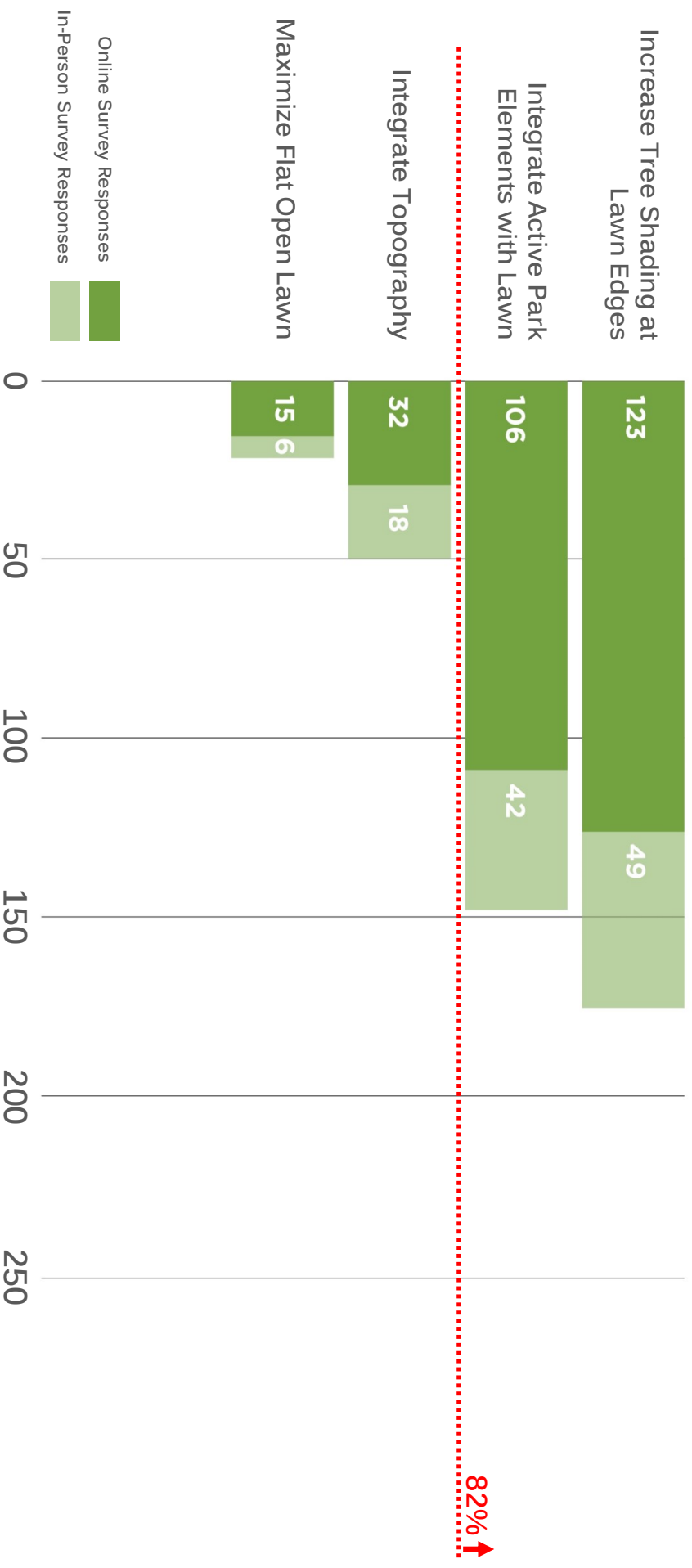
The ½-acre multi-use lawn is the park's largest element.
How would you like us to configure the multi-use lawn?



MULTI-USE LAWN

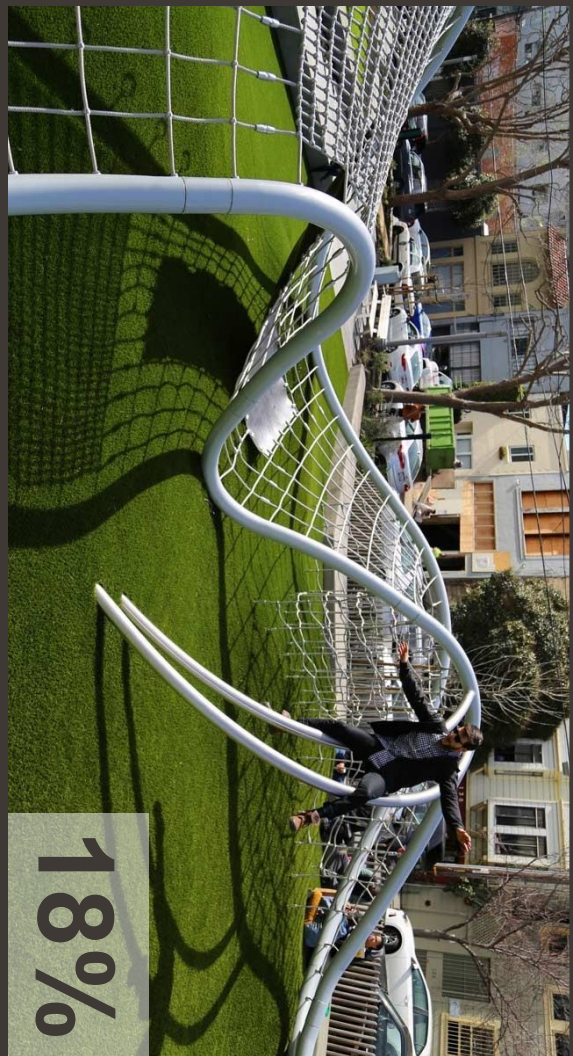
391 RESPONSES

The 1/2-acre multi-use lawn is the park's largest element.
How would you like us to configure the multi-use lawn?



PLAY AREA - Survey Options

- EQUIPMENT-BASED PLAY AREA
- THEMED PLAY
- ENVIRONMENTAL PLAY



PETERSEN STUDIO

EQUIPMENT-BASED PLAY AREA

18%



PETERSEN STUDIO



18%

THEMED PLAY



PETERSEN STUDIO

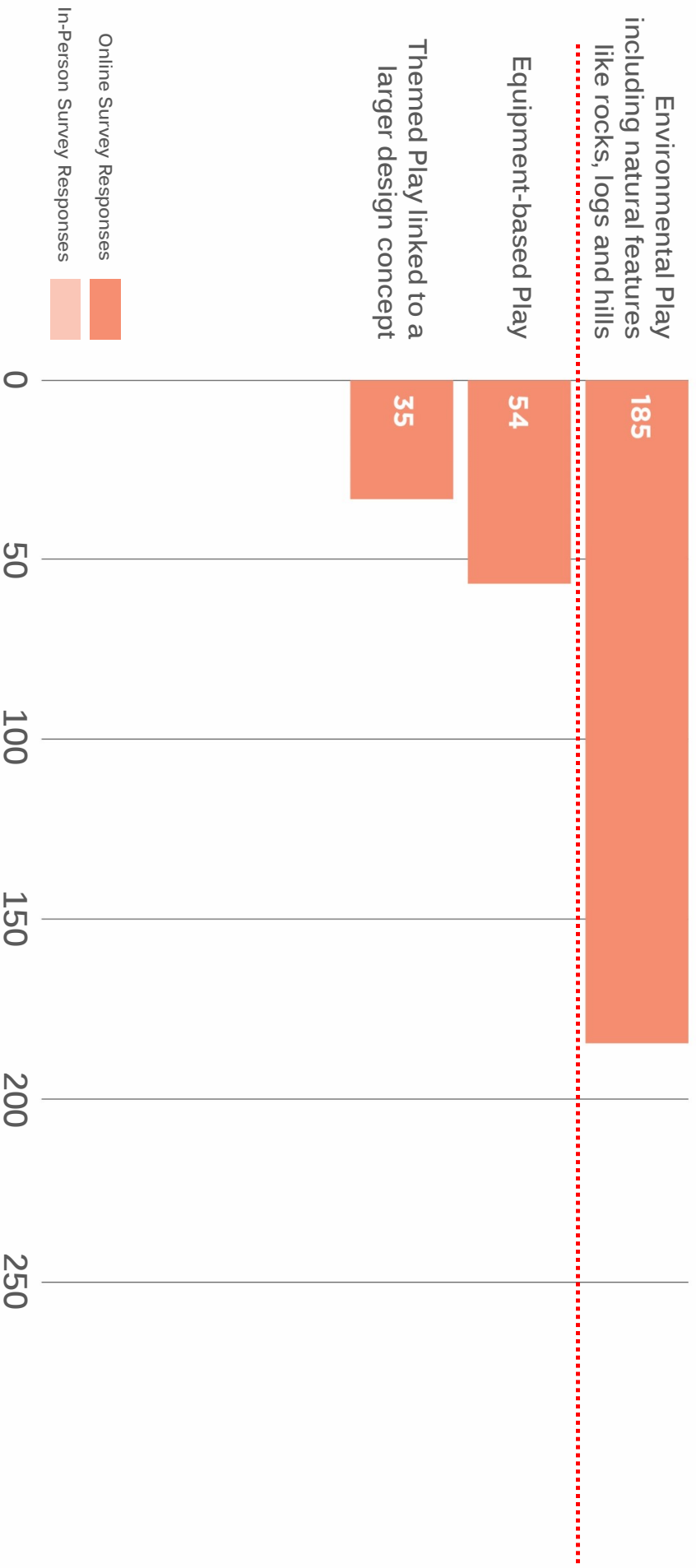
ENVIRONMENTAL PLAY

64%

PLAY AREA

404 RESPONSES

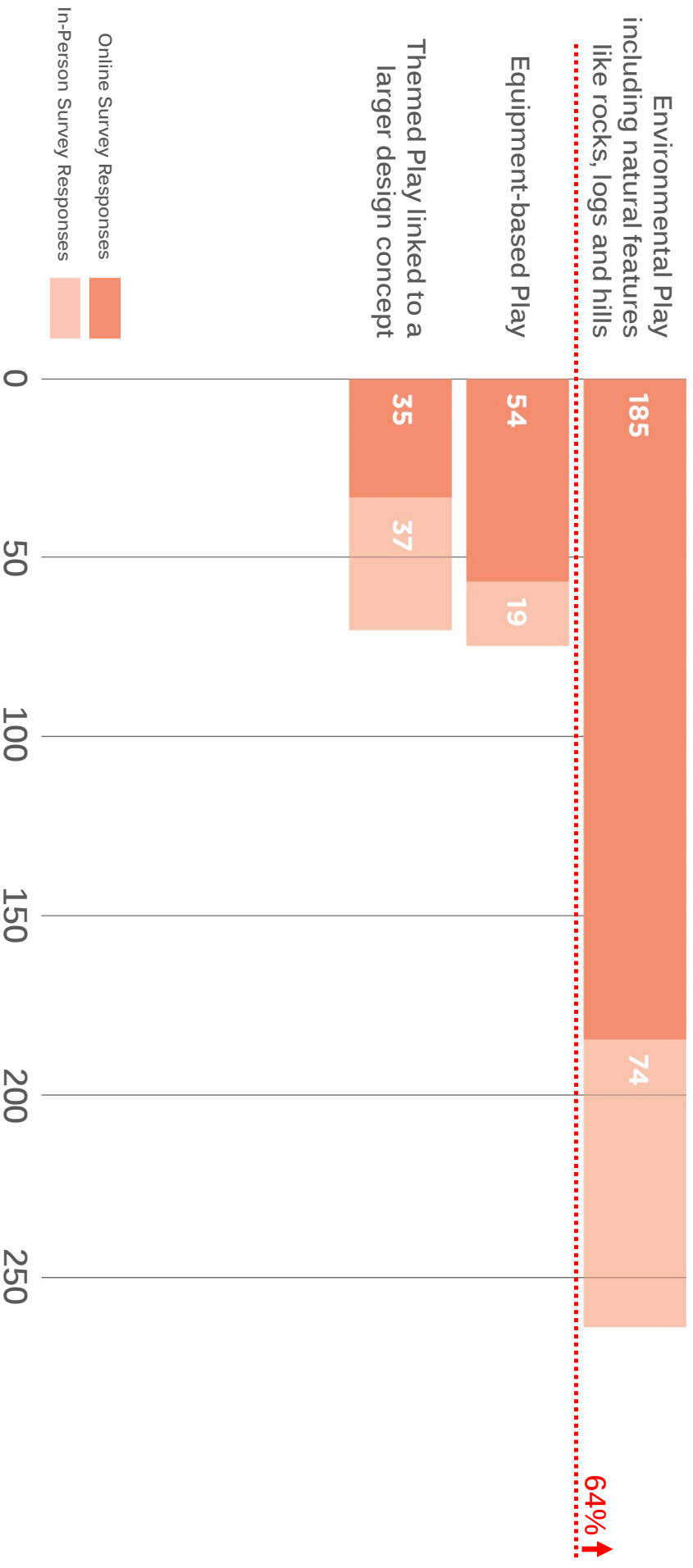
The play area will accommodate multiple age groups and ability levels.
What type of experiences should the children's play area prioritize?



PLAY AREA

404 RESPONSES

The play area will accommodate multiple age groups and ability levels.
What type of experiences should the children's play area prioritize?



PUBLIC ART - Survey Options

- PARK-SCALE INTEGRATED ART ELEMENT
- SMALL-SCALE ART AT PARK CORNERS
- INTERACTIVE ART



14%

PETERSEN STUDIO

PARK-SCALE INTEGRATED ART ELEMENT



PETERSEN STUDIO

SMALL-SCALE ART AT PARK CORNERS

24%



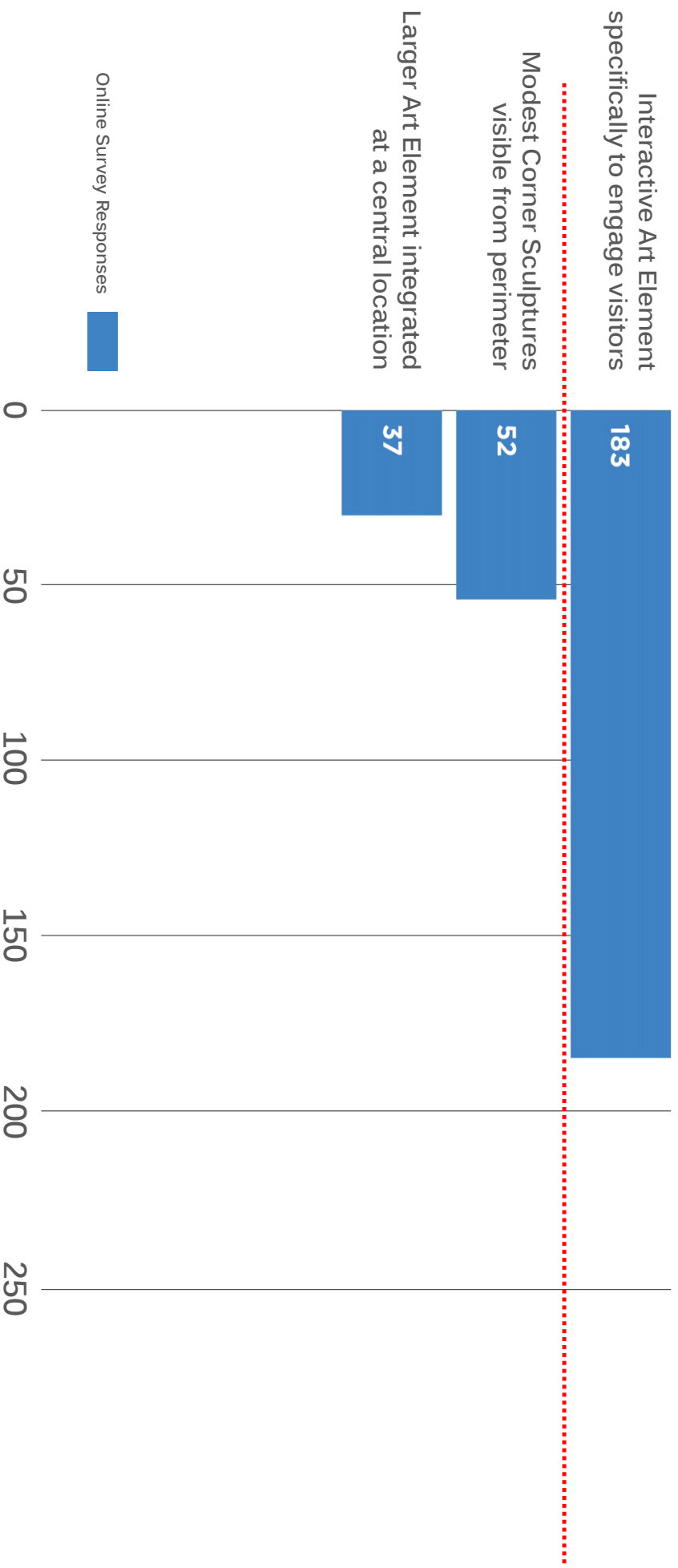
PETERSEN STUDIO

INTERACTIVE ART

62%

PUBLIC ART

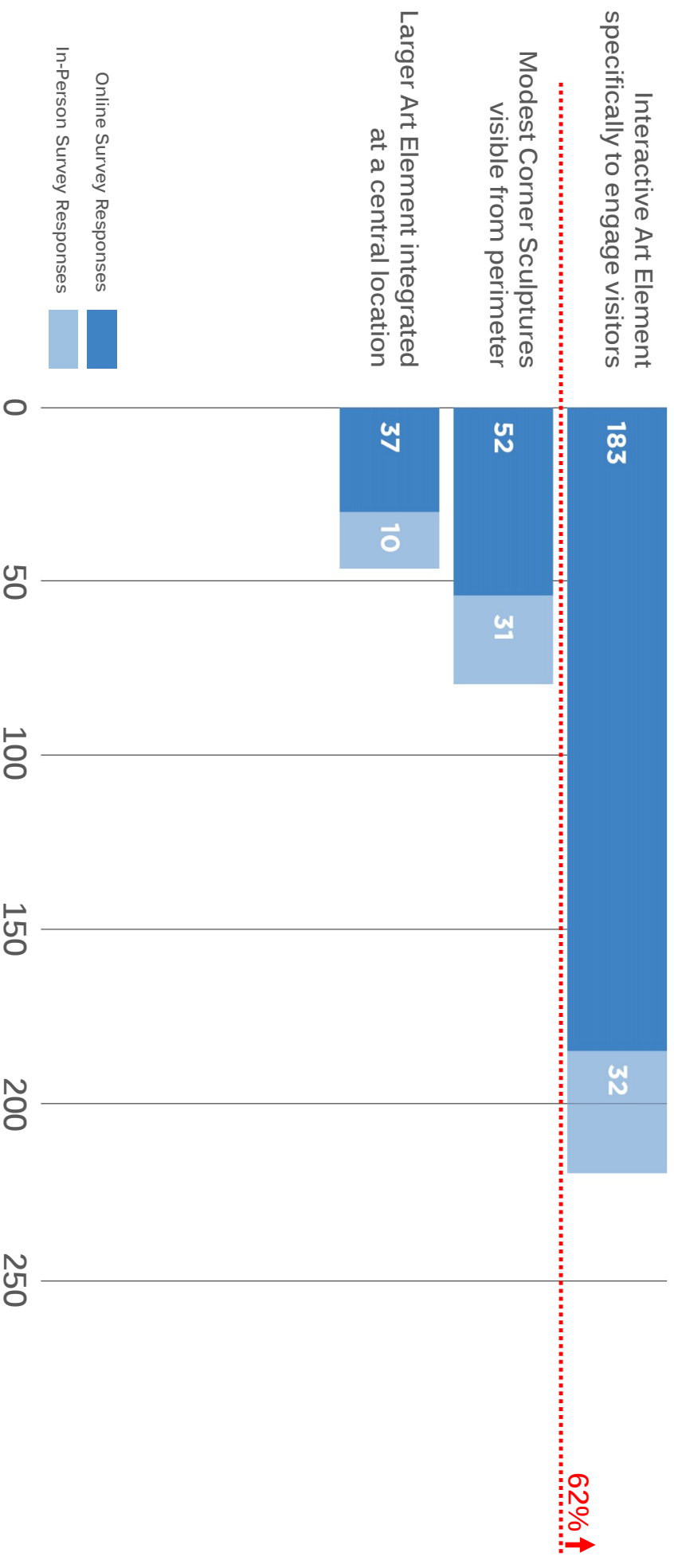
How should public art be expressed and experienced within the park?



PUBLIC ART

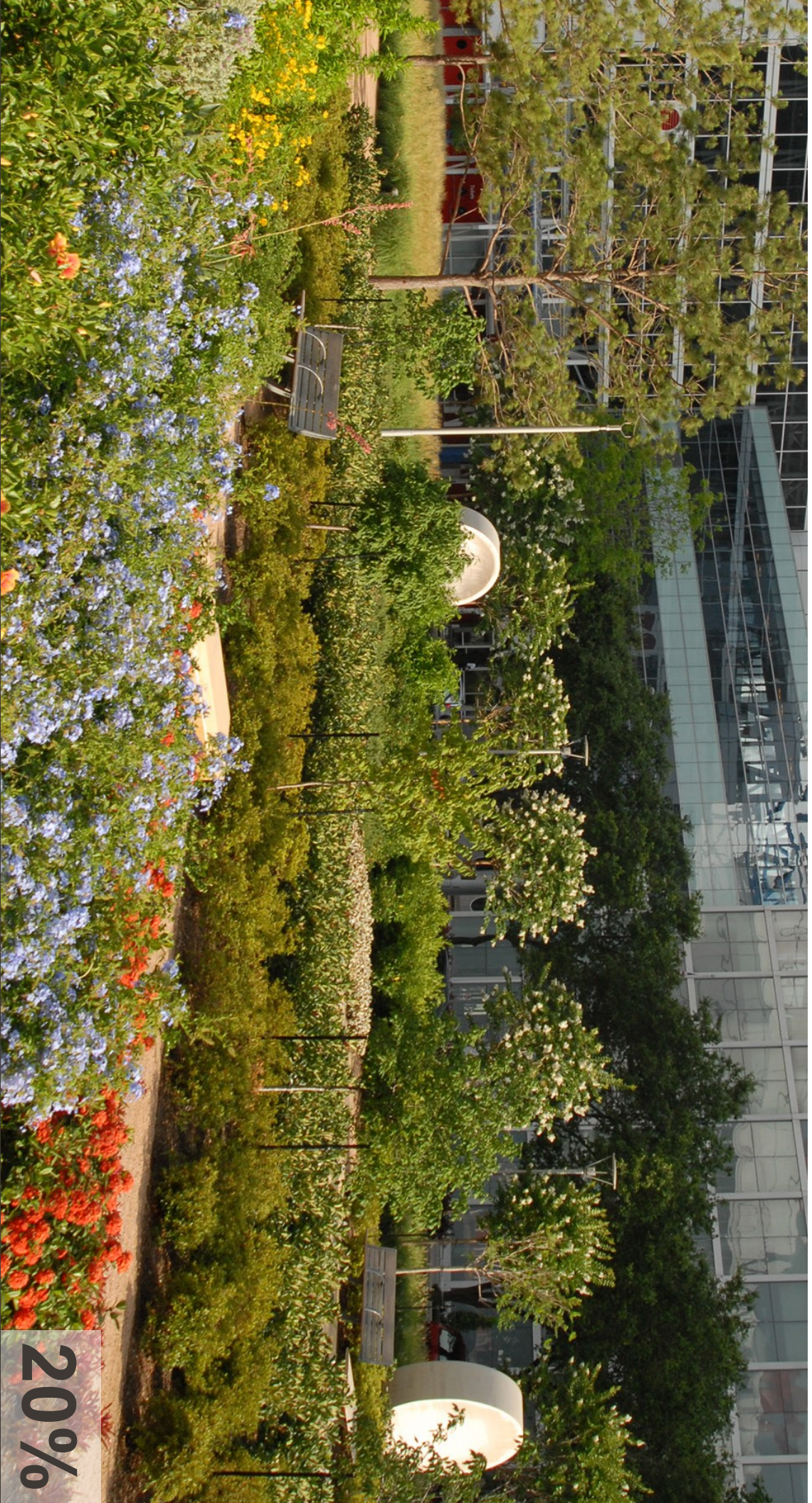
345 RESPONSES

How should public art be expressed and experienced within the park?



GARDEN - Survey Options

- HORTICULTURAL DISPLAY GARDEN
- XERIC DISPLAY GARDEN
- HERB GARDEN AT BBQ / DINING AREAS
- RAIN GARDEN – ENVIRONMENTAL EDUCATION



PETERSEN STUDIO

HORTICULTURAL DISPLAY GARDEN WITH PROGRAM

20%



Photo: Succulents, Robin Stockwell

25%

PETERSEN STUDIO

XERIC DISPLAY GARDEN - MINIMAL IRRIGATION



PETERSEN STUDIO

HERB GARDEN AT DINING / BBQ AREAS

28%



PETERSEN STUDIO

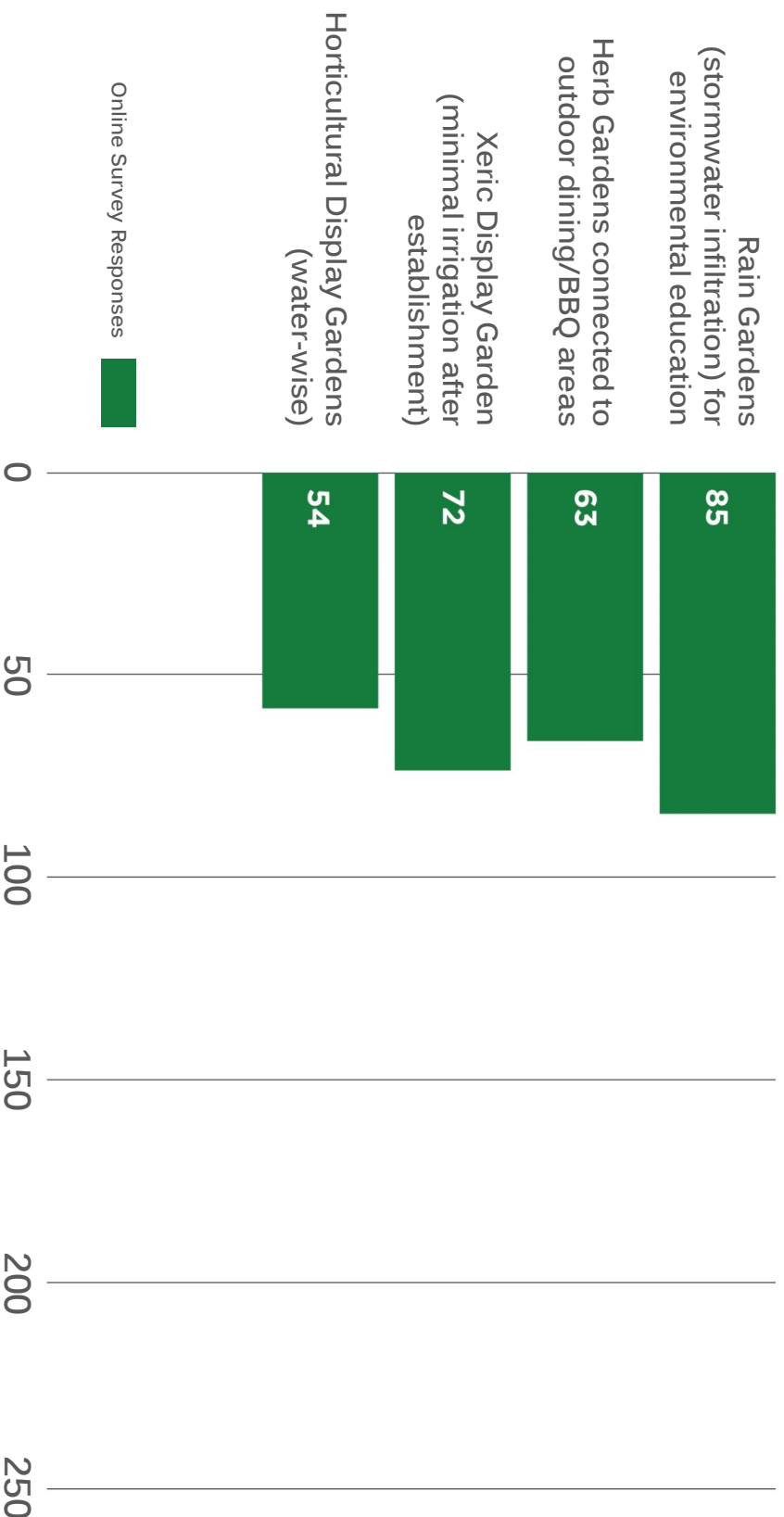
RAIN GARDEN - ENVIRONMENTAL EDUCATION

Photo: Bruce Forster

28%

GARDENS

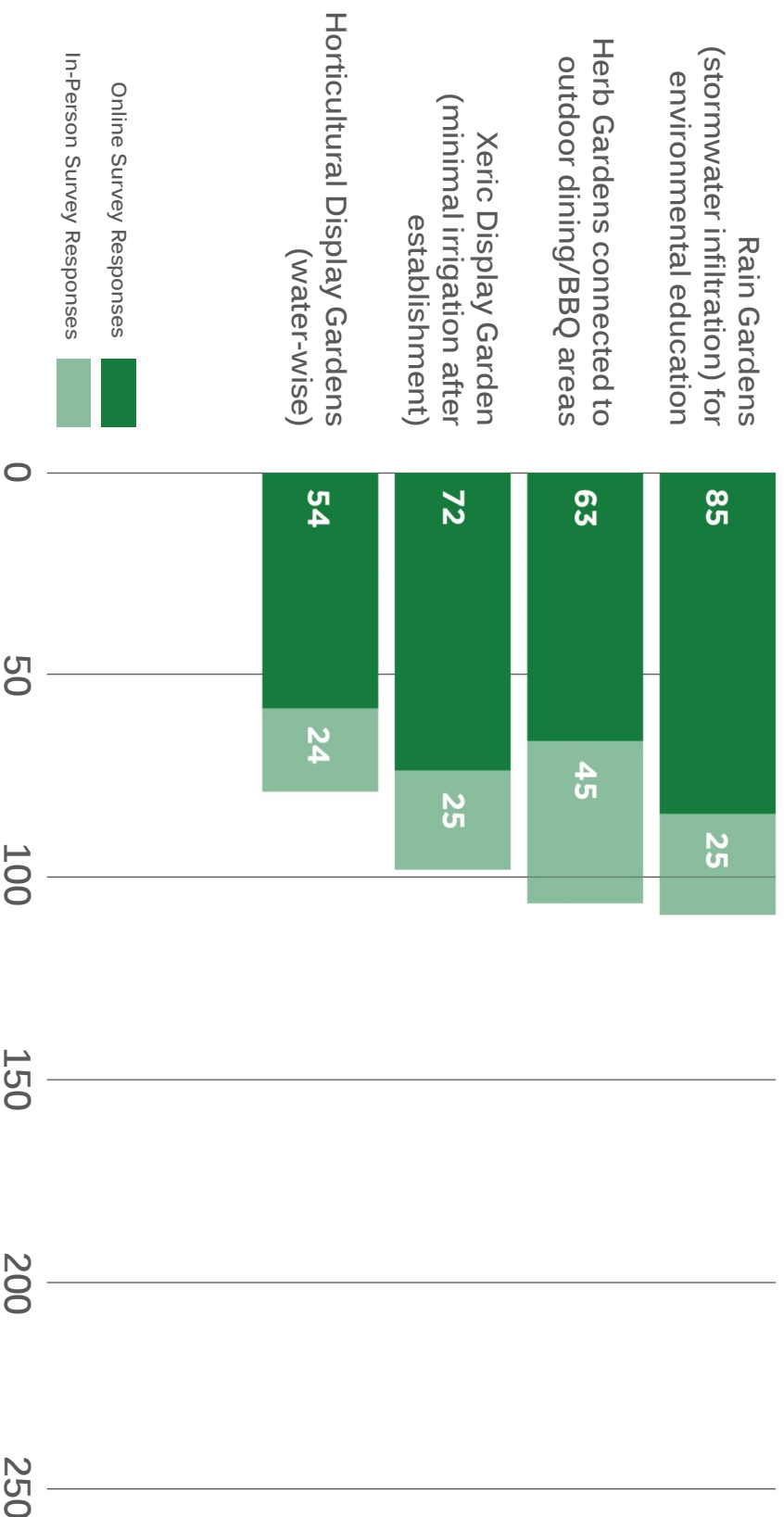
What type of gardens/landscape would you like at the park?



GARDENS

393 RESPONSES

What type of gardens/landscape would you like at the park?



SUPPLEMENTAL FEATURES

Let us know which **activities and features** you would like the park to include by marking the circles next to your **4 highest priorities** in each category. We appreciate your input.



entitled program options

- multi-use lawn
 - maximize open flat lawn
 - increase tree-shading at edges
 - integrate topography at edges
 - integrate active park elements with lawn
- children's play area
 - equipment-based play
 - themed play area
 - environmental play
- public art
 - modest sculptures at park corners
 - larger single integrated sculpture
 - interactive art element
- gardens within park
 - herb garden at outdoor BBQ areas
 - horticultural display garden
 - xeric display garden
 - rain garden – environmental education



supplemental features

- garden room / reading room
- tree-shaded grove
- bocce
- shuffleboard
- table tennis
- foosball
- climbing wall (low and safe for kids)
- walking loop
- movable furnishings
- communal fire feature
- community notice board
- write-in _____
- write-in _____

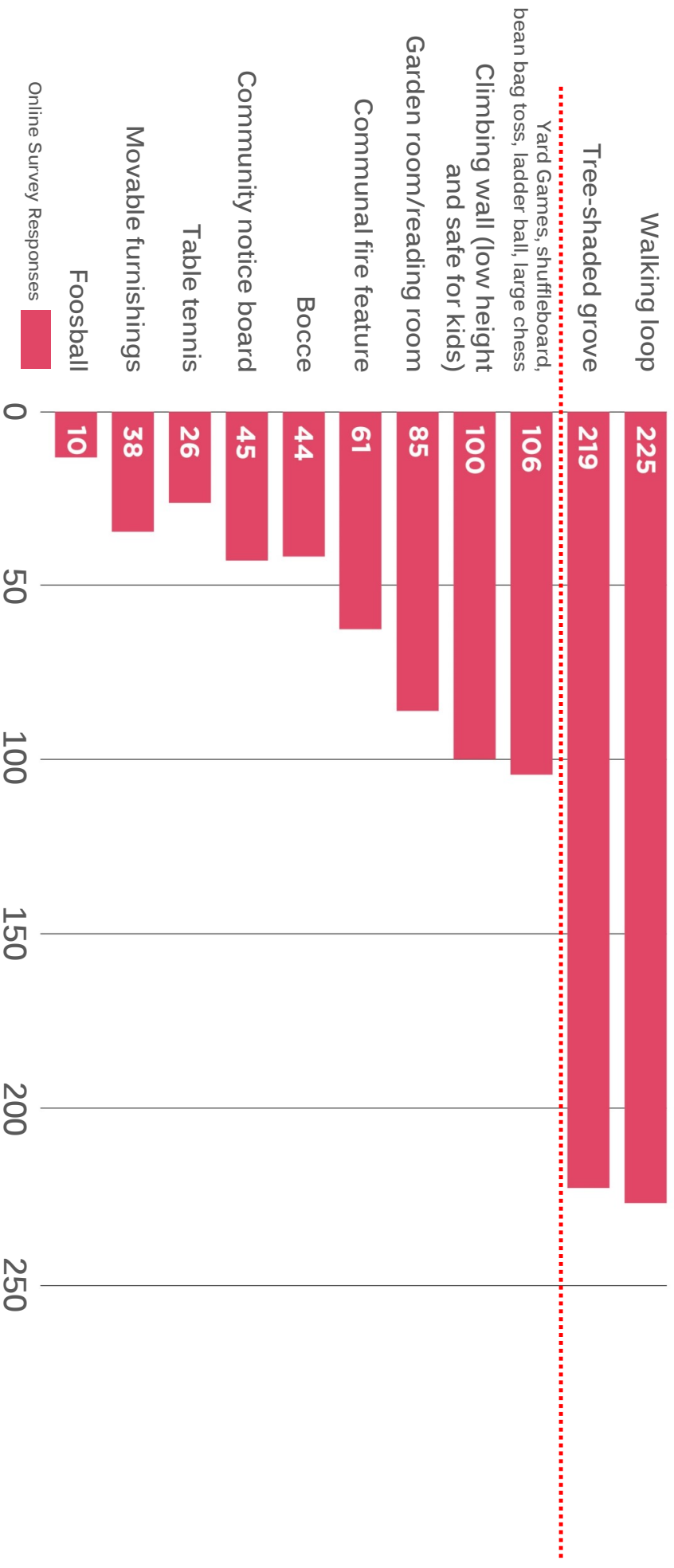


park activities

- quite relaxation or reading
- pickup sports
- fitness classes, tai chi, yoga (on lawn or deck)
- outdoor fitness with equipment
- performances
- food truck access
- outdoor cooking & dining (BBQ areas)
- dog walking & play
- activities for kids
- write-in _____
- write-in _____

SUPPLEMENTAL FEATURES

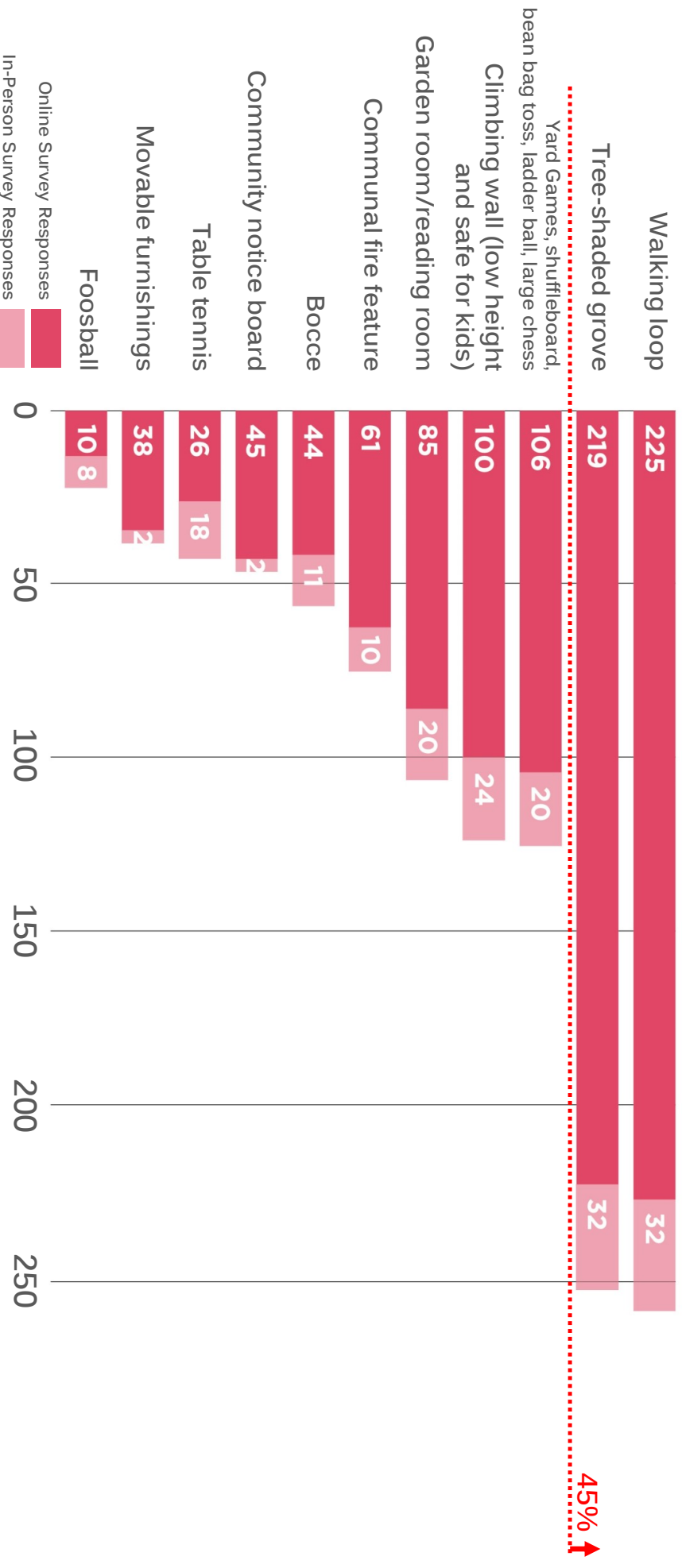
Below is a list of supplemental features that could be integrated into the park. Select up to 4 of your highest priorities.



SUPPLEMENTAL FEATURES

1138 VOTES

Below is a list of supplemental features that could be integrated into the park. Select up to 4 of your highest priorities.



PARK ACTIVITIES

Let us know which **activities and features** you would like the park to include by marking the circles next to your **4 highest priorities** in each category. We appreciate your input.



entitled program options

- multi-use lawn**
- maximize open flat lawn
- increase tree-shading at edges
- integrate topography at edges
- integrate active park elements with lawn
- children's play area**
- equipment-based play
- themed play area
- environmental play
- public art**
- modest sculptures at park corners
- larger single integrated sculpture
- interactive art element
- gardens within park**
- herb garden at outdoor BBQ areas
- horticultural display garden
- xeric display garden
- rain garden – environmental education



supplemental features

- garden room / reading room
- tree-shaded grove
- bocce
- shuffleboard
- table tennis
- foosball
- climbing wall (low and safe for kids)
- walking loop
- movable furnishings
- communal fire feature
- community notice board
- write-in _____
- write-in _____

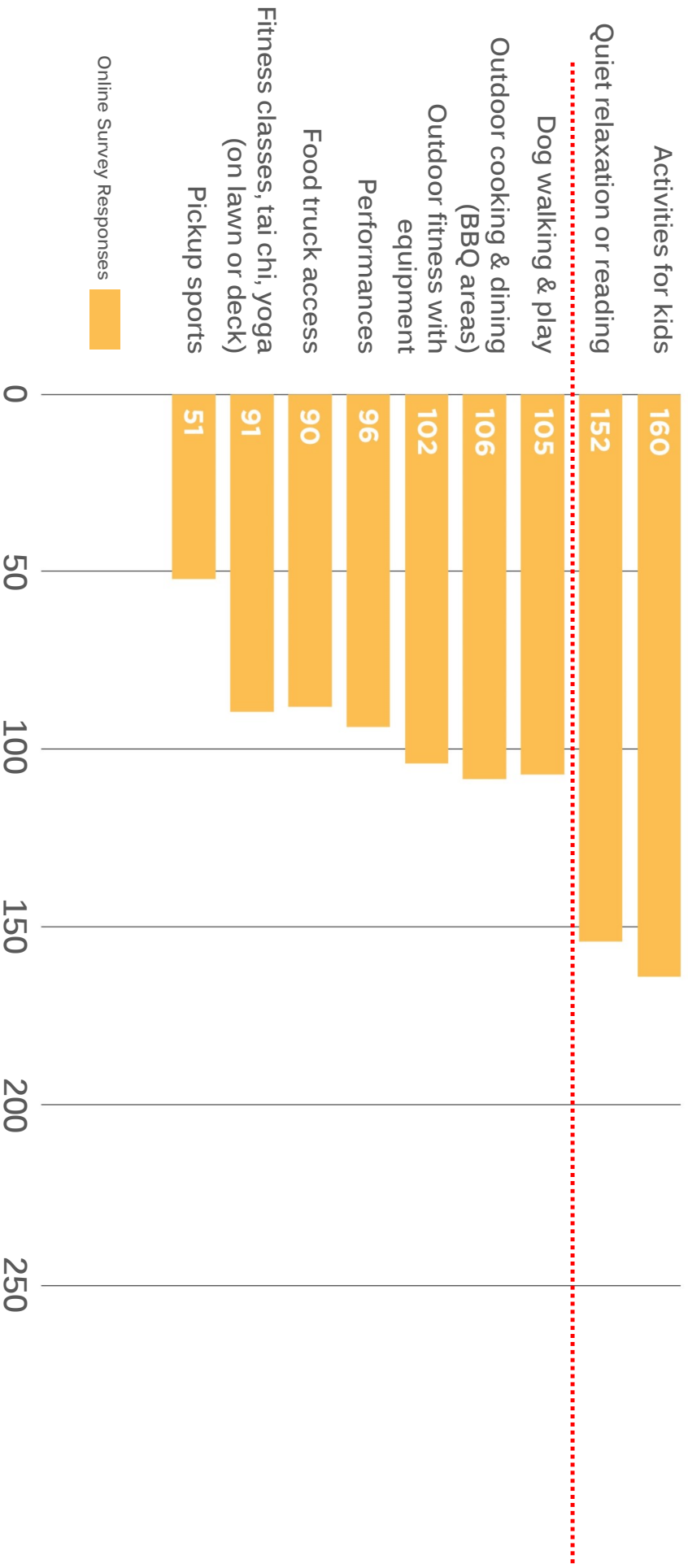


park activities

- quite relaxation or reading
- pickup sports
- fitness classes, tai chi, yoga (on lawn or deck)
- outdoor fitness with equipment
- performances
- food truck access
- outdoor cooking & dining (BBQ areas)
- dog walking & play
- activities for kids
- write-in _____
- write-in _____

PARK ACTIVITIES

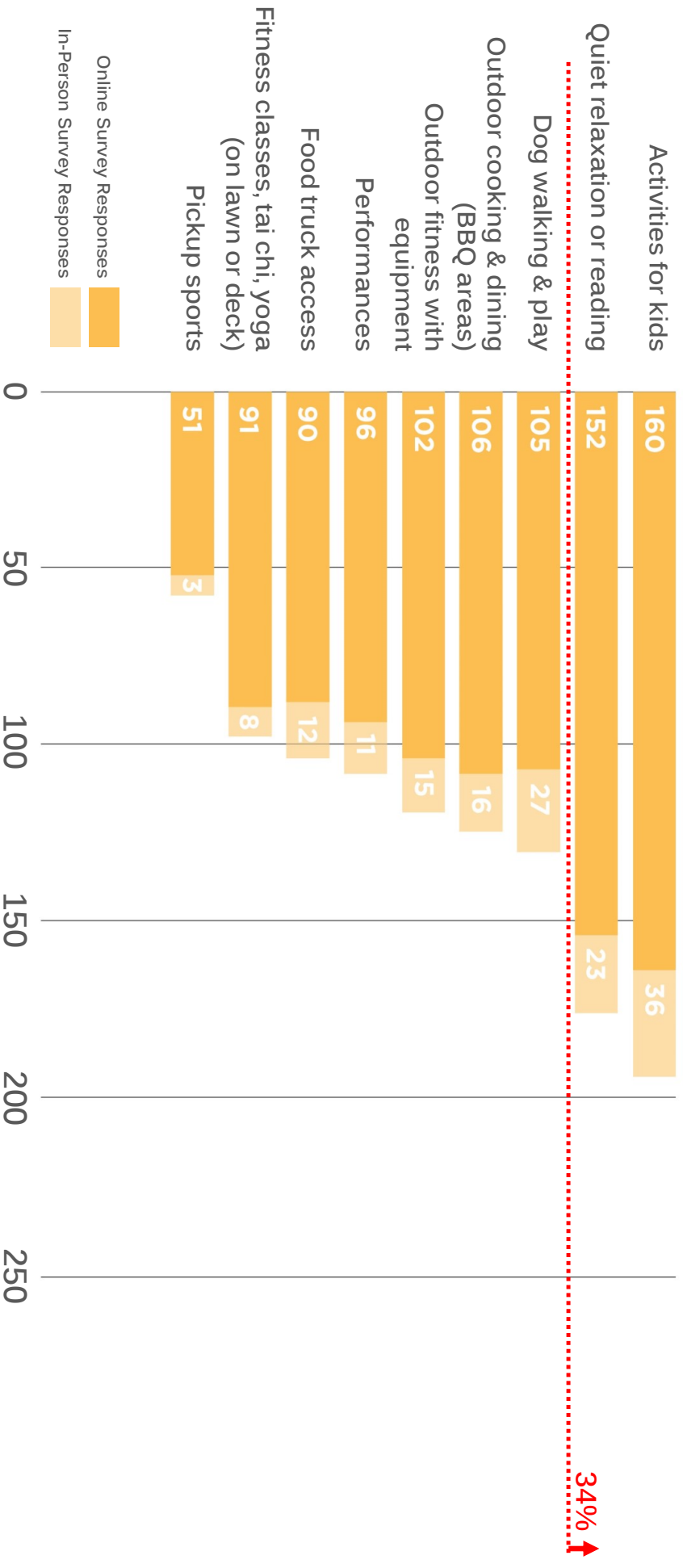
What are your top park activity priorities?
Select up to 4 of your highest priorities.



PARK ACTIVITIES

1104 VOTES

What are your top park activity priorities?
Select up to 4 of your highest priorities.



FORMAL vs. INFORMAL ORGANIZATION

FORMAL / RECTILINEAR ORGANIZATION

Example: Gateway Crossings Park 2019 Plan

2 Acres



47% PREFERRED

FORMAL

RECTILINEAR

SYMMETRICAL

AXIAL

GRIDED

PERIPHERAL CIRCULATION

USES COMPARTMENTALIZED

INFORMAL / ORGANIC ORGANIZATION

Example: Elizabeth Caruthers Park

2 Acres



53% PREFERRED

INFORMAL

CURVILINEAR

BALANCED ASYMMETRY

NON-AXIAL

ACTIVE / FLOWING

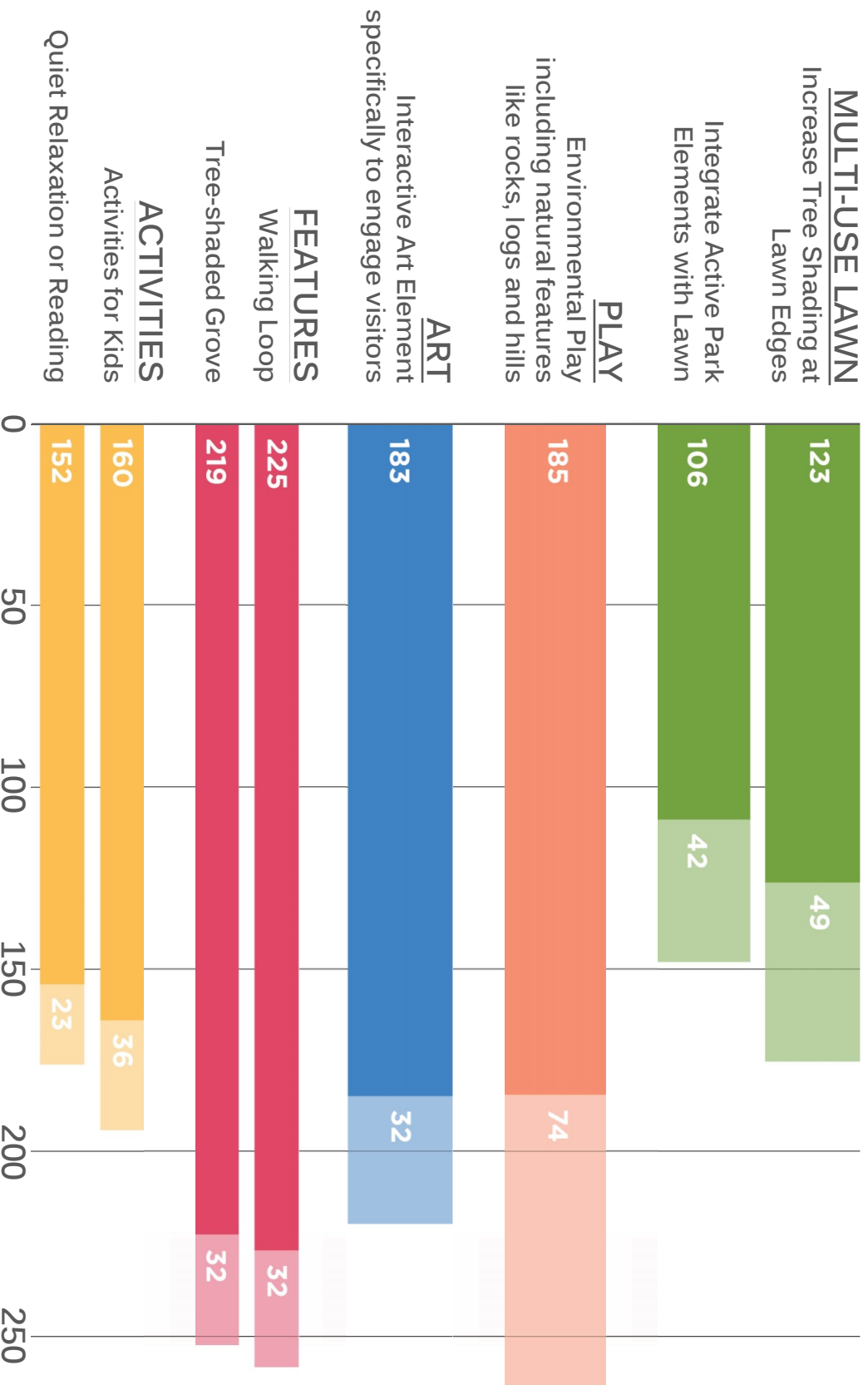
INTERNAL CIRCULATION

MULTI-USE SPACES

COMMUNITY PRIORITIES SUMMARY

COMMUNITY PRIORITIES

+/- 400 RESPONSES

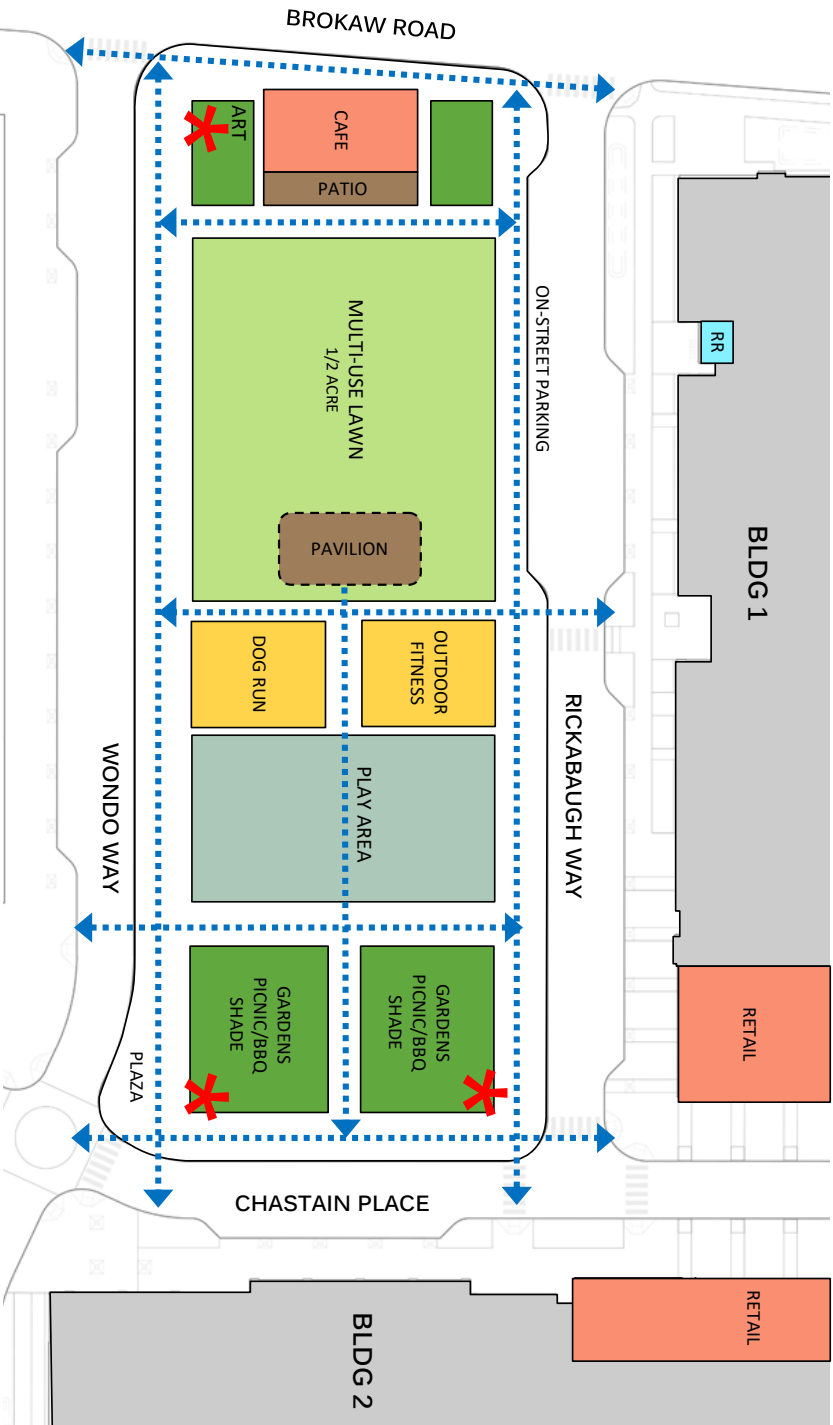


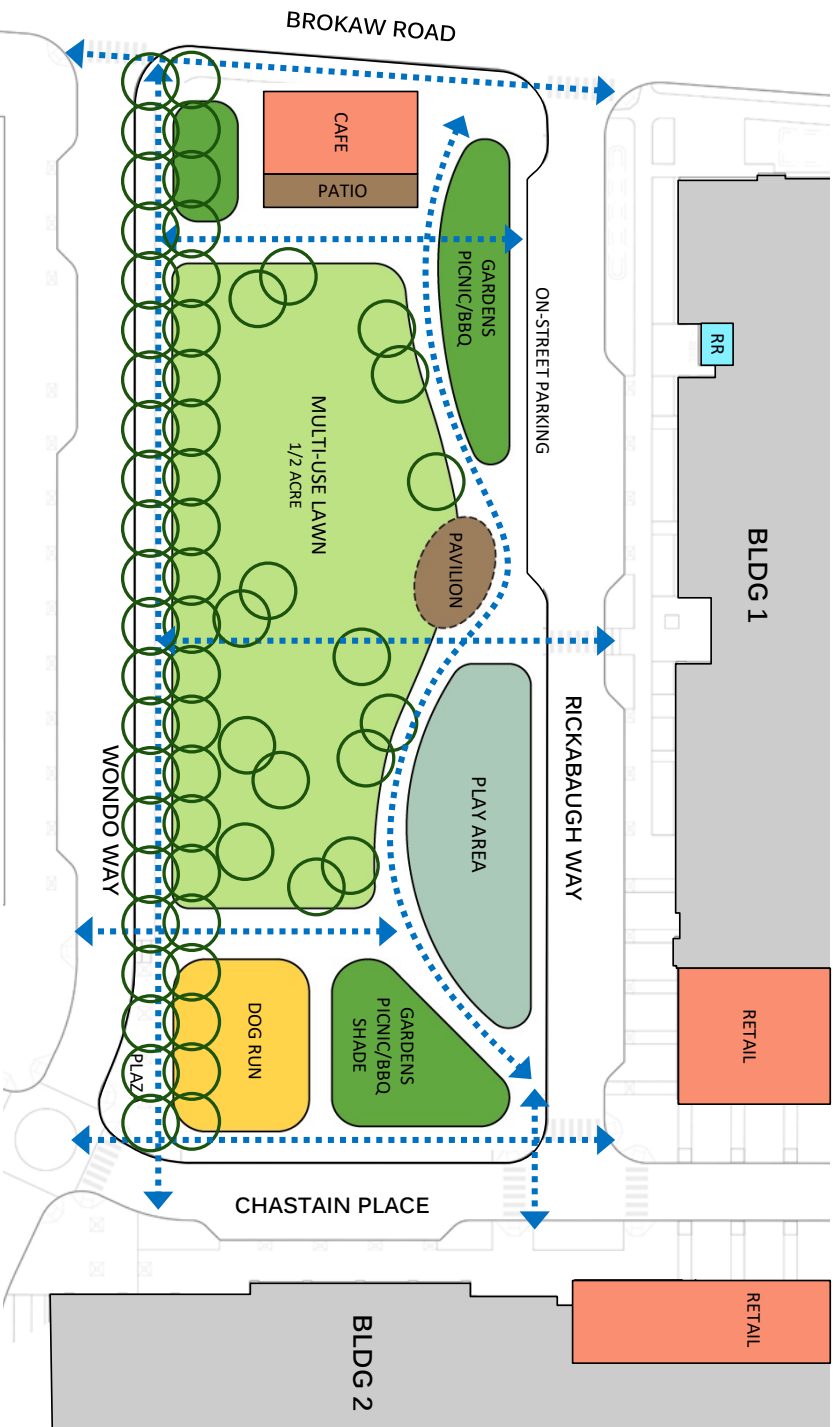
PROGRAM DIAGRAMS:

2 OPTIONS

PHASE 2

2019 CONCEPTUAL PROGRAM





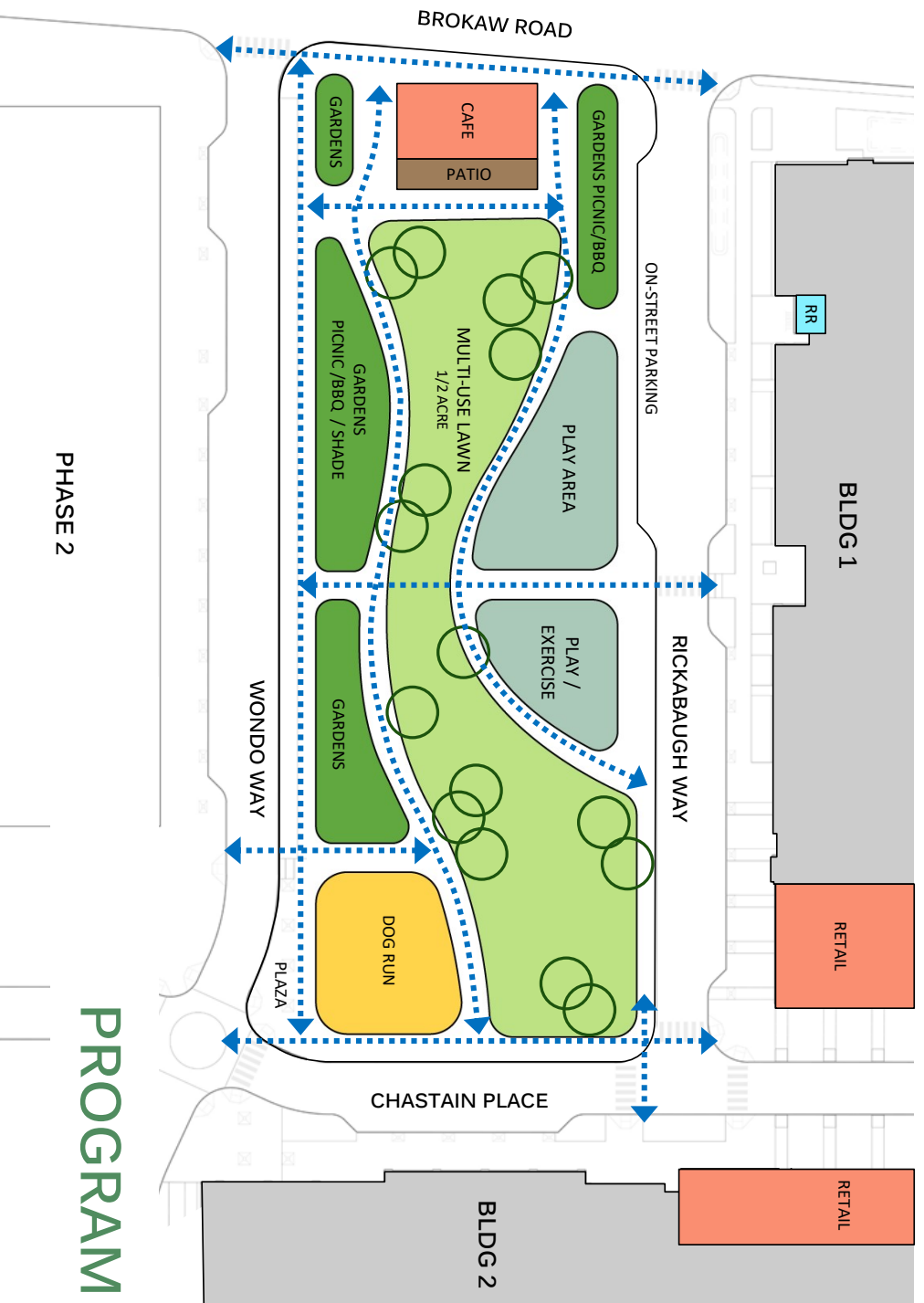
PHASE 2

PROGRAM OPTION 1



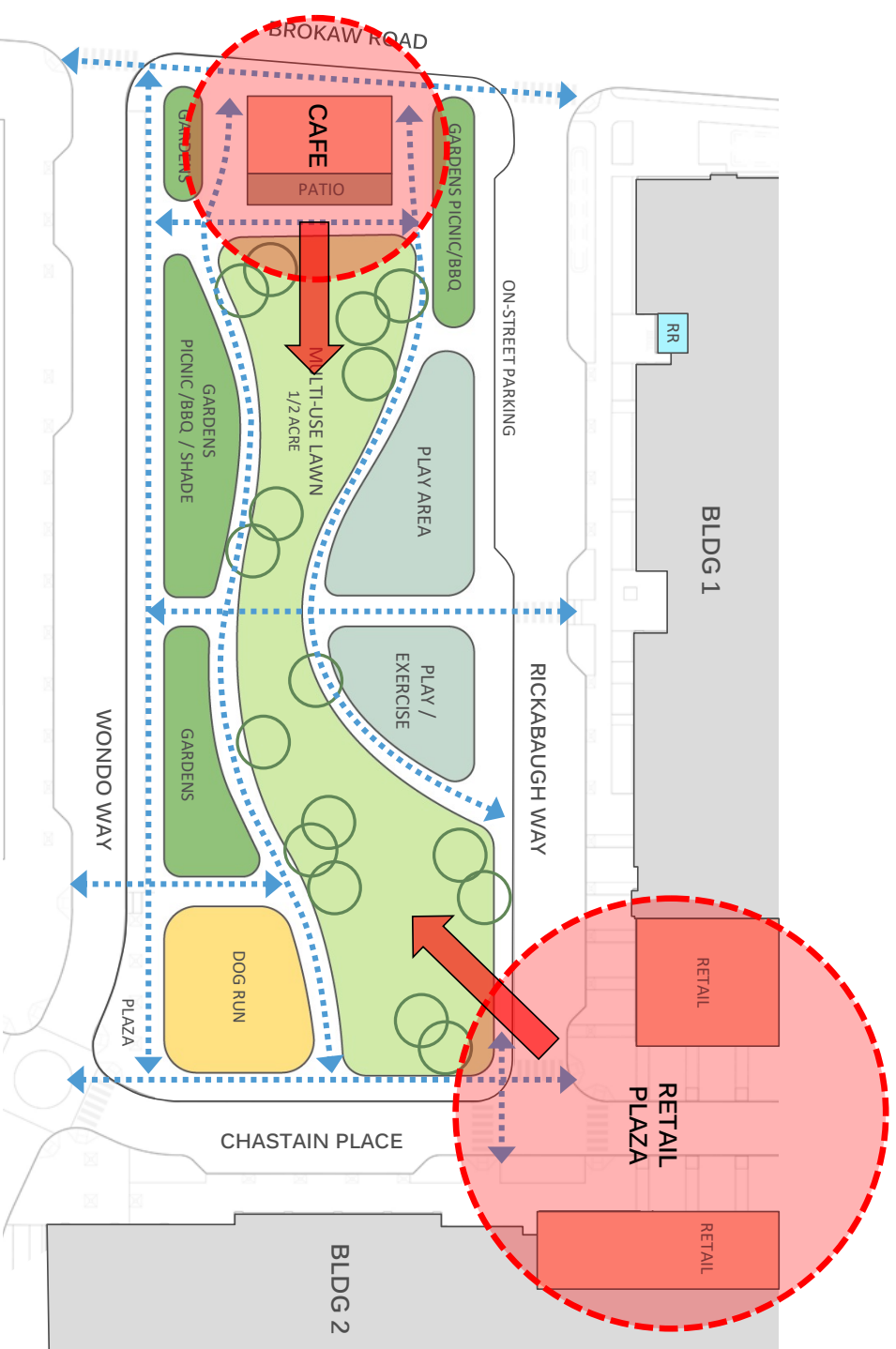
PHASE 2

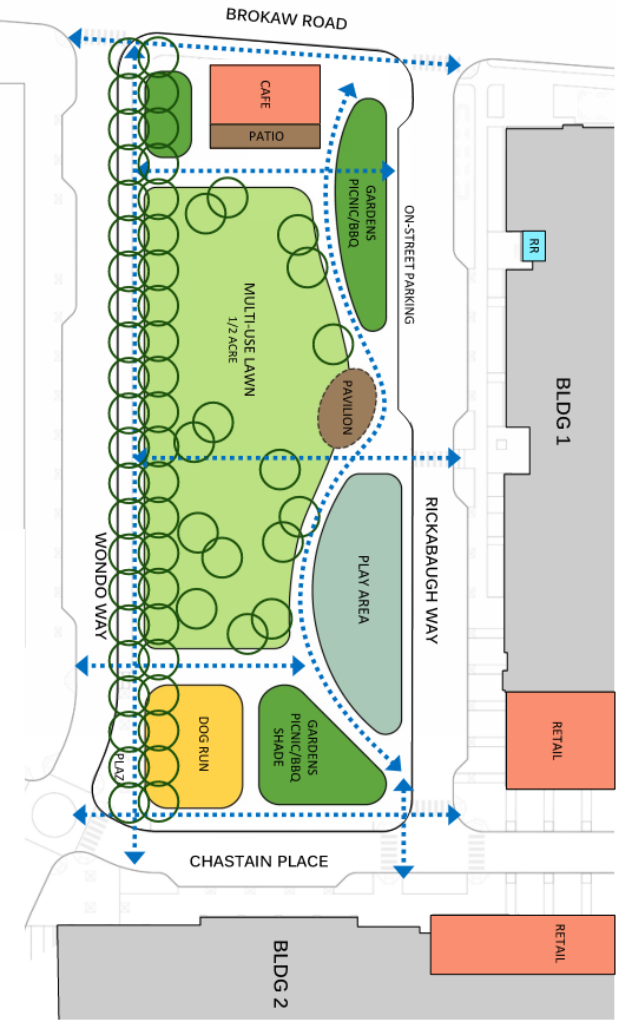
PROGRAM OPTION 2



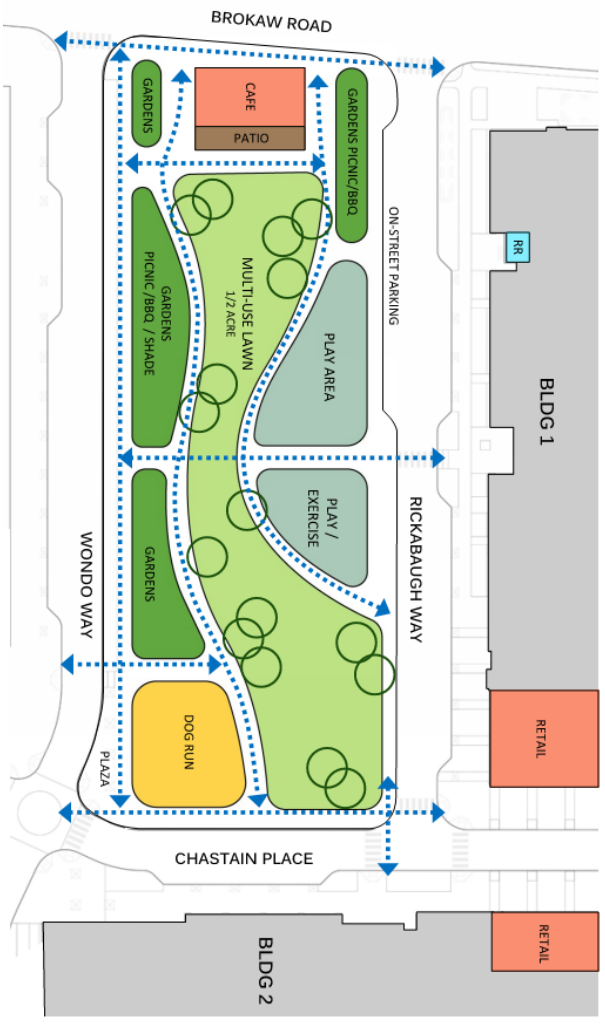
PHASE 2

PROGRAM OPTION 2





PROGRAM DIAGRAM
OPTION 1



PROGRAM DIAGRAM
OPTION 2



THANK YOU