



# **Parks & Recreation Commission Meeting**

**23-849. Item #2. Initiate the Formal  
Community Input Process on the  
Proposed Schematic Design of a  
New Public Neighborhood Park at  
2200 Calle De Luna (Holland)**

**August 15, 2023**



# Open Space Network

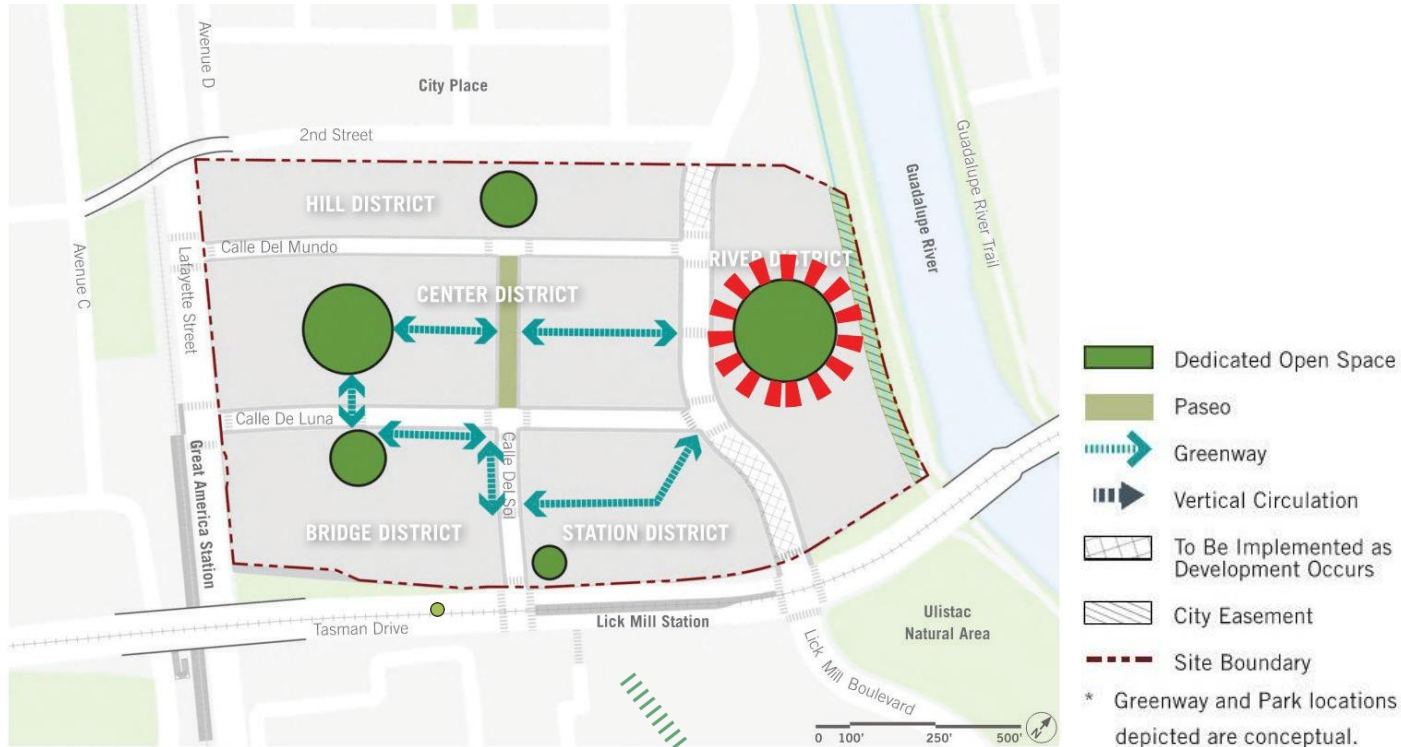


Figure 05-1-1 Open Space Locations



# Site Overview







# Local Inspiration





# Program Elements










- Public Park (TEFA) = 44,649 sf (1.03 a)
  1. **Dog Park (min. size of 3,000 sf)**
    - Off-Leash Dog Area = 4,060 sf
  2. **Landscaped and Furnished, Park-like Quiet Area**
    - Nature Discovery Garden = 4,411 sf
  3. **Game Area**
    - Riverside Pier = 1,527 sf
  4. **Children's Play Apparatus Area**
    - Children's Play Garden = 13,489 sf





# Circulation

## • Legend

-  Public Sidewalk
-  Public Bike Path
-  Main Park Pathway (ADA Accessible)
-  Garden Path (ADA Accessible)
-  Future Path Extension to South
-  Steppingstones & Wood Logs
-  Point of Connection
-  Greenway Access Point
-  Public Restrooms







# Illustrative Plan

- Legend

1. Riverside Park Trail
2. Park Entrance North (Grass Paver)
3. Residence Access – North
4. Off-Leash Dog Area
5. Bio-Retention Zone
6. Sand Pit
7. Children's Play Garden
8. Nature Discovery Garden
9. Riverside Pier
10. Public Restrooms
11. Planted Mound (Native Planting)





# Off-Leash Dog Area

- Area Calculations
  - Total Surface Area = 4,060 sf
- Legend
  1. Double Gate Entrance
  2. DG Paved Area
  3. Tree Planted Mound
  4. Tree Logs
  5. Seating for Dog Owners
  6. Planted Hedge (3-4') & Fence (4'min.)
  7. Garden Path











# Nature Discovery Garden

- Area Calculations
  - Total Surface Area = 4,411 sf
- Legend
  1. Garden Nook
  2. Steppingstones at Bio-Swale
  3. Wood Stumps at Planted Mound
  4. Rain Garden Observation (Gravel)
  5. Native Planted Bio-Swale
  6. Creek Bed (assortment of Materials)
  7. Native Planted Riverine Garden





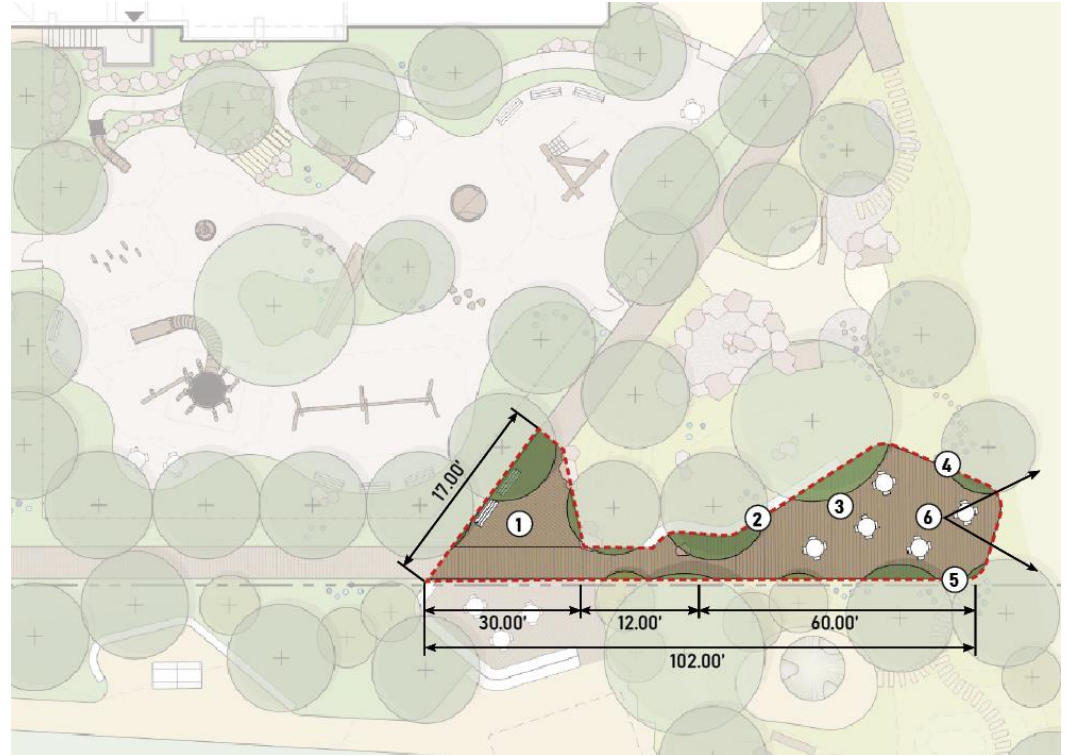






# Riverside Pier

- Area Calculations
  - Total Surface Area = 1,527 sf
- Legend
  1. Boardwalk Plaza w/ Seating Benches
  2. Community Bench at Planted Mound
  3. Group Tables for Board Games
  4. Wood Stumps at Mound
  5. Steppingstones to Adjacent Park
  6. View to Riverine Corridor & Dam







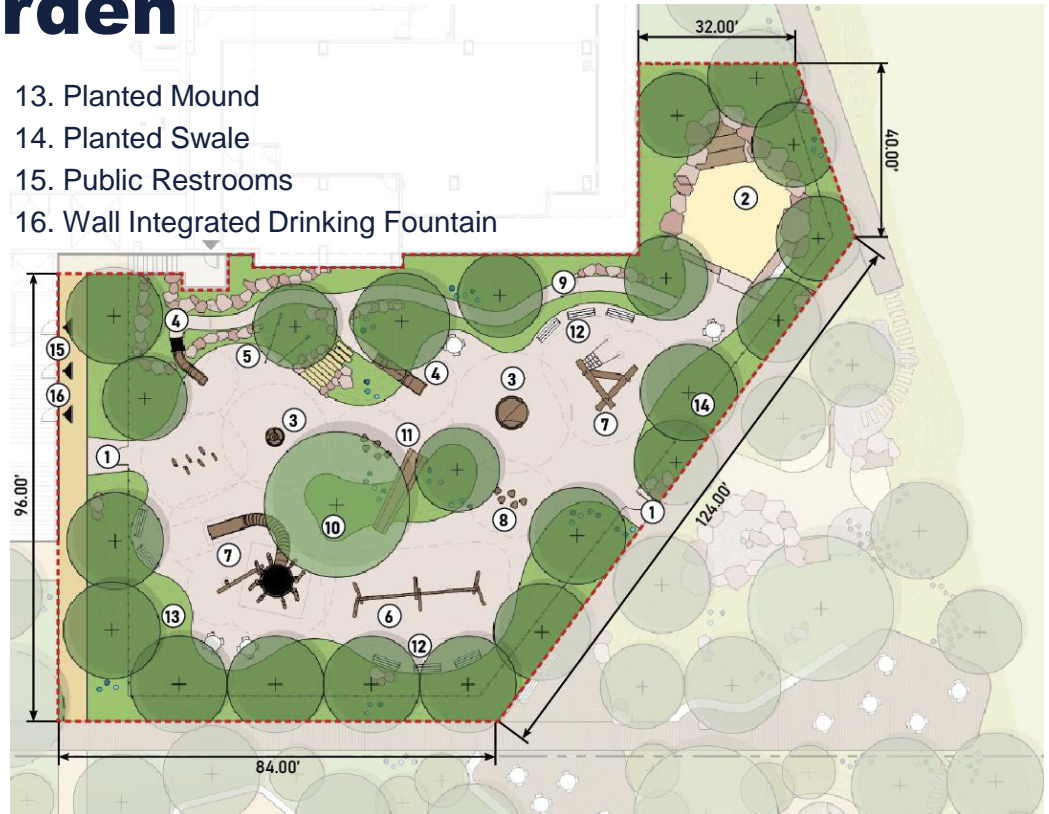


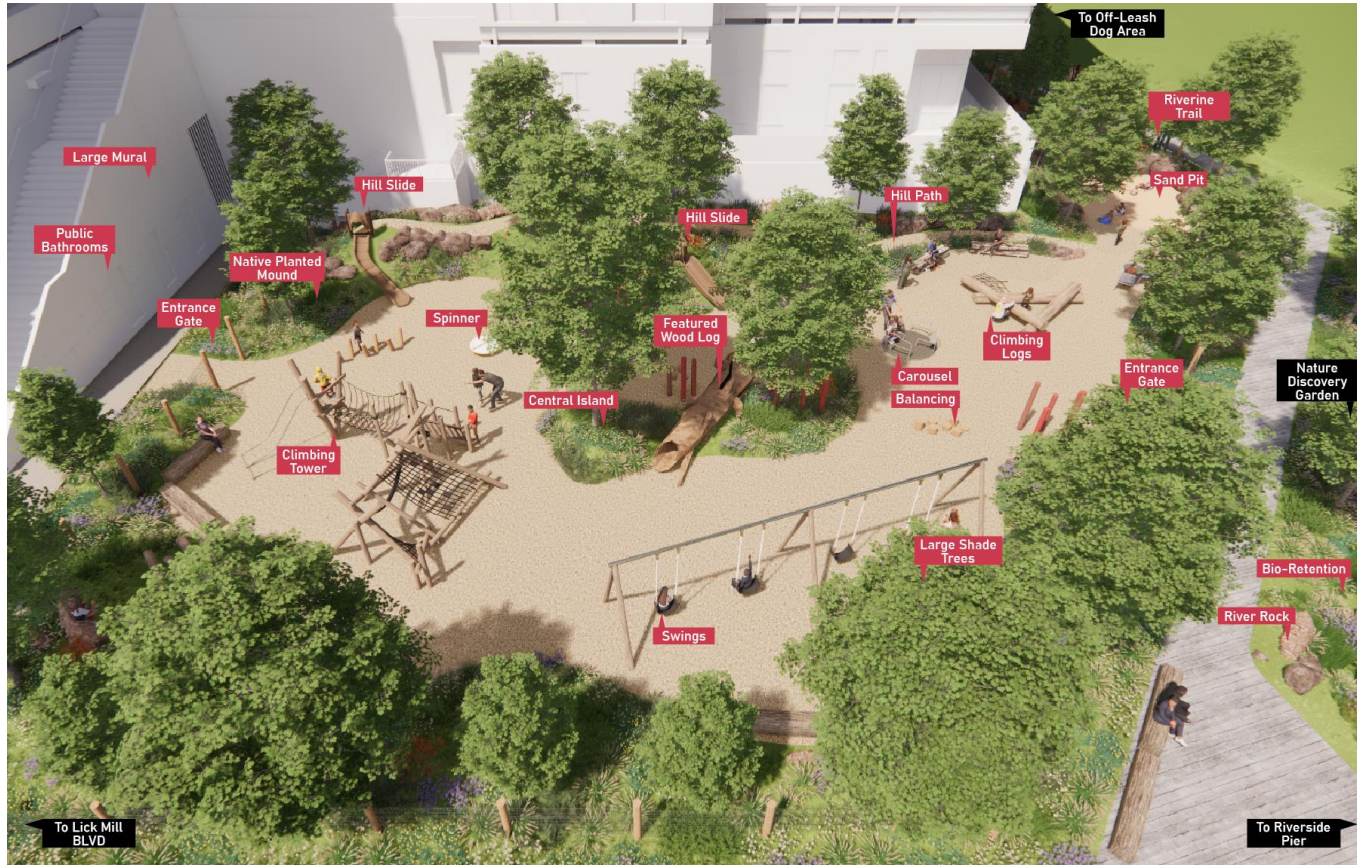


# Children's Play Garden

- Area Calculations
  - Total Surface Area = 13,489 sf
- Legend
  1. Entrance Gate
  2. San Pit & Seating Decks
  3. Universal Carousel
  4. Mound Integrated Slide
  5. Climbing Ropes
  6. Swings
  7. Climbing Tower
  8. Balancing Garden
  9. ADA Access Path to Slides
  10. Central Mound
  11. Featured Wood Log
  12. Seating

13. Planted Mound
14. Planted Swale
15. Public Restrooms
16. Wall Integrated Drinking Fountain















# Supplemental Slides



# Playground Matrix

Elements of Play	Ages 2-5	Level of Play	* Proposed Capacity	Ages 6-12	Level of Play	* Proposed Capacity	Total Capacity
Balancing	3	B=1 I=1 A=1	10	1	B=1 I=1 A=1	3	13
Sliding	1	B= I= A=	2	2	B=1 I= A=1	7	9
Brachiating	2	B= I=1 A=1	11	2	B=1 I=1 A=	11	11
Spinning	1	B= I=1 A=	8	1	B= I=1 A=	8	16
Climbing	1	B= I=1 A=	6	1	B= I=1 A=	30	36
Swinging	2	B=1 I=1 A=	2	2	B= I=2 A=	2	4
Running/Free Play	1	N/A	15	1	N/A	5	20
<b>Total:</b>	<b>11</b>		<b>54</b>	<b>10</b>		<b>66</b>	<b>109</b>
Inclusive Play Elements	11			10			



Level of Play:  
B: Beginner I: Intermediate A: Advanced

**Note:** This is an estimate



# Age Appropriate Playground Program



-  Age Group: 2-5 Years Old
-  Age Group: 6-12 Years Old



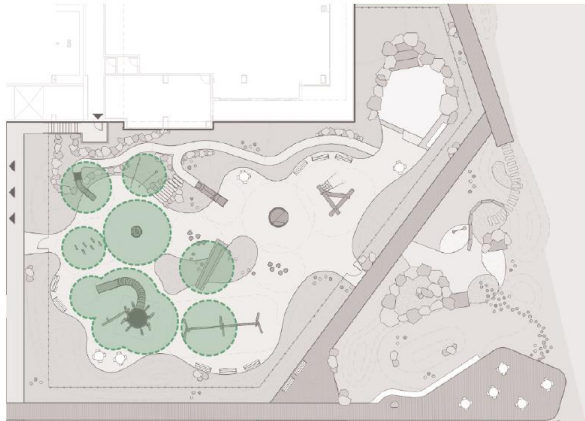
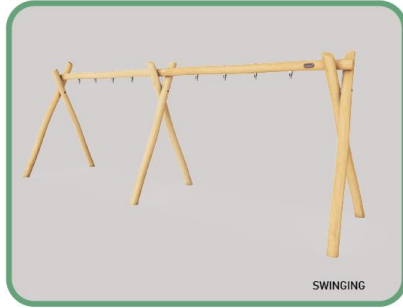


# Age Group: 2-5 Years Old









# Age Group: 6-12 Years Old

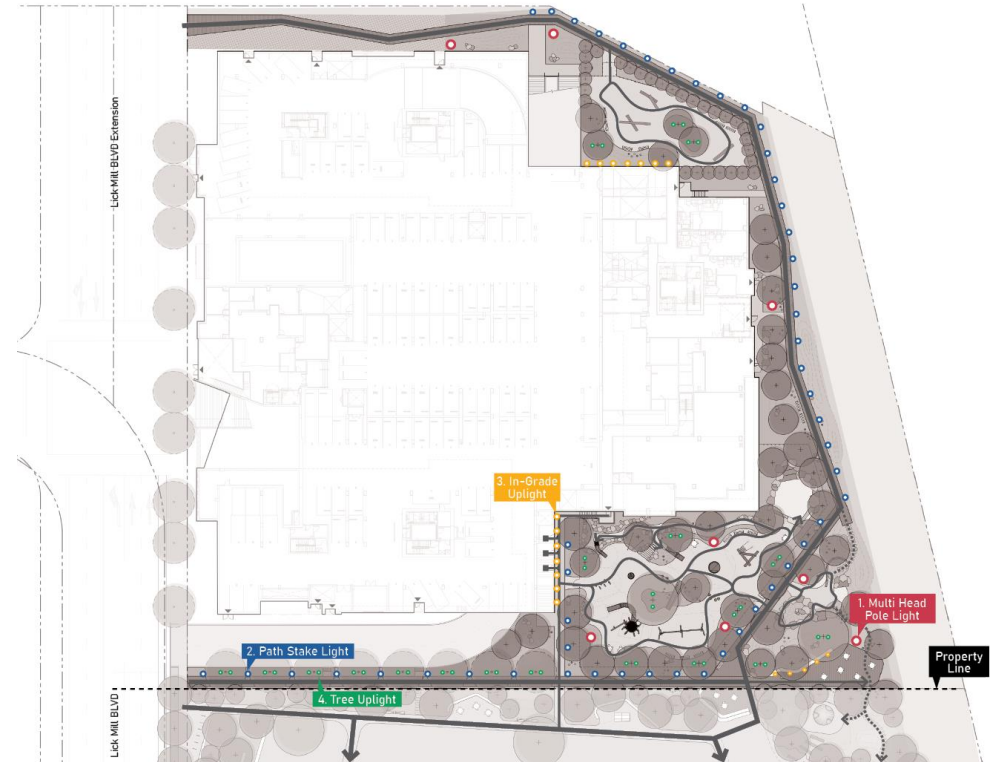




# Preliminary Lighting

- Lighting Typology

-  Multi-Head Pole Light
-  Path Stake Light
-  In-Garden Upplight (Murals)
-  Tree Upplight







# Planting Palette

## TREES



River Birch - *Betula nigra*



Coast Live Oak - *Quercus agrifolia*



Box Elder - *Acer negundo*



Skyline Honey Locust - *Gleditsia triacanthos var. inermis 'Skyline'*



Marina Madrone - *Arbutus Marina*

## SHRUBS + PERENNIALS



Dogwood - *Cornus sericea*



Smoke Tree - *Cotinus coggygria*



Matilda Poppy - *Romneya coulteri*



White Sage - *Salvia apiana*



St. Catherine's Lace - *Eriogonum giganteum*



Black Sage - *Salvia mellifera*



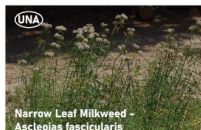
Mugwort - *Artemisia ludoviciana*



Golden Currant - *Ribes aurum*



English Laurel - *Prunus laurocerasus*



Narrow Leaf Milkweed - *Asclepias fascicularis*



Hedge Nettle - *Stachys ajacoides*



Common Yarrow - *Achillea millefolium*



Golden Yarrow - *Eriogonum confertiflorum*



Chilobrylia Coneflower - *Rudbeckia californica*



Daguerria - *Iris wrightiana*



Wild Ginger - *Asarum caudatum*



Sea-side Daisy - *Erigeron glaucus Wayne Roderick*

## SEDGES/GRASSES



Deer Grass - *Muhlenbergia rigens*



Ruby Muhly Grass - *Muhlenbergia reverchonii*



Panicum Sedge - *Panicum tumulicola*



Golden Dew Tufted Hairgrass - *Deschampsia cespitosa 'Goldtau'*



Common Rush - *Juncus patens*