

SHEET A.1

4503 CHEENEY STREET

IN SANTA CLARA, CA

ARCHITECTURAL REVIEW - SUBMITTAL 1

DAHLIN GROUP ARCHITECTURE | PLANNING | INTERIORS

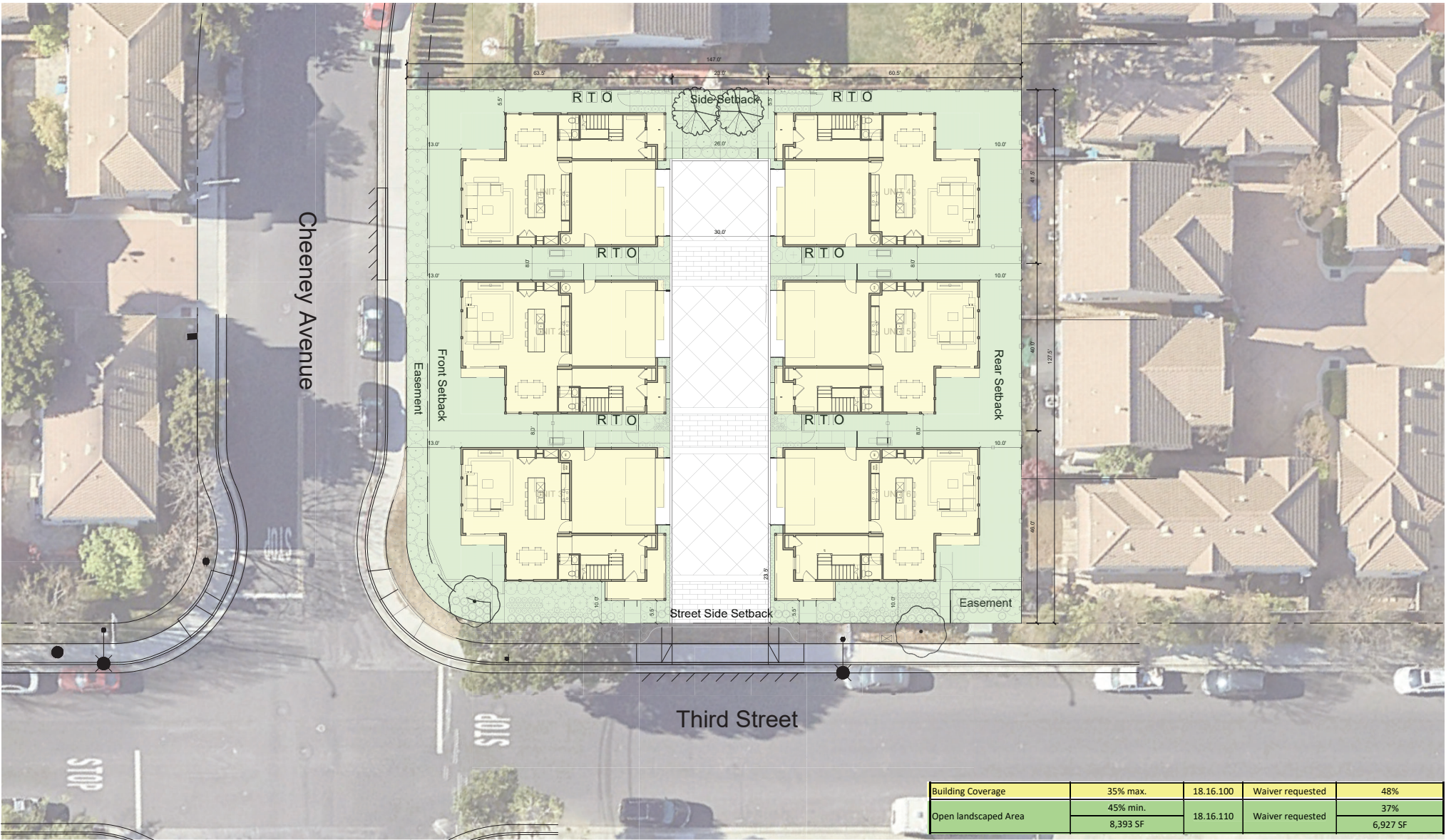
EXISTING SITE PHOTOS

WWW.DAHLINGROUP.COM

PROJECT NO. 1005.012 | JANUARY 16, 2024

VOP

DAHLIN

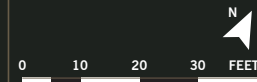


Building Coverage	35% max.	18.16.100	Waiver requested	48%
	45% min.			37%
Open landscaped Area	8,393 SF	18.16.110	Waiver requested	6,927 SF

SHEET A.2

4503 CHEENEY STREET
 IN SANTA CLARA, CA
 ARCHITECTURAL REVIEW - SUBMITTAL 1

ARCHITECTURAL SITE PLAN



DAHLIN GROUP ARCHITECTURE | PLANNING | INTERIORS

WWW.DAHLINGROUP.COM

PROJECT NO. 1005.012 | JANUARY 16, 2024



THIRD STREET ELEVATION



CHEENEY STREET ELEVATION

4503 CHEENEY STREET

IN SANTA CLARA, CA

ARCHITECTURAL REVIEW - SUBMITTAL 1

DAHLIN GROUP ARCHITECTURE | PLANNING | INTERIORS

STREETSCAPE ELEVATIONS

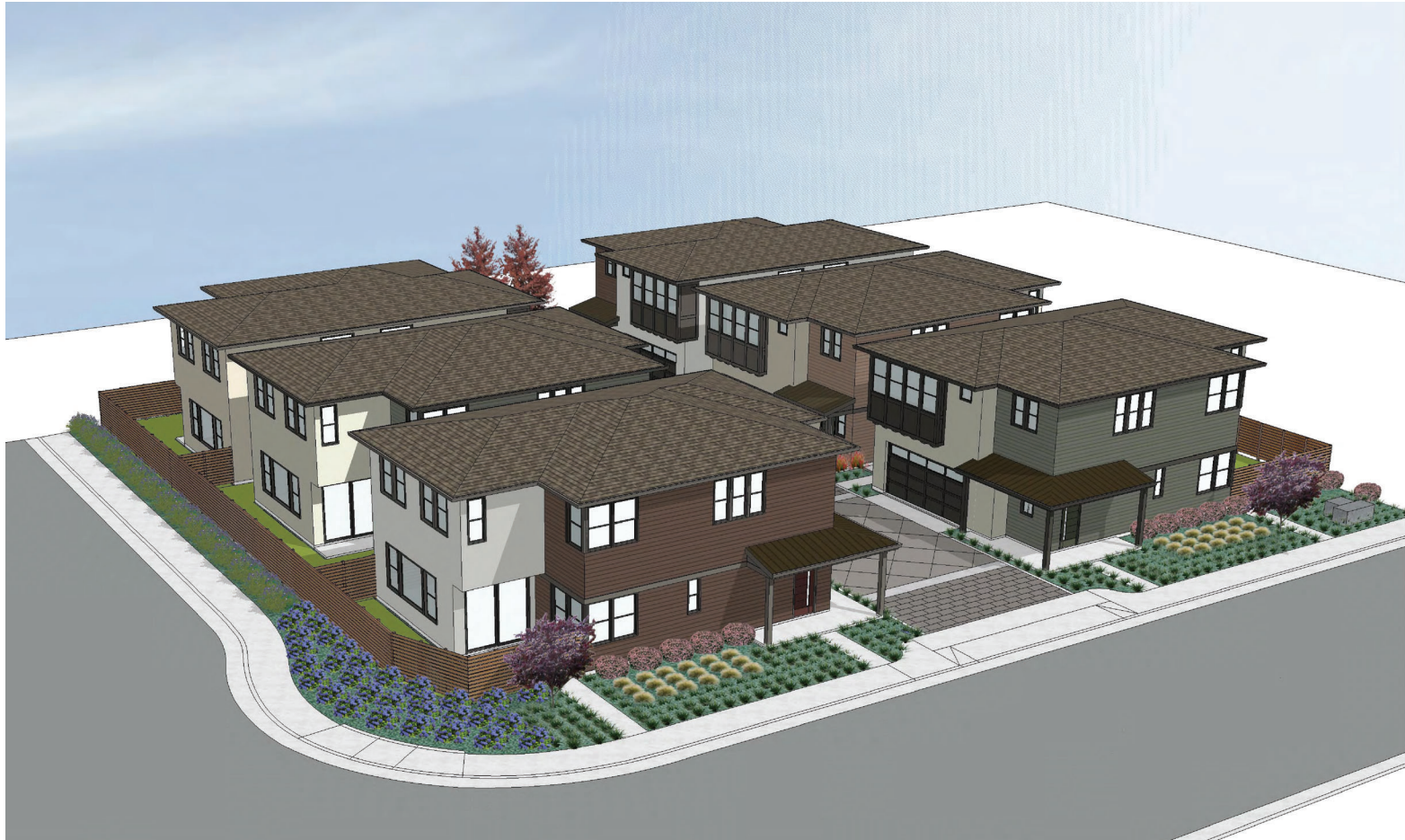
WWW.DAHLINGROUP.COM

PROJECT NO. 1005.012 | JANUARY 16, 2024

SHEET A.3

VOP

DAHLIN



PERSPECTIVE - CORNER VIEW

4503 CHEENEY STREET

IN SANTA CLARA, CA

ARCHITECTURAL REVIEW - SUBMITTAL 1

DAHLIN GROUP ARCHITECTURE | PLANNING | INTERIORS

PERSPECTIVE

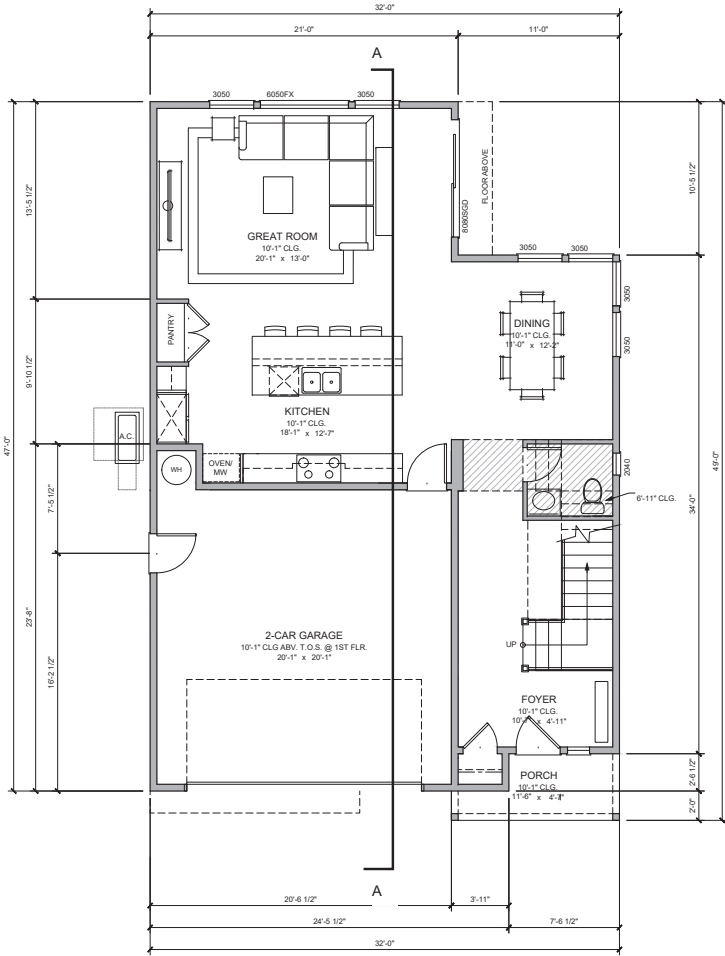
WWW.DAHLINGROUP.COM

PROJECT NO. 1005.012 | JANUARY 16, 2024

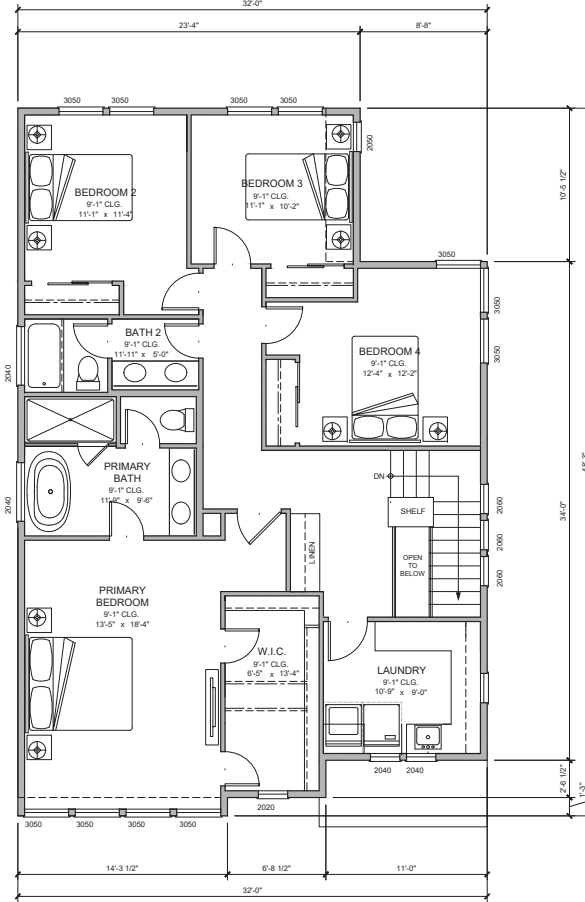
SHEET A.4

VOP

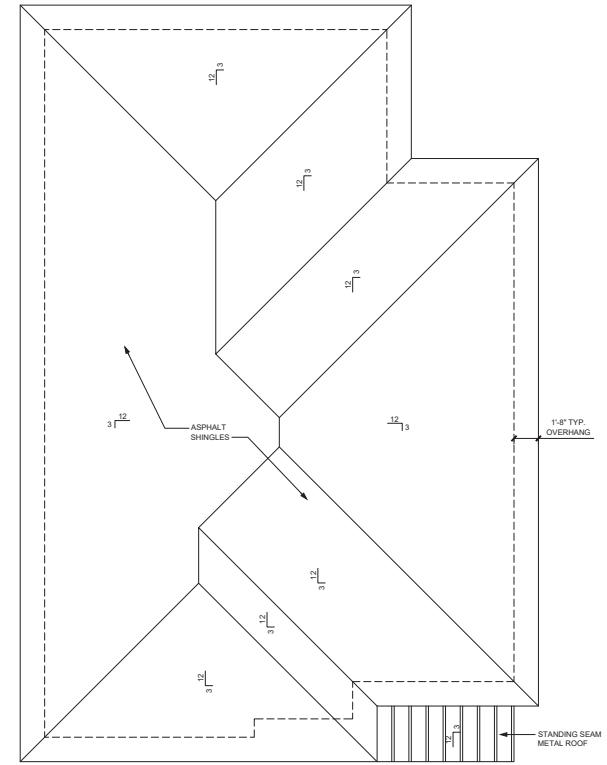
DAHLIN



PLAN 1 - MAIN FLOOR PLAN
 LOTS 2, 3, 4, & 5



PLAN 1 - UPPER FLOOR PLAN



PLAN 1 - ROOF PLAN



SHEET A.5

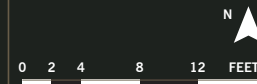
4503 CHEENEY STREET
 IN SANTA CLARA, CA

ARCHITECTURAL REVIEW - SUBMITTAL 1

DAHLIN GROUP ARCHITECTURE | PLANNING | INTERIORS

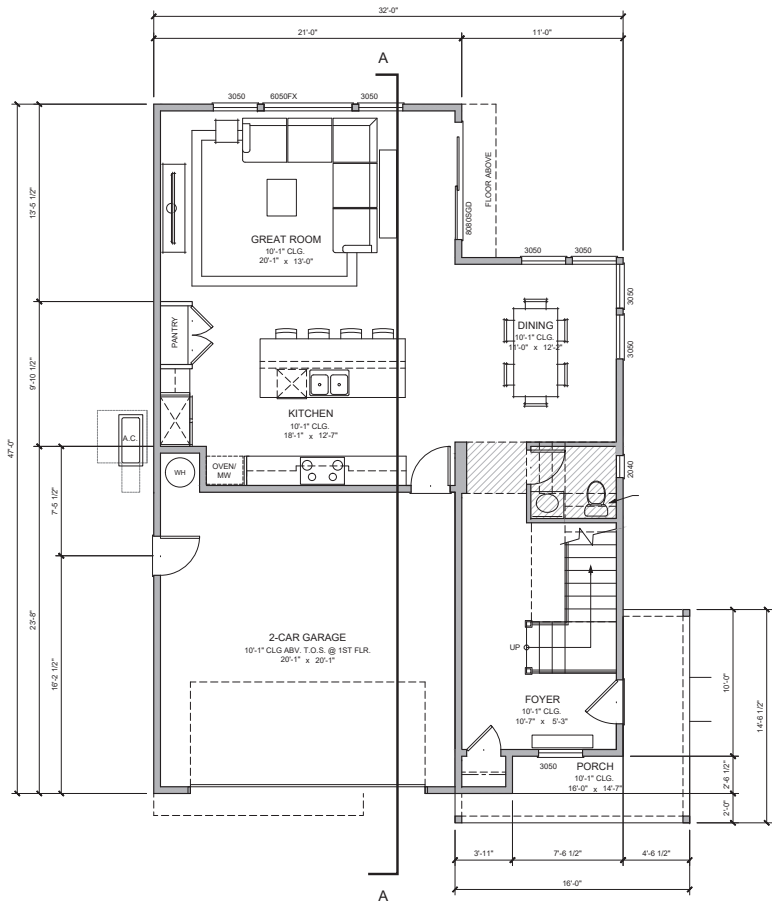
FLOOR PLANS
 UNIT 1

WWW.DAHLINGROUP.COM

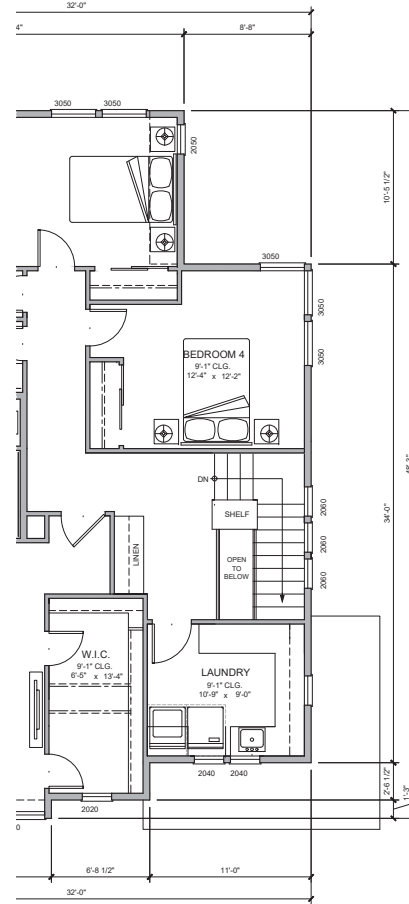


PROJECT NO. 1005.012 | JANUARY 16, 2024

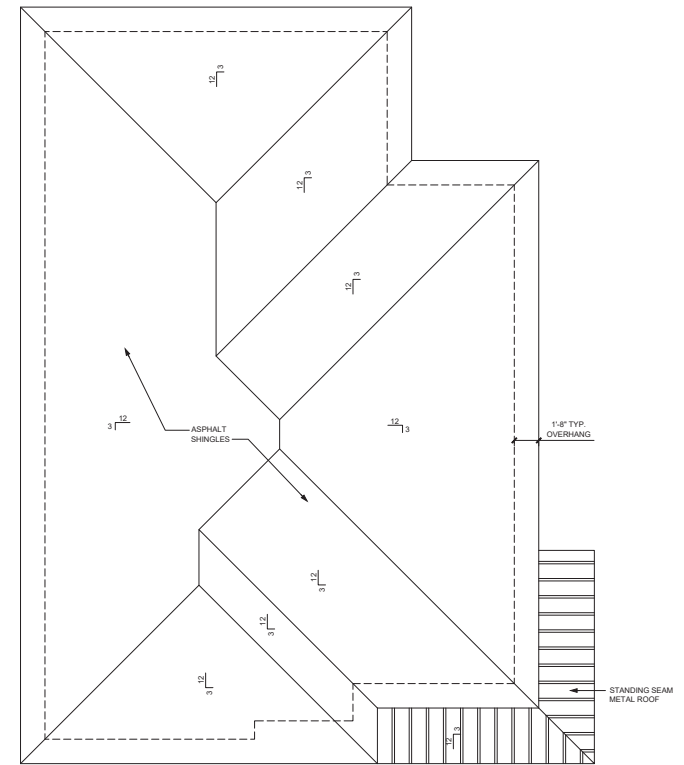




PLAN 1A - MAIN FLOOR PLAN
LOTS 1 & 6



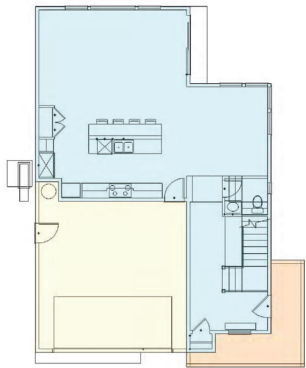
PLAN 1A - PARTIAL UPPER FLOOR PLAN



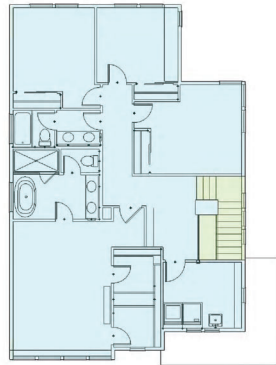
PLAN 1A - ROOF PLAN



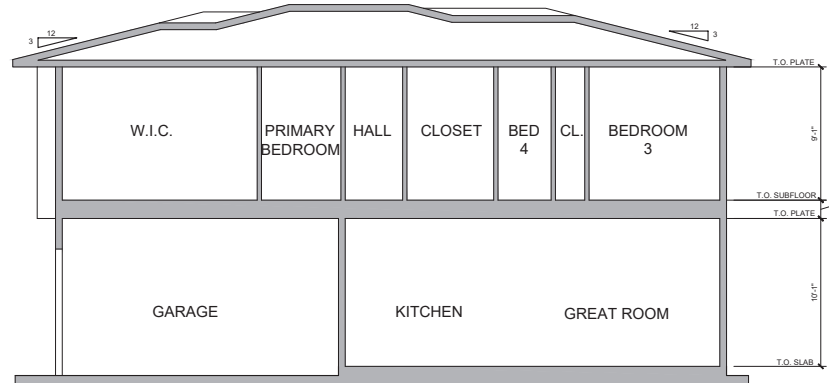
SITE KEY



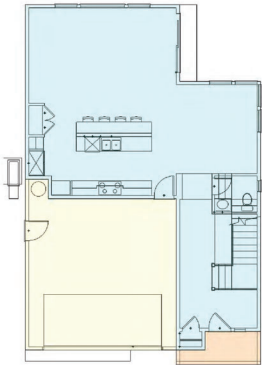
PLAN 1A



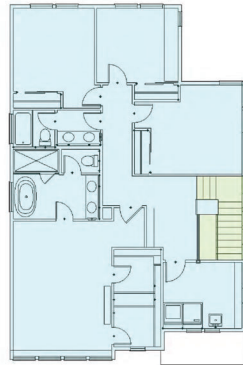
MAIN FLOOR LIVING AREA 939 SF
 UPPER FLOOR LIVING AREA 1,336 SF
TOTAL LIVING AREA 2,275 SF
 GARAGE AREA 430 SF
 PORCH AREA 108 SF
 UPPER LEVEL STAIR AREA 67 SF



BUILDING SECTION A-A

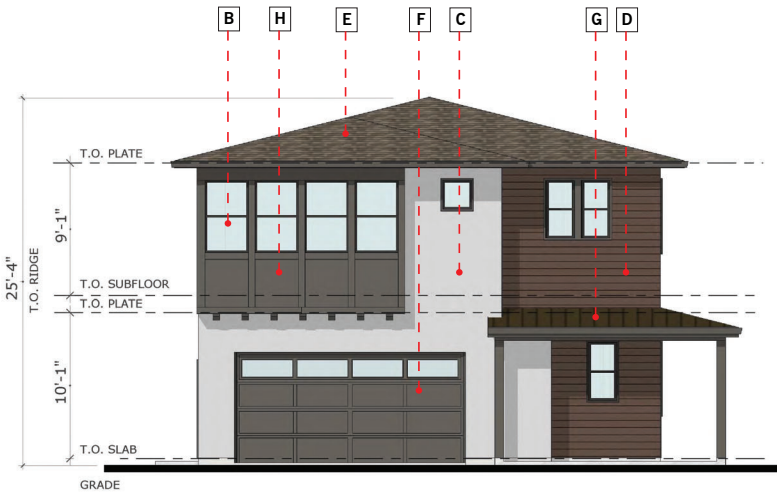


PLAN 1

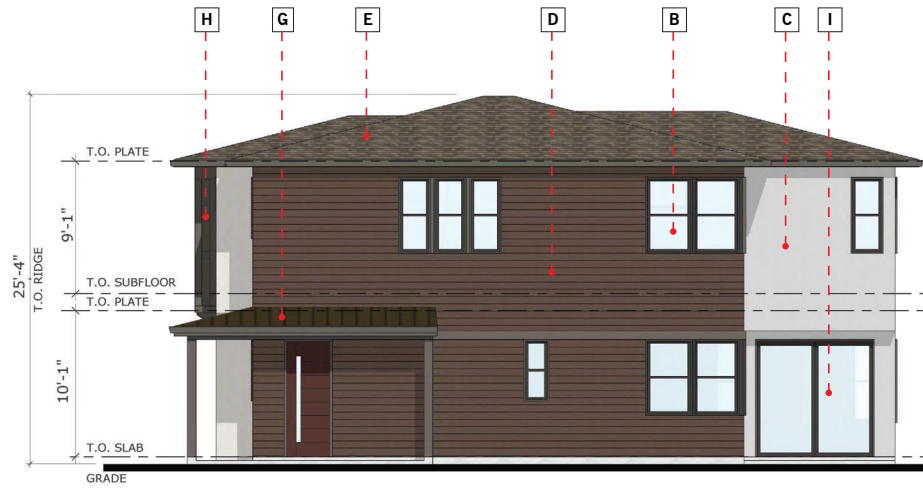


MAIN FLOOR LIVING AREA 939 SF
 UPPER FLOOR LIVING AREA 1,336 SF
TOTAL LIVING AREA 2,275 SF
 GARAGE AREA 430 SF
 PORCH AREA 42 SF
 UPPER LEVEL STAIR AREA 67 SF

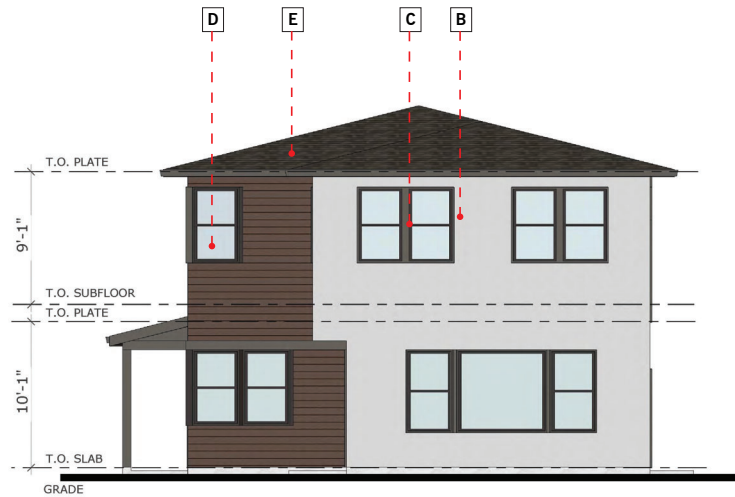
ARCHITECTURAL SUMMARY										
unit name	unit count	bedroom count	bathroom count	gross living area / unit	total gross living area	garage area	porch area	upper level stair area	construction area / unit	total construction area
Plan 1	4	4	2.5	2,275	9,100	430	42	67	2,772	11,088
Plan 1A	2	4	2.5	2,275	4,550	430	108	67	2,772	5,544
Total	6				13,650					16,632



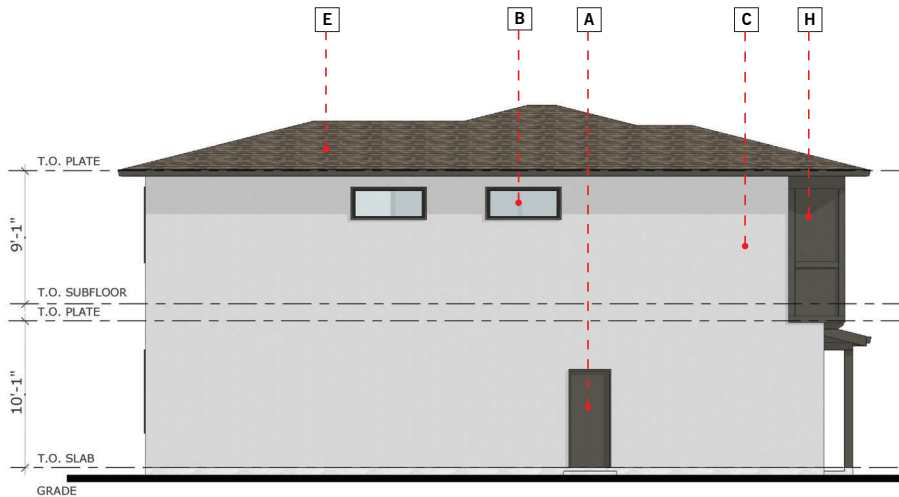
FRONT ELEVATION



RIGHT ELEVATION



REAR ELEVATION



LEFT ELEVATION

MATERIAL LIST

- A** WOOD DOOR
- B** VINYL WINDOWS
- C** STUCCO
- D** 8" HORIZ. LAP SIDING
- E** COMPOSITE SHINGLE ROOFING
- F** ALUMINUM GARAGE DOOR
- G** STANDING SEAM ROOFING
- H** PAINTED ACCENT PANEL
- I** SLIDING GLASS DOOR

4503 CHEENEY STREET

IN SANTA CLARA, CA

ARCHITECTURAL REVIEW - SUBMITTAL 1

DAHLIN GROUP ARCHITECTURE | PLANNING | INTERIORS

BUILDING ELEVATIONS

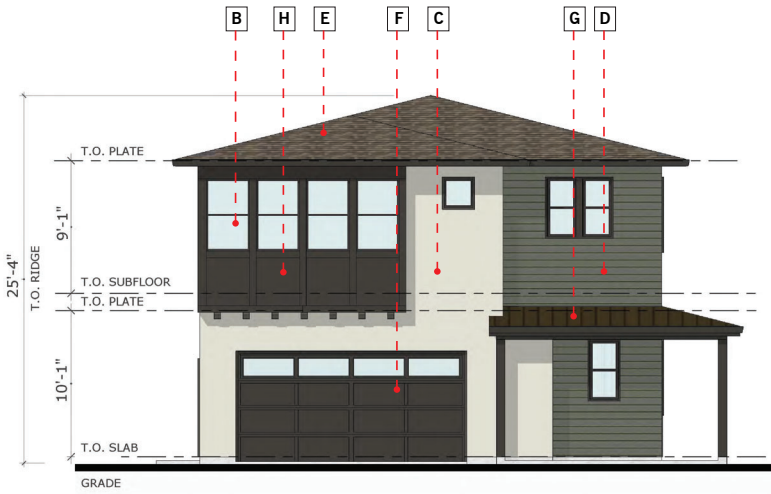
PLAN 1A / COLOR SCHEME A

WWW.DAHLINGROUP.COM

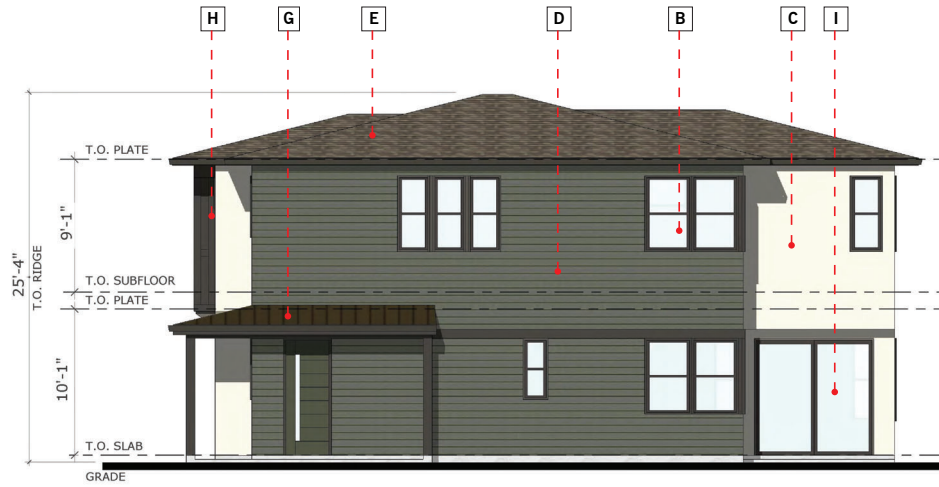
0 2 4 8 12 FEET

PROJECT NO. 1005.012 | JANUARY 16, 2024

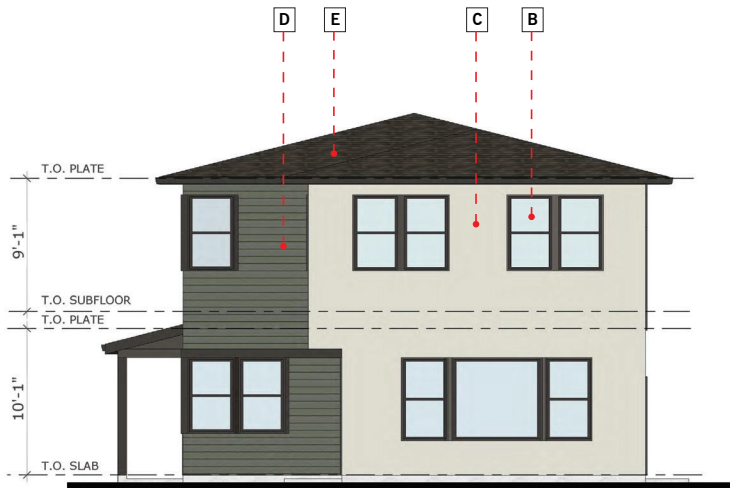




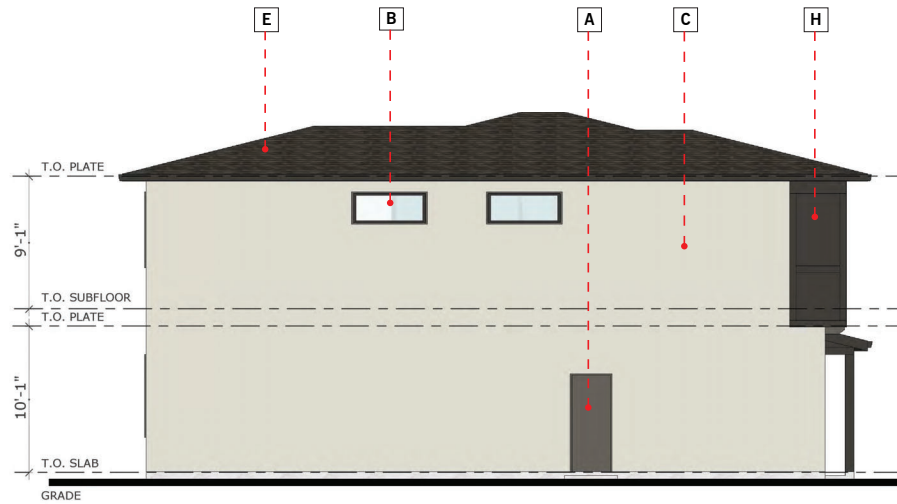
FRONT ELEVATION



RIGHT ELEVATION



REAR ELEVATION



LEFT ELEVATION

MATERIAL LIST

- A** WOOD DOOR
- B** VINYL WINDOWS
- C** STUCCO
- D** 8" HORIZ. LAP SIDING
- E** COMPOSITE SHINGLE ROOFING
- F** ALUMINUM GARAGE DOOR
- G** STANDING SEAM ROOFING
- H** PAINTED ACCENT PANEL
- I** SLIDING GLASS DOOR

4503 CHEENEY STREET

IN SANTA CLARA, CA

ARCHITECTURAL REVIEW - SUBMITTAL 1

DAHLIN GROUP ARCHITECTURE | PLANNING | INTERIORS

BUILDING ELEVATIONS

PLAN 1A / COLOR SCHEME B

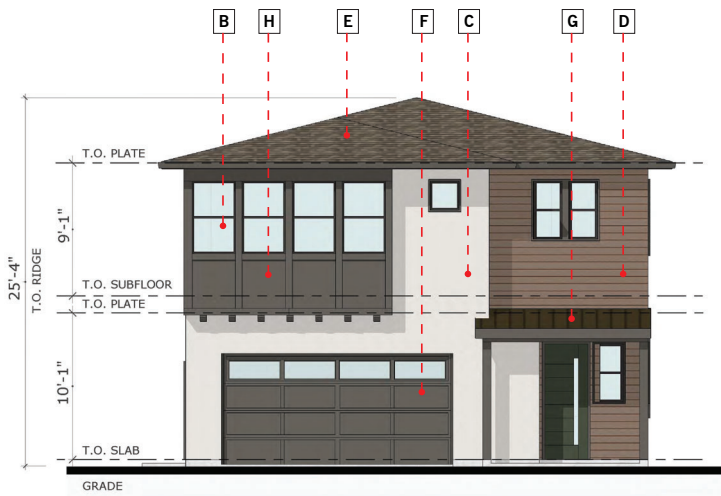
WWW.DAHLINGROUP.COM



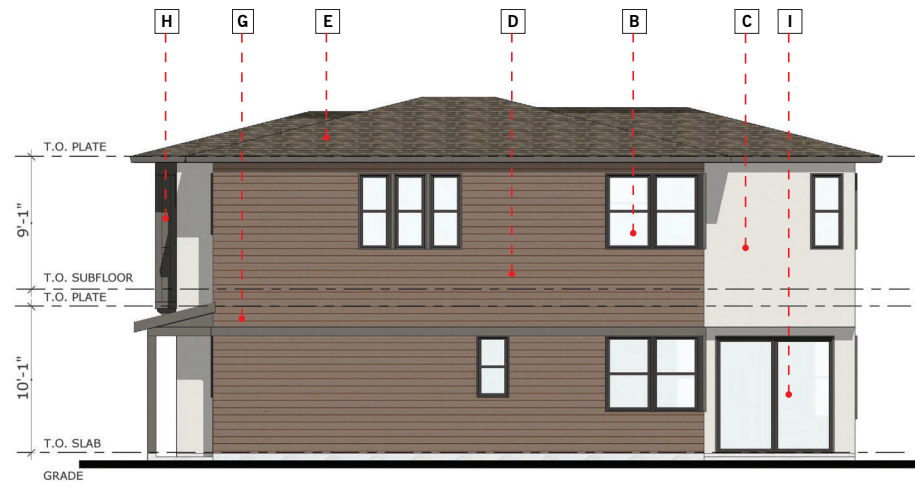
PROJECT NO. 1005.012 | JANUARY 16, 2024

VOP

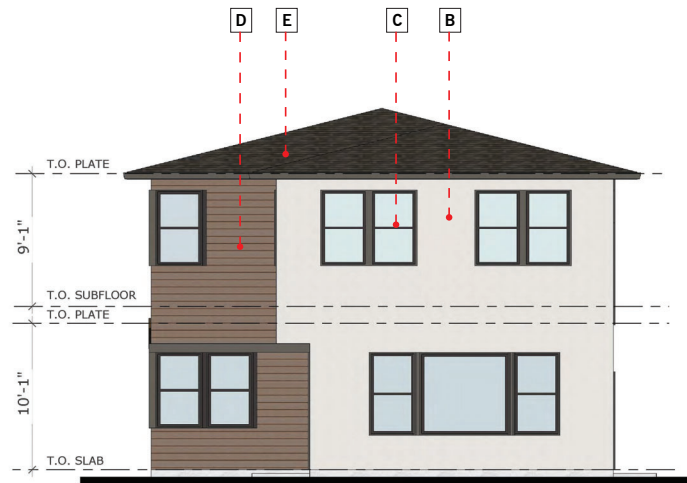
SHEET **A.9**
DAHLIN



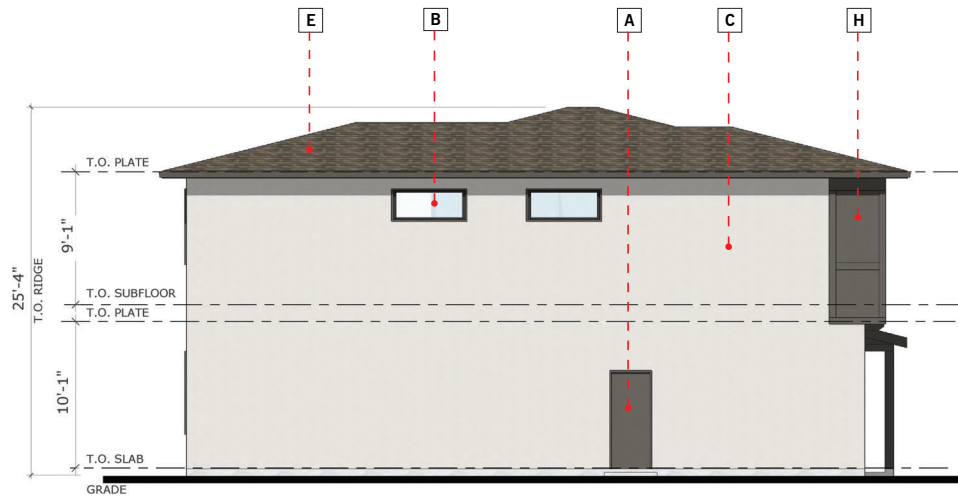
FRONT ELEVATION



RIGHT ELEVATION



REAR ELEVATION



LEFT ELEVATION

MATERIAL LIST

- A** WOOD DOOR
- B** VINYL WINDOWS
- C** STUCCO
- D** 8" HORIZ. LAP SIDING
- E** COMPOSITE SHINGLE ROOFING
- F** ALUMINUM GARAGE DOOR
- G** STANDING SEAM ROOFING
- H** PAINTED ACCENT PANEL
- I** SLIDING GLASS DOOR

4503 CHEENEY STREET

IN SANTA CLARA, CA

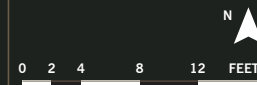
ARCHITECTURAL REVIEW - SUBMITTAL 1

DAHLIN GROUP ARCHITECTURE | PLANNING | INTERIORS

BUILDING ELEVATIONS

PLAN 1 / COLOR SCHEME C

WWW.DAHLINGROUP.COM



PROJECT NO. 1005.012 | JANUARY 16, 2024

VOP

SHEET A.10



COLOR SCHEME A



HORIZONTAL LAP SIDING
SHERWIN WILLIAMS
"GROUNDED"
SW 6089



STUCCO
SHERWIN WILLIAMS
"ELDER WHITE"
SW 7014



TRIM / GARAGE DOOR / FASCIA
SHERWIN WILLIAMS
"BLACK FOX"
SW 7020



ENTRY DOOR
SHERWIN WILLIAMS
"FRENCH ROAST"
SW 6069



ROOF
GAF ASPHALT SHINGLES
TIMBERLINE, OR EQUAL
"MISSION BROWN"

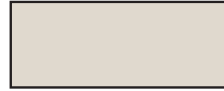


SITE KEY

COLOR SCHEME B



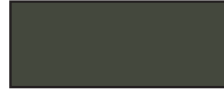
HORIZONTAL LAP SIDING
SHERWIN WILLIAMS
"SHADE GROWN"
SW 6188



STUCCO
SHERWIN WILLIAMS
"SILVERPLATE"
SW 7649



TRIM / GARAGE DOOR / FASCIA
SHERWIN WILLIAMS
"BLACK FOX"
SW 7020



ENTRY DOOR
SHERWIN WILLIAMS
"RIPE OLIVE"
SW 6209



ROOF
GAF ASPHALT SHINGLES
TIMBERLINE, OR EQUAL
"MISSION BROWN"



SITE KEY

COLOR SCHEME C



HORIZONTAL LAP SIDING
SHERWIN WILLIAMS
"CRAFT PAPER"
SW 6125



STUCCO
SHERWIN WILLIAMS
"SIMPLIFY BEIGE"
SW 6085



TRIM / GARAGE DOOR / FASCIA
SHERWIN WILLIAMS
"BLACK FOX"
SW 7020



ENTRY DOOR
SHERWIN WILLIAMS
"SHADE GROWN"
SW 6188



ROOF
GAF ASPHALT SHINGLES
TIMBERLINE, OR EQUAL
"MISSION BROWN"



SITE KEY

MATERIALS (ALL COLOR SCHEMES)

EXTERIOR FINISHES

- STUCCO - MEDIUM SAND FINISH
- CEMENTIOUS SMOOTH LAP SIDING - 7" EXPOSURE
- CEMENTIOUS VERTICAL PANEL SIDING - SMOOTH FINISH

WINDOWS & DOORS

- VINYL FRAMED WINDOWS - BRONZE (OR SIM.) FINISH
- PAINTED FIBERGLASS FRONT ENTRY DOOR
- STANDARD PANEL GARAGE DOOR W/ LITES

TRIM / ACCENT

- 2" DEEP AND 2" WIDE RECESS AROUND WINDOWS @ STUCCO FINISHES
- 2 1/2" X 3/4" CEMENTIOUS WINDOW TRIM @ LAP SIDING FINISHES
- 5 1/2" X 3/4" CEMENTIOUS TRIM @ PANEL FINISH
- 9" X 9" CEMENTIOUS TRIM WRAPPED COLUMNS

ROOF

- ASPHALT COMPOSITION SHINGLE ROOF
- PREFINISHED STANDING SEAM METAL ROOF

4503 CHEENEY STREET

IN SANTA CLARA, CA

ARCHITECTURAL REVIEW - SUBMITTAL 1

DAHLIN GROUP ARCHITECTURE | PLANNING | INTERIORS

COLORS AND MATERIALS

WWW.DAHLINGROUP.COM

PROJECT NO. 1005.012 | JANUARY 16, 2024



VOP

DAHLIN

SHEET A.11