




**Study Session on
2025-2030
Community Plan to
End Homelessness
and Update on
Local Efforts**

**Item #1, RTC #26-400
April 21, 2026**




**City of
Santa Clara**
The Center of What's Possible

Agenda

- Introductions
- Recap July 2025 Study Session & Updates on Local Efforts (15 minutes)
- Santa Clara County Community Plan to End Homelessness (20 Minutes)
 - Share results from the 2020-2025 Plan
 - Share the Draft 2025-2030 Plan
- Discuss How the Countywide and City Plans Align (10 minutes)
- City Council Questions and Discussion (45 minutes)

2



City of Santa Clara
The Center of What's Possible

Introductions


City Staff:

- **Christine Jung** | Deputy City Manager
- **Adam Marcus** | Housing & Community Services Manager
- **Greg Pensinger** | Management Analyst - Homelessness

Continuum of Care:

- **KJ Kaminski** | Director, Office of Supportive Housing
- **Ray Bramson** | Chief Operating Officer, Destination: Home

3




City of Santa Clara
The Center of What's Possible

Recap from July 8, 2025 Study Session

- Changing landscape of homelessness and resources
- Overview of the Countywide Supportive Housing System
- Overview of City programs and resources
- City's Draft Citywide Plan to Reduce Homelessness and Its Impacts (Two-Year Workplan) and key work items
- City Council comments and questions

4


 **City of Santa Clara**
The Center of What's Possible

City Homelessness Services & Resources

Housing Solutions

Types of Housing and Shelter

- **Affordable Housing Production**
- **Affordable Housing Preservation**
- **Rapid Rehousing/Tenant Based Rental Assistance**
- Emergency Shelter
- Interim Housing (Non-congregate)
- Transitional Housing (Non-congregate)
- **Permanent Supportive Housing**




5

 **City of Santa Clara**
The Center of What's Possible

City Homelessness Services & Resources Cont.

- **Homelessness Prevention**
 - Tenant Based Rental Assistance
 - Homelessness Prevention System
 - Landlord/tenant mediation
 - Domestic violence survivor support
 - 211 Hotline

6




Homelessness Prevention Contributions & Data

- **County’s Homelessness Prevention System:** City contributes \$50,000 annually, which directly benefits at-risk Santa Clara residents. In the past five years, over 1,500 Santa Clara residents were served. In FYs 2023/24 and 2024/25, 333 and 169 households were respectively served.
- **Tenant Based Rental Assistance:** A short-term subsidy program that helps cover housing costs for a limited period, typically up to two years, while a household works toward stable housing and self-sufficiency.

	FY 20-21	FY 21-22	FY 22-23	FY 23-24	FY 24-25
Households Served	35	25	16	28	19
Successful Graduations	12	7	5	9	2

7



City Homelessness Services & Resources Cont.

- **Crisis Response**
 - Project based intensive case management
 - Mobile hygiene and laundry service
 - Crisis intervention (SCPD Community Response Team)
 - Psychiatric Emergency Response Team (PERT)
 - Mental health coordination services
 - Encampment cleanups
 - Towing

8



Crisis Response Data

- **Mental Health Coordination Services (Care Solace)**
 - Funded by opioid settlement funds in SCPD budget to address needs of vulnerable populations disproportionately impacted by Substance Use Disorder (SUD) and divert people with SUD from the justice system into treatment.
 - ~11,000 service requests since April 2025.
- **Psychiatric Emergency Response Team (PERT)**
 - The PERT mental health clinician provides on-scene crisis intervention, supports de-escalation efforts, and facilitates direct connections to behavioral health and SUD treatment services.
 - Following the PERT clinician's onboarding in 2023, mental-health related calls for service declined approximately 18 percent from the 2022 baseline and remain below pre-clinician levels.

9



Crisis Response Data Cont.

- **Encampment Cleanups (Tucker Construction)**
 - FY 2025/26: 16 cleanups completed, 3 scheduled between April – June 2026, totaling estimated cost of \$140,391.
 - SCPD Officers support each cleanup, totaling estimated cost of \$24,320 based on ~\$1,280 in overtime per cleanup.
- **Towing (Lima Towing and Unique Towing)**
 - FY 2025/26: 28 RVs have been towed through April 1, 2026, totaling \$56,000 based on \$2,000 towing fee per RV.
 - Note, these are citywide numbers and not specific to RVs used for illegal storage or illegal activities.

10



Key Work Efforts

- **Relocation of Dignity on Wheels (Mobile Shower and Laundry Services)**
 - Several Councilmembers expressed interest in relocating program from Marsalli Park to different location where unhoused individuals could also receive other basic needs services.
 - Marsalli Park site was new and underutilized. Since then, usage has increased to an average of 28 people per month.
 - Staff has identified potential relocation site in Central Park, which is accessible to public transit and resources including Central Park Library and St. Justin's Catholic Church which provides food (Tuesday - Saturdays) and clothing.
 - While the relocation can improve access to services, it may also draw more users to the area.

11



Dignity on Wheels Usage



12



Key Work Efforts Cont.

- **Council Priority #24: Provide Interim Supportive Housing and Outreach Services for the Unhoused**
 - **Street Outreach/Case Management, and Temporary Shelter Programs (Pending)**
 - Agreement with WeHOPE under review/negotiation.
 - WeHOPE requested additional changes to agreement prior to execution, which staff is evaluating for feasibility.
 - **Benton/Lawrence Interim Family Housing (County, LifeMoves, and City)**
 - Agreement with County under review, pending Council approval.
 - Building permit under review.

13



Key Work Efforts Cont.

- **Council Priority #33: Off-Street Parking for RVs/People Living in Cars**
 - 155 City-owned sites reviewed against recommended criteria
 - Criteria: Size, environmental factors, sensitive receptors, site readiness
 - Subsequent review after July 2025 Study Session: Potential sites had issues related to environmental and ingress/egress issues, and/or were adjacent to sensitive receptors
 - Staff is exploring alternative approaches:
 1. Real estate broker services to identify potential private properties (Staff concluded RFP for real estate services and is currently in contract negotiations with target to execute agreement in May/June 2026); and
 2. Request for Proposals for private property owners to implement their own safe parking program with seed funding from City.

14



Next Steps on Key Work Efforts

- **Dignity on Wheels:** Pending Council discussion, staff will move forward with relocation to Central Park in May or keep program at current Marsalli Park location.
- **Street Outreach:** Pending negotiations with WeHOPE, staff will continue working to secure a street outreach team (Spring 2026).
- **Interim Housing:** Return to City Council seeking adoption of a revenue agreement with the County for Benton/Lawrence (Summer 2026).
- **Off-street RV Parking:** Pending Council discussion, staff will return to City Council with action on next steps.


15



Update on Regional Community Plan to End Homelessness

**Santa Clara County
Continuum of Care (CoC)**


16



City of Santa Clara
The Center of What's Possible

Regional and City Plan Alignment

17



City of Santa Clara
The Center of What's Possible

Homelessness Plans



```
graph TD; A["2025-2030  
Countywide Plan to End  
Homelessness  
(4 Focus Areas)"] --> B["North County Sub-Regional Plan"]; B --> C["City of Santa Clara  
Homelessness Response Plan  
(6 Strategy Areas)"]
```

2025-2030
Countywide Plan to End
Homelessness
(4 Focus Areas)

North County Sub-Regional Plan

City of Santa Clara
Homelessness Response Plan
(6 Strategy Areas)

18



Santa Clara's Draft Citywide Plan

- **Strategy 1:** Prevent homelessness for City residents who are at-risk (Prevention & Housing Stability)
- **Strategy 2:** Increase availability of short-term shelter, permanent supportive housing & Extremely Low-Income (ELI) housing (Shelter, Permanent Supportive Housing & ELI housing)
- **Strategy 3:** Conduct proactive street outreach to engage who are unsheltered and connect them to resources (Outreach and Coordinated Entry)
- **Strategy 4:** Address basic needs of people living outside, including health, and hygiene (Basic Needs, Hygiene & Safe Access)
- **Strategy 5:** Reducing the impacts of unsheltered homelessness throughout the community (Addressing Impacts of Homelessness)
- **Strategy 6:** Fostering productive community conversation about the causes, needs, and experience of homeless to foster support and volunteerism (Community Support & Lived Experience Engagement)

19



CoC Focus Area 1: Prevent people from becoming homeless

Aligns with City's Strategy 1

- Eviction prevention & tenant protections
- Rental Assistance
- Fair housing / legal supports
- Health care linkages

38,060 People Received Homelessness Prevention Assistance

93% of families remained stably housed while receiving services.



20

CoC Focus Area 2: Continue to house people and support them in retaining their housing

Aligns with City's Strategy 2

- Increase permanent & temporary housing capacity
- Support Interim Housing development
- Prioritize Extremely Low-Income ($\leq 30\%$ AMI) households
- Improve tenancy supports & coordination



Kifer Senior Apartments

21

CoC Focus Area 3: Strengthen access to care and services for people experiencing unsheltered homelessness

Aligns with City's Strategies 3 & 4

- Expand outreach capacity & coordination
- Strengthen basic needs services
- Aligned approaches to service provision



22



City of Santa Clara
The Center of What's Possible


CoC Focus Area 4: Center and invest in people with lived experience to lead and transform the homeless system

Aligns with City's Strategy 6

- Community engagement
- Center voices of people with lived experience
- Support informed conversations



23




City of Santa Clara
The Center of What's Possible

High-Level Plan Alignment

- **Shared Focus Areas/Strategies**
 - Reduce inflow of new households into homelessness (prevention)
 - Expand housing and shelter options
 - Improve access to services
- **Shared intent:** Reduce returns to homelessness and shorten time to securing housing

24




City of Santa Clara
The Center of What's Possible

Key Difference

- **City's Strategy 5: Reduce the impacts of unsheltered homelessness throughout the community**
 - Improve City coordination (internally and with partners) to triage crises, and ensure safe and healthy community spaces for all residents.
 - Sanitization and safety efforts (e.g., encampment management and blight reduction).
- **Partial Alignment with CoC Focus Area 3 – Strategy C:**
 - Strengthen coordination between partners to divert non-violent homeless-related calls from law enforcement.
 - Expansion of re-entry and behavioral health services as alternatives to arrest or emergency room admission.
 - Decrease the number of people residing in encampments and reduce criminalization of homelessness for those who are unsheltered.

25



City of Santa Clara
The Center of What's Possible

Next Steps

- Continue to implement local programs.
- Return to City Council to consider endorsement of the 2025-2030 Community Plan to End Homelessness (Fall 2026).
 - Sub-regional plans being developed may inform the City's final Citywide Plan to Reduce Homelessness and Its Impacts and vice versa.
- Adoption of the City's Plan (Fall 2026).


26



City of Santa Clara
The Center of What's Possible

City Council Discussion

27



City of Santa Clara
The Center of What's Possible

Community Plan Questions from COC

1. Are the Focus Areas included in the draft Plan reflective of the needs and goals of your community?
2. What would the Council like to see included as part of their sub-regional plan?
3. How can we work with the Council to help share this information with the community?

28



City Questions

- **Off-street RV Parking:**
 - Provide feedback on alternative options:
 1. Real estate broker services to identify potential private properties.
 2. Request for Proposals for private property owners to implement their own safe parking program with seed funding from City.

- **Dignity on Wheels:** Based on updated information, does the Council still want to relocate the program to Central Park, or keep it at current Marsalli Park site?

29



Study Session on 2025-2030 Community Plan to End Homelessness and Update on Local Work Efforts

Item #1, RTC #26-400

April 21, 2026

Key Focus Areas

- 1. Prevent People From Becoming Homeless**
Focus: Prevention
- 2. Continue to House People and Support Them in Retaining their Housing**
Focus: Housing through programs (shelter to permanent)
- 3. Strengthen Access to Care and Services for People Experiencing Unsheltered Homelessness.**
Focus: Unsheltered individuals
- 4. Center and Invest in People with Lived Experience to Lead and Transform the Homeless System**
Focus: Lived experience lead throughout the system





1

AGENDA

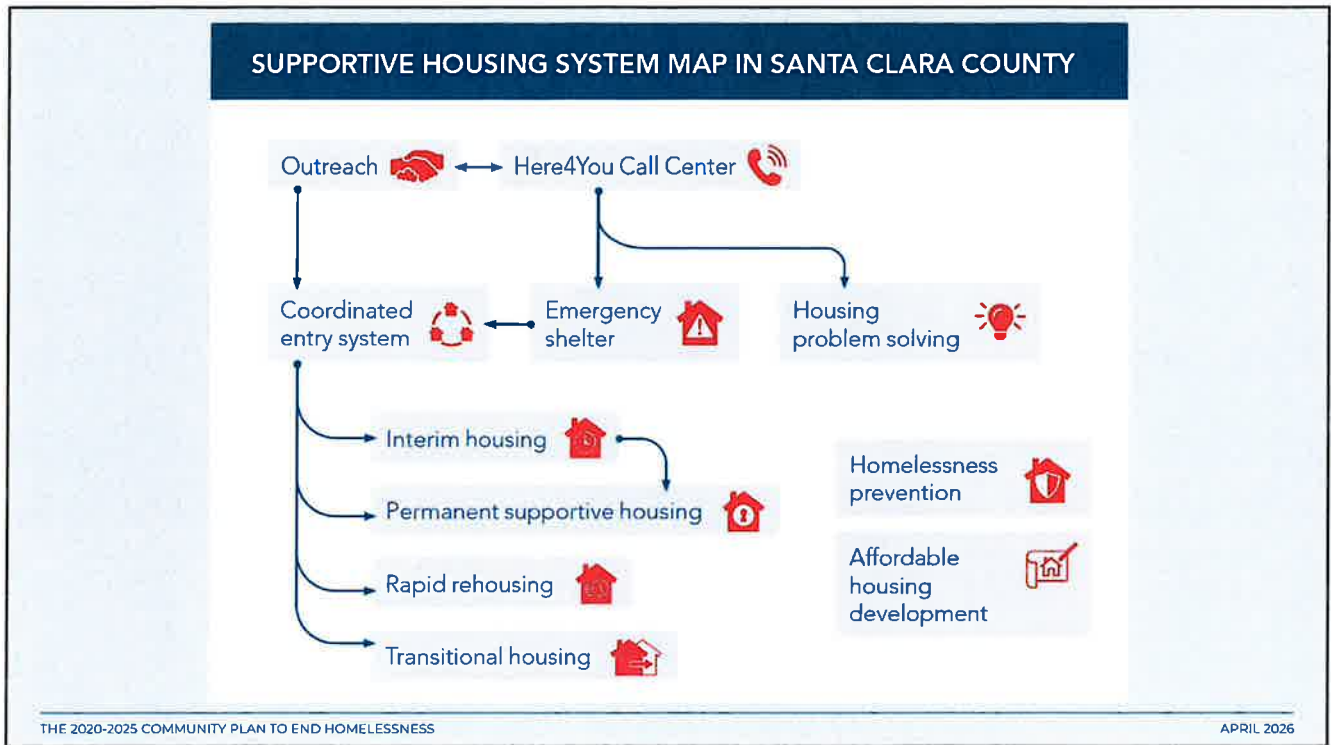
- Progress from the 2020-2025 Community Plan to End Homelessness
- Santa Clara Households Data
- Developing the Next 5-Year Community Plan to End Homelessness
- Next Steps

THE 2020-2025 COMMUNITY PLAN TO END HOMELESSNESS

APRIL 2026

2

POST MEETING MATERIAL



3

ABOUT THE CONTINUUM OF CARE

- Broad group of stakeholders dedicated to ending and preventing homelessness
- Ensure a community-wide implementation of efforts & programmatic and systemic effectiveness
- County of Santa Clara serves as the lead agency

Government

Nonprofit

Philanthropy

Private Sector

Lived Experience

Community

...and many more!

THE 2020-2025 COMMUNITY PLAN TO END HOMELESSNESS

4

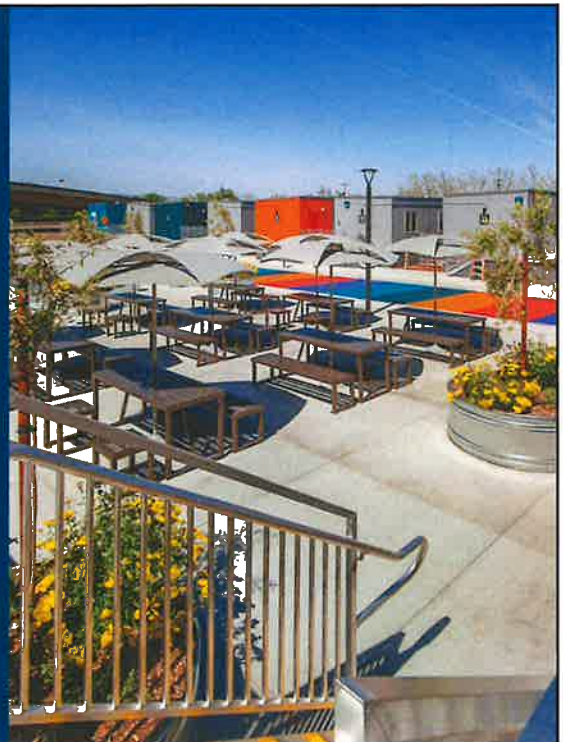
ABOUT DESTINATION: HOME



- Destination: Home is a 501(c)3 non-profit organization, and a Supporting Organization of the Silicon Valley Community Foundation
- Unique public-private partnership established in 2008 to advance collective impact strategies for ending homelessness in Santa Clara County
- Key roles include funding impactful strategies, incubating new solutions, public policy and advocacy, community engagement, and research

SANTA CLARA COUNTY COMMUNITY PLAN TO END HOMELESSNESS

Progress from the 2020-2025 Community Plan to End Homelessness



2020-2025 COMMUNITY PLAN PROGRESS

2025 GOAL:
20,000 People
Housed

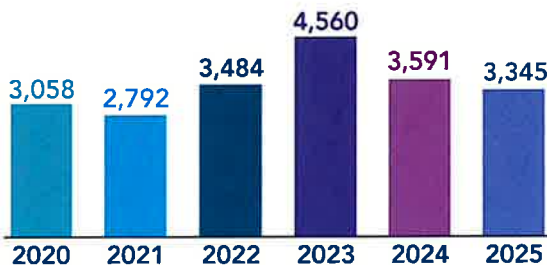
GOAL ACHIEVED!

THE 2020-2025 COMMUNITY PLAN TO END HOMELESSNESS



20,830
People Housed

PEOPLE HOUSED BY YEAR



7

2020-2025 COMMUNITY PLAN PROGRESS

2025 GOAL:
20,000 People
Housed

GOAL ACHIEVED!

THE 2020-2025 COMMUNITY PLAN TO END HOMELESSNESS



KEY SUBPOPULATIONS



47%
Chronically Homeless**



26%
Families with Children



13%
Young Adults (18-24)



15%
Veterans



9%
Seniors (65+)

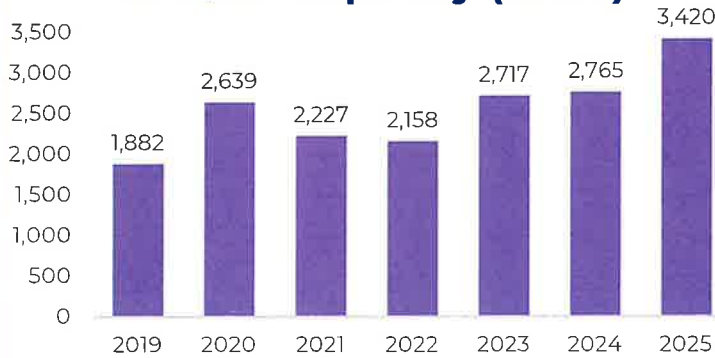
*Based on number of households housed

**A person who has experienced homelessness for more than a year and has a disabling condition

8

Temporary Housing & Shelter Capacity Increased by 82%

Temporary Housing and Shelter Capacity (units)



27,037 people placed in temporary housing or shelter between 2020 and 2025

9

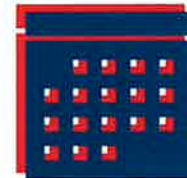
38,060 People Received Homelessness Prevention Assistance

93% of families remained stably housed while receiving services.



ONE YEAR LATER

Only **5% of households** became homeless.



Homelessness Prevention Capacity

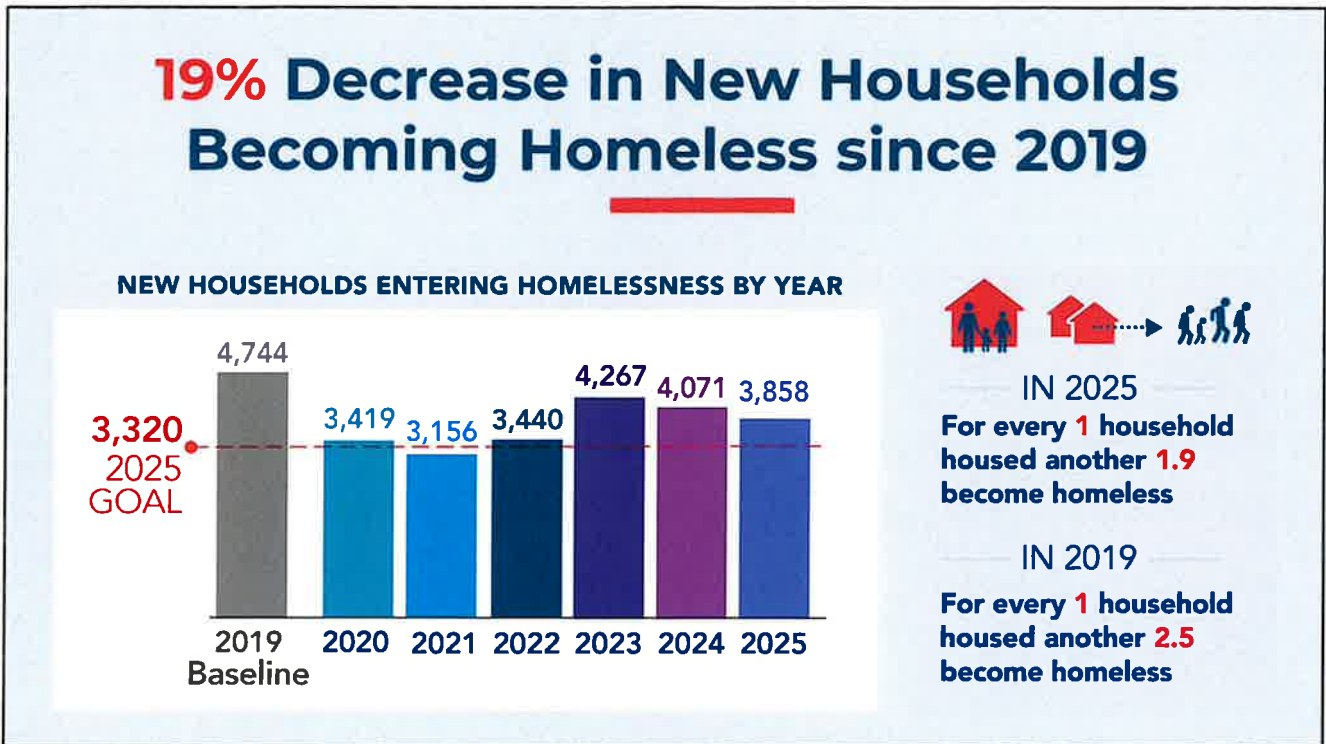
2,693 households

↑ **75% since Jan. 1, 2020**

2025 GOAL: 2,500 households

GOAL ACHIEVED!

10



11

2020-2025 Community Plan Progress

Santa Clara Households

THE 2020-2025 COMMUNITY PLAN TO END HOMELESSNESS

12

2020-2025 Community Plan Progress:

Santa Clara Households

1,894 People Housed

~9% of total people housed countywide
1,894 people represents 1,092 separate households

3,443 People Placed in Temporary Housing and Shelter

~13% of total people served in temporary housing countywide
3,443 people represents 2,131 separate households

1,514 People Received Homelessness Prevention Assistance

~4% of total people served by homelessness prevention countywide
1,514 people represents 777 separate households

In 2025, for every 1 household housed, another 1.5 became homeless.

THE 2020-2025 COMMUNITY PLAN TO END HOMELESSNESS
APRIL 2026

13

HOW ARE PEOPLE FROM SANTA CLARA BENEFITING FROM SERVICES?

Table 1: Santa Clara-Affiliated Households Receiving Supportive Housing System Services in 2025

Program-Type	Total Households Served	Santa Clara-Affiliated Households
Permanent Supportive Housing	4,556	350
Rapid Rehousing	1,679	241
Emergency Shelter	5,102	531
Transitional Housing	529	43
Street Outreach	5,194	475
Safe Parking	550	40
Homelessness Prevention	3,121	153
Housing Problem Solving	4,530	416
Services Only	8,944	915

Santa Clara-Affiliated means:

- Address in Santa Clara
- Lived in Santa Clara prior to becoming homeless
- Works in Santa Clara
- Kids go to school in Santa Clara
- Spend most of time in Santa Clara

THE 2020-2025 COMMUNITY PLAN TO END HOMELESSNESS
APRIL 2026

14

Estimated Housing Investments For **Santa Clara** Households in 2025

Program Type	Estimated Annual Cost Per Household	Households Affiliated with Santa Clara in 2025	Estimated Annual Funding for Households Affiliated with Santa Clara
Permanent Supportive Housing	\$37,380	350	\$13,083,000
Rapid Rehousing	\$29,250	241	\$7,049,250
Homelessness Prevention	\$15,500	153	\$2,371,500
Total			\$22,503,750

*Note: Santa Clara-affiliated households also receive funding to support their housing stability through the Housing Problem Solving program.

Additional Partnerships in **Santa Clara**

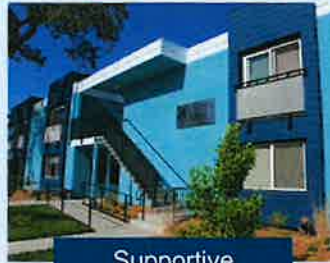


Affordable Housing Development

Total: \$96,690,000

The City and County have partnered on five affordable housing projects receiving Measure A Housing Bond and other housing funds:

- **Calabazas Community Apartments** - \$29 million
- **Agrihood Senior Apartments** - \$23.5 million
- **Kifer Senior Apartments** - \$14 million
- **Civic Center Multifamily** - \$12.1 million
- **Clara Gardens** - \$18 million

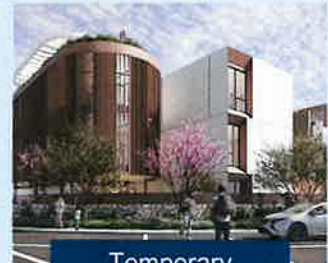


Supportive Housing Services

FY 25-26: ~\$2,200,000

The County funds supportive services for residents at **Agrihood, Calabazas, and Kifer Senior Apartments**, and has committed to funding services at **Civic Center Multifamily and Clara Gardens**.

The County also funds supportive services at **Belovida and Peacock Commons** in Santa Clara as part of the scattered site PSH program.

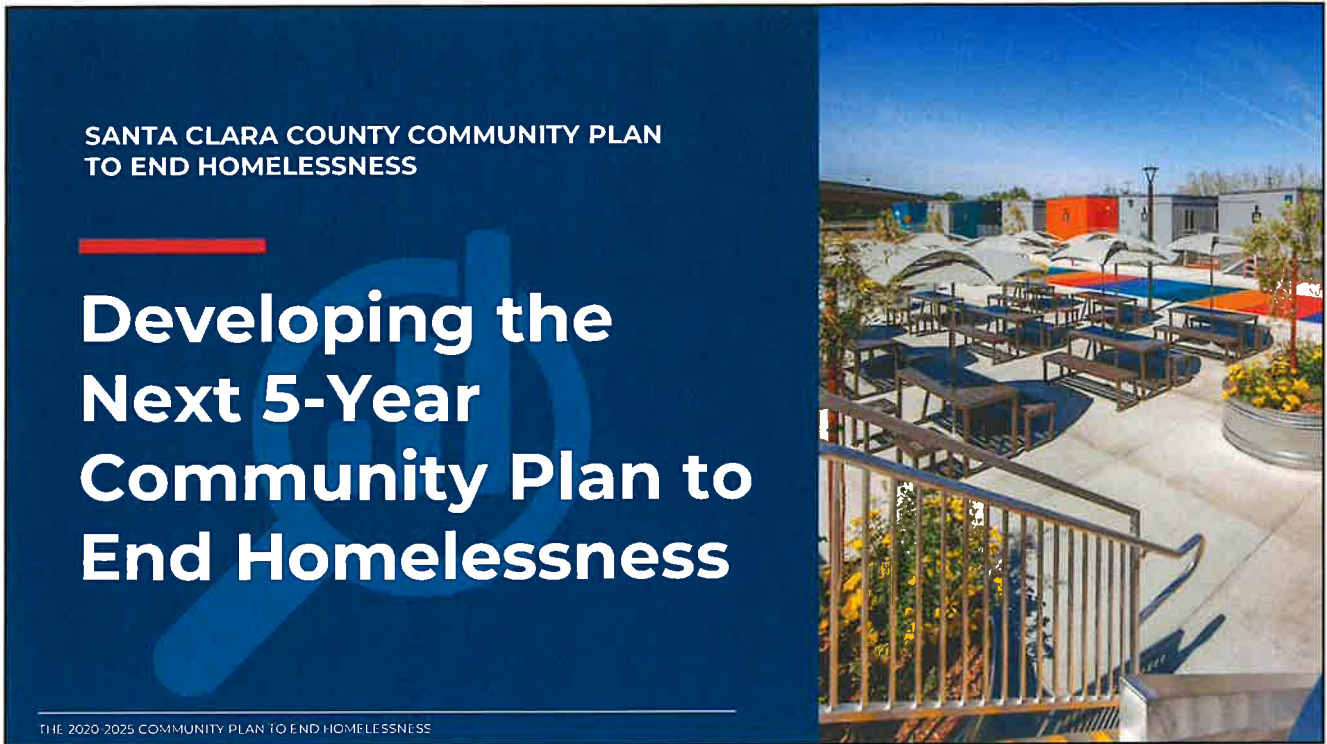


Temporary Housing & Shelter

FY 25-26: \$750,000

The County funds temporary housing for youth at **Covenant House**.

The City and County are also partnering to develop the **Santa Clara Family Community**, providing 30 new units of shelter (120 beds) for families experiencing homelessness. The County is serving as co-applicant for the Homekey funds and contributing ~\$7 million to support construction and initial operation costs.



17



18

Key Focus Areas

1. **Prevent People From Becoming Homeless**
Focus: Prevention
2. **Continue to House People and Support Them in Retaining their Housing**
Focus: Housing through programs (shelter to permanent)
3. **Strengthen Access to Care and Services for People Experiencing Unsheltered Homelessness.**
Focus: Unsheltered individuals
4. **Center and Invest in People with Lived Experience to Lead and Transform the Homeless System**
Focus: Lived experience lead throughout the system

THE 2020-2025 COMMUNITY PLAN TO END HOMELESSNESS



Sub-Regional Plans

4 Sub-Regional Groups: North County, West Valley, South County, San José

- Description of regional characteristics, priorities, and special populations
- Summary of existing efforts and investments in homelessness
- Framework of shared goals, strategies, and priorities that align with the Plan
- Compilation of links to cities' own homelessness plans (where applicable)

THE 2020-2025 COMMUNITY PLAN TO END HOMELESSNESS



Additional Input Opportunities



Draft Plan posted on the Office of Supportive Housing's website [here](#).



Four Community Convenings in North County, West Valley, South County, and San José

North County Convening:

- **Date:** Thursday, April 30th, 6-8 pm
- **Location:** El Palo Alto Room at Mitchell Park Community Center, 3700 Middlefield Road, Palo Alto, 94303