

**RECORD WITHOUT FEE PURSUANT
TO GOV'T CODE SECTION 6103**

Recording Requested by:
Office of the City Attorney
City of Santa Clara, California

When Recorded, Mail to:
Office of the City Clerk
City of Santa Clara
1500 Warburton Avenue
Santa Clara, CA 95050

Form per Gov't Code Section 27361.6

[SPACE ABOVE THIS LINE FOR RECORDER'S USE]

RESOLUTION NO. _____

**A RESOLUTION OF THE CITY OF SANTA CLARA,
CALIFORNIA, ORDERING THE VACATION OF AN
EMERGENCY VEHICLE ACCESS EASEMENT AT 737
MATHEW STREET [APN 224-40-012 (2020-21)]**

BE IT RESOLVED BY THE CITY OF SANTA CLARA AS FOLLOWS:

WHEREAS, the City of Santa Clara currently possesses the Emergency Vehicle Access Easement described in Exhibit A and shown on Exhibit B, which Exhibits are incorporated herein by reference. Said Easement was dedicated by that certain document as mentioned in said Exhibits; and,

WHEREAS, pursuant to Section 8333 of the California Streets and Highways Code, the City Council "may summarily vacate a public service easement" in any of the following cases:

(a) The easement has not been used for the purpose for which it was dedicated or acquired for five consecutive years immediately preceding the proposed vacation.

(b) The date of dedication or acquisition is less than five years, and more than one year, immediately preceding the proposed vacation, and the easement was not used continuously since that date.

4. Effective date. This resolution shall become effective immediately.

I HEREBY CERTIFY THE FOREGOING TO BE A TRUE COPY OF A RESOLUTION PASSED AND ADOPTED BY THE CITY OF SANTA CLARA, CALIFORNIA, AT A REGULAR MEETING THEREOF HELD ON THE ___ DAY OF _____, 2021, BY THE FOLLOWING VOTE:

AYES: COUNCILORS:

NOES: COUNCILORS:

ABSENT: COUNCILORS:

ABSTAINED: COUNCILORS:

ATTEST:

NORA PIMENTEL, MMC
ASSISTANT CITY CLERK
CITY OF SANTA CLARA

Attachments incorporated by reference:

1. Exhibits A and B

K:\Engineering\Engineering\5-LPD\DOC\SC19366 Res vac EVAE.doc

**EXHIBIT A
Legal Description**

Vacation of Emergency Vehicle Access Easement

**AT
737 Mathew Street
Santa Clara, California
[APN (224-40-012)]**

Being a portion of Parcel 1 as said Parcel is shown on that certain Parcel Map, recorded February 3, 2020 in Book 929 of Maps, Pages 17-24, Santa Clara County Records, being more particularly described as follows:

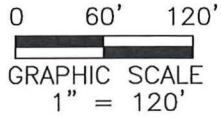
All of that "EVAE #2" as described in that certain Emergency Vehicle Access Easement recorded on October 3, 2019 as Document No. 24296066, Official Record of Santa Clara County.

A plat showing the above-described Easement is attached hereto and made a part hereof as Exhibit B
APN: 224-40-012

Prepared by:
Ruth and Going, Inc.
2216 The Alameda
Santa Clara, CA 95050
(408) 236-2400
R+G Job# 17-919H



2021-05-18



LANDS OF UNION PACIFIC TRANSPORTATION

APN 224-35-014

PARCEL 1
553-M-49
APN 224-35-017

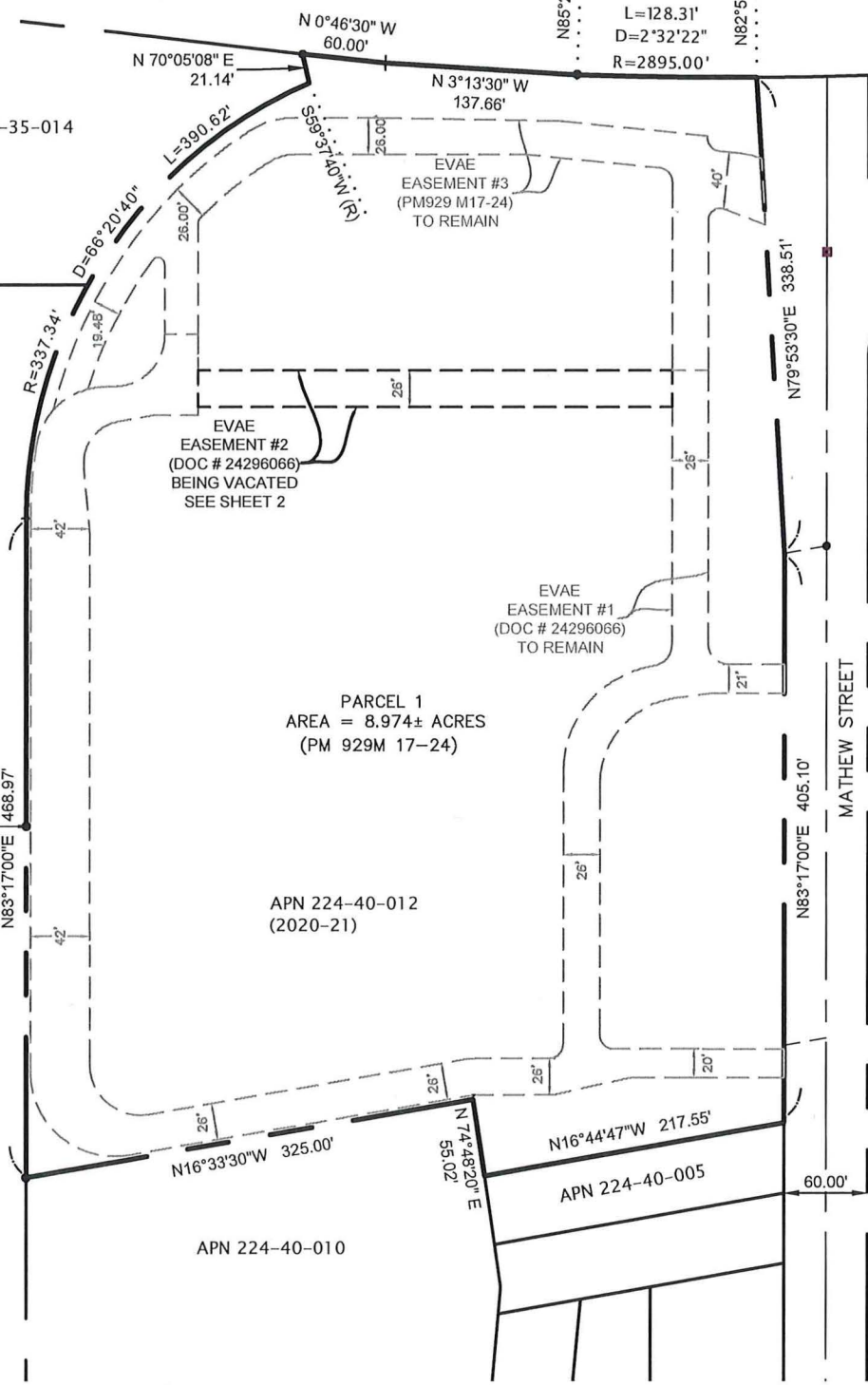
PARCEL 2
668-M-11
APN 224-35-020

PARCEL 1
AREA = 8.974± ACRES
(PM 929M 17-24)

APN 224-40-012
(2020-21)

APN 224-40-010

L=128.31'
D=2°32'22"
R=2895.00'



Drawing file: Q:\Civil\17919B\Dwg\EVAE#2-Removal\ SH01-EVAE.dwg
May 18, 2021 - 11:54am

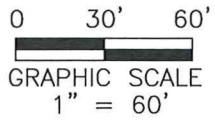
SC 19,366 SHEET 1 OF 2

R+G RUTH AND GOING, INC.
Civil Engineering Land Surveying
2216 THE ALAMEDA SANTA CLARA, CA. 95050
(408) 236-2400

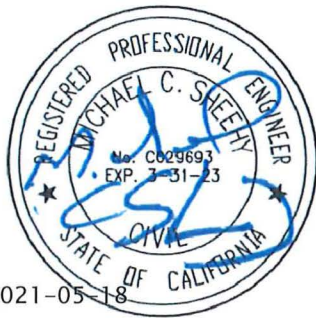
EXHIBIT B
**Emergency Vehicle Access
Easement (EVAE) Vacation**

Vantage Data Center
City of Santa Clara California

2021-05-18	17919H	Drwn.: SNM
Dept.: Civil	Scale: 1" = 120'	Chkd.: SPS

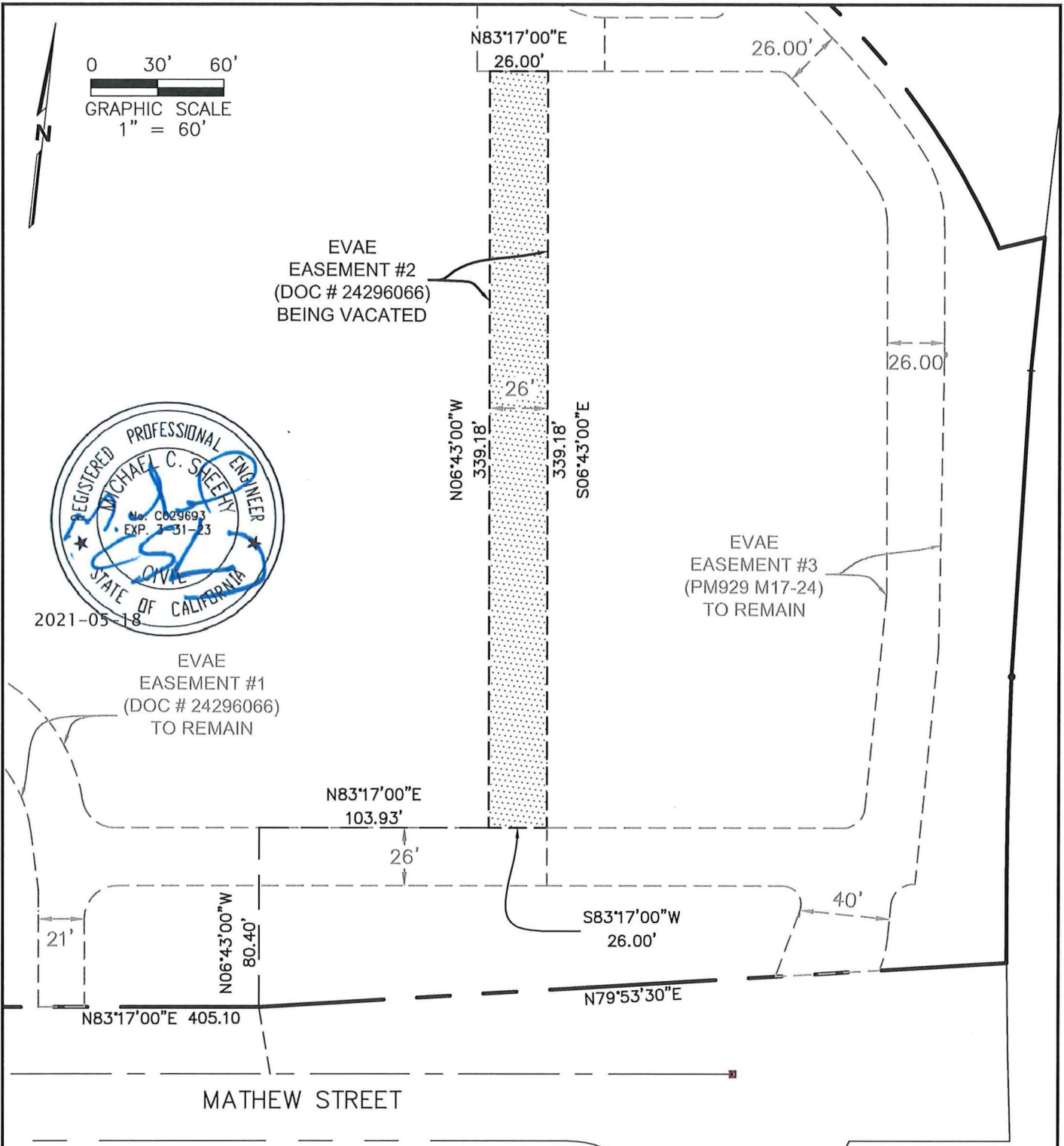


EVAE
EASEMENT #2
(DOC # 24296066)
BEING VACATED



EVAE
EASEMENT #1
(DOC # 24296066)
TO REMAIN

EVAE
EASEMENT #3
(PM929 M17-24)
TO REMAIN



Drawing file: Q:\Civil\17919B\Dwg\EVAE#2-Removal\ SH02-EVAE.dwg
May 18, 2021 - 11:56am

SC19,366

SHEET 2 OF 2



RUTH AND GOING, INC.

Civil Engineering Land Surveying
2216 THE ALAMEDA SANTA CLARA, CA. 95050
(408) 236-2400

EXHIBIT B
Emergency Vehicle Access
Easement (EVAE) Vacation

Vantage Data Centers

City of Santa Clara

California

2021-05-18	17919H	Drwn.: SNM
Dept.: Civil	Scale: 1" = 60'	Chkd.: SPS