

PROJECT SUPPORT STATEMENT

AT&T MOBILITY CCL06126

Site Name: CCL06126 – Planning No. PLN23-00148

Location: 3111 Benton Street, Santa Clara, CA 95051

APN: 290-27-006

Introduction

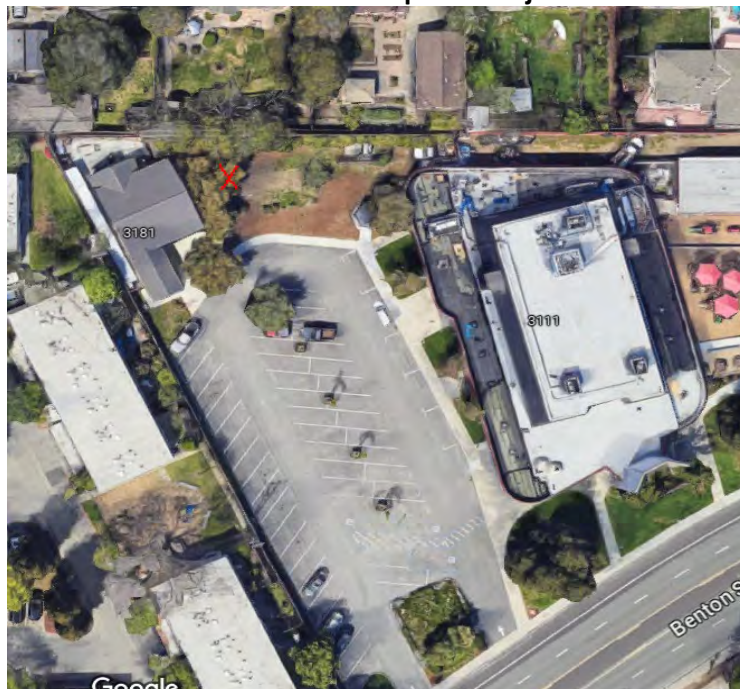
AT&T is seeking to improve communications service to residences, businesses, public services, and area travelers in the City of Santa Clara. AT&T maintains a strong customer base in Santa Clara and strives to improve coverage for both existing and potential customers. Currently, this portion of the AT&T network is suffering from poor coverage due to an insufficient number of telecommunications facilities and the ever-increasing volume of service. To address this issue, AT&T is proposing a new wireless communications facility on a private parcel, to improve coverage for both existing and potential customers. This project will expand AT&T's existing network and improve call quality, signal strength, and wireless connection services in the City of Santa Clara. It will benefit residents, local businesses, public services, and commuters.

Additionally, this network development will increase public safety within this area and bring wireless service to areas that currently suffer from poor service. This unmanned facility will provide service to area travelers, residents and businesses 24 hours a day, 7 days a week. *This site will also serve as a backup to the existing landline service* in the area and will provide improved mobile communications, which are essential to modern day commerce and recreation.

Location/Design

This property is located within the jurisdiction of the City of Santa Clara and is zoned Public / Quasi at APN 290-27-006. This project is not within 1000' of a highway, 100 yards of an existing facility, and is not within a flood zone. This project was originally designed as light fixtures when submitted in March of 2023. To address the concerns provided in the Notice of Incomplete on April 5, 2023, AT&T has decided to change the design to a Broadleaf style tree.

Aerial View of Proposed Project



PROJECT SUPPORT STATEMENT

AT&T MOBILITY CCL06126

Project Description

The project will include an unmanned telecommunications facility that includes twelve (12) antennas located on two arrays along with associated tower-mounted equipment, and placed on a 60' stealth mono broadleaf, providing RAN at a center line of 44' & 52' on a lease area of 20' x 20'. Associated ground equipment will include a walk-in cabinet and a 30kw standby diesel generator, within the 30' x 30' lease area and enclosed by a new 6' wood fence and CMU wall that is already placed in an abandoned compound. The proposed facility is located near the back of the property in the parking lot. No parking spaces will be affected.

The project abides by the Public / Quasi Public (B) zone code. The proposed facility meets all setbacks within the zone. The proposed lease area has sufficient space for AT&T's tower, outdoor cabinet, and diesel generator. Power, telco and access are located on the underlying parcel, or within the public right of way.

Service Objectives

The purpose of this facility is to close a gap in coverage that exists in the residential region of Santa Clara. This facility will provide capacity support to the surrounding facilities, ensuring that service always remains reliable.

Coverage Maps

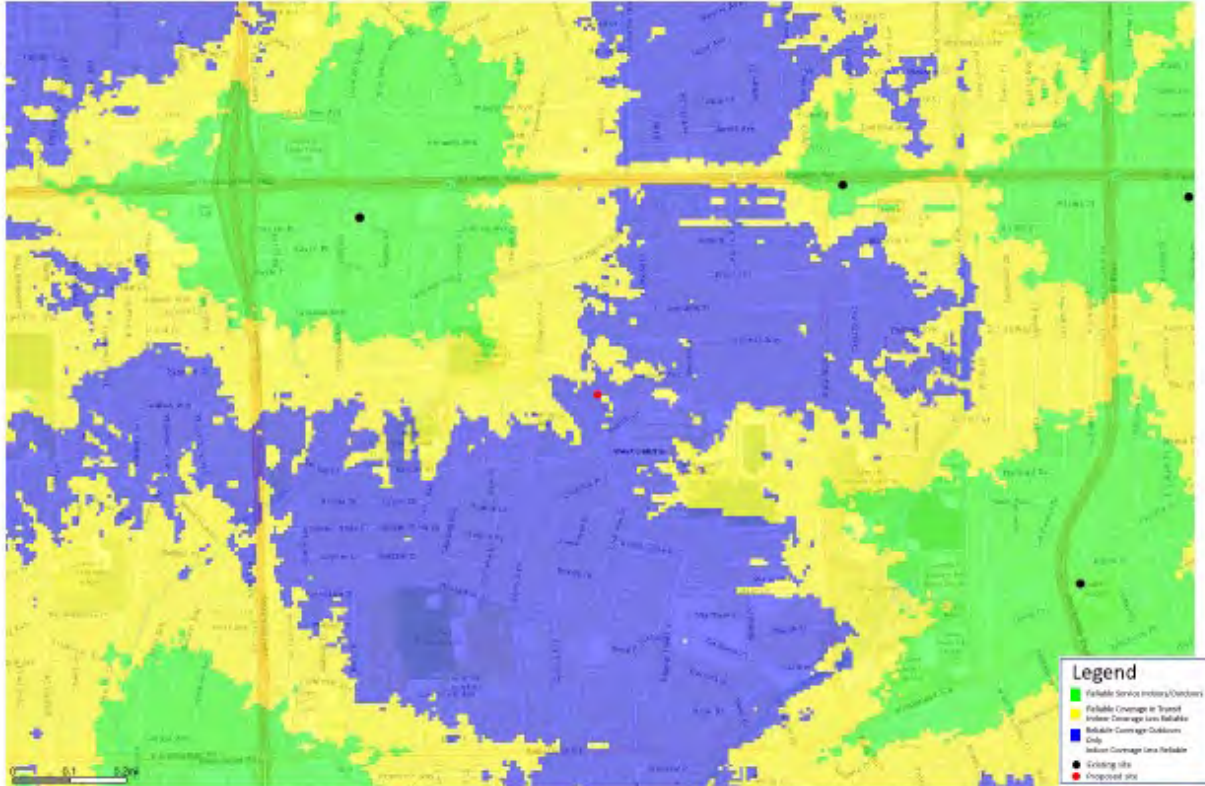
The Coverage Maps below provide a visual depiction of the gap that the existing facility will close and the other facilities in the network. Wireless technology operates using line-of-site technology, meaning that the facility must be tall enough to be able to "see" the surrounding facilities and coverage areas to function properly. At a centerline of 44' & 52', the facility has been designed at the minimum functioning height in order to achieve the coverage depicted below.

The uncolored areas show denote poor or no coverage, the area shown in blue shows some outdoor and indoor coverage, the area marked in yellow shows some in transit coverage and good indoor coverage, and the area marked in green indicates good indoor, in-transit, and outdoor coverage. Please note that much of the blue and yellow areas are replaced by green following activation of the proposed facility along the targeted coverage area, as well as much of the surrounding area.

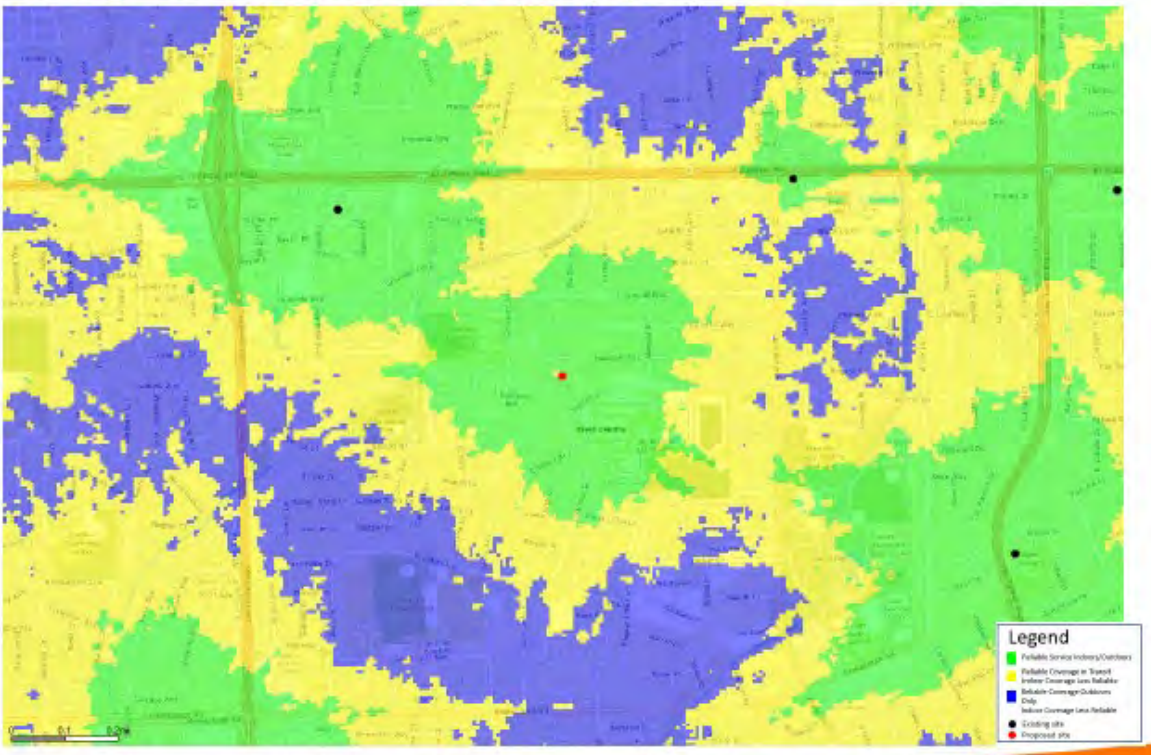
As shown in these coverage maps, the target area is filled with a green, indicating far greater indoor coverage within the target area, as well as the surrounding vicinity. Larger versions of these coverage maps are provided with this application.

PROJECT SUPPORT STATEMENT AT&T MOBILITY CCL06126

Existing Sites LTE 700 Coverage



Existing Sites + CCL06126 LTE 700 Coverage



PROJECT SUPPORT STATEMENT

AT&T MOBILITY CCL06126

Public Benefits of Improved Wireless Service

Modern life has become increasingly dependent on instant communication. No longer just a personal and social convenience, wireless telecommunication devices such as mobile phones, smartphones and tablets have become an important tool for business, commerce, and public safety. The proposed AT&T facility will provide service 24 hours a day, 7 days a week. This site will serve as a backup to the existing landline service in the area and will provide improved mobile communications, which are essential to emergency response, community safety, commerce, and recreation. The following wireless telecommunications users will benefit from improved coverage created as a result of the proposed facility:

- Commercial, industrial businesses in the area
- Public and community services in the area
- Residents, visitors and travelers

Safety Benefits of Improved Wireless Service

AT&T offers its customers multiple services such as voice calls, text messaging, mobile email, picture/video messaging, mobile web, navigation, broadband access, and E911 services. Mobile phone use has become an extremely important tool for first responders and serves as a back-up system in the event of a natural disaster.

Operations & Maintenance

The site is unmanned and requires no on-site personnel. Visitation to the site by a service technician for routine maintenance may occur up to once per month. The proposed site is entirely self-monitored and connected directly to a central office where sophisticated computers alert personnel to any equipment malfunction. Because the wireless facility is unmanned, there are no regular hours of operation and no impacts to existing local traffic patterns. No water or sanitation services will be required. The facility itself operates 24/7.

Emergency Stand-by Generator

AT&T installs a standby generator and batteries at all its cell sites. The generator and batteries serve a vital role in AT&T's Wireless' emergency and disaster preparedness plan. In the event of a power outage, AT&T communications equipment will first transition over to the backup batteries. The batteries can run on the site for approximately 8 hours, depending upon the demand placed upon the equipment. Should the power outage extend beyond the capacity of the batteries, the backup generator will automatically start and recharge the batteries. This two-stage backup plan is an extremely important component of every AT&T Wireless telecommunications site. The standby generator is operated for approximately 10-15 minutes per week for maintenance purposes.

**PROJECT SUPPORT STATEMENT
AT&T MOBILITY CCL06126**

Construction Schedule

The construction of the facility will be in compliance with all local rules and regulations. The crew size will range from two to ten individuals. The construction phase of the project will last approximately two months and will not exceed acceptable noise levels.

Lighting

Unless tower lighting is required by the FAA, the only lighting on the facility will be a shielded light dedicated for technicians inside the lease area.

Compliance with FCC Standards

This project will not interfere with any TV, radio, telephone, satellite, or other signals. Any interference would be against federal law and a violation of AT&T Mobility's FCC license. A radio frequency report verifying compliance with FCC guidelines is included with this application.

Notice of Actions Affecting Development Permit

In accordance with California Government Code Section 65945(a), AT&T requests notice of any proposal to adopt or amend the: general plan, specific plan, zoning ordinance, ordinance(s) affecting building or grading permits that would in any manner affect this development permit. Any such notice may be sent to 2009 V Street, Sacramento, CA 95818.