

**0RESOLUTION NO. 24-9349**

**A RESOLUTION OF THE CITY OF SANTA CLARA, CALIFORNIA,  
ADOPTING AMENDMENTS TO THE GENERAL PLAN LAND USE  
DESIGNATIONS OF SELECTED PARCELS IN ORDER TO  
MAINTAIN RESIDENTIAL CAPACITY CONSISTENT WITH STATE  
LAW, IN COMBINATION WITH THE ADOPTION OF THE CITY'S  
ZONING CODE MAP**

**WHEREAS**, on January 9, 2024, the City of Santa Clara (the "City") adopted the City's Zoning Code Update, the first comprehensive update of the Code in over 50 years;

**WHEREAS**, the 2010-2035 General Plan is the City's vision for future development; and

**WHEREAS**, the City's Zoning Code is the primary regulatory tool that implements the General Plan;

**WHEREAS**, under Government Code Section 65860, the General Plan and Zoning Ordinance of a jurisdiction are required to be consistent with each other;

**WHEREAS**, the Zoning Code is administered on a parcel-by-parcel basis through a Zoning Map with specific zoning districts applied to each parcel;

**WHEREAS**, the City has prepared a Zoning Map that is consistent with the City's General Plan, as required by state law;

**WHEREAS**, the proposed Zoning Map is also consistent with the provisions of state law requiring the maintenance of aggregate residential capacity at 2018 levels;

**WHEREAS**, the City has a number of parcels developed with apartment buildings but designated for Very Low Density Residential uses on the City's General Plan Land Use diagram;

**WHEREAS**, the City also has approximately 30 parcels of City right-of-way designated for residential; approximately 20 parcels designated for residential that are developed with City facilities; and approximately 30 parcels designated for residential that are developed with houses of worship;

**WHEREAS**, SB 330 (2019), the "Housing Crisis Act of 2019," only allows for the reduction of residential capacity on a parcel if there are other actions processed concurrently that help to maintain residential capacity;

**WHEREAS**, the City has duly noticed each General Plan Amendment in accordance with Government Code Section 65353 and SCCC 18.146.020, by publishing notice of the public hearing in the *Weekly*, a newspaper of general circulation in the City, on May 8, 2024, by mailing notice to each affected property owner as shown on the latest equalized assessment roll, on May 3, 2024, and by mailing notice to each local agency expected to provide essential facilities or services to the affected parcels, including the Valley Water and the Santa Clara Unified School District, on May 3, 2024;

**WHEREAS**, the Council has reviewed the proposed General Plan Amendments;

**WHEREAS**, before acting on the General Plan Amendments associated with the Zoning Code Update, the Council reviewed and considered the potential environmental impacts and determined that as the primary implementation tool of the General Plan, the environmental effects of the proposed Zoning Code Update and associated actions were consistent with 2010-2035 General Plan EIR, as addended, and that the proposed General Plan Amendments did not alter the conclusions of the adopted General Plan EIR, as addended, or create new environmental impacts;

**WHEREAS**, on May 22, 2024, the Planning Commission conducted a duly noticed public hearing to consider the Zoning Code Map, along with associated text and General Plan amendments and Zoning Code cleanup actions, at the conclusion of which, the Planning Commission unanimously recommended that the City Council adopt the proposed General Plan Amendments; and

**WHEREAS**, on July 16, 2024, the City Council conducted a duly noticed public hearing to consider the Zoning Map including the proposed General Plan Amendments, at which time all interested persons were given an opportunity to give testimony and provide evidence in support of and in opposition to the proposed General Plan Amendments.

**NOW THEREFORE, BE IT RESOLVED BY THE CITY OF SANTA CLARA AS FOLLOWS:**

1. That the City Council hereby finds that the above Recitals are true and correct and by this reference makes them a part hereof.


//

2. That City Council adopts the Amendments to the General Plan Land Use Diagram shown in Attachment 1 to ensure consistency between existing residential uses, General Plan land use designations, and proposed zoning districts.

3. Effective date. This resolution shall become effective thirty (30) calendar days after the date of adoption.

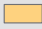

I HEREBY CERTIFY THE FOREGOING TO BE A TRUE COPY OF A RESOLUTION PASSED AND ADOPTED BY THE CITY OF SANTA CLARA, CALIFORNIA, AT A REGULAR MEETING THEREOF HELD ON THE 16<sup>TH</sup> DAY OF JULY, 2024, BY THE FOLLOWING VOTE:

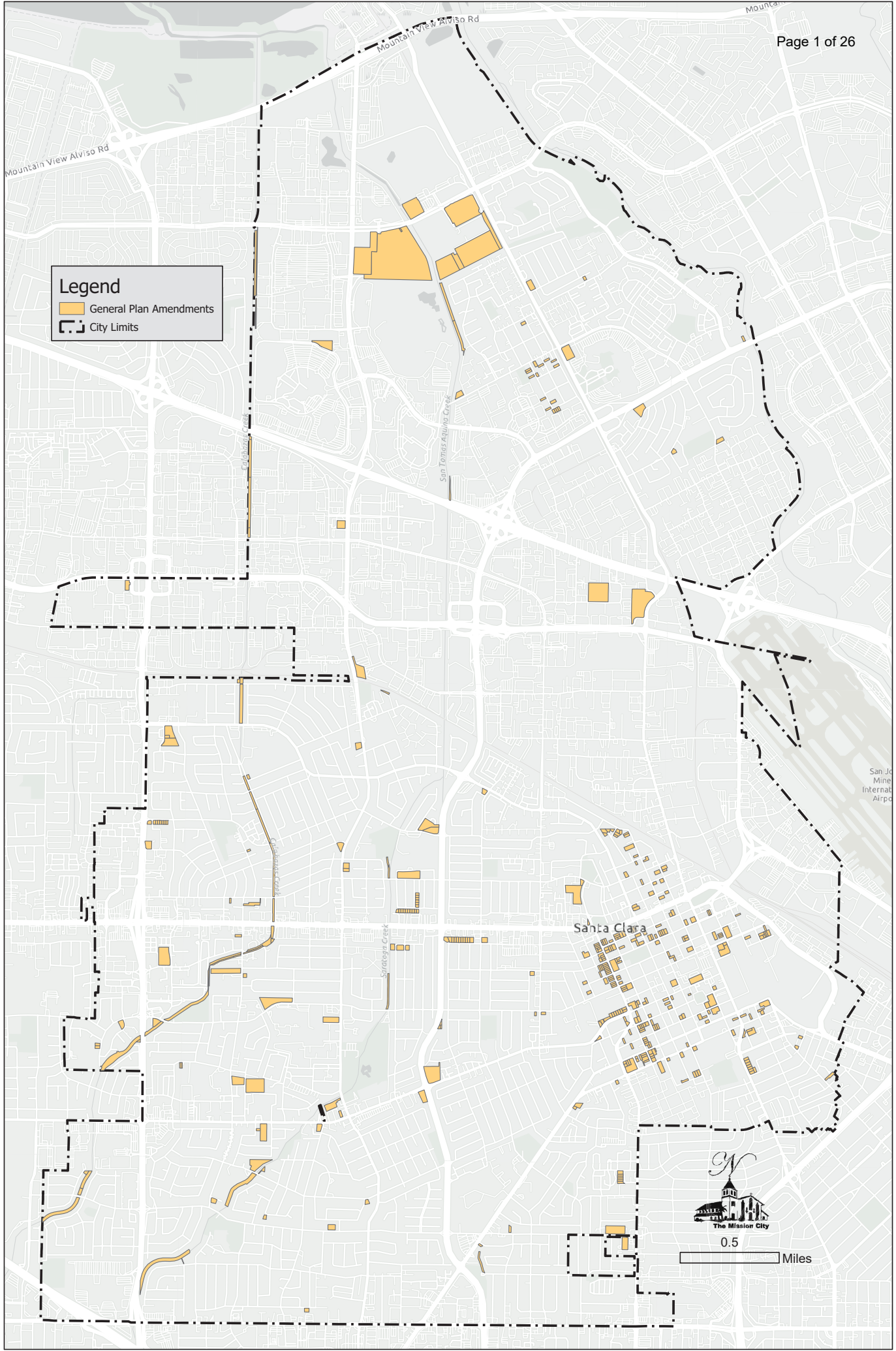
AYES:	COUNCILORS:	Becker, Chahal, Hardy, Jain, Park, and Watanabe
NOES:	COUNCILORS:	None
ABSENT:	COUNCILORS:	Mayor Gillmor
ABSTAINED:	COUNCILORS:	None

ATTEST:   
 \_\_\_\_\_  
 NORA PIMENTEL, MMC  
 ASSISTANT CITY CLERK  
 CITY OF SANTA CLARA

Attachments incorporated by reference:  
 1. General Plan Amendments Map and List

**Legend**

-  General Plan Amendments
-  City Limits



0.5 Miles

<b>Key to Abbreviations</b>		
<b>Abbreviation</b>	<b>Land Use or Map Feature</b>	<b>Density Range (dwelling units/acre) or Intensity (FAR)</b>
VLDR	Very Low Density Residential	Up to 10 DU/AC
LDR	Low Density Residential	10-18 DU/AC
MDR	Medium Density Residential	19-36 DU/AC
CC	Community Commercial	0.5 FAR maximum
RC	Regional Commercial	0.6 FAR maximum
NMXU	Neighborhood Mixed Use	19-36 DU/AC, minimum 0.1 commercial FAR
CMXU	Community Mixed Use	19-36 DU/AC, minimum 0.1 commercial FAR
RMXU	Regional Mixed Use	37-50 DU/AC, minimum 0.15 commercial FAR
LIO/R+D	Low-Intensity Office/R+D	1.0 FAR maximum
HIO/R+D	High-Intensity Office/R+D	2.0 FAR maximum
LI	Light Industrial	0.6 FAR maximum
PQP	Public/Quasi-Public	n/a
ROW	Right of Way	Not a land use designation
Creek	Creek	Not a land use designation

<b>Parcels proposed for redesignation to maintain existing residential densities</b>				
<b>Site Address</b>	<b>APN</b>	<b>Acreage</b>	<b>Current GP</b>	<b>Proposed GP</b>
3575 De La Cruz Boulevard	101-15-049	0.49	VLDR	MDR
4482 Davis Street	104-10-031	0.23	VLDR	MDR
4240 Bassett Street	104-12-006	0.14	VLDR	MDR
4200 Bassett Street	104-12-009	0.22	VLDR	MDR
4261 Davis Street	104-12-016	0.18	VLDR	MDR
4252 Davis Street	104-12-020	0.18	VLDR	MDR
2086 Agnew Road	104-12-028	0.27	VLDR	MDR
4254 Cheeney Street	104-12-031	0.18	VLDR	MDR
4224 Cheeney Street	104-12-034	0.18	VLDR	MDR
4074 Cheeney Street	104-12-047	0.18	VLDR	MDR
1915 Chestnut street	104-12-053	0.17	VLDR	MDR
4035 Cheeney Street	104-12-094	0.27	VLDR	MDR
1860 Chestnut Street	104-12-138	0.13	VLDR	MDR
1840 Chestnut Street	104-12-139	0.13	VLDR	MDR
1880 Chestnut Street	104-12-140	0.13	VLDR	MDR
4203 Cheeney Street	104-12-151	0.14	VLDR	MDR
4264 Cheeney Street	104-12-178	0.18	VLDR	MDR
1900 Chestnut Street	104-12-181	0.15	VLDR	MDR



<b>Parcels proposed for redesignation to maintain existing residential densities</b>				
<b>Site Address</b>	<b>APN</b>	<b>Acreage</b>	<b>Current GP</b>	<b>Proposed GP</b>
2588 Robinson Avenue	216-03-065	0.14	VLDR	MDR
2580 Robinson Avenue	216-03-066	0.14	VLDR	MDR
2576 Robinson Avenue	216-03-067	0.14	VLDR	MDR
2570 Robinson Avenue	216-03-068	0.14	VLDR	MDR
2566 Robinson Avenue	216-03-069	0.14	VLDR	MDR
2560 Robinson Avenue	216-03-070	0.14	VLDR	MDR
2556 Robinson Avenue	216-03-071	0.14	VLDR	MDR
2550 Robinson Avenue	216-03-072	0.14	VLDR	MDR
2546 Robinson Avenue	216-03-073	0.14	VLDR	MDR
2540 Robinson Avenue	216-03-084	0.14	VLDR	MDR
2543 Robinson Avenue	216-04-070	0.15	VLDR	MDR
1733 Higgins Avenue	216-04-071	0.14	VLDR	MDR
1739 Higgins Avenue	216-04-072	0.14	VLDR	MDR
1743 Higgins Avenue	216-04-073	0.14	VLDR	MDR
1749 Higgins Avenue	216-04-074	0.14	VLDR	MDR
1753 Higgins Avenue	216-04-075	0.14	VLDR	MDR
2382 Bowers Avenue	216-17-086	0.59	VLDR	MDR
3360 Warburton Avenue	220-01-002	0.14	VLDR	MDR
3564 Cabrillo Avenue	220-11-019	0.15	PQP	VLDR
3554 Cabrillo Avenue	220-11-020	0.13	PQP	VLDR
3544 Cabrillo Avenue	220-11-021	0.13	PQP	VLDR
3534 Cabrillo Avenue	220-11-022	0.13	PQP	VLDR
3524 Cabrillo Avenue	220-11-023	0.13	PQP	VLDR
3514 Cabrillo Avenue	220-11-024	0.13	PQP	VLDR
3510 Cabrillo Avenue	220-11-025	0.13	PQP	VLDR
3584 Cabrillo Avenue	220-11-029	0.24	PQP	VLDR
1981 Saint Lawrence Drive	220-11-030	0.79	PQP	MDR
2076 Jackson Street	224-22-041	0.14	VLDR	MDR
2052 Jackson Court	224-22-043	0.18	VLDR	MDR
2050 Jackson Court	224-22-044	0.33	VLDR	MDR
2048 Jackson Court	224-22-045	0.17	VLDR	MDR

<b>Parcels proposed for redesignation to maintain existing residential densities</b>				
<b>Site Address</b>	<b>APN</b>	<b>Acreeage</b>	<b>Current GP</b>	<b>Proposed GP</b>
2064 Main Street	224-23-002	0.14	VLDR	MDR
2062 Main Street	224-23-003	0.22	VLDR	MDR
1918 Main Street	224-23-013	0.15	VLDR	MDR
2055 Jackson Street	224-23-034	0.14	VLDR	MDR
2065 Jackson Street	224-23-035	0.24	VLDR	MDR
2085 Jackson Street	224-23-080	0.20	VLDR	MDR
2078 Main Street	224-23-081	0.17	VLDR	MDR
2010 Main Street	224-23-082	0.65	VLDR	MDR
1122 Reed Street	224-24-048	0.11	VLDR	MDR
1231 Warburton Avenue	224-24-059	0.30	VLDR	MDR
1171 Reeve Street	224-24-090	0.17	VLDR	MDR
1565 Monroe Street	224-26-048	0.34	VLDR	MDR
1101 Civic Center Drive	224-26-067	0.32	VLDR	MDR
1270 Civic Center Drive	224-26-069	0.24	VLDR	MDR
1741 Washington Street	224-27-025	0.15	VLDR	MDR
1750 Washington Street	224-27-055	0.32	VLDR	MDR
1757 Washington Street	224-27-058	0.31	VLDR	MDR
1871 Main Street	224-27-089	0.24	VLDR	MDR
1008 Reeve Street	224-28-003	0.24	VLDR	MDR
1000 Civic Center Drive	224-28-033	0.17	VLDR	MDR
1565 Main Street	224-28-040	0.26	VLDR	MDR
1076 Reeve Street	224-28-063	0.17	VLDR	MDR
2300 Monroe Street	224-31-125	0.35	VLDR	MDR
3430 The Alameda	230-07-014	0.13	LDR	MDR
550 Benton Street	230-08-020	0.15	LDR	LDR
567 Franklin Street	230-08-028	0.28	LDR	MDR
575 Franklin Street	230-08-029	0.14	LDR	MDR
581 Franklin Street	230-08-030	0.13	LDR	MDR
583 Franklin Street	230-08-031	0.10	LDR	MDR
1025 Sherman Street	230-08-032	0.21	LDR	MDR
1041 Sherman Street	230-08-033	0.22	LDR	MDR

<b>Parcels proposed for redesignation to maintain existing residential densities</b>				
<b>Site Address</b>	<b>APN</b>	<b>Acreage</b>	<b>Current GP</b>	<b>Proposed GP</b>
533 Mission Street	230-12-082	0.18	VLDR	MDR
593 Mission Street	230-12-083	0.18	VLDR	MDR
2220 Park Avenue	230-17-049	0.41	VLDR	MDR
1442 Lincoln Street	269-02-045	0.13	VLDR	MDR
1438 Lincoln Street	269-02-046	0.13	VLDR	MDR
1430 Lincoln Street	269-02-047	0.15	VLDR	MDR
1420 Lincoln Street	269-02-048	0.10	VLDR	MDR
1404 Lincoln Street	269-02-049	0.17	VLDR	MDR
1380 Lincoln Street	269-02-050	0.26	VLDR	MDR
1366 Lincoln Street	269-02-051	0.12	VLDR	MDR
1346 Lincoln Street	269-02-052	0.12	VLDR	MDR
1310 Lincoln Street	269-02-053	0.12	VLDR	MDR
1645 Harrison Street	269-02-054	0.16	VLDR	MDR
1655 Catherine Street	269-02-069	0.12	VLDR	MDR
1501 Lewis Street	269-03-011	0.13	VLDR	MDR
1559 Lewis Street	269-03-013	0.18	VLDR	MDR
1575 Lewis Street	269-03-014	0.18	VLDR	MDR
1425 Jefferson Street	269-03-024	0.09	VLDR	MDR
1437 Jefferson Street	269-03-025	0.18	VLDR	MDR
1455 Jefferson Street	269-03-026	0.18	VLDR	MDR
1435 Lewis Street	269-03-034	0.26	VLDR	MDR
1441 Lewis Street	269-03-035	0.26	VLDR	MDR
1475 Lewis Street	269-03-036	0.09	VLDR	MDR
1355 Jefferson Street	269-03-047	0.19	VLDR	MDR
1360 Jefferson Street	269-03-055	0.31	VLDR	MDR
1391 Lincoln Street	269-03-057	0.21	VLDR	MDR
1550 Lewis Street	269-03-061	0.18	VLDR	MDR
1591 Lewis Street	269-03-064	0.09	VLDR	MDR
1313 Lewis Street	269-03-070	0.16	VLDR	MDR
1343 Lewis Street	269-03-071	0.17	VLDR	MDR
1359 Lewis Street	269-03-072	0.19	VLDR	MDR



<b>Parcels proposed for redesignation to maintain existing residential densities</b>				
<b>Site Address</b>	<b>APN</b>	<b>Acreage</b>	<b>Current GP</b>	<b>Proposed GP</b>
1290 Lewis Street	269-03-087	0.21	VLDR	MDR
1326 Jackson Street	269-03-095	0.13	VLDR	MDR
1239 Harrison Street	269-03-097	0.18	VLDR	MDR
1259 Harrison Street	269-03-098	0.27	VLDR	MDR
1390 Monroe Street	269-03-103	0.27	VLDR	MDR
1306 Monroe Street	269-03-110	0.25	VLDR	MDR
1357 Harrison Street	269-03-111	0.19	VLDR	MDR
1367 Madison Street	269-03-114	0.25	VLDR	MDR
1451 Lincoln Street	269-03-121	0.06	VLDR	MDR
1591 Lewis Street	269-03-122	0.02	VLDR	MDR
1550 Lewis Street	269-03-137	0.18	VLDR	MDR
1361 Lincoln Street	269-03-138	0.19	VLDR	MDR
1057 Lewis Street	269-05-020	0.16	VLDR	MDR
1135 Harrison Street	269-05-032	0.24	VLDR	MDR
1161 Harrison Street	269-05-033	0.18	VLDR	MDR
1175 Harrison Street	269-05-034	0.17	VLDR	MDR
1189 Harrison Street	269-05-035	0.17	VLDR	MDR
1194 Lewis Street	269-05-038	0.18	VLDR	MDR
1045 Lewis Street	269-05-055	0.27	VLDR	MDR
927 Harrison Street	269-05-074	0.40	VLDR	MDR
1301 Washington Street	269-05-077	0.26	VLDR	MDR
819 Harrison Street	269-06-033	0.13	VLDR	MDR
829 Harrison Street	269-06-034	0.13	VLDR	MDR
1150 Pierce Street	269-11-057	0.22	VLDR	MDR
1208 Pierce Street	269-11-059	0.21	VLDR	MDR
1682 Harrison Street	269-12-008	0.15	VLDR	MDR
1264 Lincoln Street	269-12-011	0.15	VLDR	MDR
1262 Lincoln Street	269-12-012	0.15	VLDR	MDR
1252 Lincoln Street	269-12-013	0.15	VLDR	MDR
1236 Lincoln Street	269-12-014	0.15	VLDR	MDR
1210 Lincoln Street	269-12-016	0.16	VLDR	MDR

<b>Parcels proposed for redesignation to maintain existing residential densities</b>				
<b>Site Address</b>	<b>APN</b>	<b>Acreage</b>	<b>Current GP</b>	<b>Proposed GP</b>
1697 Fremont Street	269-12-020	0.15	VLDR	MDR
1672 Fremont Street	269-12-038	0.30	VLDR	MDR
1194 Lincoln Street	269-12-040	0.15	VLDR	MDR
1176 Lincoln Street	269-12-041	0.15	VLDR	MDR
1156 Lincoln Street	269-12-042	0.15	VLDR	MDR
1136 Lincoln Street	269-12-044	0.15	VLDR	MDR
1126 Lincoln Street	269-12-045	0.15	VLDR	MDR
1110 Lincoln Street	269-12-046	0.15	VLDR	MDR
1678 Harrison Street	269-12-058	0.15	VLDR	MDR
1668 Harrison Street	269-12-059	0.15	VLDR	MDR
1608 Harrison Street	269-12-062	0.14	VLDR	MDR
1226 Lincoln Street	269-12-073	0.15	VLDR	MDR
1540 Harrison Street	269-13-002	0.12	VLDR	MDR
1510 Harrison Street	269-13-003	0.17	VLDR	MDR
1260 Jefferson Street	269-13-005	0.17	VLDR	MDR
1105 Lincoln Street	269-13-025	0.15	VLDR	MDR
1185 Lincoln Street	269-13-028	0.12	VLDR	MDR
1255 Lincoln Street	269-13-050	1.07	VLDR	MDR
1155 Lincoln Street	269-13-072	0.14	VLDR	MDR
1248 Washington Street	269-15-020	0.16	VLDR	MDR
1011 Fremont Street	269-15-021	0.15	VLDR	MDR
1041 Fremont Street	269-15-022	0.15	VLDR	MDR
1161 Benton Street	269-15-038	0.13	VLDR	MDR
1145 Jackson Street	269-15-040	0.17	VLDR	MDR
1124 Washington Street	269-15-053	0.39	VLDR	MDR
1174 Harrison Street	269-15-056	0.02	VLDR	MDR
1194 Fremont Street	269-15-057	0.16	VLDR	MDR
1284 Jackson Street	269-15-067	0.23	VLDR	MDR
846 Fremont Street	269-16-038	0.38	VLDR	MDR
1170 Alviso Street	269-16-043	0.10	VLDR	MDR
1140 Alviso Street	269-16-065	0.11	VLDR	MDR

<b>Parcels proposed for redesignation to maintain existing residential densities</b>				
<b>Site Address</b>	<b>APN</b>	<b>Acreage</b>	<b>Current GP</b>	<b>Proposed GP</b>
1130 Alviso Street	269-16-066	0.11	VLDR	MDR
1650 Homestead Road	269-19-051	0.16	VLDR	MDR
954 Lincoln Street	269-19-058	0.17	PQP	MDR
964 Lincoln Street	269-19-062	0.17	PQP	MDR
1751 Homestead Road	269-19-064	0.27	PQP	VLDR
848 North Winchester Boulevard	269-19-067	0.19	VLDR	MDR
1801 Homestead Road	269-19-068	0.21	PQP	VLDR
1811 Homestead Road	269-19-069	0.22	PQP	VLDR
1651 Homestead Road	269-19-088	0.17	PQP	VLDR
1671 Homestead Road	269-19-089	0.17	PQP	VLDR
1691 Homestead Road	269-19-090	0.17	PQP	VLDR
1701 Homestead Road	269-19-091	0.16	PQP	VLDR
1721 Homestead Road	269-19-092	0.16	PQP	VLDR
1731 Homestead Road	269-19-093	0.19	PQP	VLDR
1076 Jefferson Street	269-20-001	0.54	VLDR	MDR
1057 Lincoln Street	269-20-008	0.17	VLDR	MDR
1075 Lincoln Street	269-20-009	0.17	VLDR	MDR
1093 Lincoln Street	269-20-010	0.18	VLDR	MDR
1527 Homestead Road	269-20-030	0.17	VLDR	MDR
1465 Homestead Road	269-20-045	0.20	VLDR	MDR
1493 Homestead Road	269-20-046	0.15	VLDR	MDR
942 Jefferson Street	269-20-049	0.18	VLDR	MDR
955 Lincoln Street	269-20-054	0.64	VLDR	MDR
1642 Lexington Street	269-25-047	0.16	VLDR	MDR
1659 Santa Clara Street	269-25-073	0.15	VLDR	MDR
1560 Homestead Road	269-26-002	0.18	VLDR	MDR
1567 Lexington Street	269-26-011	0.27	VLDR	MDR
1593 Lexington Street	269-26-012	0.29	VLDR	MDR
1491 Lexington Street	269-26-026	0.16	VLDR	MDR
1576 Lexington Street	269-26-029	0.11	VLDR	MDR
1560 Lexington Street	269-26-030	0.11	VLDR	MDR

<b>Parcels proposed for redesignation to maintain existing residential densities</b>				
<b>Site Address</b>	<b>APN</b>	<b>Acreage</b>	<b>Current GP</b>	<b>Proposed GP</b>
1540 Lexington Street	269-26-031	0.16	VLDR	MDR
786 Jefferson Street	269-26-032	0.21	VLDR	MDR
741 Lincoln Street	269-26-040	0.18	VLDR	MDR
761 Lincoln Street	269-26-041	0.17	VLDR	MDR
1584 Lexington Street	269-26-042	0.15	VLDR	MDR
1457 Santa Clara Street	269-26-053	0.17	VLDR	MDR
1475 Santa Clara Street	269-26-054	0.17	VLDR	MDR
1485 Santa Clara Street	269-26-055	0.18	VLDR	MDR
1490 Lexington Street	269-26-062	0.18	VLDR	MDR
1340 Homestead Road	269-26-067	0.20	VLDR	MDR
856 Monroe Street	269-26-070	0.19	VLDR	MDR
1327 Lexington Street	269-26-072	0.21	VLDR	MDR
1251 Santa Clara Street	269-26-100	0.22	VLDR	MDR
715 Monroe Street	269-26-101	0.18	VLDR	MDR
846 Main Street	269-28-005	0.08	VLDR	MDR
1056 Lexington Street	269-28-050	0.41	VLDR	MDR
1634 Santa Clara Street	269-34-009	0.17	VLDR	MDR
1760 Market Street	269-34-030	0.17	CC	VLDR
1750 Market Street	269-34-031	0.19	CC	VLDR
1640 Market Street	269-34-035	0.17	VLDR	MDR
590 Lincoln Street	269-34-036	0.18	VLDR	MDR
578 Lincoln Street	269-34-037	0.18	VLDR	MDR
560 Lincoln Street	269-34-038	0.45	VLDR	MDR
530 Lincoln Street	269-34-039	0.16	VLDR	MDR
1690 Market Street	269-34-047	0.10	VLDR	MDR
587 Isabella Street	269-34-048	0.12	VLDR	MDR
1784 Market Street	269-34-057	0.12	CC	VLDR
575 North Winchester Boulevard	269-34-058	0.15	CC	VLDR
1555 Market Street	269-35-008	0.17	VLDR	MDR
1567 Market Street	269-35-009	0.10	VLDR	MDR
625 Lincoln Street	269-35-011	0.14	VLDR	MDR

<b>Parcels proposed for redesignation to maintain existing residential densities</b>				
<b>Site Address</b>	<b>APN</b>	<b>Acreage</b>	<b>Current GP</b>	<b>Proposed GP</b>
669 Lincoln Street	269-35-012	0.13	VLDR	MDR
679 Lincoln Street	269-35-013	0.13	VLDR	MDR
689 Lincoln Street	269-35-014	0.14	VLDR	MDR
1550 Market Street	269-35-031	0.31	VLDR	MDR
1591 Bellomy Street	269-35-040	0.25	VLDR	MDR
545 Lincoln Street	269-35-041	0.12	VLDR	MDR
569 Lincoln Street	269-35-042	0.15	VLDR	MDR
589 Lincoln Street	269-35-060	0.27	VLDR	MDR
1307 Bellomy Street	269-36-030	0.13	VLDR	MDR
1156 Santa Clara Street	269-36-058	0.31	VLDR	MDR
660 Main Street	269-36-062	0.15	VLDR	MDR
616 Main Street	269-36-065	0.18	VLDR	MDR
680 Washington Street	269-36-074	0.70	VLDR	MDR
560 Lafayette Street	269-38-044	0.18	VLDR	MDR
841 Bellomy Street	269-38-067	0.16	LDR	MDR
569 Lafayette Street	269-38-074	0.18	LDR	MDR
545 Alviso Street	269-38-084	0.21	LDR	MDR
775 Bellomy Street	269-38-087	0.21	LDR	MDR
1864 Bellomy Street	269-39-076	0.18	VLDR	MDR
561 Saratoga Avenue	269-39-094	0.48	VLDR	MDR
559 Saratoga Avenue	269-39-097	0.15	VLDR	MDR
1550 Bellomy Street	269-40-005	0.76	VLDR	MDR
1490 Bellomy Street	269-41-017	0.14	VLDR	MDR
1301 Jonathan Street	269-41-074	0.23	VLDR	MDR
1321 Jonathan Street	269-41-075	0.22	VLDR	MDR
1341 Jonathan Street	269-41-076	0.22	VLDR	MDR
1398 Bellomy Street	269-41-079	0.26	VLDR	MDR
298 Madison Street	269-41-091	0.22	VLDR	MDR
1284 Bellomy Street	269-42-010	0.26	PQP	VLDR
986 Bellomy Street	269-43-031	0.24	VLDR	MDR
461 Lafayette Way	269-44-033	0.19	VLDR	MDR

<b>Parcels proposed for redesignation to maintain existing residential densities</b>				
<b>Site Address</b>	<b>APN</b>	<b>Acreage</b>	<b>Current GP</b>	<b>Proposed GP</b>
431 Lafayette Way	269-44-105	0.62	VLDR	MDR
961 College Avenue	269-48-069	0.20	VLDR	MDR
231 Washington Street	269-48-070	0.21	VLDR	MDR
235 Washington Street	269-48-071	0.18	VLDR	MDR
241 Washington Street	269-48-072	0.18	VLDR	MDR
245 Washington Street	269-48-073	0.19	VLDR	MDR
251 Washington Street	269-48-074	0.20	VLDR	MDR
255 Washington Street	269-48-075	0.21	VLDR	MDR
261 Washington Street	269-48-076	0.19	VLDR	MDR
1530 Pomeroy Avenue	290-02-097	0.25	VLDR	MDR
2447 Anna Drive	290-08-098	0.19	VLDR	MDR
2453 Anna Drive	290-08-099	0.20	VLDR	MDR
2457 Anna Drive	290-08-100	0.20	VLDR	MDR
2463 Anna Drive	290-08-101	0.20	VLDR	MDR
2467 Anna Drive	290-08-102	0.20	VLDR	MDR
2473 Anna Drive	290-08-103	0.20	VLDR	MDR
2483 Anna Drive	290-08-104	0.20	VLDR	MDR
2487 Anna Drive	290-08-105	0.20	VLDR	MDR
2493 Anna Drive	290-08-106	0.28	VLDR	MDR
2497 Anna Drive	290-08-150	0.34	VLDR	MDR
2431 Anna Drive	290-08-151	0.34	VLDR	MDR
2295 Anna Drive	290-09-040	0.47	VLDR	MDR
1275 Alice Drive	290-11-149	0.28	VLDR	MDR
2550 Arroyo Drive	290-14-230	0.60	VLDR	MDR
2520 Arroyo Drive	290-14-231	0.30	VLDR	MDR
1400 White Drive	290-14-247	0.41	VLDR	MDR
3472 Brookdale Drive	290-23-085	0.13	PQP	LDR
3470 Brookdale Drive	290-23-086	0.13	PQP	LDR
2020 Benton Street	290-35-047	0.13	LDR	MDR
793 Cornell Drive	293-11-053	0.14	VLDR	MDR
3014 McKinley Drive	296-37-028	0.28	VLDR	MDR



<b>Parcels proposed for redesignation to maintain existing residential densities</b>				
<b>Site Address</b>	<b>APN</b>	<b>Acreage</b>	<b>Current GP</b>	<b>Proposed GP</b>
408 Knowles Avenue	303-02-008	0.17	PQP	VLDR
406 Knowles Avenue	303-02-009	0.17	PQP	VLDR
404 Knowles Avenue	303-02-010	0.17	PQP	VLDR
402 Knowles Avenue	303-02-011	0.19	PQP	VLDR
412 Knowles Avenue	303-02-017	0.30	PQP	VLDR
410 Knowles Avenue	303-02-018	0.17	PQP	VLDR
1850 Pruneridge Avenue	303-16-080	1.18	RC	MDR
3743 Benton Street	313-30-030	0.21	PQP	VLDR
3749 Benton Street	313-30-031	0.21	PQP	VLDR
<b>Parcels proposed for redesignation to maintain existing residential densities</b>				
<b>Site Address</b>	<b>APN</b>	<b>Acreage</b>	<b>Current GP</b>	<b>Proposed GP</b>
4474 Davis Street	104-10-032	0.22	VLDR	LDR
2079 Second Street	104-10-073	0.16	VLDR	LDR
4330 Bassett Street	104-11-005	0.15	VLDR	LDR
4250 Bassett Street	104-12-005	0.14	VLDR	LDR
4230 Bassett Street	104-12-007	0.18	VLDR	LDR
4210 Bassett Street	104-12-008	0.18	VLDR	LDR
4251 Davis Street	104-12-015	0.18	VLDR	LDR
4236 Cheeney Street	104-12-033	0.18	VLDR	LDR
4164 Cheeney Street	104-12-039	0.18	VLDR	LDR
4128 Cheeney Street	104-12-043	0.18	VLDR	LDR
4033 Davis Street	104-12-078	0.18	VLDR	LDR
4043 Davis Street	104-12-079	0.18	VLDR	LDR
1802 Beech Street	104-12-084	0.25	VLDR	LDR
4052 Davis Street	104-12-088	0.18	VLDR	LDR
4173 Cheeney Street	104-12-104	0.18	VLDR	LDR
2009 Beech Street	104-12-142	0.18	VLDR	LDR
3990 Bassett Street	104-12-168	0.28	VLDR	LDR
4034 Davis Street	104-12-206	0.18	VLDR	LDR
4042 Davis Street	104-12-207	0.18	VLDR	LDR
1605 Chestnut Street A	104-12-210	0.21	VLDR	LDR

<b>Parcels proposed for redesignation to maintain existing residential densities</b>				
<b>Site Address</b>	<b>APN</b>	<b>Acreage</b>	<b>Current GP</b>	<b>Proposed GP</b>
2570 Warburton Avenue	216-03-051	0.14	VLDR	LDR
1780 Ravizza Avenue	216-03-052	0.13	VLDR	LDR
1776 Ravizza Avenue	216-03-053	0.13	VLDR	LDR
1766 Ravizza Avenue	216-03-054	0.13	VLDR	LDR
1762 Ravizza Avenue	216-03-055	0.13	VLDR	LDR
1756 Ravizza Avenue	216-03-056	0.13	VLDR	LDR
1754 Ravizza Avenue	216-03-057	0.18	VLDR	LDR
1748 Ravizza Avenue	216-03-058	0.16	VLDR	LDR
1744 Ravizza Avenue	216-03-059	0.15	VLDR	LDR
1740 Ravizza Avenue	216-03-060	0.15	VLDR	LDR
1736 Ravizza Avenue	216-03-061	0.15	VLDR	LDR
1728 Ravizza Avenue	216-03-062	0.15	VLDR	LDR
1724 Ravizza Avenue	216-03-063	0.17	VLDR	LDR
2590 Robinson Avenue	216-03-064	0.22	VLDR	LDR
1832 Ravizza Avenue	216-04-084	0.15	VLDR	LDR
1822 Ravizza Avenue	216-04-085	0.15	VLDR	LDR
2591 Warburton Avenue	216-04-086	0.16	VLDR	LDR
1660 Pomeroy Avenue	220-01-008	0.17	VLDR	LDR
3315 Clair Court	220-01-009	0.15	VLDR	LDR
3325 Clair Court	220-01-010	0.14	VLDR	LDR
3335 Clair Court	220-01-011	0.13	VLDR	LDR
3341 Clair Court	220-01-012	0.21	VLDR	LDR
3570 Marquette Street	220-16-001	0.15	VLDR	LDR
2298 Capistrano Drive	220-17-002	0.16	VLDR	LDR
2286 Capistrano Drive	220-17-019	0.14	VLDR	LDR
2278 Capistrano Drive	220-17-020	0.14	VLDR	LDR
2268 Capistrano Drive	220-17-021	0.14	VLDR	LDR
2256 Capistrano Drive	220-17-022	0.14	VLDR	LDR
2248 Capistrano Drive	220-17-023	0.14	VLDR	LDR
2238 Capistrano Drive	220-17-024	0.14	VLDR	LDR
2226 Capistrano Drive	220-17-025	0.16	VLDR	LDR

<b>Parcels proposed for redesignation to maintain existing residential densities</b>				
<b>Site Address</b>	<b>APN</b>	<b>Acreage</b>	<b>Current GP</b>	<b>Proposed GP</b>
1163 Warburton Avenue	224-24-055	0.17	VLDR	LDR
1193 Warburton Avenue	224-24-056	0.40	VLDR	LDR
1685 Jackson Street	224-26-017	0.17	VLDR	LDR
1100 Reeve Street	224-26-020	0.12	VLDR	LDR
1891 Clifford Street	269-01-030	0.20	VLDR	LDR
1894 Clay Street	269-01-031	0.20	VLDR	LDR
1433 Scott Boulevard	269-01-074	0.14	VLDR	LDR
1891 Clay Street	269-01-076	0.26	VLDR	LDR
1515 Scott Boulevard	269-01-077	0.17	VLDR	LDR
1443 Scott Boulevard	269-01-086	0.14	VLDR	LDR
1886 Clifford Street	269-01-087	0.17	VLDR	LDR
1895 Catherine Street	269-01-088	0.26	VLDR	LDR
1791 Catherine Street	269-02-034	0.18	VLDR	LDR
1435 Pierce Street	269-02-036	0.14	VLDR	LDR
1539 Lewis Street	269-03-012	0.18	VLDR	LDR
1440 Jackson Street	269-03-080	0.25	VLDR	LDR
1400 Jackson Street	269-03-081	0.14	VLDR	LDR
1344 Jackson Street	269-03-094	0.11	VLDR	LDR
1011 Lewis Street	269-05-054	0.18	VLDR	LDR
830 Lewis Street	269-06-029	0.17	VLDR	LDR
1384 Alviso Street	269-06-047	0.11	VLDR	LDR
1993 Harrison Street	269-08-001	0.20	VLDR	LDR
1355 Scott Boulevard	269-08-002	0.19	VLDR	LDR
1890 Catherine Street	269-08-003	0.20	VLDR	LDR
1992 Harrison Street	269-08-037	0.21	VLDR	LDR
1995 Stafford Street	269-08-054	0.22	VLDR	LDR
1287 Scott Boulevard	269-08-055	0.18	VLDR	LDR
1816 Harrison Street	269-11-058	0.16	VLDR	LDR
1198 Pierce Street	269-11-063	0.16	VLDR	LDR
1740 Harrison Street	269-12-005	0.15	VLDR	LDR
1703 Fremont Street	269-12-021	0.15	VLDR	LDR

<b>Parcels proposed for redesignation to maintain existing residential densities</b>				
<b>Site Address</b>	<b>APN</b>	<b>Acreage</b>	<b>Current GP</b>	<b>Proposed GP</b>
1160 Fremont Street	269-15-029	0.18	VLDR	LDR
1262 Harrison Street	269-15-065	0.13	VLDR	LDR
1067 Jefferson Street	269-20-023	0.14	VLDR	LDR
1368 Homestead Road	269-26-066	0.18	VLDR	LDR
749 Monroe Street	269-26-102	0.21	VLDR	LDR
1697 Market Street	269-34-021	0.18	VLDR	LDR
1703 Market Street	269-34-023	0.18	VLDR	LDR
1787 Market Street	269-34-046	0.18	VLDR	LDR
1434 Market Street	269-35-045	0.12	VLDR	LDR
560 Madison Street	269-35-047	0.19	VLDR	LDR
1345 Market Street	269-36-008	0.18	VLDR	MDRE
623 Monroe Street	269-36-054	0.19	VLDR	LDR
660 Lafayette Street	269-38-102	0.20	VLDR	LDR
336 Monroe Street	269-41-056	0.18	VLDR	LDR
293 Madison Street	269-41-077	0.20	VLDR	LDR
297 Madison Street	269-41-078	0.18	VLDR	LDR
879 Linden Drive	269-51-022	0.16	VLDR	LDR
885 Linden Drive	269-51-023	0.15	VLDR	LDR
905 Linden Drive	269-51-024	0.15	VLDR	LDR
935 Linden Drive	269-51-025	0.15	VLDR	LDR
967 Linden Drive	269-51-026	0.15	VLDR	LDR
975 Linden Drive	269-51-027	0.15	VLDR	LDR
985 Linden Drive	269-51-028	0.15	VLDR	LDR
95 Washington Street	269-51-029	0.17	VLDR	LDR
1625 Newhall Street	269-51-043	0.16	VLDR	LDR
33 Wistaria Way	269-51-044	0.21	VLDR	LDR
43 Wistaria Way	269-51-045	0.15	VLDR	LDR
53 Wistaria Way	269-51-046	0.14	VLDR	LDR
65 Wistaria Way	269-51-047	0.14	VLDR	LDR
73 Wistaria Way	269-51-048	0.14	VLDR	LDR
85 Wistaria Way	269-51-049	0.17	VLDR	LDR

<b>Parcels proposed for redesignation to maintain existing residential densities</b>				
<b>Site Address</b>	<b>APN</b>	<b>Acreage</b>	<b>Current GP</b>	<b>Proposed GP</b>
872 Linden Drive	269-51-050	0.23	VLDR	LDR
900 Linden Drive	269-51-063	0.18	VLDR	LDR
80 Wistaria Way	269-51-064	0.18	VLDR	LDR
70 Wistaria Way	269-51-065	0.18	VLDR	LDR
60 Wistaria Way	269-51-066	0.18	VLDR	LDR
50 Wistaria Way	269-51-067	0.18	VLDR	LDR
42 Wistaria Way	269-51-068	0.18	VLDR	LDR
1651 Newhall Street	269-51-069	0.21	VLDR	LDR
540 Park Court	269-52-074	0.12	VLDR	LDR
2173 Park Avenue	269-52-075	0.13	VLDR	LDR
1309 Pomeroy Avenue	290-03-014	0.16	VLDR	LDR
2490 Anna Drive	290-08-041	0.19	VLDR	LDR
2482 Anna Drive	290-08-042	0.18	VLDR	LDR
2462 Anna Drive	290-08-061	0.18	VLDR	LDR
2450 Anna Drive	290-08-062	0.18	VLDR	LDR
2432 Anna Drive	290-08-081	0.18	VLDR	LDR
2320 Anna Drive	290-08-082	0.19	VLDR	LDR
1492 Maryann Drive	290-08-149	0.18	VLDR	LDR
1491 Los Padres Boulevard	290-09-010	0.17	VLDR	LDR
2280 Anna Drive	290-09-014	0.16	VLDR	LDR
2261 Harrison Street	290-09-026	0.19	VLDR	LDR
1327 Block Drive	290-09-027	0.17	VLDR	LDR
1347 Block Drive	290-09-028	0.17	VLDR	LDR
1365 Block Drive	290-09-029	0.17	VLDR	LDR
1385 Block Drive	290-09-030	0.17	VLDR	LDR
1407 Block Drive	290-09-031	0.17	VLDR	LDR
1425 Block Drive	290-09-032	0.17	VLDR	LDR
1445 Block Drive	290-09-033	0.17	VLDR	LDR
1465 Block Drive	290-09-034	0.17	VLDR	LDR
2260 Anna Drive	290-09-039	0.19	VLDR	LDR
2275 Anna Drive	290-10-021	0.19	VLDR	LDR

<b>Parcels proposed for redesignation to maintain existing residential densities</b>				
<b>Site Address</b>	<b>APN</b>	<b>Acreage</b>	<b>Current GP</b>	<b>Proposed GP</b>
1213 Alice Drive	290-11-103	0.16	VLDR	LDR
1223 Alice Drive	290-11-144	0.16	VLDR	LDR
1233 Alice Drive	290-11-145	0.16	VLDR	LDR
1245 Alice Drive	290-11-146	0.16	VLDR	LDR
1253 Alice Drive	290-11-147	0.16	VLDR	LDR
1263 Alice Drive	290-11-148	0.16	VLDR	LDR
2502 Arroyo Drive	290-14-005	0.18	VLDR	LDR
2492 Arroyo Drive	290-14-069	0.18	VLDR	LDR
1057 White Drive	290-14-117	0.18	VLDR	LDR
1069 White Drive	290-14-118	0.19	VLDR	LDR
1079 White Drive	290-14-119	0.18	VLDR	LDR
1097 White Drive	290-14-120	0.19	VLDR	LDR
1109 White Drive	290-14-174	0.21	VLDR	LDR
1117 White Drive	290-14-175	0.15	VLDR	LDR
1127 White Drive	290-14-176	0.15	VLDR	LDR
1139 White Drive	290-14-177	0.15	VLDR	LDR
1149 White Drive	290-14-178	0.15	VLDR	LDR
1159 White Drive	290-14-179	0.15	VLDR	LDR
1179 White Drive	290-14-180	0.15	VLDR	LDR
1187 White Drive	290-14-181	0.15	VLDR	LDR
1197 White Drive	290-14-182	0.15	VLDR	LDR
1207 White Drive	290-14-183	0.15	VLDR	LDR
1219 White Drive	290-14-184	0.17	VLDR	LDR
1237 White Drive	290-14-185	0.16	VLDR	LDR
1257 White Drive	290-14-186	0.14	VLDR	LDR
1277 White Drive	290-14-187	0.14	VLDR	LDR
1299 White Drive	290-14-188	0.14	VLDR	LDR
1309 White Drive	290-14-189	0.14	VLDR	LDR
1317 White Drive	290-14-190	0.14	VLDR	LDR
1329 White Drive	290-14-191	0.14	VLDR	LDR
1339 White Drive	290-14-192	0.14	VLDR	LDR



<b>Parcels proposed for redesignation to maintain existing residential densities</b>				
<b>Site Address</b>	<b>APN</b>	<b>Acreage</b>	<b>Current GP</b>	<b>Proposed GP</b>
1349 White Drive	290-14-193	0.14	VLDR	LDR
1357 White Drive	290-14-194	0.14	VLDR	LDR
1367 White Drive	290-14-195	0.14	VLDR	LDR
1370 White Drive	290-14-196	0.15	VLDR	LDR
1360 White Drive	290-14-197	0.14	VLDR	LDR
1350 White Drive	290-14-198	0.14	VLDR	LDR
1342 White Drive	290-14-199	0.14	VLDR	LDR
1332 White Drive	290-14-200	0.14	VLDR	LDR
1322 White Drive	290-14-201	0.14	VLDR	LDR
1312 White Drive	290-14-202	0.14	VLDR	LDR
1302 White Drive	290-14-203	0.14	VLDR	LDR
1280 White Drive	290-14-204	0.14	VLDR	LDR
1260 White Drive	290-14-205	0.14	VLDR	LDR
1242 White Drive	290-14-206	0.14	VLDR	LDR
1230 White Drive	290-14-207	0.14	VLDR	LDR
1220 White Drive	290-14-208	0.14	VLDR	LDR
1210 White Drive	290-14-209	0.14	VLDR	LDR
1200 White Drive	290-14-210	0.14	VLDR	LDR
1192 White Drive	290-14-211	0.14	VLDR	LDR
1182 White Drive	290-14-212	0.14	VLDR	LDR
1170 White Drive	290-14-213	0.14	VLDR	LDR
1160 White Drive	290-14-214	0.14	VLDR	LDR
1152 White Drive	290-14-215	0.14	VLDR	LDR
1140 White Drive	290-14-216	0.14	VLDR	LDR
1130 White Drive	290-14-217	0.14	VLDR	LDR
1120 White Drive	290-14-218	0.15	VLDR	LDR
2586 Benton Street	290-14-222	0.19	VLDR	LDR
1090 White Drive	290-14-223	0.23	VLDR	LDR
1070 White Drive	290-14-224	0.19	VLDR	LDR
1060 White Drive	290-14-225	0.18	VLDR	LDR
1050 White Drive	290-14-226	0.16	VLDR	LDR

<b>Parcels proposed for redesignation to maintain existing residential densities</b>				
<b>Site Address</b>	<b>APN</b>	<b>Acreage</b>	<b>Current GP</b>	<b>Proposed GP</b>
1110 White Drive	290-14-236	0.19	VLDR	LDR
1112 Kiely Boulevard	290-18-049	0.18	VLDR	LDR
2821 Benton Street	290-18-050	0.15	VLDR	LDR
2831 Benton Street	290-18-051	0.15	VLDR	LDR
2841 Benton Street	290-18-052	0.15	VLDR	LDR
2853 Benton Street	290-18-053	0.15	VLDR	LDR
2861 Benton Street	290-18-054	0.15	VLDR	LDR
2873 Benton Street	290-18-055	0.15	VLDR	LDR
2883 Benton Street	290-18-056	0.18	VLDR	LDR
2891 Benton Street	290-18-057	0.18	VLDR	LDR
2903 Benton Street	290-18-058	0.18	VLDR	LDR
2913 Benton Street	290-18-059	0.18	VLDR	LDR
2921 Benton Street	290-18-060	0.18	VLDR	LDR
2933 Benton Street	290-18-061	0.18	VLDR	LDR
2943 Benton Street	290-18-062	0.18	VLDR	LDR
2953 Benton Street	290-18-063	0.18	VLDR	LDR
2963 Benton Street	290-18-064	0.18	VLDR	LDR
2971 Benton Street	290-18-065	0.18	VLDR	LDR
1101 Moraga Street	290-18-066	0.18	VLDR	LDR
2395 Patricia Drive	290-32-037	0.18	VLDR	LDR
1297 Block Drive	290-42-001	0.18	VLDR	LDR
2252 Harrison Street	290-42-002	0.16	VLDR	LDR
2228 Harrison Street	290-42-003	0.16	VLDR	LDR
2220 Harrison Street	290-42-004	0.16	VLDR	LDR
2210 Harrison Street	290-42-005	0.16	VLDR	LDR
2198 Harrison Street	290-42-006	0.16	VLDR	LDR
2188 Harrison Street	290-42-007	0.16	VLDR	LDR
2178 Harrison Street	290-42-008	0.16	VLDR	LDR
2160 Harrison Street	290-42-009	0.16	VLDR	LDR
2150 Harrison Street	290-42-010	0.16	VLDR	LDR
2140 Harrison Street	290-42-011	0.16	VLDR	LDR

<b>Parcels proposed for redesignation to maintain existing residential densities</b>				
<b>Site Address</b>	<b>APN</b>	<b>Acreage</b>	<b>Current GP</b>	<b>Proposed GP</b>
2128 Harrison Street	290-42-012	0.16	VLDR	LDR
2110 Harrison Street	290-42-013	0.16	VLDR	LDR
2100 Harrison Street	290-42-014	0.16	VLDR	LDR
2088 Harrison Street	290-42-015	0.17	VLDR	LDR
2078 Harrison Street	290-42-016	0.19	VLDR	LDR
3417 Brookdale Drive	290-44-130	0.22	VLDR	LDR
3433 Brookdale Drive	290-52-023	0.19	VLDR	LDR
3441 Brookdale Drive	290-52-024	0.18	VLDR	LDR
3451 Brookdale Drive	290-52-025	0.18	VLDR	LDR
3463 Brookdale Drive	290-52-026	0.18	VLDR	LDR
3473 Brookdale Drive	290-52-027	0.18	VLDR	LDR
3551 Eden Drive	293-05-016	0.17	VLDR	LDR
3556 Dominican Drive	293-05-019	0.15	VLDR	LDR
767 Los Padres Boulevard	294-16-010	0.17	VLDR	LDR
290 Calvert Drive	296-01-005	0.16	VLDR	LDR
294 Calvert Drive	296-01-006	0.17	VLDR	LDR
373 Harvard Avenue	296-03-053	0.19	VLDR	LDR
383 Harvard Avenue	296-03-054	0.18	VLDR	LDR
393 Harvard Avenue	296-03-055	0.18	VLDR	LDR
3366 Pruneridge Avenue	296-05-048	0.26	VLDR	LDR
3362 Pruneridge Avenue	296-05-052	0.28	VLDR	LDR
3107 McKinley Drive	296-12-032	0.20	VLDR	LDR
3109 McKinley Drive	296-12-033	0.18	VLDR	LDR
3113 McKinley Drive	296-12-034	0.18	VLDR	LDR
3119 McKinley Drive	296-12-035	0.18	VLDR	LDR
3123 McKinley Drive	296-12-036	0.18	VLDR	LDR
3125 McKinley Drive	296-12-037	0.18	VLDR	LDR
79 Gilbert Avenue	296-12-038	0.20	VLDR	LDR
3223 McKinley Drive	296-13-052	0.17	VLDR	LDR
3245 McKinley Drive	296-13-053	0.22	VLDR	LDR
64 Cronin Drive	296-14-017	0.22	VLDR	LDR

<b>Parcels proposed for redesignation to maintain existing residential densities</b>				
<b>Site Address</b>	<b>APN</b>	<b>Acreage</b>	<b>Current GP</b>	<b>Proposed GP</b>
65 Arcadia Avenue	296-14-018	0.19	VLDR	LDR
64 Arcadia Avenue	296-14-051	0.21	VLDR	LDR
57 Muir Avenue	296-14-052	0.20	VLDR	LDR
48 Muir Avenue	296-15-019	0.17	VLDR	LDR
83 Cabot Avenue	296-17-003	0.17	VLDR	LDR
3490 Bennett Avenue	296-17-004	0.18	VLDR	LDR
3513 Bennett Avenue	296-18-021	0.16	VLDR	LDR
3525 Bennett Avenue	296-18-022	0.16	VLDR	LDR
3529 Bennett Avenue	296-18-023	0.16	VLDR	LDR
3535 Bennett Avenue	296-18-024	0.16	VLDR	LDR
3543 Bennett Avenue	296-18-025	0.16	VLDR	LDR
3555 Bennett Avenue	296-18-026	0.16	VLDR	LDR
3563 Bennett Avenue	296-18-027	0.16	VLDR	LDR
3575 Bennett Avenue	296-18-028	0.16	VLDR	LDR
3583 Bennett Avenue	296-18-029	0.16	VLDR	LDR
3582 Mauricia Avenue	296-18-030	0.18	VLDR	LDR
3579 Mauricia Avenue	296-18-031	0.18	VLDR	LDR
3583 Mauricia Avenue	296-18-032	0.18	VLDR	LDR
3587 Mauricia Avenue	296-18-033	0.18	VLDR	LDR
3593 Mauricia Avenue	296-18-034	0.18	VLDR	LDR
3590 Mauricia Avenue	296-18-035	0.18	VLDR	LDR
3582 Bennett Avenue	296-18-036	0.16	VLDR	LDR
3570 Bennett Avenue	296-18-037	0.16	VLDR	LDR
3562 Bennett Avenue	296-18-038	0.16	VLDR	LDR
3550 Bennett Avenue	296-18-039	0.16	VLDR	LDR
3542 Bennett Avenue	296-18-040	0.16	VLDR	LDR
3530 Bennett Avenue	296-18-041	0.16	VLDR	LDR
3526 Bennett Avenue	296-18-042	0.16	VLDR	LDR
3522 Bennett Avenue	296-18-043	0.16	VLDR	LDR
3510 Bennett Avenue	296-18-044	0.16	VLDR	LDR
92 Cabot Avenue	296-18-045	0.18	VLDR	LDR

<b>Parcels proposed for redesignation to maintain existing residential densities</b>				
<b>Site Address</b>	<b>APN</b>	<b>Acreage</b>	<b>Current GP</b>	<b>Proposed GP</b>
3130 McKinley Drive	296-21-021	0.17	VLDR	LDR
3126 McKinley Drive	296-21-022	0.17	VLDR	LDR
3122 McKinley Drive	296-21-023	0.16	VLDR	LDR

<b>Parcels with Public/Quasi-Public Uses to be redesignated</b>				
<b>Site Address</b>	<b>APN</b>	<b>Acreage</b>	<b>Current GP</b>	<b>Proposed GP</b>
449 Montague Expressway	097-08-112	0.19	NMXU	PQP
4305 Lafayette Street	097-08-113	1.93	HIO/R+D	PQP
4601 Eisenhower Drive	097-17-126	0.90	MDR	PQP
City Land - no address	097-18-002	0.17	VLDR	PQP
802 Laurie Avenue	101-08-009	0.30	VLDR	PQP
921 Clyde Avenue	101-20-007	1.33	MDR	PQP
2525 Tasman Drive	104-03-040	4.46	RC	PQP
2900 Mission College Boulevard	104-16-110	1.92	LI	PQP
2375 Agmew Rd	104-34-052	0.64	LDR	PQP
SCC Transit	104-43-038	0.07	RC	PQP
4801 Great America Parkway	104-43-051	9.81	RC	PQP
2600 Tasman Drive	104-43-052	40.22	RC	PQP
5000 Stars and Stripes Drive	104-43-058	2.14	RC	PQP
City Land - no address	104-43-059	13.83	RC	PQP
4851 Marie P Debartolo Way	104-43-060	1.45	RC	PQP
City Land - no address	104-43-061	5.98	RC	PQP
3050 Semiconductor Drive	205-39-024	0.67	MDR	PQP
2545 Warburton Avenue	216-04-090	2.59	VLDR	PQP
1819 Bowers Avenue	216-06-040	0.31	VLDR	PQP
1821 Bowers Avenue	216-06-041	0.52	VLDR	PQP
City Land - no address	216-06-074	0.21	VLDR	PQP
2445 Cabrillo Avenue	216-10-003	1.23	VLDR	PQP
2495 Cabrillo Avenue	216-10-098	1.93	VLDR	PQP
3301 Agate Drive	216-26-001	0.16	MDR	PQP

<b>Parcels with Public/Quasi-Public Uses to be redesignated</b>				
<b>Site Address</b>	<b>APN</b>	<b>Acreeage</b>	<b>Current GP</b>	<b>Proposed GP</b>
2747 Bowers Avenue	216-28-062	1.96	LI	PQP
City Land - no address	216-31-032	1.03	RC	PQP
1685 Pomeroy Avenue	220-01-022	0.75	VLDR	PQP
1935 Townsend Avenue	220-08-013	0.11	MDR	PQP
2383 Pacific Drive	220-18-038	1.72	VLDR	PQP
2415 Pacific Drive	220-18-050	0.23	VLDR	PQP
3536 Monroe Street	220-18-051	1.52	MDR	PQP
2263 Calabazas Boulevard	220-22-028	0.17	VLDR	PQP
1912 Bowers Avenue	220-30-012	0.61	VLDR	PQP
1255 Space Park Drive	224-08-082	6.08	LI	PQP
2970 Lafayette Street	224-08-153	7.72	LI	PQP
City Land - no address	224-49-004	0.26	MDR	PQP
1700 Lincoln Street	224-49-005	3.28	MDR	PQP
City Land - no address	224-49-011	0.12	CMXU	PQP
3260 The Alameda	230-08-016	0.23	LDR	PQP
1755 Catherine Street	269-02-037	0.54	VLDR	PQP
1590 El Camino Real	269-03-132	0.04	CMXU	PQP
1177 Alviso Street	269-16-080	1.04	NMXU	PQP
1087 Scott Boulevard	269-18-021	0.19	VLDR	PQP
1798 Homestead	269-18-043	0.20	VLDR	PQP
1095 Homestead Road	269-22-094	1.26	CMXU	PQP
1200 Franklin Mall	269-22-112	0.58	CMXU	PQP
820 Benton Street	269-23-077	0.56	CMXU	PQP
807 Franklin Street	269-23-081	1.17	CMXU	PQP
1072 Alviso Street	269-23-082	0.17	CMXU	PQP
1298 Homestead Road	269-26-079	0.13	CMXU	PQP
750 Washington Street	269-28-051	1.20	VLDR	PQP
1717 Bellomy Street	269-34-054	1.52	CC	PQP
1540 Market Street	269-35-032	0.06	VLDR	PQP
1092 Santa Clara Street	269-36-072	0.13	VLDR	PQP
2795 The Alameda	269-38-108	0.80	NMXU	PQP



<b>Parcels with Public/Quasi-Public Uses to be redesignated</b>				
<b>Site Address</b>	<b>APN</b>	<b>Acreage</b>	<b>Current GP</b>	<b>Proposed GP</b>
475 Lafayette Drive	269-43-039	0.21	VLDR	PQP
3665 Flora Vista Avenue	290-01-123	3.17	CMXU	PQP
1265 Pomeroy Avenue	290-19-101	0.22	VLDR	PQP
1290 Pomeroy Avenue	290-20-061	2.31	MDR	PQP
3550 Benton Street	290-22-153	0.69	VLDR	PQP
887 Pomeroy Avenue	290-23-054	1.53	MDR	PQP
875 Quince Avenue	290-24-045	4.00	VLDR	PQP
3111 Benton Street	290-27-006	3.15	VLDR	PQP
1050 Kiely Boulevard	290-27-013	1.41	MDR	PQP
1005 San Tomas Expressway	290-32-018	0.11	VLDR	PQP
951 San Tomas Expressway	290-37-005	0.10	MDR	PQP
City Land - no address	290-37-006	0.09	MDR	PQP
2499 Homestead Road	290-37-058	3.76	MDR	PQP
2821 Homestead Road	290-39-004	0.26	MDR	PQP
2831 Homestead Road	290-39-064	1.36	MDR	PQP
575 Pomeroy Avenue	293-09-005	0.41	VLDR	PQP
3090 Homestead Road	293-11-057	1.81	VLDR	PQP
3137 Forbes Avenue	293-13-002	2.24	VLDR	PQP
3095 Forbes Avenue	293-16-056	0.21	VLDR	PQP
2900 Homestead Road	293-17-085	0.56	MDR	PQP
3094 Aspen Drive	293-20-001	0.21	VLDR	PQP
2911 Pruneridge Avenue	293-21-022	0.64	VLDR	PQP
511 Magnolia Lane	293-28-036	0.28	VLDR	PQP
2526 Homestead Road	294-19-054	1.08	VLDR	PQP
1957 Pruneridge Avenue	303-03-025	2.54	VLDR	PQP
2323 Pruneridge Avenue	303-11-059	0.25	VLDR	PQP
City Land - no address	303-12-090	0.57	VLDR	PQP
City Land - no address	303-12-093	0.11	MDR	PQP
3700 Benton Street	313-19-014	0.58	MDR	PQP
City Land - no address	313-31-002	0.11	VLDR	PQP
657 Hubbard Avenue	316-08-014	0.19	VLDR	PQP

<b>Parcels with Public/Quasi-Public Uses to be redesignated</b>				
<b>Site Address</b>	<b>APN</b>	<b>Acreage</b>	<b>Current GP</b>	<b>Proposed GP</b>
5050 Stars and Stripes Drive	104-43-062	10.87	RC	POS

<b>Right-of-Way Parcels to be redesignated</b>				
<b>Site Address</b>	<b>APN</b>	<b>Acreage</b>	<b>Current GP</b>	<b>Proposed Designation</b>
Trail ROW	104-04-087	0.38	LI	POS
Trail ROW	104-04-104	0.87	LIO/R+D	POS
Trail ROW	104-05-122	1.48	VLDR	POS
Trail ROW	104-39-022	0.39	HIO/R+D	POS
Trail ROW	104-45-014	1.21	VLDR	POS
Creek Channel	216-06-073	0.28	VLDR	Creek
Creek Channel	216-24-103	0.29	VLDR	Creek
Creek Channel	216-24-104	1.94	VLDR	Creek
Creek Channel	216-30-030	0.11	LIO/R+D	Creek
Creek Channel	216-30-034	1.40	LIO/R+D	Creek
Creek Channel	216-31-054	0.36	LIO/R+D	Creek
Creek Channel	216-31-064	1.91	LIO/R+D	Creek
Creek Channel	220-01-042	0.66	VLDR	Creek
Creek Channel	220-07-134	0.84	VLDR	Creek
Creek Channel	220-08-017	1.07	VLDR	Creek
Creek Channel	220-13-102	0.56	VLDR	Creek
Creek Channel	220-14-035	0.45	VLDR	Creek
Creek Channel	220-28-023	0.78	VLDR	Creek
Creek Channel	290-02-080	0.98	MDR	Creek
Creek Channel	290-03-037	0.38	MDR	Creek
ROW	290-03-065	1.09	MDR	ROW
ROW	290-04-022	0.14	MDR	ROW
ROW	290-04-039	0.49	CMXU	ROW
Creek Channel	290-15-001	0.85	VLDR	Creek
Creek Channel	290-20-001	0.14	MDR	Creek
Creek Channel	290-20-003	0.44	MDR	Creek
Creek Channel	290-22-155	0.90	VLDR	Creek
Creek Channel	290-58-025	2.45	MDR	Creek
Creek Channel	290-58-026	0.19	MDR	Creek
Creek Channel	293-09-017	2.62	VLDR	Creek
Creek Channel	296-06-032	3.59	VLDR	Creek
Creek Channel	313-31-006	3.65	VLDR	Creek
Creek Channel	316-08-004	0.34	VLDR	Creek
Creek Channel	316-08-082	0.97	VLDR	Creek
Creek Channel	316-12-099	2.23	VLDR	Creek
Creek Channel	296-05-050	0.02	VLDR	Creek
Southern Pacific - no address	216-28-124	0.17	MDR	ROW