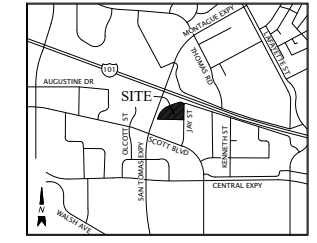
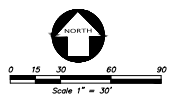


**LEGEND**

[Symbol]	ARBITER'S RIGHTS RELINQUISHED
[Symbol]	BACKING LINE
[Symbol]	CENTER LINE
[Symbol]	CONCRETE BLOCK WALL
[Symbol]	CONCRETE CURB
[Symbol]	CONCRETE CURB & GUTTER
[Symbol]	CONTOUR LINE-MAJOR
[Symbol]	CONTOUR LINE-MINOR
[Symbol]	DRIVEWAY
[Symbol]	EASEMENT LINE
[Symbol]	EDGE OF PAVEMENT
[Symbol]	ELECTRIC LINE
[Symbol]	FEMA FLOOD ZONE BOUNDARY
[Symbol]	FENCE LINE
[Symbol]	FIBER OPTIC LINE
[Symbol]	GAS LINE-VALVE & METER
[Symbol]	LOT LINE
[Symbol]	MONUMENT/ANUMENT LINE
[Symbol]	POWDER LINE
[Symbol]	UTILITY LINE
[Symbol]	SANITARY SEWER LINE-MANHOLE & CLEANOUT
[Symbol]	SOFTENING
[Symbol]	SPOT ELEVATION
[Symbol]	STORM DRAIN LINE-MANHOLE & CATCH BASIN
[Symbol]	STREET LIGHT CONDUIT LINE
[Symbol]	TELEPHONE LINE
[Symbol]	CABLE TELEVISION LINE
[Symbol]	WATER LINE & VALVE
[Symbol]	ACCESSIBLE PARKING SYMBOL
[Symbol]	BACKFLOW PREVENTION DEVICE
[Symbol]	DOUBLE DETECTOR CHECK VALVE
[Symbol]	ELECTRIC VEHICLE CHARGER
[Symbol]	ELECTRICIAN
[Symbol]	FIRE DEPARTMENT CONNECTION
[Symbol]	FIRE HYDRANT
[Symbol]	GAS METER
[Symbol]	POST INDICATOR VANE
[Symbol]	POWER POLE/JOINT POLE
[Symbol]	TRANSFORMER
[Symbol]	TRAFFIC SIGNAL POLE
[Symbol]	TRAFFIC SIGN
[Symbol]	TREE
[Symbol]	UTILITY BOX
[Symbol]	WALK-ROLLUP LIGHT
[Symbol]	WATER VALVE

**ABBREVIATIONS**

(R)	RADIAL
AC	ASPHALTIC CONCRETE
BFP	BACK FLOW PREVENTER
BL	BUILDING LINE
BRC	BACK OF ROLLED CURB
CAB	CABINET
CB	CATCH BASIN
CO	CLEAN OUT
CONC	CONCRETE
DI	DROP INLET
EB	ELECTRIC BOX
EMH	ELECTRICAL MANHOLE
EP	EDGE OF PAVEMENT
EV	ELECTRIC VALVE
FC	FACE OF CURB
FF	FINISH FLOOR
FNC	FENCE
FND	FOUND
LT	LIGHT
MON	MONUMENT
O.R.	OFFICIAL RECORD
P.U.E.	PUBLIC UTILITY EASEMENT
PED	PEDESTAL
PL	PROPERTY LINE
S.D.E.	STORM DRAIN EASEMENT
SL	STREET LIGHT
SQ. FT.	SQUARE FEET
SMH	SANITARY SEWER MANHOLE
TB	TELEPHONE BOX
TE	TRASH ENCLOSURE
TMH	TELEPHONE MANHOLE
TRN	TRANSFORMER
TSE	TRAFFIC SIGNAL BOX
U.G.E.E.	UNDERGROUND ELECTRICAL EASEMENT
WB	WATER BOX
W.U.E.	WATER UTILITY EASEMENT
WM	WATER METER

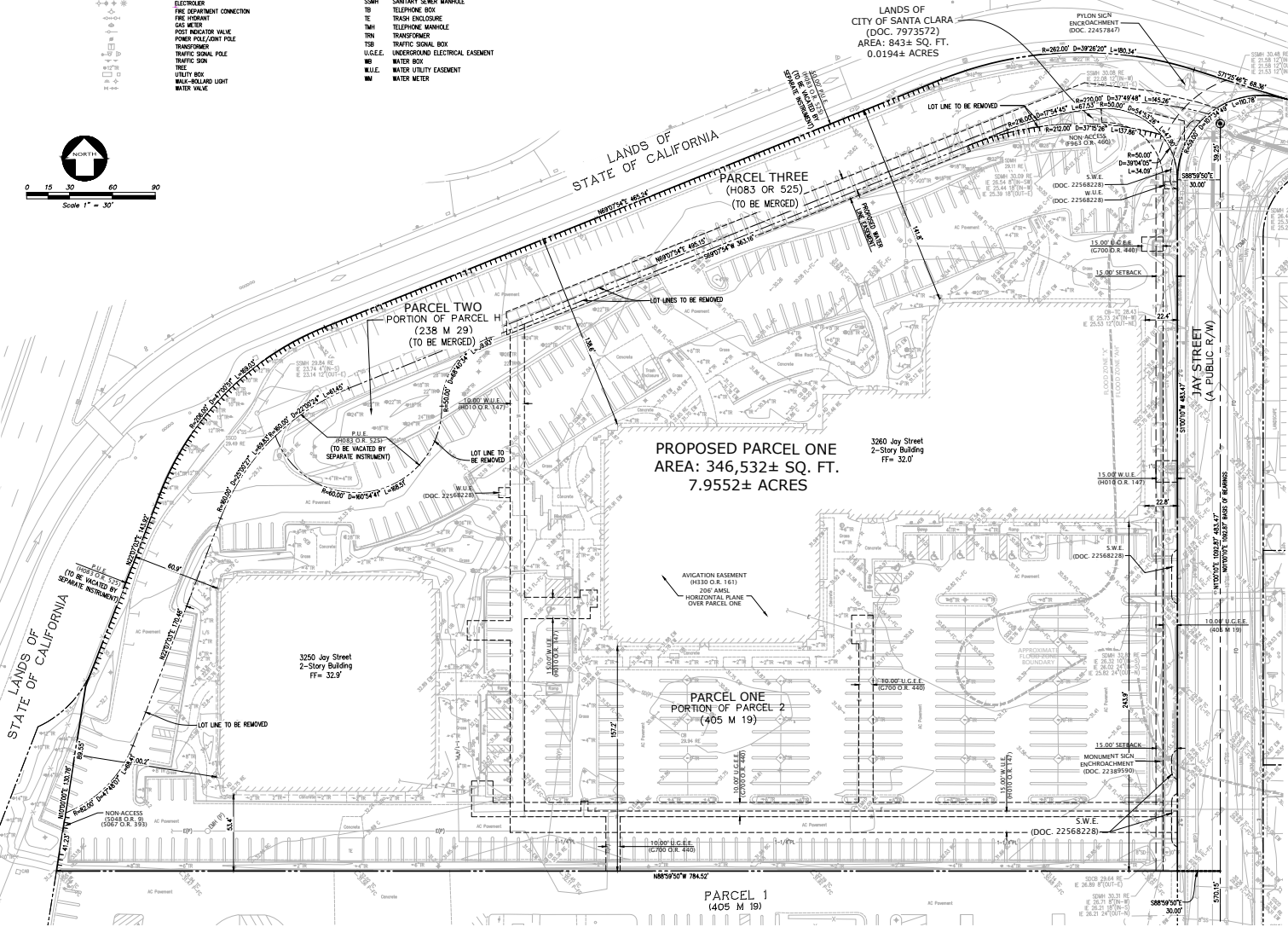


VICINITY MAP  
NOT TO SCALE

**PROJECT DATA**

- OWNER/DEVELOPER:**  
3250 JAY STREET OWNER, LLC  
ATTN: DAVID CROWNER  
345 S. SAN ANTONIO ROAD  
LOS ALTO, CA 94024  
PHONE: (650) 400-4003
- CIVIL ENGINEER:**  
KIER & WRIGHT CIVIL ENGINEERS & SURVYORS, INC.  
ATTN: CHRISTIAN BELL  
1350 SCOTT ROAD, BUILDING 22  
SANTA CLARA, CA 95054  
PHONE: (408) 727-0665
- APR: 224-09-171 and 224-09-178
  - EXISTING USE: COMMERCIAL
  - PROPOSED USE: COMMERCIAL
  - EXISTING ZONING: "M1", LIGHT INDUSTRIAL ZONING DISTRICT.
  - EXISTING NUMBER OF LOTS: 4
  - PROPOSED NUMBER OF LOTS: 1
  - TOTAL ACREAGE: 346,532± SQUARE FEET OR 7.9552± ACRES  
AREA TO BE ACQUIRED: 842± SQUARE FEET OR 0.0194± ACRES
  - ALL DISTANCES ARE GIVEN IN FEET AND DECIMALS THEREOF.
  - THERE ARE NO NEW PUBLIC STREET NAMES PROPOSED.
  - THIS PLAN WAS PREPARED FROM INFORMATION FURNISHED IN A POLICY FOR TITLE INSURANCE, PREPARED BY CHICAGO TITLE COMPANY, DATED JANUARY 30, NUMBER 3620737-362-1E4-J (UPDATE 03-10). LIABILITY IS ASSUMED FOR MATTERS OF RECORD NOT STATED IN SAID PRELIMINARY TITLE REPORT THAT MAY AFFECT THE TITLE LINES, OR EXCEPTIONS OR EASEMENTS OF THE PROPERTY.
  - THE SUBJECT PROPERTY IS SHOWN ON THE FEDERAL EMERGENCY MANAGEMENT AGENCY (FEMA) FLOOD INSURANCE RATE MAP (FIRM) FOR SANTA CLARA COUNTY, CALIFORNIA, MAP NUMBER 060300049 FOR COMMUNITY NUMBER 060300 (CITY OF SANTA CLARA), WITH AN EFFECTIVE DATE OF MAY 16, 2000, AS BEING LOCATED IN FLOOD ZONE "M" (EL. 20) AND FLOOD ZONE "X" (SHADED).

- ACCORDING TO FEMA THE DEFINITION OF ZONE "M" IS: FLOOD DEPTHS OF 1 TO 3 FEET (USUALLY AREAS OF FLOODING; BASE FLOOD ELEVATIONS DETERMINED).
- ACCORDING TO FEMA THE DEFINITION OF ZONE "X" (SHADED) IS: AREAS OF 0.5 ANNUAL CHANCE FLOOD; AREAS OF THE ANNUAL CHANCE FLOOD WITH AVERAGE DEPTHS OF LESS THAN 1 FOOT OR WITH DRAINAGE AREAS LESS THAN 1 SQUARE MILE; AND AREAS DEPTHS BY LIVES FROM THE ANNUAL CHANCE FLOOD.
12. FEMA BASE FLOOD ELEVATIONS ARE BASED ON NAVD83 DATUM.
13. SIGNMARK: 8'-7" 1000 DUNNIE AVE., 2" BRASS DISK IN NW CORNER OF A 10'x46.5' STORM DRAIN CONCRETE STRUCTURE (RESET 2021)  
ELEVATION: 22.83 FEET (NAVD83)
14. BASIS OF BEARING:  
THE BEARING OF NORTH 01° 07' 00" EAST TAKEN ON THE CENTER LINE OF JAY STREET AS SHOWN ON THIS DESIGN PLAN WAS FILED FOR RECORD IN OCTOBER 4, 1977, IN BOOK 489 OF MAPS AT PAGE 18, OFFICIAL RECORDS OF SANTA CLARA COUNTY WAS TAKEN AS THE BASIS FOR ALL BEARINGS SHOWN HEREON.



**VESTING TENTATIVE MAP NO. 3250 AND 3260 JAY STREET FOR FOUR CORNERS PROPERTIES**

DATE	MAY, 2026
SCALE	
SURVEYOR	RMA
DRAWN BY	DPH
JOB NO.	A24299-2
SHEET	1



PREPARED BY OR UNDER THE SUPERVISION OF  
RYAN W. AMARA, P.E., RMA  
RMA@KIERWRIGHT.COM

DATE: 3/24/26

2: 02/24/2025 2:09pm Santa Clara County\TENTATIVE MAP\A24299-2-78.dwg 3-24-26 02:26:17 PM dphamman