



Parks & Recreation Commission

**Preferred Park Master Plan and
Schematic Design Consideration
for Henry Schmidt Park and
Playground Rehabilitation Project
Project Presentation**

23-1366

November 21, 2023



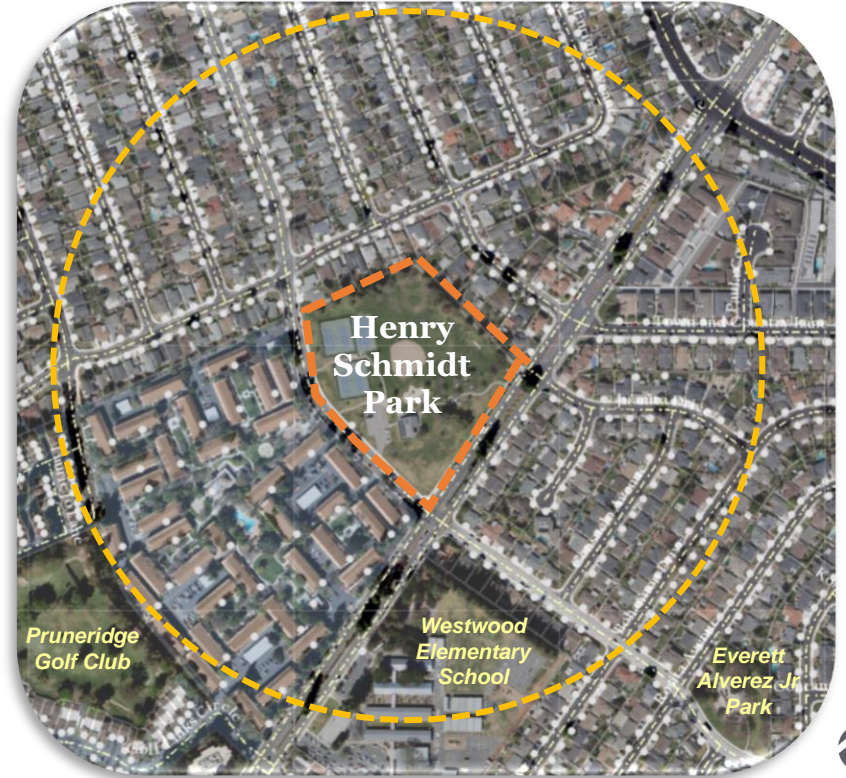
Purpose of Presentation

- Review Community Input to date
 - Pop-up Events
 - On-line survey
- Introduce Henry Schmidt Park Master Plan Update
- Introduce Playground Design Options 1 and 2
- Receive Commission and Community Input
- Make recommendation to Council for approval.



Background

- September 2013 – Council Goal: Enhance community sports & recreational and arts assets.
- January 2018 – Facility Condition Assessment Report
- February 2023– Gates + Associates Design Contract
- April 2023 – Project kick-off
- July 18, 2023 – 1st PRC Meeting
- July 19 to August 14, 2023 – Online Survey
- August 4 & 11, 2023 – Pop-up Events
- November 21, 2023 – 2nd PRC Meeting
- TBD – Council Review/Approval



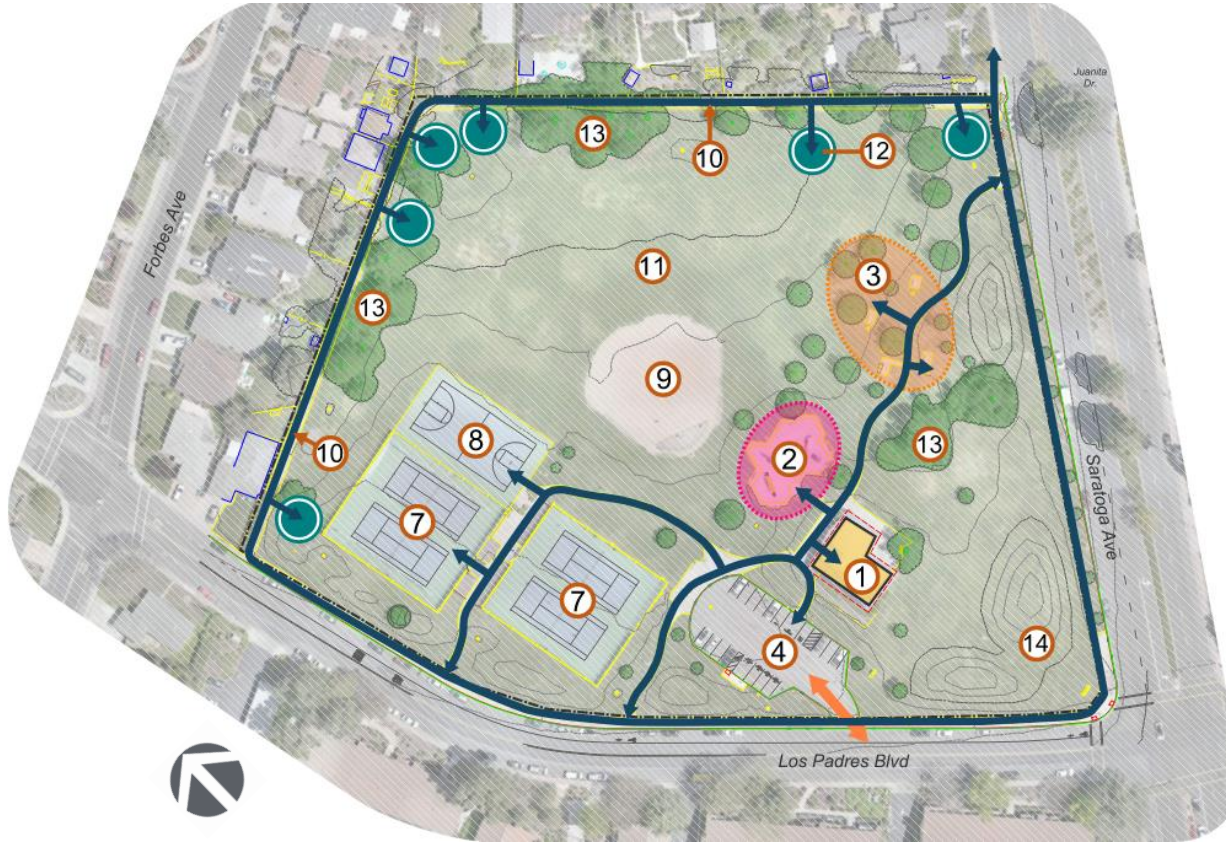



Project Objectives

- Use research based best practices and comply with all current Codes.
- Incorporate principles of inclusive playground design in the individual elements and the overall site plan.
- Incorporate seven elements of play (balancing, swinging, sliding, climbing, brachiating spinning, and running/free play) at the beginner, intermediate and advanced levels of play.
- Increase playground capacity while maintaining historical train theme of the existing park.
- Provide “age friendly” (multigenerational) spaces.
- Integrate nature and habitat (California native, drought resistant palate) into play environments.
- Provide outreach/education and master planning with residents and community partners.
- Address safe routes to parks (system connectivity) and American Disability Act (ADA) requirements within the park.
- Be sustainable (in materials, construction, life cycle, operations, and maintenance)



Existing Master Plan



- ① Community Room & Public Restroom Facility
- ② Play Area
- ③ Picnic Area
- ④ Parking Lot
- ⑤ Park Lighting
- ⑥ Site Furnishings
- ⑦ Tennis Court
- ⑧ Basketball Court
- ⑨ Softball Field
- ⑩ Loop Path
- ⑪ Multi-use Meadow
- ⑫ Fitness Station 
- ⑬ Existing Tree Grove
- ⑭ Existing Grassy Berm



Community Input

What do you enjoy doing when you visit the park?

Top 5 Activities:

- Walk (52%)
- Play on the Playground (46%)
- Picnic at the Park (38%)
- Enjoy Nature (36%)
- Group Gatherings/Celebrations (30%)





Community Input

What park areas are important to you for the rehabilitation of the project?

Top 5 Areas:

- Shade (64%)
- Playground – Renovate and Expand(60%)
- Picnic Areas(48%)
- Seating Areas (47%)
- Lighting (45%)



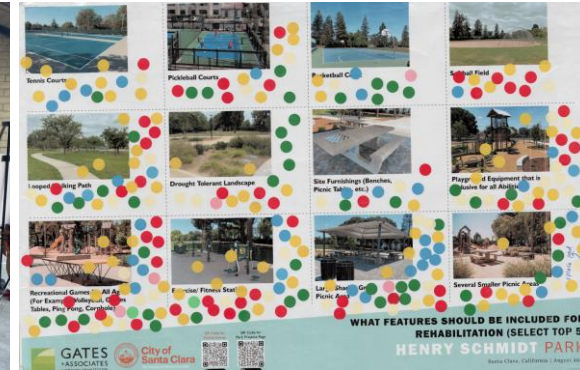


Community Input

Which features should be included for the rehabilitation?

Top 5 Features:

- Playground Equipment (57%)
- Looped Walking Path(51%)
- Site Furnishings (50%)
- Large Shaded Group Picnic Area (48%)
- Several Smaller Picnic Areas (46%)





Community Input

Train Theme:



1. Train Depot: 35%



2. Woodland Train: 31%



3. Whimsical Train: 34%



Community Input – 7 Elements of Play



Balancing Play - a



Balancing Play - b



Balancing Play - c

Balancing “c” – 48%



Brachiating Play - a



Brachiating Play - b



Brachiating Play - c

Brachiating “b” – 65%



Climbing Play - a



Climbing Play - b



Climbing Play - c

Climbing “c” – 54%



Community Input – 7 Elements of Play



Sliding Play - a



Sliding Play - b



Sliding Play - c

Sliding “b” – 63%



Spinning Play - a



Spinning Play - b



Spinning Play - c

Spinning “b” – 62%



Swinging Play - a



Swinging Play - b



Swinging Play - c

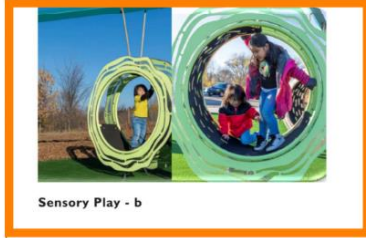
Swinging “b” – 40%



Community Input – 7 Elements of Play



Sensory Play - a



Sensory Play - b



Music Play - a



Music Play - b



Music Play - c

Sensory Play “b” – 80%

Music Play “b” – 45%



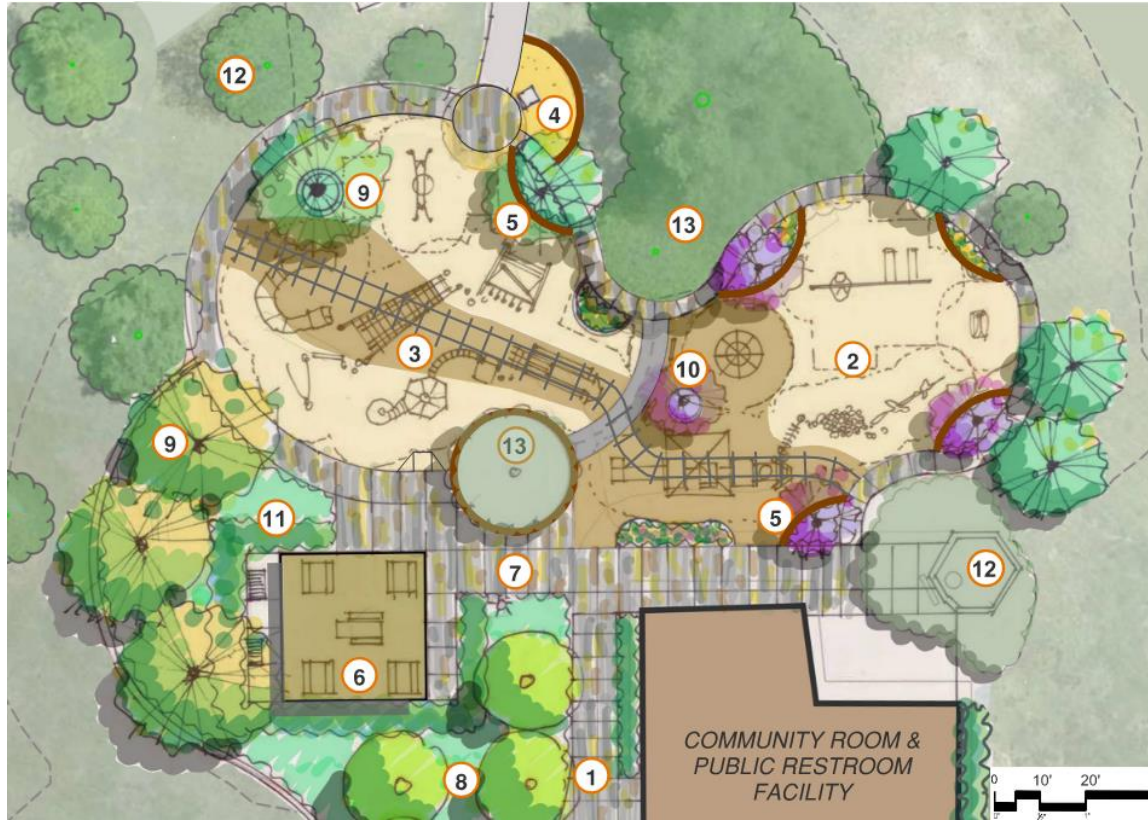
Henry Schmidt Park – Master Plan Update



- 1** NEW ENTRY PLAZA (PERMEABLE PAVERS) WITH ORCHARD GRID
- 2** NEW PLAY AREA (7,200 - 8,300 SF)
- 3** NEW SAND PLAY AREA
- 4** NEW COVERED GROUP PICNIC AREA
- 5** NEW SMALL GROUP PICNIC AREA
- 6** INDIVIDUAL PICNIC AREA
- 7** NEW DROUGHT TOLERANT PLANTINGS
- 8** NEW SIDEWALK
- 9** NEW PATHWAY (PERVIOUS CONC.)
- 10** NEW ENTRY NODE
- 11** NEW PERVIOUS DG PERIMETER WALKING PATH
- 12** NEW DG PATH TO FITNESS STATIONS
- 13** NEW GROUP FITNESS STATIONS
- 14** EX. FITNESS TO BE REMOVED
- 15** RESURFACED & STRIPED PARKING LOT
- 16** UPGRADE EX. LIGHT POLE/FIXTURE
- 17** EXISTING TREE TO REMAIN



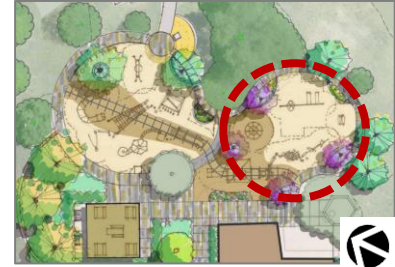
Playground Schematic Design – Train Depot Option 1



- 1 ENTRY CORRIDOR
- 2 PLAY AREA - AGE 2-5
- 3 PLAY AREA - AGE 6-12
- 4 SAND PLAY
- 5 TREE CUT-OUT WITH SEATING AND ACCENT PLANTINGS
- 6 COVERED GROUP PICNIC AREA WITH BBQ
- 7 PLAZA WITH PERMEABLE PAVERS
- 8 ORCHARD GRID
- 9 SHADE CANOPY TREES
- 10 ACCENT TREES
- 11 NEW DROUGHT TOLERANT PLANTINGS
- 12 EXISTING TREE TO REMAIN

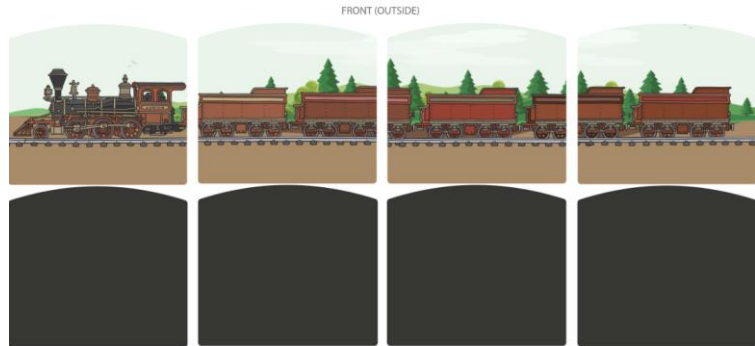
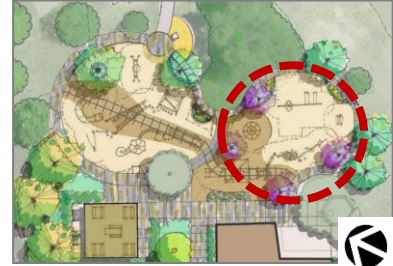
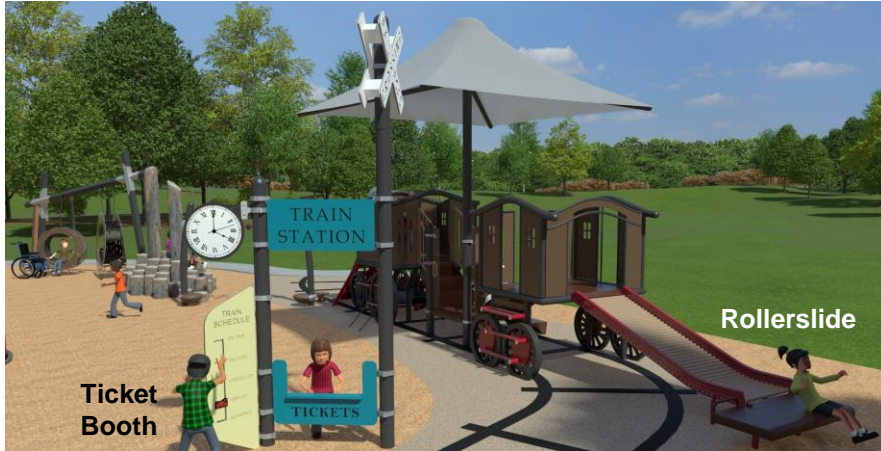


Playground Option 1: Age 2-5



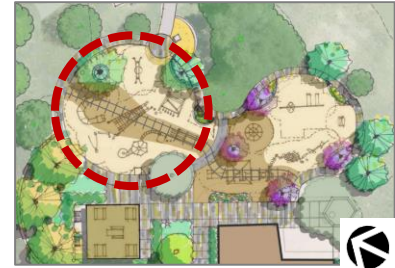


Playground Option 1: Age 2-5





Playground Option 1: Age 6-12





Playground Option 1: Age 6-12





Playground Option 1: Elements of Play



#1 Sliding #2 Balancing #3 Brachiating #4 Spinning #5 Climbing #6 Swinging #7 Running



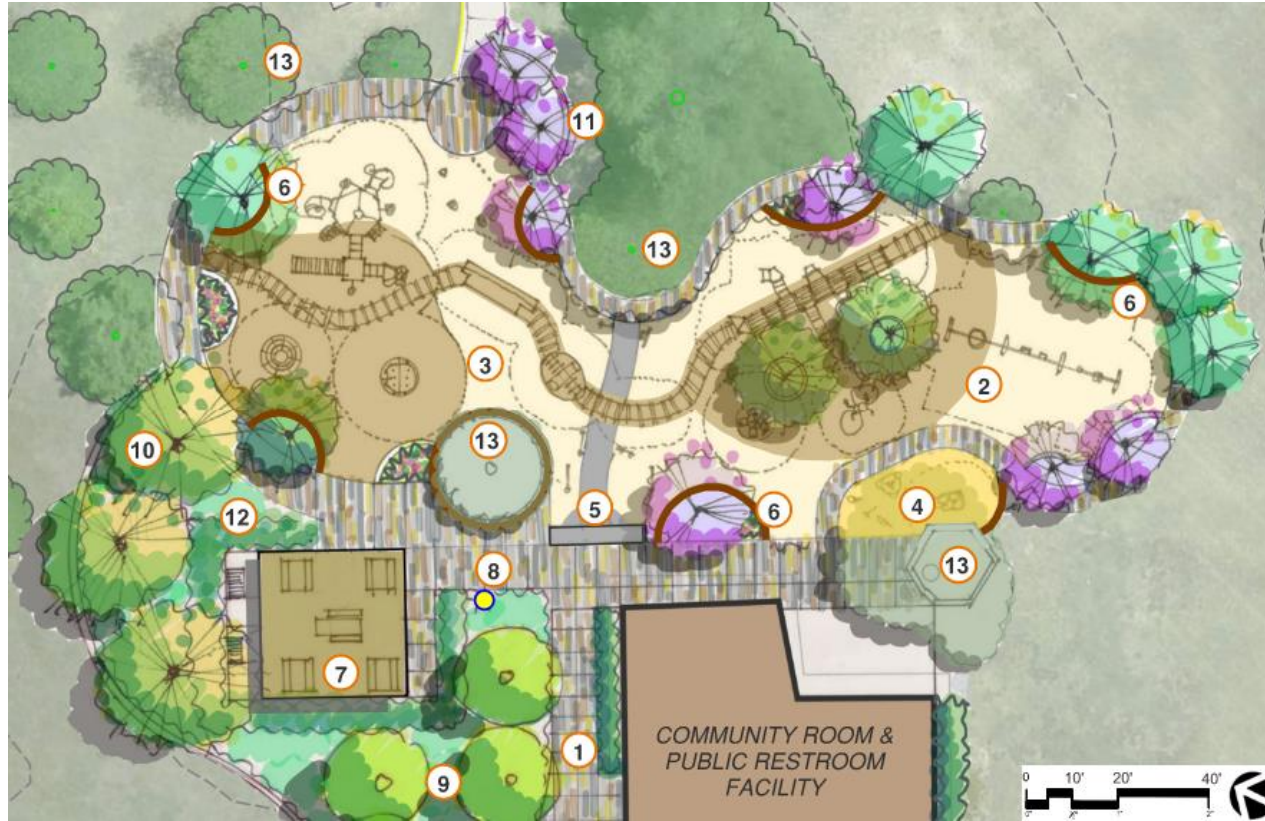
Playground Option 1: Play Value Table

Elements of Play	Ages 2-5	Level of Play	* Proposed Capacity	Ages 6-12	Level of Play	* Proposed Capacity	Total Capacity
Balancing	1	B=0 I=1 A=0	5	8	B=4 I=3 A=1	23	28
Sliding	1	B=0 I=1 A=0	3	2	B=1 I=0 A=1	8	11
Brachiating	1	B=0 I=0 A=1	3	1	B=0 I=1 A=0	3	6
Spinning	1	B=0 I=1 A=0	12	1	B=0 I=0 A=1	3	15
Climbing	6	B=2 I=2 A=2	20	3	B=0 I=1 A=2	52	72
Swinging	3	B=2 I=1 A=0	4	1	B=0 I=1 A=0	5	9
Running/Free Play	4	N/A	18	8	N/A	20	38
Total:	20		65	23		114	179
Inclusive Play Elements	10	B=5 I=2 A=3	37	13	B=10 I=1 A=2	30	67

Level of Play:
B: Beginner I: Intermediate A: Advanced



Playground Schematic Design – Train Depot Option 2



- 1 ENTRY CORRIDOR
- 2 PLAY AREA - AGE 2-5
- 3 PLAY AREA - AGE 6-12
- 4 SAND PLAY
- 5 ENTRY PORTAL
- 6 TREE CUT-OUT WITH SEATING AND ACCENT PLANTINGS
- 7 COVERED GROUP PICNIC AREA WITH BBQ
- 8 PLAZA WITH PERMEABLE PAVERS
- 9 ORCHARD GRID
- 10 SHADE CANOPY TREES
- 11 ACCENT TREES
- 12 NEW DROUGHT TOLERANT PLANTINGS
- 13 EXISTING TREE TO REMAIN



Playground Option 2: Age 2-5



**Horizontal
Overhead Ladder
w/ Tree Toppers**

Ten Spin

Slide

**Curved Low
Ramp
Climber**

**Train
Console w/
Wheel**

**Train Cow
Catcher**



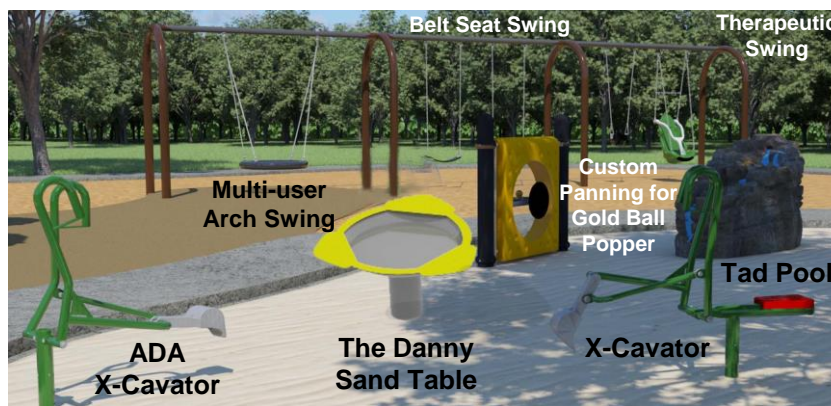
Playground Option 2: Age 2-5



“Henry Schmidt Park” Depot Station Archway



Train Cow Catcher
Interactive Train Spinning Wheel Tunnel
Ball Post Climber



Belt Seat Swing
Therapeutic Swing
Multi-user Arch Swing
The Danny Sand Table
Custom Panning for Gold Ball Popper
Tad Pool
ADA X-Cavator



Playground Option 2: Age 6-12



Custom Water
Tower w/ City Logo

Cyclo Cone
Plus Climber

Colossus
Chimes

Babel
Drum

Nature
Tree-O
Climber

Chameleon II
Spiral Slide

Roller Slide





Playground Option 2: Age 6-12



Custom Water Tower w/ "City of Santa Clara" & City Seal



Playground Option 2: Elements of Play



Henry Schmidt Park

- #1 Sliding
- #2 Balancing
- #3 Brachiating
- #4 Spinning
- #5 Climbing
- #6 Swinging
- #7 Running



Playground Option 2: Play Value Table

ELEMENTS OF PLAY	Ages 2-5	Level of Play	Proposed Capacity	Ages 6-12	Level of Play	Proposed Capacity	Total Capacity
Balancing	2	B/I	12	1	A	12	24
Sliding	1	B	2	3	B / A	6	8
Brachiating	1	I/A	4	1	A	12	16
Spinning	1	B/I	10	2	B / I	23	33
Climbing	6	B/I/A	18	7	I / A	26	34
Swinging	5	B/I	8	4	B/I	7	15
Running / Free Play	2		20	1		17	37
Total:	18		74	19		103	177
Inclusive Play Elements	9	B = 3 I = 3 A = 1	23	5	B = 2 I = 2 A = 4	30	53

LEVEL OF PLAY:
B: Beginner I: Intermediate A: Advanced



Playground Play Value Comparison

Elements of Play	Ages 2-5									Ages 6-12									Total Capacity		
	Quantity			Level of Play		Proposed Capacity			Quantity			Level of Play		Proposed Capacity			Existing	Option 1	Option 2		
	Existing	Option 1	Option 2	Option 1	Option 2	Existing	Option 1	Option 2	Existing	Option 1	Option 2	Option 1	Option 2	Existing	Option 1	Option 2					
Balancing	0	1	2	B = 0 I = 1 A = 0	B / I	0	5	12	1	8	1	B = 4 I = 3 A = 1	A	4	23	12	4	28	24		
Sliding	0	1	1	B = 0 I = 1 A = 0	B	0	3	2	1	2	3	B = 1 I = 0 A = 1	B / A	2	8	6	2	11	8		
Brachiating	0	1	1	B = 0 I = 0 A = 1	I / A	0	3	4	0	1	1	B = 0 I = 1 A = 0	A		3	12		6	16		
Spinning	0	1	1	B = 0 I = 1 A = 0	B / I	0	12	10	0	1	2	B = 0 I = 0 A = 1	B / I		3	23		15	33		
Climbing	0	6	6	B = 2 I = 2 A = 2	B / I / A	0	20	18	1,1	3	7	B = 0 I = 1 A = 2	I / A	8	52	26	8	72	34		
Swinging	2	3	5	B = 2 I = 1 A = 0	B / I	2	4	8	0	1	4	B = 0 I = 1 A = 0	B / I		5	7	2	9	15		
Running/ Free Play	3	4	2	N/A		12	18	20	1	8	1	N/A		12	20	17	24	38	37		
Total:	5	20	18			14	65	74	4	23	19			20	114	103	34	179	177		
Inclusive Play Elements:	0 not accessible	10	9	B = 5 I = 2 A = 3	B = 3 I = 3 A = 1		37	23	0 not accessible	13	5	B = 10 I = 1 A = 2	B = 2 I = 2 A = 4		30	30	0	67	53		



Play Components Comparison: Water Tower

Option 1



Option 2



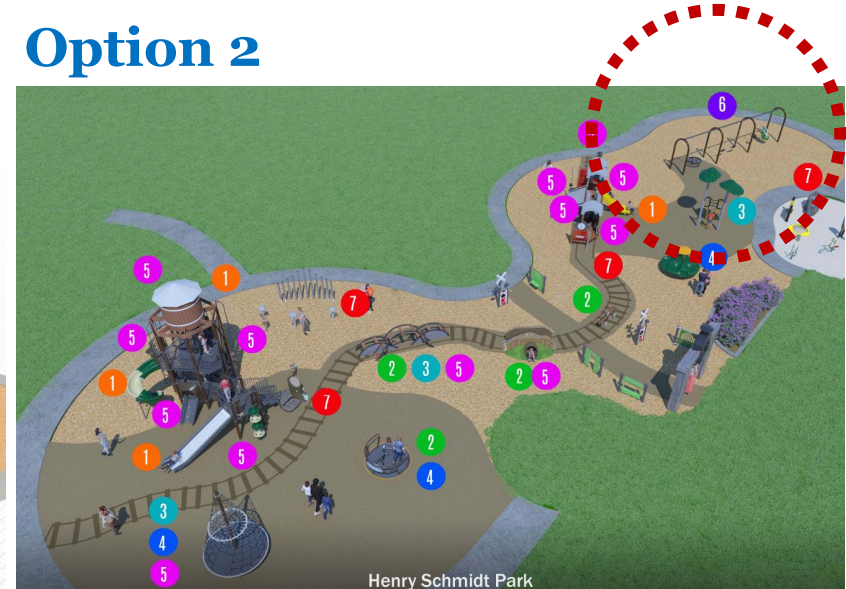


Play Components Comparison: Swing Zone

Option 1



Option 2





Project Schedule/ Next Step

Apr. 17, 2023

**Project
Kick-off**

Jul. 18, 2023

**1st PRC
Meeting:
On-line Survey
Opens on July 19**

Aug. 4, 2023

**1st Outreach:
Street Dance
at Franklin
Square**

Aug. 11, 2023

**2nd Outreach:
Cinema Night
at Henry
Schmidt Park**

Aug. 14, 2023

**Online Survey
Ends**

Nov. 21, 2023

**2nd PRC
Meeting**

**You
Are
here**



Parks & Recreation Commission

- Comments, Feedback & Questions?
- Recommendation to Council
 - Henry Schmidt Park Master Plan Update
 - Preferred Playground Schematic Design
Option 1 or 2