



Council Meeting

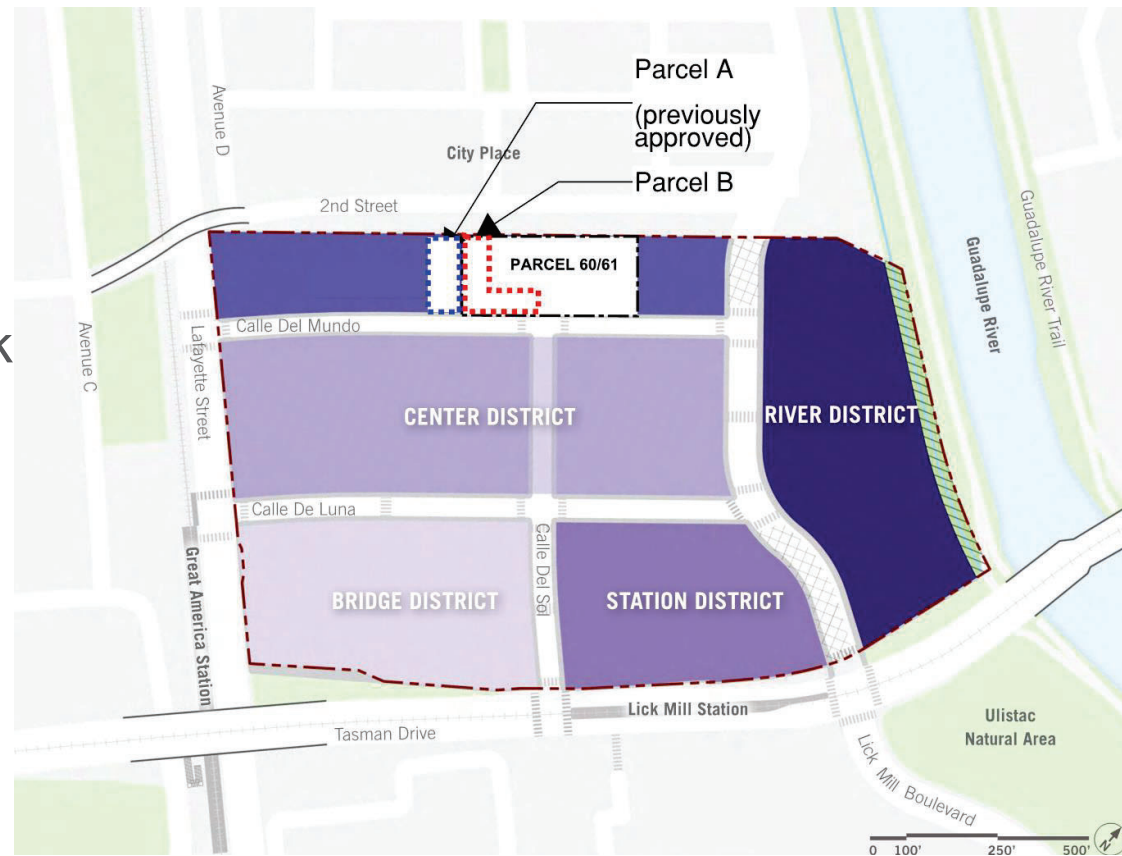
23-126. Approval of the Schematic Design – Master Plan for the New Public Mini Park at 2263 Calle Del Mundo (Ensemble Investments/Rethink Development)

February 21, 2023

Background — Park Location

Patrick Henry Drive Specific Plan

- Urban Design Framework
- Parks & Active Recreational Amenities



Community Input & Commission Review

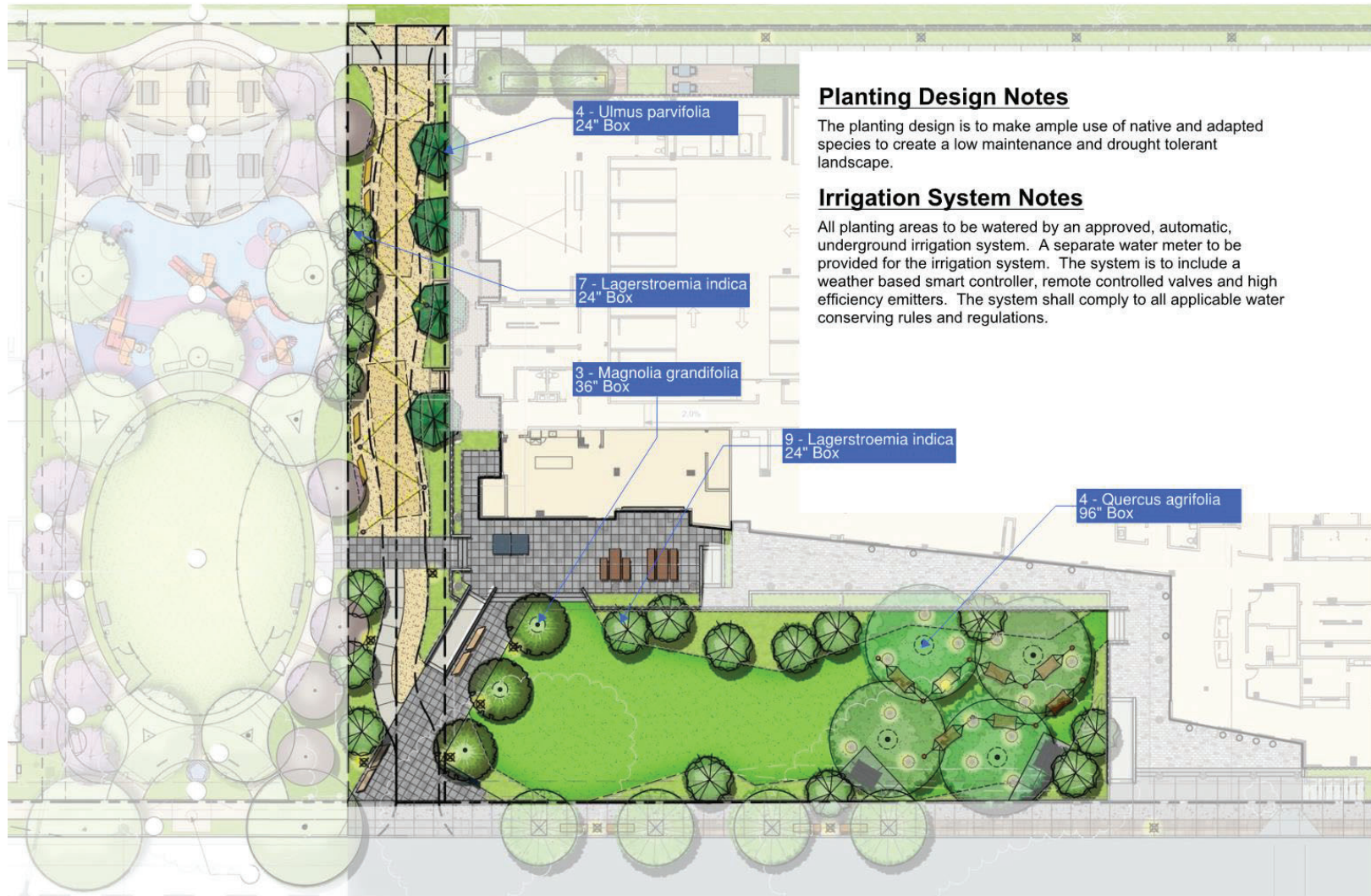
- August 16, 2022 – Parks & Recreation Commission Meeting #1
- September 17- 18, 2022 – Art & Wine Festival
- August 31, 2022 – September 20, 2022 – Community Survey
- January 17, 2023 – Parks & Recreation Commission #2
 - Recommendation for Approval
- Council Consideration of Approval February 21, 2023



Parcel B Park Amenities



Landscape Plan



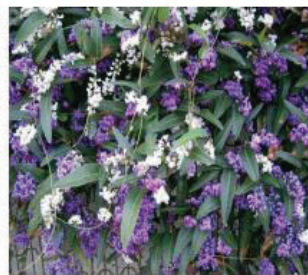
Planting Design Notes

The planting design is to make ample use of native and adapted species to create a low maintenance and drought tolerant landscape.

Irrigation System Notes

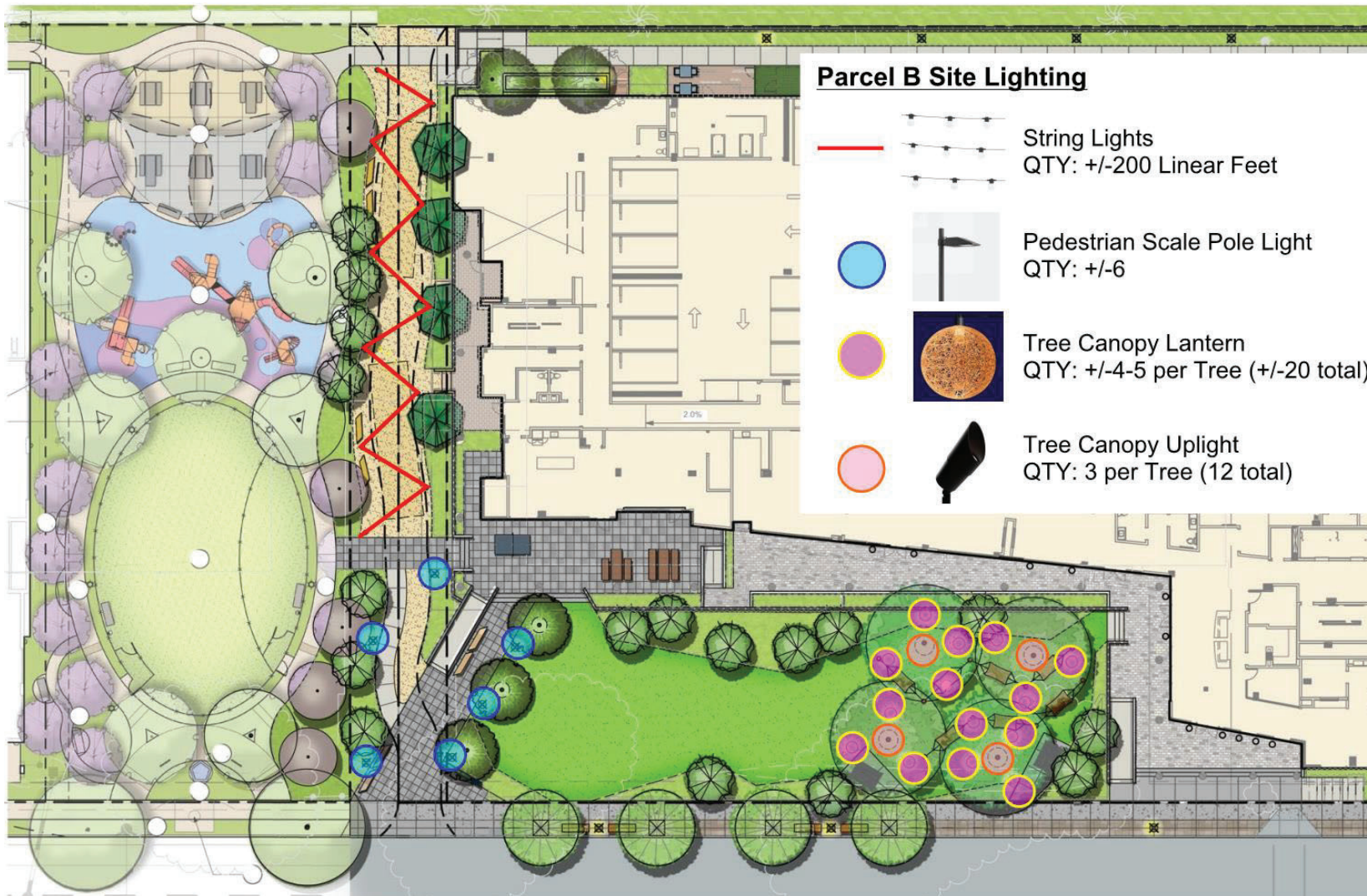
All planting areas to be watered by an approved, automatic, underground irrigation system. A separate water meter to be provided for the irrigation system. The system is to include a weather based smart controller, remote controlled valves and high efficiency emitters. The system shall comply to all applicable water conserving rules and regulations.

Landscape Plan – Planting Imagery

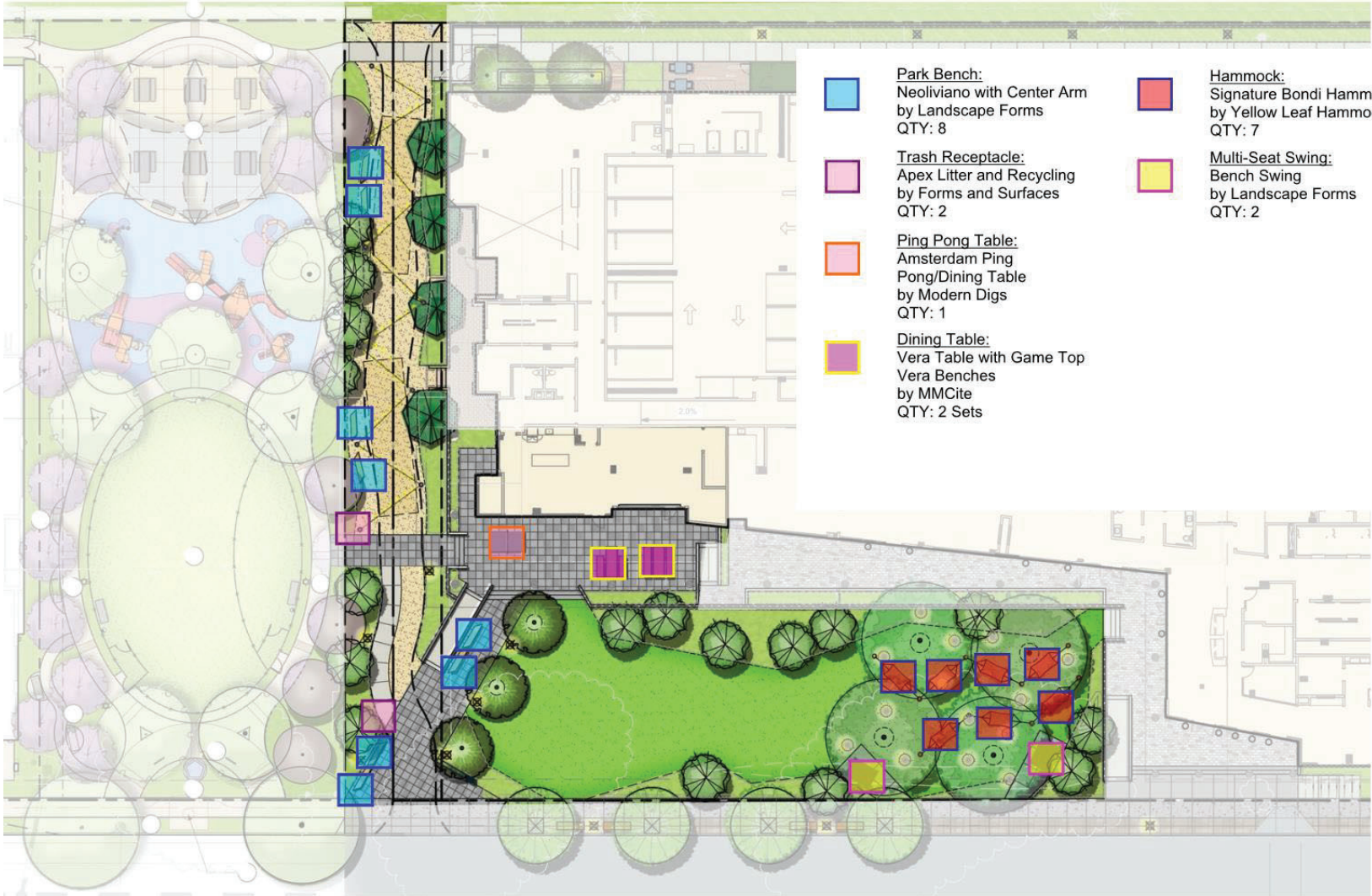


Shrub Planting Character Imagery

Lighting Plan



Site Furnishings Plan



Parcel B Park Furniture & Amenities



Multi-Seat Swing



Park Bench - to match Parcel A

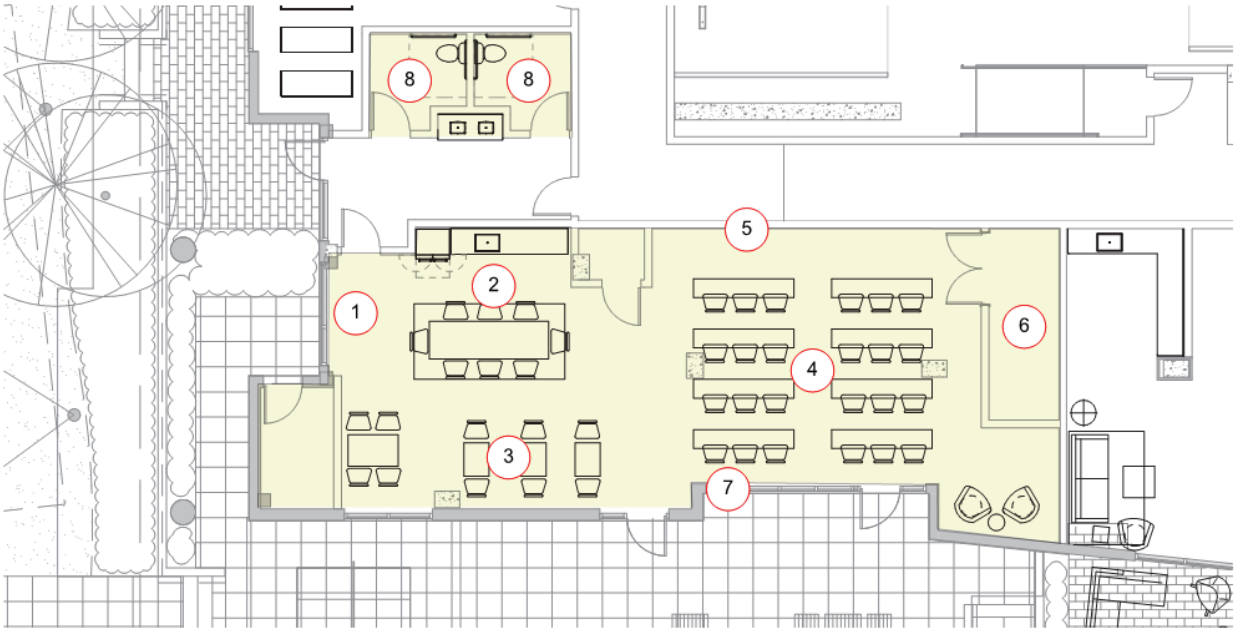


Trash/Recycle Receptacle - to match Parcel A



Park Table with Game Top

Community Room – Floor Plan



PARTIAL LEVEL 1 PLAN - N.T.S.

KEYNOTES

- 1. Park community room
- 2. Kitchen with central island
- 3. Flex seating
- 4. Lecture space
- 5. Projection Screen
- 6. Storage
- 7. Operable garage door
- 8. Restroom





















Council Consideration

- That Council approve the proposed Schematic Design - Master Plan for the New Public Mini Park at 2263 Calle Del Mundo.

