


7/18/23

Item 4



Council and Authorities Concurrent Meeting

Item # 4 RTC- 23-747
700 Mathew Street

July 18, 2023

1



700 Mathew Street Rezone

Project Information

Rezoning: PD Planned Development to MH Heavy Industrial

- Site Area- 64,898 Square Feet
- Zoning- Planned Development
- General Plan- Heavy Industrial
- Currently occupied with two vacant buildings
- Previously “Off-the Wall Soccer” and warehouse use

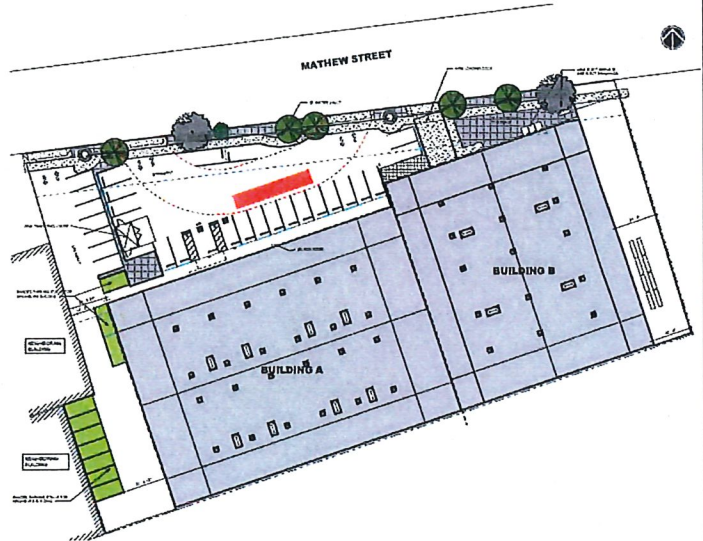


2



700 Mathew Street Proposal

- Heavy Industrial use (Quality Metal Spinning)
- Interior remodel- add a mezzanine area for office use, equipment platforms
- Restripe parking lot
- New trash enclosure
- Sidewalk and other site improvements

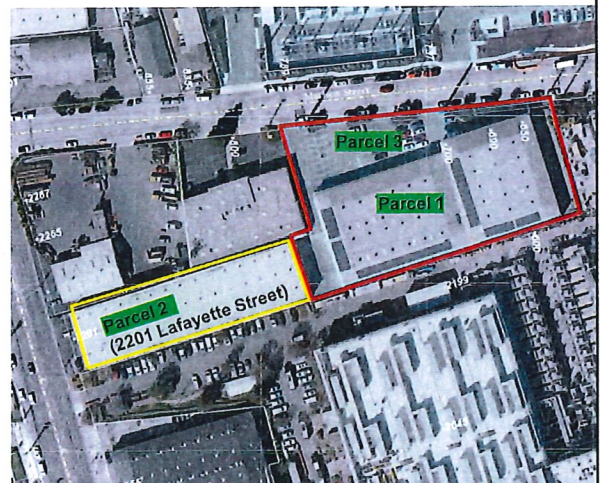


3



700 Mathew Street Background

- Existing PD Zoning covers 3 parcels
- Conditions of prior Subdivision restricted use of Parcel One to a warehouse use or a soccer recreational facility
- Parking Variance was approved for 48 spaces, where 58 were required
- Existing Parking Agreement between Parcel One and Two for use of the parking lot on Parcel 3



4



700 Mathew Street

Planning Commission Action

- Planning Commission approved the Variance for parking and reduced front setback and landscaping and approved an Off-site Parking Permit

Planning Commission and Staff Recommendation

- Approve the use of the Class I Categorical Exemption per Section 15301, Existing Facilities of the CEQA Guidelines;
- Adopt a resolution approving the Rezone from Planned Development (PD) to Heavy Industrial (MH) for the property located at 700 Mathew Street, subject to conditions of approval.

5



Council and Authorities Concurrent Meeting

**Item # 4 RTC- 23-747
700 Mathew Street**

July 18, 2023

6