



# **Parks & Recreation Commission Meeting**

**24-978. Item #3. Consideration of the Revised Schematic Design for the New Public Mini Park at 4590 Patrick Henry Drive.**

**October 21, 2024**



## Background

- 1.77 acres of parkland is required for the project to mitigate the impact of the new residents.
- The developer will meet its parkland dedication requirement through the construction, dedication, and maintenance of a one-half acre mini park and payment of a fee due in lieu of the balance of the parkland dedication owed.
- This 1/2-acre mini park is the developer's share of a larger 1.75-acre park that straddles adjacent property lines. While the two park parcels will be developed and dedicated to the City at separate times, by different developers, the final park design will be an integrated, cohesive park experience.
- The initial schematic design was presented to the Commission at its March 19<sup>th</sup> meeting, at which time the Commission initiated the public comment period to include an online survey and community engagement events.



## Discussion

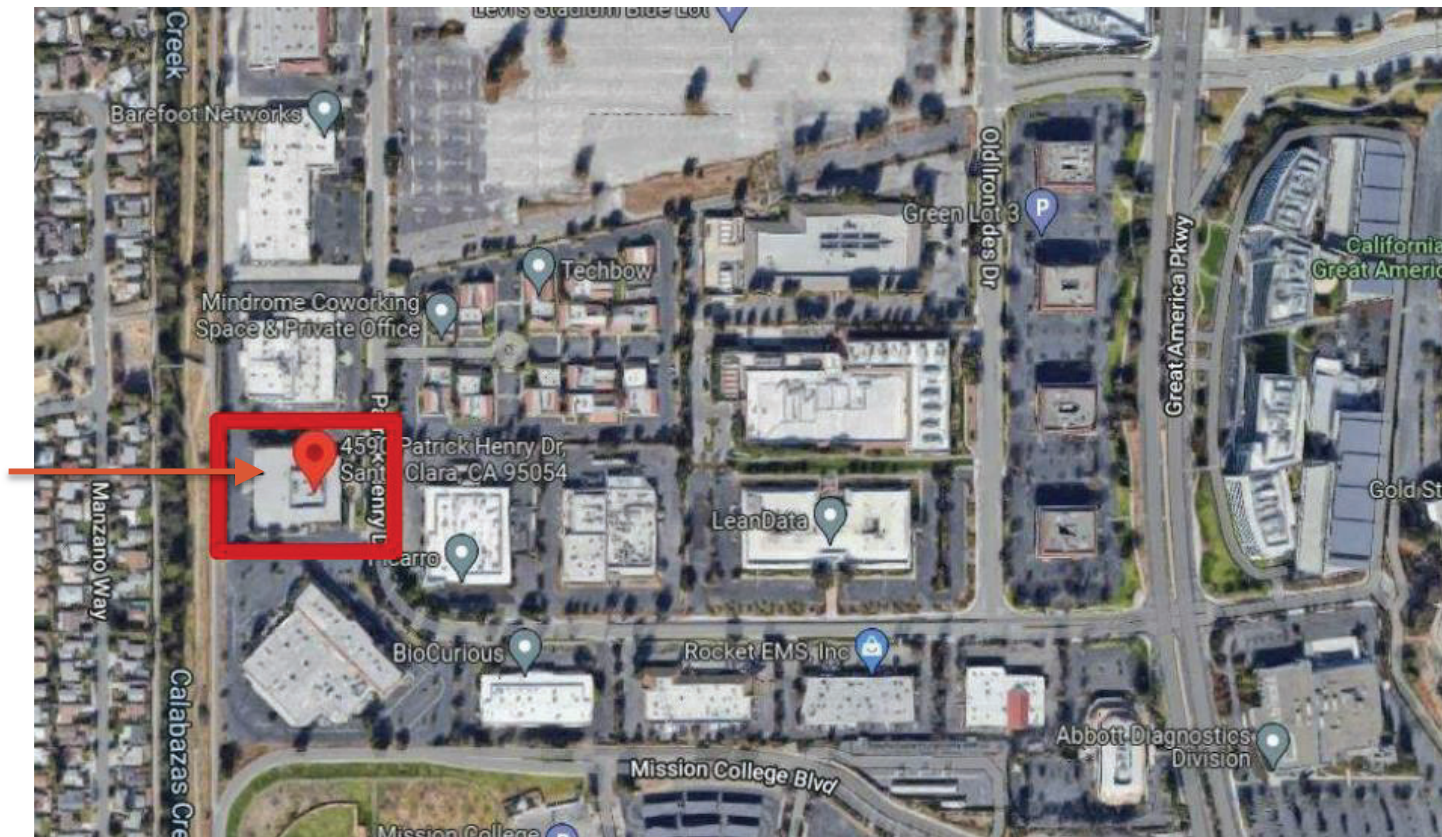
- Tonight's presentation will be focused on a revised park design to address the following:
  - The developer's riparian mitigation obligation; and
  - The results of the public survey & community engagement events.

# Site Context



**City of Santa Clara**  
The Center of What's Possible

**Project Site**

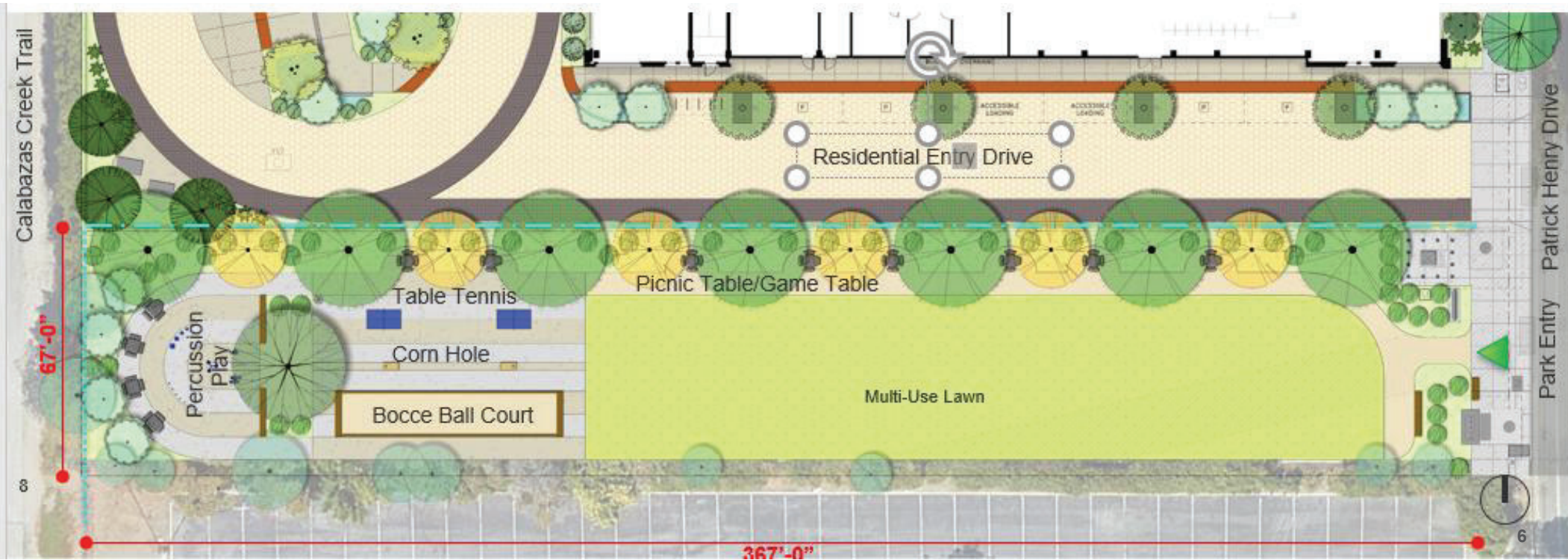


# 4590 Patrick Henry Drive





# Previous Design





## **Schematic Design Comparison**

- Maintains the same park elements as the initial schematic design.
- Initial design includes features requested by the community:
  - Children's activities
  - Pedestrian pathways
  - Outdoor seating for gathering
  - Picnic areas
- Revised design incorporates the developer's riparian mitigation obligation at the west side of the park.



# Revised Design







## **Developer's Riparian Mitigation Obligation**

- Due to the site location of the residential building, the developer is required to provide mitigation to offset the project's impact on the ecological functions and values of the riparian corridor.
- Developer has been unable to secure mitigation offsite.
- City agreed to accept the developer's riparian mitigation obligation of 0.14-acres within the park parcel.
- Given the concession to accept the mitigation in the park, no additional credit against the project's parkland dedication requirement will be provided.





# Community Engagement

- March 20, 2024 - April 12, 2024: Online Survey
  - 175 responses received
- April 2, 2024: Community Pop-Up Events
  - 47 attendees at the Senior Center
  - 15 attendees at the Community Recreation Center



## **Community Feedback**

- Highly requested features, which were already a part of the original proposed design:
  - Children's activities
  - Pedestrian pathways
  - Outdoor seating for gathering
  - Picnic areas



**MATERIAL LEGEND**

- CONCRETE PAVING TYPE 1
- CONCRETE PAVING TYPE 2
- RED BROWN PATHWAY MIX
- GRASS
- PLANTING
- BUILT-IN BENCH WITH SKATE STOPPERS
- TRASH BIN PER CITY STANDARD
- CORN HOLE GAMES
- TABLE TENNIS
- MUSICAL PLAY EQUIPMENT

**PLANTING LEGEND**

(\* = SPECIES USED IN RIPARIAN ZONE, \* = NON-NATIVE SPECIES)

- QUERCUS LOBATA\* VALLEY OAK  
48" BOX
- QUERCUS AGRIFOLIA\* COAST LIVE OAK  
36" BOX
- AESCULUS CALIFORNICA\* CALIFORNIA BUCKEYE  
24" BOX
- PRUNUS SERRULATA\* JAPANESE CHERRY  
24" BOX

**PARK PROGRAMS**



**OUTDOOR MUSICAL INSTRUMENTS (ALL AGES)**

- POPULUS FREMONTII SSP. FREMONTII FREMONT COTTONWOOD  
24" BOX
- HETEROMELES ARBUTIFOLIA\* TOYON  
25 GALLON
- FREMONTODENDRON CALIFORNICUM\* CALIFORNIA FLANNELBUSH  
25 GALLON

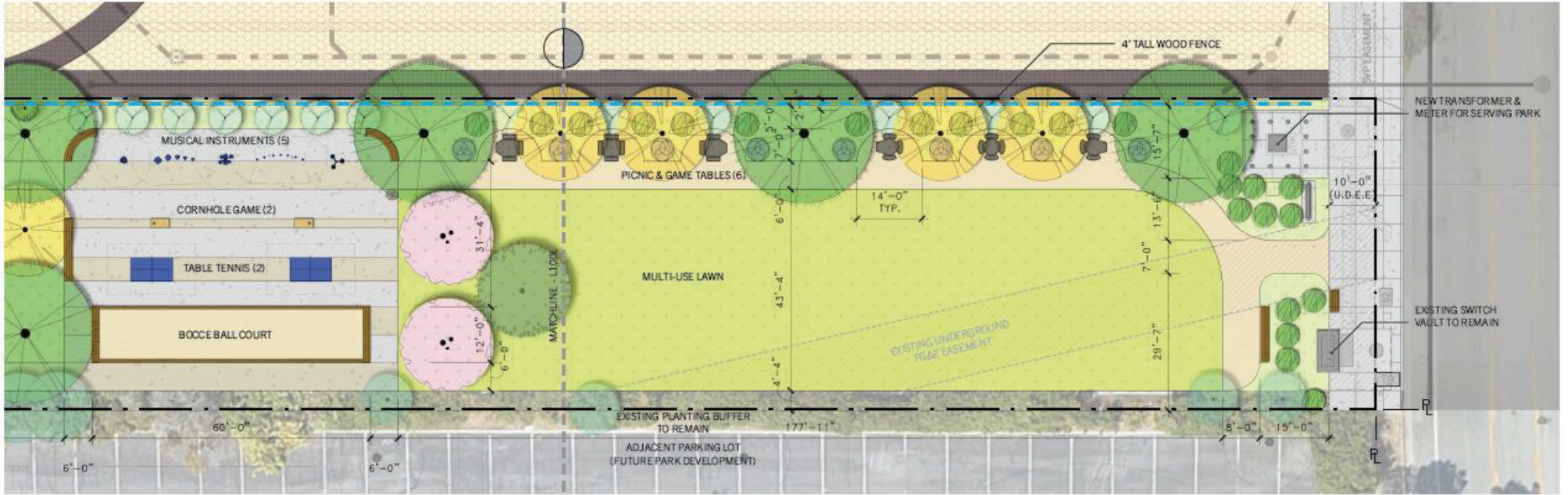
**TABLE TENNIS**

- SALVIA SONOMENSIS\* CREEPING SAGE  
15 GALLON
- SALVIA CLEVELANDII 'WINNIFRED GILMAN' WINNIFRED GILMAN CLEVELAND SAGE  
15 GALLON
- VITIS CALIFORNICA\* CALIFORNIA WILD GRAPE  
15 GALLON

**BOOCCE BALL COURT**

- RHAMNUS CALIFORNICA\* COFFEEBERRY  
15 GALLON
- EXISTING TREE TO REMAIN

SCALE 1" = 10'



**MATERIAL LEGEND**

- CONCRETE PAVING TYPE 1
- CONCRETE PAVING TYPE 2
- RED BROWN PATHWAY MIX
- GRASS
- PLANTING
- BUILT-IN BENCH WITH SKATE STOPPERS
- TRASH BIN PER CITY STANDARD
- CORNHOLE GAMES
- TABLE TENNIS
- MUSICAL PLAY EQUIPMENT

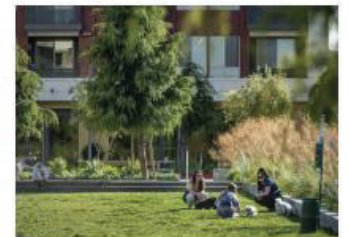
**PLANTING LEGEND**

(\* = SPECIES USED IN RIPARIAN ZONE; \* = NON-NATIVE SPECIES)

- QUERCUS LOBATA\* WALLEY OAK  
48" BOX
- QUERCUS AGRIFOLIA\* COAST LIVE OAK  
36" BOX
- AESCULUS CALIFORNICA\* CALIFORNIA BUCKEYE  
24" BOX
- PRUNUS SERRULATA\* JAPANESE CHERRY  
24" BOX

**PARK PROGRAMS**

- PICNIC TABLE PER CITY STANDARD (QCP FOOD COURT ROUND QR42FC & QR42FC3 ADA OPTION)
- GAMES TABLE PER CITY STANDARD (QCP FOOD COURT SQUARE QS42FC & QS42FC3 ADA OPTION)
- 30"H X 96"W X 6"D PARK SIGNAGE PER CITY STANDARD
- BOCCIE BALL COURT WITH WOOD CURBS



- POPULUS FREMONTII SSP. FREMONTII FREMONT COTTONWOOD  
24" BOX
- HETEROMELES ARBUTIFOLIA\* TOYON  
25 GALLON
- FREMONTODENDRON CALIFORNICUM\* CALIFORNIA FLANNEL BUSH  
25 GALLON
- SALVIA SONOMENSIS\* CREEPING SAGE  
15 GALLON
- SALVIA CLEVELANDII\* WINNIFRED GILMAN WINIFRED GILMAN CLEVELAND SAGE  
15 GALLON
- VITIS CALIFORNICA\* CALIFORNIA WILD GRAPE  
15 GALLON
- RHAMNUS CALIFORNICA\* COFFEEBERRY  
15 GALLON
- EXISTING TREE TO REMAIN

SCALE 1" = 10'





PAVING MATERIAL



CONCRETE PAVING (SANDBLAST FINISH)

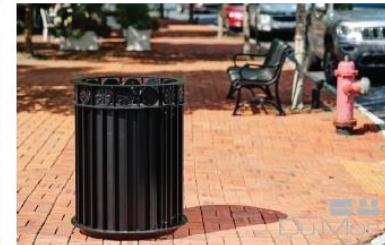


REDBROWN PATHWAY MIX (DECOMPOSED GRANITE)



LAWN

SITE FURNISHING



TRASH CAN (DU MOR 102-32SH PER CITY STANDARD)

SITE FURNISHING



BUILT-IN BENCHS WITH SKATE STOPPERS



TABLE TENNIS TABLES



OUTDOOR MUSICAL INSTRUMENTS



GAMES TABLE PER CITY STANDARD (QCP FOOD COURT SQUARE QS42FC & QS42FC3 ADA OPTION WITH GAME BOARD)



BOCCE BALL COURT



CORN HOLE GAMES



PICNIC TABLE PER CITY STANDARD (QCP FOOD COURT ROUND QR42FC & QR42FC3 ADA OPTION)





DECIDUOUS TREES



QUERCUS LOBATA\* (VALLEY OAK)



AESCULUS CALIFORNICA\*  
(CALIFORNIA BUCKEYE)



POPULUS FREMONTII SSP. FREMONTII (FREMONT COTTONWOOD)

(\* = SPECIES USED IN RIPARIAN ZONE; \* = NON-NATIVE SPECIES)

EVERGREEN TREES



QUERCUS AGRIFOLIA\* (COAST LIVE OAK)

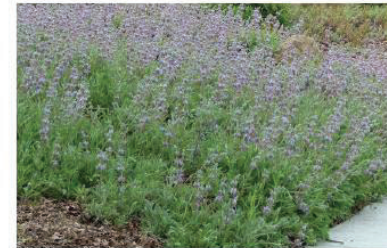


PRUNUS SERRULATA\*  
(JAPANESE CHERRY)

PERENNIALS



SALVIA CLEVELANDII 'WINNIFRED GILMAN'  
(WINNIFRED GILMAN CLEVELAND SAGE)



SALVIA SONOMENSIS\* (CREEPING SAGE)

SHRUBS



HETEROMELES ARBUTIFOLIA\*  
(TOYON)

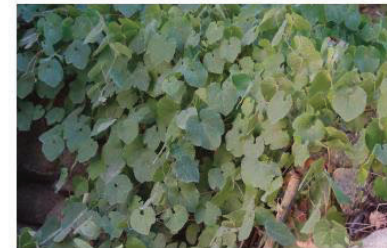


RHAMNUS CALIFORNIC\*  
(COFFEEBERRY)



FREMONTODENDRON CALIFORNICUM\*  
(CALIFORNIA FLANNELBUSH)

VINES



VITIS CALIFORNICA\*  
(CALIFORNIA WILD GRAPE)



## Commission Consideration

- Receive public comment on the proposed revised schematic design.
- Recommend that the City Council approve the proposed schematic design for the new public mini park at 4590 Patrick Henry Drive.