



Parks & Recreation Commission Meeting

23-1209. Item #2. Consideration of the Schematic Design - Master Plan for the New Public Neighborhood Park at 2200 Calle Del Luna (Holland Partner Group - Tasman East Specific Plan)

October 17, 2023



Open Space Network

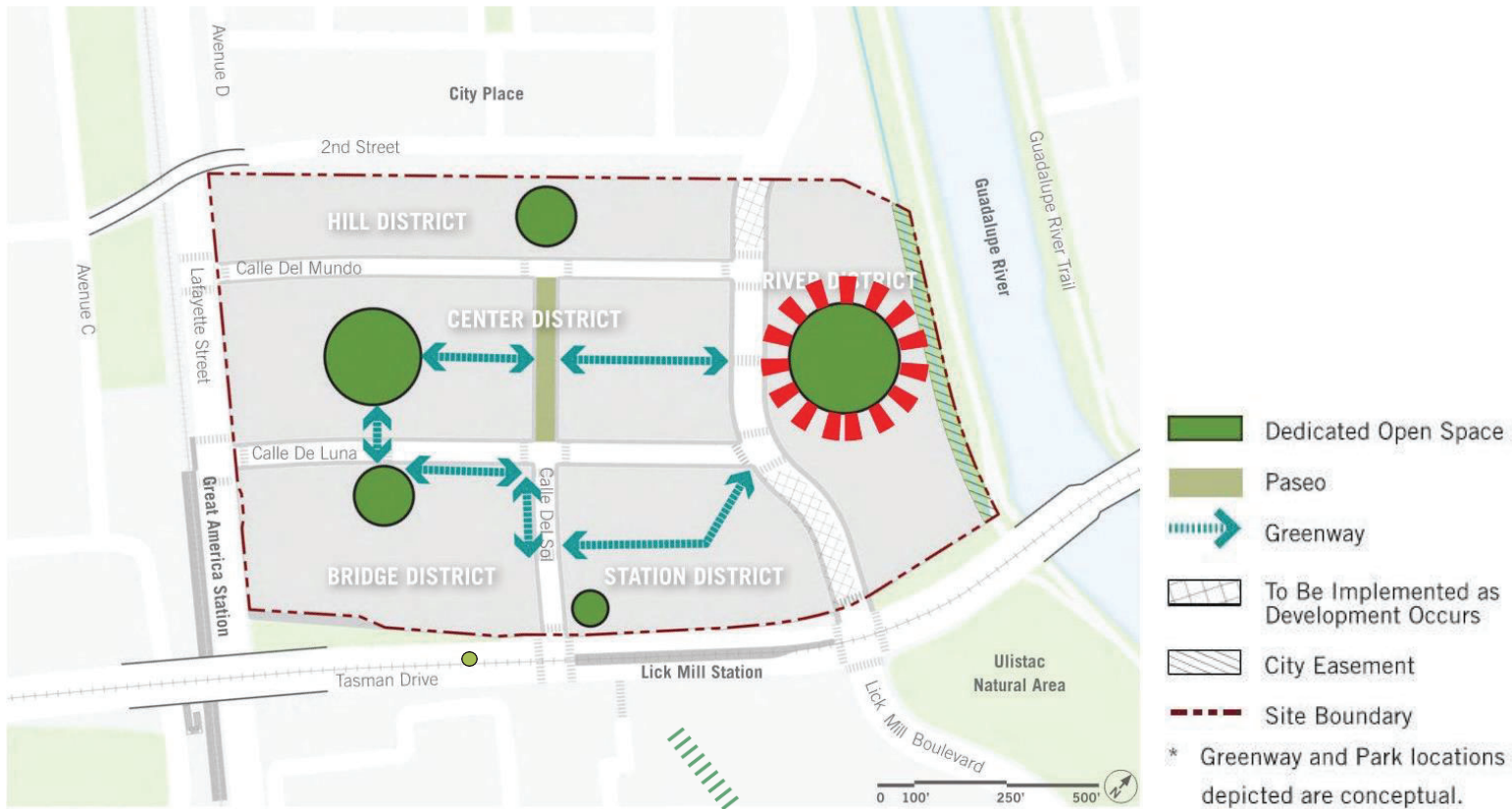
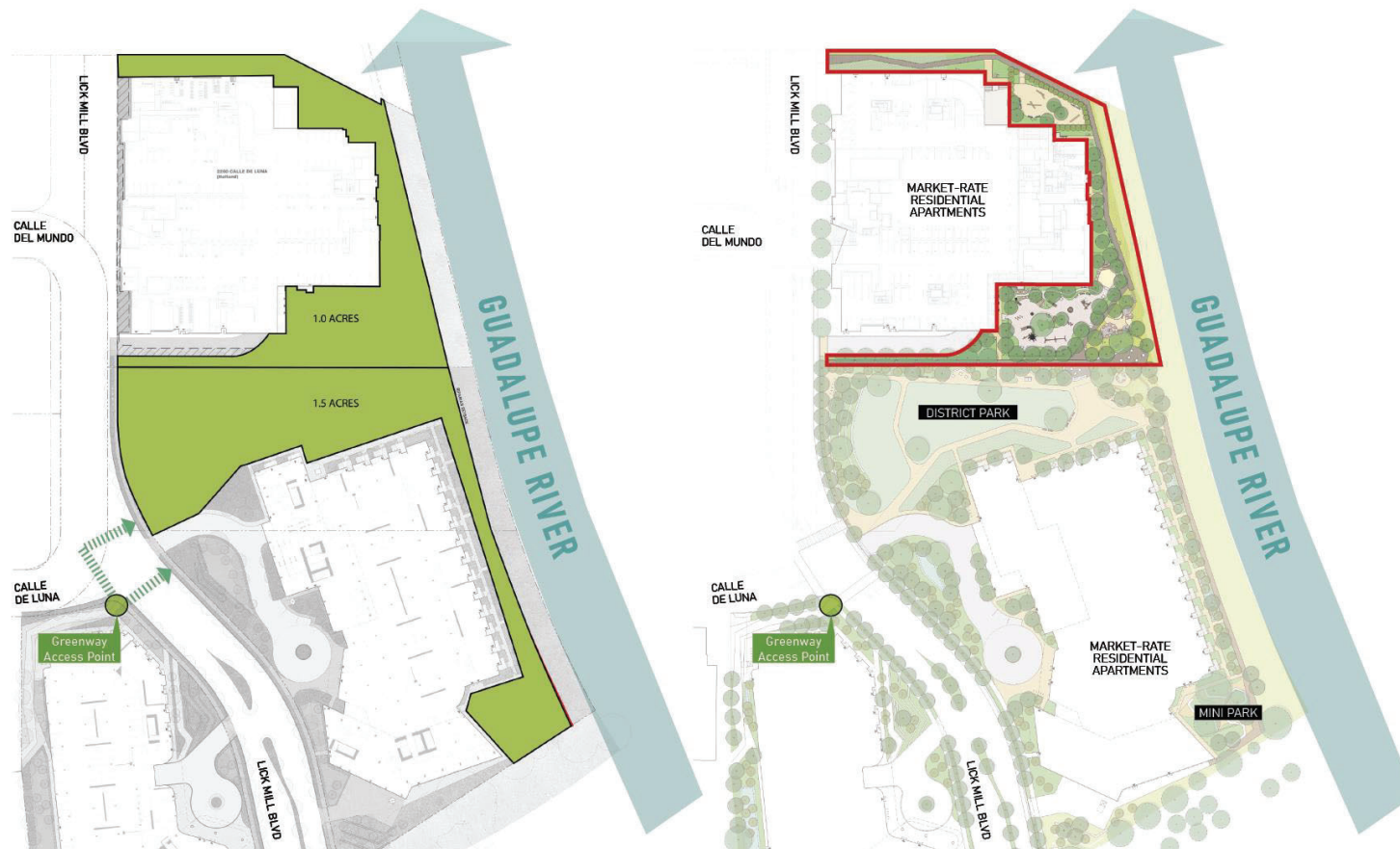


Figure 05-1-1 Open Space Locations

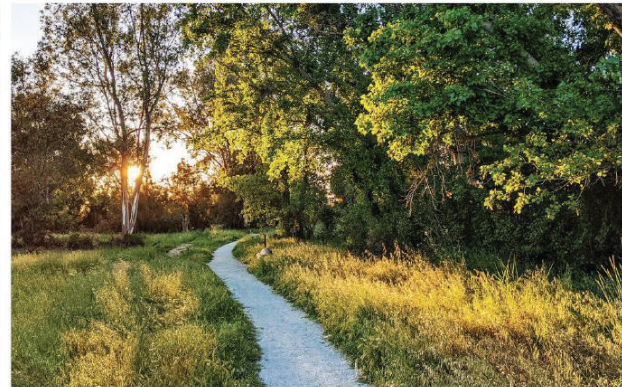
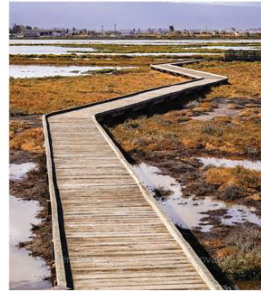


Site Overview





Local Inspiration





Illustrative Plan

- Legend

1. Trail
2. Park Entrance North (Grass Paver)
3. Off-Leash Dog Area
4. Bio-Retention Zone
5. Sand Pit
6. Children's Play Garden
7. Nature Discovery Garden Area
8. Game and Seating Area
9. Public Restrooms
10. Planted Mound (Native Planting)





Survey Findings

Emerging Themes



1. Shade & Planting



2. Park Lighting



3. Gathering Spaces



4. Circulation

Survey Recap: 182 visitors, 117 responses



1. Shade

Tree Canopy Diagram





1. Shade

Tree Canopy in Children's Play Garden

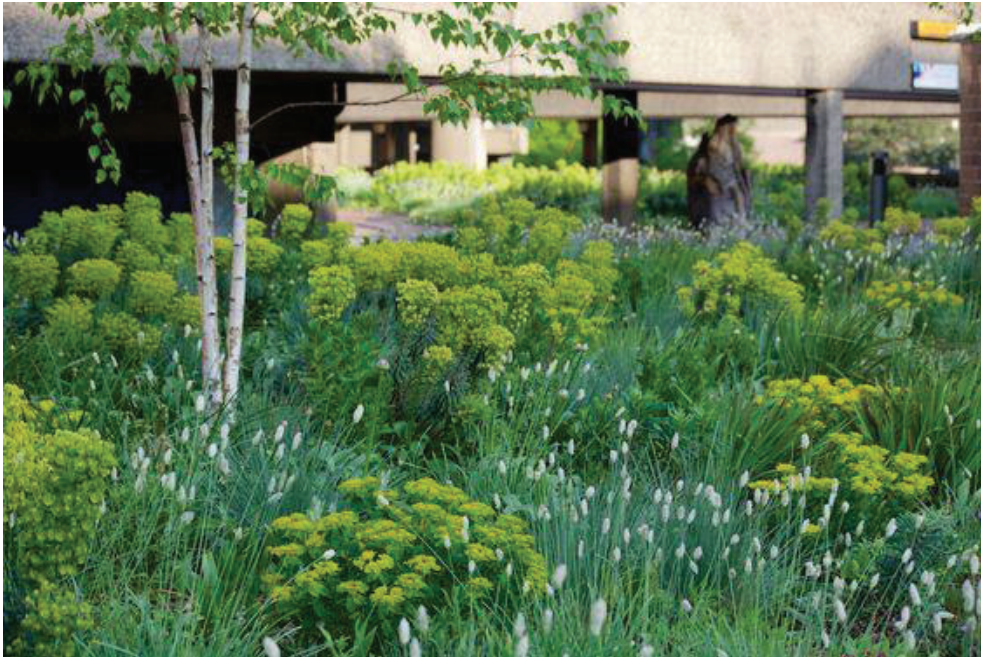


Park features an extensive tree canopy with 50+ trees



1. Planting

Preferred Planting Schemes



Shades of Green



Cool Purples and Whites



1. Planting

Native Planting Palette

TREES



River Birch - *Betula nigra*



Coast Live Oak - *Quercus agrifolia*



Box Elder - *Acer negundo*



Madia Madrone - *Arbutus Marina*

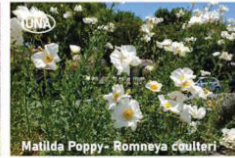
SHRUBS + PERENNIALS



Dogwood - *Cornus sericea*



Smoke Tree - *Cotinus coggygria*



Matilda Poppy - *Romneya coulteri*



White Sage - *Salvia apiana*



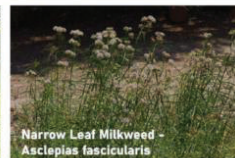
St. Catherine's Lace - *Eriogonum giganteum*



Mugwort - *Artemisia ludoviciana*



English Laurel - *Prunus laurocerasus*



Narrow Leaf Milkweed - *Asclepias fascicularis*



Hedge Nettle - *Stachys ajacoides*



Black Sage - *Salvia mellifera*



Common Yarrow - *Achillea millefolium*



Dyottas Iris - *Iris douglasiana*



Wild Ginger - *Asarum caudatum*



Seaside Daisy - *Erigeron glaucus* 'Wayne Roderick'

SEDGES/GRASSES



Deer Grass - *Muhlenbergia rigens*



Ruby Muhly Grass - *Muhlenbergia reverchonii*



Lowland Sedge - *Carex tumulicola*



Golden Dew Tufted Hairgrass - *Deschampsia cespitosa* 'Goldtau'



Common Rush - *Juncus patens*

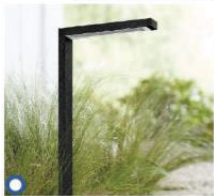


2. Park Lighting

Lighting Typology and Examples



1. Multi-Head Pole Light



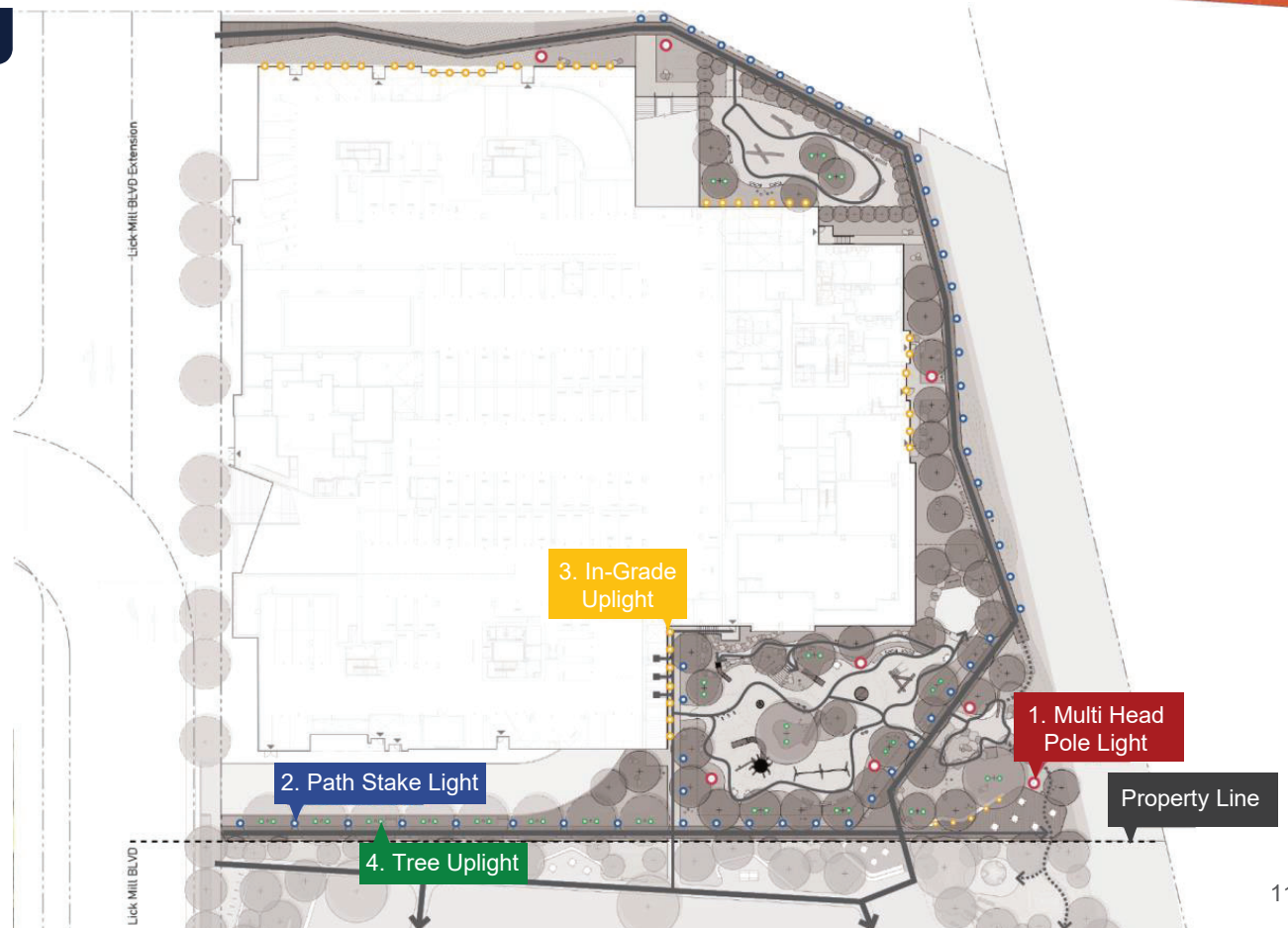
2. Path Stake Light



3. In-Garden Uplight or Downlight



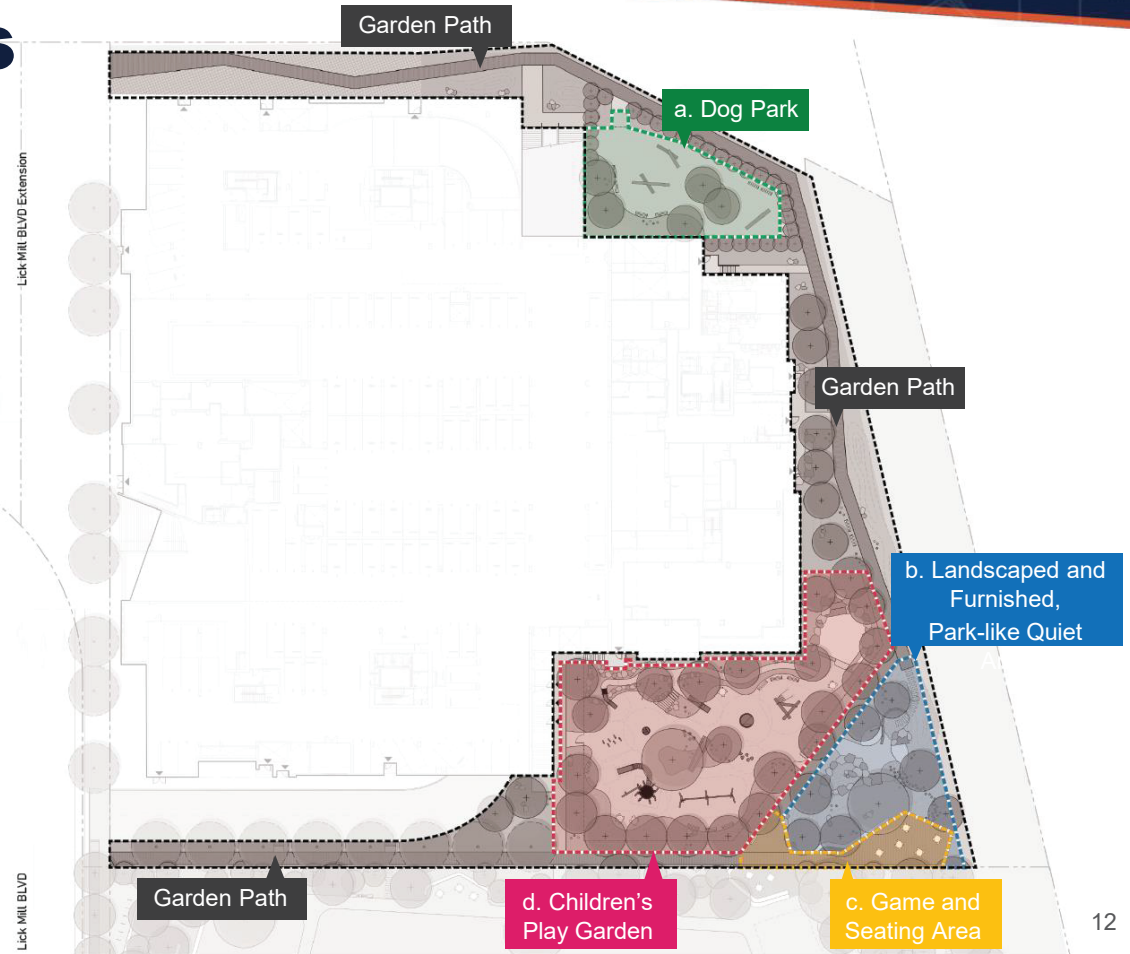
4. Tree Uplight





3. Gathering Spaces

- Public Park (TEFA) = 44,649 sf (1.03 a)
 - a) Dog Park
4,060 sf
 - b) Landscaped and Furnished, Park-like Quiet Area
4,411 sf
 - c) Game and Seating Area
1,527 sf
 - d) Children's Play Apparatus Area
13,489 sf





3. Gathering Spaces

Multi-Generational | Variety of Seating



Nature Discovery Garden Area



Seating Examples

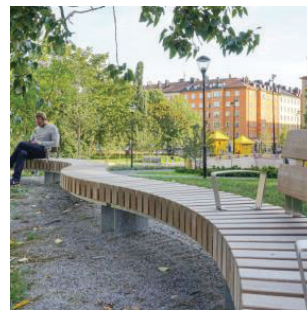


3. Gathering Spaces

Multi-Generational | Variety of Seating



Game and Seating Area



Seating Examples



3. Gathering Spaces

Age-Appropriate Playground Program



Sand Pit with Integrated Seating












Featured Wood Log & Balancing Steps

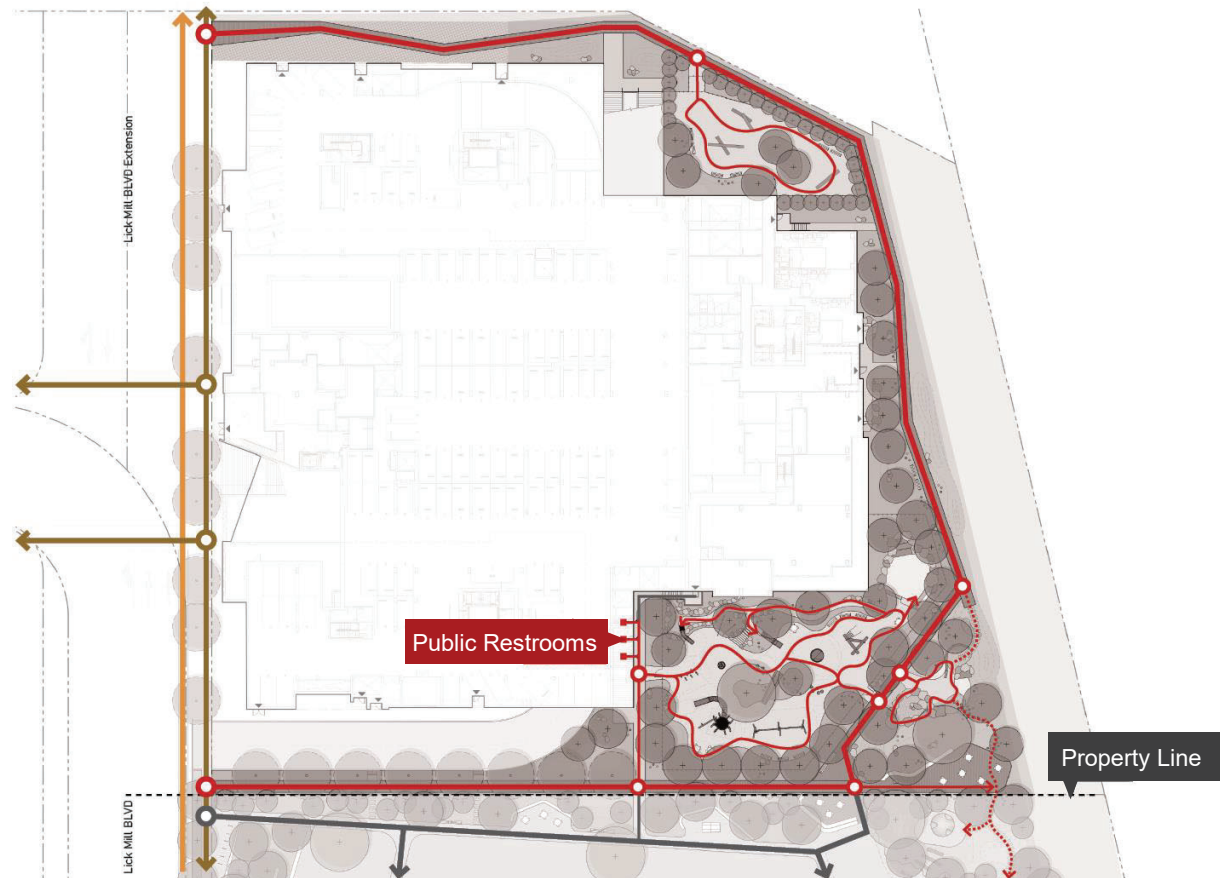


4. Circulation

Walking and Running Path

• Legend

-  Public Sidewalk (**ADA Accessible**)
-  Public Bike Path
-  Main Park Pathway (**ADA Accessible**)
-  Garden Path (**ADA Accessible**)
-  Future Path Extension to South
-  Steppingstones & Wood Logs
-  Point of Connection
-  Greenway Access Point
-  Public Restrooms





4. Circulation

Universal Access



An accessible central pad allows visitors to enjoy the different natural materials



All inclusive play equipment are accessible along an ADA loop, including the hilltop slides (hilltop path as shown above)



Community Outreach

- August 15, 2023 – Parks & Recreation Commission Meeting
- August 18 – September 10, 2023 – Community Survey
- October 17, 2023 – Parks & Recreation Commission Meeting



Public Input

- **Shade and Planting** - the Park features an extensive tree canopy with 50+ trees and climate-ready native plants.
- **Park Lighting** - lighting throughout the park include overhead light poles, bollards, and tree uplighting fixtures.
- **Gathering Spaces** – ample seating is provided throughout the park.
- **Circulation** – a continuous path forms a continuous quarter-mile loop and weaves through the park and links to the larger open space network within Tasman East.



Commission Consideration

- Receive Public Comment
- Make Recommendation:
 - That Council approve the proposed Schematic Design – Master Plan for the New Public Neighborhood Park at 2200 Calle Del Luna