



Parks & Recreation Commission Meeting

**23-1557. Item #2. Consideration of
the proposed Schematic Design -
Master Plan for a New Public Mini
Park at 3000 Patrick Henry Drive
(SummerHill)**

January 17, 2023

Background

Patrick Henry Drive Specific Plan

- Urban Design Framework
- Parks & Active Recreational Amenities
 - Community/Civic
 - Mini-Park (art related)

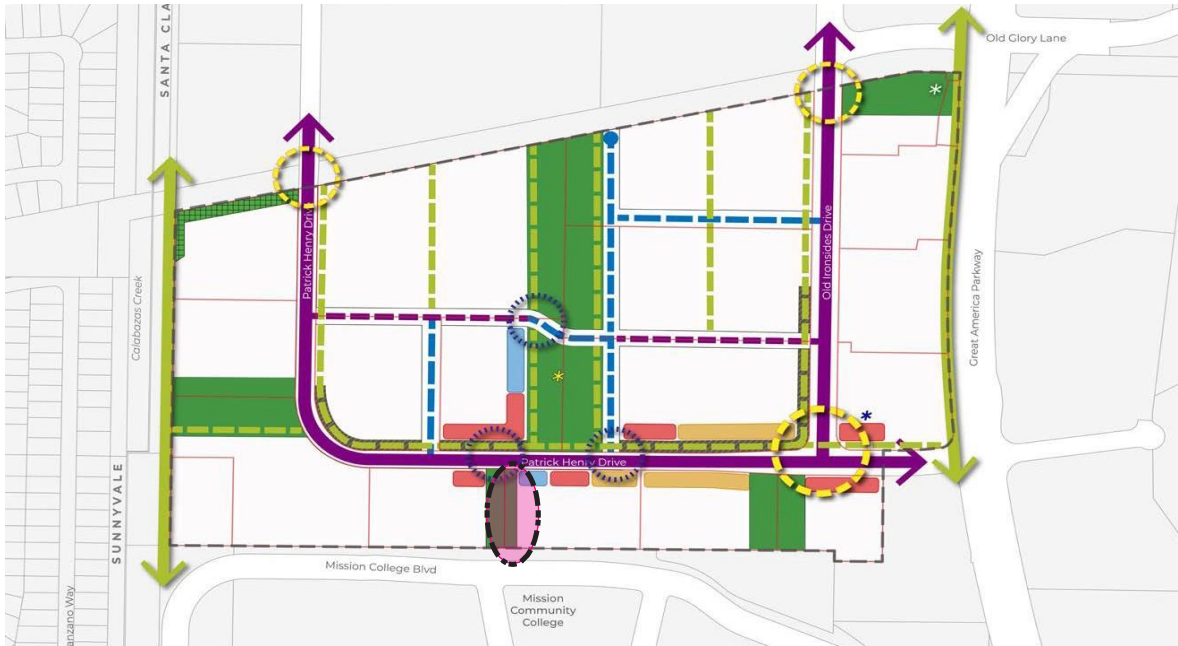
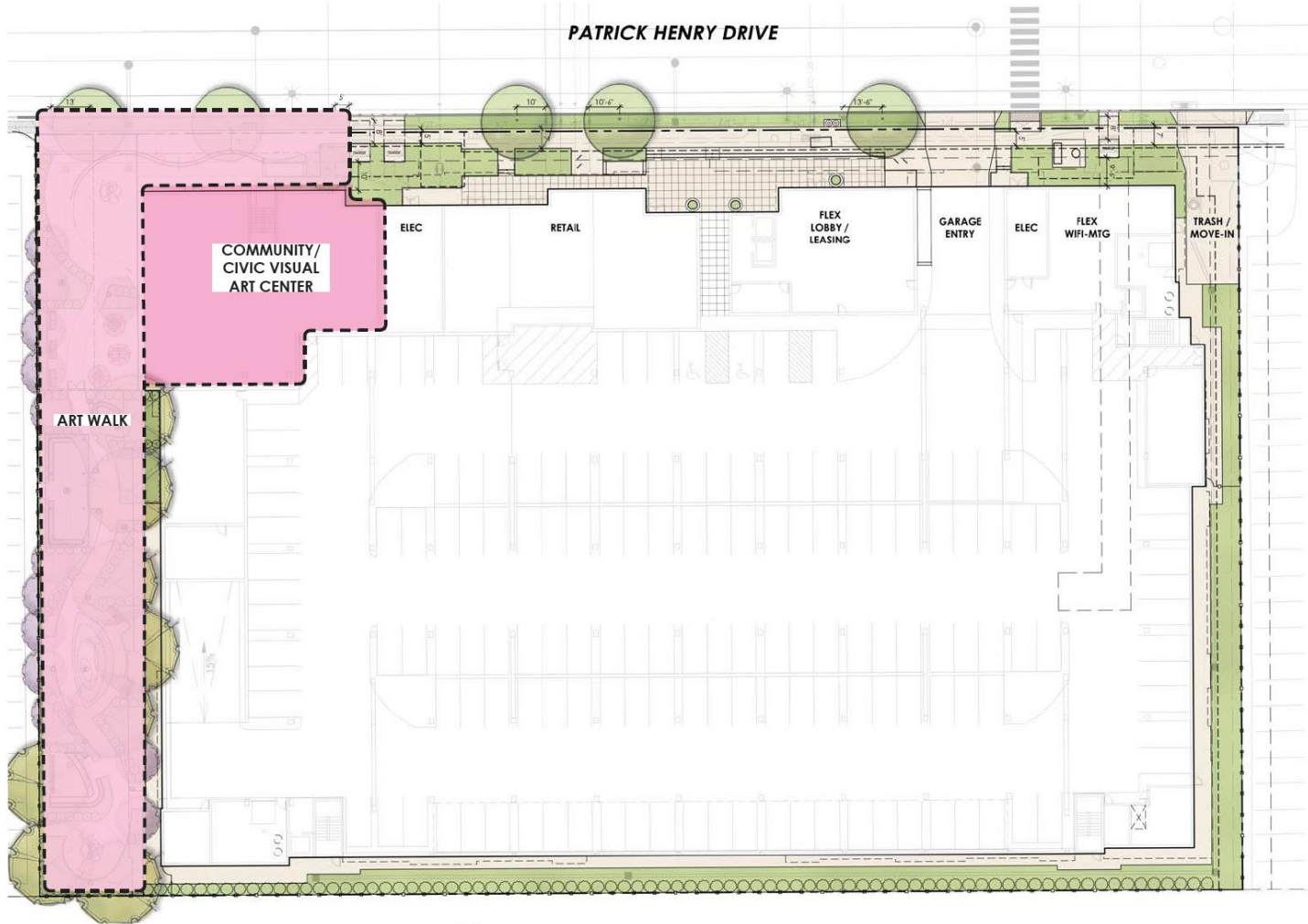


FIGURE 4.2: URBAN DESIGN FRAMEWORK



PATRICK HENRY DRIVE



COMMUNITY/
CIVIC VISUAL
ART CENTER

ART WALK

ELEC

RETAIL

FLEX
LOBBY /
LEASING

GARAGE
ENTRY

ELEC

FLEX
WIFI-MTG

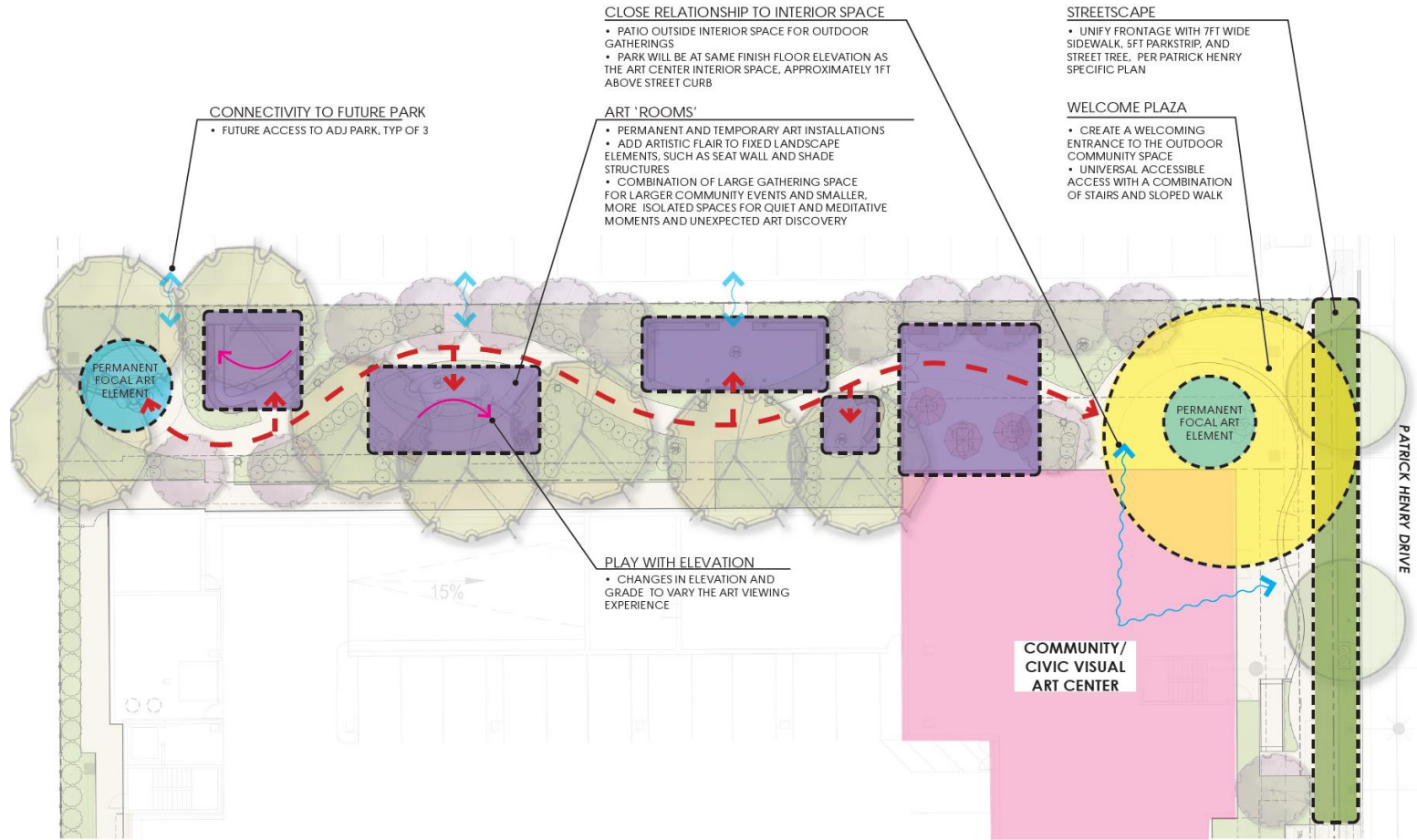
TRASH /
MOVE-IN

15'-0"

10'-0"

10'-0"

13'-0"



CLOSE RELATIONSHIP TO INTERIOR SPACE

- PATIO OUTSIDE INTERIOR SPACE FOR OUTDOOR GATHERINGS
- PARK WILL BE AT SAME FINISH FLOOR ELEVATION AS THE ART CENTER INTERIOR SPACE, APPROXIMATELY 1FT ABOVE STREET CURB

STREETSCAPE

- UNIFY FRONTAGE WITH 7FT WIDE SIDEWALK, 5FT PARKSTRIP, AND STREET TREE, PER PATRICK HENRY SPECIFIC PLAN

CONNECTIVITY TO FUTURE PARK

- FUTURE ACCESS TO ADJ PARK, TYP OF 3

ART 'ROOMS'

- PERMANENT AND TEMPORARY ART INSTALLATIONS
- ADD ARTISTIC FLAIR TO FIXED LANDSCAPE ELEMENTS, SUCH AS SEAT WALL AND SHADE STRUCTURES
- COMBINATION OF LARGE GATHERING SPACE FOR LARGER COMMUNITY EVENTS AND SMALLER, MORE ISOLATED SPACES FOR QUIET AND MEDITATIVE MOMENTS AND UNEXPECTED ART DISCOVERY

WELCOME PLAZA

- CREATE A WELCOMING ENTRANCE TO THE OUTDOOR COMMUNITY SPACE
- UNIVERSAL ACCESSIBLE ACCESS WITH A COMBINATION OF STAIRS AND SLOPED WALK

PLAY WITH ELEVATION

- CHANGES IN ELEVATION AND GRADE TO VARY THE ART VIEWING EXPERIENCE

**COMMUNITY/
CIVIC VISUAL
ART CENTER**

PATRICK HENRY DRIVE

15%

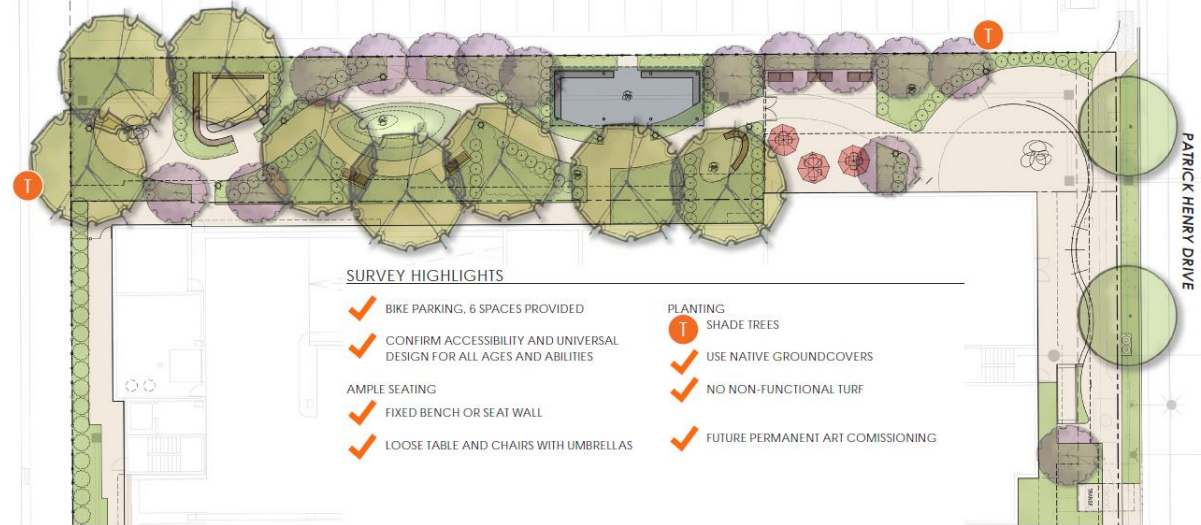
PERMANENT
FOCAL ART
ELEMENT

PERMANENT
FOCAL ART
ELEMENT

INITIAL SCHEMATIC DESIGN



SCHEMATIC DESIGN - MASTER PLAN





LEGEND

- ① PERMANENT ART, TYP OF 2
- ② FUTURE ACCESS TO ADJ PARK, TYP OF 3
- ③ SMALL ART "ROOM" WITH SEAT WALL AND CENTRALIZED LOCATION FOR ART
- ④ TEMPORARY ART LOCATIONS, TYP OF 5
- ⑤ 6FT MAX PERIMETER FENCE WITH 2FT MAX RETAINING WALL, TO MATCH ADJACENT SITE IMPROVEMENTS.
- ⑥ COVERED PAVILION WITH SEAT WALLS AND LOCATIONS FOR TEMPORARY ART (37' X 14')
- ⑦ APPROX. END OF SLOPED WALK AND STAIRS. AT THIS POINT PATIO ADJ TO COMMUNITY ROOM AND PARK IS LEVEL.
- ⑧ SLOPED WALK ENTRY
- ⑨ FEATHERED STEPS (2 RISERS REQ'D)
- ⑩ STAIRS AND HANDRAILS (2 RISERS REQ'D)
- ⑪ BIKE RACKS, TOTAL OF 6 BICYCLES SPACES
- ⑫ RAMP AND HANDRAILS
- ⑬ PUBLIC PLAZA SPACE
- ⑭ 4FT HIGH UNIFORM HEDGE, TYP PLANT SPECIES WILL BE SELECTED WITH UNIFORM GROWING HABIT AND REQUIRE MINIMUM MAINTENANCE TO ACHIEVE DESIRED SIZE AND FORM.
- ⑮ SEMI-PRIVATE FLEXIBLE SPACE FOR CLASSES AND ART CENTER ACTIVITIES (31' X 28')
- ⑯ GATEWAY WITH LOCKABLE DOUBLE GATE AND OPEN METAL FENCING
- ⑰ 6FT WIDE EGRESS PATHWAY
- ⑱ FIRE ACCESS CONNECTION, TYP OF 2
- ⑲ VEGETATED MOUND WITH LOCATION FOR ART
- ⑳ REFUSE AND RECYCLE RECEPTACLES
- ㉑ SUNKEN ART ROOM WITH PERMANENT PROJECTION PANEL. PANEL CAN BE USED FOR MOUNTED ART WHEN NOT USED FOR PROJECTIONS. (16' X 16')
- ㉒ BOLLARD LIGHT, TYP
- ㉓ LOCATION FOR A-FRAME SIGN OR BANNER
- ㉔ BENCH, TYP

NOTE: LOCKED CONVENIENCE OUTLETS WILL BE PROVIDED THROUGHOUT THE ART PARK.



PRELIMINARY PLANT PALETTE

SYMBOL	BOTANICAL NAME	COMMON NAME	CONT SIZE	SPACING	CA NATIVE	WTR USE
	CERCIS CANADENSIS	EASTERN REDBUD	36" BOX	PIR PLAN	N	M

SHADE TREES - OVER 25' CANOPY WIDTH						
	ACER RUBRUM 'RED SUNSET'	RED SUNSET RED MAPLE	36" BOX	PIR PLAN	N	M
	LOPHOSYTOMON CONFERTUS	BIRSBAME BOX	36" BOX	PIR PLAN	N	M
	QUERCUS AGRIFOLIA	LIVE OAK	36" BOX	PIR PLAN	Y	VL
	ULMUS PARVIFOLIA 'TRUE GREEN'	TRUE GREEN ELM	36" BOX	PIR PLAN	N	L

ACCENT SHADE TREES - UP TO 25' CANOPY WIDTH						
	ARBUTUS 'MARINA'	STRAWBERRY TREE	36" BOX	PIR PLAN	N	L
	LAGOTISROMA NATCHEZ	FLOWERING WHITE CRAPE MYRTLE	36" BOX	PIR PLAN	N	L
	PRUNUS SERRULATA 'MT FUJI'	MT FUJI JAPANESE BLOSSOMING CHERRY	36" BOX	PIR PLAN	N	M

SHRUBS, GRASSES & PERENNIALS						
	ACACIA COGNATA 'COUSIN ITT'	LITTLEEVER WATTLE	5 GAL	4.0' OC	N	L
	ACHILLEA 'MOONSHINE'	MOONSHINE YARROW	1 GAL	2.0' OC	Y	L
	AEONIUM D. 'SUNBURST'	COPPER PINNACEL	1 GAL	1.6" OC	N	L
	AGAVE ATTENUATA 'NOVA'	BLUE COXAL AGAVE	5 GAL	3.0' OC	N	L
	ANIGOZANTHOS 'BUSH PEARL'	KANGAROO PINKS	5 GAL	2.0' OC	N	L
	ARCTOSTAPHYLOS X HOWARD MCNAMRY	HOWARD MCNAMR MANGNANTA	5 GAL	5.0' OC	Y	L
	ASPIDISTRA ELAIOR	CAST IRON PLANT	1 GAL	3.0' OC	N	L
	CALCESTRAMON 'LITTLE JOHN'	DWARF CALCESTRAMON	1 GAL	4.0' OC	N	L
	CEANOTHUS SKYLARK	WILD LILAC	1 GAL	3.0' OC	Y	L
	CORREA 'WINNS WONDER'	AUSTRALIAN FUCHSIA	1 GAL	3.0' OC	N	L
	DIETS BICOLOR	FORTNIGHT LILY	5 GAL	3.0' OC	N	L
	DODONAEA V. 'PURPUREA'	HOP HOP	5 GAL	4.0' OC	N	L
	DRELLA X 'NOBEL'	GREVILLEA	5 GAL	4.0' OC	N	L
	HESPERALOE PARVIFOLIA	RED YUCCA	5 GAL	4.0' OC	N	L
	KNIPHOFIA LIVARIA 'BLAZE'	RED HOT POKER	1 GAL	3.0' OC	N	L
	LANTANA MONTEVIDENSIS	LANTANA	5 GAL	3.0' OC	N	L
	LEUCOPHYLLUM FRUTESCENS 'COMPACTA'	TEXAS RANGER	5 GAL	5.0' OC	N	L
	LEYMUS C. 'CANYON PRINCE'	CANYON PRINCE WILD RYE	1 GAL	2.0' OC	Y	L
	LIBERTIA PERGRANS	ORANGE LIBERTIA	1 GAL	3.0' OC	N	L
	LOMANDRA L. 'BREEZE'	DWARF MAI RUSH	1 GAL	3.0' OC	N	L
	LOROPETALUM CHINENSE 'SHANG-WHITE'	EMERALD SNOW 'FRINGE FLOWER'	5 GAL	4.0' OC	N	L
	MAIONIA AQUIFOLIUM	HOLLY LEAF BARBERY	5 GAL	3.0' OC	Y	L
	MIHENBERGIA DURIA	PINE HULKY	5 GAL	2.4' OC	Y	L
	PHORMIUM SPECIES	NEW ZEALAND FLAX	5 GAL	VARRIES	N	L
	PITTOSPORIUM TENUIFOLIUM 'GOLF BALL'	GOLF BALL PITTOSPORIUM	5 GAL	4.0' OC	N	L
	PITTOSPORIUM TOBIRA 'VARIEGATA'	VARRIEGATED MOCK ORANGE	5 GAL	4.0' OC	N	L
	POSARINUS TUSCAN BLUE	ROSEMARY	5 GAL	4.0' OC	N	L
	SALVIA LEUCANTHA 'SANTA BARBARA'	MEXICAN BUSH SAGE	5 GAL	4.0' OC	Y	M
	SANTOLINA CHAMAECYPARISSIS	GRAY LAVENDER COTTON	1 GAL	3.0' OC	N	L
	SOLIVA HETEROPHYLLA	AUSTRALIAN RUMBELL	5 GAL	3.0' OC	N	L
	ARCTOSTAPHYLOS EMERALD CARPET	CARPET MANGAARIA	1 GAL	4.0' OC	Y	L
	CEANOTHUS 'YANKEE POINT'	CALIFORNIA LILAC	1 GAL	4.0' OC	Y	L
	CISTUS L. PROSTRATUS	SAGE LEAF ROCKROSE	1 GAL	4.0' OC	Y	L
	HELICONIA MARIKA	ISLAND ALUM ROOT	1 GAL	3.0' OC	N	M
	MYRTORUM PARVIFOLIA	MYRTORUM	1 GAL	4.0' OC	N	L
	SEDUM PALMERI	STONECROP	1 GAL	1.6" OC	N	L
	SENECIO SERPENS	BLUE CHALK BRICK	1 GAL	2.0' OC	N	L
	STACHYS BYZANTINA	LAMB EAR	1 GAL	1.6" OC	N	L

GROUND COVER						
	LOROPETALUM 'SHANG-WHITE'	PITTOSPORIUM 'GOLF BALL'	1 GAL	4.0' OC	N	L
	PITTOSPORIUM 'GOLF BALL'	SANTOLINA CHAMAECYPARISSUS	1 GAL	4.0' OC	N	L
	SANTOLINA CHAMAECYPARISSUS	SEDUM PALMERI	1 GAL	4.0' OC	N	L
	SEDUM PALMERI	SENECIO SERPENS	1 GAL	4.0' OC	N	L
	SENECIO SERPENS	STACHYS BYZANTINA	1 GAL	4.0' OC	N	L
	STACHYS BYZANTINA		1 GAL	4.0' OC	N	L

PLANT IMAGERY



CERCIS CANADENSIS



ACER RUBRUM



QUERCUS AGRIFOLIA



ARBUTUS 'MARINA'



WHITE FLOWER CRAPE MYRTLE



MT FUJI FLOWER CHERRY



ACACIA C. 'COUSIN ITT'



ACHILLEA 'MOONSHINE'



AEONIUM D. 'SUNBURST'



AGAVE ATTENUATA 'NOVA'



ANIGOZANTHOS 'BUSH PEARL'



ASPIDISTRA ELAIOR



DIETS BICOLOR



DODONAEA V. 'PURPUREA'



HESPERALOE PARVIFOLIA



LANTANA MONTEVIDENSIS



LEYMUS C. 'CANYON PRINCE'



LOMANDRA L. 'BREEZE'



LOROPETALUM 'SHANG-WHITE'



PITTOSPORIUM 'GOLF BALL'



SANTOLINA CHAMAECYPARISSUS



SEDUM PALMERI



SENECIO SERPENS



STACHYS BYZANTINA

Community Outreach

- November 15, 2022 – Parks & Recreation Commission Meeting
- November 16 - December 13, 2022 - Community Survey
- December 6, 2023 – Community Meeting related to housing development
- December 12, 2023 - Community Meeting related to park design
- January 17, 2023 – Parks & Recreation Commission Meeting



Public Input

Highlights

- Provide Bicycle Parking - 6 spaces provided
- Confirm Accessibility and Universal Design for all Ages and Abilities
- Provide Ample shaded Seating
 - Fixed Bench or Seat Wall
 - Loose Table and Chairs with Umbrellas
- Landscape
 - Provide adequate Shade Trees
 - Use Native Groundcovers
 - No Non-functional Turf
- Future Commissioning of Permanent Art



Commission Consideration

- Receive Public Comment
- Make Recommendation:
that Council approve the proposed Schematic Design – Master Plan for the New Public Mini Park at 3000 Patrick Henry Drive

