



Parks & Recreation Commission Meeting

**Consideration of the Schematic Design-Master
Plan for the New Public Neighborhood Park
proposed to be located at 1205 Coleman
Avenue (Gateway Crossings Hunter Storm &
Holland Partner Group Residential Project)**

April 19, 2022

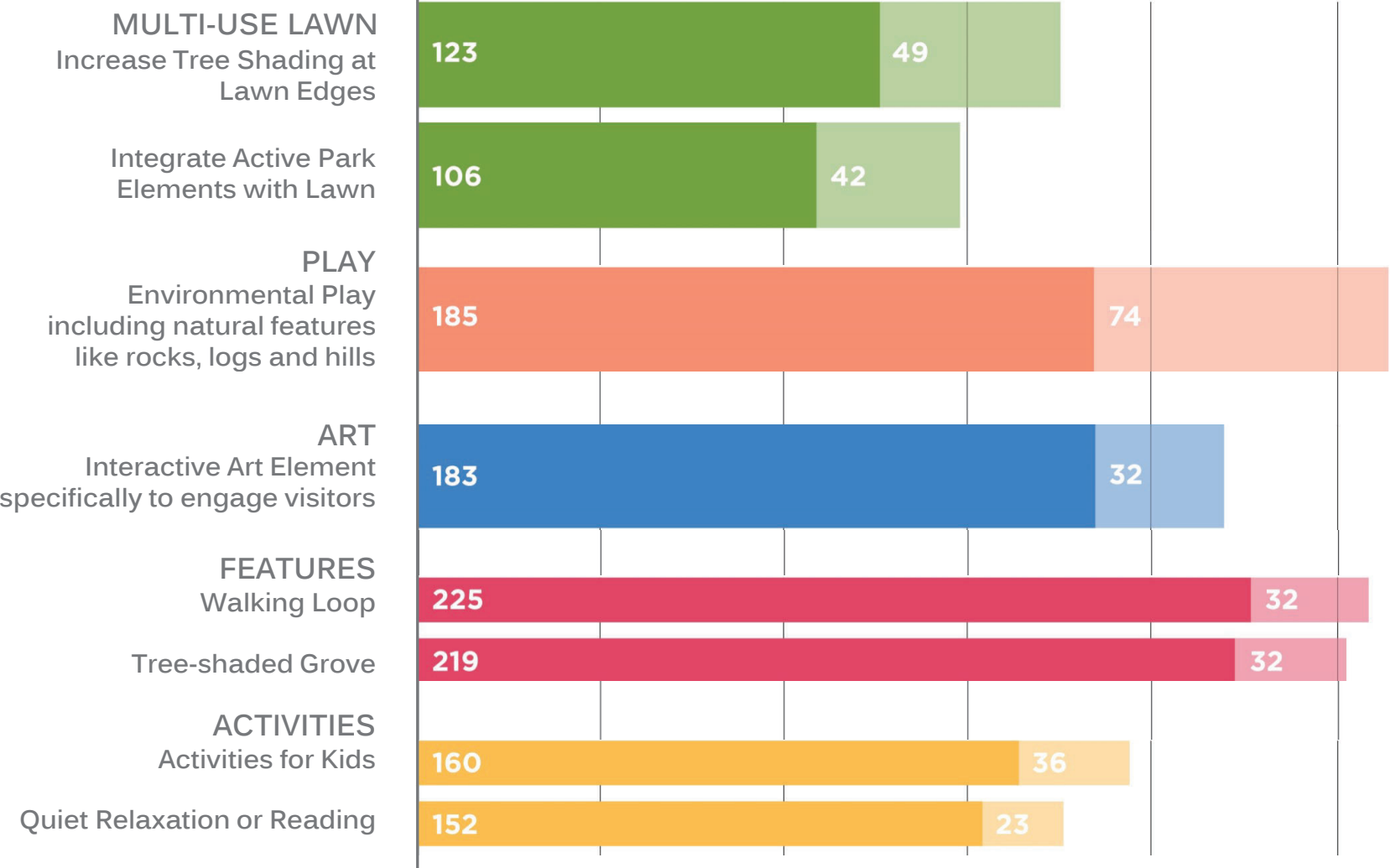


Background

- Council Goal: Enhance community sports, recreational and arts assets
- Neighborhood Park Schematic Design October 15, 2019
- Community Presentation July 7, 2021
- Commission Presentation July 20, 2021
- Schematic Design Presentation for November 16, 2021
- April 19, 2022 – Commission Review & Approval

COMMUNITY PRIORITIES

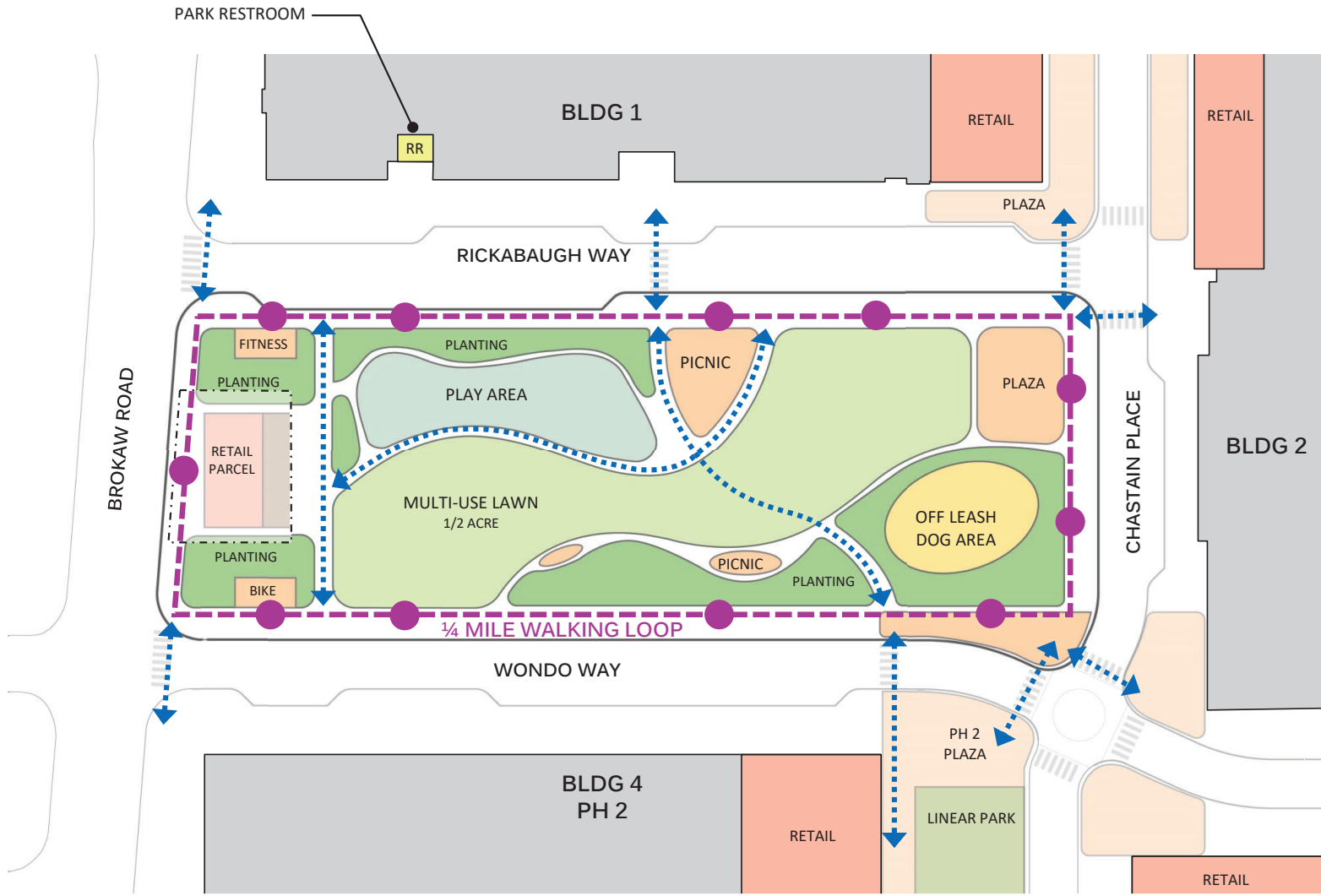
+/- 400 COMMUNITY RESPONSES





- PARKING**
- 24 ON-STREET PARKING STALLS
 - BLDG 1 GARAGE
 - 59 SHARED PARKING STALLS
 - BLDG 2 GARAGE
 - 104 SHARED PARKING STALLS





PARK RESTROOM








PARK PROGRAM

- MULTI-USE LAWN ½ ACRE
 - SHADE/PICNIC PAVILION
 - ENV. PLAY AREA (2-5) (6-12)
 - OUTDOOR FITNESS NODE
 - OFF LEASH DOG AREA
 - FAMILY PICNIC AREA
 - PARK-WIDE SHADED GROVE
 - AMPLE SHADED SEATING
 - QUIET AREAS TO RELAX / READ
 - DISPLAY GARDENS
 - WALKING LOOP ¼ MILE
 - PLAZAS AT RETAIL CORNERS
 - RESTROOM IN BUILDING 1
 - ON-STREET + GARAGE PARKING
-
- PARK ELEMENTS IDENTIFIED WITHIN PARK & REC ORDINANCE





-  STREET LIGHT
-  POLE LIGHT AT PATH
-  POLE LIGHT AT PROGRAM ELEMENT
-  POLE LIGHT MULTI-HEAD
-  ACCENT LIGHT







Quercus rubra | RED OAK
Height: 60-75'
Deciduous, Fast Growth Rate



Quercus virginiana | SOUTHERN LIVE OAK
Height: 40-60'
Evergreen, Fast Growth Rate



Podocarpus gracilior | FERN PINE
Height: 30-65'
Evergreen, Moderate Growth Rate



Ulmus parvifolia 'Drake' | CHINESE ELM
Height: 40-50'
Partly Deciduous, Fast Growth Rate



Heteromeles arbutifolia | TOYON
Height: 15'
Evergreen, Slow Growth Rate



Acer r. 'October Glory' | RED MAPLE
Height: 40-50'
Deciduous, Fast Growth Rate



Arbutus 'Marina' | MARINA MADRONE
Height: 30-50'
Evergreen, Moderate Growth Rate



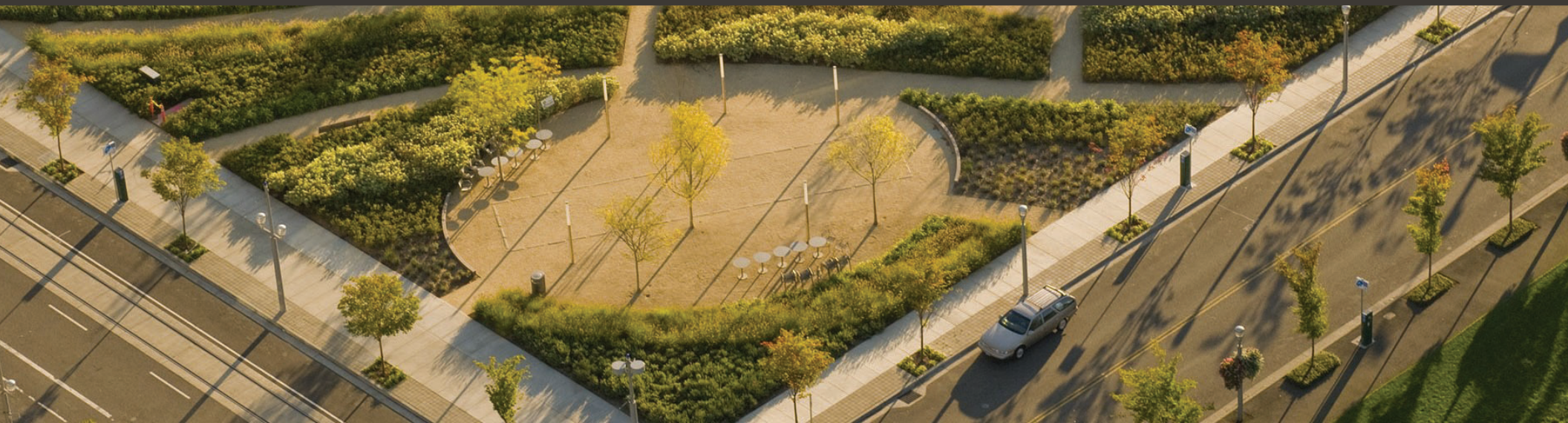
Pistacia c. 'Keith Davey' | CHINESE PISTACHE
Height: 25-40'
Deciduous, Moderate Growth Rate





PETERSEN STUDIO

OFF-LEASH DOG AREA 4,600 SF – ARTIFICIAL TURF



PETERSEN STUDIO

OFF-LEASH DOG AREA



PETERSEN STUDIO

SHADED LAWN WITH PICNIC PAVILION AND GARDEN ENCLOSED PICNIC AREA



PETERSEN STUDIO

SHADED LAWN WITH PICNIC PAVILION AND GARDEN ENCLOSED PICNIC AREA





PETERSEN STUDIO

ENVIRONMENTAL PLAY (AGE 6-12)



PETERSEN STUDIO

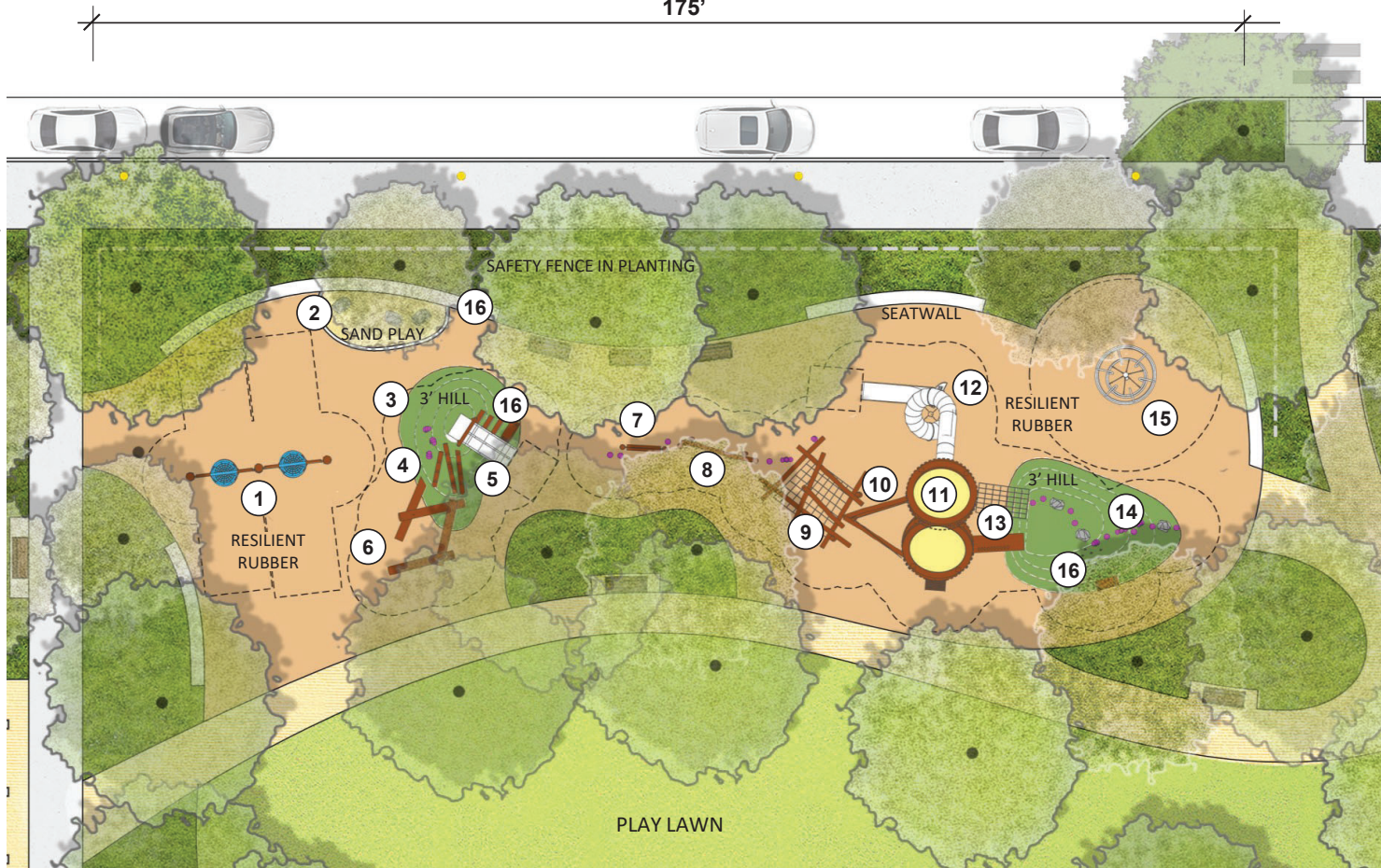
ENVIRONMENTAL PLAY (AGE 2-5)



175'

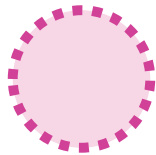
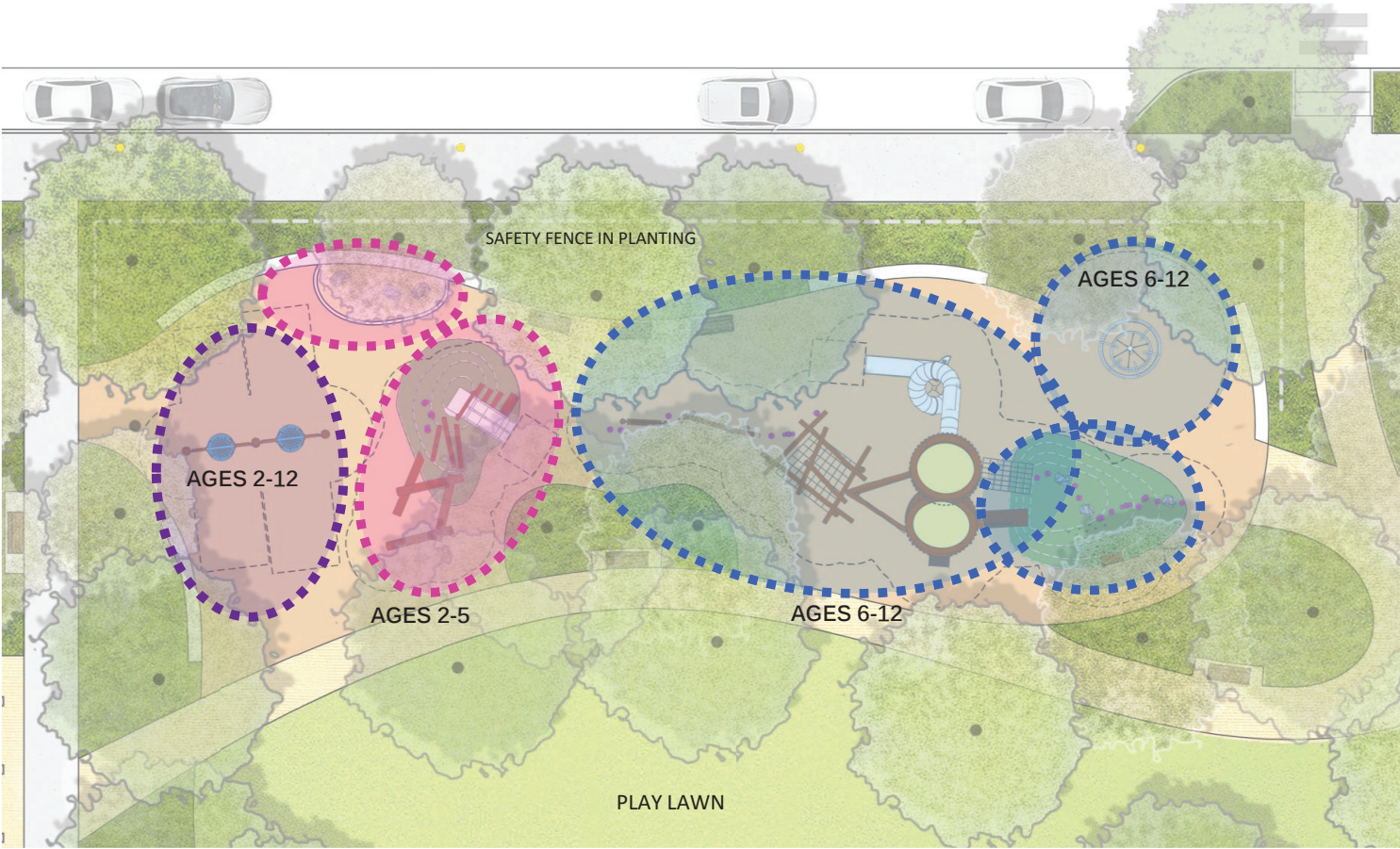
PLAY FEATURES

- ① DOUBLE BASKET SWING
- ② SAND PLAY
- ③ WEST HILL RESILIENT TURF
- ④ PLAY POSTS / NOTCHED LOGS
- ⑤ HILL SLIDE
- ⑥ LOG PILE
- ⑦ LOG SPIN
- ⑧ TRAVERSE RINGS
- ⑨ M4 LOG JAM
- ⑩ POST & ROPE CLIMBER
- ⑪ ROUND TOWERS
- ⑫ SPIRAL TUBE SLIDE
- ⑬ NET & FLEX FORM CLIMBER
- ⑭ STEPPER TRAIL ON EAST HILL
- ⑮ SPINNEROUND SPINNER
- ⑯ TRANSFER BENCH

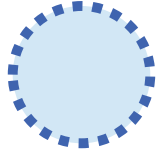


60'

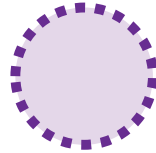
PLAY AGE ZONES



AGES 2-5



AGES 6-12



AGES 2-12



1 DOUBLE BASKET SWING
Age Group: 2-5, 6-12
Capacity: 8



5 HILL SLIDE
Age Group: 2-5
Capacity: 4



7 LOG SPIN
Age Group: 6-12
Capacity: 1



8 TRAVERSE RINGS
Age Group: 6-12
Capacity: 4



9 M4 LOG JAM
Age Group: 6-12
Capacity: 18



10 POST & ROPE CLIMBER
Age Group: 6-12
Capacity: 4



11 ROUND TOWERS WITH TUBE SLIDE
Age Group: 6-12
12 Capacity: 25



14 SPINNEROUND SPINNER
Age Group: 6-12
Capacity: 18

Elements of Play	AGES 2-5			AGES 6-12			Total Playground Capacity
	Levels of Play	Description	Capacity (Ages 2-5)*	Levels of Play	Description	Capacity (Ages 6-12)*	
BALANCING	B,I	Log Steppers Bog Stilts Log Pile	1 2	B,I,A	Log Steppers Bog Stilts Notched Play Posts Boulders Log Roll Log Jam Net access to tower Post & Rope tower access	1 2 2 1 1 18	28
SLIDING	B	Hill Slide	4	B,I,A	Tower Tube Slide	2	6
BRACHIATING	B,I,A	Play posts with hand holds	3	I,A	Log Jam Traverse Rings Post & Rope tower access Internal Tower Nets Tower Interior Play Log Roll	4 4 5 per net (interior)	16
SPINNING	0		0	I,A	Spinneround Spinner	18	18
CLIMBING	B,I	Log Pile Horizontal Notched Logs Play posts with hand holds	12 4	B,I,A	Post & Rope - Grid Tower Interior Play Climbing Holds on tower Net access to tower Transfer bench & hand holds to tower Log Jam	3 25 (5 per level (interior)) 4 (2 per climbing wall) 4	52
SWINGING	B,I	Double Basket Swing	4	B,I,A	Double Basket Swing Loveseat Swing Traverse Rings Post & Rope tower access	4 3	11
RUNNING / FREE PLAY	B,I,A	Adjacent Play Lawn* +/- 6,500 SF	45	B,I,A	Adjacent Play Lawn* +/- 6,500 SF	85	130
TOTAL:			75			186	261
INCLUSIVE PLAY ELEMENTS		Hill Slide Sand Play Log Pile Basket Swing	2 8 12 4		Magnetic Abacus Net access to tower Transfer bench & hand holds, Basket Swing Loveseat Swing	4 4 2 4 3	43

*Free Play capacity @ 50 SF/person



THANK YOU



Recommendation

- Recommend that City Council approve the proposed Schematic Design-Master Plan for the New Public Neighborhood Park located at 1205 Coleman Avenue (Gateway Crossings Project).