

**Developer Presentation
SummerHill Apartment Communities
Proposed Schematic Design for New Public Mini-Park
3000 Patrick Henry Drive
Patrick Henry Drive Specific Plan**

**City of Santa Clara
Parks & Recreation Commission
November 15, 2022
#22-1356**

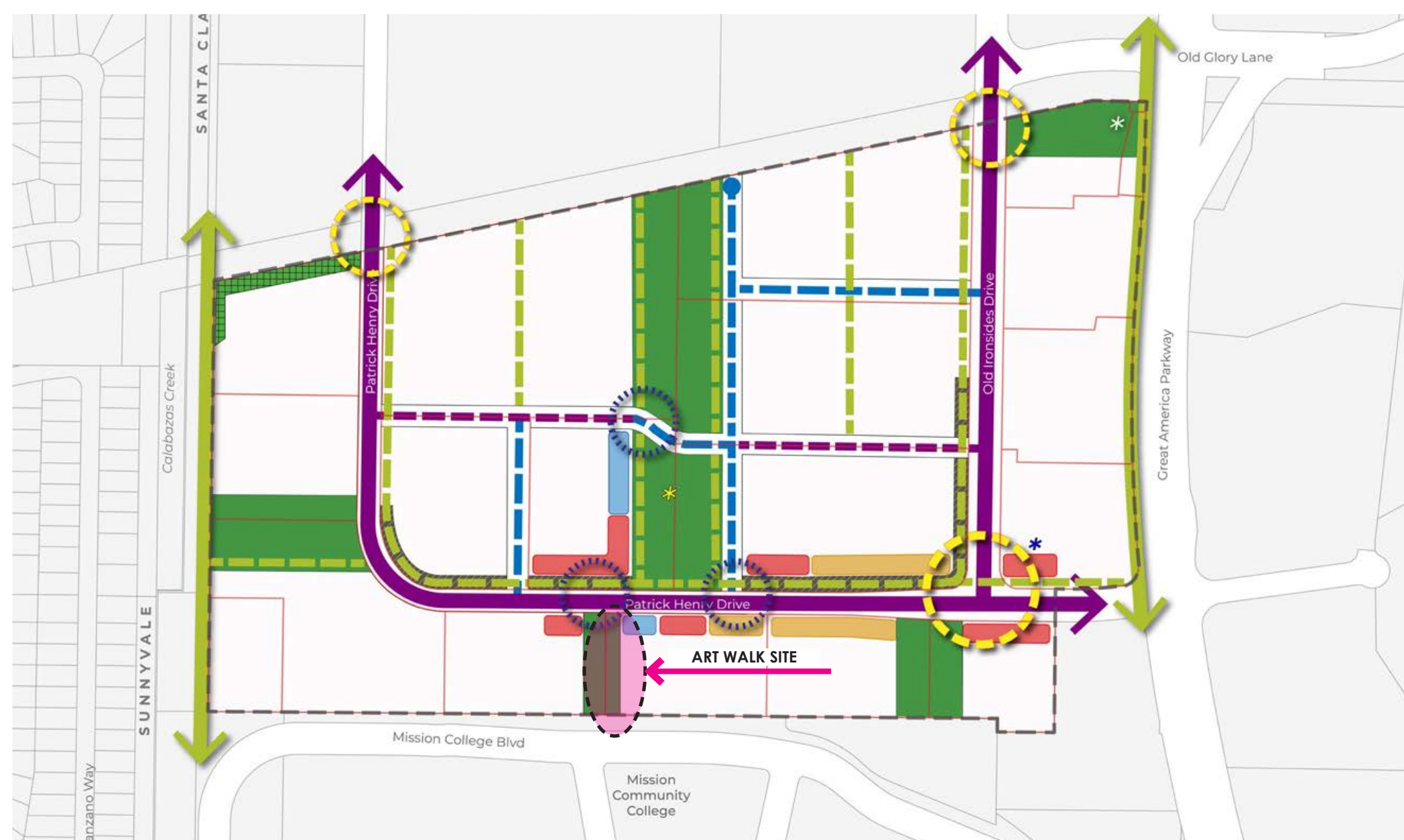
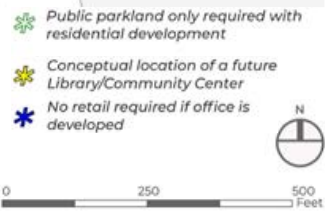
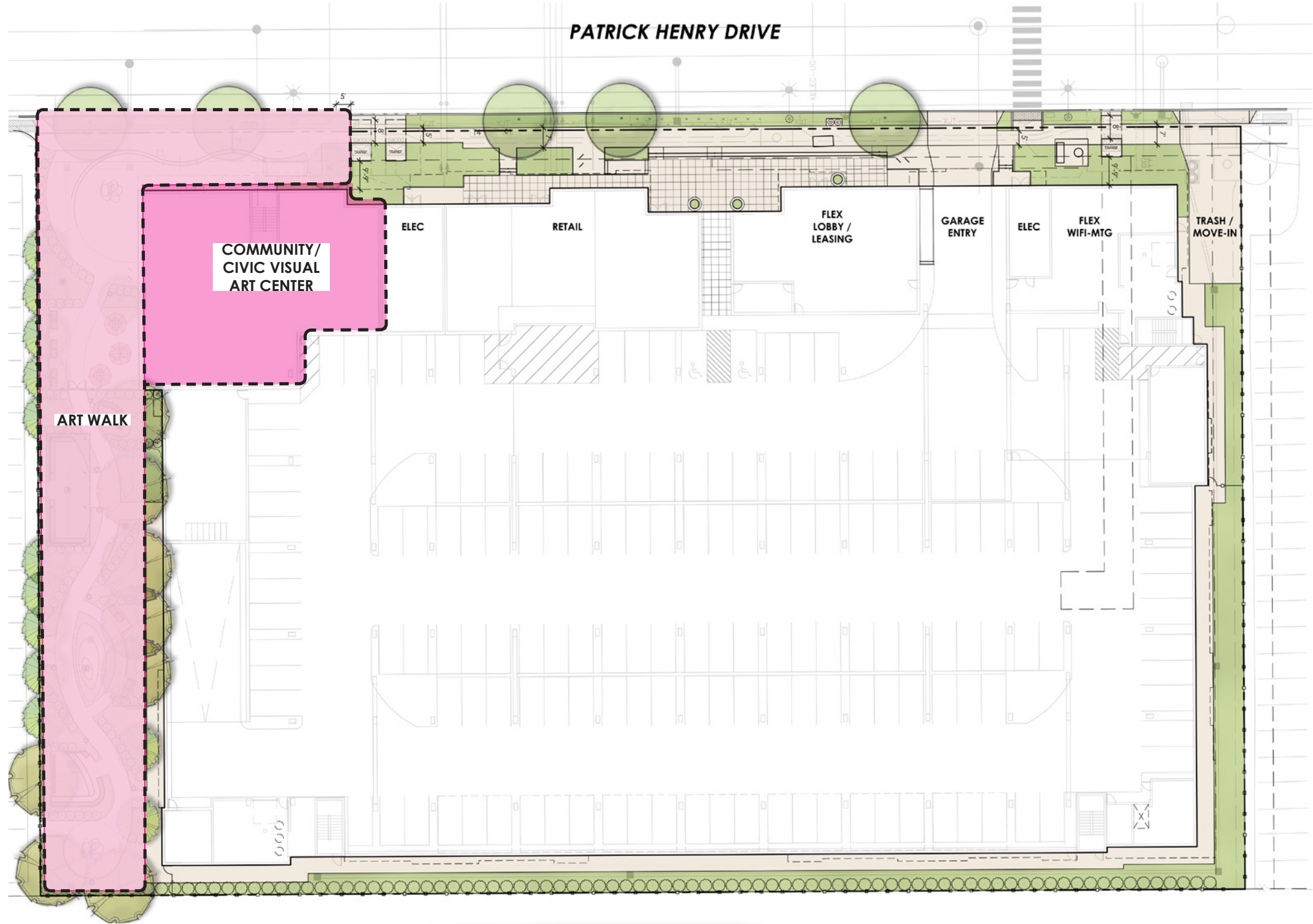


FIGURE 4.2: URBAN DESIGN FRAMEWORK



PATRICK HENRY DRIVE



ART WALK

COMMUNITY / CIVIC VISUAL ART CENTER

ELEC

RETAIL

FLEX LOBBY / LEASING

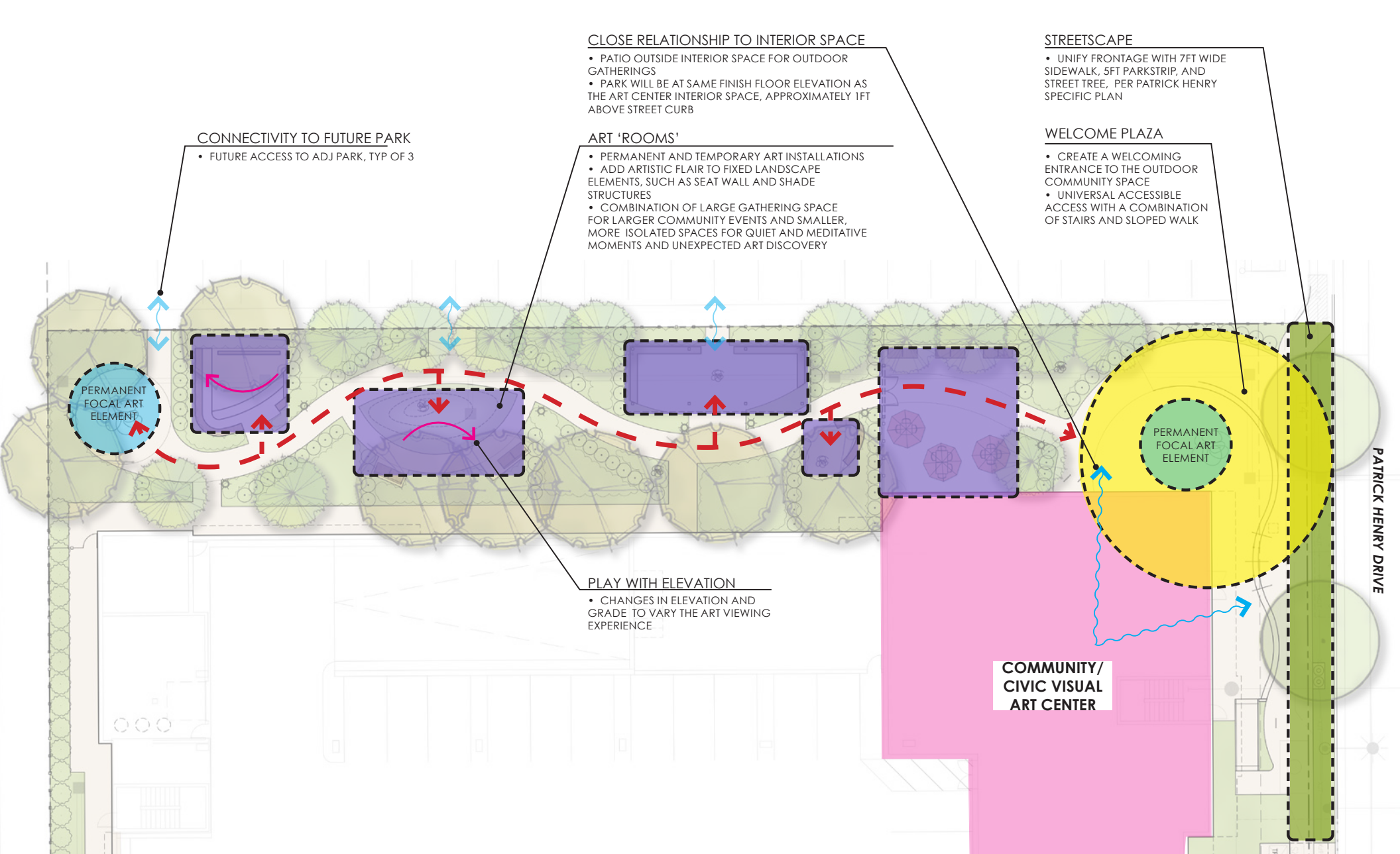
GARAGE ENTRY

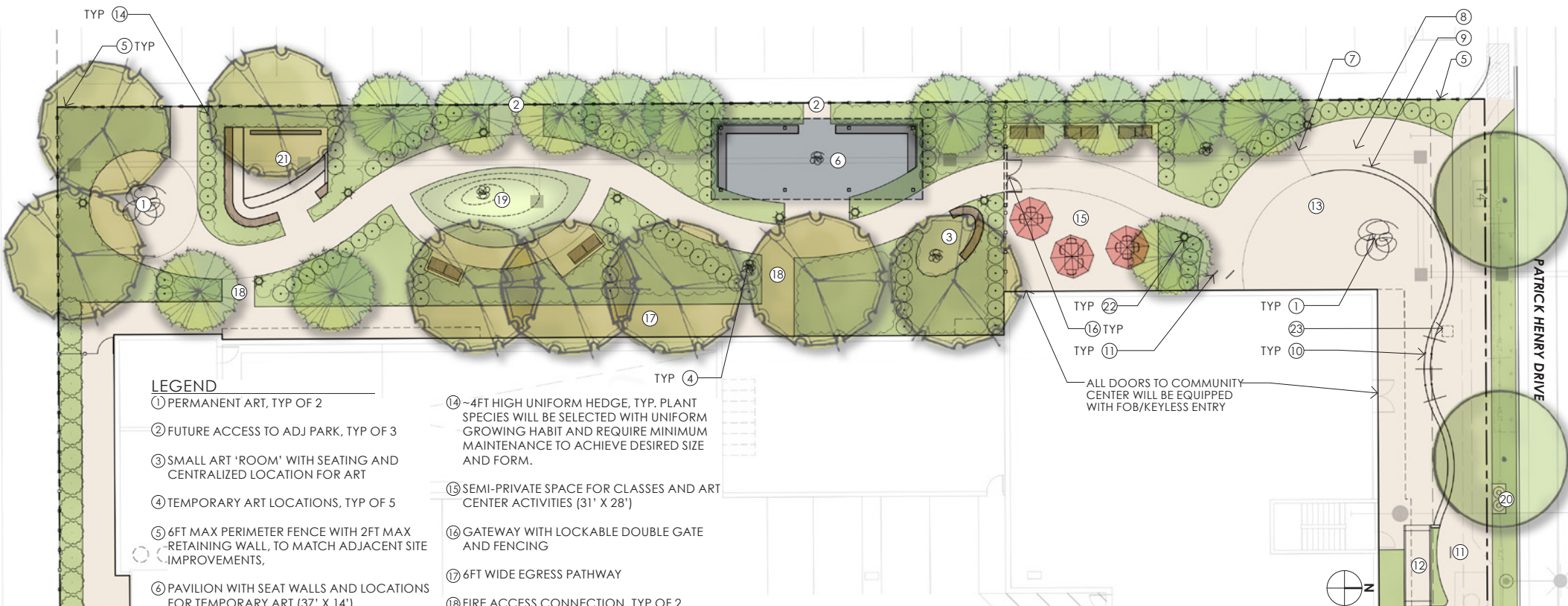
ELEC

FLEX WIFI-MTG

TRASH / MOVE-IN





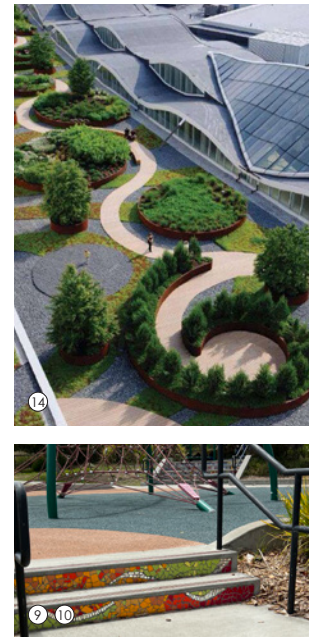
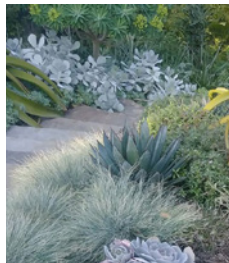


LEGEND

- ① PERMANENT ART, TYP OF 2
- ② FUTURE ACCESS TO ADJ PARK, TYP OF 3
- ③ SMALL ART 'ROOM' WITH SEATING AND CENTRALIZED LOCATION FOR ART
- ④ TEMPORARY ART LOCATIONS, TYP OF 5
- ⑤ 6FT MAX PERIMETER FENCE WITH 2FT MAX RETAINING WALL, TO MATCH ADJACENT SITE IMPROVEMENTS,
- ⑥ PAVILION WITH SEAT WALLS AND LOCATIONS FOR TEMPORARY ART (37' X 14')
- ⑦ APPROX. END OF SLOPED WALK AND STAIRS. AT THIS POINT PATIO ADJ TO COMMUNITY ROOM AND PARK IS LEVEL.
- ⑧ SLOPED WALK ENTRY
- ⑨ FEATHERED STEPS (2 RISERS REQ'D)
- ⑩ STAIRS AND HANDRAILS (2 RISERS REQ'D)
- ⑪ BIKE RACKS, TYP
- ⑫ RAMP AND HANDRAILS
- ⑬ PUBLIC PLAZA SPACE
- ⑭ ~4FT HIGH UNIFORM HEDGE, TYP. PLANT SPECIES WILL BE SELECTED WITH UNIFORM GROWING HABIT AND REQUIRE MINIMUM MAINTENANCE TO ACHIEVE DESIRED SIZE AND FORM.
- ⑮ SEMI-PRIVATE SPACE FOR CLASSES AND ART CENTER ACTIVITIES (31' X 28')
- ⑯ GATEWAY WITH LOCKABLE DOUBLE GATE AND FENCING
- ⑰ 6FT WIDE EGRESS PATHWAY
- ⑱ FIRE ACCESS CONNECTION, TYP OF 2
- ⑲ VEGETATED MOUND WITH LOCATION FOR ART
- ⑳ REFUSE AND RECYCLE RECEPTACLES
- ㉑ SUNKEN ART ROOM WITH PERMANENT PROJECTION PANEL. PANEL CAN BE USED FOR MOUNTED ART WHEN NOT USED FOR PROJECTIONS. (16' X 16')
- ㉒ BOLLARD LIGHT, TYP
- ㉓ LOCATION FOR A-FRAME SIGN OR BANNER

ALL DOORS TO COMMUNITY CENTER WILL BE EQUIPPED WITH FOB/KEYLESS ENTRY

NOTE: LOCKED CONVENIENCE OUTLETS WILL BE PROVIDED THROUGHOUT THE ART PARK.



IMAGERY INTENDED TO CONVEY GENERAL LOOK AND FEEL, NOT EXACT DESIGNS

PRELIMINARY PLANT PALETTE

SYMBOL	BOTANICAL NAME	COMMON NAME	CONT SIZE	SPACING	WTR USE
STREET TREES					
	CERCIS CANADENSIS	EASTERN REDBUD	36" BOX	PER PLAN	M
SCREEN & SHADE TREES					
	ACER RUBRUM	RED MAPLE	36" BOX	PER PLAN	M
	ARBUTUS 'MARINA'	STRAWBERRY TREE	36" BOX	PER PLAN	L
	LAURUS NOBILIS	SWEET BAY	36" BOX	PER PLAN	L
	LOPHOSTEMON CONFERTUS	BRISBANE BOX	36" BOX	PER PLAN	M
	PODOCARPUS MACROPHYLLUS 'MAK'	SHRUBBY YEW PINE	36" BOX	PER PLAN	M
	QUERCUS AGRIFOLIA	LIVE OAK	36" BOX	PER PLAN	VL
SHRUBS, GRASSES & PERENNIALS					
	ACACIA COGNATA 'COUSIN ITT'	LITTLE RIVER WATTLE	5 GAL	4'-0" OC	L
	ACHILLEA 'MOONSHINE'	MOONSHINE YARROW	1 GAL	2'-0" OC	L
	AEONIUM D. 'SUNBURST'	AEONIUM D. 'SUNBURST'	1 GAL	1'-6" OC	L
	AGAVE ATTENUATA 'NOVA'	AGAVE ATTENUATA 'NOVA'	5 GAL	3'-0" OC	L
	ANIGOZANTHOS 'BUSH PEARL'	ANGAZANTHOS 'BUSH PEARL'	5 GAL	2'-0" OC	L
	ARCTOSTAPHYLOS X 'HOWARD MCMIN'	HOWARD MCMINN MANZANITA	5 GAL	5'-0" OC	L
	ASPIDISTRA ELATIOR	CAST IRON PLANT	1 GAL	2'-0" OC	L
	CALLISTEMON 'LITTLE JOHN'	DWARF CALLISTEMON	1 GAL	4'-0" OC	L
	CEANOTHUS 'SKYLARK'	WILD LILAC	1 GAL	5'-0" OC	L
	CORREA 'WINN'S WONDER'	AUSTRALIAN FUCHSIA	1 GAL	3'-0" OC	L
	DIETES BICOLOR	FORTNIGHT LILY	5 GAL	3'-0" OC	L
	DODONAEA V. 'PURPUREA'	HOP BUSH	5 GAL	6'-0" OC	L
	GREVILLEA X 'NOELLI'	GREVILLEA	5 GAL	4'-0" OC	L
	HESPERALOE PARVIFOLIA	RED YUCCA	5 GAL	4'-0" OC	L
	KNIPHOFIA UVARIA 'BLAZE'	RED HOT POKER	1 GAL	3'-0" OC	L
	LANTANA MONTEVIDENSIS	LANTANA	5 GAL	3'-0" OC	L
	LEUCOPHYLLUM FRUTESCENS 'COMPACTA'	TEXAS RANGER	5 GAL	5'-0" OC	L
	LEYMUS C. 'CANYON PRINCE'	CANYON PRINCE WILD RYE	1 GAL	2'-0" OC	L
	LIBERTIA PEREGRINANS	ORANGE LIBERTIA	1 GAL	2'-0" OC	L
	LOMANDRA L. 'BREEZE'	DWARF MAT RUSH	1 GAL	3'-0" OC	L
	LOROPETALUM CHINENSE 'SHANG-WHITE'	EMERALD SNOW FRINGE FLOWER	5 GAL	4'-0" OC	L
	MUHLENBERGIA DUBIA	PINE MUHLY	5 GAL	2'-6" OC	L
	PHORMIUM SPECIES	NEW ZEALAND FLAX	5 GAL	VARIES	L
	PITOSPORUM TENUIFOLIUM 'GOLF BALL'	GOLF BALL PITOSPORUM	5 GAL	4'-0" OC	L
	PITOSPORUM TOBIRA 'VARIEGATA'	VARIEGATED MOCK ORANGE	5 GAL	4'-0" OC	L
	ROSMARINUS 'TUSCAN BLUE'	ROSEMARY	5 GAL	4'-0" OC	L
	SALVIA LEUCANTHA 'SANTA BARBARA'	MEXICAN BUSH SAGE	5 GAL	4'-0" OC	L
	SANTOLINA CHAMAECYPARISSUS	GRAY LAVENDER COTTON	1 GAL	3'-0" OC	L
	SOLLYA HETEROPHYLLA	AUSTRALIAN BLUEBELL	5 GAL	3'-0" OC	L
GROUND COVER					
	CEANOTHUS 'YANKEE POINT'	CALIFORNIA LILAC	1 GAL	4'-0" OC	L
	CISTUS S. 'PROSTRATUS'	SAGELEAF ROCKROSE	1 GAL	4'-0" OC	L
	MYOPORUM PARVIFOLIA	MYOPORUM	1 GAL	4'-0" OC	L
	SEDUM PALMERI	STONECROP	1 GAL	1'-6" OC	L
	SENECIO SERPENS	BLUE CHALK STICK	1 GAL	2'-0" OC	L
	STACHYS BYZANTINA	LAMB'S EAR	1 GAL	1'-6" OC	L

PLANT IMAGERY



CERCIS CANADENSIS ACER RUBRUM ARBUTUS 'MARINA' LAURUS NOBILIS LOPHOSTEMON CONFERTUS QUERCUS AGRIFOLIA



ACACIA C. 'COUSIN ITT' ACHILLEA 'MOONSHINE' AEONIUM D. 'SUNBURST' AGAVE ATTENUATA 'NOVA' ANIGOZANTHOS 'BUSH PEARL' ASPIDISTRA ELATIOR



DIETES BICOLOR DODONAEA V. 'PURPUREA' HESPERALOE PARVIFOLIA LANTANA MONTEVIDENSIS LEYMUS C. 'CANYON PRINCE' LOMANDRA L. 'BREEZE'



LOROPETALUM 'SHANG-WHITE' PITOSPORUM 'GOLF BALL' SANTOLINA CHAMAECYPARISSUS SEDUM PALMERI SENECIO SERPENS STACHYS BYZANTINA

Next Steps

- Commission Comments/Questions
- Public Input Process
 - Public Comment
 - On-line Survey
 - Community Meeting
 - Parks & Recreation Commission Meeting
 - Other
- Preferred Schematic Design responsive to public input
- Recommendation to Council