

ABBREVIATIONS	
A. And	F.A. Fire Alarm
AD. Area Drain	F.B. Floor Drain
ADJ. Adjustable	F.D. Foundation
AGGR. Aggregate	F.E. Fire Extinguisher
AL. Aluminum	F.E.C. Fire Extinguisher Cab
APPROX. Approximate	F.H.C. Fire Hose Cabinet
ARCH. Architectural	F.H. Finish
ASB. Asbestos	FL. Floor
ASPH. Asphalt	FLASH. Flashing
BD. Board	FLOR. Floor
BDM. Blumhaus	FRAC. Frieze
BLOC. Building	F.O.C. Face of Concrete
B.L. Block	F.O.F. Face of Finish
B.L.V. Blocking	F.O.M. Face of Mullion
BL. Blum	F.O.S. Face of Sheathing
B.O.C. Bottom of Concrete	FR. Frieze
B.O.M. Bottom of Mullion	F.S. Full Size
B.O.P. Bottom of Panel	FT. Foot or Feet
B.O.R. Bottom of Recess	FUR. Furring
BOT. Bottom	FUT. Future
CAB. Cabinet	G. Gauge
C.B. Catch Basin	GALV. Galvanized
CEL. Cement	GR. Grab Bar
CER. Ceramic	GL. Glass
CI. Cast Iron	GRD. Ground
C.G. Corner Guard	GR. Grate
CLG. Ceiling	GYP. Gypsum
CLUG. Coaling	H.B. Hose Bib
CLD. Closet	H.C. Hollow Core
CLR. Clear	HW. Hardware
C.O. Closed Opening	HW. Hardware
COL. Column	H.M. Hollow Metal
C.O.M. Center of Mullion	HORZ. Horizontal
CONC. Concrete	HR. Hour
CONN. Connection	HGT. Height
CONSTR. Construction	I.D. Inside Diameter (Dim.)
CONT. Continuous	INSUL. Insulation
C.O.R. Center of Recess	INT. Interior
CORR. Corridor	J. Joint
CTS. Counter	J. Joint
CTR. Counter	J. Joint
DBL. Double	J. Joint
DEPT. Department	J. Joint
D.F. Drinking Fountain	J. Joint
DET. Detail	J. Joint
DIA. Diameter	J. Joint
DIM. Dimension	J. Joint
DISP. Dispenser	J. Joint
DN. Down	J. Joint
D.O. Door	J. Joint
D.O.R. Door	J. Joint
DWR. Drawer	J. Joint
DS. Downspout	J. Joint
D.S.P. Dry Standpipe	J. Joint
DWG. Drawing	J. Joint
E. East	J. Joint
E.A. Each	J. Joint
E.J. Expansion Joint	J. Joint
E.L. Elevation	J. Joint
ELEC. Electrical	J. Joint
ELEV. Elevator	J. Joint
EMER. Emergency	J. Joint
ENC. Enclosure	J. Joint
E.P. Electrical Panelboard	J. Joint
E.O. Eave	J. Joint
E.QPT. Equipment	J. Joint
E.W.C. Electric Water Cooler	J. Joint
EXT. Existing	J. Joint
EXPO. Exposed	J. Joint
EXP. Expansion	J. Joint
EXT. Exterior	J. Joint

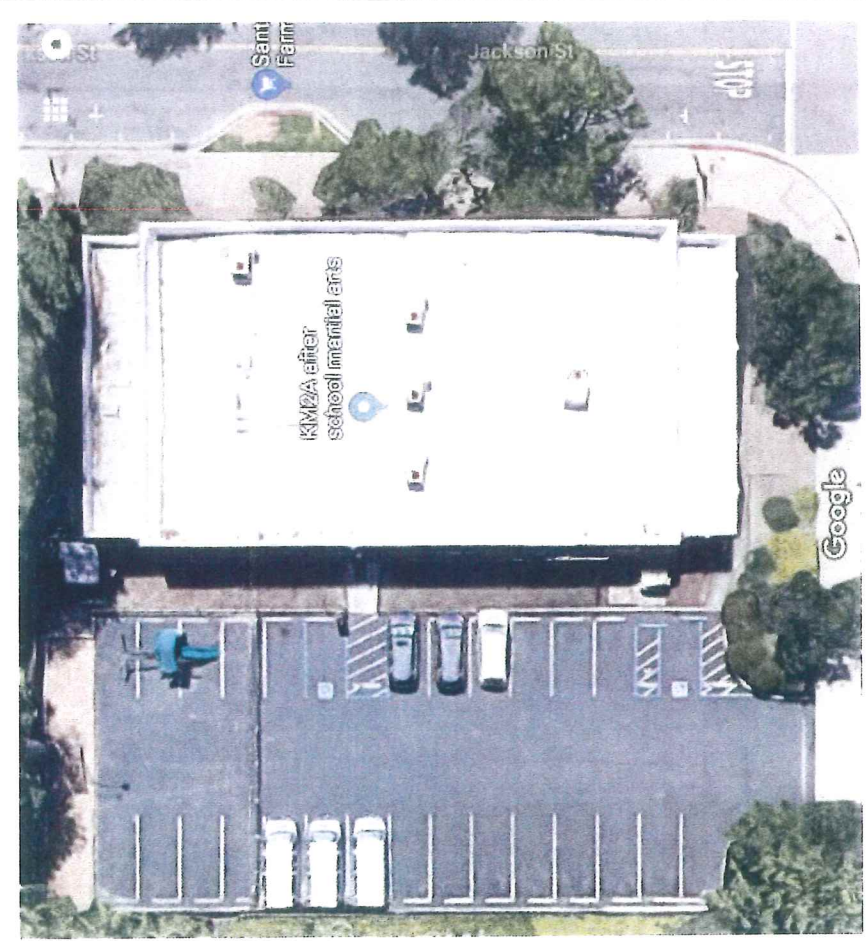
PROJECT DATA	
BUILDING DEPARTMENT:	CITY OF SANTA CLARA, CA
BUILDING CODES:	2018 CALIFORNIA BUILDING CODE 2018 CALIFORNIA ELECTRICAL CODE 2018 CALIFORNIA MECHANICAL CODE 2018 CALIFORNIA PLUMBING CODE 2018 CALIFORNIA FIRE CODE 2018 CALIFORNIA GREEN BUILDING STANDARDS CODE 2018 STATE OF CALIFORNIA TITLE 24 ACCESSIBILITY STANDARDS
OCCUPANCY CLASSIFICATION:	PER CBC CHAPTER 3 - E (DAYCARE)
OCCUPANCY SEPARATION:	PER CBC TABLE 508.4 - N/A
TYPE OF CONSTRUCTION:	PER CBC CHAPTER 6 (SECTION 602) - V-B
SPRINKLERED:	NO
NUMBER OF STORIES:	ONE
PROJECT SCOPE:	ADD A NEW OUTDOOR PLAY AREA AT AN EXISTING BUILDING AND SITE FOR A NEW DAYCARE
TENANT OCCUPANCY:	EDUCATION (DAYCARE) 8,435 S.F. TOTAL 8,435 S.F.

SHALOM CHRISTIAN ACADEMY LLC

1190 BENTON AVENUE SANTA CLARA, CA 95050

(For Planning Approval)

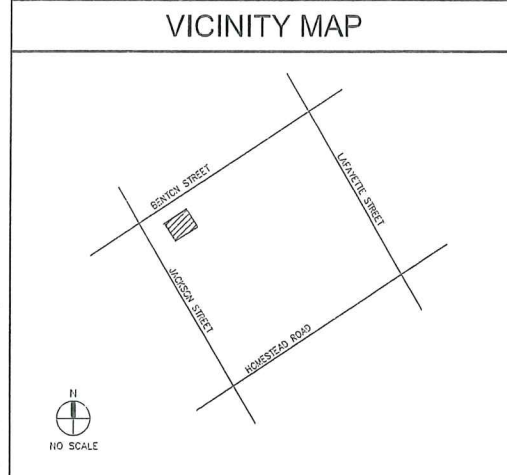
NEW SITE PLAN SPECIFIC NOTES	
1	NEW PADDED PLAY AREA BY GC
2	NEW PLAY AREA WITH BARR.
3	NEW PLAY EQUIPMENT TO BE INSTALLED AS NOTED.



RECEIVED
 AUG 03 2018
PLANNING DIVISION

SITE PLAN (for Reference Only)
SCALE: 1"=11'-0"

SYMBOLS	
OFFICE	ROOM NAME
ROOM NUMBER	ROOM NUMBER
DOOR NUMBER	DOOR NUMBER
EXISTING DOOR	EXISTING DOOR
DETAIL REFERENCE	DETAIL REFERENCE
DETAIL SECTION REFERENCE	DETAIL SECTION REFERENCE
DETAIL SECTION REFERENCE	DETAIL SECTION REFERENCE
EXTERIOR ELEVATION REFERENCE	EXTERIOR ELEVATION REFERENCE
INTERIOR ELEVATION VIEW	INTERIOR ELEVATION VIEW
INTERIOR ELEVATION REFERENCE	INTERIOR ELEVATION REFERENCE
WALL MATERIAL TYPE	WALL MATERIAL TYPE
FLOOR MATERIAL TYPE	FLOOR MATERIAL TYPE
MISC MATERIAL TYPE	MISC MATERIAL TYPE
KEYNOTE INDICATOR	KEYNOTE INDICATOR
FINISH INDICATOR	FINISH INDICATOR
REVISION	REVISION
FIRE EXTINGUISHER CABINET	FIRE EXTINGUISHER CABINET
WALL-MOUNTED FIRE EXTINGUISHER	WALL-MOUNTED FIRE EXTINGUISHER



OWNER / DEVELOPER
JPT CONSTRUCTION & DEVELOPMENT SERVICES 4575 STEVENS CREEK BLVD, SUITE 241/B SANTA CLARA, CA 95051 PAUL TERSHI PR: (408) 281-0303 FAX: (408) 281-0303
TENANT
SHALOM CHRISTIAN ACADEMY DONG CHH (408) 655-1773

PROJECT NOTES	
DAYCARE STAFF 13 TEACHERS 75 STUDENTS 15 STUDENTS PER SESSION OUTDOORS	PARKING DATA PROPOSED 21 SPACES TOTAL 2 ADA 19 STANDARD

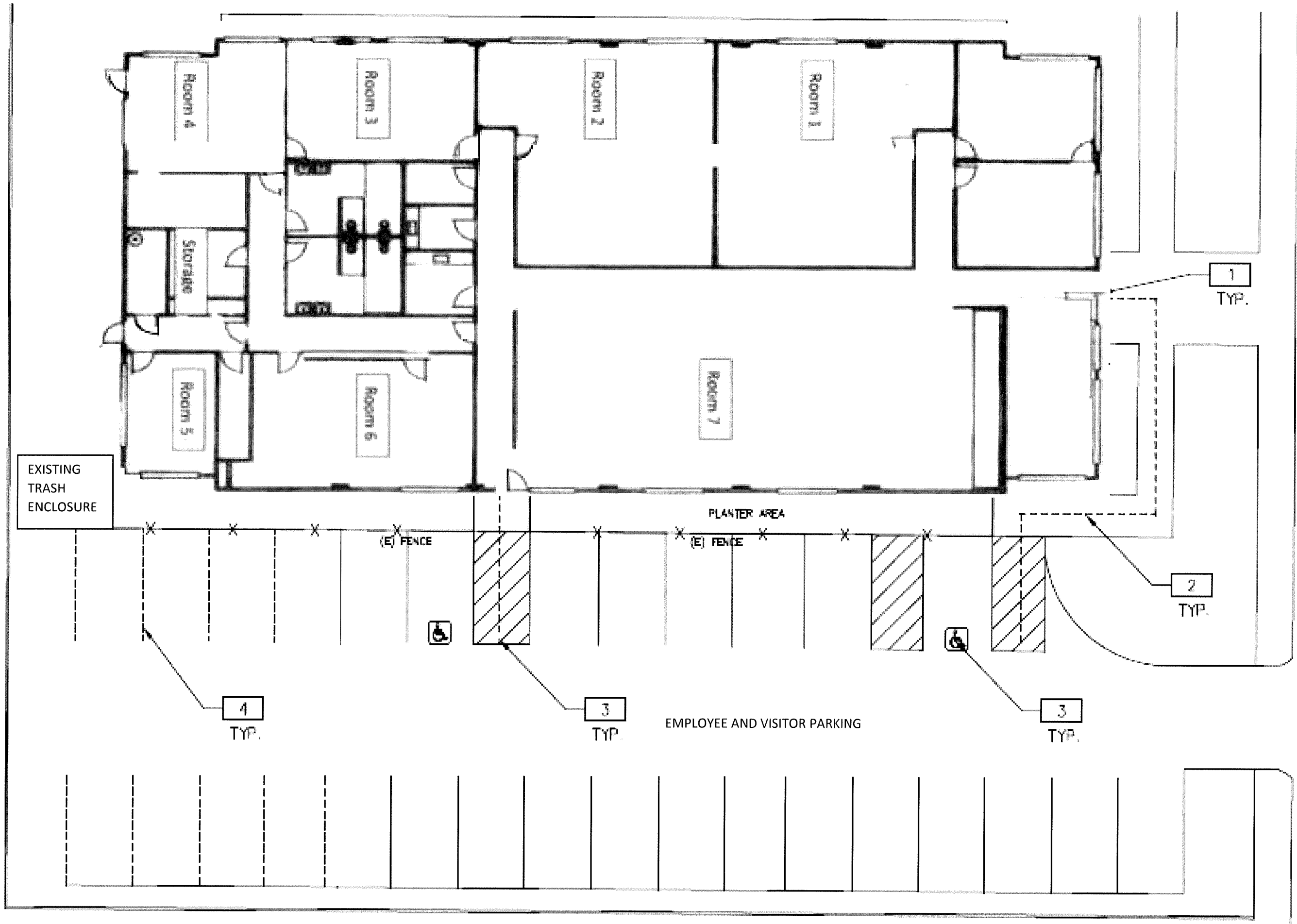
SHEET INDEX	
ARCHITECTURAL	(6 of 6)
A0.1	TITLE SHEET/ SITE PLAN

SHALOM CHRISTIAN ACADEMY LLC
 1190 BENTON AVENUE
 SANTA CLARA, CA 95050

DATE	REVISIONS
08/27/2018	PLANNING SUBMITTAL

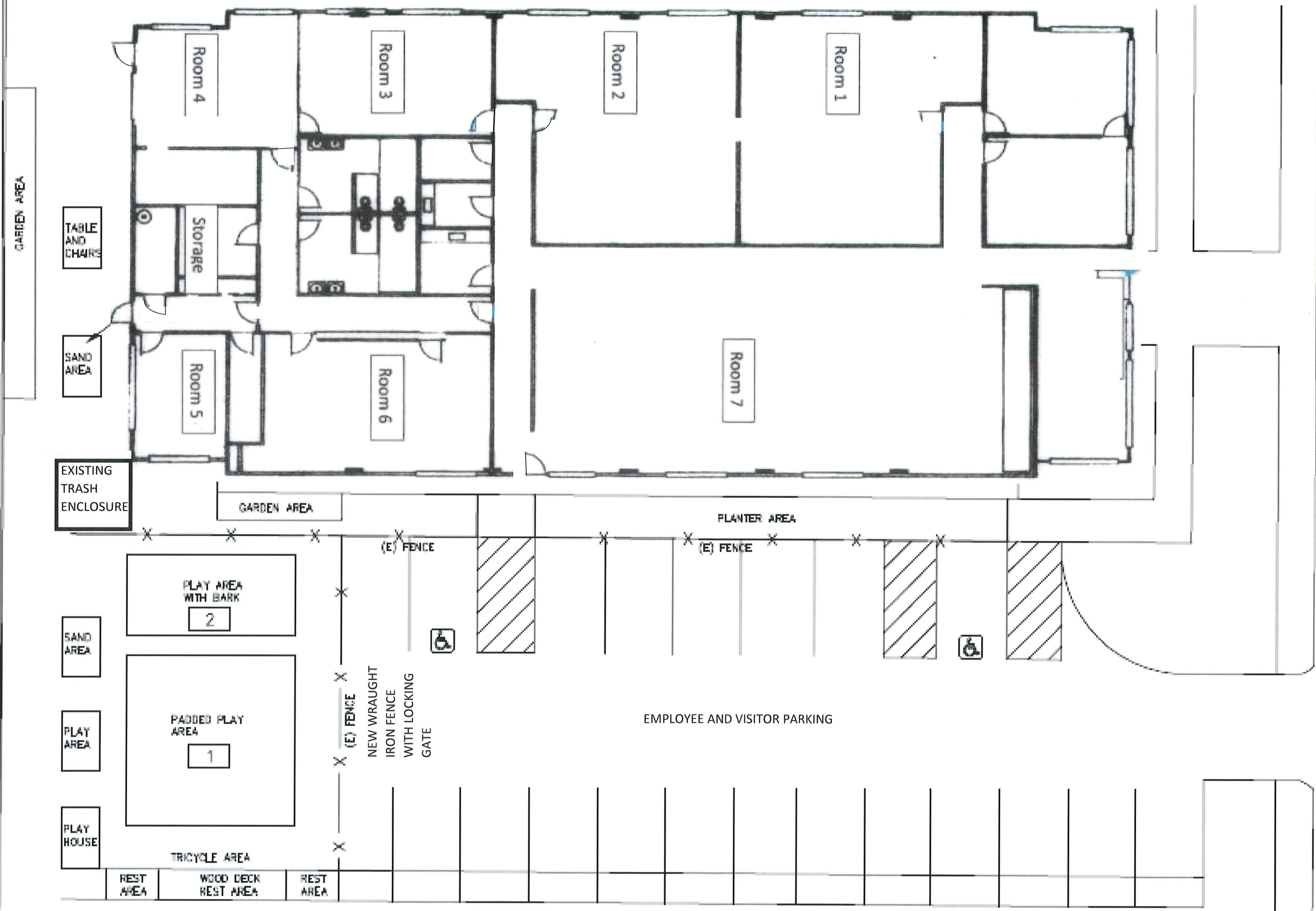
PA / FR:	K. UEN
DRAWN BY:	000
JOB NO.:	

SHEET
A0.1



1190 Benton St.

EXISTING SITE PLAN



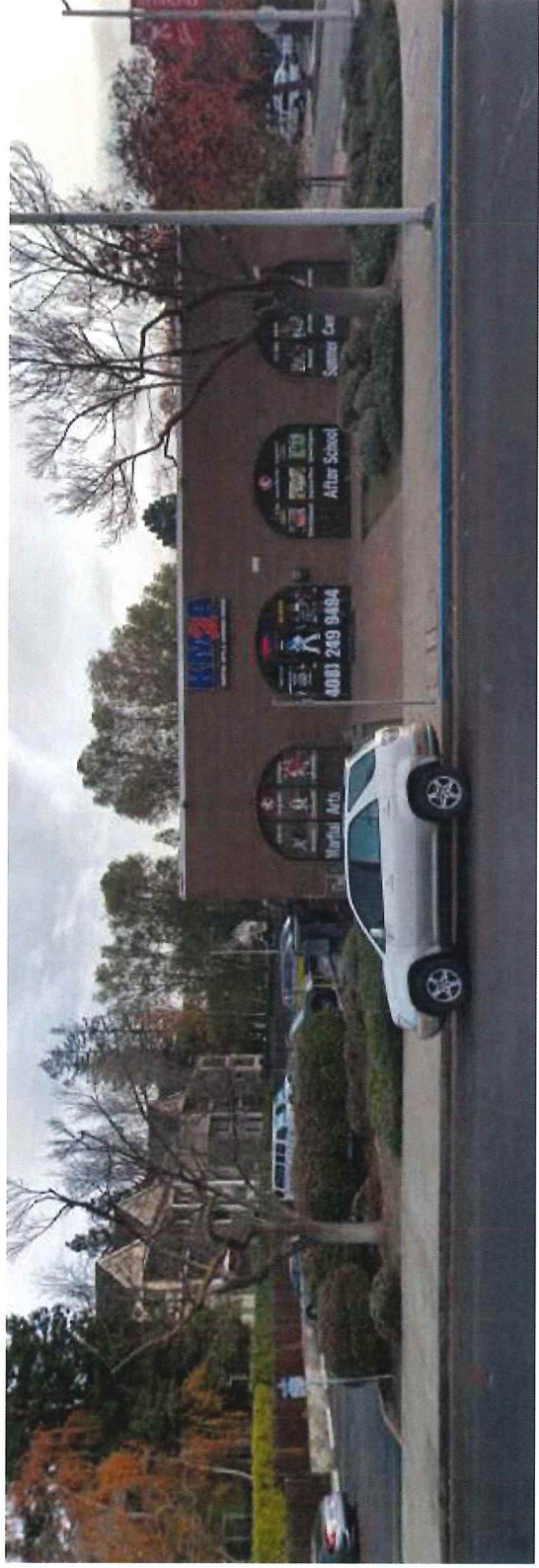
DEMO SITE PLAN SPECIFIC NOTES

- 1. EXISTING FULLY ACCESSIBLE PRIMARY ENTRANCE TO REMAIN. GC TO VERIFY THAT LANDING AT DOOR DOES NOT EXCEED 2% SLOPE IN ANY DIRECTION.
- 2. HEAVY DASHED LINE INDICATES EXISTING FULLY ACCESSIBLE PATH OF TRAVEL TO REMAIN. GC TO VERIFY SLOPE DOES NOT EXCEED 5% IN DIRECTION OF TRAVEL OR A 2% CROSS-SLOPE.
- 3. EXISTING FULLY ACCESSIBLE HANDICAPPED PARKING TO REMAIN. GC TO VERIFY THAT SLOPE DOES NOT EXCEED 2% IN ANY DIRECTION.
- 4. DEMO EXISTING PARKING STALLS FOR NEW PLAY AREA.

BENTON STREET

1190 Benton St.

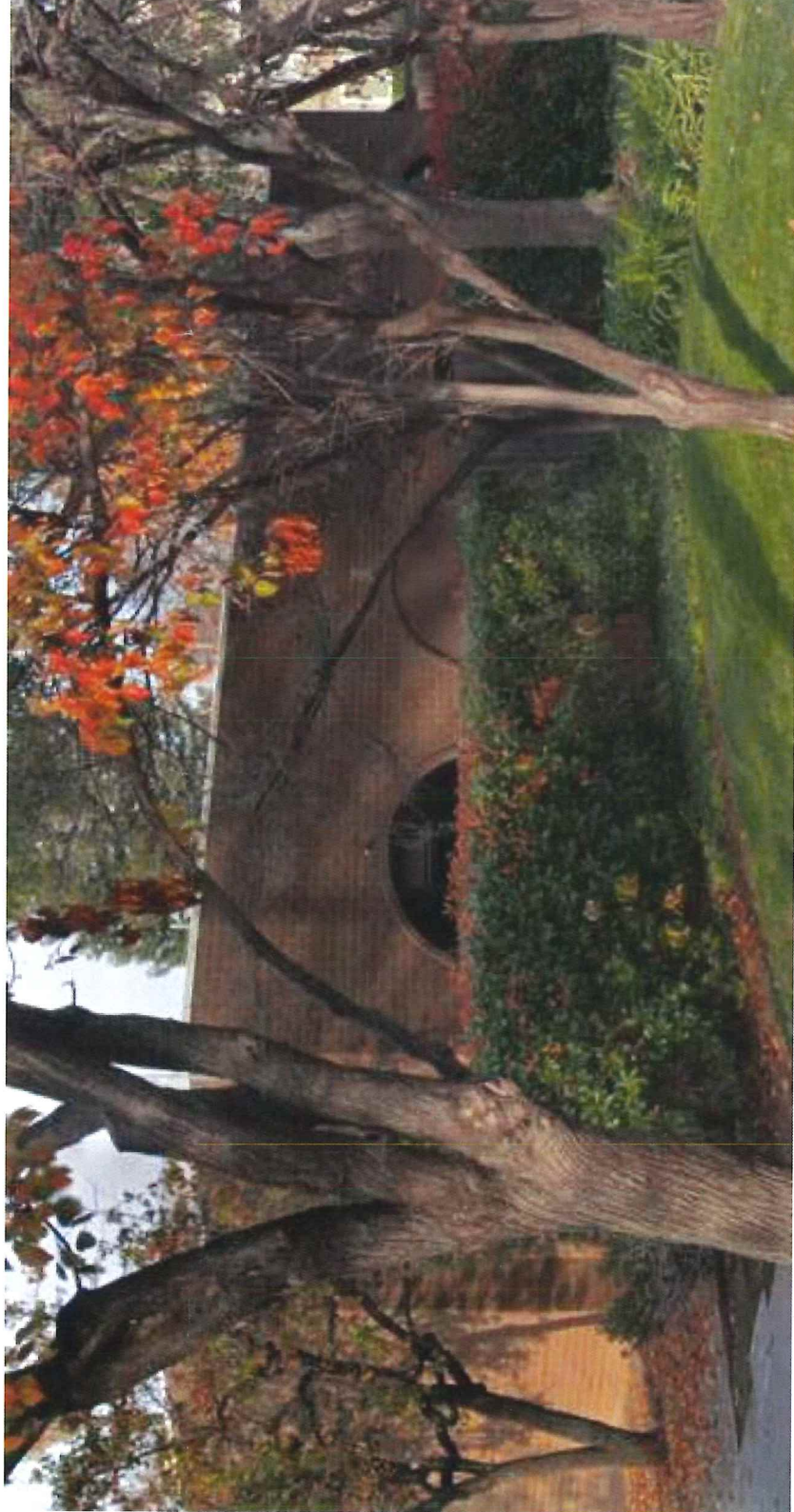
PROPOSED SITE PLAN



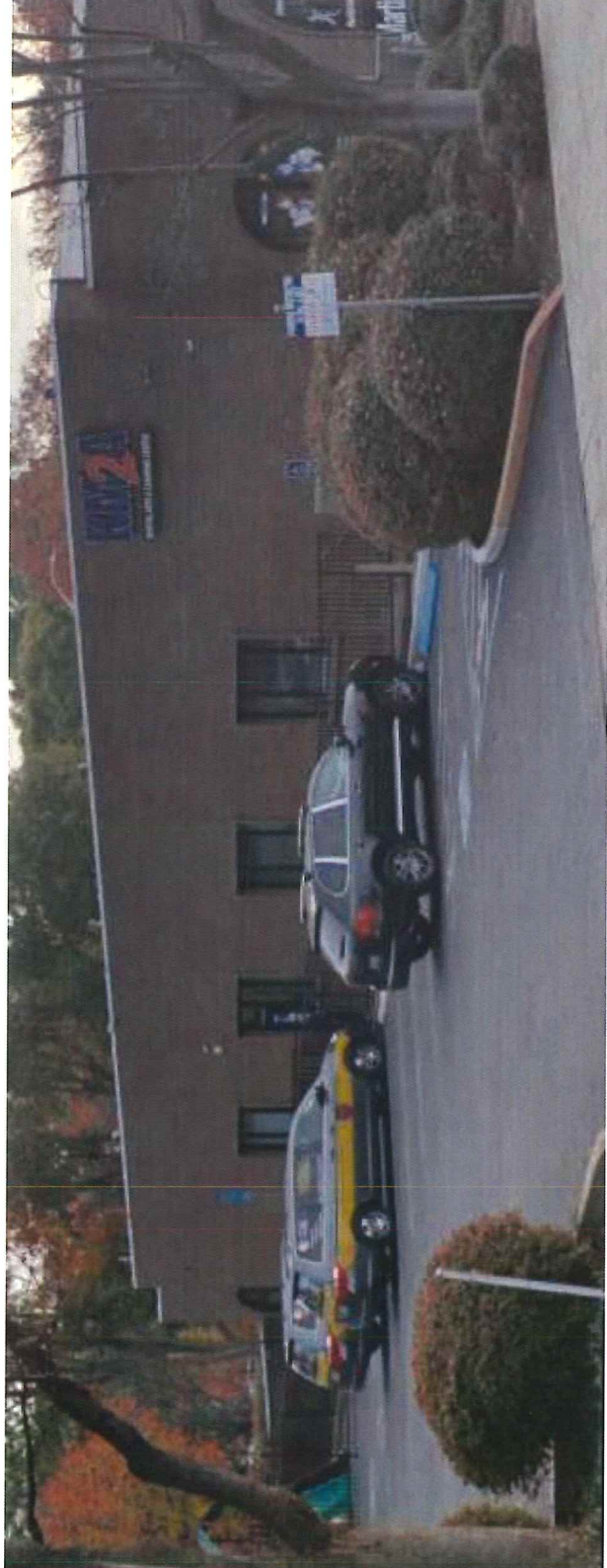
North facing



West facing



South Facing



West Facing

PREVIOUS AND EXISTING