

LEGEND	
PROPERTY LINE	---
ROADWAY CENTERLINE	---
EASEMENT LINE	---
EXISTING STORM DRAIN	---
EXISTING SANITARY SEWER	---
EXISTING DOMESTIC WATER	---
EXISTING NATURAL GAS	---
EXISTING OVER HEAD LINE	---
EXISTING FENCE	---
REMOVE EX. UTILITY LINE	---
ABANDON EX. UTILITY LINE	---
CUT & CAP EX. UTILITY LINE	---
STORM DRAIN MANHOLE	⊙
SANITARY SEWER MANHOLE	⊙
CATCH BASIN/DRAIN INLET	⊙
WATER METER/VALVE	⊙
FIRE HYDRANT	⊙
JOINT UTILITY POLE	⊙
STREET SIGN SIGN	⊙
STREETLIGHT	⊙
SPOT ELEVATION	x 46.21



MAINLINE NORTH
 2310 CALLE DEL MUNDO,
 SANTA CLARA, CA 95054

EXISTING CONDITIONS

TENTATIVE MAP SUBMITTAL

Project Number:	2019 0114
Plan Check Number:	201

SHEET

GRAPHIC SCALE
 (1" = 10')
 1 Inch = 10 ft.

TM2.0

APN: 097-46-061
2281 CALLE DE LUNA

CALLE DEL MUNDO
(60' PUBLIC R/W)

LOT 24
FOR FUTURE
CONDOMINIUM PURPOSES

APN: 097-46-024
2310 CALLE DEL MUNDO
0.99 AC
UP TO 3 COMMERCIAL UNITS
1 RESIDENTIAL UNIT

APN: 097-46-025
2272 CALLE DEL MUNDO

LEGEND	
PROPERTY LINE	---
EASEMENT LINE	- - - - -
REDWOOD HEADER/VERTICAL CURB	=====
VERTICAL CURB & GUTTER	=====
FLOW THROUGH PLANTER	-----
CONCRETE PAVING	=====
PAVERS (SEE LANDSCAPE PLANS)	=====
NEW FENCE	-----
EMVE	EMERGENCY VEHICLE ACCESS EASEMENT
PAE	PUBLIC ACCESS EASEMENT
SME	SIDEWALK EASEMENT
UGEZ	UNDERGROUND ELECTRIC EASEMENT
IEE	INGRESS/EGRESS EASEMENT
PUE	PUBLIC UTILITY EASEMENT



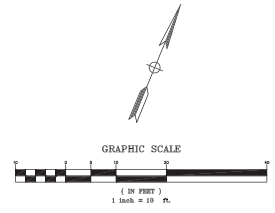
MAINLINE NORTH
2310 CALLE DEL MUNDO,
SANTA CLARA, CA 95054

VESTING TENTATIVE PARCEL MAP

TENTATIVE MAP SUBMITTAL

Project Number:	2019 0114
Plan Sheet Number:	001

SHEET



TM4.0

DATE: 11/21/19 11:14 AM
PROJECT: 2310 CALLE DEL MUNDO
DRAWN BY: J. S. JONES
CHECKED BY: J. S. JONES
DATE: 11/21/19 11:14 AM
PROJECT: 2310 CALLE DEL MUNDO
DRAWN BY: J. S. JONES
CHECKED BY: J. S. JONES

PARCEL EIGHT (80' x 110') IS A 1/2 A.C. U.S. APPLICANT TO APN 097-46-023 PER P.T.R. FOR THAT PARTED PARCEL (NOT SHOWN IN P.T.R. FOR -24) TO BE VACATED.

EXISTING 5' WCE FOR C226 018 401

EXISTING 10' E.E. PER C226 018 401

10.00' WCEZ

110' TYP. DRIVE

40' PAV.

0.0' SME

70' UGEZ

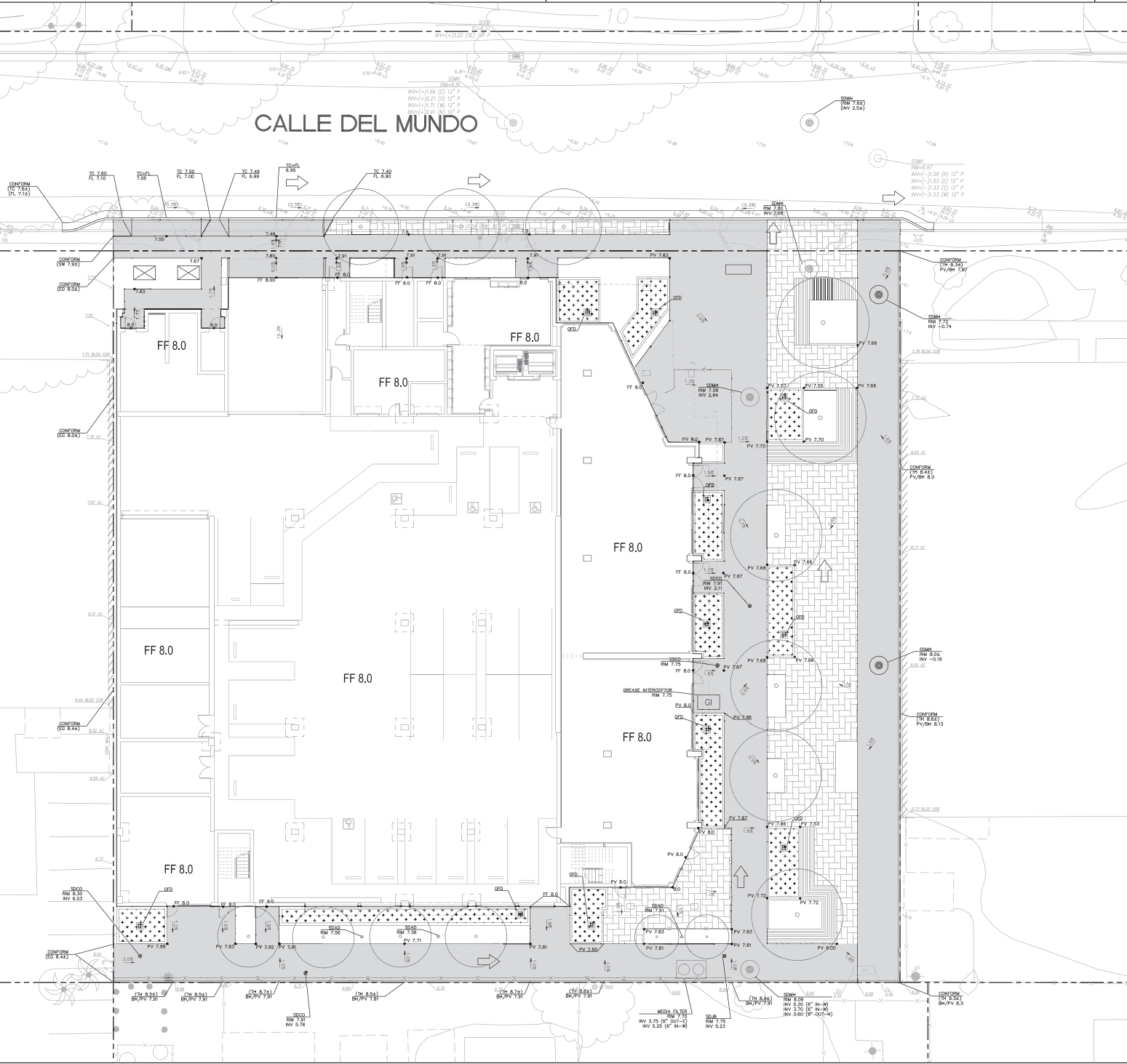
UGEZ

EXISTING 5' WCE FOR C226 018 401

APN: 097-46-006
2322 CALLE DEL MUNDO

APN: 097-46-023
2281 CALLE DE LUNA

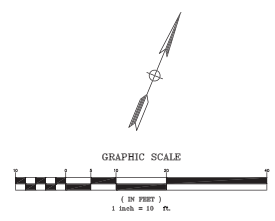
2024 Mainline North, LLC (d/b/a) - The owner accepts partial liability for any errors or omissions on this project. The designer warrants that the information provided is based on a review of the information provided to the designer and is not a guarantee of the accuracy of the information provided.



LEGEND

PROPERTY LINE
 ROADWAY CENTER LINE
 VERTICAL CURB/REDWOOD HEADER
 FINISH FLOOR ELEVATION
 GARAGE SLAB FLOOR ELEVATION
 TOP OF STEP ELEVATION
 BOTTOM OF STEP ELEVATION
 TOP OF CURB ELEVATION
 TOP OF ROLLED CURB ELEVATION
 FLOW LINE ELEVATION ELEVATION
 FINISH GRADE/SPOT ELEVATION
 HIGH POINT
 LOW POINT
 PAVEMENT ELEVATION
 TOP OF HEADER ELEVATION
 BOTTOM OF HEADER ELEVATION
 SLOPE/DIRECTION OF FLOW
 OVERLAND RELEASE
 SANITARY SEWER/STORM DRAIN MANHOLE
 STORM DRAIN CATCH BASIN/OVERFLOW DRAIN
 AREA DRAIN
 SANITARY SEWER/STORM DRAIN CLEANOUT
 NEW FENCE
 FLOW THROUGH PLANTER
 CONCRETE PAVING
 PAVERS (SEE LANDSCAPE PLANS)

FF 36.05
 OS 36.05
 TS 36.05
 BS 36.05
 TC 36.05
 TRC 36.05
 FL 36.05
 36.05
 HP 36.05
 LP 36.05
 PV 36.05
 TH 36.05
 BH 36.05
 5:00/5:00
 5500/5500
 1" = 10'



AO
 Architecture.
 Design.
 Relationships.

BKF
 BKF ENGINEERS
 1730 N. FIRST STREET
 SUITE 500
 SAN JOSE, CA 95112
 (408) 467-9100
 www.bkf.com

USA
USA
 PROPERTIES
 FUND
 3200 DOUGLAS BLVD., STE. 200,
 ROSEVILLE, CA 95661

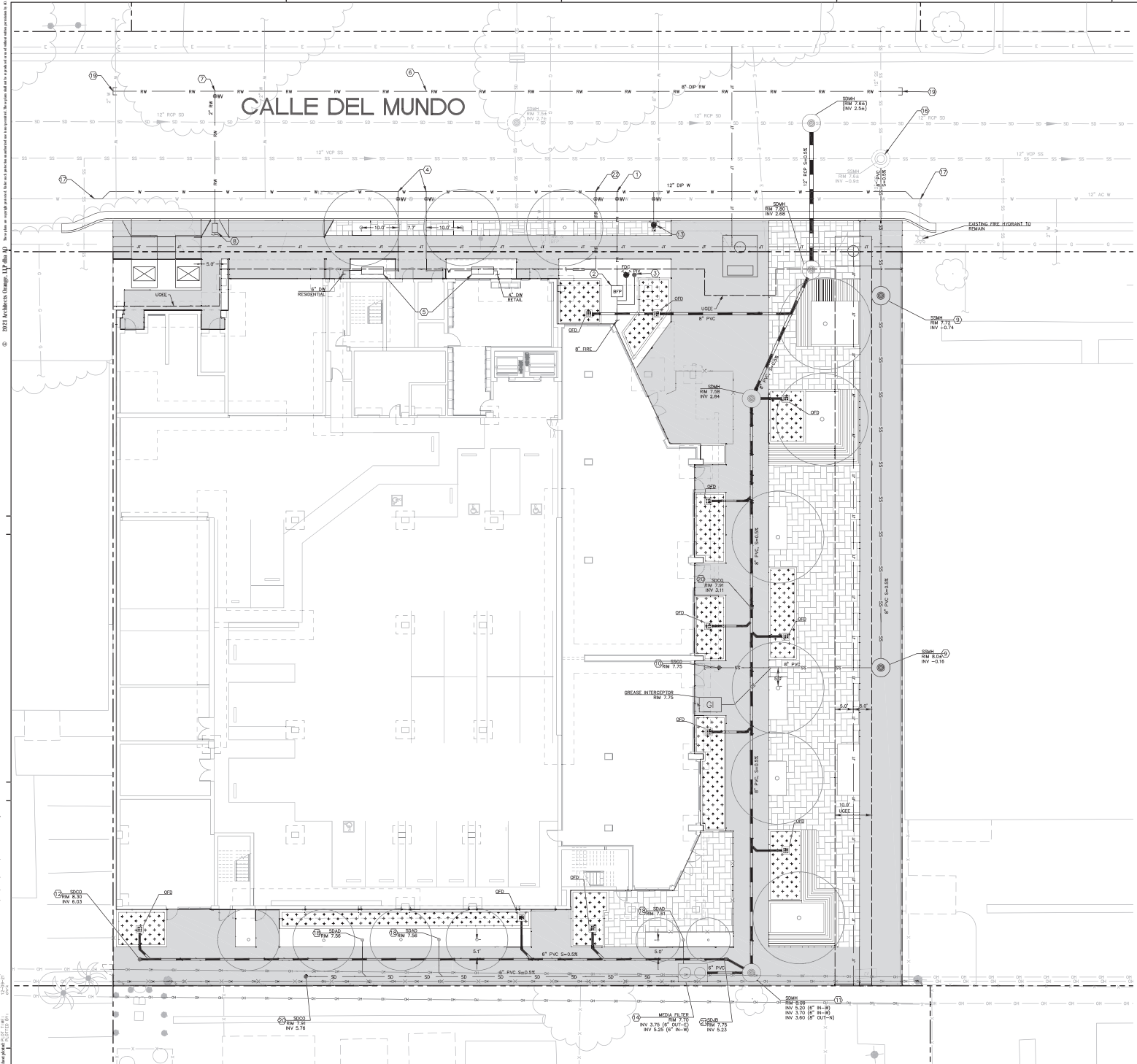
MAINLINE NORTH
 2310 CALLE DEL MUNDO,
 SANTA CLARA, CA 95054

GRADING PLAN

TENTATIVE MAP SUBMITTAL
 Project Number: 2019 0104
 Plan Sheet Number: 001

SHEET

TM5.0

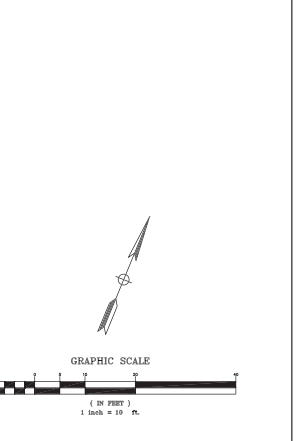


LEGEND

- PROPERTY LINE
 - STREET CENTER LINE
 - TREATED STORM DRAIN LINE
 - UNTREATED STORM DRAIN LINE
 - SANITARY SEWER LINE
 - DOMESTIC WATER LINE
 - IRRIGATION WATER LINE
 - GAS LINE
 - JOINT TRENCH (PER JOINT TRENCH INTENT PLANS)
 - RECYCLED WATER LINE
 - GAS LINE
 - FIRE WATER LINE
 - PERFORATED PIPE
- | | | | | |
|---------|----------|----------|----------|----------|
| 8" DP W | 12" DP W | 12" DP W | 12" DP W | 12" DP W |
| 8" DP W | 8" DP W | 8" DP W | 8" DP W | 8" DP W |
| 8" DP W | 8" DP W | 8" DP W | 8" DP W | 8" DP W |
| 8" DP W | 8" DP W | 8" DP W | 8" DP W | 8" DP W |
- SANITARY SEWER/STORM DRAIN MANHOLE
 - SANITARY SEWER/STORM DRAIN CLEANOUT
 - WATER VALVE & WATER METER
 - FIRE HYDRANT/FDC/POST INDICATOR VALVE
 - FLOW-THROUGH PLANTER
 - CONCRETE PAVING
 - PAVERS (SEE LANDSCAPE PLANS)
 - REDUCED PRESSURE DETECTOR ASSEMBLY
 - STORM DRAIN CATCH BASIN/OVERFLOW DRAIN
 - AREA DRAIN
 - BUBBLER BOX
 - STORM DRAIN JUNCTION BOX
 - SWITCH GEAR
 - TRANSFORMER

CONSTRUCTION KEY NOTES

1. INSTALL FIRE SERVICE PER CITY OF SANTA CLARA WATER DEPARTMENT STANDARD DETAIL NO. 17, PER BY CITY OF SANTA CLARA.
2. INSTALL DETAIL NO. 17, BACK FLOW PREVENTER TO BE WILSON 475DA MODEL.
3. INSTALL PIV AND FDC.
4. INSTALL DOMESTIC WATER SERVICE PER CITY OF SANTA CLARA WATER STANDARD DETAIL NO. 11, PER BY CITY OF SANTA CLARA.
5. INSTALL WATER METER AND REDUCED PRESSURE BACKFLOW PREVENTION DEVICE PER CITY OF SANTA CLARA WATER STANDARD DETAIL NO. 11, RPPA TO BE WATTS LF90P MODEL.
6. INSTALL 8" DP RECYCLED WATER MAIN.
7. INSTALL 8" RECYCLED WATER SERVICE PER CITY OF SANTA CLARA WATER STANDARD DETAIL NO. 5.
8. INSTALL 8" RECYCLED WATER METER PER CITY OF SANTA CLARA WATER STANDARD DETAIL NO. 5.
9. INSTALL SANITARY SEWER CLEANOUT PER CITY OF SANTA CLARA STANDARD DETAIL NO. 35-1.
10. INSTALL STORM DRAIN MANHOLE PER CITY OF SANTA CLARA STANDARD DETAIL NO. 35-1.
11. INSTALL STORM DRAIN CLEAN OUT PER CITY OF SANTA CLARA STANDARD DETAIL NO. 35-1.
12. INSTALL FIRE HYDRANT PER CITY OF SANTA CLARA STANDARD DETAIL NO. 18.
13. INSTALL 10" MEDIA FILTER (0.075 MEDIA FILTER) PER MEDIA FILTER DETAIL ON SHEET 02.0.
14. INSTALL STORM DRAIN CATCH BASIN.
15. CONNECT TO EXISTING MANHOLE.
16. REPLACE EXISTING 12" WATER MAIN WITH NEW 12" DP WATER MAIN.
17. INSTALL STORM DRAIN AREA DRAIN.
18. PROVIDE STUB FOR FUTURE EXTENSION.
19. INSTALL STORM DRAIN MANHOLE WITH PUMP AND BACK FLOW CHECK VALVE.
20. INSTALL NEW STORM DRAIN JUNCTION BOX.
21. INSTALL 2" DOMESTIC WATER IRRIGATION SERVICE PER CITY OF SANTA CLARA WATER STANDARD DETAIL NO. 8.



AO
Architecture,
Design,
Relationships.

BKF
ENGINEERS
1730 N. FIRST STREET
SUITE 300
SAN JOSE, CA 95112
(408) 487-8100
www.bkf.com

USA
PROPERTIES
FUND
3200 DOWGLAS BLVD. STE. 200
ROSEVILLE, CA 95661

MAINLINE NORTH
2310 CALLE DEL MUNDO,
SANTA CLARA, CA 95054

UTILITY PLAN

TENTATIVE MAP SUBMITTAL
Project Number: 2019-0114
Plan Sheet Number: 020

SHEET

TM6.0

© 2019 BKF Engineers, All Rights Reserved. This drawing is the property of BKF Engineers and is not to be reproduced, stored in a retrieval system, or transmitted in any form or by any means, electronic, mechanical, photocopying, recording, or by any information storage and retrieval system, without the prior written permission of BKF Engineers.