



# 4590 Patrick Henry Apartments Santa Clara, CA

Development Review Hearing October 16, 2024

---



Tasman Drive



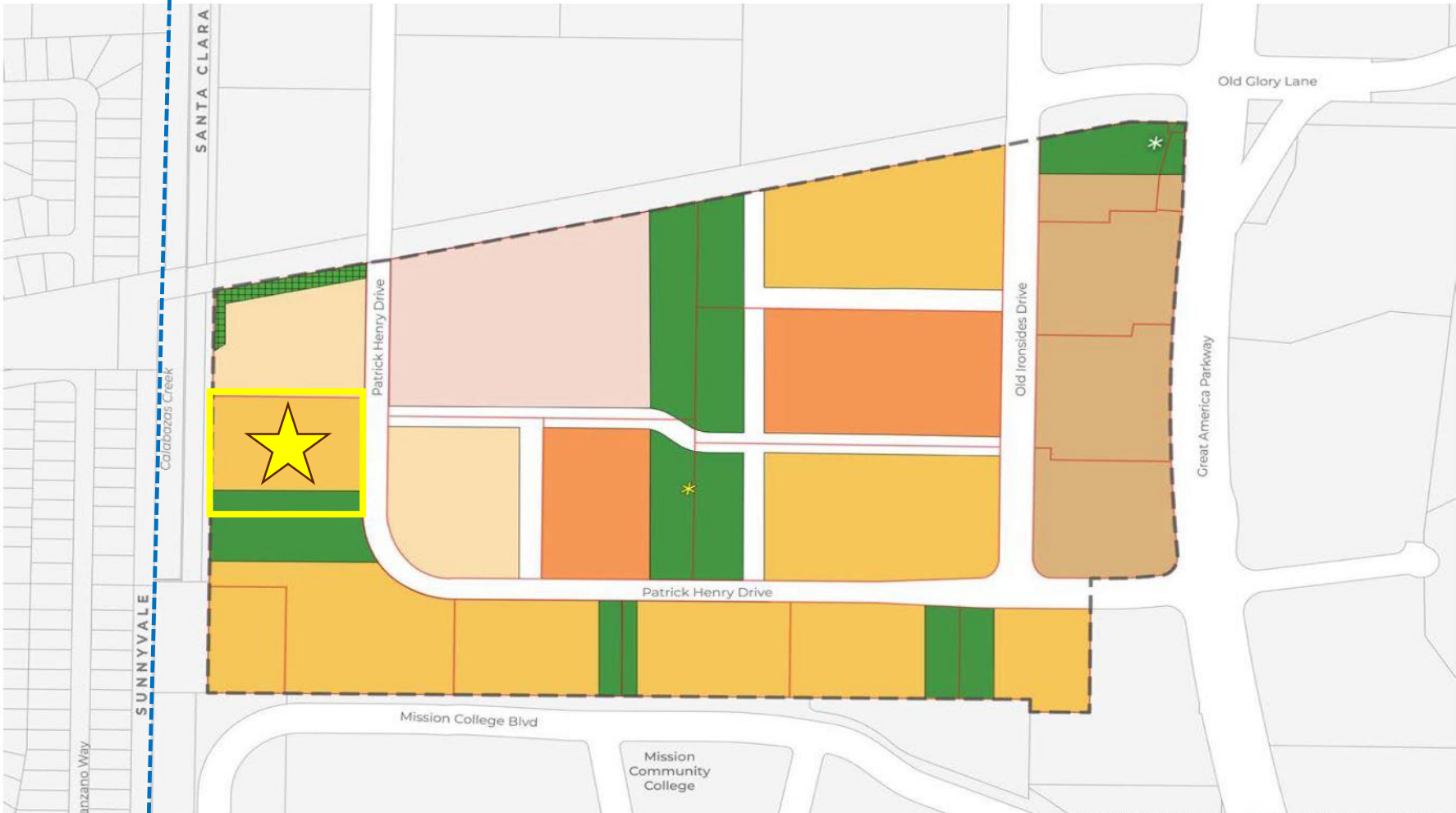
Great America Parkway

Patrick Henry Drive





Patrick Henry Drive



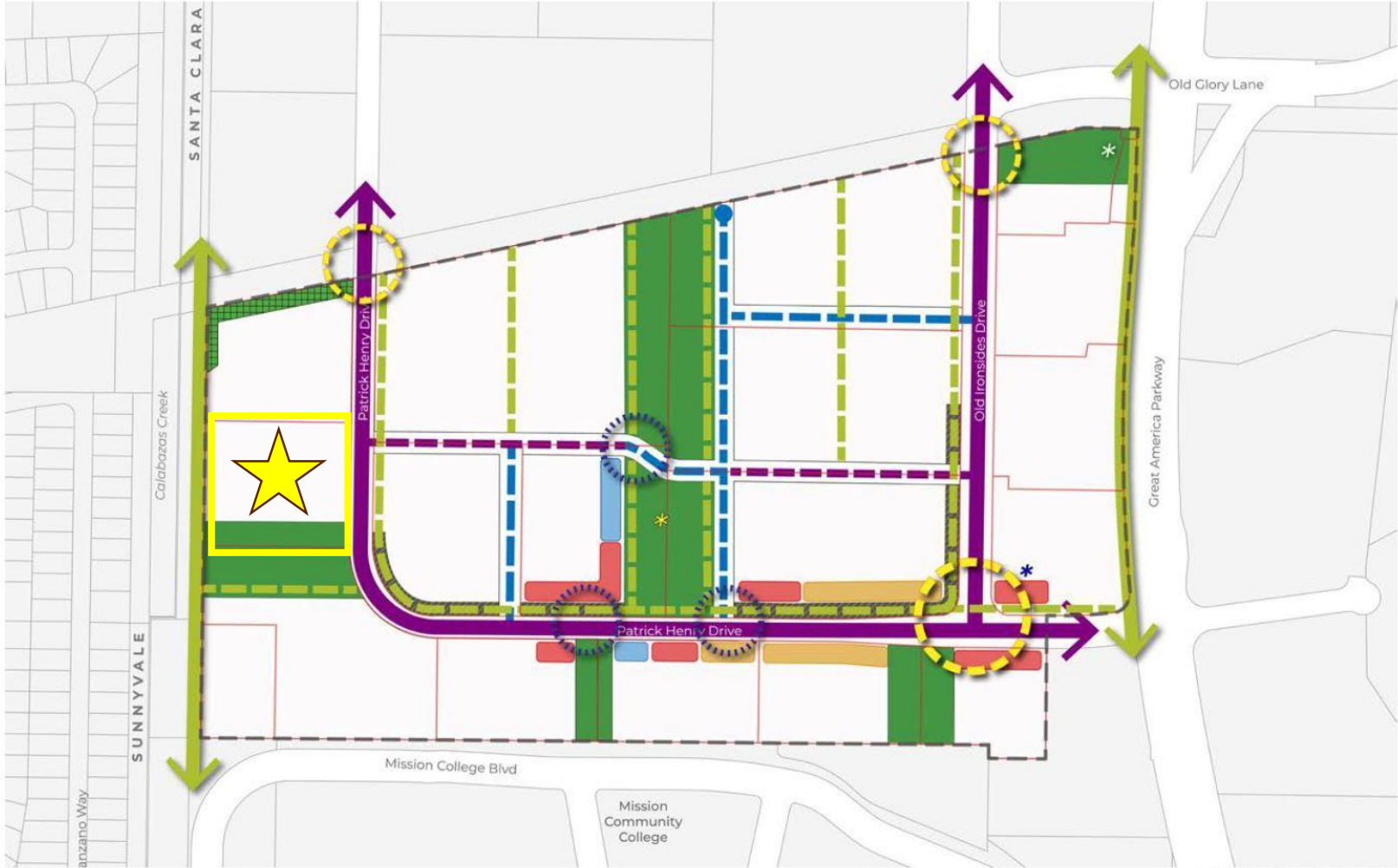
**FIGURE 4.3A: LAND USE PLAN**

- Study Area
- Existing Parcel (City of Santa Clara)
- Existing Parcel (Study Area)
- Open Space
- Very High Density Residential (51-99 du/ac)
- Urban Village (100-149 du/ac)
- Urban Center (120-250 du/ac)
- High Density Flex (60-149 du/ac ; 2.0 FAR)
- Village Residential (60-149 du/ac)
- Potential Trail and Landscape Dedication

\* Conceptual location of a future Library/Community Center \* Public parkland only required with residential development



# Part of Patrick Henry Specific Plan Area



**FIGURE 4.2: URBAN DESIGN FRAMEWORK**

Study Area	Plaza	Potential Trail and Landscape Dedication	Existing Roadway	Activity Nodes
Existing Parcel (City of Santa Clara)	Retail	Existing Greenway	Proposed Roadway	Gateways
Existing Parcel (Study Area)	Community / Civic	Proposed Greenway		
Open Space	Flex (Office, Retail)	Slow Street		

Public parkland only required with residential development  
 Conceptual location of a future Library/Community Center  
 No retail required if office is developed

0 250 500 Feet

CALABAZAS CREEK TRAIL

**284 new residences**  
**127 DUA**  
**1.14 parking ratio**

PATRICK HENRY DRIVE



New Public Park

CALABAZAS CREEK TRAIL

Secure  
Bike  
Parking

# Residential Building Ground Floor

Waste Electrical

Parking

Round  
About

Fitness

Leasing

Lobby

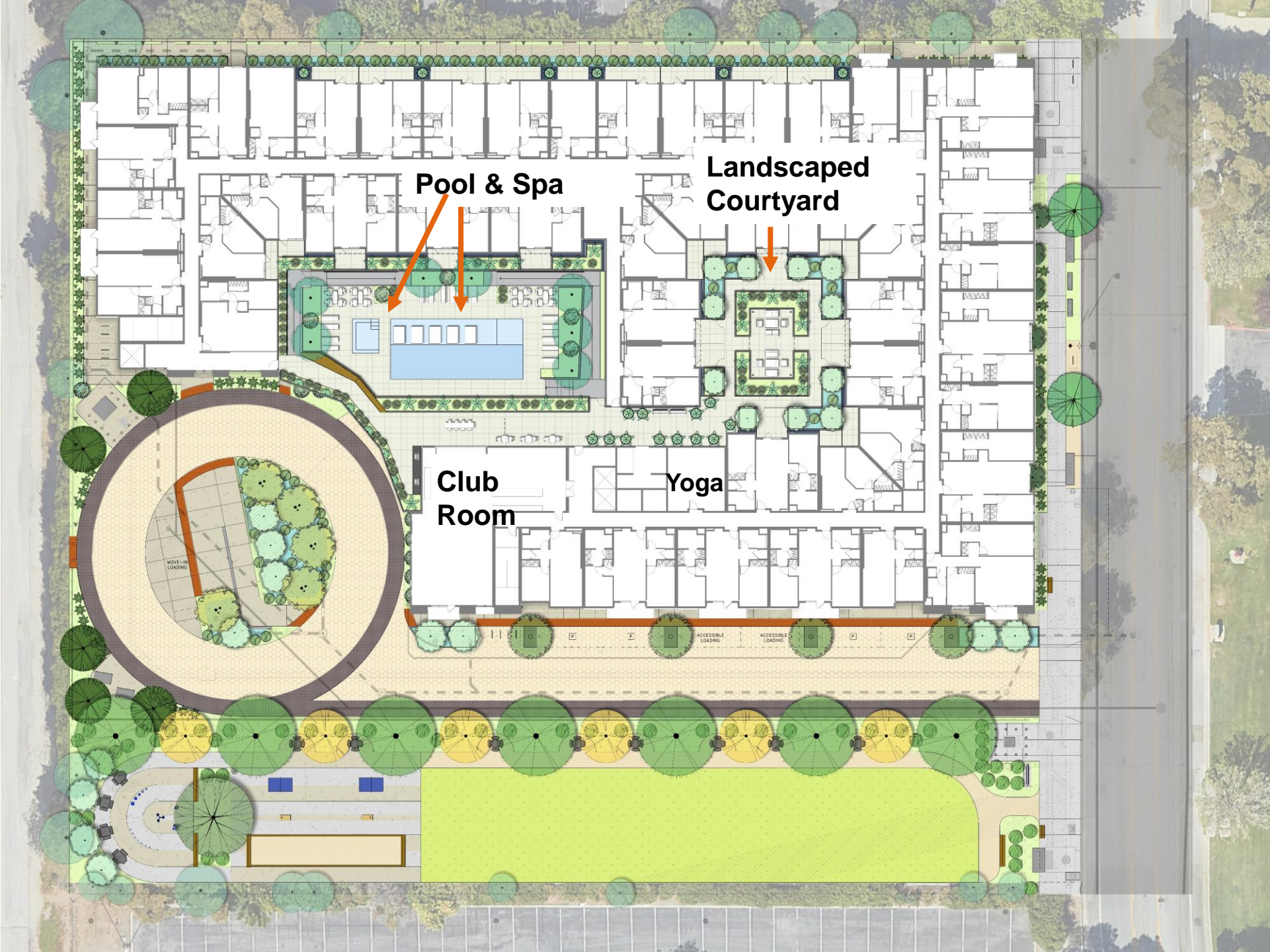
Social  
Lounge

PATRICK HENRY DRIVE

Entry Drive

New Public Park





**Pool & Spa**

**Landscaped  
Courtyard**

**Club  
Room**

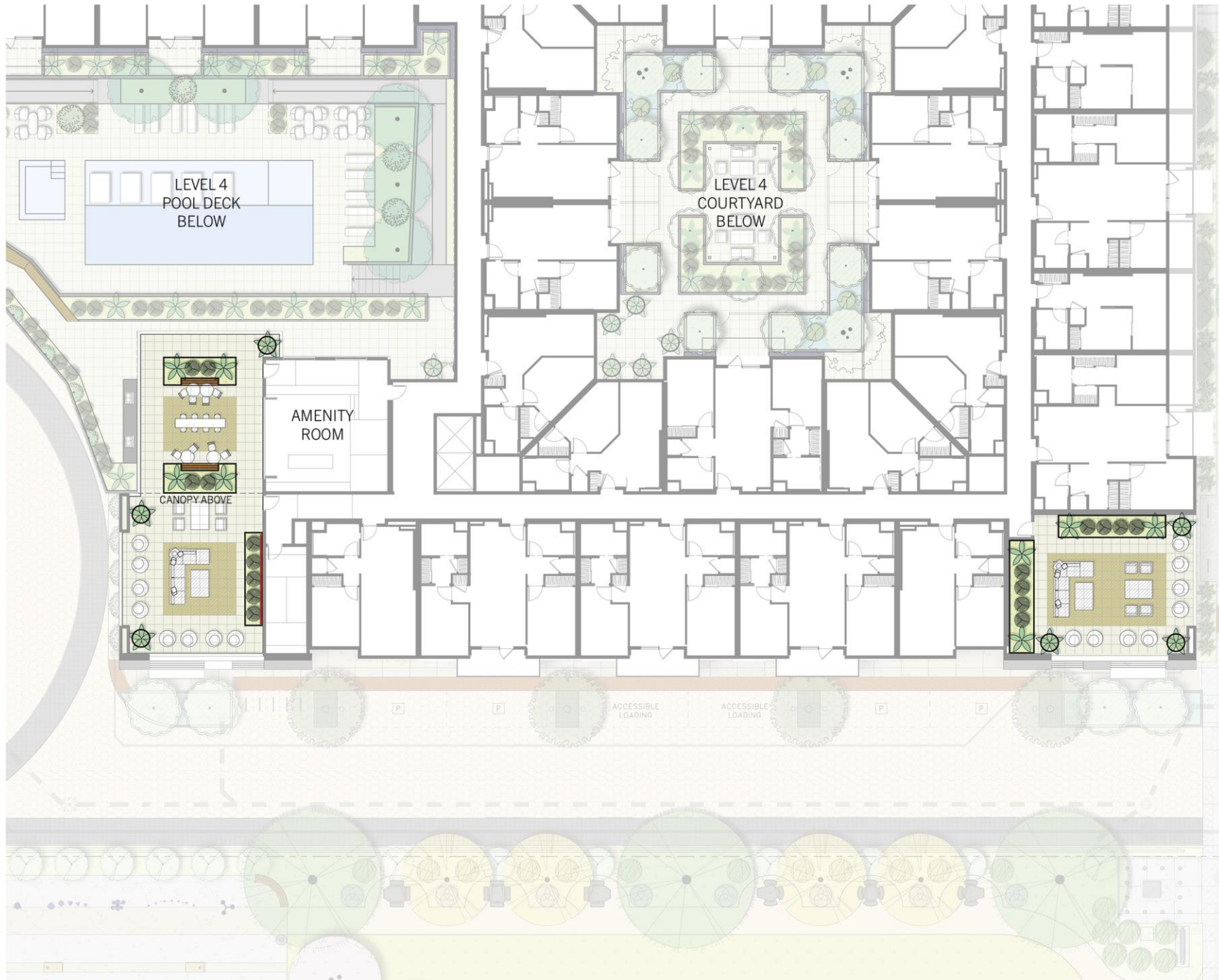
**Yoga**

MOVE-IN  
LOADING




ACCESSIBLE  
LOADING

ACCESSIBLE  
LOADING







**MATERIAL LEGEND**

-  CONCRETE PEDESTAL PAVER TYPE 1
-  CONCRETE PEDESTAL PAVER TYPE 2
-  REGULAR PLANTING
-  RAISED METAL PLANTERS
-  PLANTER POTS
-  BUILT-IN BENCHES
-  OUTDOOR MOVIE SCREEN

-  OUTDOOR FURNISHING
-  OUTDOOR FURNISHING
-  OUTDOOR FURNISHING
-  OUTDOOR FURNISHING

**PLANTING LEGEND**

- REGULAR PLANTING
-  ACCENT SHRUB 15 GALLON
  -  ACCENT SHRUB 5 GALLON





**CALABAZAS CREEK TRAIL**







# Community Outreach

---

- Presentation to Parks & Recreational Commission – March 19, 2024
- Park Survey – March 20 – April 12, 2024
- Neighborhood Meeting – 1,320' radius – April 10, 2024
- Pop-Up Event at Senior Center – April 2, 2024
- Pop-Up Event at Community Center – April 2, 2024
- CEQA Comment period – April 26 – May 26, 2024
- Presentation to Greenbelt Alliance – June 26, 2024
- Presentation to Lakewood Village N'hood Assc'n – July 10, 2024

# 4590 Patrick Henry project features

---

- Implements City's Specific Plan vision
- 284 new residences with **15% affordable** (split evenly between Very Low/Low/Moderate)
- Highly sustainable, Santa Clara Reach Codes, 100% electric, EV chargers
- Variety of transportation choices:
  - Ace shuttle stop in front of building
  - Within ½ mile walking distance to light rail & 5 buses
  - Building 8' wide buffered bike lane along frontage
  - TDM program
- Delivers a new ½ acre turn-key public park & over \$8 million in park fees





4590 Patrick Henry Apartments  
Santa Clara, CA

Thank you

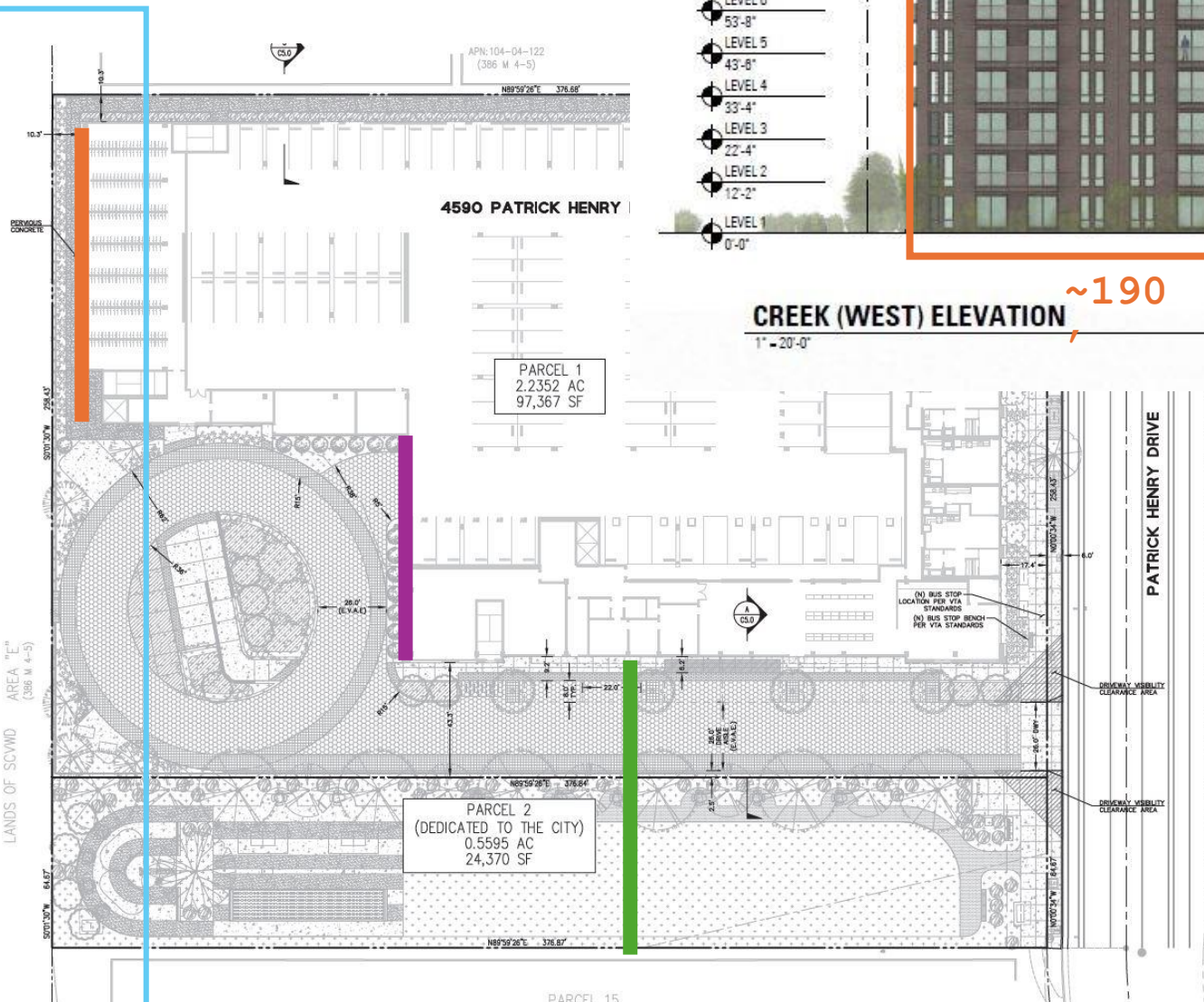
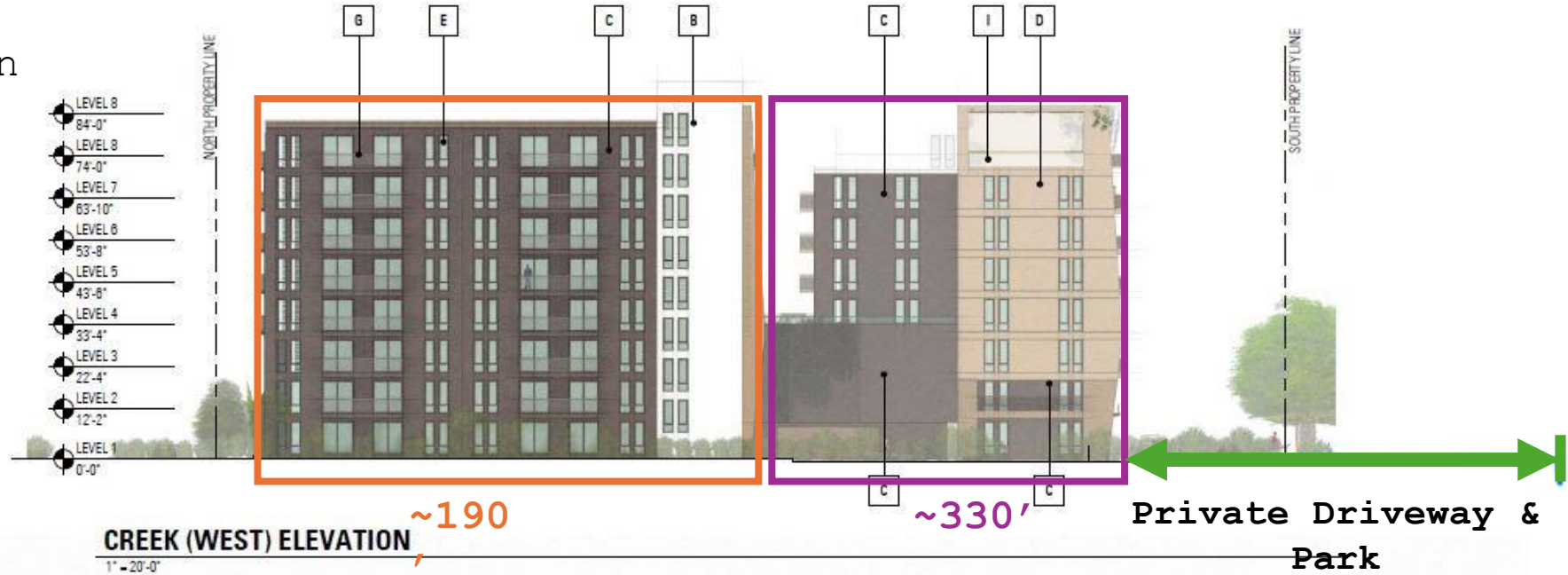
---

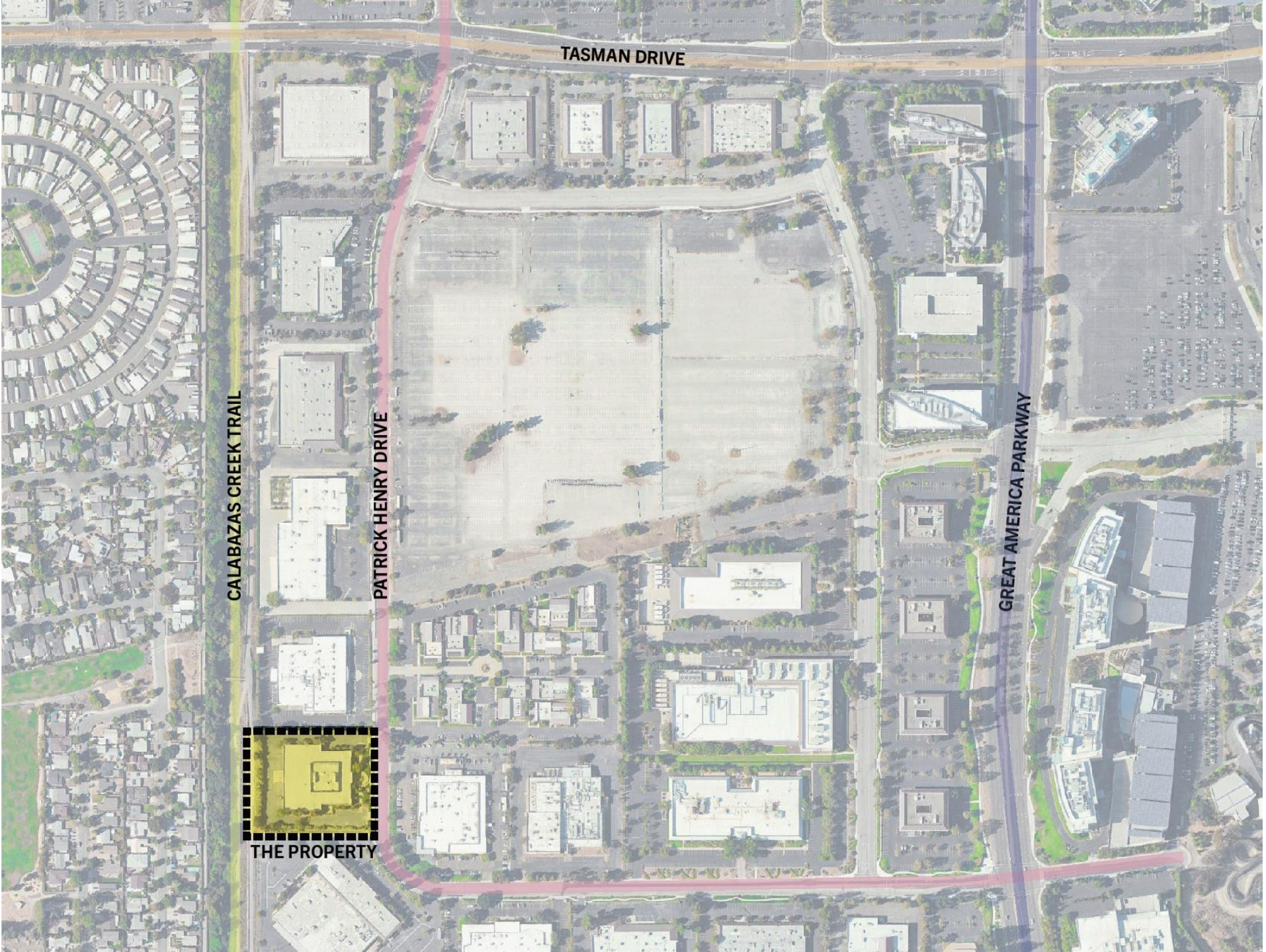




Patrick Henry Drive

# Approximate distances to residential on Manzano in City of Sunnyvale





TASMAN DRIVE

CALABAZAS CREEK TRAIL

PATRICK HENRY DRIVE

GREAT AMERICA PARKWAY



THE PROPERTY



4590 Patrick Henry Apartments  
Santa Clara, CA

Thank you

---