



City of Santa Clara

Meeting Minutes - Draft

Stadium Neighborhood Relations Ad Hoc Subcommittee

03/30/2026

5:00 PM Northside Branch Library 695 Moreland Way, Santa Clara,
CA 95054

The City of Santa Clara is conducting Stadium Neighborhood Relations Ad Hoc Subcommittee meetings in-person and continues to have methods for the public to participate remotely or in-person.

Zoom Link: <https://santaclaraca.zoom.us/j/83593117736>

Phone: 1-669-444-9171

Webinar ID: 835 9311 7736

To submit written public comment before meeting:

Send email to stadiumrelations@santaclaraca.gov by 10 a.m. one day before the date of the meeting. Emails will be forwarded to Committee members and will be uploaded as post agenda supplemental meeting material.

Note: Emails received as public comment will not be read aloud during the meeting.

CALL TO ORDER AND ROLL CALL

The Stadium Neighborhood Relations Ad Hoc Subcommittee meeting was called to order at 5:01p.m by Chair Albert Gonzalez.

Present 3 - Chair Albert Gonzalez, Vice Chair Karen Hardy, and Suds Jain

CONSENT CALENDAR

PUBLIC PRESENTATIONS

There were no public presentation on items not listed on the Agenda.

GENERAL BUSINESS

- 1 [26-353](#) Approval of the December 15, 2025 Stadium Neighborhood Relations Ad Hoc Subcommittee

Attachments: [SCPD Presentation 12_15_2025](#)
[CMO Presentation 12_15_2025](#)
[December 15, 2025 Stadium Neighborhood Relations Ad Hoc Subcommittee Meeting Minutes](#)

The minutes were amended removing Committee Member Raj Chahal from attendance. Committee Member Chahal was not present at the December 15, 2026 Stadium Neighborhood Relations Ad Hoc Subcommittee Meeting.

Adopted as amended

Aye: 3 - Chair Gonzalez, Vice Chair Hardy, and Jain

- 2 [26-382](#) Stadium Neighborhood Relations Ad Hoc Subcommittee Report

A shared presentation was provided by City of Santa Clara staff.

Santa Clara Police Chief Cory Morgan, Santa Clara Police Captain Richard Fitting, and Santa Clara Public Works Director Michael Liw presented a recap of Super Bowl LX security, road, trail pedestrian walkway, and bicycle lane closures.

Santa Clara Public Information Officer Janine De laVega provided an overview of the implemented Super Bowl LX communications plan.

Assistant City Manager Paulina Morales presented and overview of the Levi's Stadium management, operations and financial structure. 2026 major events and key stadium contracts were also mentioned.

Parking concerns and options were addressed in the presentation by City Manager Jovan D. Grogan, Deputy City Manager Christine Jung, Assistant City Manager Morales, and Public Works Director Liw.

Feedback was received on the presented potential parking program to include monitoring and enforcement of the nearby city-owned parking lots.

STAFF REPORT

No reports or referrals.

COMMISSIONERS REPORT

No reports.

ADJOURNMENT

The Stadium Neighborhood Relations Ad Hoc Subcommittee meeting was adjourned at 6:52p.m by Chair Albert Gonzalez.

Santa Clara Stadium Authority

Stadium Neighborhood Relations Subcommittee Meeting

March 30, 2026

The logo for the Santa Clara Stadium Authority (SCSA) is located in the bottom left corner. It consists of a red rectangular box with the letters "SCSA" in white, bold, sans-serif font. Below "SCSA" is a thin white horizontal line, and underneath that line, the words "SANTA CLARA STADIUM AUTHORITY" are written in a smaller, white, sans-serif font. To the left of the red box, there is a black L-shaped graphic element.

SCSA

SANTA CLARA STADIUM AUTHORITY

Agenda

- 1. Opening Remarks**
- 2. December 15, 2025 Meeting Recap**
- 3. Super Bowl LX Recap**
 1. Public Safety
 2. Traffic / Road Closures
 3. Communications Plan
- 4. Overview of Stadium Structure**
 1. Entities
 2. Agreements
- 5. Presentation of Residential Permit Parking Program and Proposed Event Overlay Permit Parking Program**
- 6. Next Steps**

Opening Remarks

- Committee Purpose:
 - Forum for communication with Residents and Businesses impacted by Stadium Events
 - Provide updates on Major Events 2026
 - Evaluate current outreach/communication efforts
 - Develop opportunities to enhance outreach/communication

1st Committee Meeting Recap

- December 15, 2026
- Committee Established & Purpose
- Stadium Operations Overview
- PD Presentation on Annual Operations for Stadium Events
 - Neighborhood Protection Detail
 - Stadium & Event-Related Non-Emergency Hotline
 - Community Response Team
 - Traffic Advisory Posts
- Community Concerns
 - Parking / Parking / Parking

Super Bowl LX

US Department of Homeland Security SEAR 1 event

Comprehensive Security Planning

- Two years of planning, risk assessments, and interagency exercises

Public Safety Allied Partnerships

- ~50 Local, Regional, State & Federal agencies



Unified Command Structure

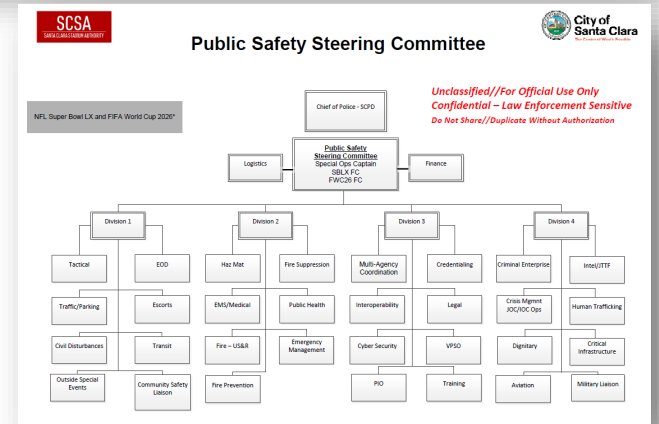
- Multi-agency coordination (local, state, federal): centralized incident command system

Technology & Intelligence Integration

- Real-time intelligence centers, UAS, field-intelligence personnel

Crowd & Traffic Management

- Coordinated road closures, transit planning, and pedestrian safety measures



Super Bowl LX



Super Bowl LX

Transportation / Road Closures

- Safety and security associated with Super Bowl LX required temporary closure of roads and the San Tomas Aquino Creek Trail next to Levi's Stadium.
- Closures occurred in 3 phases starting January 5, 2026

Types of Closures:

- Bicycle Lane
- Roads
- Trail (San Tomas Aquino Creek Trail)
- Pedestrian Walkway

Detours: Local and Regional

Super Bowl LX - Road Closures

NOTICE

Vehicle Detour

January 28, 2026



Safety and security associated with Super Bowl LX will require the temporary closure of public infrastructure around Levi's Stadium.

To support the closure of Tasman Drive between Calle Del Sol and Great America Parkway from January 28-February 13, two vehicle detours will be posted. A Local Detour will be in place at the east and west ends of the closure and will utilize Great America Way, Great America Parkway, Lafayette Street, and Calle De Luna/Calle Del Sol to bypass the closure to the north. A Regional Detour will be posted well in advance of the closure and will alert drivers to take alternative routes to avoid potential delays associated with the closure. The routes include the 101, 237, and local arterial roadways. Detour signage will be posted along the local detour route.

To learn more about the road closures impacting the Santa Clara area for Super Bowl LX, please visit: www.sfbayaresuperbowl.com/getting-around



LEGEND: █ Regional Detour | █ Local Detour | ▨ Road Closures

NOTICE

Vehicle Detour

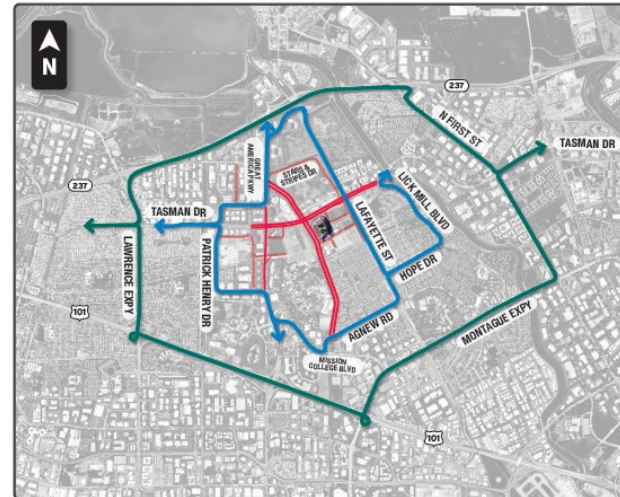
Game Day
February 8, 2026



Safety and security associated with Super Bowl LX will require the temporary closure of public infrastructure around Levi's Stadium.

To support road closures associated with the Super Bowl on February 8, two detours will be utilized. The previously posted Local Detour will be adjusted to reflect increased closure limits on Tasman Drive and the closure of Great America Parkway between Patrick Henry Drive and Bunker Hill Lane. Posted detours will be provided along multiple routes to provide local residents and businesses with alternatives that are most convenient for them during the closure period. The Regional Detour will remain the same, providing alternative routes to drivers who do not have a local area destination.

To learn more about the road closures impacting the Santa Clara area for Super Bowl LX, please visit: www.sfbayaresuperbowl.com/getting-around



LEGEND: █ Regional Detour | █ Local Detour | ▨ Road Closures

Super Bowl LX - Trail Closures

NOTICE

Bike Detour

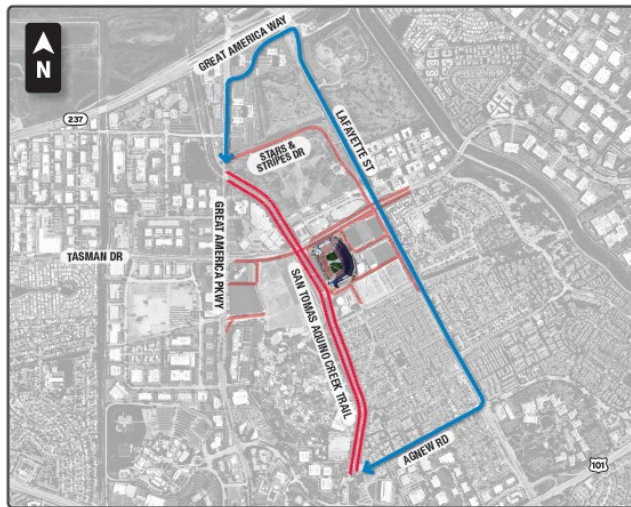
January 29, 2026



Safety and security associated with Super Bowl LX will require the temporary closure of public infrastructure around Levi's Stadium.

The San Tomas Aquino Creek Trail will be closed from January 29-February 10. During this period, bike traffic will be detoured around the closure. Agnew Road, Lafayette Street, Great America Way, and Great America Parkway will be the posted detour route to bypass the Creek Trail closure. Notifications will be posted at the trail connections at Agnew Road and Great America Parkway directing cyclists to the detour route.

To learn more about the road closures impacting the Santa Clara area for Super Bowl LX, please visit: www.sfbayareasuperbowl.com/getting-around



LEGEND: Bike Detour | Road Closures

NOTICE

Bike Detour

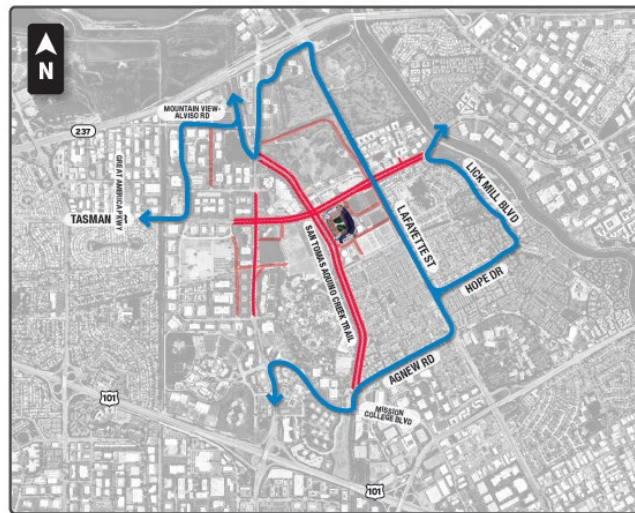
Game Day
February 8, 2026



Safety and security associated with Super Bowl LX will require the temporary closure of public infrastructure around Levi's Stadium.

On Super Bowl Sunday (February 8), Great America Parkway will be closed from Patrick Henry Drive to Bunker Hill Lane. The closure will impact the on-street bike lane and cyclists will be detoured to an alternative route. The detour will begin at Mission College Blvd and will use Agnew Road, Lafayette Street, and Great America Way to help cyclists bypass the closure. Previously posted detours for Tasman Drive will be updated to reflect new closure limits and will utilize Lick Mill Blvd, Hope Drive, Mountain View - Alviso Road, and Patrick Henry for detour routing.

To learn more about the road closures impacting the Santa Clara area for Super Bowl LX, please visit: www.sfbayareasuperbowl.com/getting-around



LEGEND: Bike Detour | Road Closures

Super Bowl LX – Pedestrian Walkway Closures

NOTICE

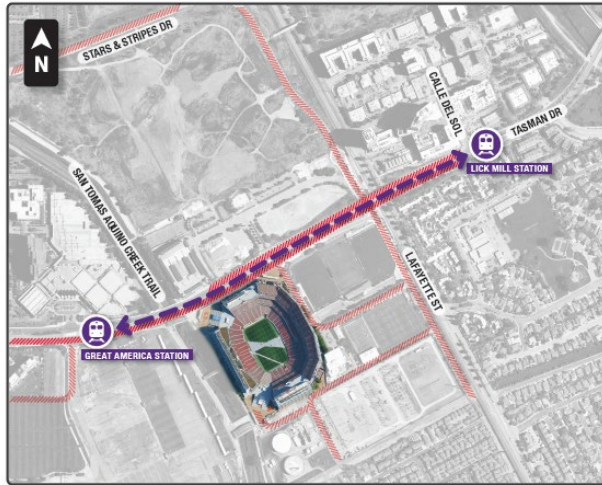
Pedestrian Detour January 28, 2026



Safety and security associated with Super Bowl LX will require the temporary closure of public infrastructure around Levi's Stadium.

During the closure of Tasman Drive from January 28-February 13, sidewalk access on the north and south sides of Tasman will be closed between Convention Center Drive and Calle Del Sol. Given the distance to alternative pedestrian routes, it is suggested that pedestrians needing to bypass the sidewalk closure use the VTA light rail. Stops are provided on either side of the closure with the Lick Mill station on the east side and the Great America Station on the west side. VTA service is typically provided between 6 a.m.-11 p.m. Check VTA website for current schedule and fare information.

To learn more about the road closures impacting the Santa Clara area for Super Bowl LX, please visit: www.sfbayareasuperbowl.com/getting-around



LEGEND: Pedestrian Detour | VTA Station | Road Closures

NOTICE

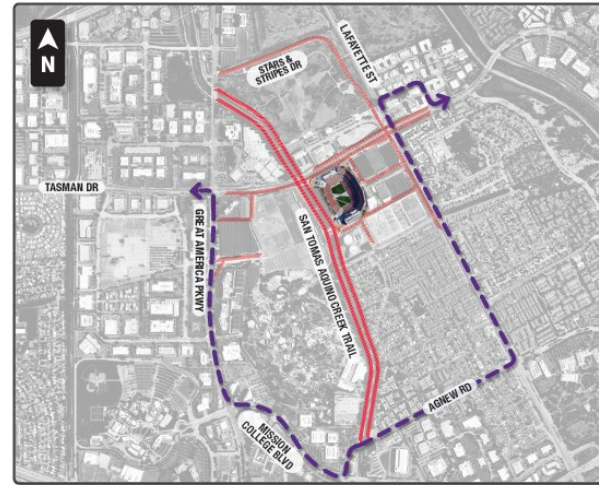
Alternative Pedestrian Detour January 28, 2026



Safety and security associated with Super Bowl LX will require the temporary closure of public infrastructure around Levi's Stadium.

During the closure of Tasman Drive from January 28-February 13, sidewalk access on the north and south sides of Tasman will be closed between Convention Center Drive and Calle Del Sol. While VTA use is suggested, a detour route will be provided for pedestrians looking to bypass the closure on foot. The detour will utilize Lafayette, Agnew, Mission College, and Great America Parkway to move pedestrians around the closure.

To learn more about the road closures impacting the Santa Clara area for Super Bowl LX, please visit: www.sfbayareasuperbowl.com/getting-around



LEGEND: Pedestrian Detour | Road Closures

Super Bowl LX - Pedestrian Walkway Closures

NOTICE

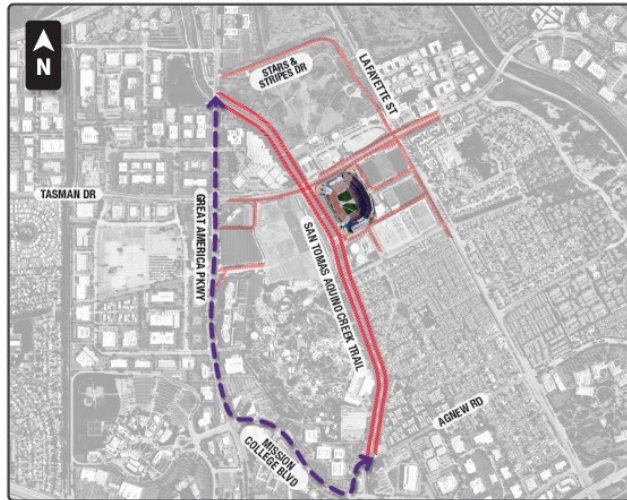
Pedestrian Detour January 29, 2026



Safety and security associated with Super Bowl LX will require the temporary closure of public infrastructure around Levi's Stadium.

The San Tomas Aquino Creek Trail will be closed from January 29-February 10. During this period, pedestrians will be detoured around the closure. Agnew Road, Mission College Boulevard, and Great America Parkway will be the posted detour route to bypass the Creek Trail closure. Notifications will be posted at the trail connections at Agnew Road and Great America Parkway directing pedestrians to the detour route.

To learn more about the road closures impacting the Santa Clara area for Super Bowl LX, please visit: www.sfbayareasuperbowl.com/getting-around



LEGEND: ■ Pedestrian Detour | ■ Road Closures

NOTICE

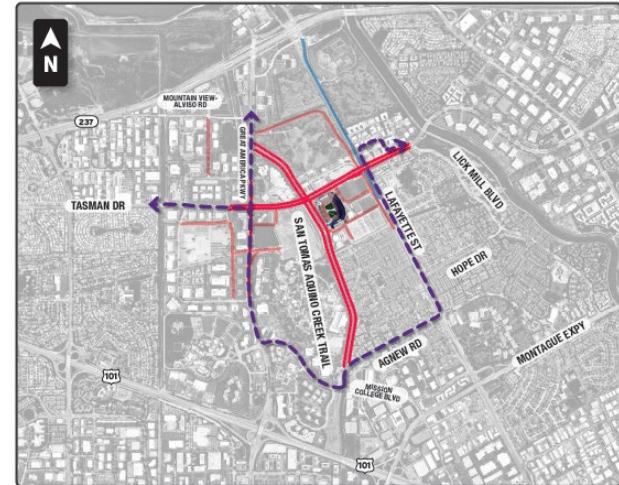
Pedestrian Detour Game Day February 8, 2026



Safety and security associated with Super Bowl LX will require the temporary closure of public infrastructure around Levi's Stadium.

On Super Bowl Sunday (February 8), the Tasman Drive closure will be extended to Lick Mill Blvd on the east side and Old Ironsides on the west side. Pedestrian access on Tasman Drive between Convention Center Drive and Calle Del Sol will be limited to credential staff and Super Bowl ticket holders only. The VTA light rail system will not be providing service between the Lick Mill and Great America stations. Pedestrians are advised to explore other modes of transportation around the closure, but a detour route will be posted for those looking to remain on foot. The detour will utilize the existing detour routing on Great America Parkway, Mission College Blvd, Agnew Street, and Lafayette Street.

To learn more about the road closures impacting the Santa Clara area for Super Bowl LX, please visit: www.sfbayareasuperbowl.com/getting-around



LEGEND: ■ Pedestrian Detour | ■ Road Closures

Communications Plan | SBLX


Audiences

- Residents
- Commuters
- Commercial/Businesses
- Transit Users (ACE, Capital Corridor, VTA)
- San Tomas Aquino Trail Users
- Game-Day Attendees

As the Bay Area prepares to host the Super Bowl, some **streets in your neighborhood** will have temporary closures and/or parking restrictions.


SUPER BOWL LX ROAD CLOSURE NOTICE

What to expect
Beginning in late January 2026 there will be road closures **in or near your neighborhood.**



Please scan the QR code or go to <https://www.sfbayareasuperbowl.com/getting-around> for more details on exact locations and dates/times.

Thank you! We appreciate your patience and partnership as the Bay Area welcomes Super Bowl LX.
Bay Area Host Committee



Communications Plan | SBLX

SBLX Road Closures Phases I-III

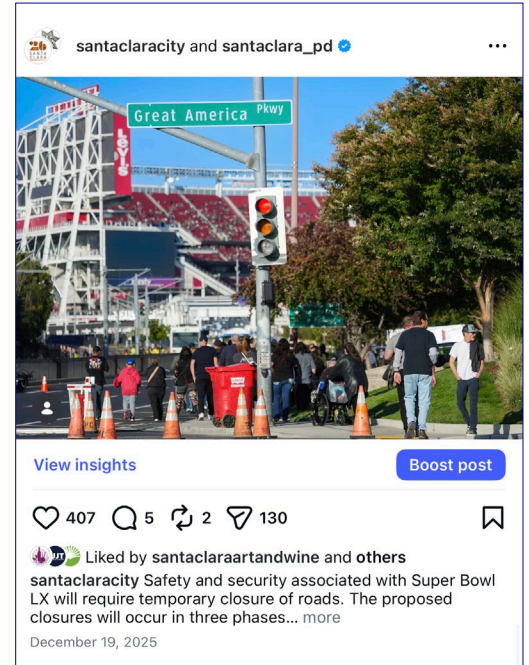
- Dates sent: Dec. 19, 2025, Jan. 23, 2026

Information Hub –

- Bay Area Host Committee (BAHC) website

Public Notifications

- GovDelivery Email Platform – 56K subscribers
- City website
- Social media – City, SCPD (Facebook, X, Instagram and Nextdoor)
- BAHC mailers sent to Northside residents and businesses on Jan. 20.
- Reamplified by KTVU, NBC Bay Area, KQED, CBS News, SF Chronicle, KRON 4, ABC7



Communications Plan | SBLX

Social Media Collaboration Posts

Transportation

- VTA, MTC Bay Area, Transit App
- VTA, Clipper Cards
- Spare the Air
- Caltrans

Public Safety

- SCC Alert SCC
- Pyrotechnics Alerts from SCFD



Communications Plan | SBLX

Physical Signage

- Changeable messaging signs in advance of road closures
- A-Frames on bicycle path

BAHC Community Outreach

- BPAC
- Silicon Valley Bicycle Coalition
- Transit agencies

Other Distribution Channels

- Levi's Stadium Email Distribution
- Levi's Stadium social media



Levi's Stadium Structure – Overview

- **City** owns the land
- **Stadium Authority (SCSA)** owns the stadium
- **49'ers** use the stadium during the NFL season (6 months)
- **SCSA** oversees the stadium during the non-NFL season (6 months) and contracts with a management company to book events

- **Management Company** handles day-to-day operations and maintenance year-round
- **Key Point:**
- Revenue and expenses are shared differently depending on who is using the stadium (NFL vs. non-NFL season)

Levi's Stadium Structure Overview

There are five entities involved in ownership, operation, and management of the Stadium

- **City of Santa Clara**

The City owns the land on which the Stadium is built and leases it to the Santa Clara Stadium Authority (SCSA). The City is also responsible for providing public safety, traffic control, and emergency response services for all Stadium events, with costs reimbursed by Stadium-related entities.

Levi's Stadium Structure Overview

- **Santa Clara Stadium Authority (SCSA)**

The Santa Clara Stadium Authority exists as a public body, separate and distinct from the City of Santa Clara, and was established to provide for the development and operation of Levi's® Stadium. The elected members of the City Council serve as the governing board for the Authority, with the Mayor serving as chair, the City Manager as the Executive Director, and the City Attorney as the Authority's General Counsel. Levi's® Stadium, the region's premier sports and entertainment venue, is home to the San Francisco 49ers and the host site of Super Bowl LX and FIFA World Cup in 2026. For more information, visit SantaClaraCA.gov/StadiumAuthority.

Levi's Stadium Structure Overview

- **Forty Niners Football Company (TeamCo)**

TeamCo owns and operates the San Francisco 49ers. During the NFL season, TeamCo subleases the Stadium from StadCo for all NFL games and related team activities.

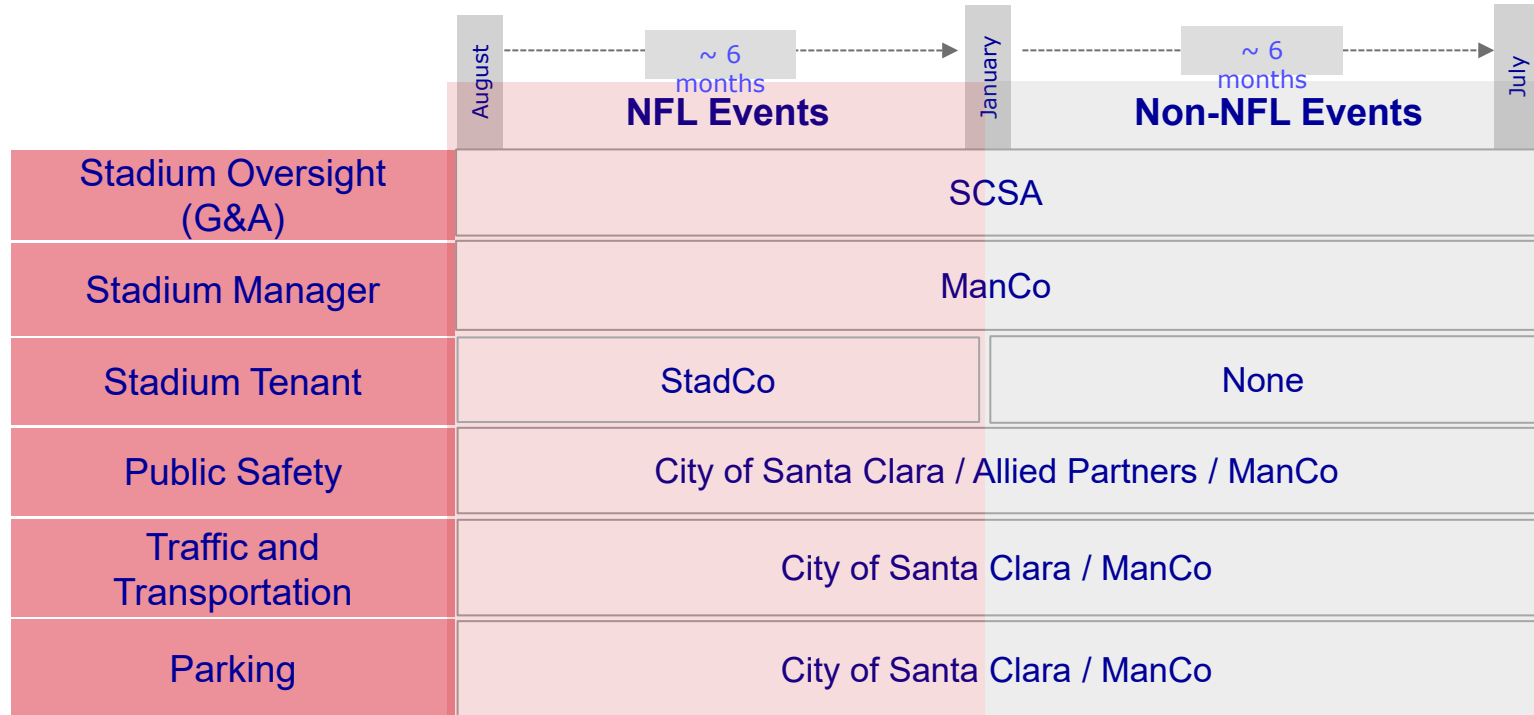
- **Forty Niners SC Stadium Company (StadCo)**

StadCo is the primary tenant of the Stadium during the NFL season (approximately six months). During this time, StadCo subleases the Stadium to TeamCo and is responsible for certain operational and financial obligations under the Stadium Lease.

Levi's Stadium Structure Overview

- **Forty Niners Stadium Management Company (ManCo)**
ManCo manages the day-to-day operations of the Stadium year-round, including both NFL and non-NFL events. ManCo operates under contract with StadCo during the NFL season and with SCSA during the non-NFL season.

Stadium Operating Structure



2026 Major Events

Bay Area Host Committee (BAHC)

BAHC is the nonprofit organization that successfully petitioned the NFL and FIFA to host the Super Bowl and FIFA World Cup matches at the Stadium. BAHC serves as the primary coordinating body, working closely with the NFL, FIFA, the City, SCSA, StadCo and ManCo to plan and deliver these events.

- **Super Bowl LX –**

BAHC entered into a League Event Agreement with the City, SCSA, StadCo, and ManCo, which outlines each entity's obligations related to hosting the Super Bowl.

- **FIFA World Cup -**

BAHC executed an Assumption and Assignment Agreement with the City, SCSA, and ManCo that defines the respective roles and responsibilities for hosting the 6 FIFA World Cup matches.

Key Stadium Contracts

Ground Lease

- **Approved:** March 28, 2012 (amended with 2024 settlement)
- **Between:** City (Landlord), and Stadium Authority (as Tenant)
- **Purpose:** City leases land to Stadium Authority for development and operations of Stadium.
- **Includes:** Terms for payment to City of “base rent,” “performance rent” and “excess revenues”.

Stadium Lease

- **Approved:** March 28, 2012 (Amended and Restated June 19, 2013, and again with 2024 settlement)
- **Between:** Stadium Authority (Landlord) and StadCo (Tenant)
- **Purpose:** Stadium Authority leases Stadium to StadCo for NFL Season (6 months).
- **Includes:** Economic terms for Non-NFL Events and year-round Stadium revenue and expenses terms.

Management Agreement

- **Approved:** March 8, 2012 (with four subsequent amendments)
- **Between:** Stadium Authority, StadCo, and ManCo
- **Purpose:** Set forth ManCo’s Stadium management obligations.
- **Includes:** ManCo to manage/operate Stadium for Non-NFL Events in “Required Condition” with “controlled” costs and “maximized revenues”.

Stadium Operations Agreement

- **Approved:** August 18, 2014
- **Between:** Stadium Authority and StadCo
- **Purpose:** Clarify/coordinate on Stadium management/cost allocation issues given split operations.
- **Includes:** Procurement standards; Stadium Operations and Maintenance Plans; terms for allocating Public Safety Capital Expenditures.

Parking – Biggest Concern

- Biggest issue raised at 1st Subcommittee meeting
 - Stadium Attendees parking in the neighborhoods and walking over; impacting Quality of Life
- Residents stated receiving initial Parking Permits (when Stadium was opened), provided to residents
- No Parking Restrictions are codified in Santa Clara's municipal Code or via Resolution
- PD deploys officers in the neighborhoods during stadium events
- 49ers deploy signage during event days

Parking Program Options

1. **Current Residential Permit Parking Program (RPPP)**
2. **Alternative Parking Program:**
 - Stadium Event Overlay Parking Program (SEOPP)

Parking Program Options

Residential Permit Parking Program (RPPP)

- 2003 – Council approves Ordinance 1781 creating the Residential Permit Parking Program (RPPP)
- Establish zones in residential neighborhoods where street parking is allowed “*by permit only*”
- Guidelines to establish RPPP zones (6 steps)

-
- | | |
|-----------------------------------|---------------------------------------|
| 1) Property owner RPPP request | 4) Permit Parking Needs Analysis |
| 2) Initial City coordination | 5) Final Property Owner Ballot* |
| 3) Initial property owner ballot* | 6) City Council Final Review/Approval |

*Simple majority concurrence (50% + 1) is needed to proceed from Step 3 to Step 4 and Step 5 to Step 6.

Parking Program Options

Residential Permit Parking Program (RPPP)

- If a RPPP zone is established for a City street, Police can issue parking permits to residents to park in RPPP zones.
- Two permits per qualifying address are allowed.
- Two visitor permits per address are allowed.
- Permits are valid from July 1 – June 30
- Permits issued online (<https://santaclara.permitinfo.net>)
- Permits are virtual and links to vehicle license plates
- Permits are \$34 each (FY 2025-26 rate)



Parking – Biggest Concern

Residents' efforts to implement a Residential Permit Parking Program (RPPP) Zone Near the Stadium

- August 2024, two formal petitions from Mission Park neighborhood (south of Stadium) to create a RPPP zone on the following streets:
 - First Petition: Gianera Street, Lakeshore Drive, Lass Drive, Alcalde Street, Cheeney Street, Wilcox Avenue, and Esperanca Avenue.
 - Second Petition: Silveria Court, Rambo Court, Regina Court, Sawyer Court, Remo Court, Schott Court, Second Street, Fuller Street, Third Street, Fillmore Street, Gillmor Street, Kingsbury Circle, Davis Street, Basset Street.
- Focus on First Petition first (closer to Stadium)
- First Round ballots mailed on November 2024, due date extended twice.
- Additional follow-up mailers sent.
- Final Results: 147 properties of 408 properties surveyed voted "Yes" -- 36%
- RPPP requires a simple majority (50% + 1) to move to next steps
- Process ended due to lack of support, petitioner notified

Proposed Stadium Event Overlay Parking Program

Purpose

- Manage neighborhood parking impacts during major events at Levi's Stadium
- Provide a flexible, event-based alternative to the City's existing Residential Parking Program

Program Scope

- Overlay parking zone(s) activated during major event days only
- Limited to high-impact neighborhoods adjacent to Levi's Stadium
- Location(s) to be determined through staff research, community engagement, and resident input

Proposed Stadium Event Overlay Parking Program

Permitting Structure

- Types of permits
 - Resident and Guest
- Registration and permit renewal

Enforcement

- Penalties expected to exceed event parking rates
- Citations issued during event days for noncompliance
- Potential escalating penalties for repeat violations

Summary of Parking Programs

Residential Permit Parking Program	Proposed Stadium Overlay Event Parking Program
Activated 24/7	Activated only on major event days
Request for location initiated by community, requires majority vote for all residents (via ballots) and final Council approval	TBD – Seeking feedback
2 permits issued for residents and 2 permits issued for guests per qualifying address	TBD – Seeking feedback
Permits issued online, are virtual, and links to vehicle license plates	TBD – Seeking feedback

Feedback on Potential Parking Program

- What primary goals we are trying to achieve through a parking program (e.g., resident parking access, safety, or mitigating event impacts)?
- Which program do you think will be more successful in achieving the goal(s)?
- How should success be measured (e.g., parking availability, reduced complaints, safety improvements, etc.)?
- How will each program option impact residents, renters, and multi-family housing differently?
- What geographic area should be included?
- How many permits should be issued per qualifying address (for residents, guests)?
- What features would residents like to see in the enrollment and permitting process for the proposed SEOPP?
- What incentives or penalties would support compliance?
- What trade-offs are residents willing to accept (e.g., stricter rules vs. convenience for guests)?

Next Steps

Stay Updated:

- Website: www.santaclaraca.gov/stadiumrelations
- Email: stadiumrelations@santaclaraca.gov

- Next Meeting:
 - May 2026
 - Agenda Items
 - FIFA Impacts
 - Stadium Financial Overview

