



AT&T SITE NUMBER: CCL06126

AT&T SITE NAME: CCL06126

3111 BENTON STREET
 SANTA CLARA, CA 95051
 JURISDICTION: CITY OF SANTA CLARA
 APN: 290-27-006

INITIATIVE / PROJECT: NSB
 USID#: 298767
 FA LOCATION CODE: 15376635
 RFDS ID #: 4289118
 RFDS VERSION: 4.00
 RFDS DATE: 10/11/23
 PACE JOB#: MRSFR073883
 PTN#: 3701A0WFDV

SITE TYPE: OUTDOOR EQUIPMENT / BROADLEAF MONOTREE

Issued For:
 CCL06126
 CCL06126
 3111 BENTON STREET
 SANTA CLARA, CA 95051

PREPARED FOR

 5001 Executive Parkway
 San Ramon, California 94583

Vendor:

AT&T SITE NO: CCL06126
 PROJECT NO: -
 DRAWN BY: C. COLSTON
 CHECKED BY: J. GRAY
 APPROVED BY: -

ISSUE STATUS			
REV	DATE	DESCRIPTION	CAD
1	11/17/23	ZD 100%	C.T.C.
0	08/21/23	ZD 90%	C.T.C.

Licensee:
**PRELIMINARY:
 NOT FOR
 CONSTRUCTION**
 KEVIN R. SORENSEN
 S1469

IT IS A VIOLATION OF LAW FOR ANY PERSON
 WHOSE BUSINESS THEY ARE ACTING UNDER THE
 DIRECTION OF A LICENSED PROFESSIONAL
 ENGINEER, TO ALTER THIS DOCUMENT.

ENGINEER:

 6445 Santa Clara Rd, Suite E, Clayton, CA 95020
 Contact: Kevin Sorenson | Phone: 916-960-1030
 E-Mail: kevin@streamlineeng.com | Fax: 916-960-1941

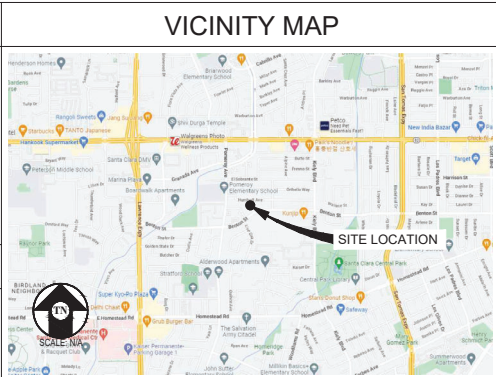
SHEET TITLE:
TITLE SHEET

SHEET NUMBER:
T-1.1

PROJECT DESCRIPTION

A (N) AT&T UNMANNED TELECOMMUNICATION FACILITY CONSISTING OF INSTALLING:

- (N) LEASE AREA W/ (N) GROUND MOUNTED EQUIPMENT CABINETS & (N) DIESEL GENERATOR & (N) UTILITIES TO (N) SITE LOCATION.
- (N) BROADLEAF MONOTREE W/ (N) ANTENNAS & ANTENNA EQUIPMENT.



CODE COMPLIANCE

ALL WORK & MATERIALS SHALL BE PERFORMED & INSTALLED IN ACCORDANCE WITH THE CURRENT EDITIONS OF THE FOLLOWING CODES AS ADOPTED BY THE LOCAL GOVERNING AUTHORITIES. NOTHING IN THESE PLANS IS TO BE CONSTRUED TO PERMIT WORK NOT CONFORMING TO THESE CODES:

- 2022 CALIFORNIA ADMINISTRATIVE CODE, PART 1, TITLE 24 C.C.R.
- 2022 CALIFORNIA BUILDING CODE (CBC), PART 2, VOLUME 182, TITLE 24 C.C.R. (2021 INTERNATIONAL BUILDING CODE AND 2022 CALIFORNIA AMENDMENTS)
- 2022 CALIFORNIA ELECTRICAL CODE (CEC), PART 3, TITLE 24 C.C.R. (2020 NATIONAL ELECTRICAL CODE AND 2022 CALIFORNIA AMENDMENTS)
- 2022 CALIFORNIA MECHANICAL CODE (CMC) PART 4, TITLE 24 C.C.R. (2021 UNIFORM MECHANICAL CODE AND 2022 CALIFORNIA AMENDMENTS)
- 2022 CALIFORNIA PLUMBING CODE (CPC), PART 5, TITLE 24 C.C.R. (2021 UNIFORM PLUMBING CODE AND 2022 CALIFORNIA AMENDMENTS)
- 2022 CALIFORNIA ENERGY CODE (CEC), PART 6, TITLE 24 C.C.R.
- 2022 CALIFORNIA FIRE CODE, PART 9, TITLE 24 C.C.R. (2021 INTERNATIONAL FIRE CODE AND 2022 CALIFORNIA AMENDMENTS)
- 2022 CALIFORNIA GREEN BUILDING STANDARDS CODE, PART 11, TITLE 24 C.C.R.
- 2022 CALIFORNIA REFERENCED STANDARDS, PART 12, TITLE 24 C.C.R.

ANSI/EIA-TIA-222-H

ALONG WITH ANY OTHER APPLICABLE LOCAL & STATE LAWS AND REGULATIONS

PROJECT INFORMATION

SITE NAME:	CCL06126	SITE ACQUISITION COMPANY:	COMPLETE WIRELESS CONSULTING 2009 V STREET SACRAMENTO, CA 95818
SITE #:	CCL06126	LEASING CONTACT:	ATTN: ROCKY CORDOVA (916) 616-0468 RCORDOVA@COMPLETEWIRELESS.NET
COUNTY:	SANTA CLARA	ZONING CONTACT:	ATTN: STEVE PROO (916) 838-6713 SPROO@COMPLETEWIRELESS.NET
JURISDICTION:	CITY OF SANTA CLARA	CONSTRUCTION CONTACT:	BECHTEL KEITH CONNER (408) 306-3801 GKCONNER@BECHTEL.COM
APN:	290-27-006		
SITE ADDRESS:	3111 BENTON STREET SANTA CLARA, CA 95051		
CURRENT ZONING:	PUBLIC / QUASI (B)		
CONSTRUCTION TYPE:	V-B		
OCCUPANCY TYPE:	U, (UNMANNED COMMUNICATIONS FACILITY)		
POWER:	SILICON VALLEY POWER		
LATITUDE:	N 37° 20' 48.69" NAD 83 N 37.346859° NAD 83		
LONGITUDE:	W 121° 59' 05.42" NAD 83 W 121.984841° NAD 83		
GROUND ELEVATION:	98' AMSL		
PROPERTY OWNER:	SANTA CLARA FIRST BAPTIST CHURCH 3111 BENTON STREET SANTA CLARA, CA 95051		
APPLICANT:	AT&T MOBILITY 5001 EXECUTIVE PARKWAY SAN RAMON, CA 94583		

DRIVING DIRECTIONS

FROM: 5001 EXECUTIVE PARKWAY, SAN RAMON, CA 94583
 TO: 3111 BENTON STREET, SANTA CLARA, CA 95051

1. HEAD SOUTHWEST
2. TURN RIGHT
3. TURN LEFT TOWARD EXECUTIVE PKWY
4. TURN RIGHT TOWARD EXECUTIVE PKWY
5. TURN RIGHT ONTO EXECUTIVE PKWY
6. TURN RIGHT ONTO CAMINO RAMON
7. USE THE RIGHT 2 LANES TO TURN RIGHT ONTO BOLLINGER CANYON RD
8. USE THE RIGHT LANE TO MERGE ONTO I-680 S VIA THE RAMP TO SAN JOSE
9. MERGE ONTO I-680 S
10. TAKE EXIT 6 FOR MONTAGUE EXPWY
11. MERGE ONTO MONTAGUE EXPWY
12. CONTINUE ONTO SAN TOMAS EXPWY
13. TURN RIGHT ONTO BENTON ST
14. TURN LEFT

END AT: 3111 BENTON STREET, SANTA CLARA, CA 95051
 ESTIMATED TIME: 1 HOUR ESTIMATED DISTANCE: 38.8 MILES

SHEET INDEX

SHEET	DESCRIPTION	REV	SHEET	DESCRIPTION	REV
T-1.1	TITLE SHEET	-			
C-1	TOPOGRAPHIC SURVEY	-			
C-2	TOPOGRAPHIC SURVEY	-			
A-1.1	OVERALL SITE PLAN	-			
A-1.2	ENLARGED SITE PLAN	-			
A-1.3	ENLARGED BROADLEAF MONOTREE PLAN	-			
A-1.4	EQUIPMENT PLAN	-			
A-2.1	ANTENNA PLANS	-			
A-3.1	ELEVATIONS	-			
A-3.2	ELEVATIONS	-			
A-4.1	ANTENNA DETAILS	-			
A-4.2	EQUIPMENT DETAILS	-			
E-1.1	ELECTRICAL PLAN	-			

DATE OF SURVEY: 01-19-23
 SURVEYED BY OR UNDER DIRECTION OF: KENNETH D. GEIL, R.C.E.
 14803

LOCATED IN THE COUNTY OF SANTA CLARA, STATE OF CALIFORNIA
 BEARINGS SHOWN ARE BASED UPON MONUMENTS FOUND AND
 RECORD INFORMATION. THIS IS NOT A BOUNDARY SURVEY.

ELEVATIONS SHOWN ON THIS PLAN ARE BASED UPON U.S.G.S.
 N.A.V.D. 88 DATUM. ABOVE MEAN SEA LEVEL.

N.G.V.D. 1929 CORRECTION: SUBTRACT 2.73' FROM ELEVATIONS
 SHOWN.

CONTOUR INTERVAL: N.A.

FEMA FLOOD ZONE "X" PER FIRM 06085C0226J DATED 05-18-2009

CONTRACTOR IS RESPONSIBLE TO VERIFY LEASE AREA PRIOR TO
 CONSTRUCTION.

ASSESSOR'S PARCEL NUMBER: 290-27-006

OWNER(S): SANTA CLARA FIRST BAPTIST CHURCH
 3111 BENTON STREET
 SANTA CLARA, CA 95051

A.T. & T.

Project Name: CCL06126

Project Site Location: 3111 Benton Street
 Santa Clara, CA 95051

Assessor's Parcel No.: 290-27-006

Date of Observation: 07-12-23

Equipment/Procedure Used to Obtain Coordinates: Trimble GeoXT post
 processed with Pathfinder Office software.

Type of Antenna Mount: Proposed Monopine

Coordinates:

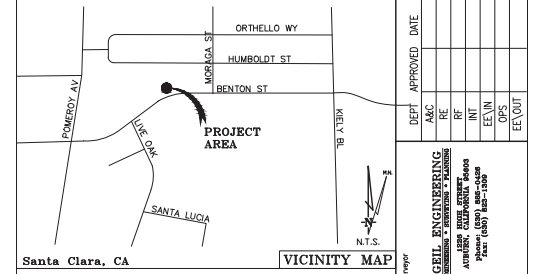
Latitude: N 37°20'48.69" (NAD83) N 37°20'48.90" (NAD27)

Longitude: W 121°59'05.42" (NAD83) W 121°59'01.57" (NAD27)

Latitude: N 37.346859° (NAD83) N 37.346917° (NAD27)

Longitude: W 121.984841° (NAD83) W 121.983771° (NAD27)

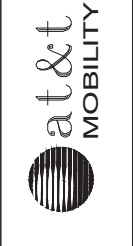
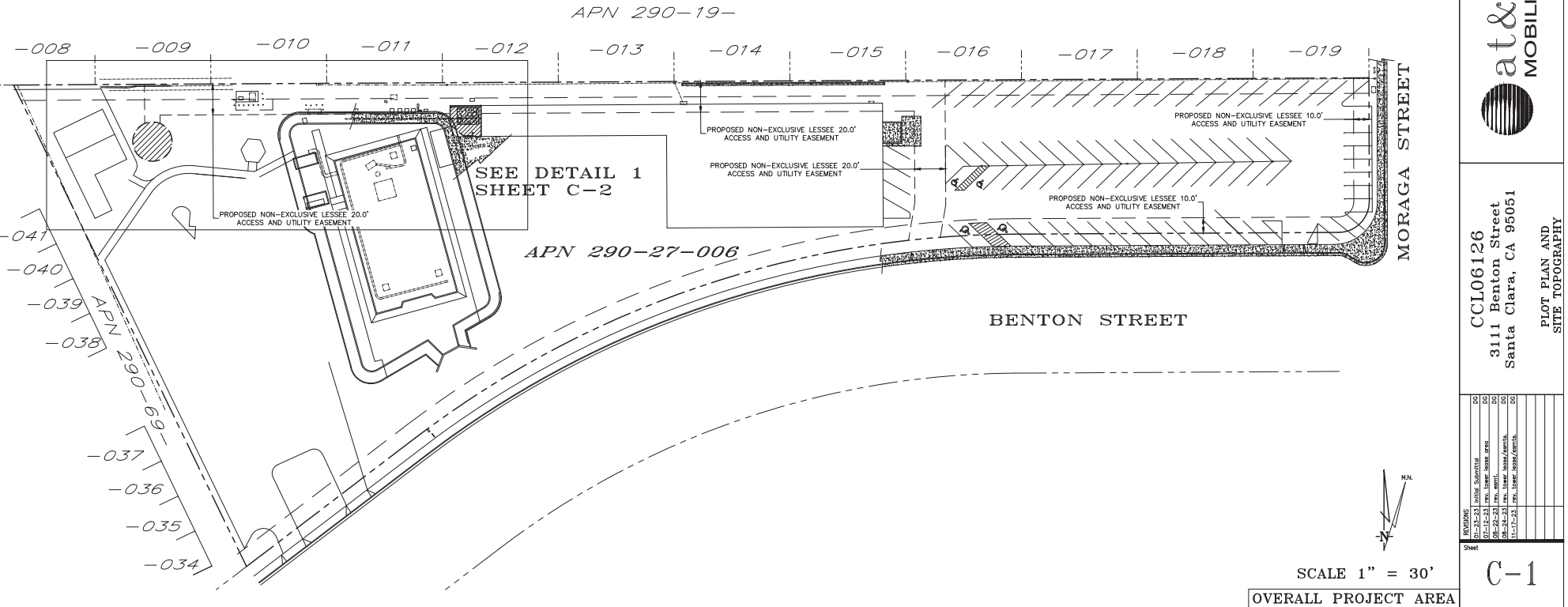
ELEVATION of Ground at Structure (NAVD88) 98' AMSL



DEPT	APPROVED	DATE
ASAC		
CE		
SE		
INT		
EXT		
DEPS		
ELEV OUT		

THESE DRAWINGS AND/OR THE ACCOMPANYING SPECIFICATION AS INSTRUMENTS OF SERVICE, ARE THE EXCLUSIVE PROPERTY OF GEIL ENGINEERING AND THEIR USE AND PUBLICATION SHALL BE RESTRICTED TO THE ORIGINAL SITE AND CARRIER FOR WHICH THEY ARE PREPARED. REUSE, REPRODUCTION OR PUBLICATION BY ANY METHOD, IN WHOLE OR IN PART, IS PROHIBITED EXCEPT BY WRITTEN PERMISSION FROM GEIL ENGINEERING. TITLE TO THESE PLANS AND/OR SPECIFICATIONS SHALL REMAIN WITH GEIL ENGINEERING WITHOUT PREJUDICE AND VISUAL CONTACT WITH THEM SHALL CONSTITUTE PRIMA FACIE EVIDENCE OF ACCEPTANCE OF THESE RESTRICTIONS.

BOUNDARY SHOWN IS BASED ON MONUMENTATION FOUND AND RECORD INFORMATION. THIS IS NOT A BOUNDARY SURVEY. THIS IS A SPECIALIZED TOPOGRAPHIC MAP WITH PROPERTY LINES AND EASEMENTS BEING A GRAPHIC DEPICTION BASED ON INFORMATION GATHERED FROM VARIOUS SOURCES OF RECORD AND AVAILABLE MONUMENTATION FOUND DURING THE FIELD SURVEY. NO EASEMENTS WERE RESEARCHED OR PLOTTED. PROPERTY LINES AND LINES OF TITLE WERE NOT INVESTIGATED NOR SURVEYED. NO PROPERTY MONUMENTS WERE SET.

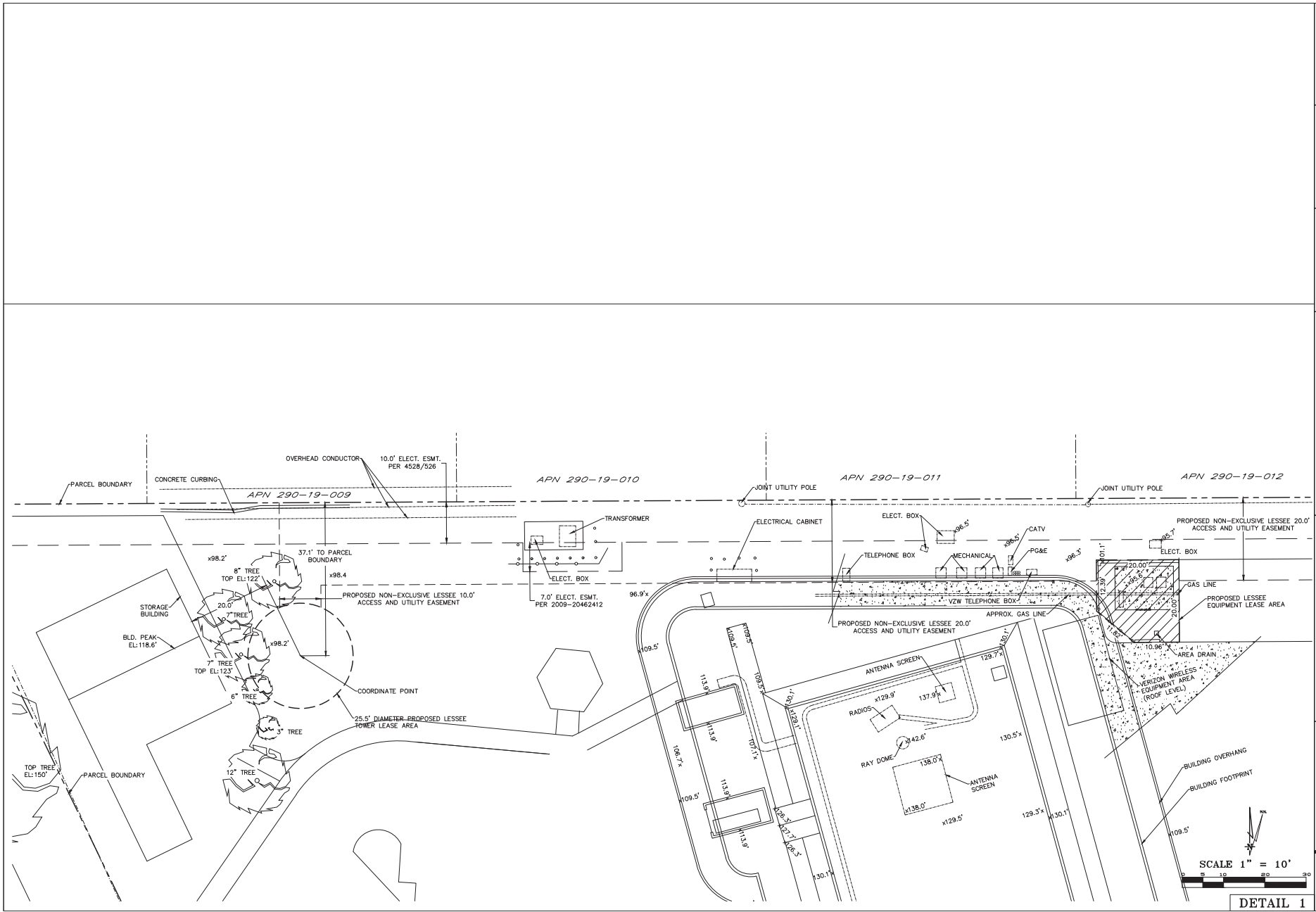


CCL06126
 3111 Benton Street
 Santa Clara, CA 95051

REVISIONS	DATE	BY	CHKD	APP'D
01-23-23	rev.	kdw	kdw	kdw
08-24-23	rev.	kdw	kdw	kdw
11-17-23	rev.	kdw	kdw	kdw

Sheet
C-1

OVERALL PROJECT AREA



DEPT	APPROVED	DATE
ASC		
SE		
INT		
EVN		
OPS		
EVE/OUT		

at&t
MOBILITY

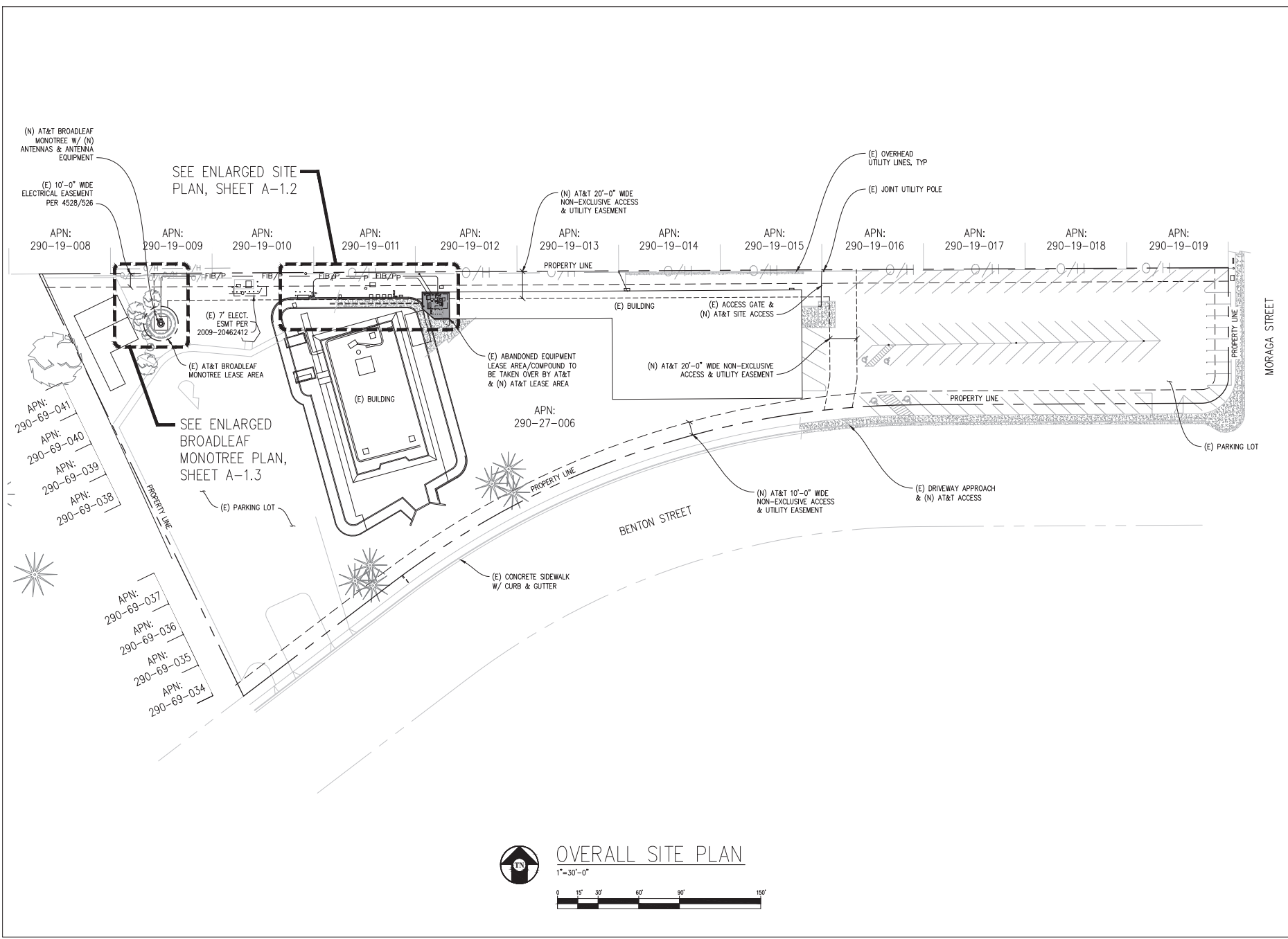
CCL06126
3111 Benton Street
Santa Clara, CA 95051

PLOT PLAN AND
SITE TOPOGRAPHY

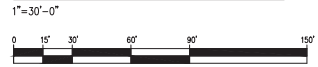
Sheet
C-2

SCALE 1" = 10'
0 10 20 30

DETAIL 1



OVERALL SITE PLAN



Issued For:
CCL06126
CCL06126
 3111 BENTON STREET
 SANTA CLARA, CA 95051

PREPARED FOR

 5001 Executive Parkway
 San Ramon, California 94583

Vendor:

COMPLETE
 Wireless Consulting, Inc.

AT&T SITE NO: CCL06126
 PROJECT NO: -
 DRAWN BY: C. COLSTON
 CHECKED BY: J. GRAY
 APPROVED BY: -

ISSUE STATUS			
REV	DATE	DESCRIPTION	CAD
1	11/17/23	ZD 100%	C.T.C.
0	08/21/23	ZD 90%	C.T.C.

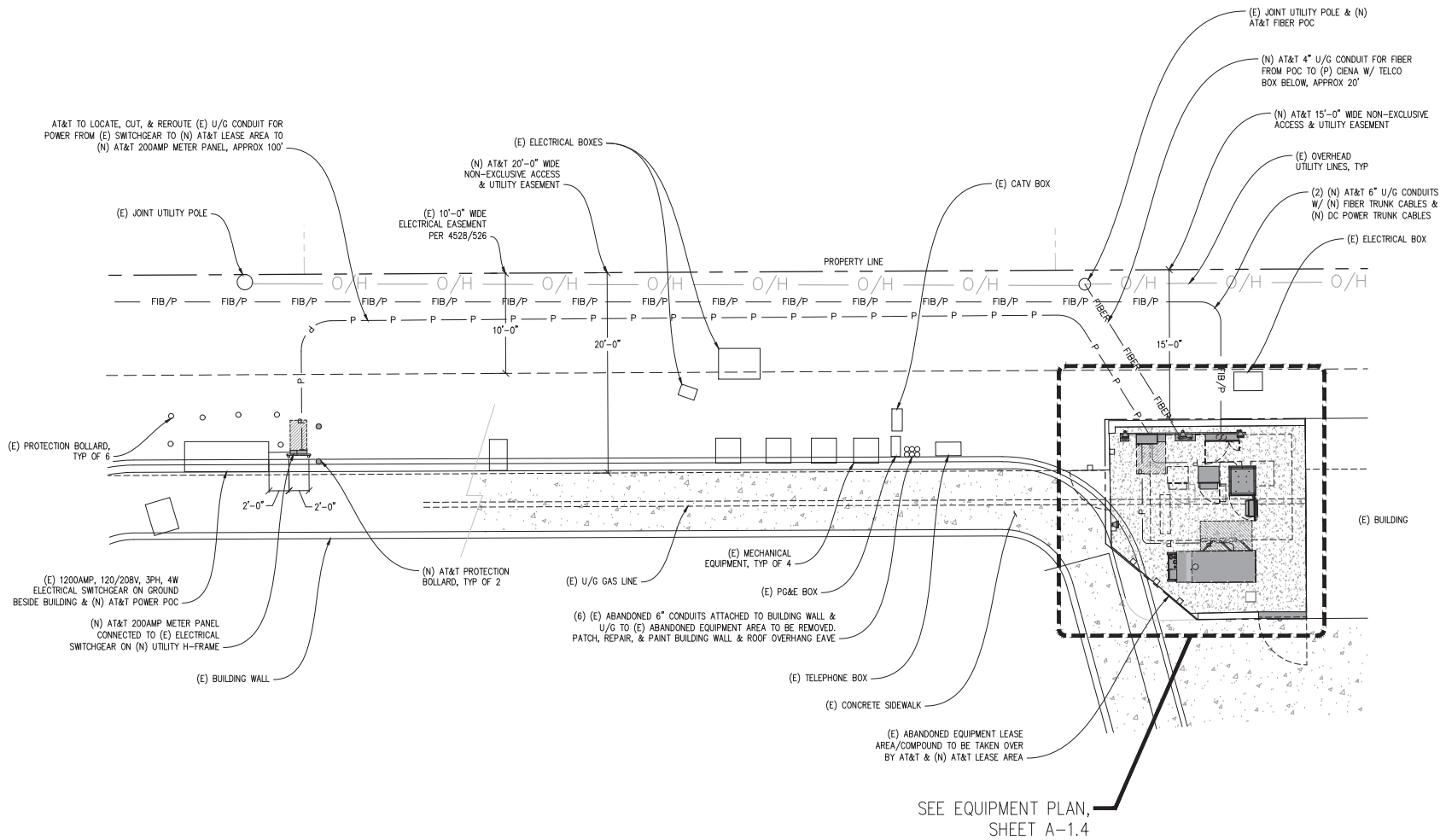
Licensee:
PRELIMINARY:
NOT FOR
CONSTRUCTION
 KEVIN R. SORENSEN
 S1469

ENCLOSURE:

 8445 Santa Clara Road, Suite 600, Santa Clara, CA 95054
 Contact: Kevin Sorenson Phone: 950-965-1300
 E-Mail: kevin@streamlineeng.com Fax: 916-965-1941

SHEET TITLE:
OVERALL
SITE PLAN

SHEET NUMBER:
A-1.1



ENLARGED SITE PLAN

1"=5'-0"



Issued For:
CCL06126
CCL06126
 3111 BENTON STREET
 SANTA CLARA, CA 95051

PREPARED FOR

 5001 Executive Parkway
 San Ramon, California 94583

Vendor:

COMPLETE
 Wireless Consulting, Inc.

AT&T SITE NO: CCL06126
 PROJECT NO: -
 DRAWN BY: C. COLSTON
 CHECKED BY: J. GRAY
 APPROVED BY: -

ISSUE STATUS			
REV	DATE	DESCRIPTION	CAD
1	11/17/23	ZD 100%	C.T.C.
0	08/21/23	ZD 90%	C.T.C.

Licensee:
PRELIMINARY:
NOT FOR
CONSTRUCTION
 KEVIN R. SORENSEN
 S1469

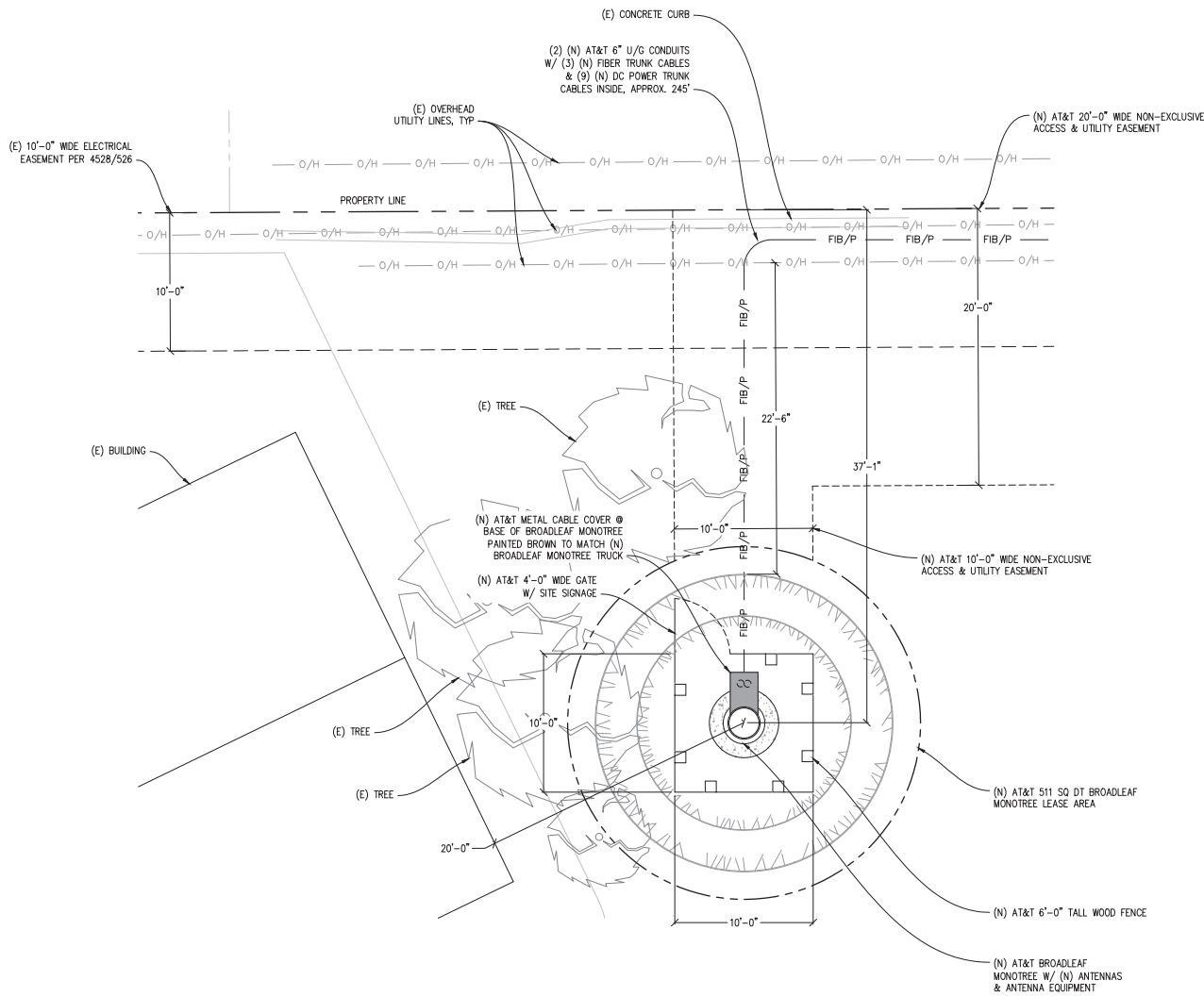
IT IS A VIOLATION OF LAW FOR ANY PERSON OTHER THAN THE ENGINEER WHOSE SEAL AND SIGNATURE ARE HEREON TO ALTER THIS DOCUMENT.

ENGINEER:

 Streamline Engineering
 8445 Santa Clara Road, Suite E, Cupertino, CA 95014
 Contact: Kevin Sorenson | Phone: 950-955-1300
 E-Mail: kevin@streamlineeng.com | Fax: 916-690-1941

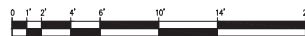
SHEET TITLE:
ENLARGED SITE PLAN

SHEET NUMBER:
A-1.2



ENLARGED BROADLEAF MONOTREE PLAN

1/4"=1'-0"



Issued For:

CCL06126
CCL06126

3111 BENTON STREET
SANTA CLARA, CA 95051

PREPARED FOR



5001 Executive Parkway
San Ramon, California 94583

Vendor:



AT&T SITE NO: CCL06126

PROJECT NO: -

DRAWN BY: C. COLSTON

CHECKED BY: J. GRAY

APPROVED BY: -

ISSUE STATUS

REV	DATE	DESCRIPTION	CAD
1	11/17/23	ZD 100%	C.T.C.
0	08/21/23	ZD 90%	C.T.C.

Licensee:

PRELIMINARY:
NOT FOR
CONSTRUCTION

KEVIN R. SORENSEN
S1469

IT IS A VIOLATION OF LAW FOR ANY PERSON
OTHER THAN THE ENGINEER WHOSE NAME IS
HEREIN SET FORTH TO SEAL OR SIGN ANY
DRAWING OR SPECIFICATION WITHOUT THE
DIRECTION OF A LICENSED PROFESSIONAL
ENGINEER, TO ALTER THIS DOCUMENT.

ENGINEER:

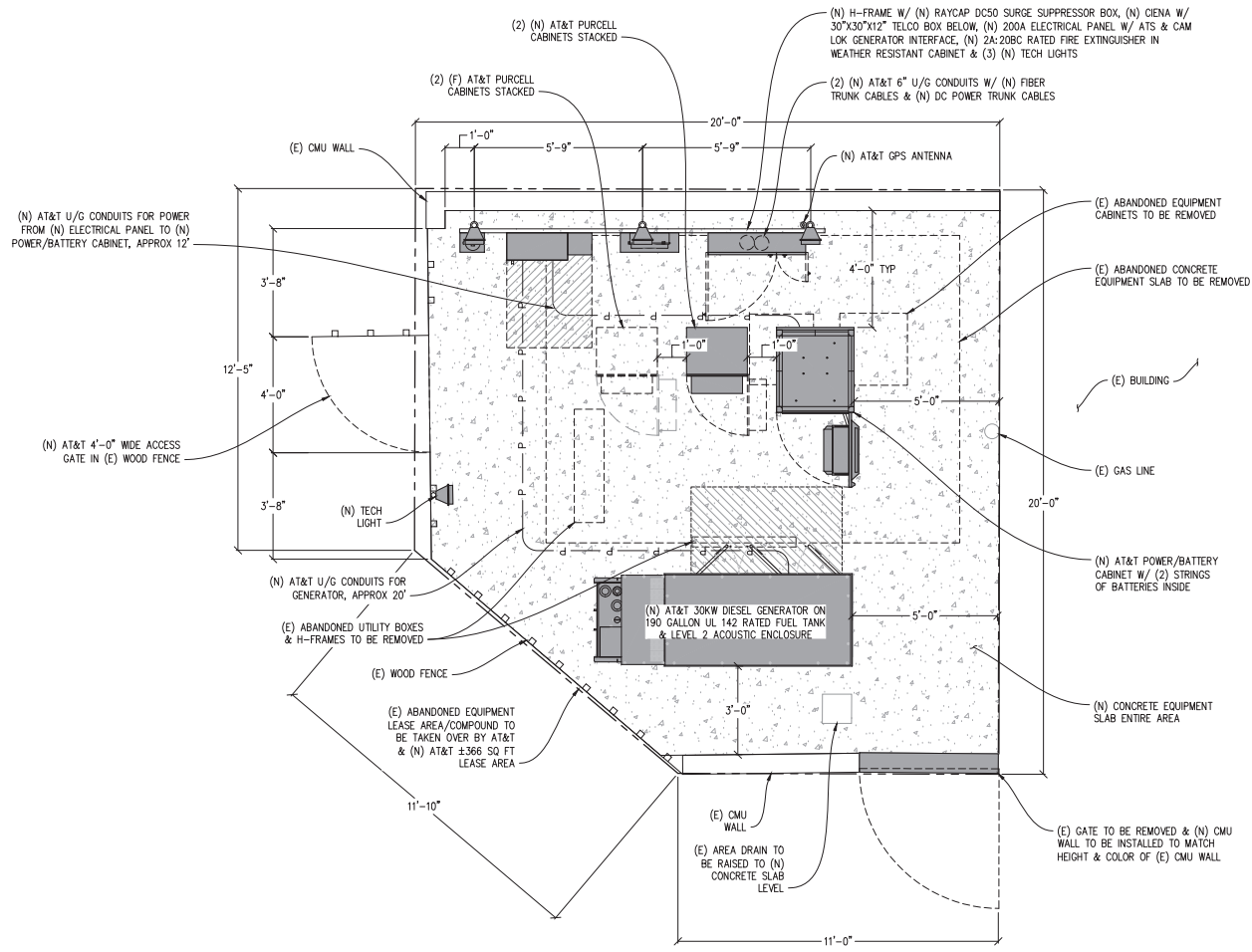


SHEET TITLE:

ENL. BROADLEAF
MONOTREE PLAN

SHEET NUMBER:

A-1.3



- NOTES:
1. ALL (E) ABANDONED U/G CONDUITS UNDER LEASE AREA TO BE REMOVED, LOCATE, REUSE & REROUTE (E) U/G CONDUITS FOR POWER & FIBER FROM OUTSIDE LEASE AREA TO INSIDE LEASE AREA.
 2. LOCATE & PROTECT (E) U/G GAS LINE THROUGH LEASE AREA.



EQUIPMENT PLAN



Issued For:
CCL06126
CCL06126
 3111 BENTON STREET
 SANTA CLARA, CA 95051



AT&T SITE NO: CCL06126

PROJECT NO: -

DRAWN BY: C. COLSTON

CHECKED BY: J. GRAY

APPROVED BY: -

ISSUE STATUS

REV	DATE	DESCRIPTION	CAD
1	11/17/23	ZD 100%	C.T.C.
0	08/21/23	ZD 90%	C.T.C.

Licensee:

**PRELIMINARY:
 NOT FOR
 CONSTRUCTION**

KEVIN R. SORENSEN
 S1469

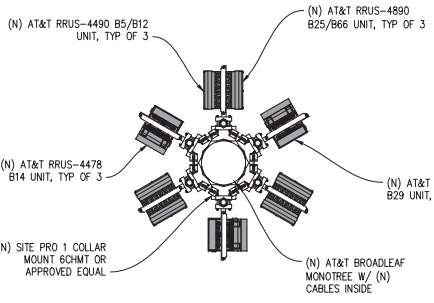
IT IS A VIOLATION OF LAW FOR ANY PERSON
 OTHER THAN THE LICENSEE TO REPRODUCE,
 COPIY, OR ALTER THIS DOCUMENT.

ENCLOSURE:

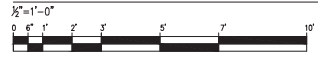
6445 Santa Clara Rd., Suite E, Santa Clara, CA 95051
 Contact: Kevin Sorenson | Phone: 950-965-1930
 E-Mail: kevin@streamlineeng.com | Fax: 916-660-1941

SHEET TITLE:
**EQUIPMENT
 PLAN**

SHEET NUMBER:
A-1.4



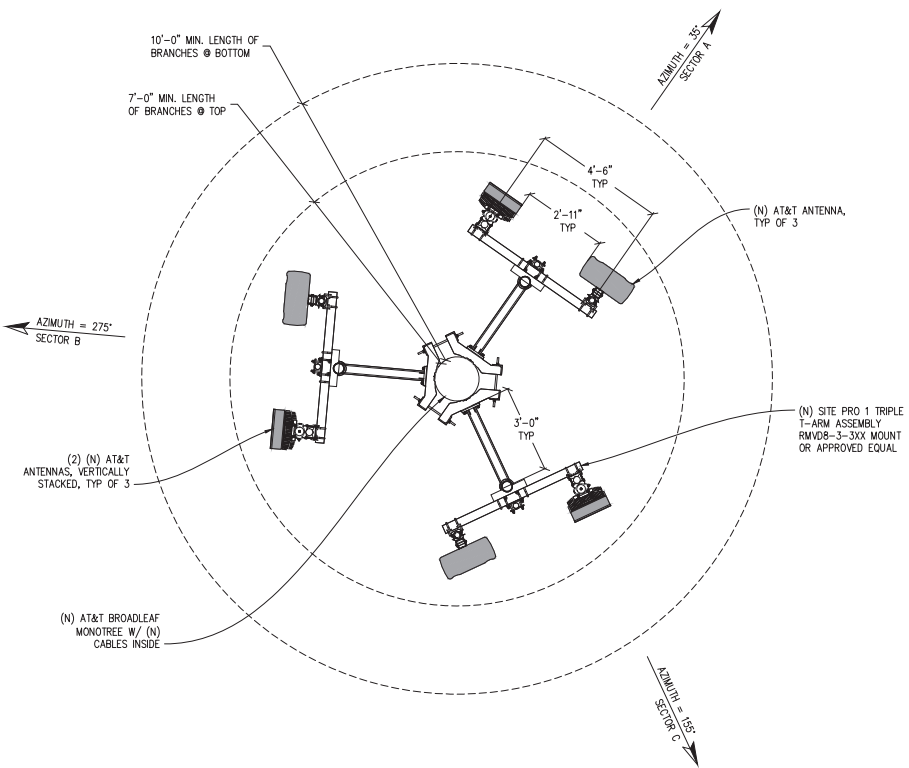
RADIO UNIT PLAN @ CL 39'-6"



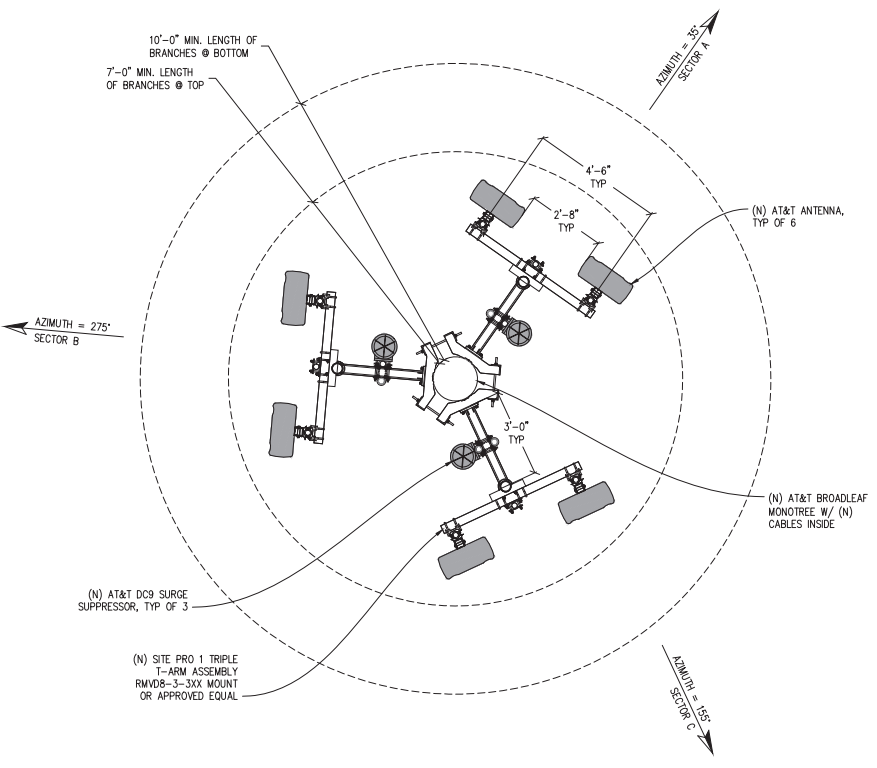
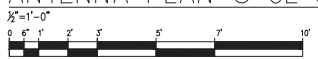
ANTENNA & CABLE SCHEDULE (PRELIMINARY & SUBJECT TO CHANGE)										
SECTOR	ANTENNA MODEL NO.	AZIMUTH	CENTERLINE	RRU NO'S & MODEL #	# OF DC POWER CABLES	# OF FIBER CABLES	LENGTH OF CABLES	SURGE SUPPRESSOR	NO. OF DIPLEXERS	NO. OF COMBINERS
A SECTOR A	A1	35°	±52'-0"	(1) 4490 B5/B12, (1) 4890 B25/B66	SHARED	SHARED	SHARED	SHARED	-	-
	A2	35°	±53'-8" & ±50'-1"	INTEGRATED	SHARED	SHARED	SHARED	SHARED	-	-
	A3	35°	±44'-0"	(1) 2012 B29	3	1	±310'	(1) DC9	-	-
	A4	35°	±44'-0"	(1) 4478 B14	SHARED	SHARED	SHARED	SHARED	-	-
B SECTOR B	B1	275°	±52'-0"	(1) 4490 B5/B12, (1) 4890 B25/B66	SHARED	SHARED	SHARED	SHARED	-	-
	B2	275°	±53'-8" & ±50'-1"	INTEGRATED	SHARED	SHARED	SHARED	SHARED	-	-
	B3	275°	±44'-0"	(1) 2012 B29	3	1	±310'	(1) DC9	-	-
	B4	275°	±44'-0"	(1) 4478 B14	SHARED	SHARED	SHARED	SHARED	-	-
C SECTOR C	C1	155°	±52'-0"	(1) 4490 B5/B12, (1) 4890 B25/B66	SHARED	SHARED	SHARED	SHARED	-	-
	C2	155°	±53'-8" & ±50'-1"	INTEGRATED	SHARED	SHARED	SHARED	SHARED	-	-
	C3	155°	±44'-0"	(1) 2012 B29	3	1	±310'	(1) DC9	-	-
	C4	155°	±44'-0"	(1) 4478 B14	SHARED	SHARED	SHARED	SHARED	-	-

RFDS DATE 10/11/23
RFDS REV 4.00

NOTE:
1. ANTENNA POSITIONS ARE LEFT TO RIGHT FROM FRONT OF ANTENNA.
2. EQUIPMENT IS PRELIMINARY & SUBJECT TO CHANGE.



ANTENNA PLAN @ CL 52'-0"



ANTENNA PLAN @ CL 44'-0"



Issued For:
CCL06126
CCL06126
3111 BENJON STREET
SANTA CLARA, CA 95051

PREPARED FOR
at&t
5001 Executive Parkway
San Ramon, California 94583

Vendor:
COMPLETE
Wireless Consulting, Inc.

AT&T SITE NO: CCL06126
PROJECT NO: -
DRAWN BY: C. COLSTON
CHECKED BY: J. GRAY
APPROVED BY: -

ISSUE STATUS			
REV	DATE	DESCRIPTION	CAD
1	11/17/23	ZD 100%	C.T.C.
0	08/21/23	ZD 90%	C.T.C.

Licensee:
**PRELIMINARY:
NOT FOR
CONSTRUCTION**
KEVIN R. SORENSEN
S1469

ENGINEER:
Streamline Engineering
4645 Santa Clara Road, Suite E, Campbell, CA 95008
Contact: Kevin Sorenson | Phone: 916-965-1930
E-Mail: kevin@streamlineeng.com | Fax: 916-965-1941

SHEET TITLE:
ANTENNA PLANS

SHEET NUMBER:
A-2.1

Issued For:
CCL06126
CCL06126
 3111 BENTON STREET
 SANTA CLARA, CA 95051

PREPARED FOR

 5001 Executive Parkway
 San Ramon, California 94583

Vendor:


AT&T SITE NO: CCL06126
 PROJECT NO: -
 DRAWN BY: C. COLSTON
 CHECKED BY: J. GRAY
 APPROVED BY: -

ISSUE STATUS			
REV	DATE	DESCRIPTION	CAD
1	11/17/23	ZD 100%	C.T.C.
0	08/21/23	ZD 90%	C.T.C.

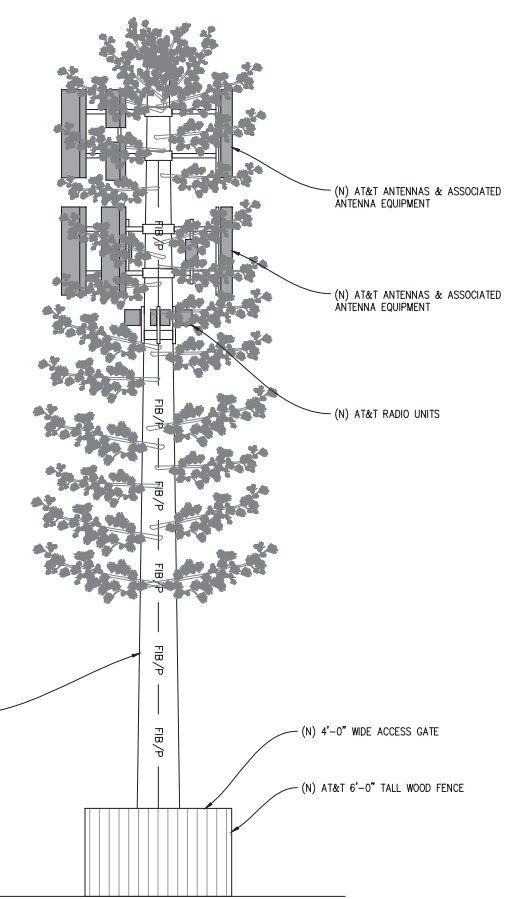
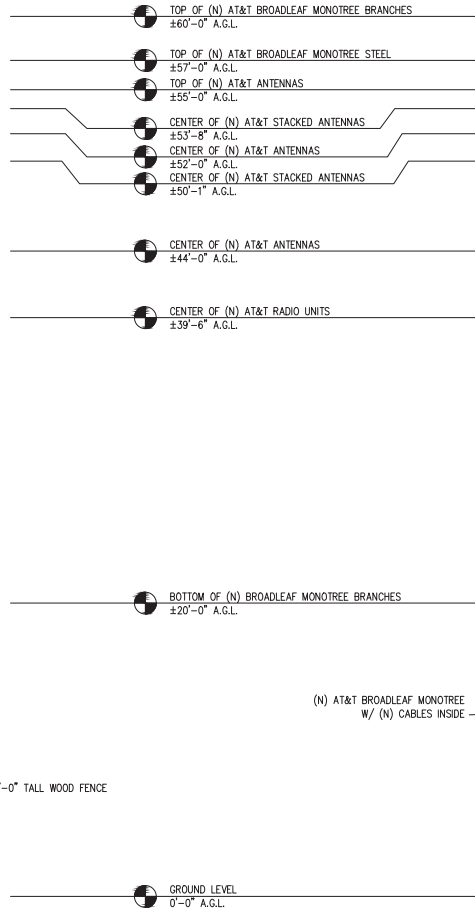
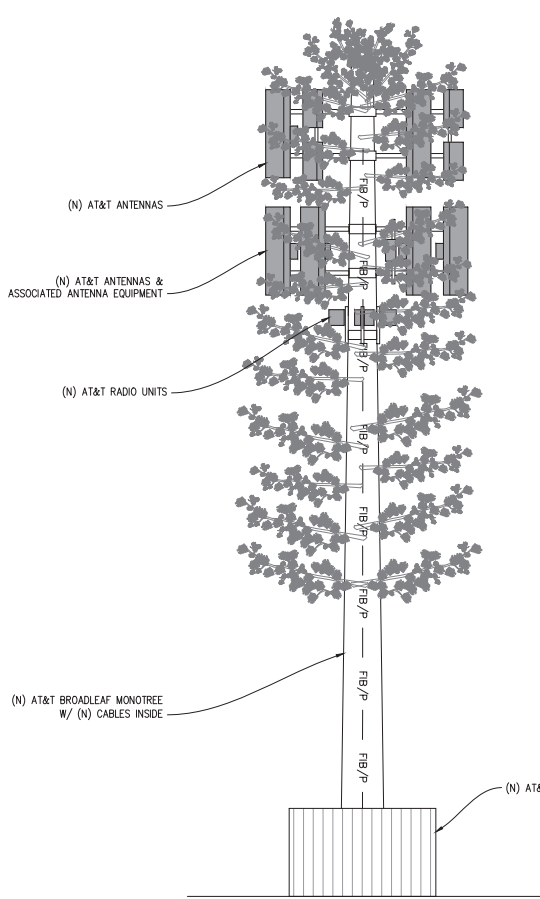
Licensee:
**PRELIMINARY:
 NOT FOR
 CONSTRUCTION**
 KEVIN R. SORENSEN
 S1469
 IT IS A VIOLATION OF LAW FOR ANY PERSON
 OTHER THAN THE LICENSEE TO REPRODUCE,
 COPY, OR ALTER THIS DOCUMENT.

ENGINEER:

 8445 Santa Clara Road, Suite E, Cupertino, CA 95014
 Contact: Kevin Sorenson | Phone: 950-965-1930
 E-Mail: kevin@streamlineeng.com | Fax: 916-690-1941

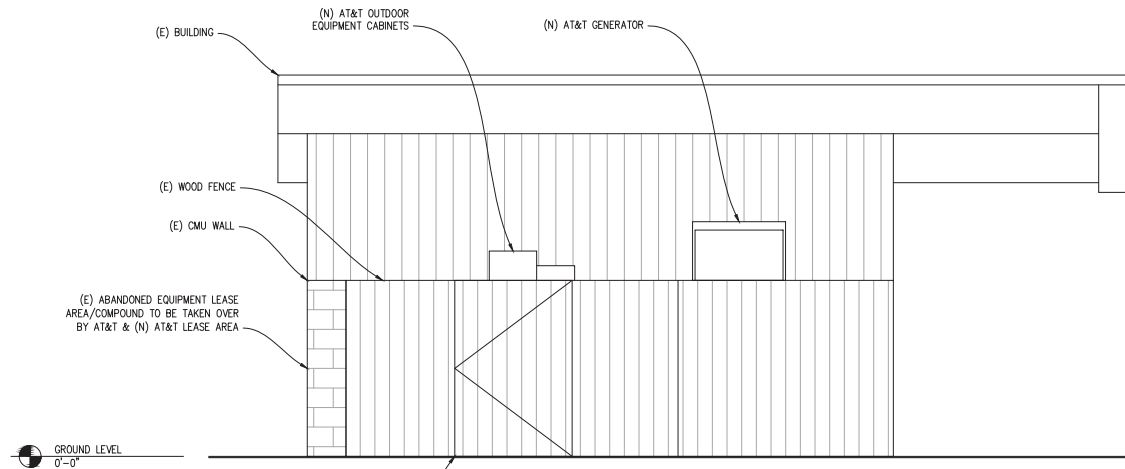
SHEET TITLE:
ELEVATIONS

SHEET NUMBER:
A-3.1



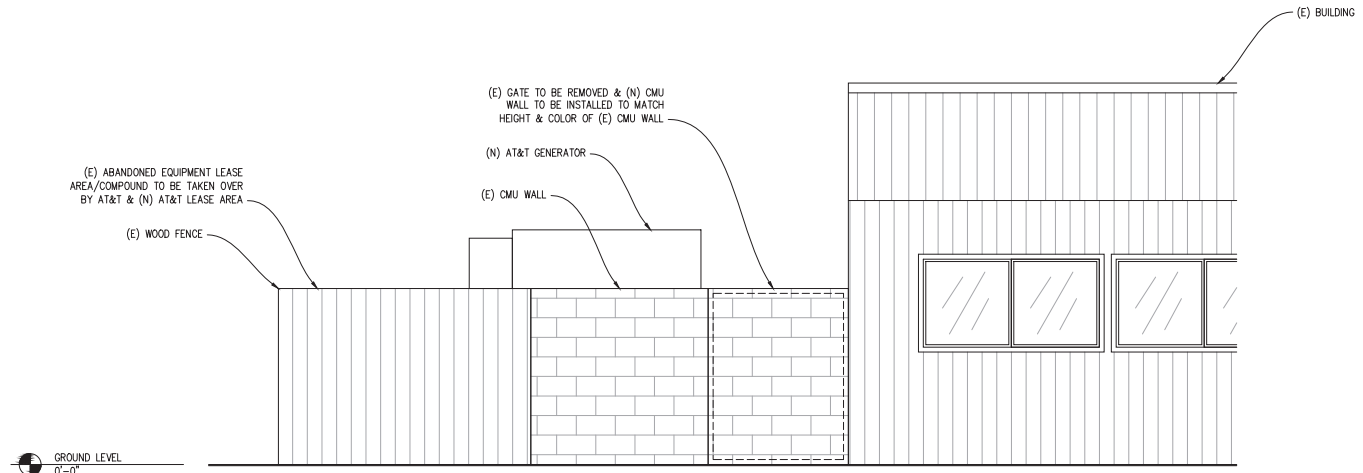
SOUTH ELEVATION
 1/4"=1'-0"


EAST ELEVATION
 1/4"=1'-0"

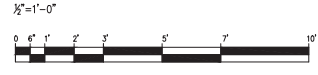



(N) AT&T 4'-0" WIDE ACCESS GATE IN (E) WOOD FENCE

WEST ELEVATION @ EQUIPMENT



SOUTH ELEVATION @ EQUIPMENT



Issued For:
CCL06126
CCL06126
 3111 BENTON STREET
 SANTA CLARA, CA 95051

PREPARED FOR

 5001 Executive Parkway
 San Ramon, California 94583

Vendor:

AT&T SITE NO: CCL06126
 PROJECT NO: -
 DRAWN BY: C. COLSTON
 CHECKED BY: J. GRAY
 APPROVED BY: -

ISSUE STATUS			
REV	DATE	DESCRIPTION	CAD
1	11/17/23	ZD 100%	C.T.C.
0	08/21/23	ZD 90%	C.T.C.

Licensee:
**PRELIMINARY:
 NOT FOR
 CONSTRUCTION**
 KEVIN R. SORENSEN
 S1469

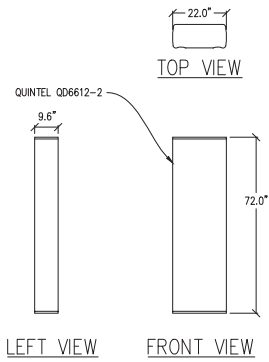
IT IS A VIOLATION OF LAW FOR ANY PERSON OTHER THAN THE LICENSEE TO REPRODUCE OR ALTER THIS DOCUMENT.

ENGINEER:

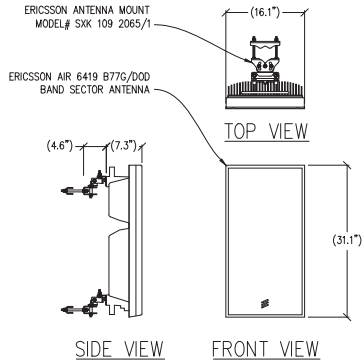
 8445 Santa Clara Road, Suite E, Cupertino, CA 95014
 Contact: Kevin Sorenson Phone: 916-960-1930
 E-Mail: kevin@streamlineeng.com Fax: 916-960-1941

SHEET TITLE:
ELEVATIONS

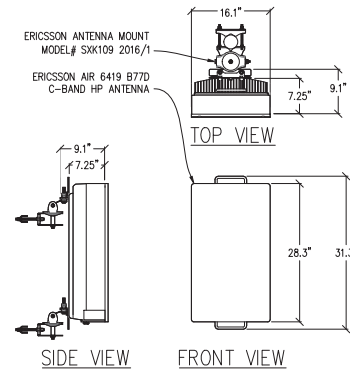
SHEET NUMBER:
A-3.2



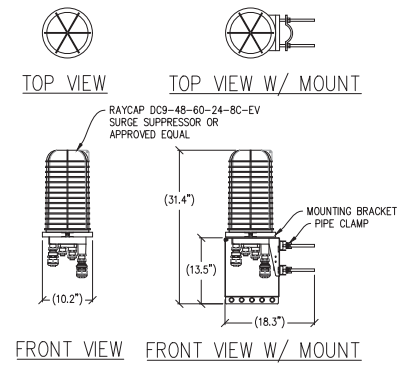
1 ANTENNA DETAIL
1"=1'-0" MAX WEIGHT: 88 LBS



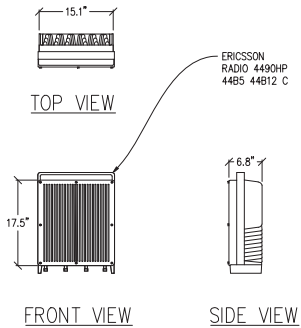
2 ANTENNA DETAIL
1"=1'-0" MAX WEIGHT: 55.4 LBS



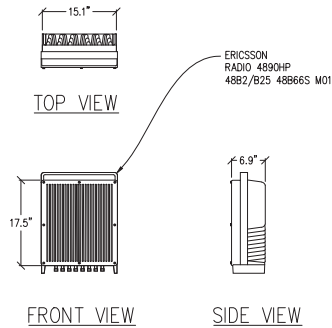
3 ANTENNA DETAIL
1"=1'-0" MAX WEIGHT: 64 LBS



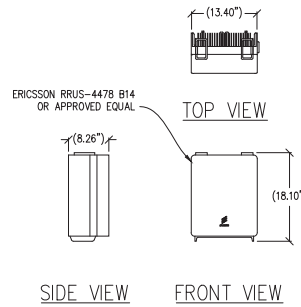
4 SURGE SUPPRESSOR DETAIL
1"=1'-0" MAX WEIGHT = 26.2 LBS



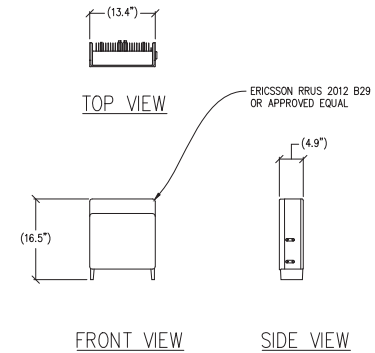
5 RADIO 4490HP DETAIL
1"=1'-0" MAX WEIGHT: 68 LBS



6 RADIO 4890HP DETAIL
1"=1'-0" MAX WEIGHT: 68 LBS



7 RRUS-4478 B14 DETAIL
1"=1'-0" MAX WEIGHT: 59.4 LBS



8 RRUS-2012 B29 DETAIL
1"=1'-0" MAX WEIGHT: 46 LBS

Issued For:
CCL06126
CCL06126
3111 BENTON STREET
SANTA CLARA, CA 95051

PREPARED FOR
 at&t
5001 Executive Parkway
San Ramon, California 94583

Vendor:
 COMPLETE
Wireless Consulting, Inc.

AT&T SITE NO: CCL06126
PROJECT NO: -
DRAWN BY: C. COLSTON
CHECKED BY: J. GRAY
APPROVED BY: -

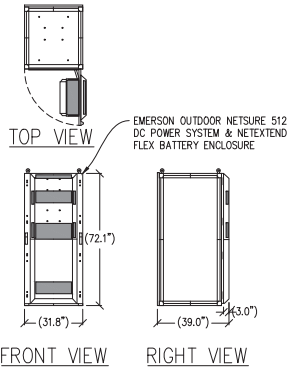
ISSUE STATUS			
REV	DATE	DESCRIPTION	CAD
1	11/17/23	ZD 100%	C.T.C.
0	08/21/23	ZD 90%	C.T.C.

Licensee:
PRELIMINARY:
NOT FOR
CONSTRUCTION
KEVIN R. SORENSEN
S1469
IT IS A VIOLATION OF LAW FOR ANY PERSON
OTHER THAN THE ENGINEER OR ARCHITECT
WHOSE NAME IS SET FORTH HEREIN TO
REPRODUCE OR TRANSMIT THIS DOCUMENT
OR ANY PART THEREOF WITHOUT THE WRITTEN
CONSENT OF THE ENGINEER OR ARCHITECT
WHOSE NAME IS SET FORTH HEREIN.

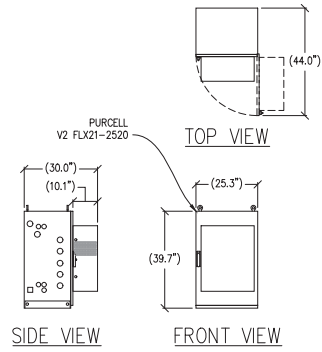
ENGINEER:
 Streamline Engineering
4645 Santa Clara Road, Suite E, Santa Clara, CA 95051
Contact: Kevin Sorenson Phone: 950-965-1100
E-Mail: kevin@streamlineeng.com Fax: 916-660-1941
REGISTERED PROFESSIONAL ENGINEER - CIVIL
STATE OF CALIFORNIA LICENSE NO. 50817
REGISTERED PROFESSIONAL ENGINEER - ELECTRICAL
STATE OF CALIFORNIA LICENSE NO. 50817

SHEET TITLE:
ANTENNA
DETAILS

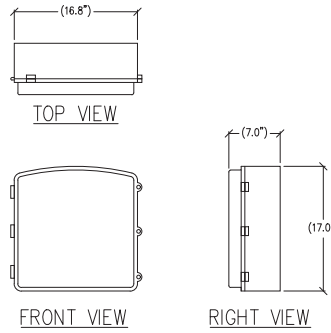
SHEET NUMBER:
A-4.1



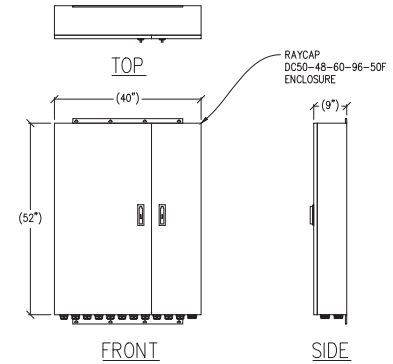
1 POWER/BATTERY CABINET DETAIL
 $\frac{3}{8}$ "=1'-0" MAX WEIGHT: 2348 LBS W/ (8) BATTERIES



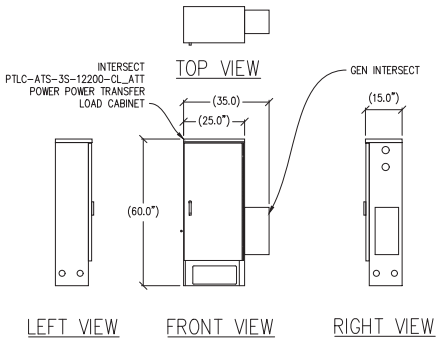
2 PURCELL DETAIL
 $\frac{1}{2}$ "=1'-0" EMPTY WEIGHT: 140 LBS



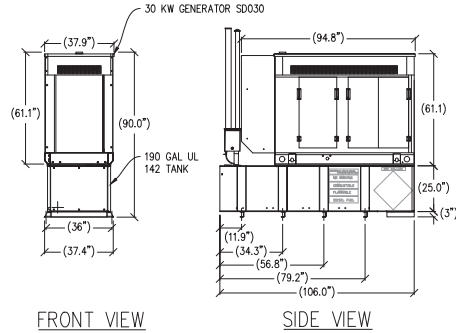
3 CN 3931 DETAIL
 $\frac{1}{2}$ "=1'-0" MAX WEIGHT: 28.6 LBS



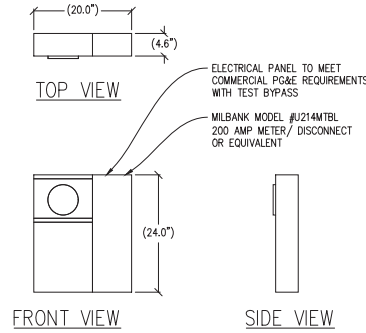
4 RAYCAP DC50 DETAIL
 $\frac{3}{4}$ "=1'-0" MAX WEIGHT: 165 LBS



5 ELECTRICAL PANEL DETAIL
 $\frac{1}{2}$ "=1'-0" MAX WEIGHT: 150 LBS



6 30KW GENERATOR DETAIL
 $\frac{3}{4}$ "=1'-0" MAX WEIGHT: 3,106 LBS



7 METER DETAIL
 1"=1'-0"

Issued For:
 CCL06126
 CCL06126
 3111 BENION STREET
 SANTA CLARA, CA 95051

PREPARED FOR

 5001 Executive Parkway
 San Ramon, California 94583

Vendor:

AT&T SITE NO: CCL06126
 PROJECT NO: -
 DRAWN BY: C. COLSTON
 CHECKED BY: J. GRAY
 APPROVED BY: -

ISSUE STATUS			
REV	DATE	DESCRIPTION	CAD
1	11/17/23	ZD 100%	C.T.C.
0	08/21/23	ZD 90%	C.T.C.

Licensee:
 PRELIMINARY:
 NOT FOR
 CONSTRUCTION
 KEVIN R. SORENSEN
 S1469

IT IS A VIOLATION OF LAW FOR ANY PERSON
 SINCE THEY ARE ACTING UNDER THE
 DIRECTION OF A LICENSED PROFESSIONAL
 ENGINEER, TO ALTER THIS DOCUMENT.

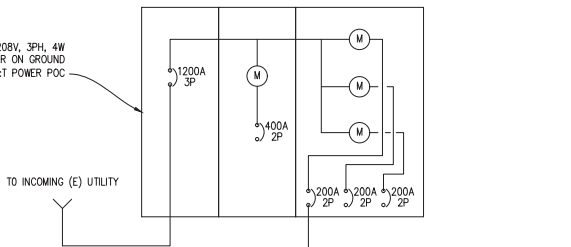
ENCLOSURE:

 8445 Santa Clara Road, Suite E, Cupertino, CA 95014
 Contact: Kevin Sorenson Phone: 950-965-1930
 E-Mail: kevin@streamlineeng.com Fax: 916-660-1941
Streamline Engineering, Inc. is an Equal Opportunity Employer. All rights reserved. © 2023 Streamline Engineering, Inc. All other trademarks are the property of their respective owners.

SHEET TITLE:
 EQUIPMENT
 DETAILS

SHEET NUMBER:
 A-4.2

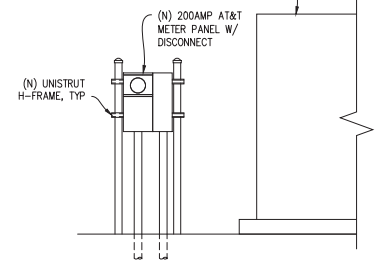
(E) 1200AMP, 120/208V, 3PH, 4W ELECTRICAL SWITCHGEAR ON GROUND BESIDE BUILDING & (N) AT&T POWER POC



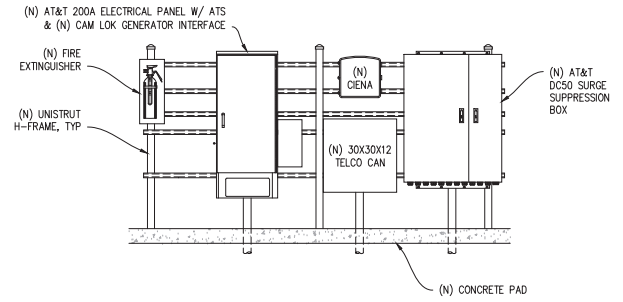
ELECTRICAL LEGEND

- (M) MECHANICAL INTERLOCK
- (M) METER
- ⤵ CIRCUIT BREAKER
- ⊥ SERVICE GROUND
- WIRED CONNECTION
- ⏏ TIMER SWITCH, WATERPROOF
- ⊙ OUTDOOR LIGHT
- ⊕ GFI OUTLET, WATERPROOF

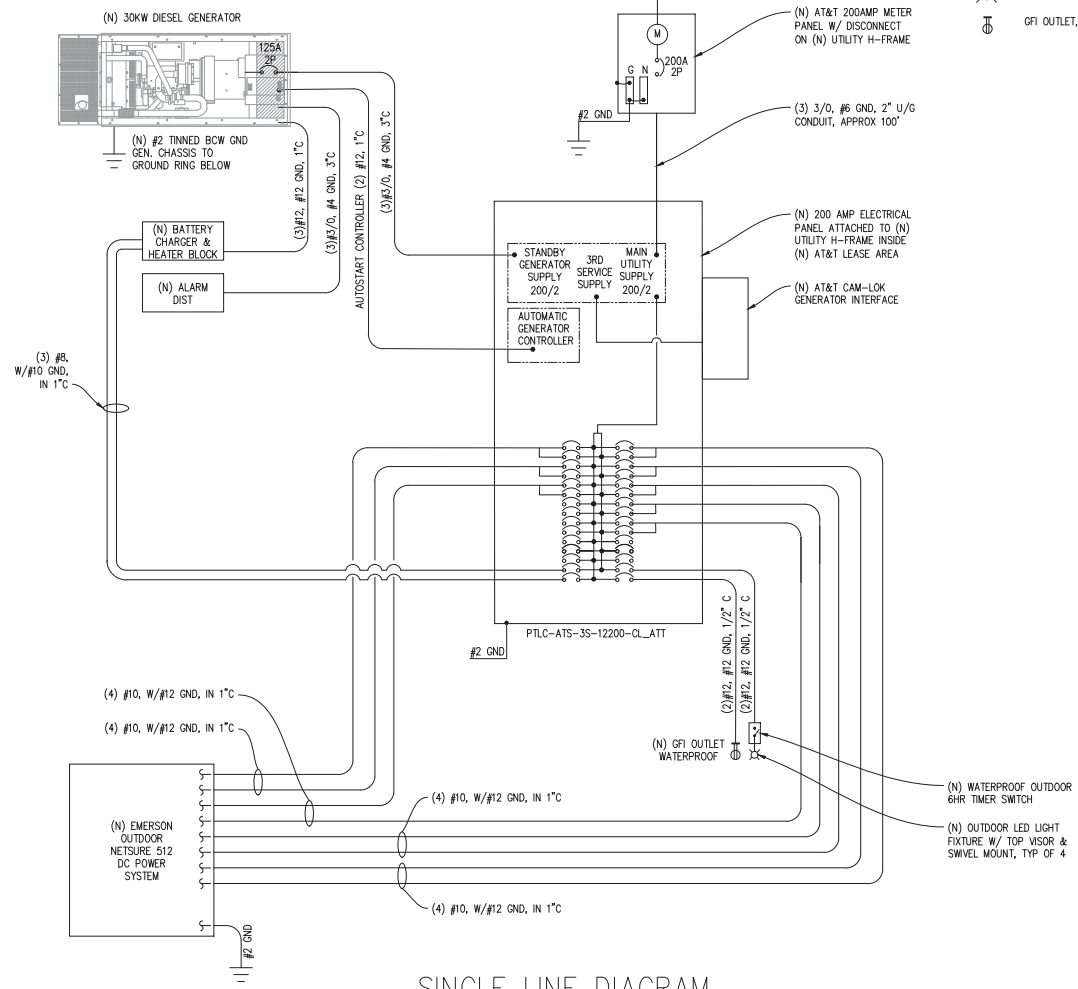
(E) 1200AMP, 120/208V, 3PH, 4W ELECTRICAL SWITCHGEAR ON GROUND BESIDE BUILDING & (N) AT&T POWER POC



1 H-FRAME ELEVATION
1/2"=1'-0" @ POWER POC



2 H-FRAME ELEVATION
1/2"=1'-0" @ EQUIPMENT



SINGLE LINE DIAGRAM

PANEL SCHEDULE

NAMEPLATE : PANEL A		SC LEVEL : 10,000		VOLTS: 120V/240V, 1Ø				
LOCATION : OUTSIDE		MOUNTING : H-FRAME		BUS AMPS: 200A				
				MAIN CB: 200A				
LOAD VA	LOAD VA	LOAD DESCRIPTION	BKR AMP / POLE	CIRCUIT NO	BKR AMP / POLE	LOAD DESCRIPTION	LOAD VA	LOAD VA
2000	2000	RECTIFIERS 1&2	30/2	1 2	30/2	RECTIFIERS 7&8	2000	2000
				3 4				
2000	2000	RECTIFIERS 3&4	30/2	5 6	30/2	RECTIFIERS 9&10	2000	2000
				7 8				
2000	2000	RECTIFIERS 5&6	30/2	9 10	30/2	RECTIFIERS 11&12	2000	2000
				11 12				
		BLANK		13 14	30/2	RECTIFIERS 13&14	2000	2000
				15 16				
				17 18	30/2	RECTIFIERS 15&16	2000	2000
				19 20				
				21 22		BLANK		
				23 24				
				25 26				
1000		(N) BATTERY CHARGER	20/1	27 28	20/1	(N) LIGHT		300
7000	6250	(N) GEN BLOCK HEATER	20/1	29 30	20/1	(N) GFI RECEPTACLE	180	10300
TOTAL VA = 33730		TOTAL AMPS = 141				PHASE TOTALS		
TOTAL KVA = 33.75								

Issued For:
CCL06126
CCL06126
3111 BENTON STREET
SANTA CLARA, CA 95051

PREPARED FOR
at&t
500 Executive Parkway
San Ramon, California 94583

Vendor:
COMPLETE Wireless Consulting, Inc.
AT&T SITE NO: CCL06126
PROJECT NO: -
DRAWN BY: C. COLSTON
CHECKED BY: J. GRAY
APPROVED BY: -

ISSUE STATUS

REV	DATE	DESCRIPTION	CAUSE
1	11/17/23	2D 100%	C.T.C
0	08/21/23	2D 90%	C.T.C

Licenses:
**PRELIMINARY:
NOT FOR
CONSTRUCTION**
KEVIN R. SORENSEN
S1469
IT IS A VIOLATION OF LAW FOR ANY PERSON UNLESS THEY ARE ACTING UNDER THE DIRECTION OF A LICENSED PROFESSIONAL ENGINEER, TO ALTER THIS DOCUMENT.

ENGINEER:
Streamline Engineering
6448 Sun Valley Blvd, Suite E, Concord, CA 94520
Contact: Kevin Sorenson Phone: 916-600-1000
E-Mail: kevin@streamlineeng.com Fax: 916-600-1841

SHEET TITLE:
ELECTRICAL PLAN

SHEET NUMBER:
E-1.1