

Objection to Issuance of Minor Use Permit for the short-term rental of up to 121 units of the Lafayette at 2333 Calle del Mundo .

I object to the issuance of this permit for the following reasons:

Issuance of permit will exacerbate the near-permanent parking condition on Calle del Mundo across from this development. This parking creates significant operational and safety burdens on nearby businesses and therefore is detrimental to the harmonious and orderly growth of the City, and endangers, jeopardizes, and creates a hazard to the public convenience, health, interest, and general welfare.

Background:

During the design and approval process of 2333 Calle del Mundo, and in a timely manner, the city was noticed that on-site parking for the 2333 Calle del Mundo development was insufficient and this would create a burden on nearby businesses. Prior to completion of the development, Calle del Mundo offered 4 lanes of travel, two eastbound and two westbound.

In January 2025, just after 2333 Calle del Mundo started accepting tenants, Calle del Mundo was restriped to three lanes of travel. One lane was eliminated and was converted to parking. This parking lane was not created on the 2333 Calle del Mundo side of the road but rather was imposed on the businesses across from 2333 Calle del Mundo (i.e. the south side). See Figure 1.

This has resulted in a near-permanent parking condition on businesses across from the 2333 Calle del Mundo development. Figure 2 shows a sign on the south side of Calle del Mundo which prohibits parking on the road from 12am to 5am. Figure 3 shows 100% saturation of illegal parking at 2:34am. Note that vehicles are blocking access to the fire hydrant and are even on Lafayette St.

Figure 4 shows that this condition does not change during the daytime.

Summary:

The net result of the near-permanent parking condition on the south side of Calle del Mundo has been:

1. Loss of ability to use Calle del Mundo for eastbound truck transport
2. Increases in crime in the area due to continuous vehicle break-ins
3. Increase in fire hazard due to blocking of access to fire hydrant
4. Increase in danger to pedestrians due to parking blocking sidewalks
5. Increase in burden to businesses as a result of the dumping of garbage by people parking their cars

Due to poor planning and an unrealistic illusion of the future of transportation, the city and the development at 2333 Calle del Mundo has created operational restrictions, hardships, and unsafe conditions in the neighborhood. The roads are to be shared, not to be ceded to those who poorly plan. Those who warned and predicted what would happen are now being made to carry the burden of the

city's mistakes. The issuance of a rental permit to the 2333 Calle del Mundo development will only exacerbate the untenable conditions along Calle del Mundo.

I therefore recommend that this permit not be issued until:

1. Calle del Mundo is returned to its re-January 2025 configuration of 2 lanes eastbound travel and 2 lanes westbound travel.
2. Aggressive parking enforcement is maintained on Calle del Mundo and Lafayette at all times of the day.
3. The 2333 Calle del Mundo development provides 100% of the parking needs of its tenants, not the minimum permitted by law.
4. Tenants at 2333 Calle del Mundo are instructed not to park on Calle del Mundo.

Ron Patrick
5191 Lafayette St. (opposite development)
Santa Clara, CA 95054

Figure 1: View Eastbound on Calle del Mundo from Lafayette. 2333 Calle del Mundo is on left.



Figure 2: Sign on South Side of Calle del Mundo



Figure 3: Illegal Parking on South Side of Calle del Mundo and Lafayette at 2:54 am



Figure 4: Parking on South Side of Calle del Mundo and Lafayette during daytime (ex. 9:41am)





NO

PARKING

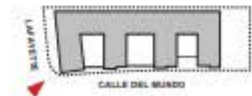
12 am to 5 am



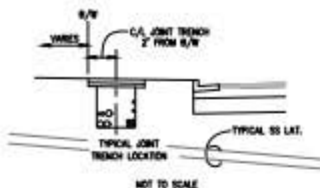


01/09/2025 07:19:47 AM





TYPICAL JOINT TRENCH SECTION

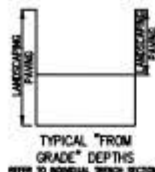


- CONTRACTOR SHALL BUILD THE UTILITY TRENCHES PER THE CITY OF SANTA CLARA'S STANDARD UG-1000.
- CONTRACTOR IS TO MAINTAIN ALL NECESSARY CLEARANCES WITH ALL OTHER EXISTING AND PROPOSED UTILITIES.
- CONTRACTOR IS MADE AWARE THAT DUE TO THE SEWER LATERAL LOCATION SOME TRENCHES MAY NEED TO SPILT OVER AND UNDER EXISTING AND PROPOSED UTILITIES.
- IF CONCRETE CAP WHEN JUNCTS ARE INSTALLED IN AN AREA THAT CAN BE PLANTED.

MINIMUM COVER & CLEARANCE CHART

UTILITY	8"	12"	18"	24"	30"	36"	MINIMUM COVER
1. GAS (SEE NOTE 3 & 4)	12"	12"	12"	12"	12"	12"	24" 30" IN STREET
2. TELEPHONE	12"	12"	12"	12"	12"	12"	24" 30" IN STREET
3. CABLE T.V.	12"	12"	12"	12"	12"	12"	24" 30" IN STREET
4. ELECT. SECONDARY	12"	12"	12"	12"	12"	12"	24" 30" IN STREET
5. ELECT. PRIMARY	12"	12"	12"	12"	12"	12"	24" 30" IN STREET

LEGEND



- 1" PRIMARY
- 2" SECONDARY
- 3" TELEPHONE
- 4" GAS
- 5" CABLE T.V.

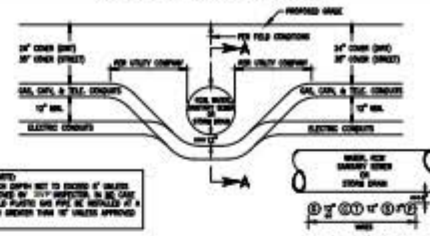
GENERAL TRENCH SECTION NOTES

- TRENCH CONFIGURATIONS SHOWN ARE FOR INSTALLATIONS WHERE EACH OCCUPANCY IS UTILIZING HIS ENTIRE SPACE ALLOCATION. OTHER CONFIGURATIONS, OR REDUCED DIMENSIONS, MAY BE USED PROVIDED THAT MINIMUM COVER AND CLEARANCES ARE MAINTAINED.
- CONTRACTOR TO MAINTAIN TRENCH DEPTHS AT ALL JOINTS. TRENCH LATERAL CROSSINGS TO MAINTAIN REQUIRED CLEARANCES BETWEEN ALL PARTICIPATING UTILITIES.
- TRENCH SECTIONS SHOWN ARE SCHEMATIC AND INDICATE AREA OF OCCUPANCY ONLY. THEY DO NOT REFLECT THE SIZE OR QUANTITY OF THE FACILITIES BEING INSTALLED AND ARE DESIGNED TO ACCOMMODATE ALL REQUIRED FACILITIES AS SHOWN ON EACH TRENCH PARTICIPATING CONSTRUCTION. DIMENSIONS REFER TO THE COMPOSITE, CONDUIT, CONDUIT/PIPE AND/OR EACH RESPECTIVE UTILITY COMPANIES CONSTRUCTION DIMENSIONS FOR THE NECESSARY CONDUIT, CABLE AND/OR PIPE BEING INSTALLED.

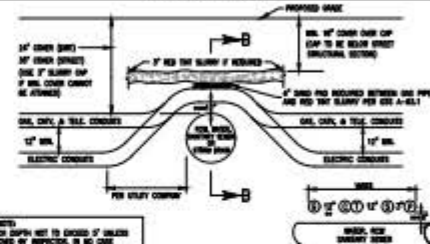
TRENCH SECTION LEGEND

- 1. EXISTING UTILITY TRENCH ALIGNMENT
- 2. EXISTING UTILITY TRENCH ALIGNMENT
- 3. PRIMARY
- 4. SECONDARY
- 5. POSE GAS
- 6. TELEPHONE
- 7. CABLE T.V.
- 8. CITY FIBER OPTIC
- 9. STREET LIGHTING
- 10. EX. UTILITY - TOTAL - TOTAL TRENCH LENGTH
- 11. EX. UTILITY - RENEW & REPLACE - RENEW & REPLACE TRENCH LENGTH

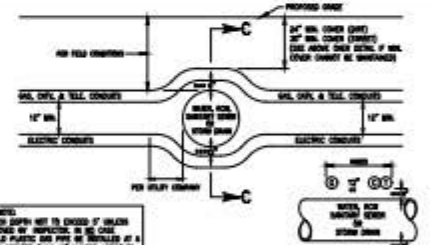
DRY UTILITY CROSSING DETAILS



JOINT TRENCH UNDER WATER, RECYCLED WATER, SANITARY SEWER OR STORM DRAIN



JOINT TRENCH OVER WATER, RECYCLED WATER, SANITARY SEWER OR STORM DRAIN



JOINT TRENCH OVER/UNDER WATER, RECYCLED WATER, SANITARY SEWER OR STORM DRAIN (PREFERRED METHOD)

- NOTE:
- SEE MINIMUM COVER & CLEARANCE CHART.
 - WITH MUTUAL AGREEMENT, WHEN 4" O.D. OR SMALLER GAS PIPE IS INSTALLED SEPARATION MAY BE REDUCED TO NOT LESS THAN 6" BETWEEN GAS AND COMMUNICATIONS (TELEPHONE & CABLE).
 - 12" MINIMUM REQUIRED BY 1117 - HORIZONTAL CLEARANCE WHERE REQUIRED BY CITY OR COUNTY. RED THE BOTTOM OF THE TRENCH WITH IMPROVED SAND. INSTALL THE CONDUIT AND/OR GAS PIPE UNDER THE FACILITY WITH THE SAME IMPROVED SAND AND MECHANICALLY COMPACT USING A VIBRATORY TAPES COMPACTOR.
 - EXISTING METHODS ARE NOT LIMITED TO THE ABOVE DETAILS. OTHER APPROVED CONFIGURATIONS MAY BE USED. CONTRACTOR TO VERIFY METHOD OF CROSSING WITH GOVERNING AGENCY AND/OR UTILITY COMPANIES AS REQUIRED PRIOR TO CONSTRUCTION.
 - JOINT TRENCH CONTRACTOR SHALL NOT ASSUME THAT ANY OF THE METHODS ABOVE WILL BE ACCEPTABLE TO POSE & THE UTILITIES. AT CONTRACTOR IS REQUIRED TO COORDINATE THE LOCAL INSPECTORS PRIOR TO INSTALLING DRY UTILITIES UNDER WATER, RECYCLED WATER, SANITARY SEWER, STORM DRAIN OR ANY OTHER FACILITY WITH ANY ISSUE RELATING TO CONDUIT LOTS, THE NUMBER OF COVERS REQUIRING EXISTING CONCRETE COPPING IS ONLY ACCEPTABLE WHEN NO OTHER SOLUTION IS POSSIBLE AND ONLY WHEN CERTAIN CRITERIA ARE MET AND ONLY WITH CITY APPROVAL.

PRELIMINARY PLANS
NOT FOR CONSTRUCTION



JOINT TRENCH INTENT

SUMMERHILL
CALLE DEL MUNDO/TASMAN
2434 CALLE DEL MUNDO
SANTA CLARA

PROJECT MANAGER
SANDRA M. MANUEL
DESIGN BY
JES
LEAD DRAFTER
JES
DATE LAST MODIFIED
11-11-18
SHEET
INT4