

OWNER
VANTAGE DATA CENTERS

ARCHITECT
HEERAN HALE HARVEY ARCHITECTS

MECHANICAL/PLUMBING ENGINEER
Southland

ELECTRICAL ENGINEER
CUPERTINO ELECTRIC

STRUCTURAL ENGINEER
PEOPLES ASSOCIATES STRUCTURAL ENGINEERS

CIVIL ENGINEER
R & G RUTH AND GOING, INC.

LANDSCAPE ARCHITECT
BEED ASSOCIATES

NO.	DESCRIPTION	DATE
000	ISSUE FOR BUILDING INTERIORS PERMIT (M BULLETIN 1)	12-15-2022
01	ISSUE FOR CORE AND SHELL BULLETIN 1	03-25-2023
02	ISSUE FOR CORE AND SHELL RECORD DRAWINGS	04-01-2023
03	ISSUE FOR BUILDING INTERIORS (M BULLETIN 1)	05-17-2023
04	ISSUE FOR BUILDING INTERIORS (M BULLETIN 1)	05-25-2023
05	ISSUE FOR CORE AND SHELL PERMIT BULLETIN 1 REV 2	06-14-2023
06	ASK FOR GEN YARD WALKWAY WALLS AND STEEL COORDINATION	06-11-2023
07	ISSUE FOR RAIN ROSE FULL ANALYSIS FOR GENERATOR YARD	06-13-2023
08	ISSUE FOR CORE AND SHELL PERMIT BULLETIN 1	04-09-2021
09	ISSUE FOR CORE AND SHELL PERMIT BULLETIN 1	12-04-2022
10	ISSUE FOR CORE AND SHELL PERMIT BULLETIN 1	12-28-2022
11	ISSUE FOR CORE AND SHELL PERMIT BULLETIN 1	12-28-2022
12	ISSUE FOR CORE AND SHELL PERMIT BULLETIN 1	12-28-2022
13	ISSUE FOR CORE AND SHELL PERMIT BULLETIN 1	05-24-2023
14	ISSUE FOR CORE AND SHELL PERMIT BULLETIN 1	05-24-2023
X	ISSUE FOR CORE AND SHELL PERMIT BULLETIN 1	
NO.	DESCRIPTION	DATE

DRAWING ISSUES

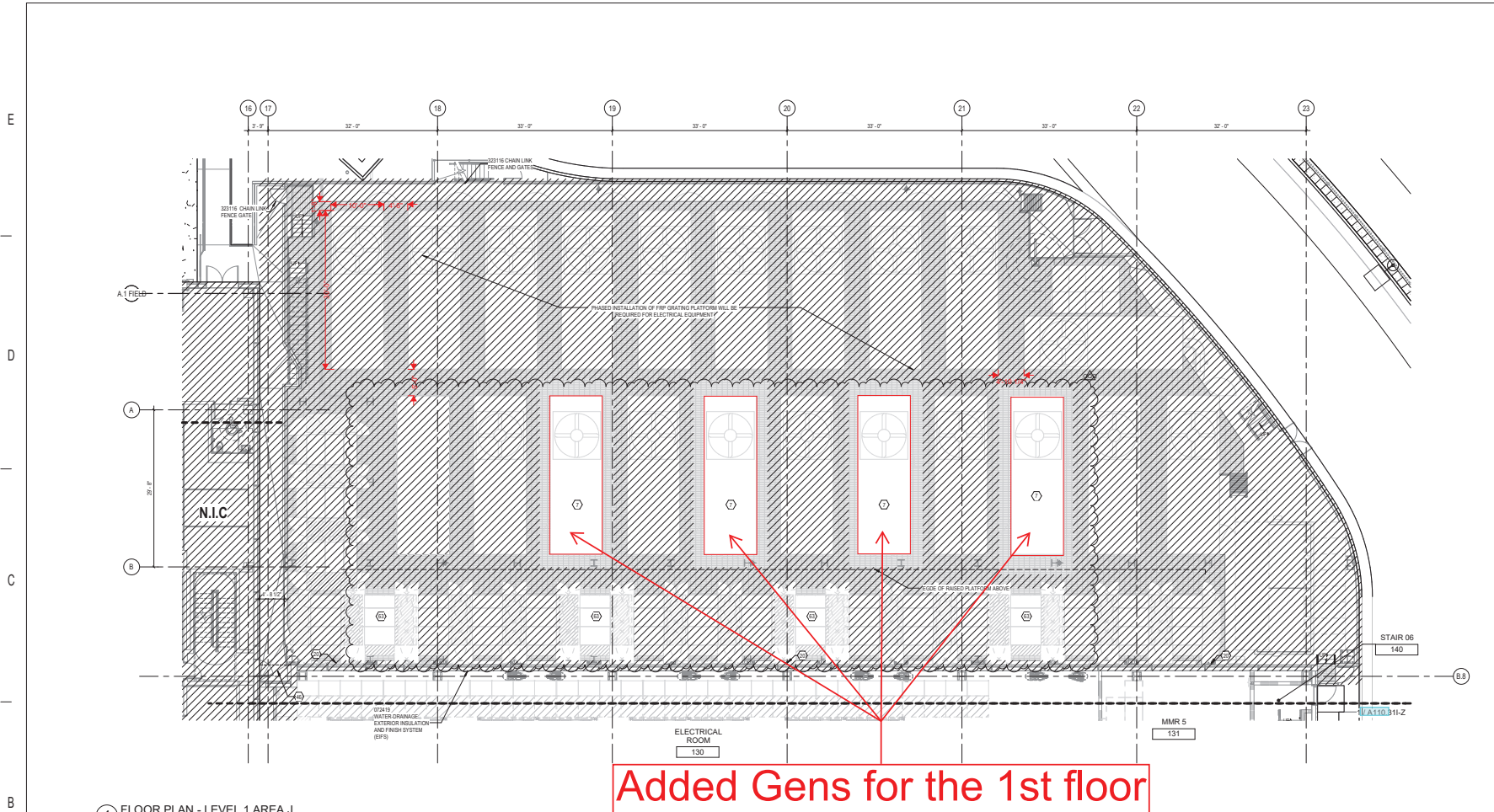
PROJECT:
VANTAGE - MCLAREN CA23
CORE & SHELL - RECORD DRAWINGS
737 MATHEW STREET
SANTA CLARA, CA

DWG. TITLE
GRADING AND DRAINAGE PLAN

PROJECT NO.: 17919H
DATE: October 17, 2019
SCALE: AS NOTED
DWG. NO.: C311

0216 SHEERAN HALE HARVEY ARCHITECTS, LTD.

BLD21-02028-REV1



1 FLOOR PLAN - LEVEL 1 AREA J
1/8" = 1'-0"

Added Gens for the 1st floor

GENERAL NOTES

- A. ALL KEYNOTES AND ANNOTATIONS APPLY TO THE CURRENT SHEET ONLY. TO SEE KEYNOTES AND ANNOTATIONS FOR AN ADJACENT SHEET, SEE THAT SHEET.
- B. PROVIDE 4" HIGH CONCRETE CURB AT ALL EXPOSED LOCATIONS WHERE 2 OR MORE CONDUITS PENETRATE THE SLAB.
- C. PLACE CONTROL JOINTS WHERE INDICATED BY "C, J" WHERE NOT INDICATED, PLACE CONTROL JOINTS AS NEEDED WHERE A WALL OR PARTITION RUNS UNINTERRUPTED FOR 20' HORIZONTALLY IN PLAN.
- D. REFER TO OVERALL PLANS FOR EXTERIOR ELEVATION TAGS.
- E. REFER TO ANE SERIES SHEETS FOR WALL, WINDOW, TIES, INCLUDING WALL PROTECTION.
- F. REFER TO SITE AND CIVIL DRAWINGS FOR SITE INFORMATION.
- G. ALL FINISHATIONS IN DATA HALLS, MAIN, IDF, AND IDF ROOMS TO BE BUILT TO MAINTAIN REQUIRED FIRE SEPARATION. REFER TO ASSESS DRAWINGS FOR EXTENTS.
- H. REFER TO MATERIAL FINISH SCHEDULE ON SHEET ADD-1 FOR MATERIAL TAG ABBREVIATIONS.

SHEET NOTES

- NOTE: NOT ALL SHEET NOTES BELOW MAY BE USED ON THIS SHEET.**
- 1. (STYPS) BOARD COLUMN ENCLOSURE.
 - 2. GENERATOR.
 - 3. LIFE SAFETY GENERATOR.
 - 4. MECHANICAL EQUIPMENT.
 - 5. (EQUIPMENT) PLATFORM FOR FUTURE GENERATOR EQUIPMENT. SEE STRUCTURAL DWGS.
 - 6. PROVIDE STICH TRAINING FOR FUTURE DOORS TYP AT ALL LEVELS. PORTION OF CRASH-RAL TO BE REMOVABLE IF NECESSARY.
 - 7. (CONSPICUOUS) AND OVERFLOW PAN/PAV. SCUPPERS. CONTRACTOR TO PROVIDE SUMP TRAYS AT DOWNSPUTS.
 - 8. (TABLE) EXT. SIGN - "EXIT" REFER TO ADD-2 FOR ADDITIONAL INFORMATION.
 - 9. (TABLE) EXT. SIGN - "EXIT (STAIR DOWN)" REFER TO ADD-2 FOR ADDITIONAL INFORMATION.
 - 10. (TABLE) EXT. SIGN - "EXIT" REFER TO ADD-2 FOR ADDITIONAL INFORMATION.
 - 11. FINISHED EXTERIOR SOFFIT ABOVE. DASHED PROVIDE INSULATION WITH 1/2" MIN. BUILDING CODE R-10. JOINT SHALL FOLLOW PROFILE OF EXTERIOR THERMAL ENVELOPE INCLUDING AT VERTICAL SOFFIT FLANGE.
 - 12. REMOVE EXISTING EPS PANEL AT NEW 8FT HIGH OPENING. PROVIDE FINISHED (OR BOARD) SURROUND AND ALL SIDES TO MATCH ADJACENT CONSTRUCTION. PROVIDE CORNER GUARD PROTECTION AT OPENING. COORDINATE OPENING WITH OPENING OF EXISTING STRUCTURAL BRACE FRAME.
 - 13. PROVIDE INTERIOR SOFFIT ABOVE. DASHED: W/SP SOFFIT FRAMING AND O/P FINISH AROUND STEEL STRUCTURE INCLUDING LINE BEAM PER INTERIM/TERMINAL BEAM LANDING.
 - 14. CONCRETE FLEECED METAL BOLTED TO PROTECT EXTERIOR FINISH. CONCRETE SHALL BE FINISHED WITH PAINT TO MATCH EXISTING METAL. SEAM AND SCREEN STRUCTURE.
 - 15. DASHED LINE INDICATES WATER STOP AT DRAIN GALLERY AND DOWNSPUT. SEE DETAIL.
 - 16. FINISHED CORE PLATE. CLAMBER CRASH RAL. PROVIDE BUCKING AT CRASHABLE TYP.
 - 17. PROVIDE CORNER GUARDS FOR A HEIGHT TO 42" AFF. EXTEND GUARD UNDER RESILIENT BASE - TYPICAL.
 - 18. (METAL) WALLS FOR POWERED CURBS. SEE STRUCTURAL DWGS.
 - 19. (DAMPER) SLEEVES TO 4H TRANSFORMER CABINET SHOWN. INSULATION ONLY COORDINATE WITH ELEC. DWGS. TYP.
 - 20. (FORMED) SHEET METAL DROP BOX WITH REMOVABLE BOTTOM PLATE. SEE ELECTRICAL FOR SIZE AND LOCATION.
 - 21. APPLY EPOXY COATING TO TRANSFORMER PLATFORM CONCRETE.
 - 22. PROVIDE CONDUIT ROUTING FOR SECURITY DEVICES.
 - 23. DEMO EXISTING CRASH RAL AND CORNER GUARDS AS NEEDED FOR NEW PARTITION PATCH AND REPAIR ANY DAMAGE.
 - 24. (FINISH) FIRE RATED 1" PLYWOOD AT WALLS OF R/O ROOM FOR EQUIPMENT SUPPORT.
 - 25. TRANSFORMER. SEE ELECTRICAL DWGS.
 - 26. PLATFORM OPENING FOR FUTURE A/C INSTALLATION. SEE ELECTRICAL FOR FINAL SIZE AND LOCATION.
 - 27. (FLOOR) PORTS TO BE INCLUDED IN SHOP DRAWINGS TO CONFIRM FINAL LOCATION. BOTTOM OF FLOOR PORT PATCH TO ALIGN WITH TOP OF PLATFORM (GRATING).
 - 28. (CHAR) LINE TYPICAL IF FROM CANOE OUTSIDE OF PLATFORM.
 - 29. (AT) INTERIOR OF FIRE RISER ROOM. PROVIDE SHEETROCK ONLY. JAP TO 8" AFF FOR WALL TYP. (M).
 - 30. PROVIDE 7" DAMPER W/DEEP HOLES AT 0" TO 0.1" IN 4" CONCRETE CURB FOR DRAINAGE. ONE DEEP HOLE TO BE LOCATED AT 1/4" POINT IN NORTHWEST CORNER OF WALKWAY.
 - 31. (WHERE) CHAR LINE FENCE IS ANCHORED TO SLAB OF CONCRETE. PROVIDE HOT DIPPED GALVANIZED 4" X 4" PLATE AS EDGE PROTECTION.
 - 32. (O/P) AND SECURITY CABINETS. SEE ELECTRICAL DRAWINGS.
 - 33. (MECHANICAL) CONTRACTOR TO PROVIDE SHEET METAL PARTITION TO CONCEAL FIBER CONDUITS.
 - 34. PROVIDE HEAVY DUTY FRAMING OF THE W/SP. GALLERY DOORS. TYP. SEE DOOR HARDWARE SCHEDULE.
 - 35. (LINE) SETTER FOR NEW PER. (H) SEE (SHEET) SOFFIT EXTENTS IN FIELD TO ENSURE DETECTION IS PROVIDED WHERE ORIGINAL SHEET METAL IS 1/4" AFF.
 - 36. CONTRACTOR TO REMOVE AND REPAIR EPS PANEL AND CONCRETE CURB AT BASE OF LIFE TOWER FOR INSTALLATION OF COLING DOOR AND MAIN DOOR. CONTRACTOR TO MAINTAIN WATERPROOFING AND CURB FLASHING AT NEW DOOR LOCATION.
 - 37. (REMOVE) FIRE RATED 1" PLYWOOD AT WALLS OF R/O ROOM FOR EQUIPMENT SUPPORT.

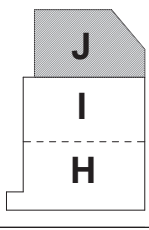
LEGEND

- SECTOR MATCHLINE
- SECTOR SHEET REFERENCE
- INDICATES SHEET NUMBER
- INDICATES DETAIL NUMBER
- GYPHUM BOARD CONTROL JOINT. BOTH SIDES OF WALL. TYP. REFER TO DETAILS & THROUGHOUT ON SHEET 6010.
- SEE SPECIFICATION SECTION 02000
- CORNER GUARD. SEE SPECIFICATION SECTION 10200
- FIRE EXTINGUISHER CAB.
- FIRE EXTINGUISHER TYP.
- FIRE EXTINGUISHER CABINET TYP.
- SEE FIRE EXTINGUISHER NOTES ON SHEET ADD-1 FOR CABINET AND EXTINGUISHER TYPES
- FLOOR GRAB
- CARD READER. REFER TO GENERAL NOTE 20 ON SHEET A610.01 FOR ADDITIONAL CODE REQUIREMENTS
- 38" RAISED ACCESS FLOOR. CONTRACTOR TO PROVIDE CONC-3 UNDER RAISED ACCESS FLOOR IN RW
- DUNNAGE PLATFORM
- EXISTING AREA PREVIOUSLY SUBMITTED FOR REVIEW AS PART OF THE CA22 PERMIT

PH P/N/C HARDWARE

- SPECIALTY LINE TYPES:**
- 1 HOUR FIRE BARRIER
 - 2 HOUR FIRE BARRIER
 - 3 HOUR FIRE BARRIER
 - LEAK PROTECTION PERIMETER

KEY PLAN



OWNER
VANTAGE DATA CENTERS
 130 East Randolph, Suite 3100
 Chicago, IL 60601
 408.907.9225
 www.vantage.com
 CHICAGO | LONDON

ARCHITECT
SHEEHAN HANBLE HARTRAY ARCHITECTS
 130 East Randolph, Suite 3100
 Chicago, IL 60601
 408.907.9225
 www.vantage.com
 CHICAGO | LONDON

MECHANICAL/ELECTRICAL/PLUMBING ENGINEER
Southland
 Southland Industries
 22340 Dresden Street, Suite 177
 Dulles, VA 20196
 Office: 703.834.5570
 Fax: 703.834.5572

STRUCTURAL ENGINEER
PEOPLES ASSOCIATES STRUCTURAL ENGINEERS
 408.907.9225
 San Jose, California
 Pleasanton, California

CIVIL ENGINEER
R+G RUTH AND GOING, INC.
 2216 THE ALABAMA SANTA LARA, CA 95050
 (925) 239-3900 FAX (925) 239-0150

LANDSCAPE ARCHITECT
REED ASSOCIATES
 1000 AVENUE OF THE STARS
 FORT MYERS, FLORIDA 33902

NO.	DESCRIPTION	DATE
000	ISSUE FOR BUILDING INTERIORS PERMIT - DM1	12-15-2021
001	ISSUE FOR BUILDING INTERIORS PERMIT - DM1	07-23-2021
002	ISSUE FOR HALL BUILDING INTERIORS DEVELOPMENT	07-27-2020

DRAWING ISSUES

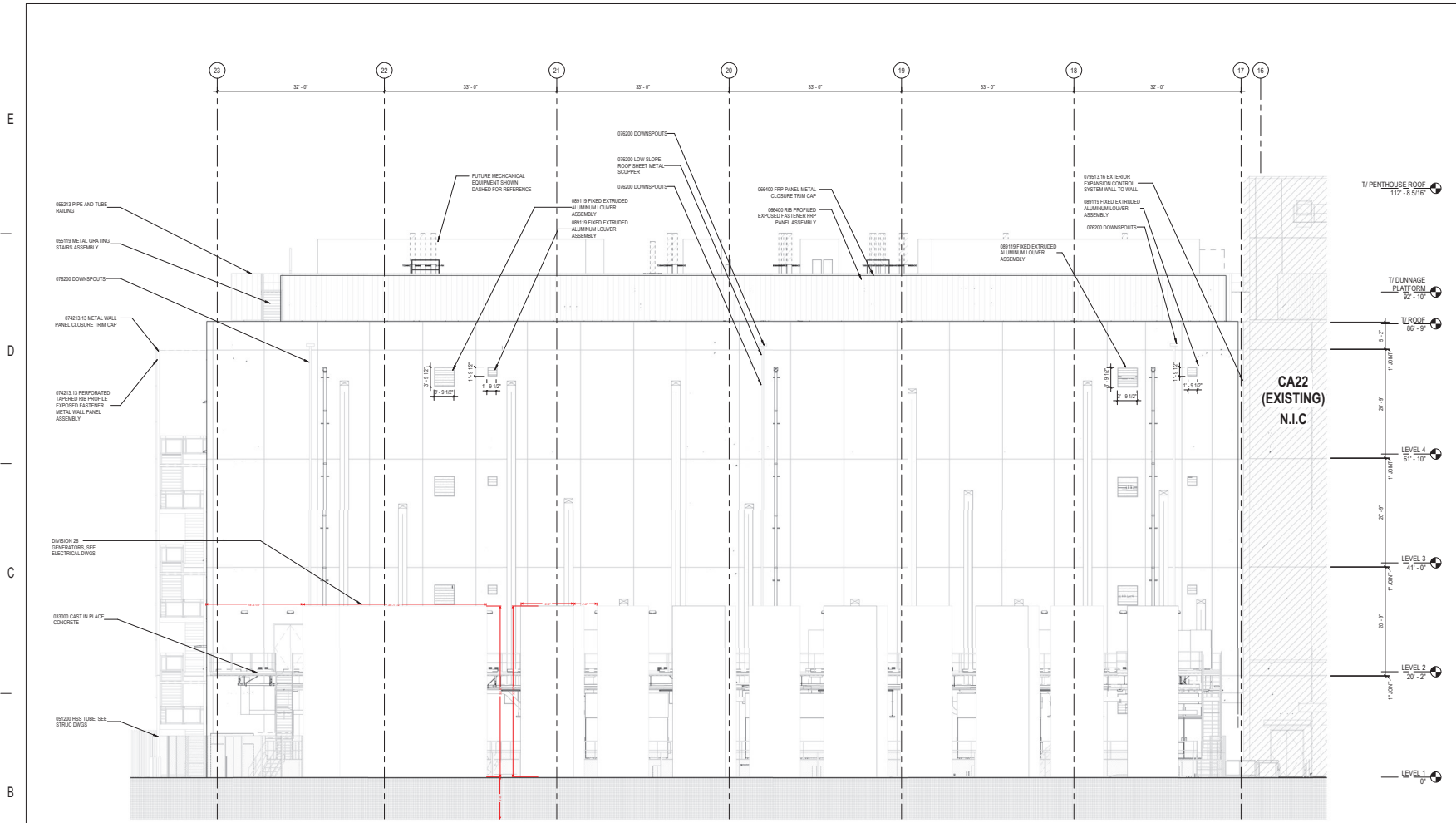
CREATED & REVIEWED
 NEIL SHEEHAN
 C-32243
 RN 01/1/20
 01/02
 STATE OF CALIFORNIA
 SEAL OF ARCHITECT

PROJECT:
VANTAGE - MCLAREN CA23
BUILDING INTERIORS DM1
 737 MATHEW STREET
 SANTA CLARA, CA 95050

DWG. TITLE
FLOOR PLAN LEVEL 1 AREA J

PROJECT NO: Project Number
DWG. NO.: A110.31-J-Z
 DATE: 12/15/2022
 AS NOTED

© 2021 SHEEHAN HANBLE HARTRAY ARCHITECTS, LTD.



1 OVERALL NORTH ELEVATION
1/8" = 1'-0"

GENERAL NOTES	SHEET NOTES	LEGEND	KEY PLAN
	NOTE: NOT ALL SHEET NOTES BELOW MAY BE USED ON THIS SHEET		<div data-bbox="1480 1274 1638 1356" style="border: 1px solid red; padding: 2px; text-align: center;"> REVIEWED FOR CODE COMPLIANCE <i>y. hugh</i> 12/19/2022 CITY OF SANTA CLARA BUILDING DIVISION </div> <div data-bbox="1491 1372 1627 1421" style="border: 1px solid blue; padding: 2px; text-align: center;"> Building Permit No. BLD21-62626 </div> <div data-bbox="1669 1282 1806 1485" style="border: 1px solid black; padding: 5px; text-align: center;"> <div style="font-size: 2em; font-weight: bold; margin-bottom: 5px;">J</div> <div style="font-size: 2em; font-weight: bold; margin-bottom: 5px;">I</div> <div style="font-size: 2em; font-weight: bold;">H</div> </div>

OWNER
VANTAGE DATA CENTERS
 130 East Randolph, Suite 3100
 Chicago, IL 60601
 Tel: 312.633.2900
 CHICAGO | LONDON

ARCHITECT
SHEEHAN NAGLE HARTRAY ARCHITECTS
 406-927-9220
 1302 North 7th Street, Suite 177
 Dulles, VA 20156
 Office: 703.834.5570
 Fax: 703.834.5572

MECHANICAL/ELECTRICAL/PLUMBING ENGINEER
Southland Industries
 22340 Dresden Street, Suite 177
 Dulles, VA 20156
 Office: 703.834.5570
 Fax: 703.834.5572

STRUCTURAL ENGINEER
CUPERTINO ELECTRIC
 1132 NORTH 7TH STREET
 SAN JOSE, CA 95112
 (408) 958-8000
 C-10 LIC. NO. 174837

PEOPLES ASSOCIATES STRUCTURAL ENGINEERS
 406-927-9220
 www.aae.com
 San Jose, California Pleasanton, California

CIVIL ENGINEER
RUTH AND GOING, INC.
 2216 THE ALAMITOS SANTA CLARA, CA 95050
 (408) 238-7400 FAX: (408) 238-0100

LANDSCAPE ARCHITECT
REED ASSOCIATES
 1500 AVENUE 100, SUITE 100
 PLEASANTON, CA 94566

NO.	ISSUE FOR BUILDING INTERIORS PERMIT	DATE
01	ISSUE FOR BUILDING INTERIORS PERMIT	07-23-2021
02	BUILDING INTERIORS - 30% CD	11-22-2020
03	DESCRIPTION	DATE

DRAWING ISSUES

CREATED & REVIEWED
 NEIL SHEEHAN
 C-32243
 RN: 01/21/20
 STATE OF CALIFORNIA
Neil Sheehan

PROJECT:
VANTAGE - MCLAREN CA23
BUILDING INTERIORS DM2
737 MATHEW STREET
SANTA CLARA, CA 95050

DWG. TITLE
ENLARGED EXTERIOR ELEVATIONS

PROJECT NO.: Project Number
 DATE: 07/23/2021
DWG. NO.: **A220.31-Y**

SCALE:
 AS NOTED

© 2021 SHEEHAN NAGLE HARTRAY ARCHITECTS, LLP

6 | 1 | 5 | 1 | 4 | 1 | 3 | 1 | 2 | 1 | 1