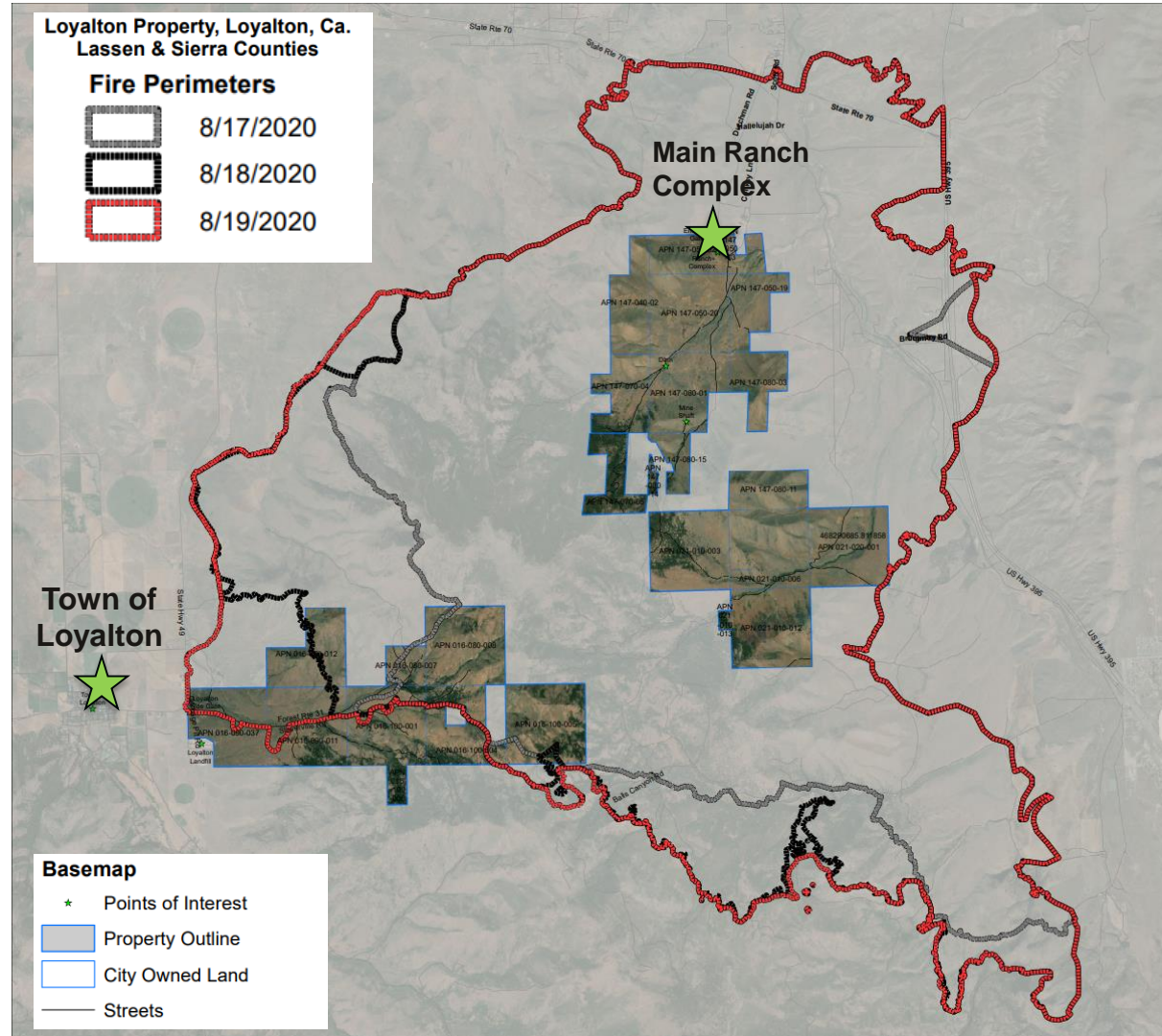


# Attachment 2

## Loyalton Wildfire

- Background on Loyalton Ranch Property: In 1977, the City purchased approximately 10,000 acres of undeveloped land located within Lassen, Sierra and Plumas Counties.
- Cause of Fire: Lightning
- Burned over 46,000 acres.
- More than 90% of the City's Loyalton Ranch Property affected by the fire.



## Attachment 2

### Loyalton Property (after Loyalton Fire)

After Loyalton Fire



Before Loyalton Fire



## Attachment 2

### Ranch House (after Loyalton Fire)



Before Loyalton Fire

## Attachment 2

### Foreman's Cabin (after Loyalton Fire)



## Attachment 2

### **Loyalton Property (after Loyalton Fire)**

