

Council Meeting



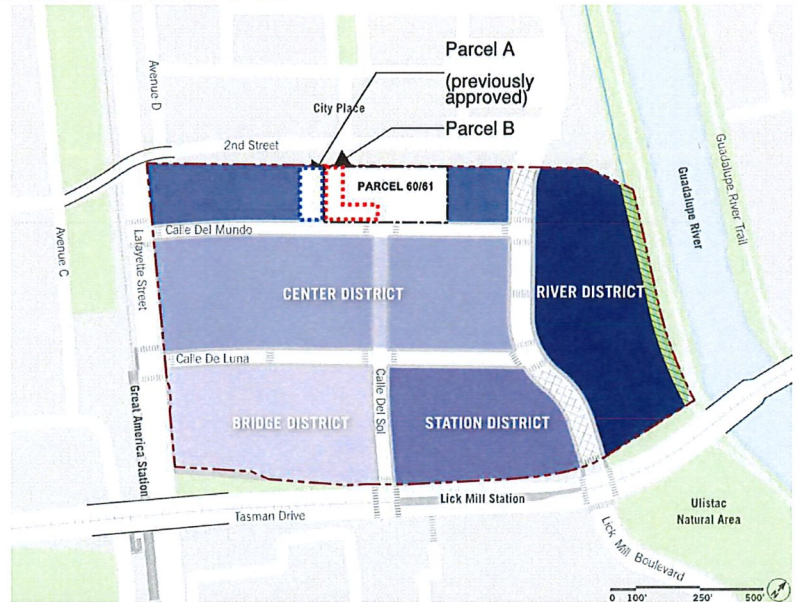
23-126. Approval of the Schematic Design – Master Plan for the New Public Mini Park at 2263 Calle Del Mundo (Ensemble Investments/ Rethink Development)

February 21, 2023

Background — Park Location

Tasman East Specific Plan (TESP)

- Adopted November 13, 2018
- Revised December 2020
- 46 acre land use plan
- Urban Design Standards
- High-density, transit-oriented neighborhood
- Parks & Active Recreational Amenities
- Hill District: provides a 0.85-acre mini park contributed from two adjacent developments' parcels



Community Input & Commission Review

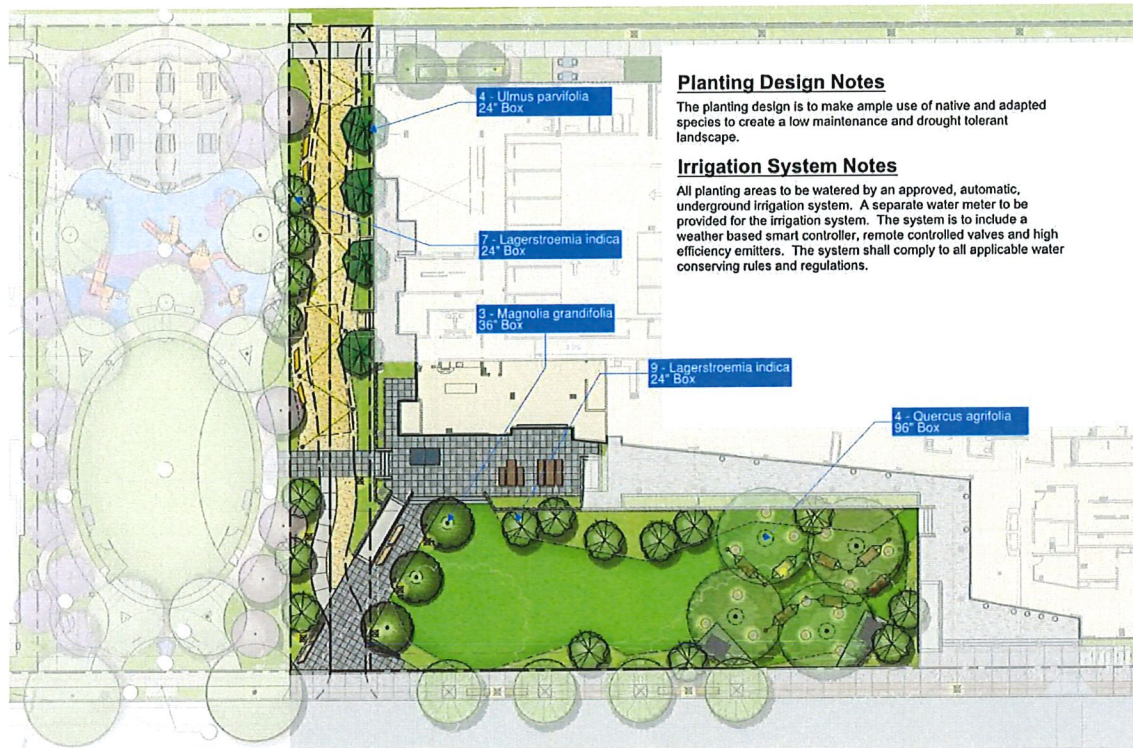
- August 16, 2022 – Parks & Recreation Commission Meeting #1
- September 17- 18, 2022 – Art & Wine Festival
- August 31, 2022 – September 20, 2022 – Community Survey
- January 17, 2023 –Parks & Recreation Commission #2
 - Recommendation for Approval
- Council Consideration of Approval February 21, 2023



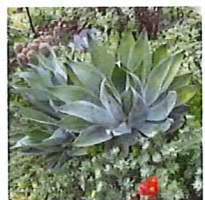
Parcel B Park Amenities



Landscape Plan

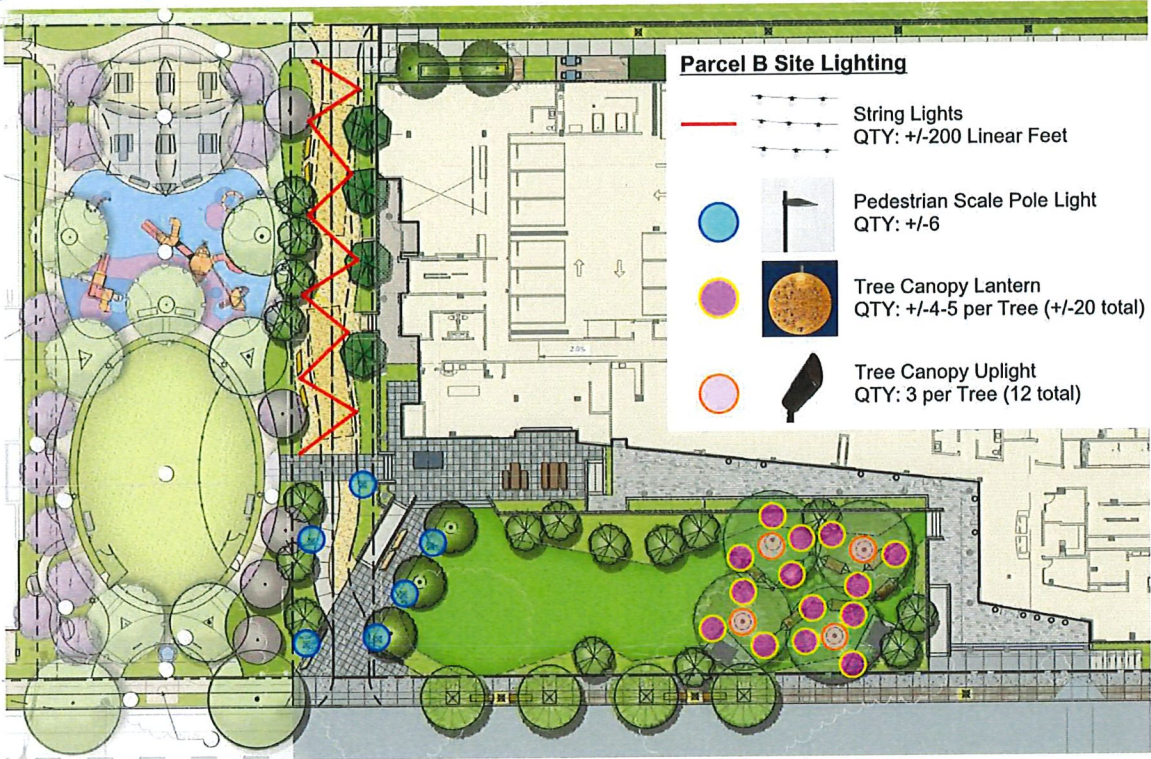


Landscape Plan – Planting Imagery

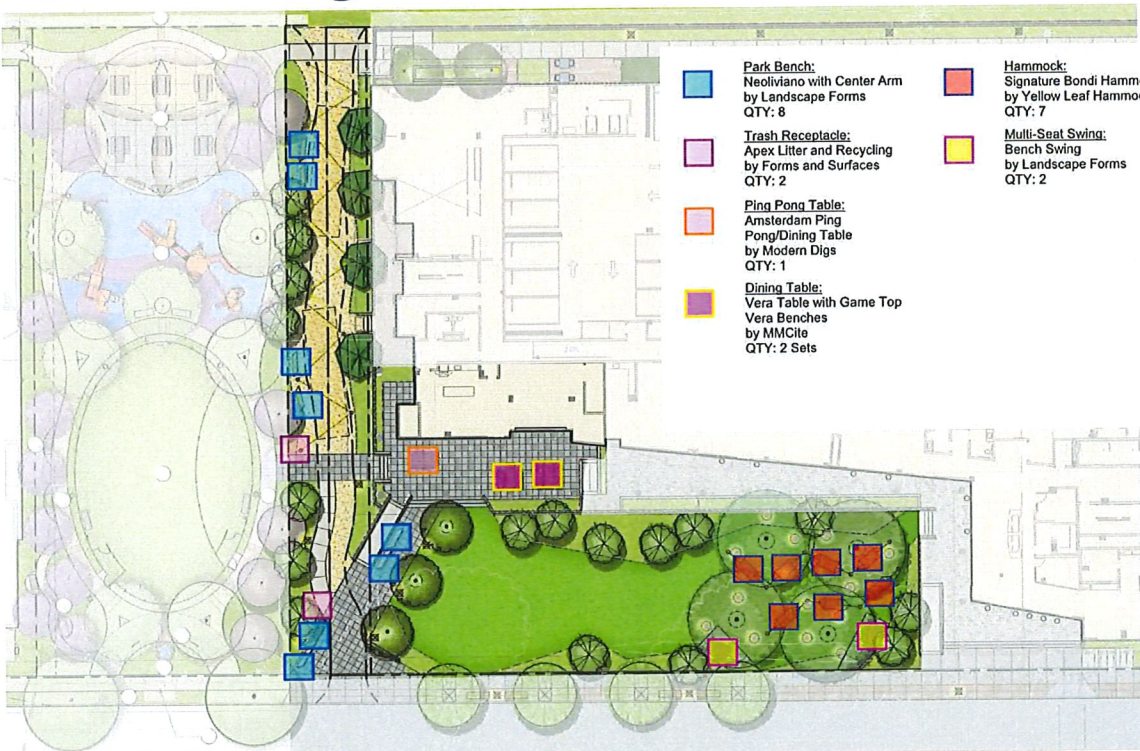


Shrub Planting Character Imagery

Lighting Plan



Site Furnishings Plan



Parcel B Park Furniture & Amenities



Multi-Seat Swing



Park Bench - to match Parcel A



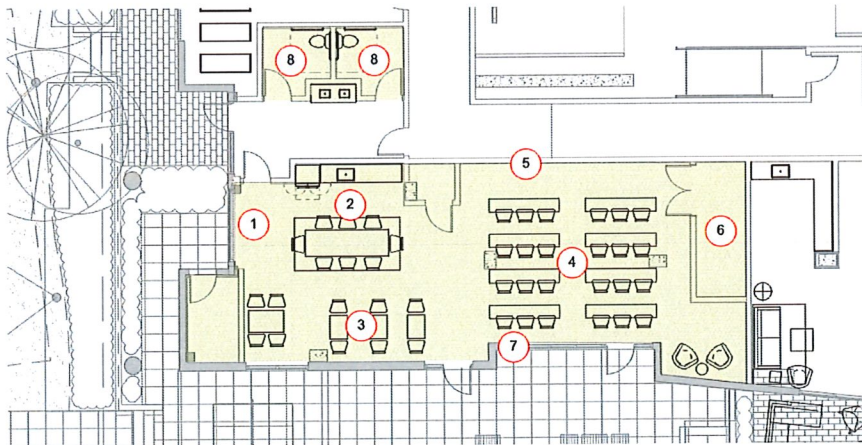
Trash/Recycle Receptacle - to match Parcel A



Park Table with Game Top

9

Community Room – Floor Plan



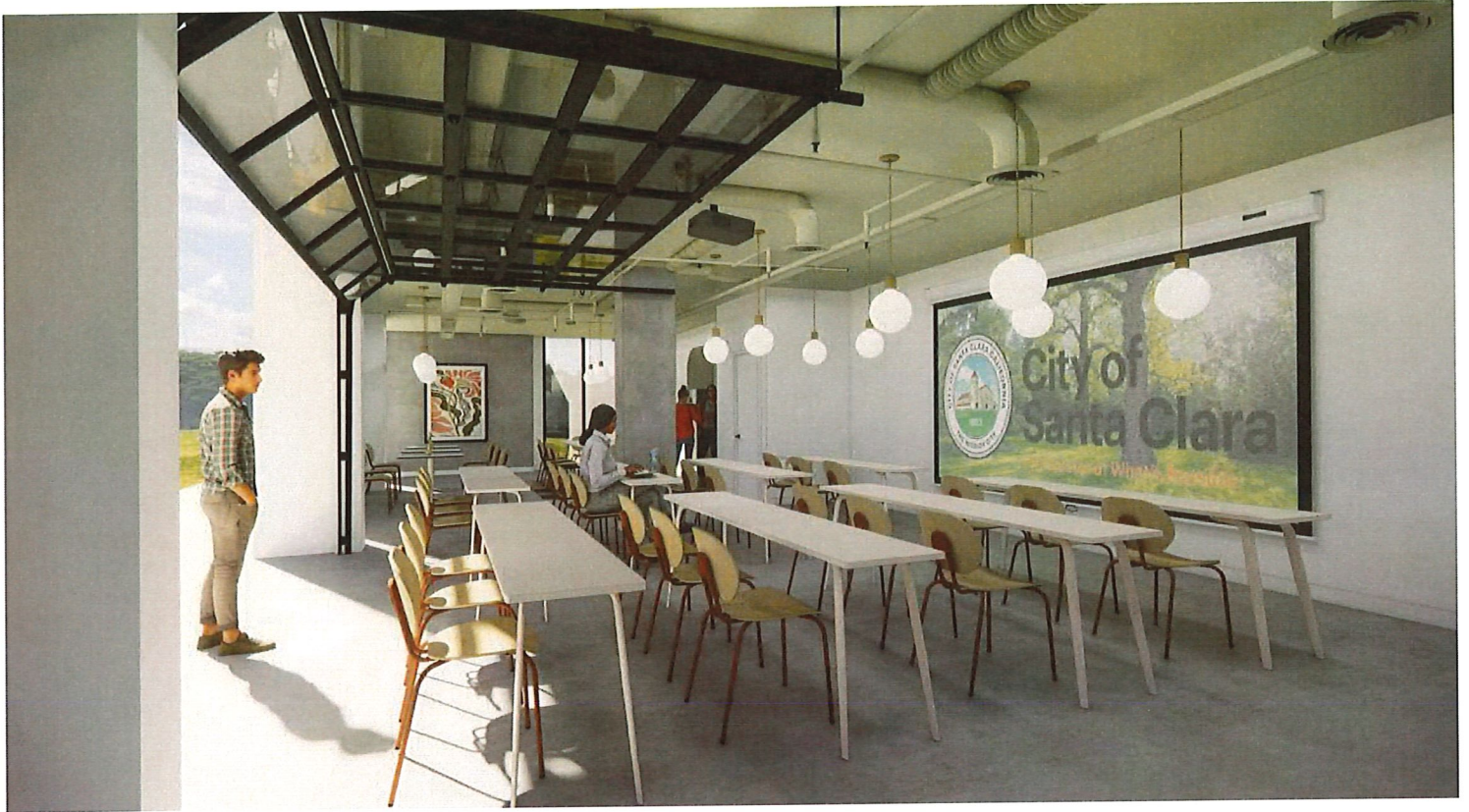
PARTIAL LEVEL 1 PLAN - N.T.S.

KEYNOTES

- 1. Park community room
- 2. Kitchen with central island
- 3. Flex seating
- 4. Lecture space
- 5. Projection Screen
- 6. Storage
- 7. Operable garage door
- 8. Restroom

10









17



18



Council Consideration

- That Council approve the proposed Schematic Design - Master Plan for the New Public Mini Park at 2263 Calle Del Mundo.

