

Tasman East
5150 Calle Del Sol & 2350 Calle De Luna
Mini Park Design Follow-Up Presentation



*Colors are for illustrative purposes only and are subject to further development/material research

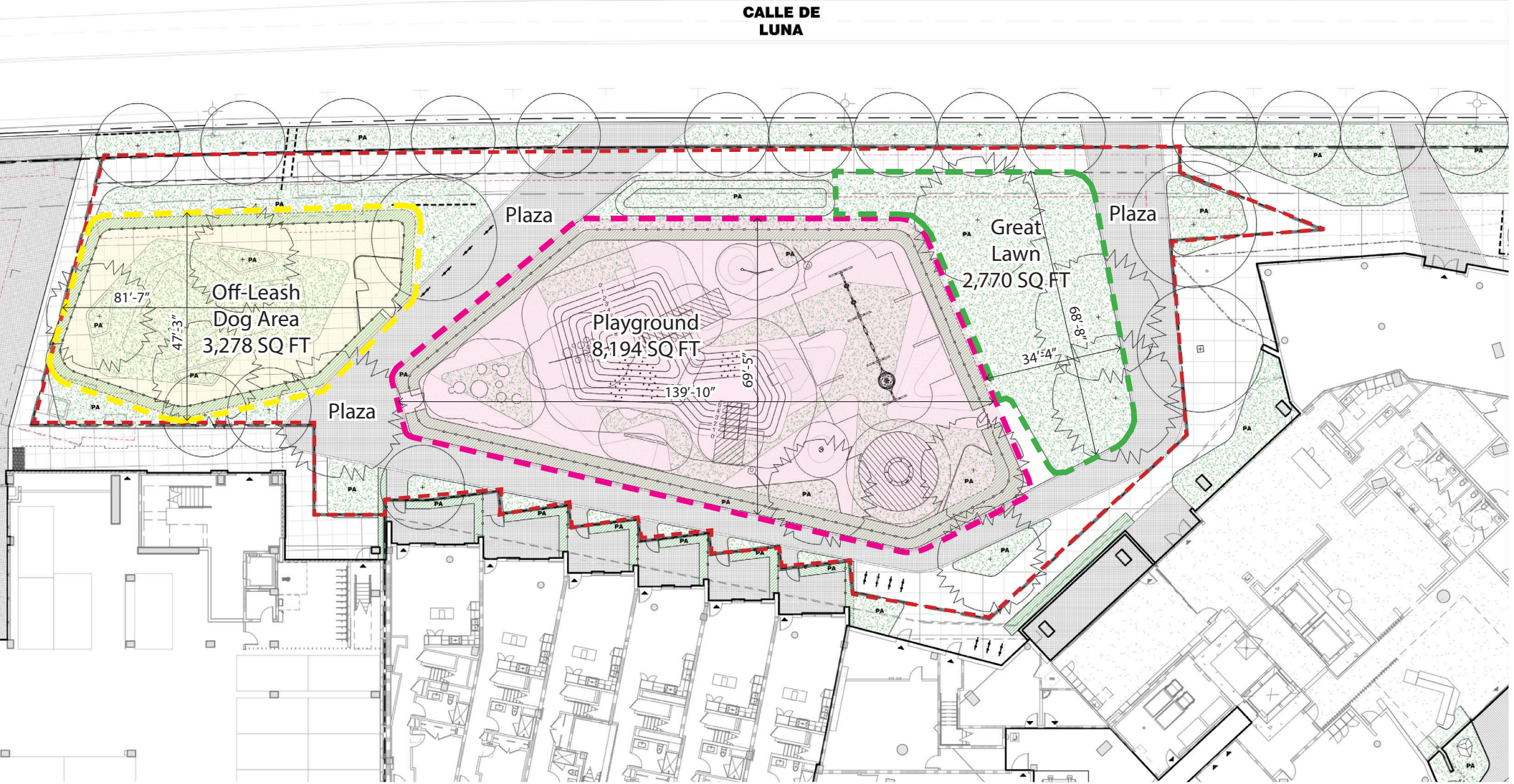
March 8, 2022

Site Design



Mini Park Program Diagram

----- Total Mini Park Area = 0.5

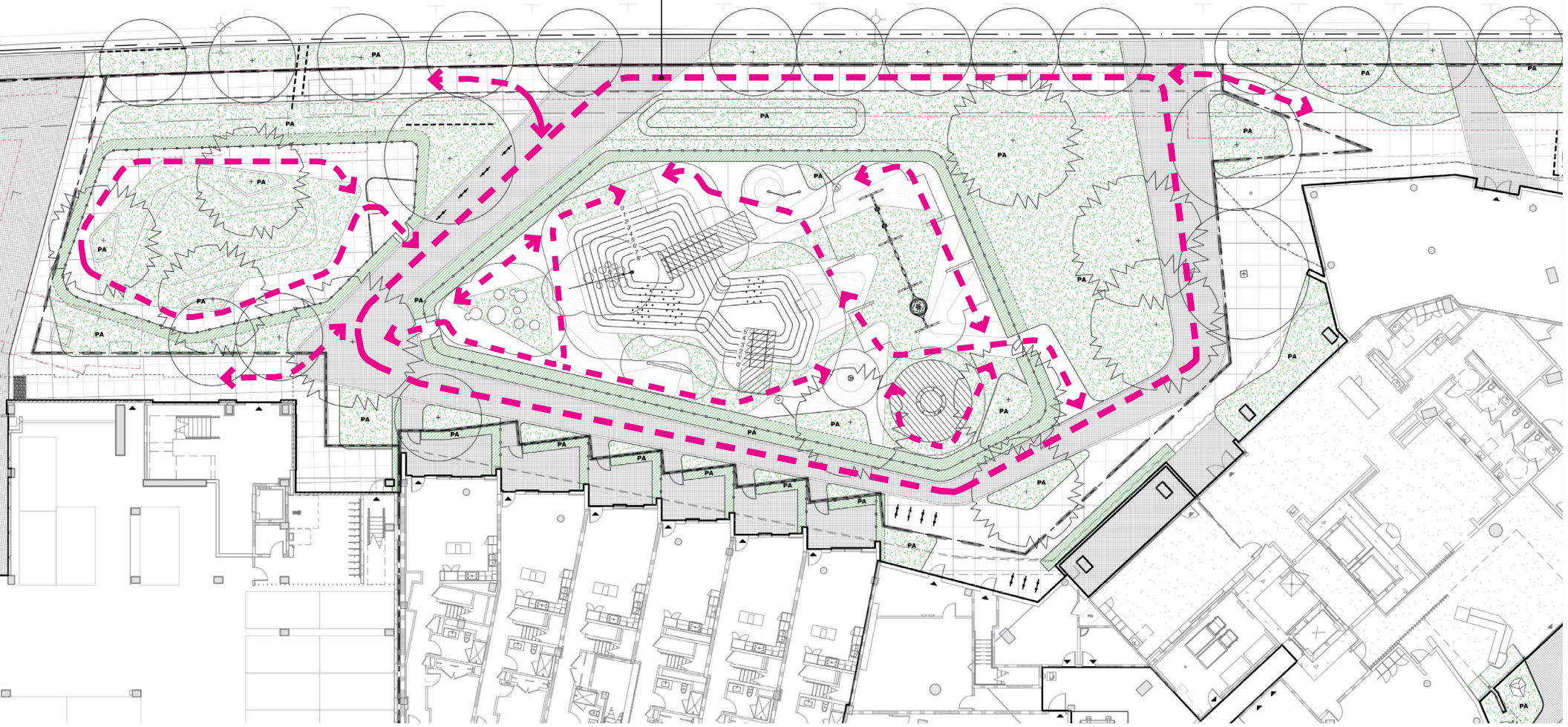


Mini Park Circulation

← - - - - - → ADA Accessible Route

Park Loop
500 ft

CALLE DE
LUNA



Tasman East

5150 Calle Del Sol & 2350 Calle De Luna

Mini Park Design



Additional Shade

 (3) SHADE TREES ADDED



MG - Magnolia grandiflora
Southern Magnolia



Tasman East



© 2019 SurfaceDesign, Inc. All Rights Reserved

SURFACEDSIGN INC

Lighting Plan

● MULTI-HEAD POLE LIGHT



● TREE UPLIGHT



● STREET POLE LIGHT



Tasman East

RELATED

© 2019 SurfaceDesign, Inc. All Rights Reserved.

SURFACEDSIGN INC.

Local Inspiration : Color Palette



*Colors are for illustrative purposes only and are subject to further development/material research

Site Furnishings



Park Bench



Bicycle Rack



Tubular Bottle Filler w/
Drinking Fountain
& Pet Fountain



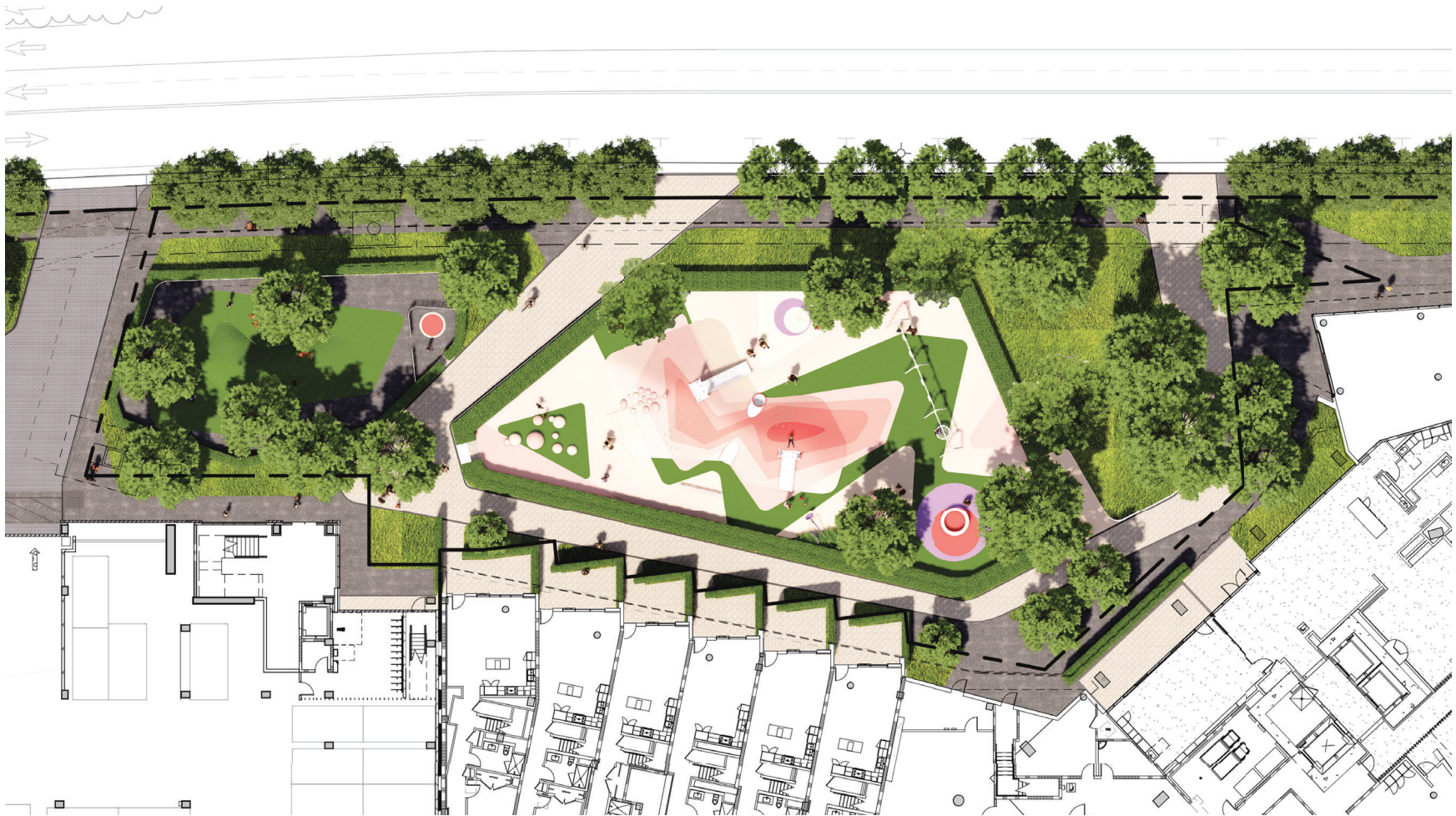
Free Standing Tubular
ADA Drinking Fountain



Pet Station
Mini Waste Station
Pet Waste Receptacle



Final Mini Park Design



Recommendation:

That Council approve the Park Master Plan -
Schematic Design for the New Public Mini-Park
located at 5150 Calle Del Sol & 2350 Calle De Luna.