

ATTACHMENT 2 - OPTION 1 (ALL OVERHEAD)



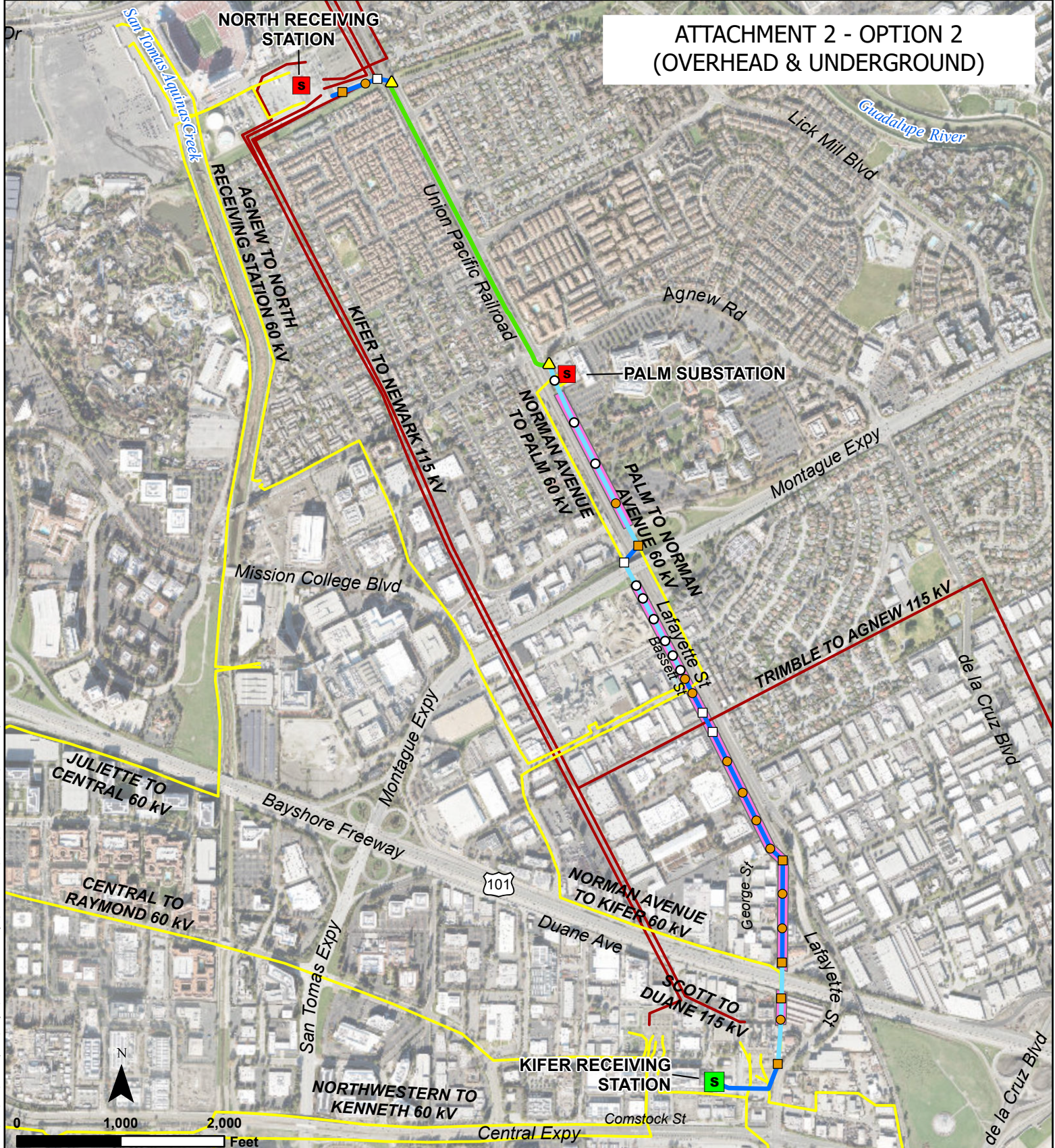
Path: H:\Shared\01 ECL\Silicon Valley Power\102 Projects\SVP-033 NRS-485 115kV Project\2300 Environmental\2311 GIS\2322 MVD\SVP_NRS_485_SVP_NRS_485.dwg
 Source: ECI, SVP, USGS, NHD, HIFLD, US Census Bureau, USDOT, CADPR, CA GIS, CA Energy Commission; Aerial Source: Sanborn Map Company, Maxar



S Existing Substation	Proposed Transmission Line
S New Substation	New Transmission Line
Deadend Pole <120 ft	Double Circuit existing 60kV w/ New 115kV (same poles)
Tangent Pole <120 ft	Existing Transmission Line
Deadend Pole 120+ ft	60 kV
Tangent Pole 120+ ft	115 kV
	Easement Needed

Silicon Valley Power
 NRS to KRS
 115 kV Transmission Line
 City of Santa Clara
 Santa Clara County, CA
**Preferred Route
 Option 1**

ATTACHMENT 2 - OPTION 2 (OVERHEAD & UNDERGROUND)



Source: ECI, SVP, USGS, NHD, HIFLD, US Census Bureau, USDOT, CADPR, CA, GIS, CA Energy Commission; Aerial Source: Sanborn Map Company, Maxar



S	Existing Substation	Proposed Transmission Line
S	New Substation	Overhead Transmission Line
□	Deadend Pole <120 ft	Double Circuit existing 60kV w/ New 115kV (same poles)
○	Tangent Pole <120 ft	Underground Transmission Line
■	Deadend Pole 120+ ft	Existing Transmission Line
●	Tangent Pole 120+ ft	60 kV
▲	Riser Pole <120 ft	115 kV
		■ Easement Needed

Silicon Valley Power
NRS to KRS
115 kV Transmission Line
City of Santa Clara
Santa Clara County, CA
**Preferred Route
Option 2**