

## Item 4, Update on the Santa Clara Valley Transportation Authority's BART Silicon Valley Phase II Extension Project and Action on a Revision to the West Portal Early Works Construction Transportation Management Plan for the Project

October 7, 2025



CURRENT as of October 2025 – FOR DISCUSSION ONLY

### Agenda



1. Project Overview / Update
2. Early Construction Activities at West Portal / Newhall Yard
  - Construction Transportation Management Plan (CTMP)
  - CTMP Amendment
  - Outreach
  - Construction Update
3. Recommendation



# 1. Project Overview / Update

CURRENT as of October 2025 – FOR DISCUSSION ONLY – Early Construction Activities at West Portal

3

## VTA's BART Silicon Valley Program

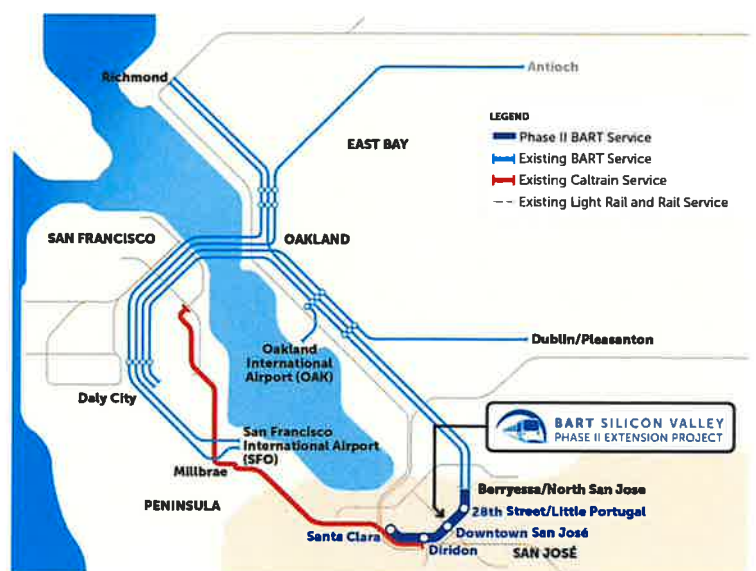


### Phase I Extension

- 10-mile extension
- Two stations
- BART service started in 2020

### Phase II Extension

- 6-mile extension (5-mile subway)
- Four stations
- Newhall Yard & Maintenance Facility

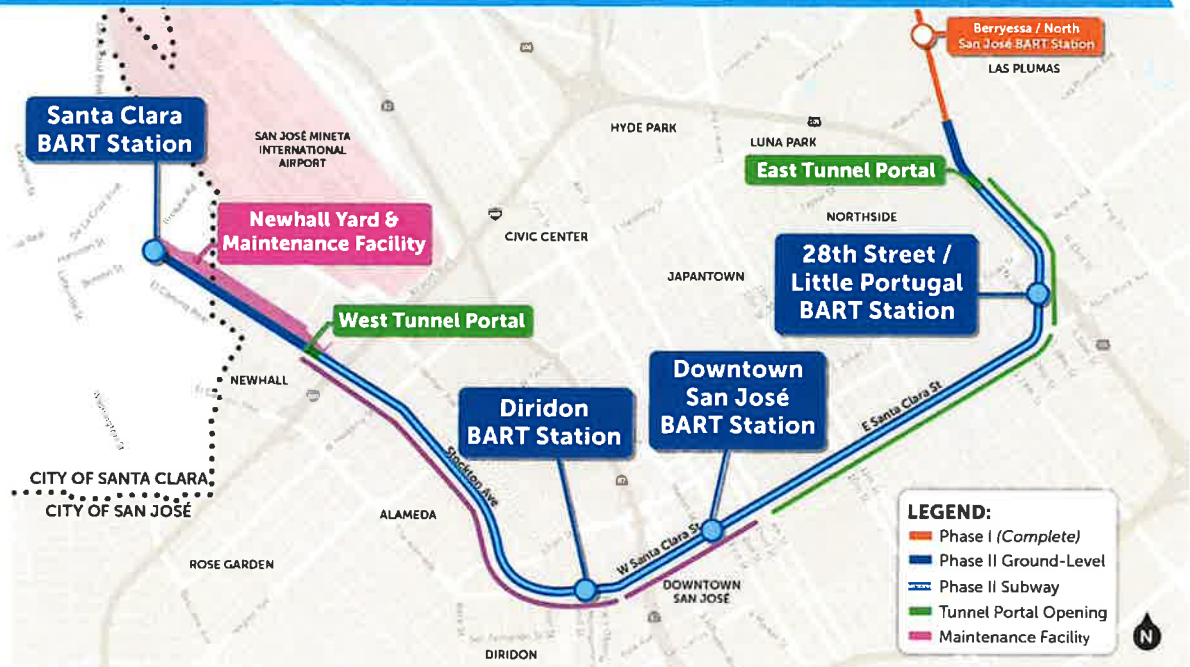


*Ringling the Bay with fast, frequent transit*

CURRENT as of October 2025 – FOR DISCUSSION ONLY – Early Construction Activities at West Portal

4

## Phase II Extension



CURRENT as of October 2025 – FOR DISCUSSION ONLY – Early Construction Activities at West Portal

5

## Major Milestones



- West Portal Groundbreaking Ceremony: **Friday, June 14, 2024**
- FTA's New Starts federal funding commitment of **\$5.1 billion** announced: **August 2, 2024**
  - *Second largest Full Funding Grant Agreement in FTA's Capital Improvement Grant Program history*
- State grant award of **\$100 million** announced: **June 27, 2025**



CURRENT as of October 2025 – FOR DISCUSSION ONLY – Early Construction Activities at West Portal

6

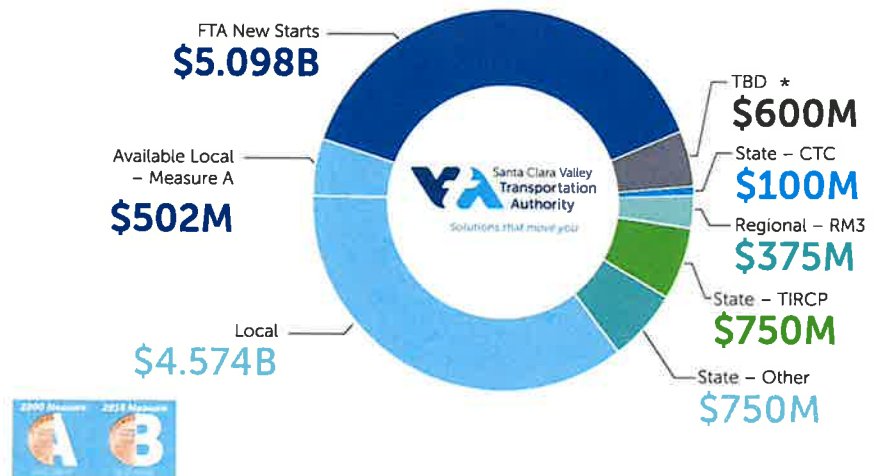


# Project Funding



## Progress on Addressing Funding Gap\*

- Refining Cost Savings
- Exploring additional non-local funding sources



CURRENT as of October 2025 – FOR DISCUSSION ONLY – Early Construction Activities at West Portal

7

# Cost Saving Efforts



*Identify and screen cost saving ideas within an established framework and guardrails*



## • Key Areas Explored for Cost Savings

- Design Criteria & Requirements
- Systems Design
- Station Size/Design
- Parking Garages
- Newhall Yard
- Tunnel Size/Configuration
- Concurrent Tunneling
- Contract Packaging

CURRENT as of October 2025 – FOR DISCUSSION ONLY – Early Construction Activities at West Portal

8

## Refinements at Santa Clara BART Station



- Provided station canopy structural efficiency and maintained Orchard Pavillion Concept per Design Review Committee feedback
- Use of cost-effective station materials
- Implemented **systems efficiencies** to optimize equipment layout and reduce **station infrastructure facilities (SIF) footprint**
- Implemented refinements within the Newhall Yard
  - the co-located BART patron parking converted from a 500 space parking garage on top of SIF and storage tracks to 500 **surface parking spaces**

CURRENT as of October 2025 – FOR DISCUSSION ONLY – Early Construction Activities at West Portal

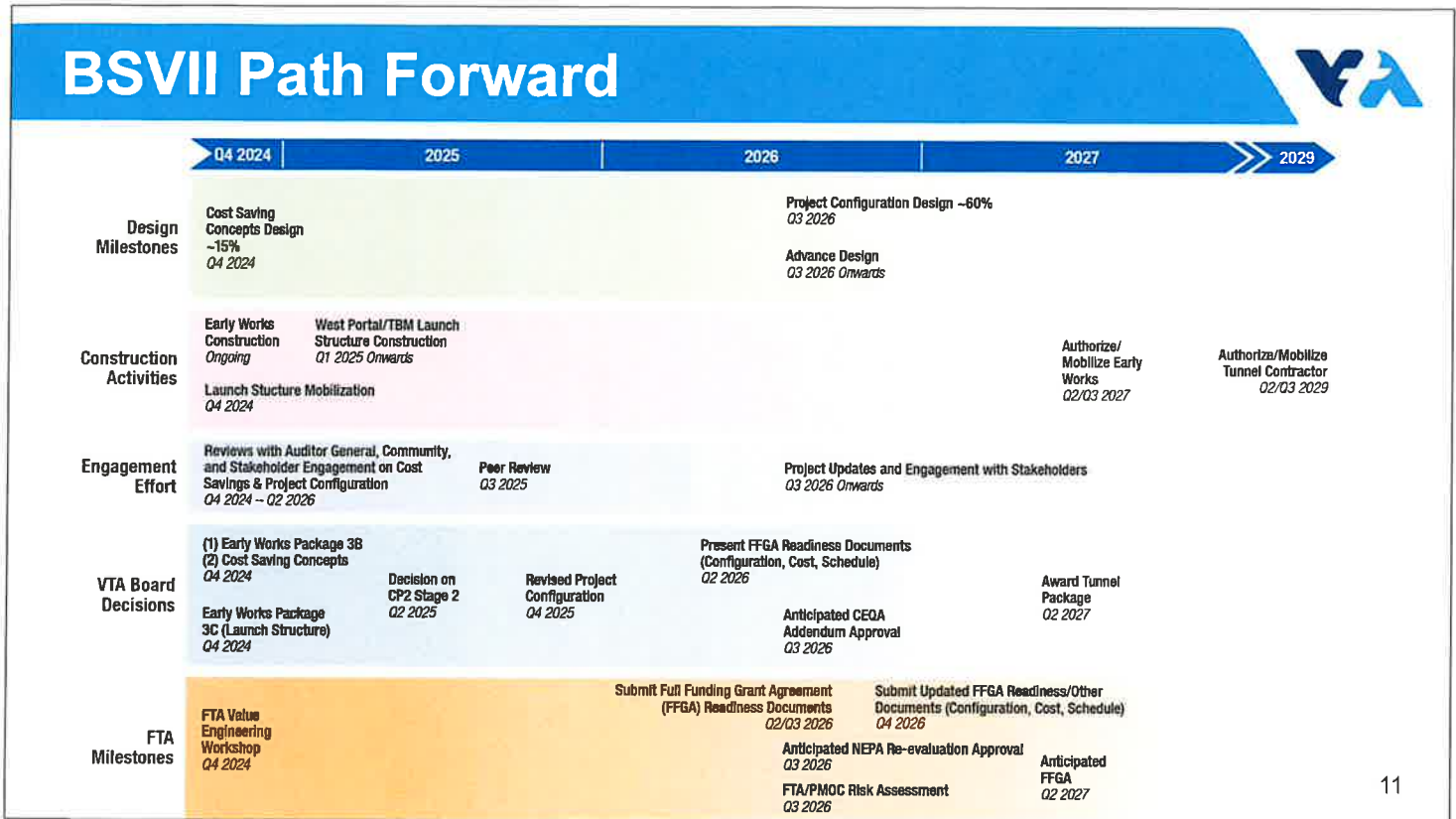
9

## Future Santa Clara Station

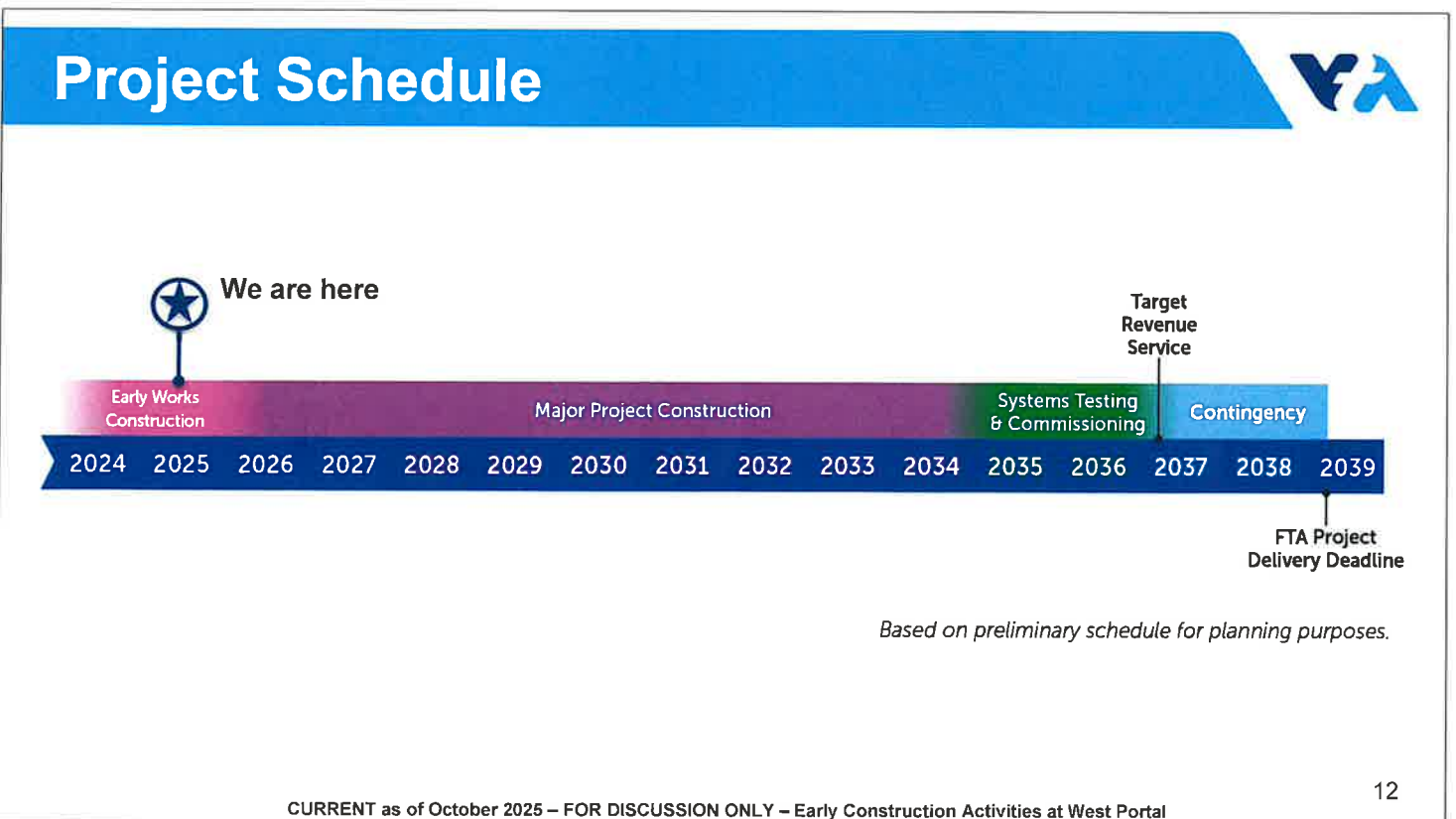


CURRENT as of October 2025 – FOR DISCUSSION ONLY – Early Construction Activities at West Portal

10



11





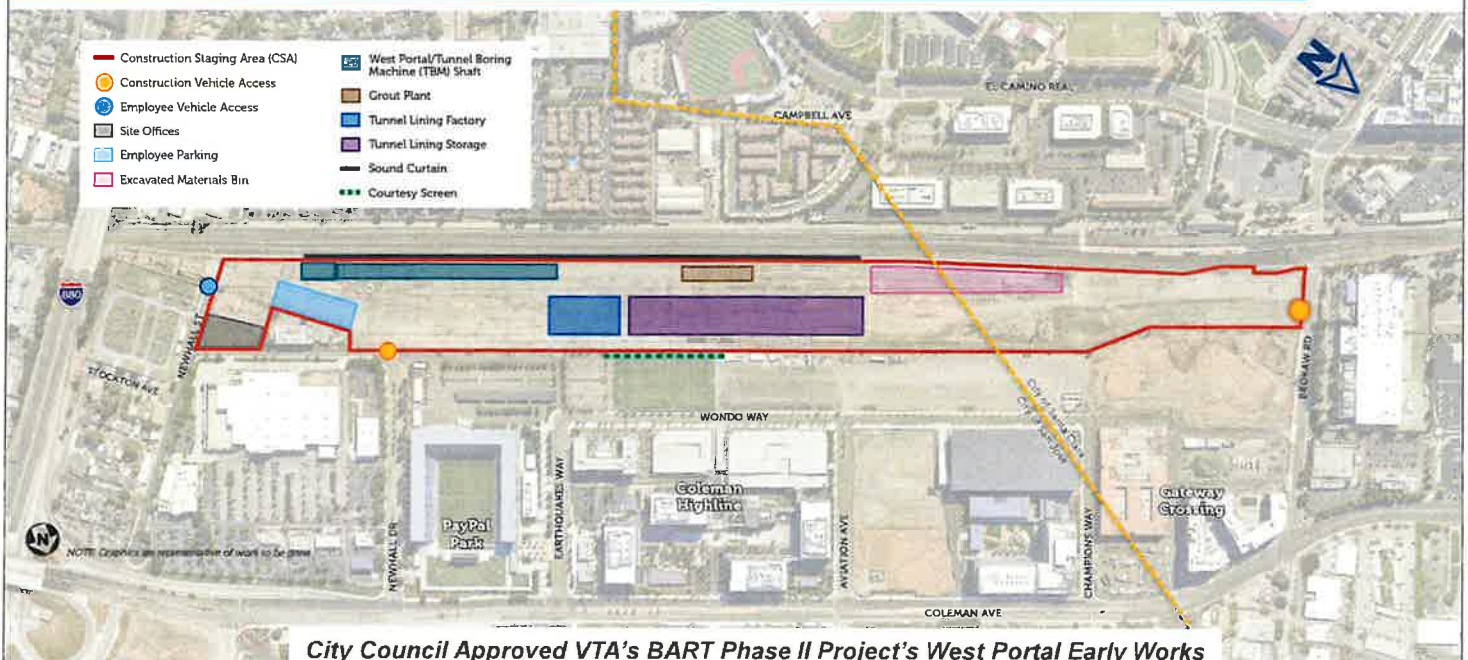


## 2. Early Construction Activities at West Portal / Newhall Yard

CURRENT as of October 2025 – FOR DISCUSSION ONLY – Early Construction Activities at West Portal

13

### Early Works at the West Portal / Newhall Yard



14

# Construction Transportation Management Plan



The **Construction Transportation Management Plan (CTMP)** will be used “to coordinate location-specific circulation and access within and around the construction areas for all modes, including automobiles, trucks and construction vehicles, bicyclists, pedestrians, and public transportation, such as buses and light rail.”



CURRENT as of October 2025 – FOR DISCUSSION ONLY – Early Construction Activities at West Portal

15

## CTMP Amendments



### 1. Extension of Nighttime Operations

- Additional two work hours Monday through Saturday from 4 AM to 6 AM

### 2. Sunday Work (As-Needed)

- On-site activities with minimal potential impacts on surroundings
- No truck hauling
- 6 AM to 6 PM

CTMP/ Hours/Days	Approved CTMP (06/2023)	CTMP Amendment
Work Hours*	6 AM to 4 AM	6 AM to 6 AM
Work Days	Monday through Saturday	Monday through Saturday + Sunday** (as-needed)
*Work hours shown for double shifts		
**Sunday 6 AM to 6 PM		

CURRENT as of October 2025 – FOR DISCUSSION ONLY – Early Construction Activities at West Portal

16



# Noise and Vibration Mitigations



The Project complies with federal noise & vibration limits and protocols to mitigate levels beyond those limits.

## Monitoring Systems

- Devices to track noise & vibration automatically and continuously
- Manual tests during peak noise & vibration-generating activities



## Mitigations

- Limiting select activities (construction equipment and operations) during nighttime and weekends



CURRENT as of October 2025 – FOR DISCUSSION ONLY – Early Construction Activities at West Portal

17

# Construction Best Practice: Dust



## Dust Controls

- Covering or moistening trucks carrying loose materials
- Removing all visible mud/dirt on adjacent public roads
- Suspending dust-intensive activities in high winds
- Installed screening around the site



Screening on fences at Santa Clara Station & Newhall Yard



Wheel Wash Keeps our Streets Clean

CURRENT as of October 2025 – FOR DISCUSSION ONLY – Early Construction Activities at West Portal

18

## Outreach & Stakeholder Engagement



### Briefings with Key Stakeholders

- Meetings with Hunter Partners, Holland Partners, PayPal Park, Costco, Apple, and Santa Clara University
  - Shared proposed changes to working hours (6 AM to 6 AM) Monday through Saturday, and Sunday if needed; No major concerns flagged
- Quarterly Community Working Group meetings

### 24-Hour Project Hotline

- No nightwork noise complaints
- One evening residential light complaint that was immediately rectified



Senior staff from San Jose and Santa Clara

CURRENT as of October 2025 – FOR DISCUSSION ONLY – Early Construction Activities at West Portal

19

## Outreach & Stakeholder Engagement



### Engagement Activities & Neighborhood Meetings

- Santa Clara University Career Fair
- Encanto & Altura Homeowners Association
- Orlo Property Management & Tenants Meeting
- Newhall Neighborhood "Coffee in the Park"

### Construction Notifications

- Direct mail postcard 1,000 feet from Newhall Yard & Maintenance Facility
- Distributed construction notices for 24-hour West Portal work and start of soil excavation via email and website
- Emailed & published Monthly Construction Updates
- Posted on BSVII Social Media



CURRENT as of October 2025 – FOR DISCUSSION ONLY – Early Construction Activities at West Portal

20



## West Portal / Newhall Yard Construction Progress



### Construction Activities (commenced April 2024):

- Site preparation:
  - grading
  - utility installation
  - field office
  - construction of access roads
- Noise curtain installation
- Groundwater dewatering to excavate for launch structure
- Support of Excavation (SOE)
- Construction of tunnel launch structure:
  - guide walls for underground support
  - install Y-shaped concrete panels, to form underground support wall



### Nighttime Construction Activities (commenced June 2025):

- Construction of deep concrete walls underground to hold back water and soil, involving trench excavation, slurry installation, and concrete pours

CURRENT as of October 2025 – FOR DISCUSSION ONLY – Early Construction Activities at West Portal

21

## Response to Community Feedback



- Recent modification and improvements based on community feedback
- Mobile sound curtain installed on impact pile machine
- Further reduces noise of work below required monitoring threshold



Additional sound curtain adjacent to work being performed



# West Portal / Newhall Yard Construction Progress



Mass Excavation of Launch Structure Began Week of June 8



Test Lift of Rebar Cage Tripping Frame



135' High Tripping Frame



Excavation of "Tunnel Eye" – Wall Where Tunnel Boring Machine Will Start Boring



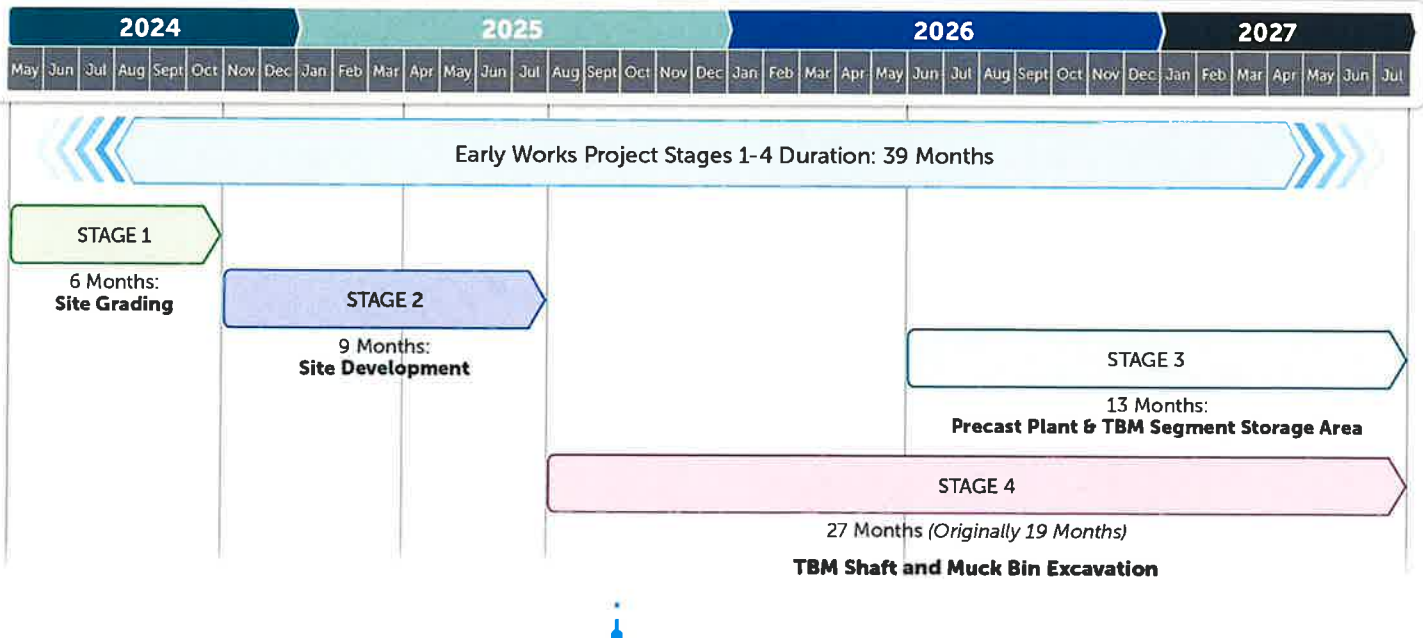
Concrete Placement for Support Walls

23



CURRENT as of October 2025 – FOR DISCUSSION ONLY – Early Construction Activities at West Portal

# Early Construction Schedule



CURRENT as of October 2025 – FOR DISCUSSION ONLY – Early Construction Activities at West Portal

24



### 3. Recommendation

CURRENT as of October 2025 – FOR DISCUSSION ONLY – Early Construction Activities at

25

### Recommendation



1. *Approve the Revision to the West Portal Early Works Construction Transportation Management Plan for the VTA's BART Phase II Extension Project in the form presented*
2. *Authorize the City Manager or designee to approve minor modifications, such as annual updates or supplemental plans, to the CTMP, if needed.*

CURRENT as of October 2025 – FOR DISCUSSION ONLY – Early Construction Activities at West Portal

26