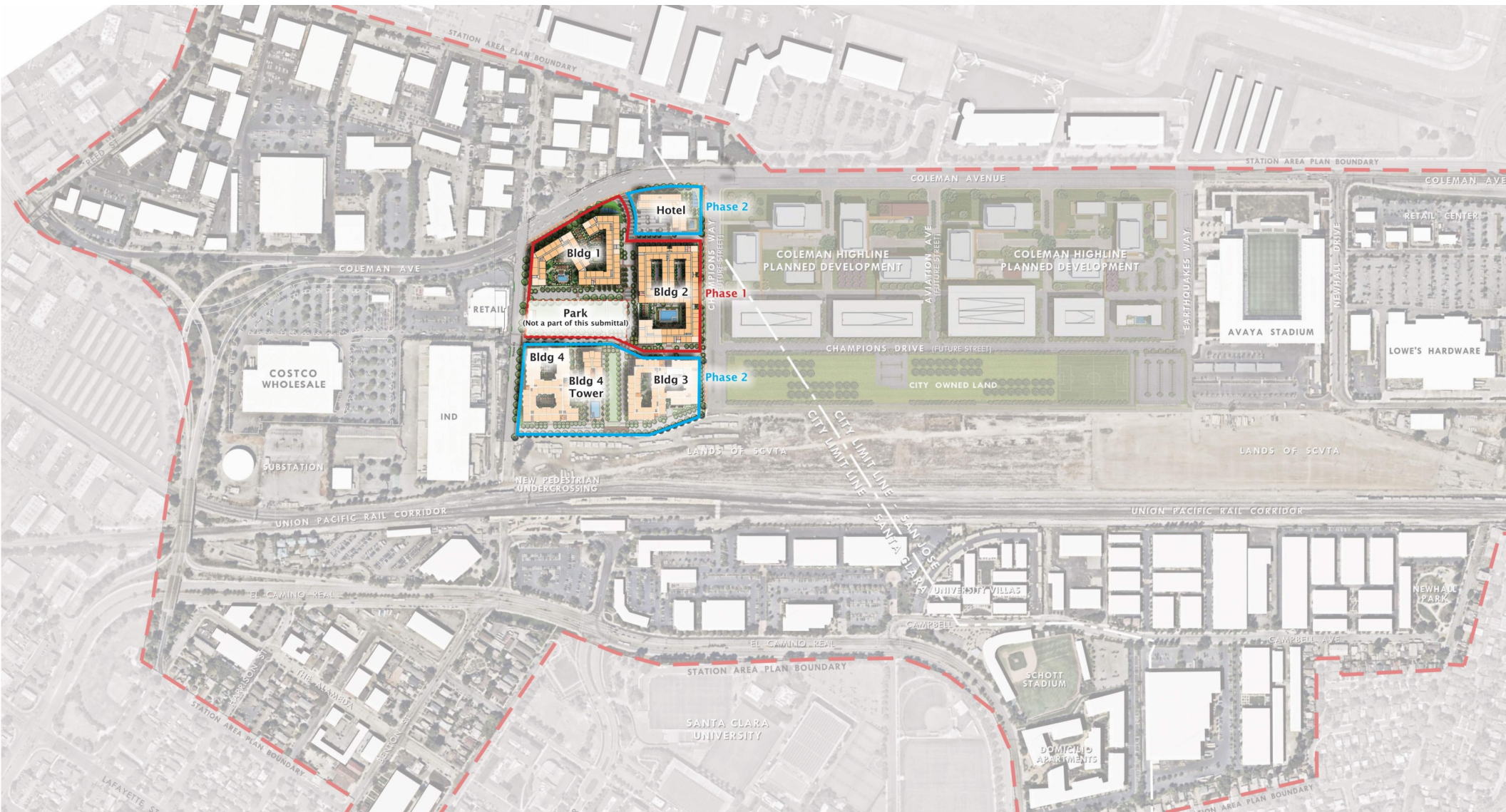


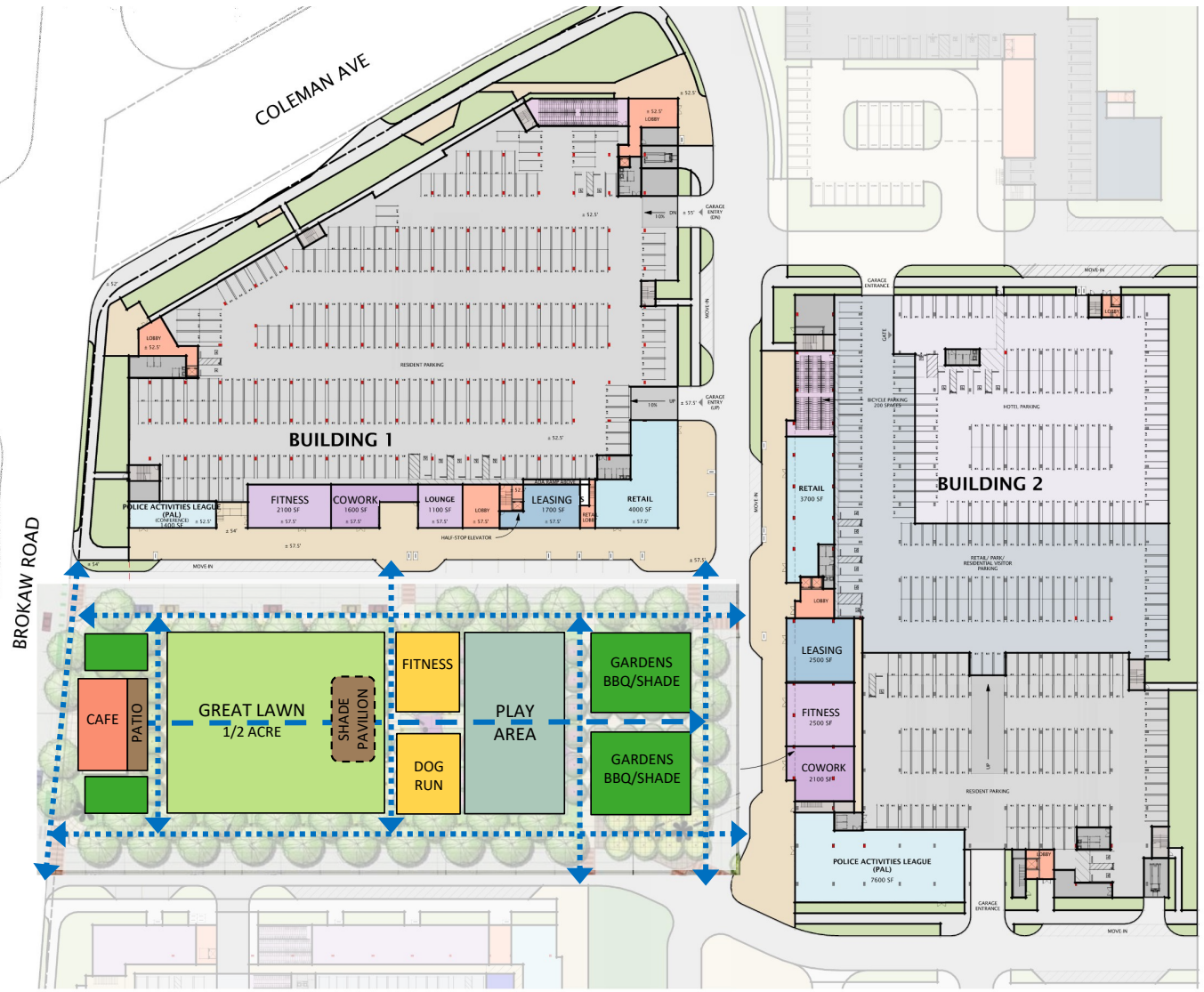


GATEWAY CROSSINGS NEIGHBORHOOD PARK

Parks & Recreation Commission
Community Feedback Summary

PARK SITE /
2019 PARK PLAN





GATEWAY CROSSINGS NEIGHBORHOOD PARK COMMUNITY FEEDBACK

- Community Meeting, July 07
- Parks & Recreation Commission Meeting, July 20
- Online Community Survey: 280 Responses Received
3.5 Weeks, July 8 - August 4
- In-person Celebrate Santa Clara Outreach Event, August 21: +120 Participants
- Over 400 Community Members have provided Feedback



Let us know which **activities and features** you would like the park to include by marking the circles next to your **4 highest priorities** in each category. We appreciate your input.



2019 program + options

multi-use lawn

- maximize open flat lawn
- increase tree-shading at edges
- integrate topography at edges
- integrate active park elements with lawn

children's play area

- equipment-based play
- themed play area
- environmental play

public art

- modest sculptures at park corners
- larger single integrated sculpture
- interactive art element

gardens within park

- herb garden at outdoor BBQ areas
- horticultural display garden
- xeric display garden
- rain garden – environmental education



supplemental features

- garden room / reading room
- tree-shaded grove
- bocce
- shuffleboard
- table tennis
- foosball
- climbing wall (low and safe for kids)
- walking loop
- movable furnishings
- communal fire feature
- community notice board
- write-in _____
- _____



park activities

- quite relaxation or reading
- pickup sports
- fitness classes, tai chi, yoga (on lawn or deck)
- outdoor fitness with equipment
- performances
- food truck access
- outdoor cooking & dining (BBQ areas)
- dog walking & play
- activities for kids
- write-in _____
- _____

MULTI-USE LAWN – Survey Options

- MAXIMIZE FLAT OPEN LAWN
- INTEGRATE TOPOGRAPHY – PLAY, SEATING, PROSPECT
- INTEGRATE ACTIVE PARK ELEMENTS WITH CENTRAL LAWN
- EXPAND TREE-SHADED LAWN EDGES



5%

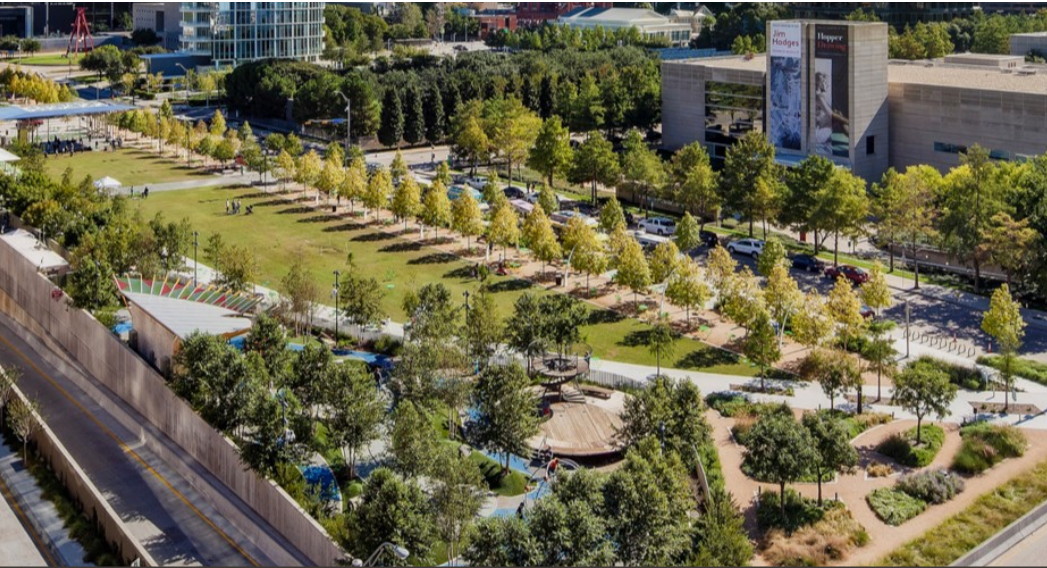
PETERSEN STUDIO

MAXIMIZE FLAT OPEN LAWN



PETERSEN STUDIO

INTEGRATE TOPOGRAPHY – PLAY, SEATING, PROSPECT



PETERSEN STUDIO



INTEGRATE ACTIVE PARK ELEMENTS WITH CENTRAL LAWN



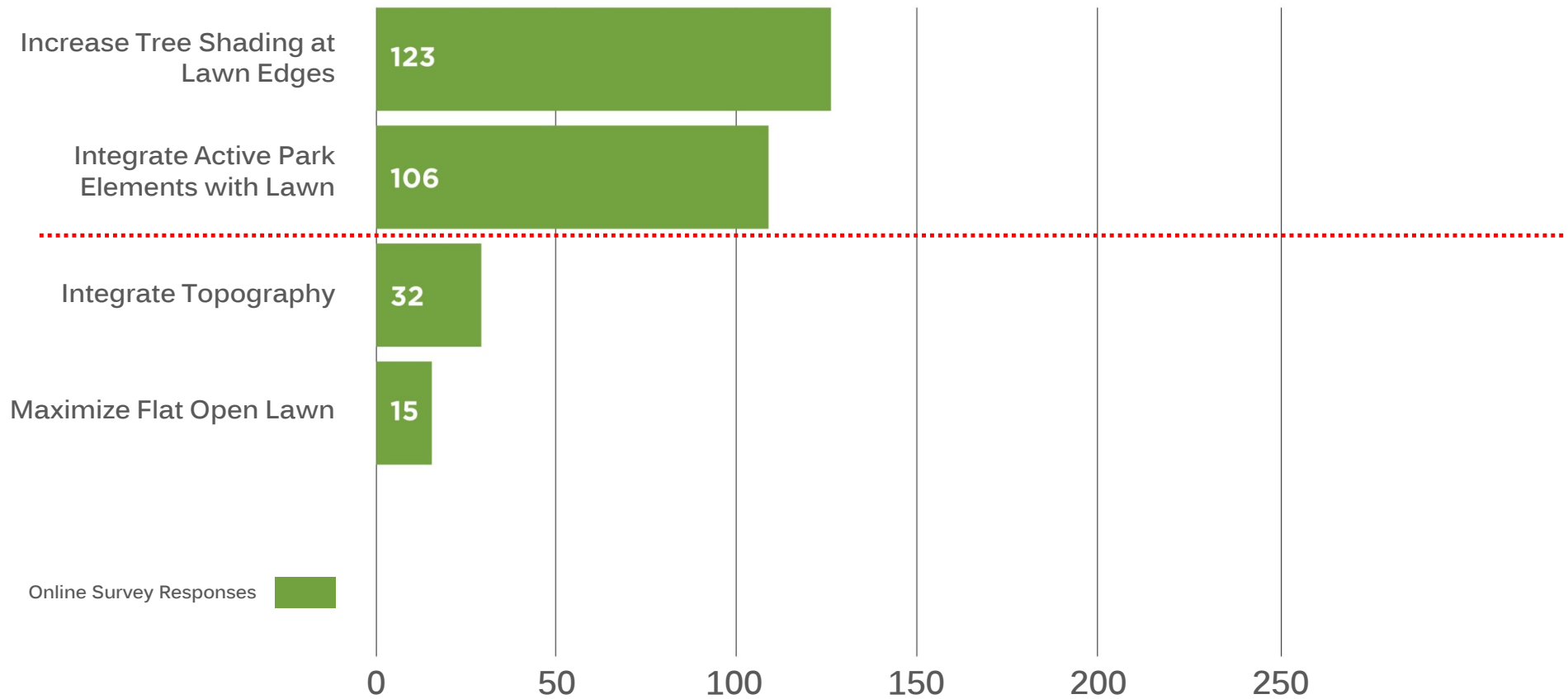
44%

PETERSEN STUDIO

EXPAND TREE-SHADED LAWN EDGES

MULTI-USE LAWN

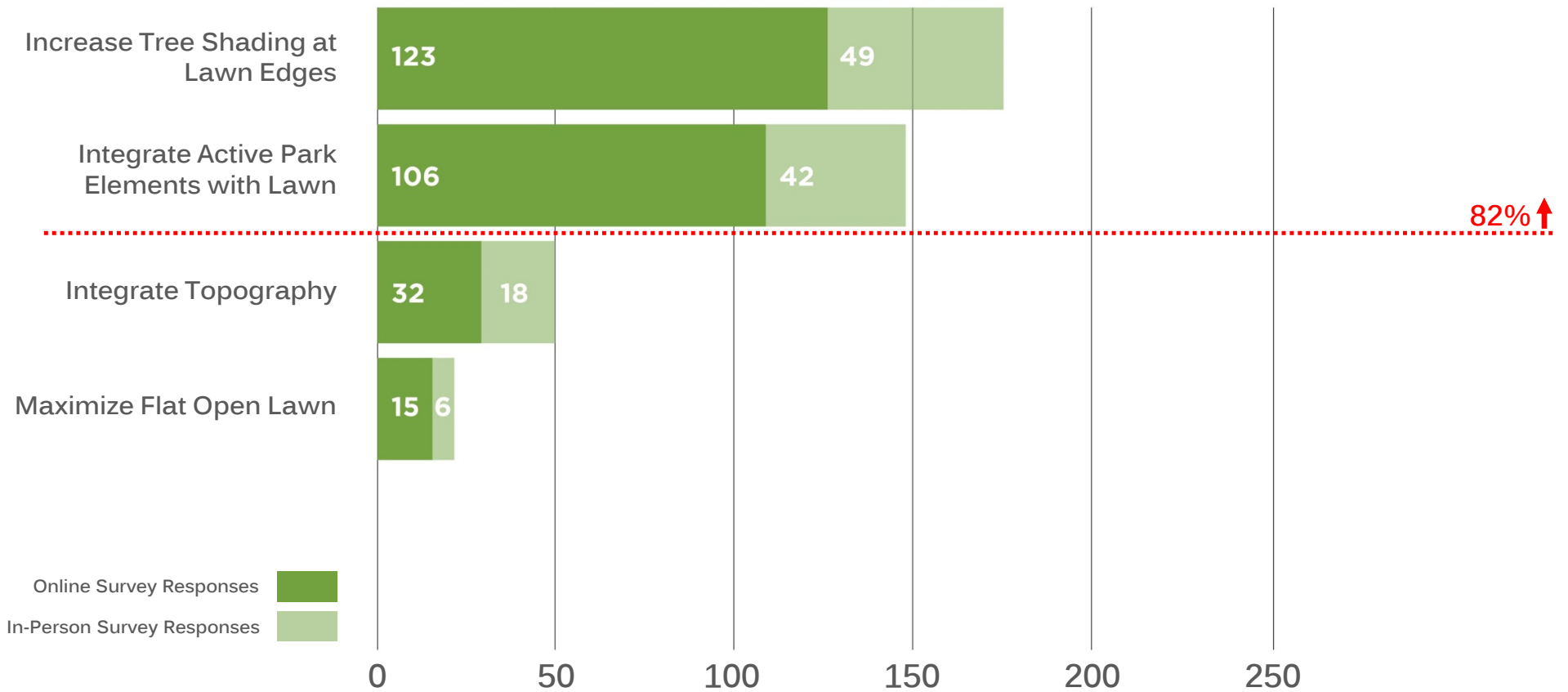
The ½-acre multi-use lawn is the park's largest element.
How would you like us to configure the multi-use lawn?



MULTI-USE LAWN

391 RESPONSES

The ½-acre multi-use lawn is the park's largest element.
How would you like us to configure the multi-use lawn?



PLAY AREA - Survey Options

- EQUIPMENT-BASED PLAY AREA
- THEMED PLAY
- ENVIRONMENTAL PLAY



PETERSEN STUDIO

EQUIPMENT-BASED PLAY AREA



18%

PETERSEN STUDIO

THEMED PLAY



64%

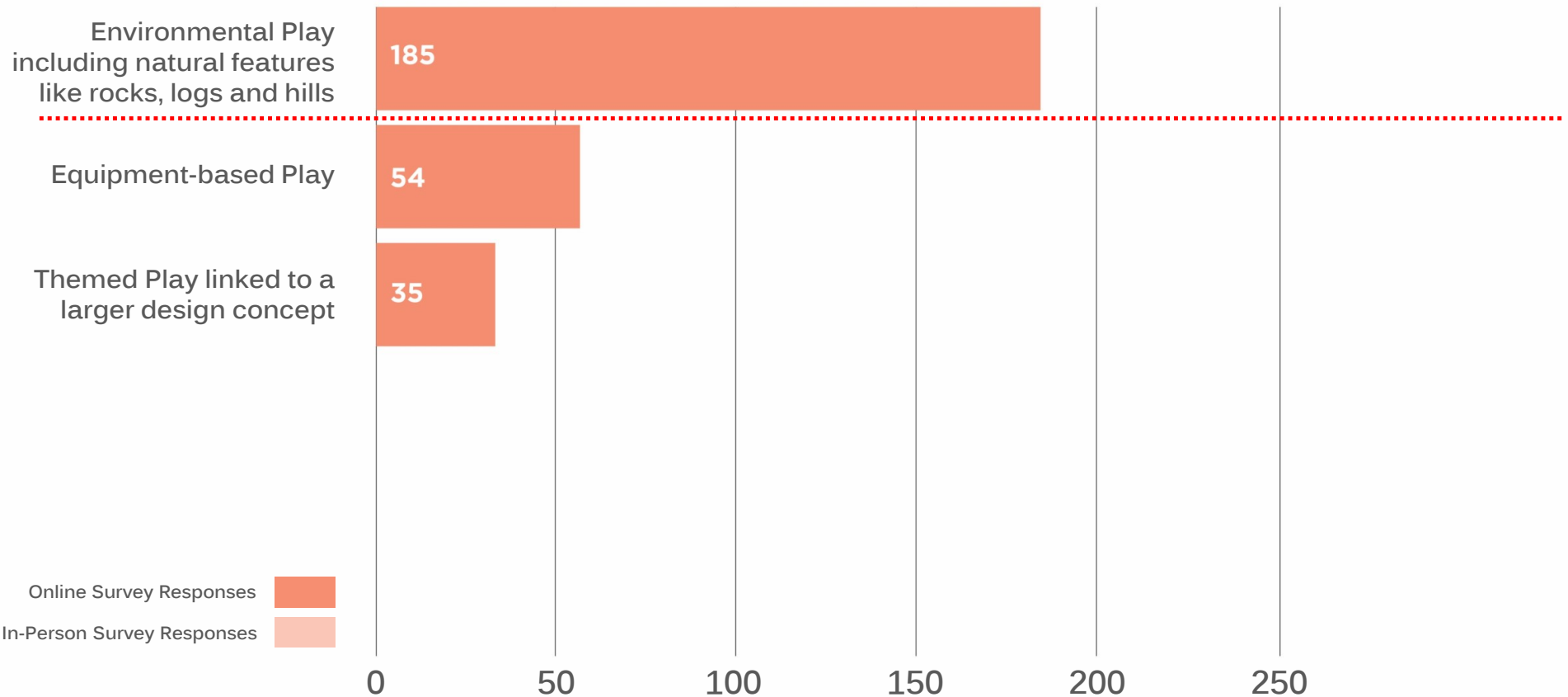
PETERSEN STUDIO

ENVIRONMENTAL PLAY

PLAY AREA

404 RESPONSES

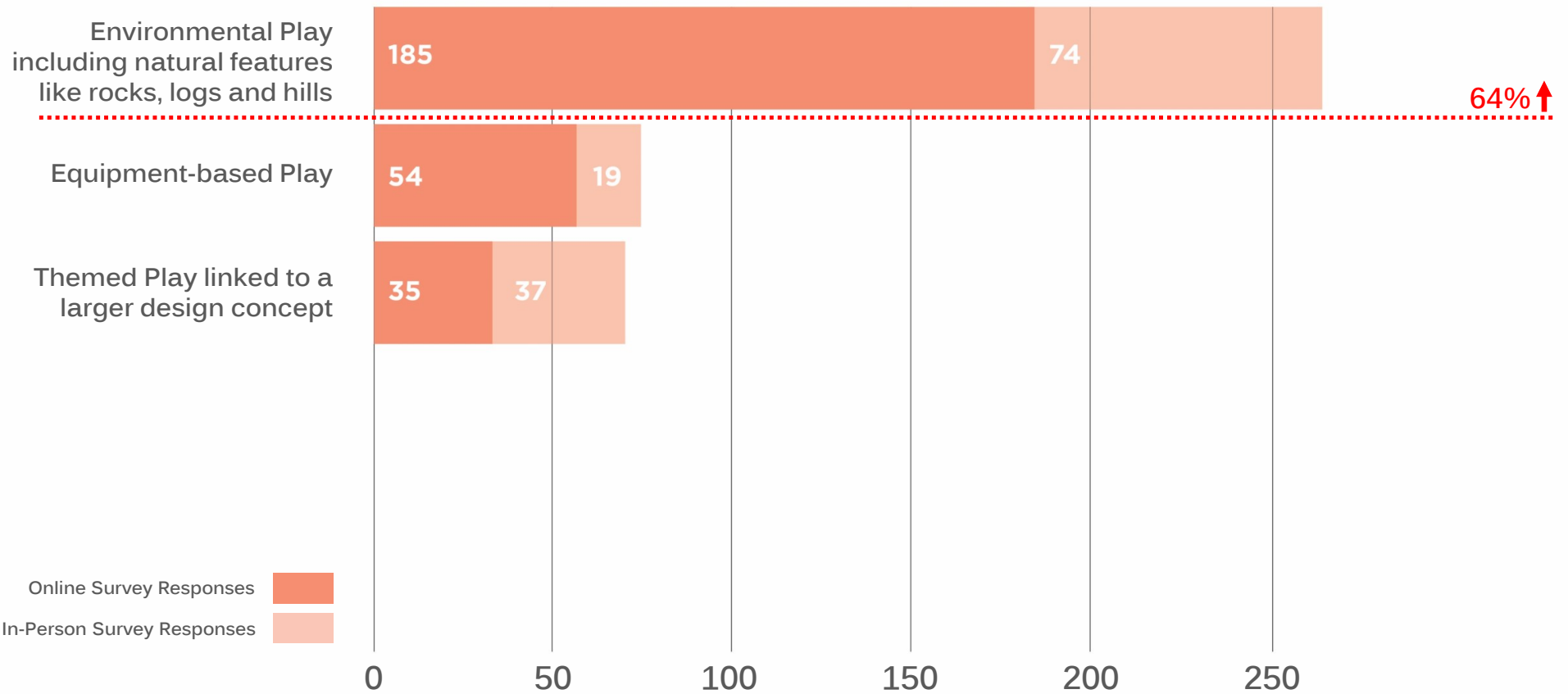
The play area will accommodate multiple age groups and ability levels.
What type of experiences should the children's play area prioritize?



PLAY AREA

404 RESPONSES

The play area will accommodate multiple age groups and ability levels.
What type of experiences should the children's play area prioritize?



PUBLIC ART - Survey Options

- PARK-SCALE INTEGRATED ART ELEMENT
- SMALL-SCALE ART AT PARK CORNERS
- INTERACTIVE ART



14%

PETERSEN STUDIO

PARK-SCALE INTEGRATED ART ELEMENT



PETERSEN STUDIO



SMALL-SCALE ART AT PARK CORNERS



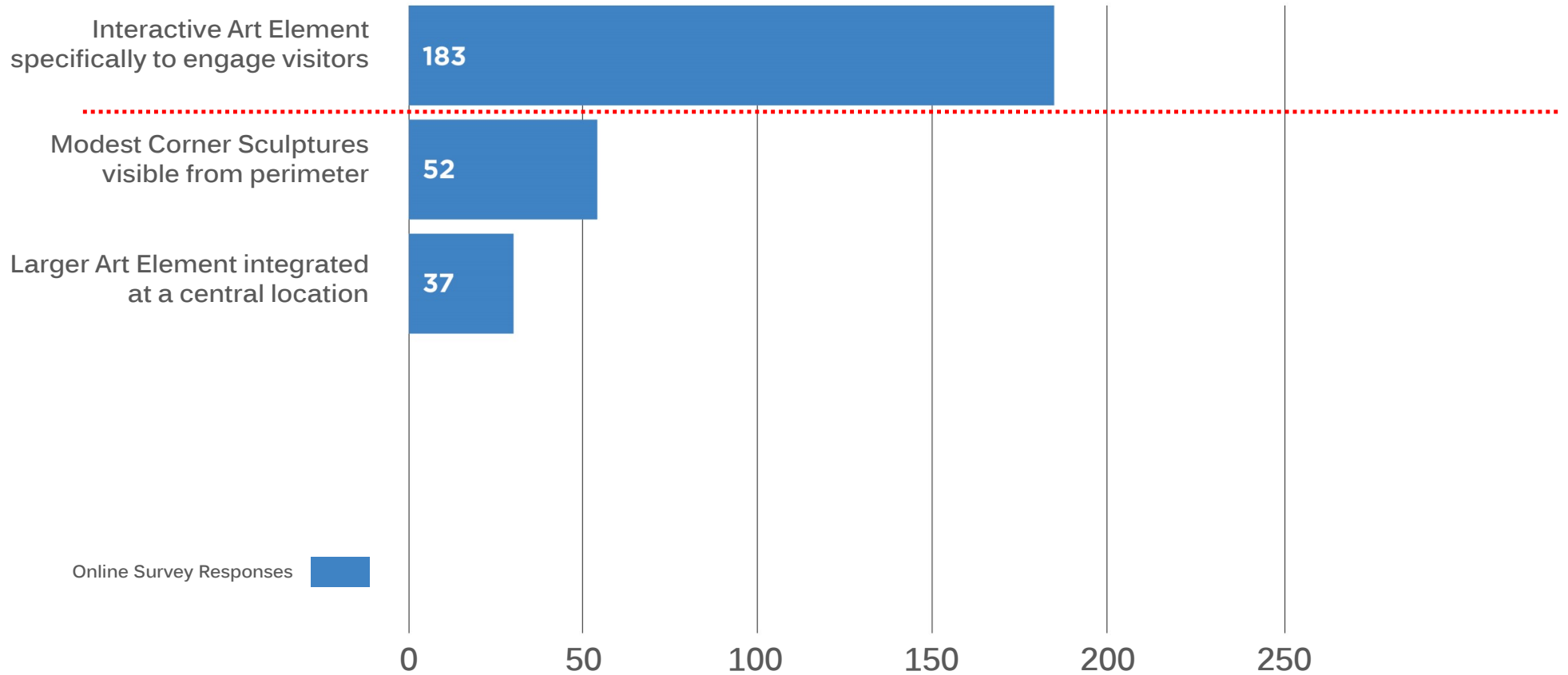
62%

PETERSEN STUDIO

INTERACTIVE ART

PUBLIC ART

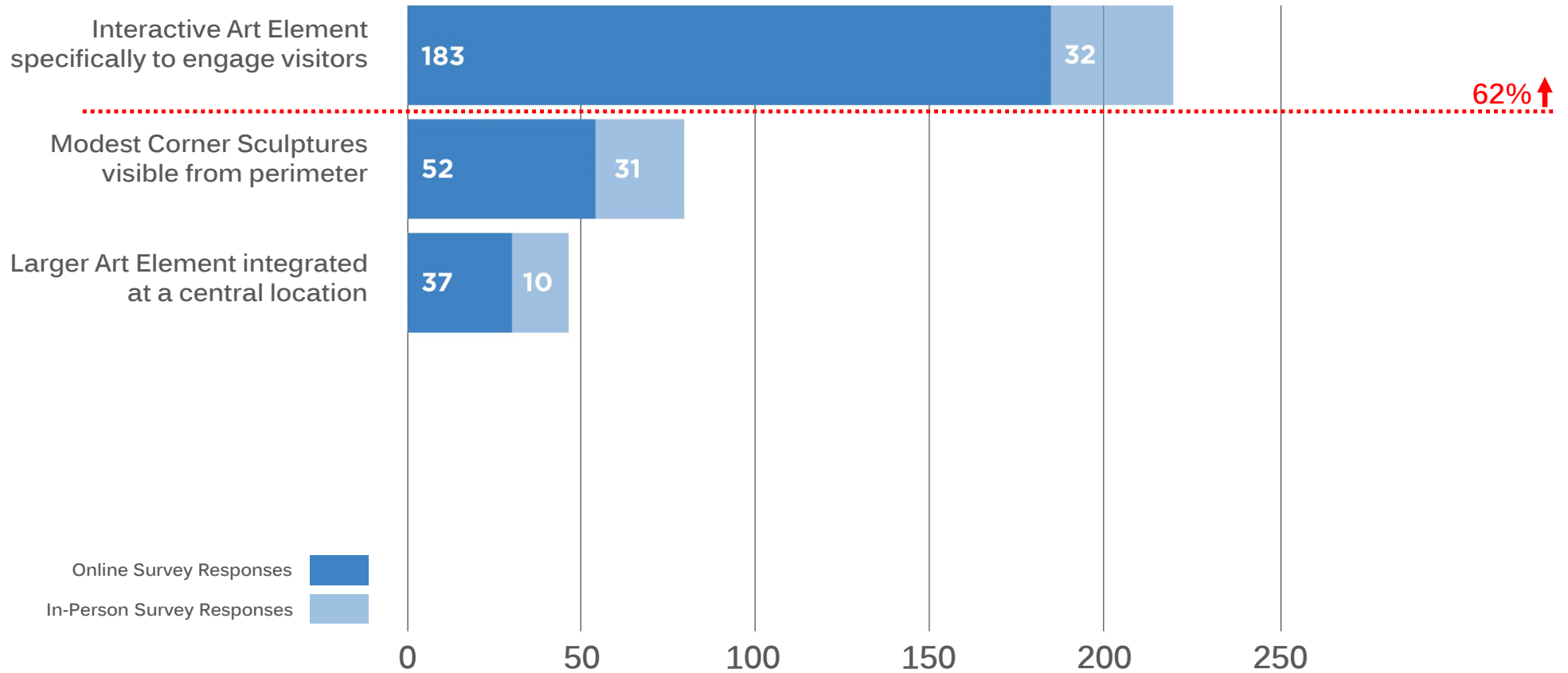
How should public art be expressed and experienced within the park?



PUBLIC ART

345 RESPONSES

How should public art be expressed and experienced within the park?



GARDEN - Survey Options

- HORTICULTURAL DISPLAY GARDEN
- XERIC DISPLAY GARDEN
- HERB GARDEN AT BBQ / DINING AREAS
- RAIN GARDEN – ENVIRONMENTAL EDUCATION



20%

PETERSEN STUDIO

HORTICULTURAL DISPLAY GARDEN WITH PROGRAM



Photo: Succulents, Robin Stockwell

25%

PETERSEN STUDIO

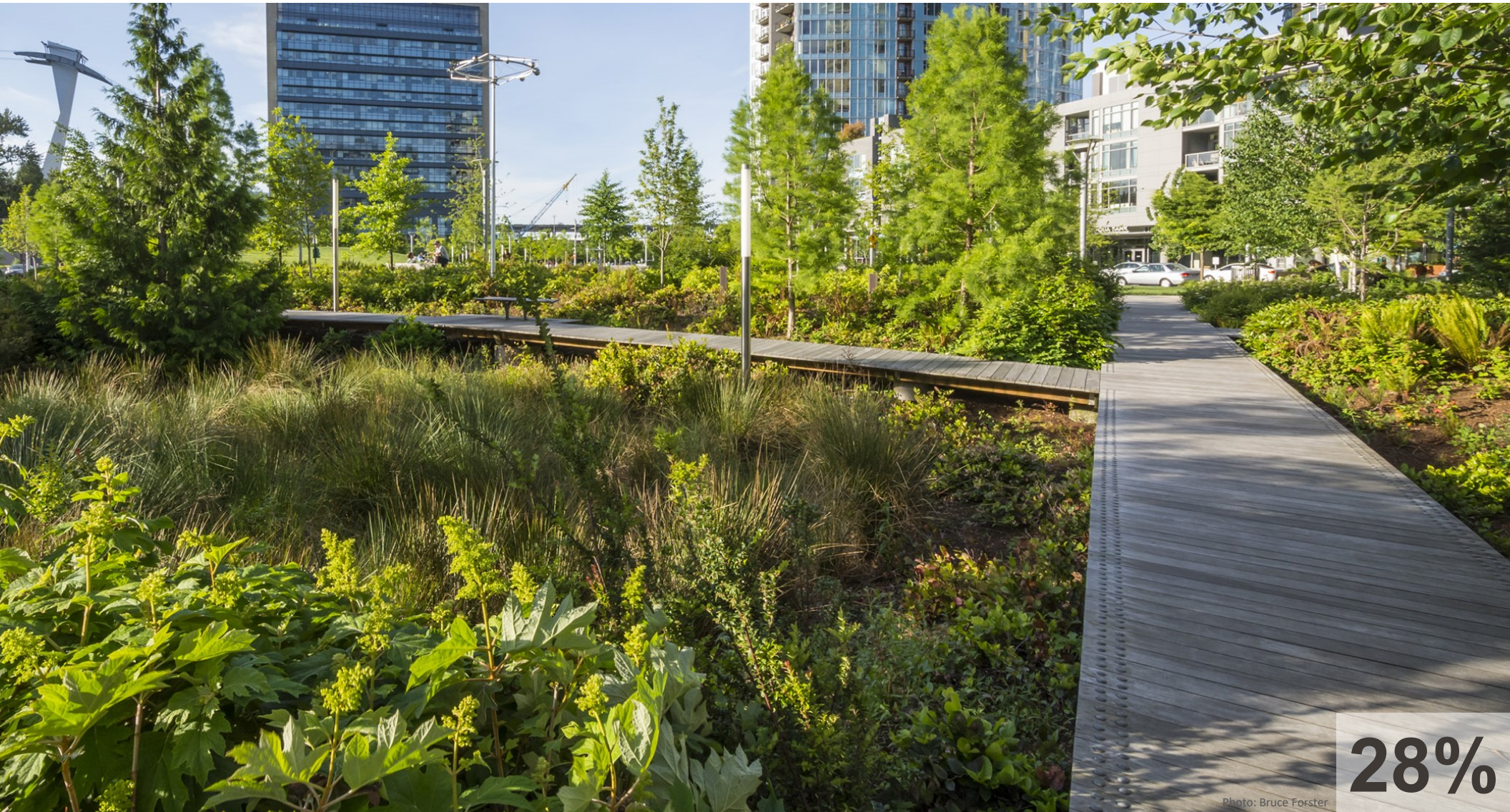
XERIC DISPLAY GARDEN - MINIMAL IRRIGATION



28%

PETERSEN STUDIO

HERB GARDEN AT DINING / BBQ AREAS



28%

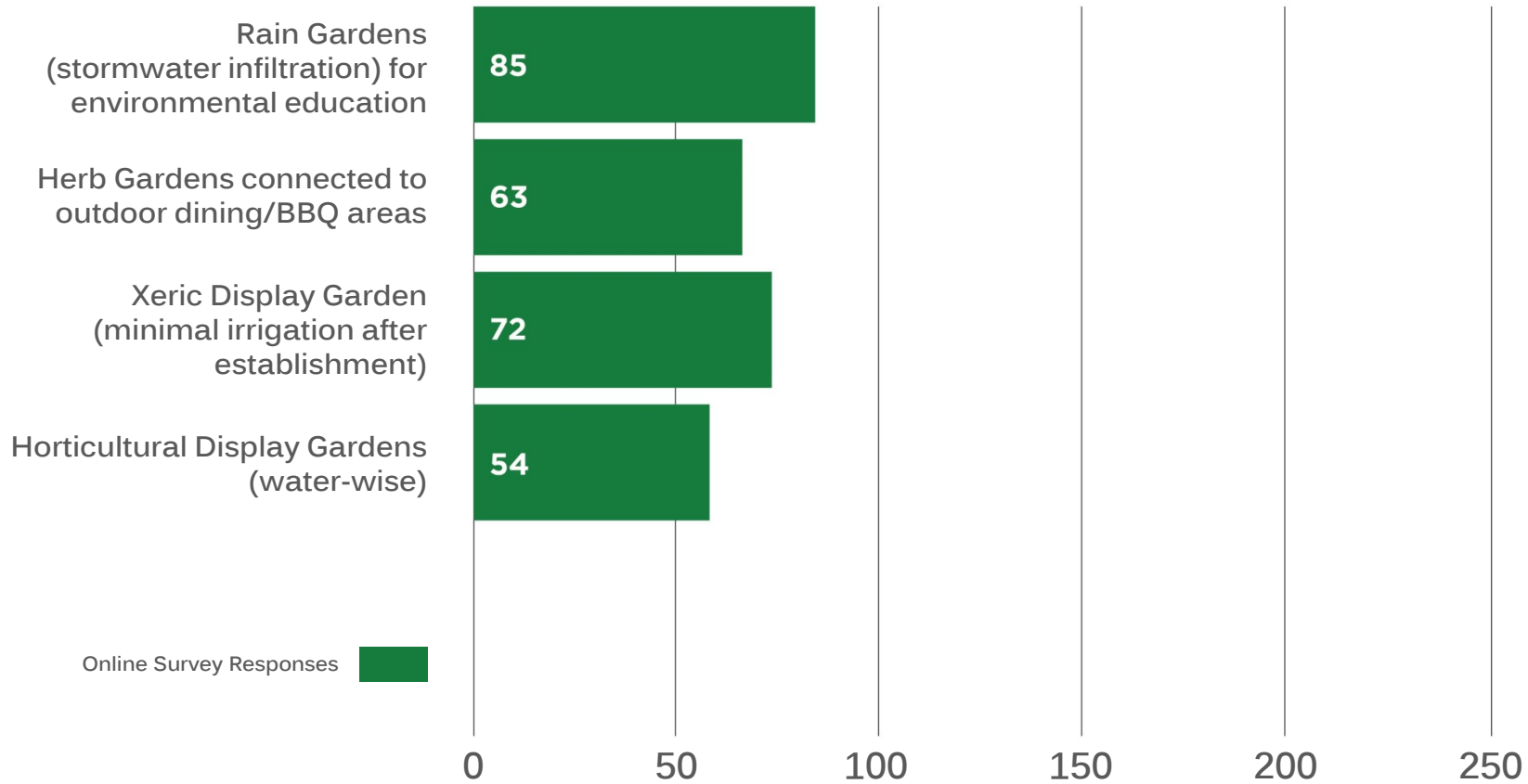
Photo: Bruce Forster

PETERSEN STUDIO

RAIN GARDEN - ENVIRONMENTAL EDUCATION

GARDENS

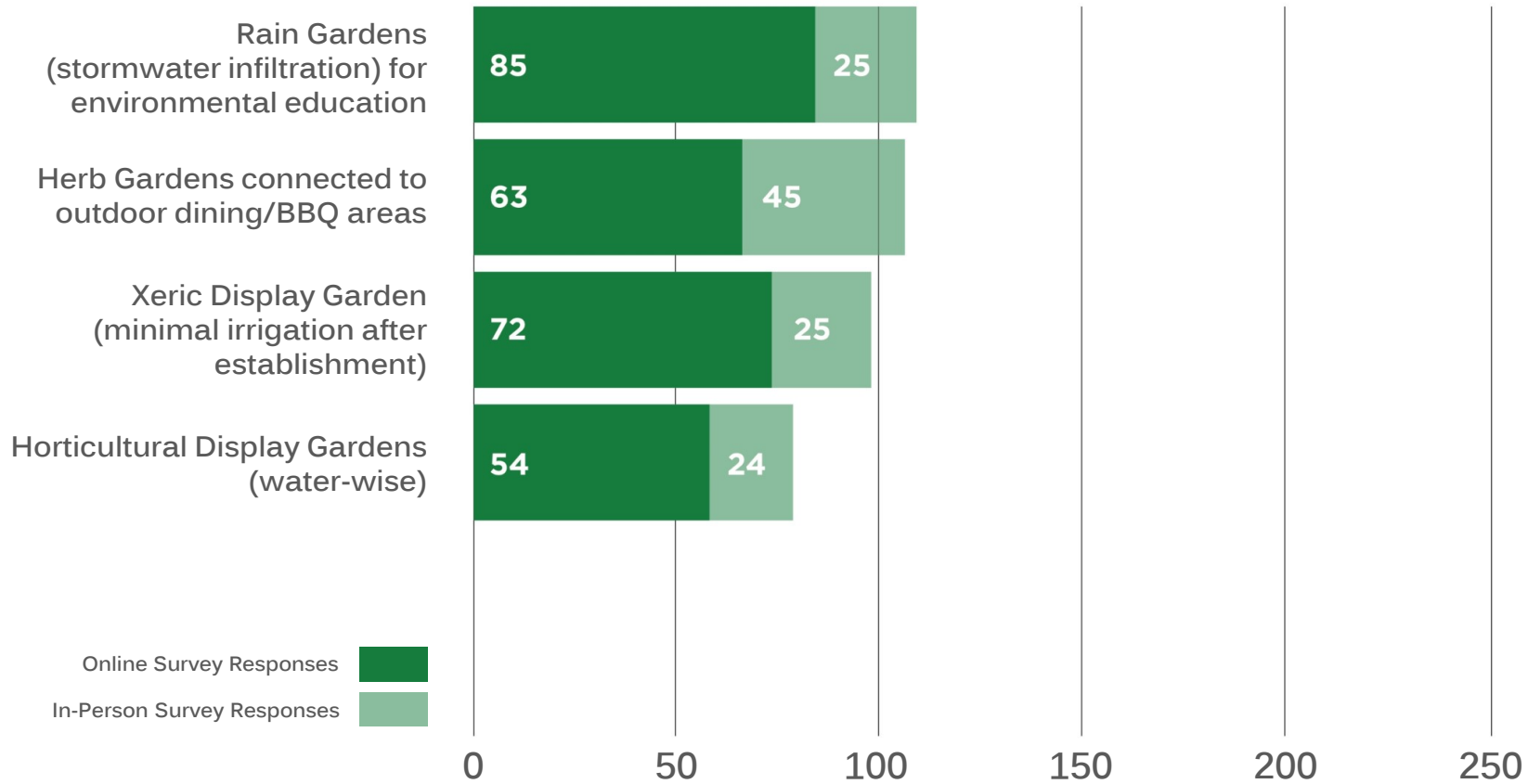
What type of gardens/landscape would you like at the park?



GARDENS

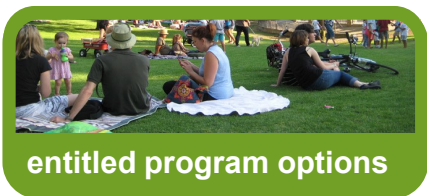
393 RESPONSES

What type of gardens/landscape would you like at the park?



SUPPLEMENTAL FEATURES

Let us know which **activities and features** you would like the park to include by marking the circles next to your **4 highest priorities** in each category. We appreciate your input.



entitled program options

multi-use lawn

- maximize open flat lawn
- increase tree-shading at edges
- integrate topography at edges
- integrate active park elements with lawn

children's play area

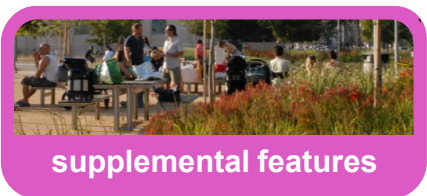
- equipment-based play
- themed play area
- environmental play

public art

- modest sculptures at park corners
- larger single integrated sculpture
- interactive art element

gardens within park

- herb garden at outdoor BBQ areas
- horticultural display garden
- xeric display garden
- rain garden – environmental education



supplemental features

- garden room / reading room
- tree-shaded grove
- bocce
- shuffleboard
- table tennis
- foosball
- climbing wall (low and safe for kids)
- walking loop
- movable furnishings
- communal fire feature
- community notice board
- write-in _____
- _____

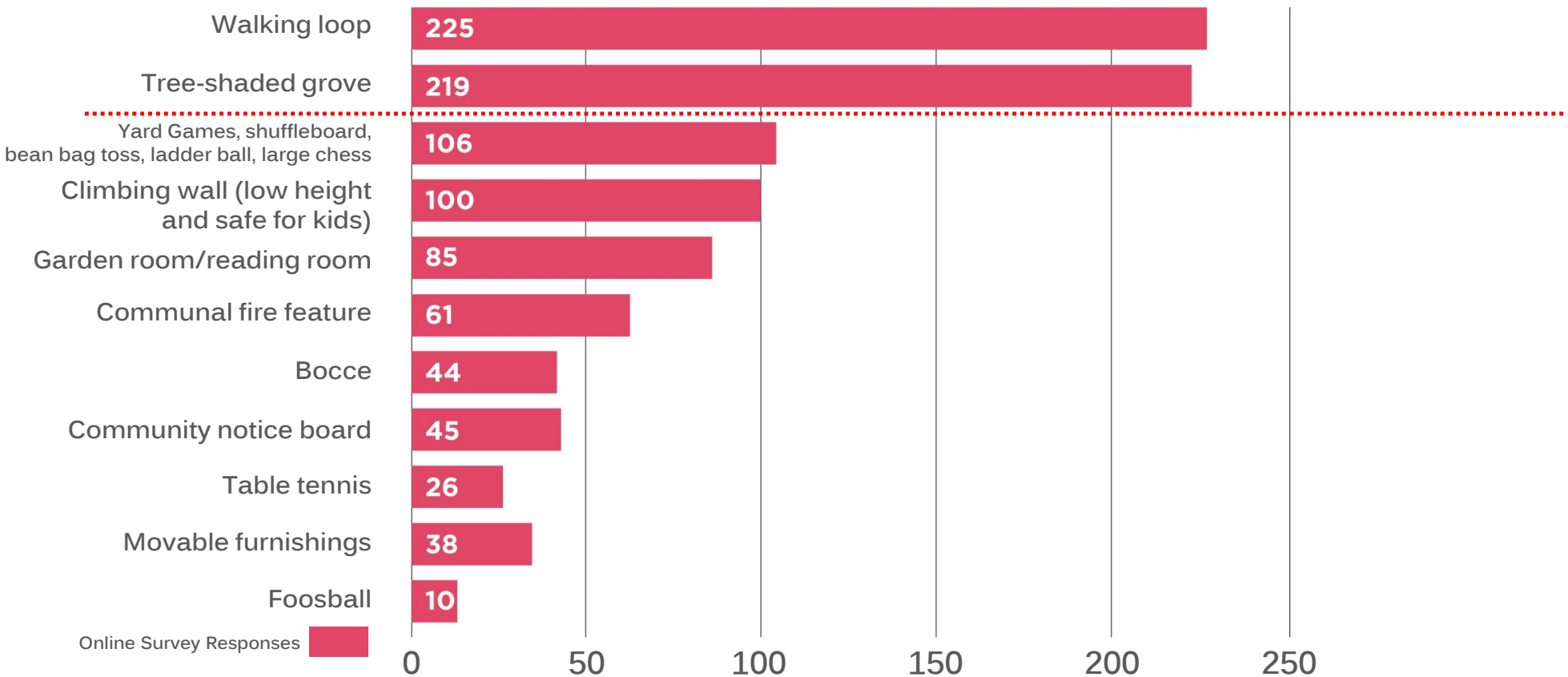


park activities

- quite relaxation or reading
- pickup sports
- fitness classes, tai chi, yoga (on lawn or deck)
- outdoor fitness with equipment
- performances
- food truck access
- outdoor cooking & dining (BBQ areas)
- dog walking & play
- activities for kids
- write-in _____
- _____

SUPPLEMENTAL FEATURES

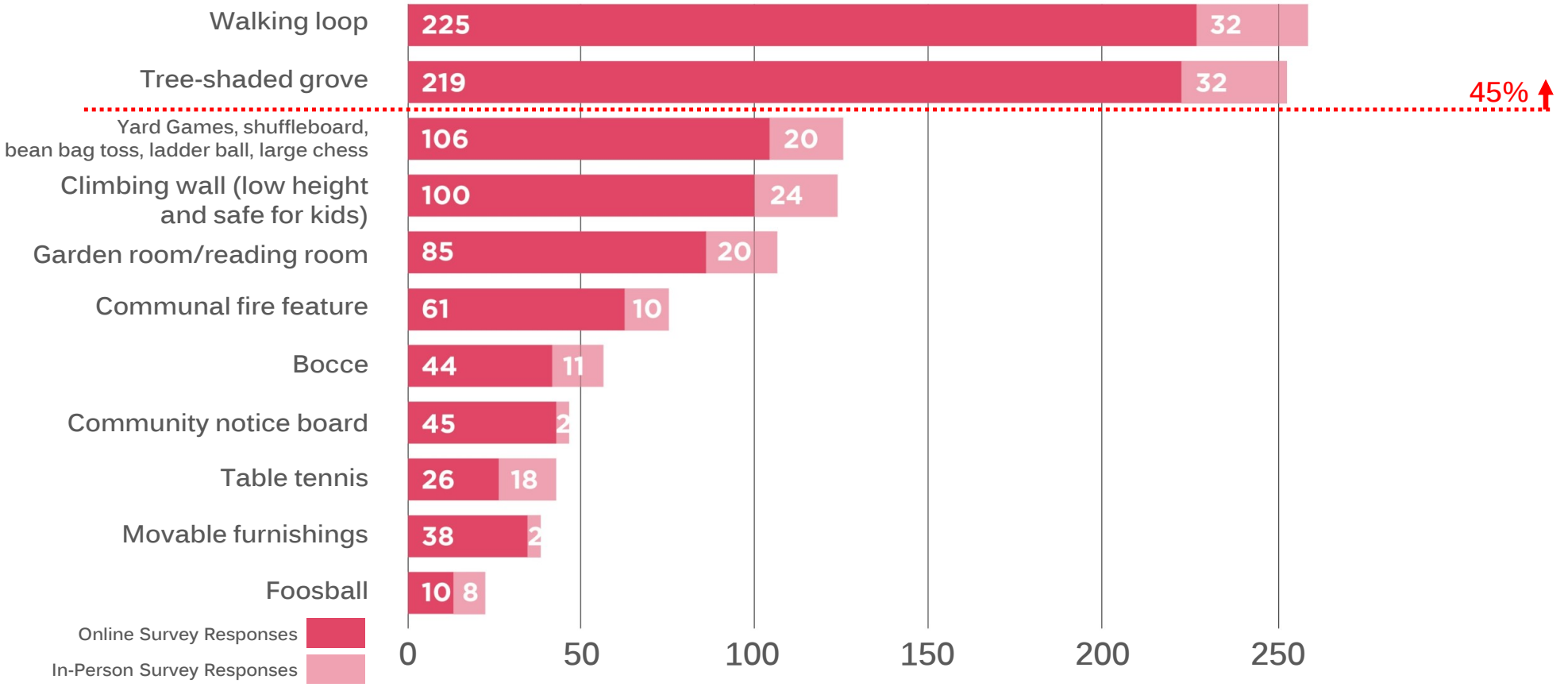
Below is a list of supplemental features that could be integrated into the park. Select up to 4 of your highest priorities.



SUPPLEMENTAL FEATURES

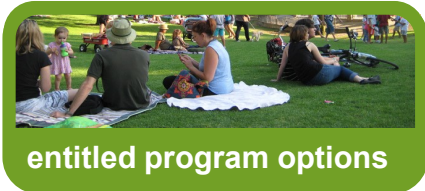
1138 VOTES

Below is a list of supplemental features that could be integrated into the park. Select up to 4 of your highest priorities.



PARK ACTIVITIES

Let us know which **activities and features** you would like the park to include by marking the circles next to your **4 highest priorities** in each category. We appreciate your input.



entitled program options

multi-use lawn

- maximize open flat lawn
- increase tree-shading at edges
- integrate topography at edges
- integrate active park elements with lawn

children’s play area

- equipment-based play
- themed play area
- environmental play

public art

- modest sculptures at park corners
- larger single integrated sculpture
- interactive art element

gardens within park

- herb garden at outdoor BBQ areas
- horticultural display garden
- xeric display garden
- rain garden – environmental education



supplemental features

- garden room / reading room
- tree-shaded grove
- bocce
- shuffleboard
- table tennis
- foosball
- climbing wall (low and safe for kids)
- walking loop
- movable furnishings
- communal fire feature
- community notice board
- write-in _____
- _____

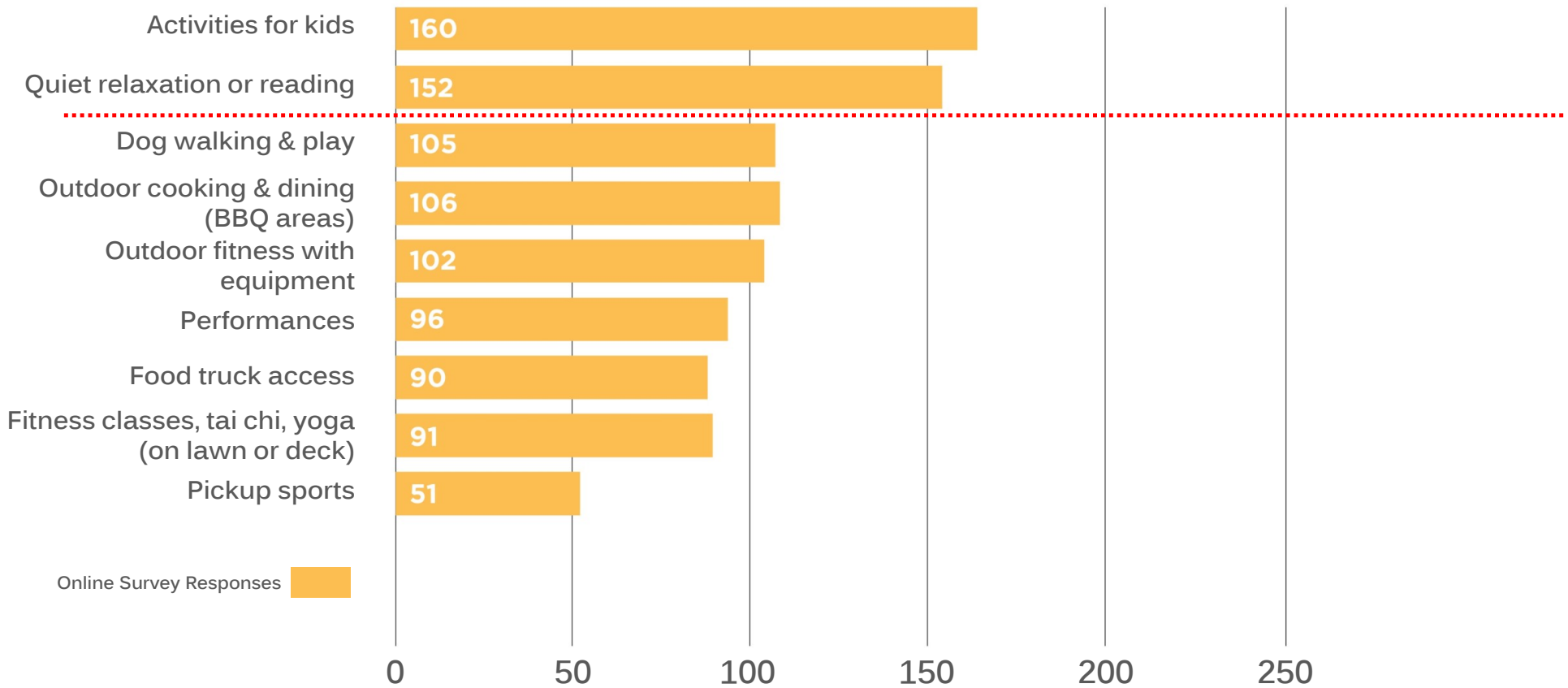


park activities

- quite relaxation or reading
- pickup sports
- fitness classes, tai chi, yoga (on lawn or deck)
- outdoor fitness with equipment
- performances
- food truck access
- outdoor cooking & dining (BBQ areas)
- dog walking & play
- activities for kids
- write-in _____
- _____

PARK ACTIVITIES

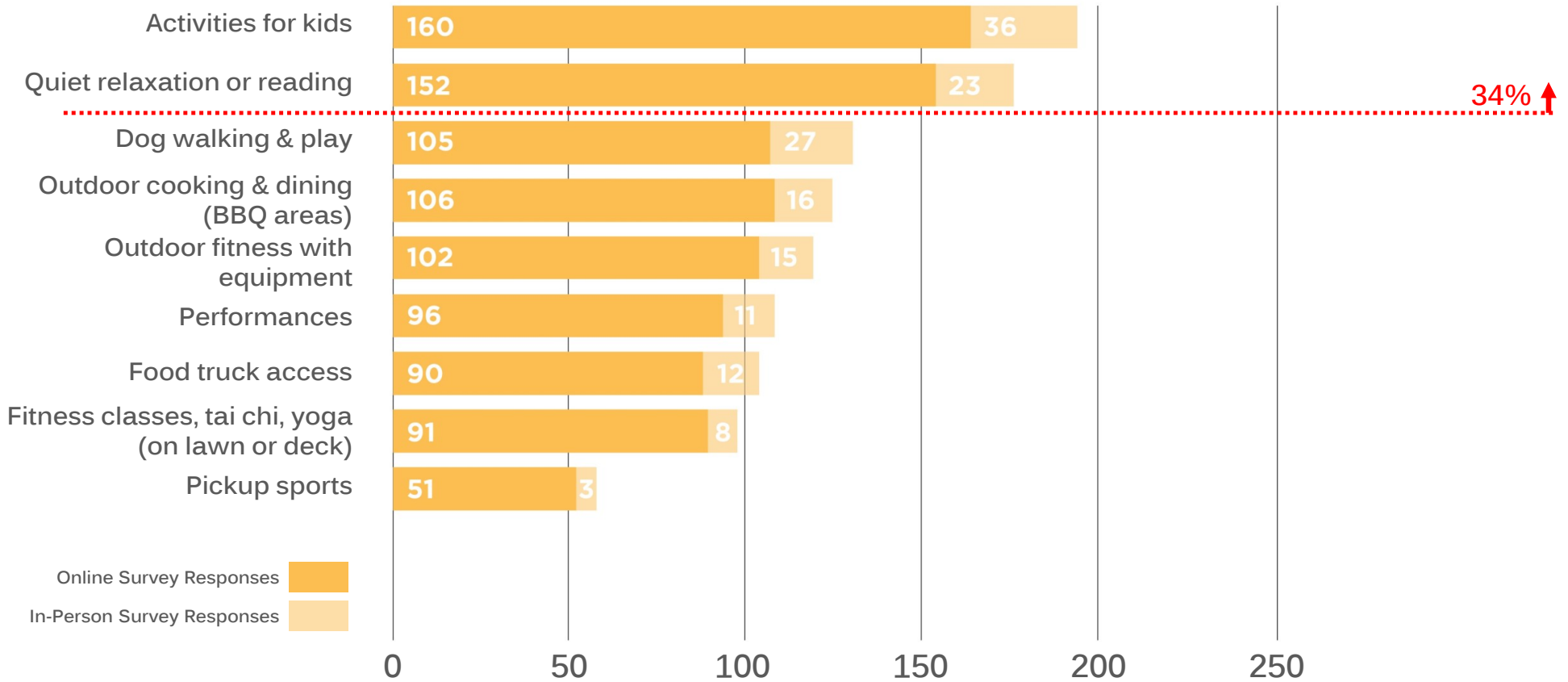
What are your top park activity priorities?
Select up to 4 of your highest priorities.



PARK ACTIVITIES

1104 VOTES

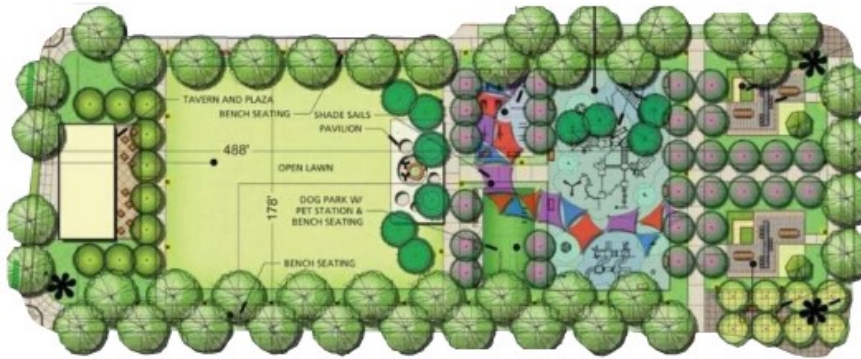
What are your top park activity priorities?
Select up to 4 of your highest priorities.



FORMAL vs. INFORMAL ORGANIZATION

FORMAL / RECTILINEAR ORGANIZATION

Example: Gateway Crossings Park 2019 Plan
2 Acres



47% PREFERRED

FORMAL
RECTILINEAR
SYMMETRICAL
AXIAL
GRIDED
PERIPHERAL CIRCULATION
USES COMPARTMENTALIZED

INFORMAL / ORGANIC ORGANIZATION

Example: Elizabeth Caruthers Park
2 Acres



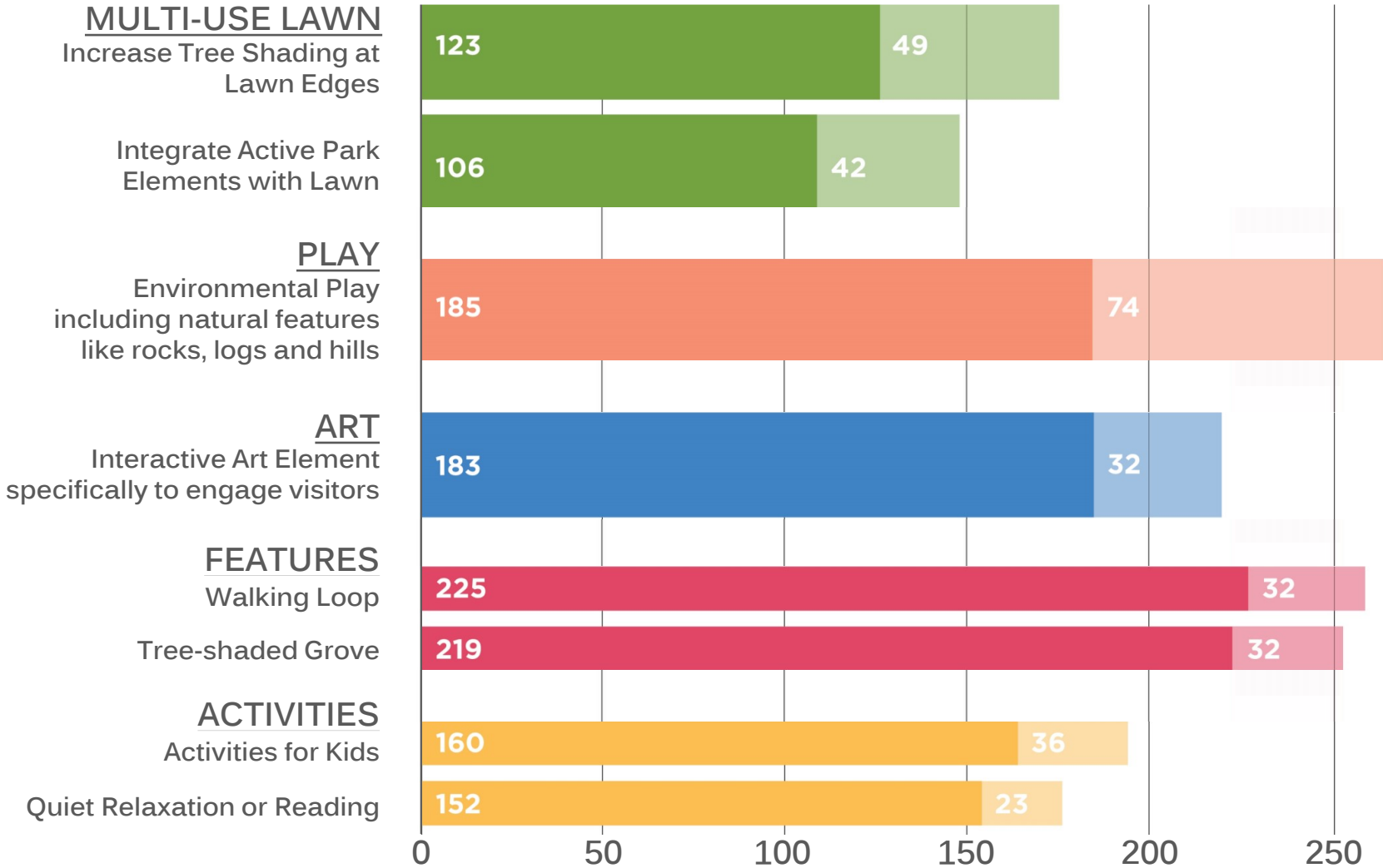
53% PREFERRED

INFORMAL
CURVILINEAR
BALANCED ASYMMETRY
NON-AXIAL
ACTIVE / FLOWING
INTERNAL CIRCULATION
MULTI-USE SPACES

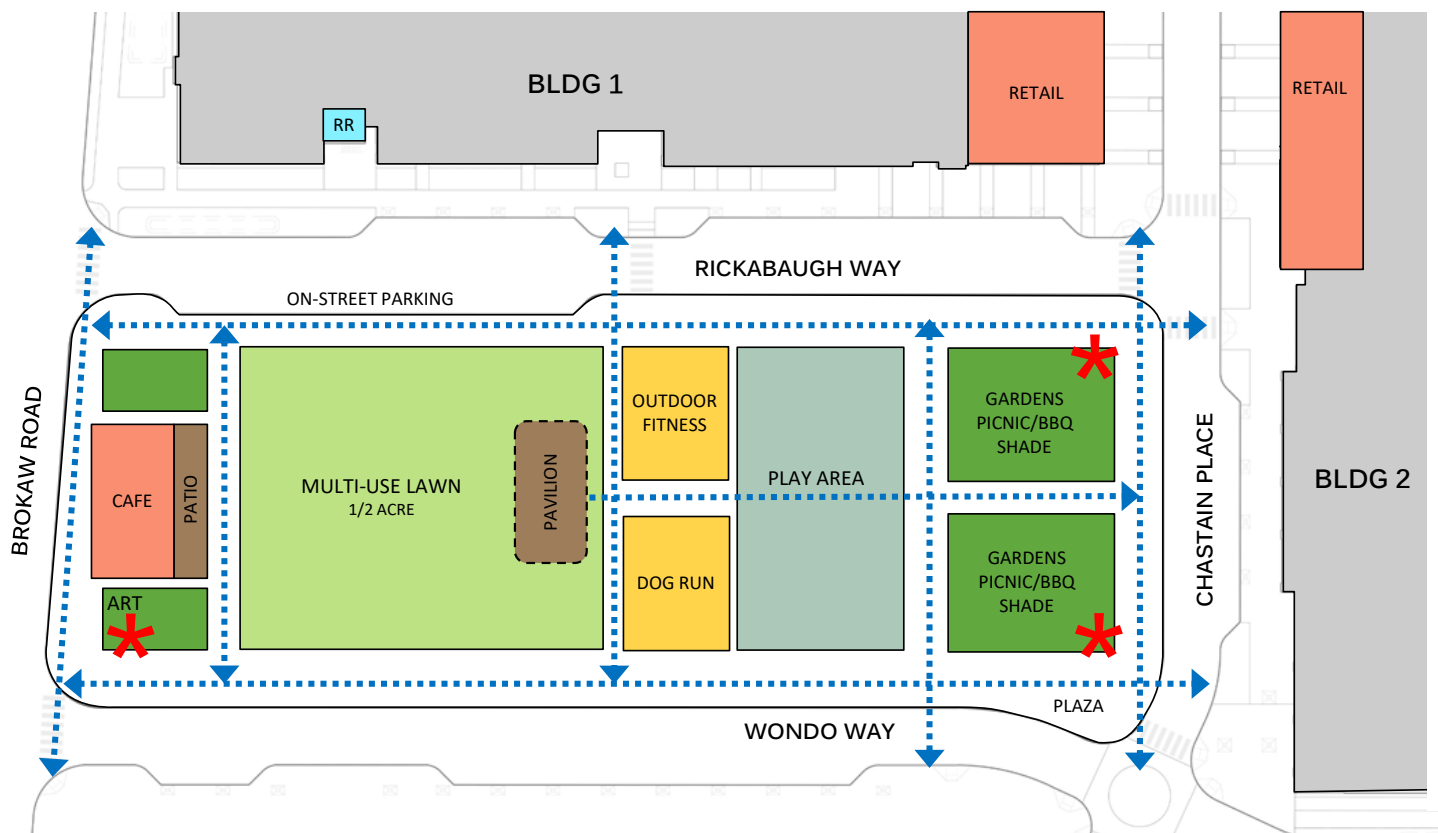
COMMUNITY PRIORITIES SUMMARY

COMMUNITY PRIORITIES

+/- 400 RESPONSES



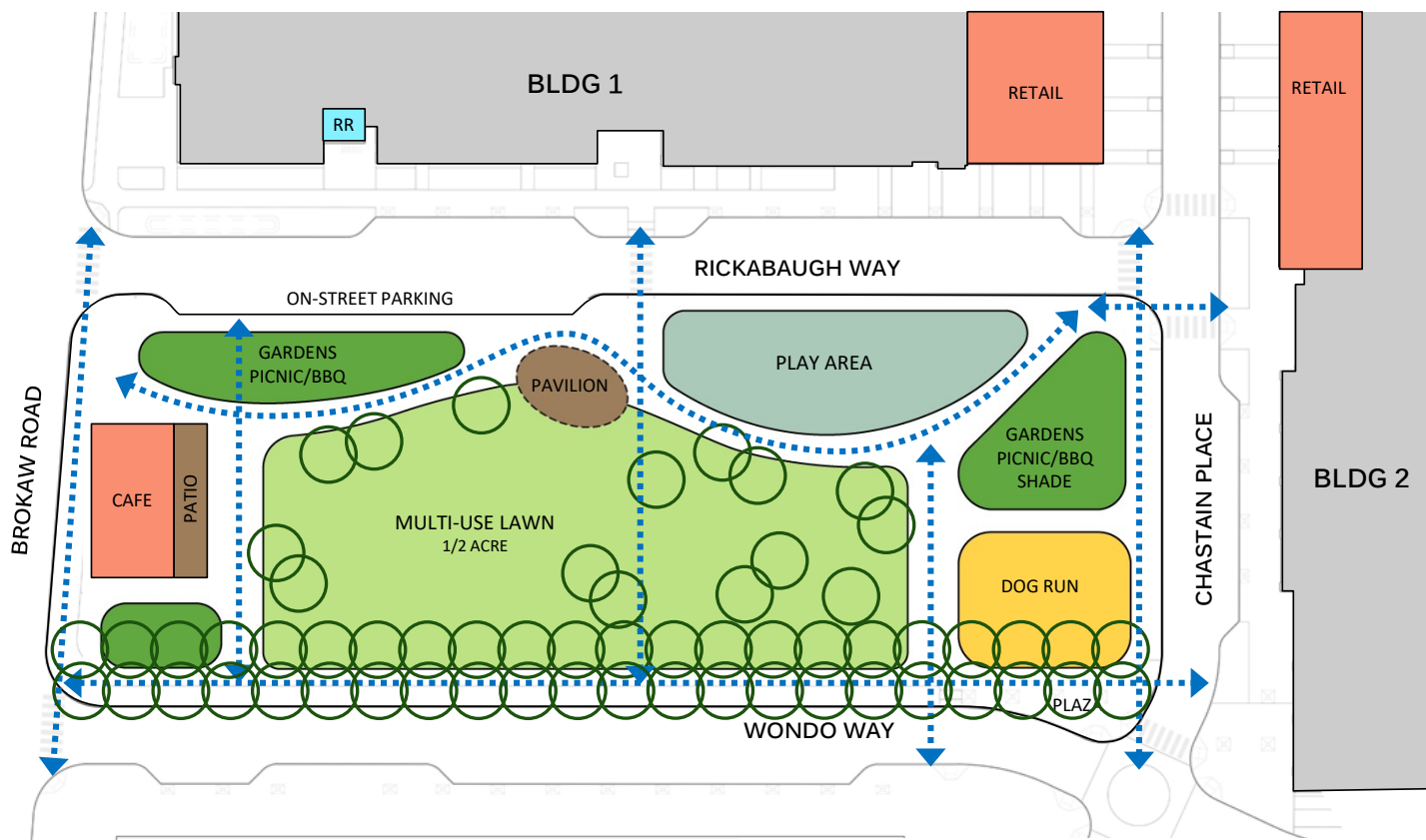
PROGRAM DIAGRAMS:
2 OPTIONS



2019 CONCEPTUAL PROGRAM

PHASE 2

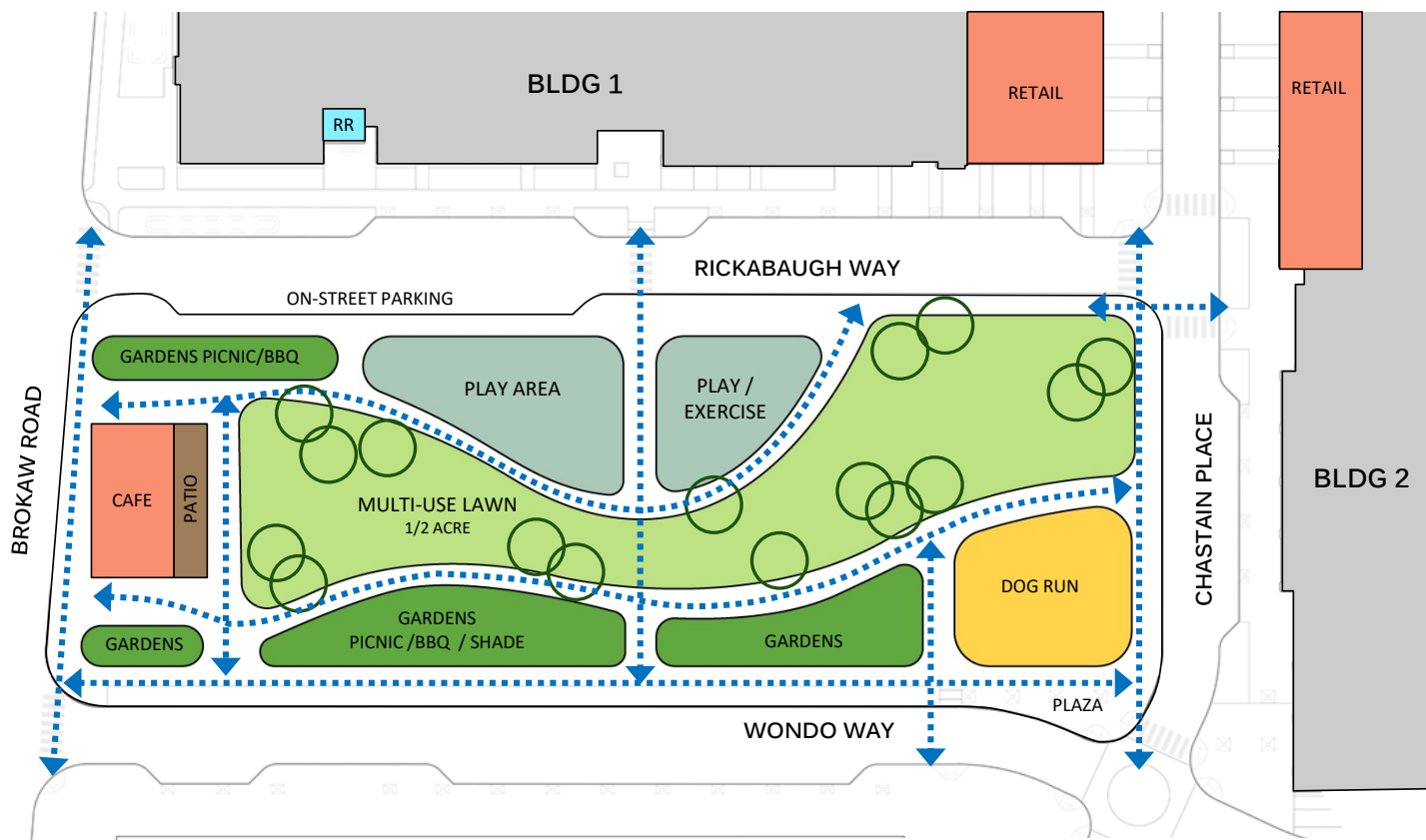




PHASE 2

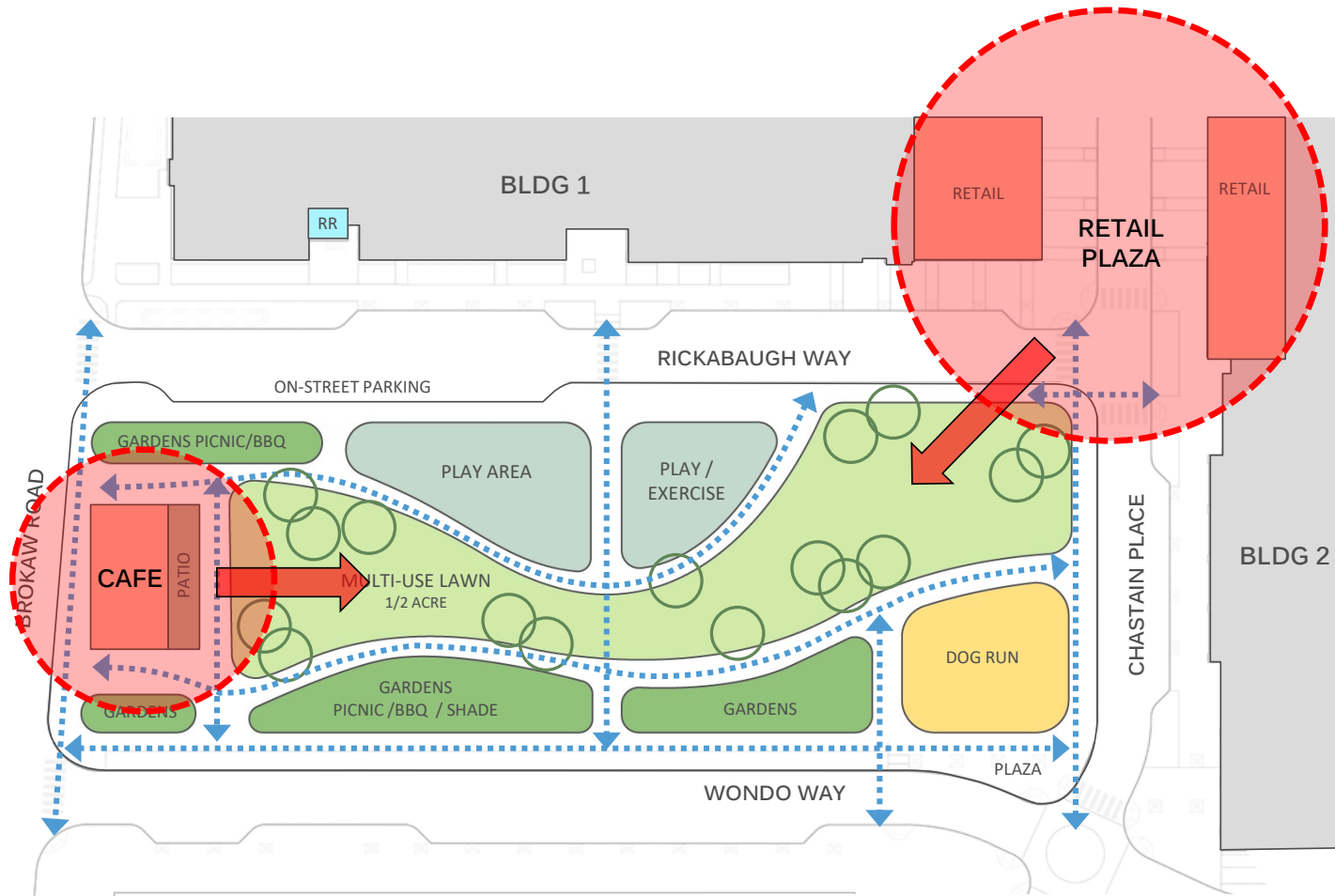
PROGRAM OPTION 1





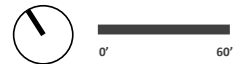
PROGRAM OPTION 2

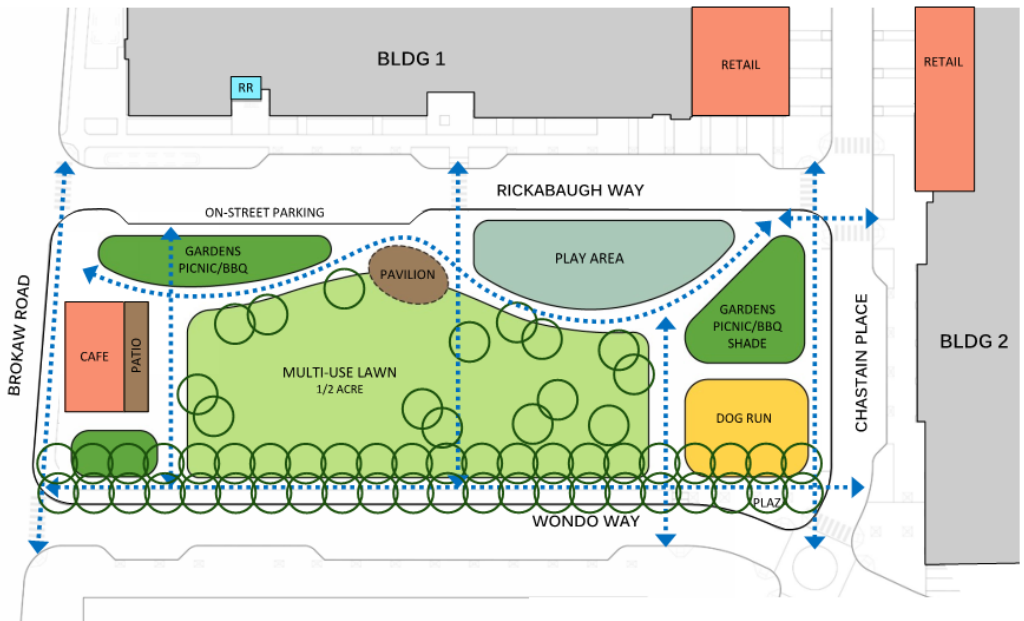




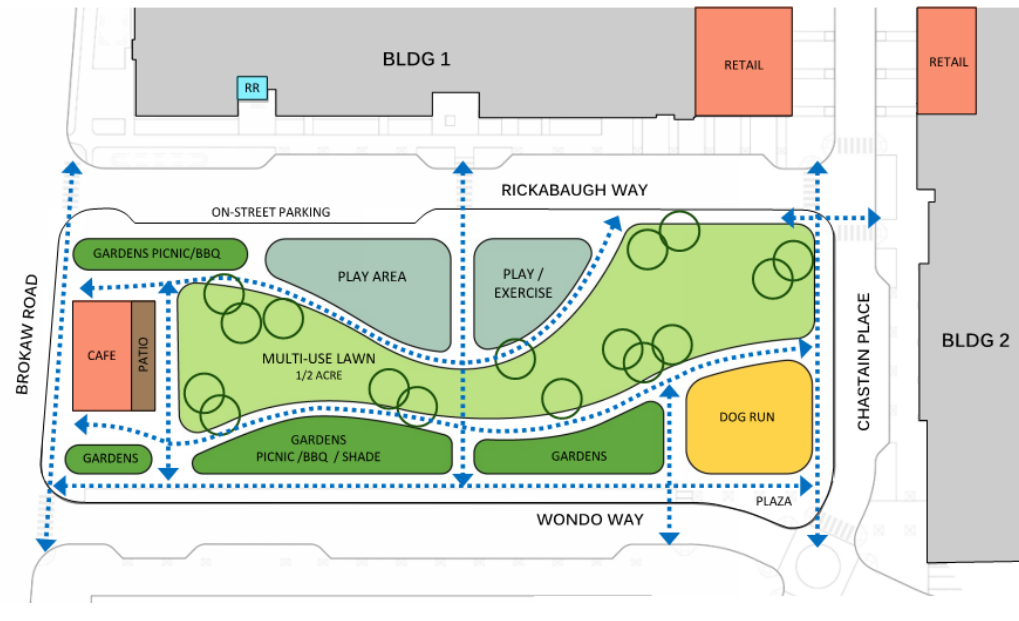
PROGRAM OPTION 2

PHASE 2





PROGRAM DIAGRAM
OPTION 1



PROGRAM DIAGRAM
OPTION 2



THANK YOU