



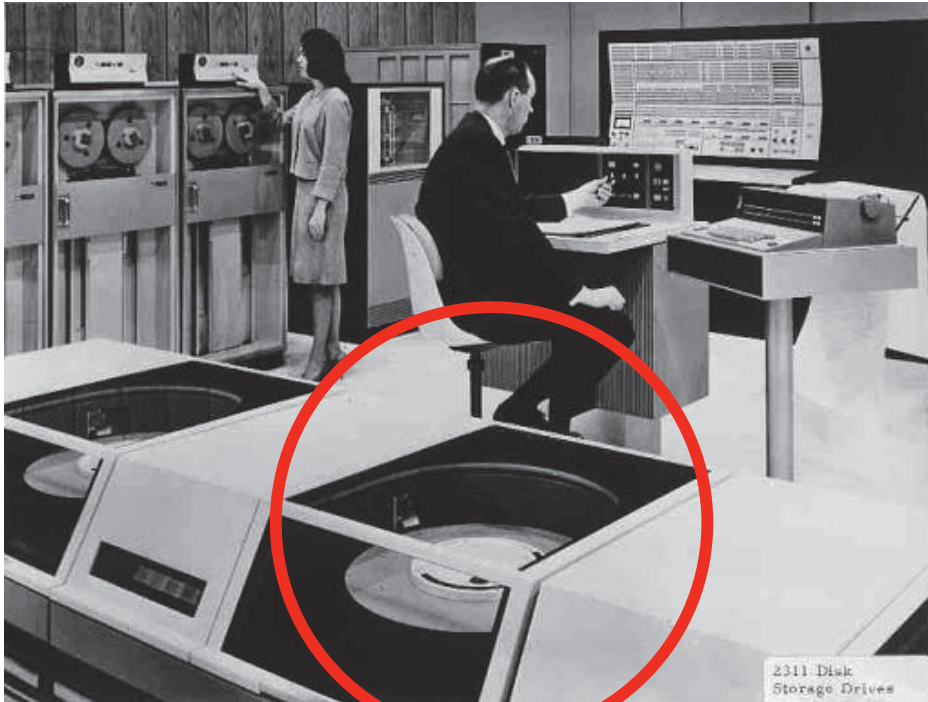
Memorex Campus

Innovation in Information Technology & Data Center Sectors

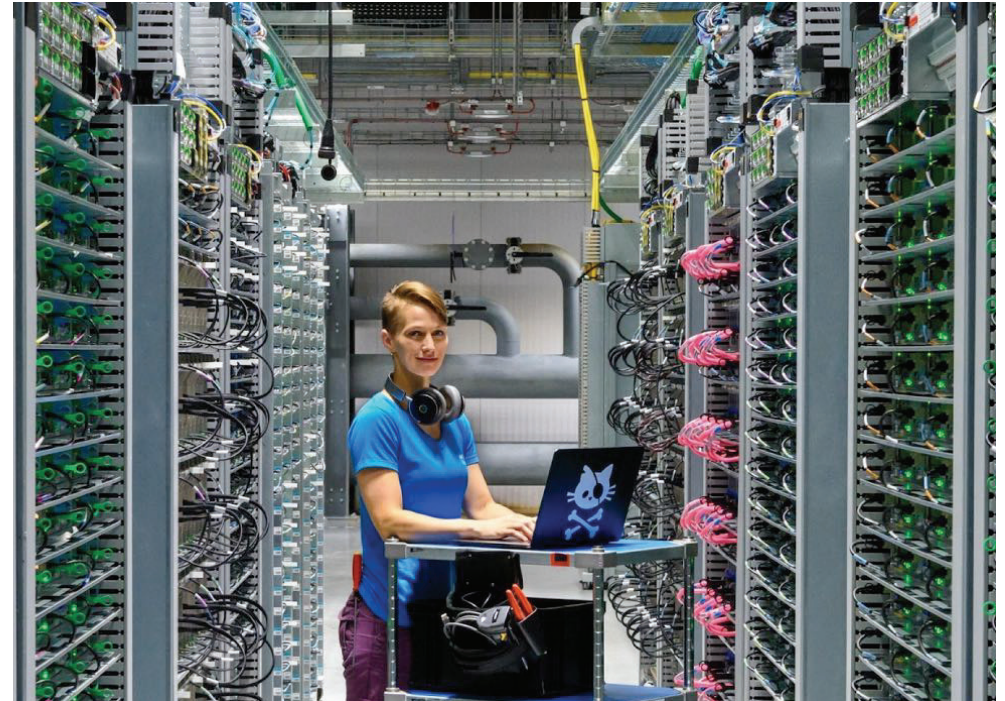




1964 Data Center



Modern Day Data Center



<https://www.google.com/about/datacenters/gallery/>



1953 - 1964



IBM 2311 Disk Storage Drive

MEMOREX

Founded 1961



Memorex pioneers assembled in front of this early company facility for a group photograph in 1961. The prototype for Memorex's first precision tape coating line was built in this building in Mountain View while the company's first plant was being built in Santa Clara.

Arnold
Chalman
(Founder)

Carl
Anderson

Larry
Noon
(Founder)



1953 - 1964

83% Market Share



MEMOREX

Founded 1961
Hard Drive 1968



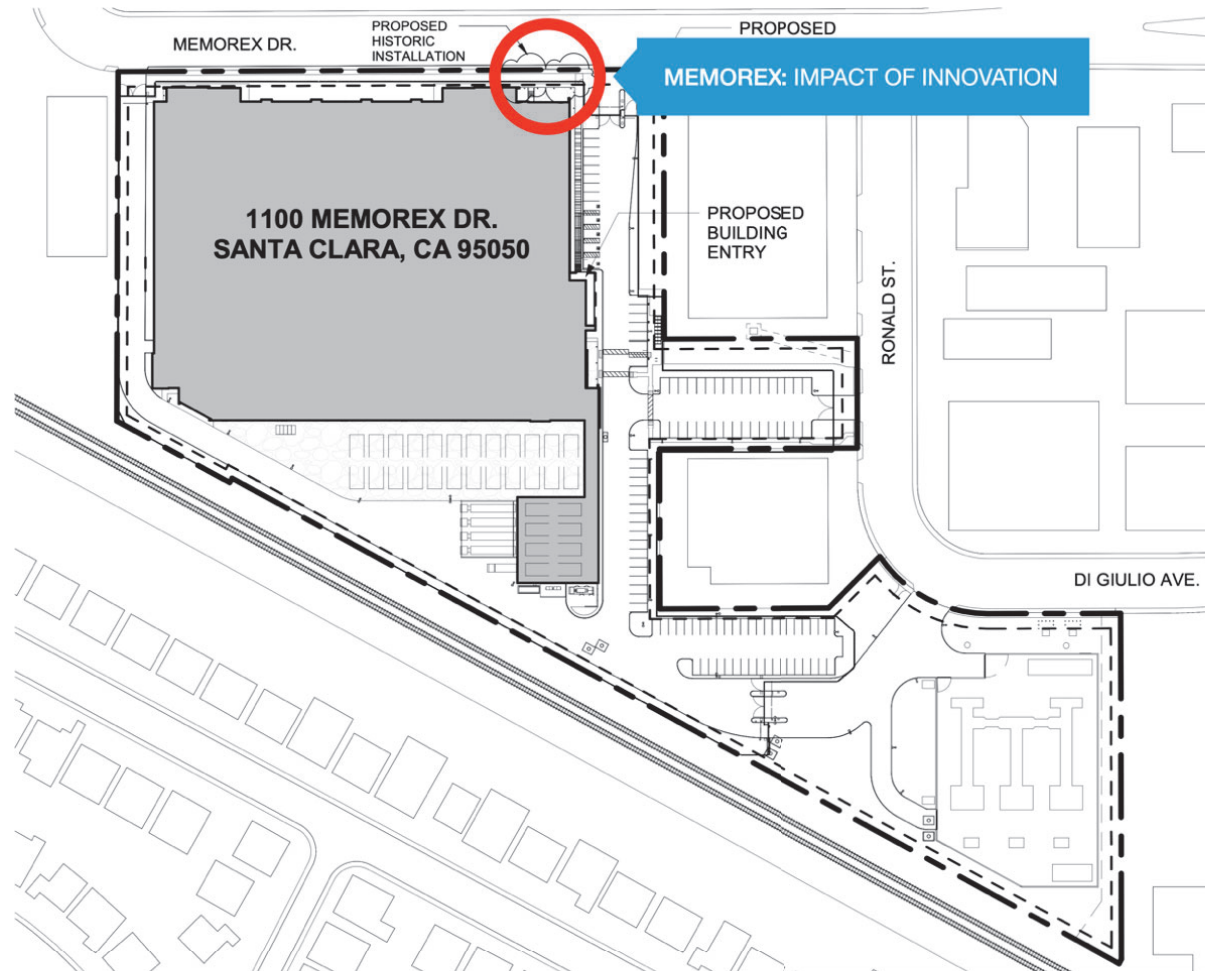
**Rapid Development &
New Competition**



**Lower Costs to Businesses,
Their Data Centers & Customers**

Project Mitigation:

- HABS Recordation
- Video Documentation
- Oral History Collection
- Interpretive Display



Project Number: 19110.0100



PROPOSED HISTORIC INSTALLATION

1" = 100'-0"
06.29.2021

CORGAN



MEMOREX: IMPACT OF INNOVATION