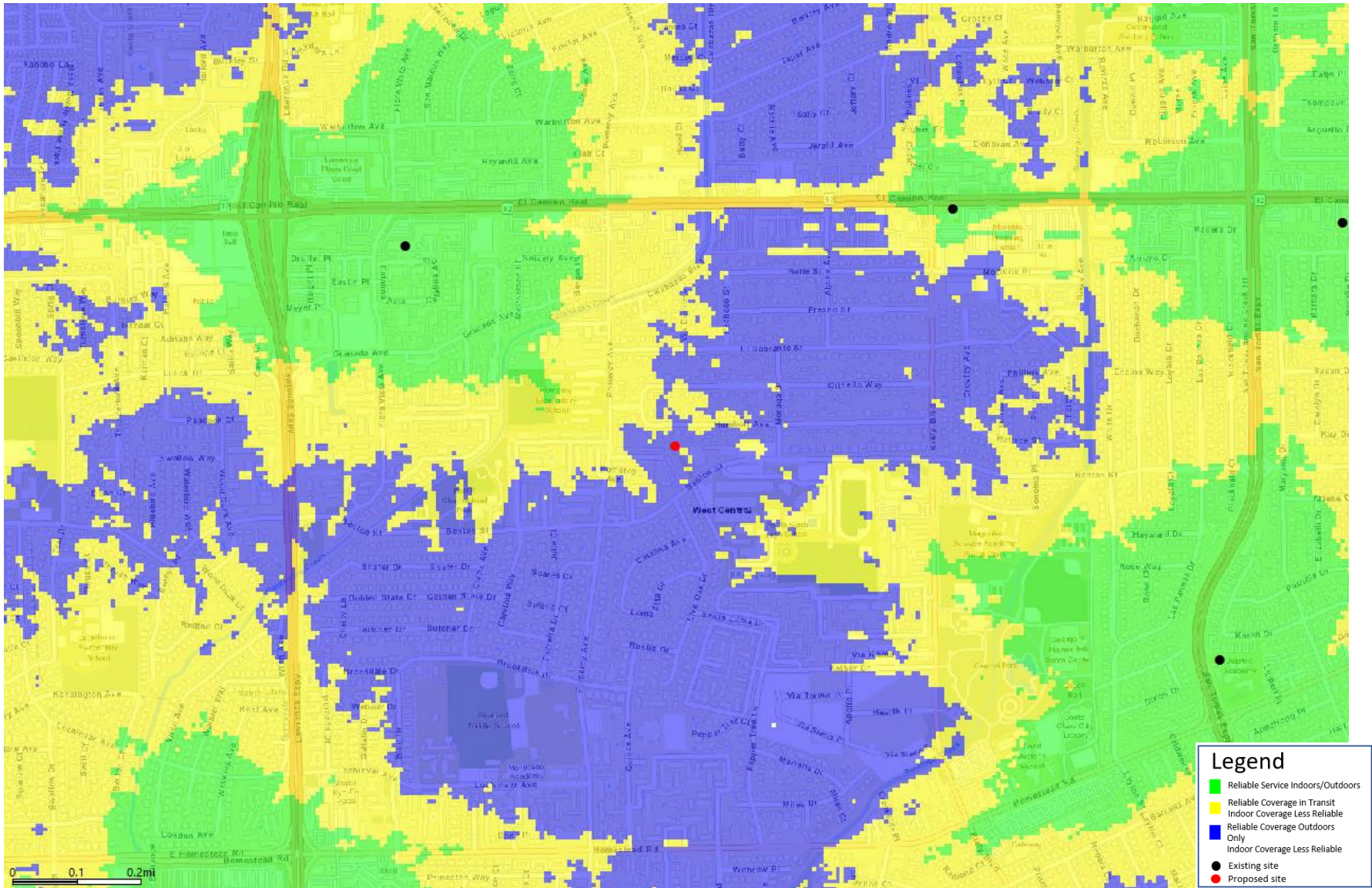


# CCL06126 Propagation Map

December 13, 2023



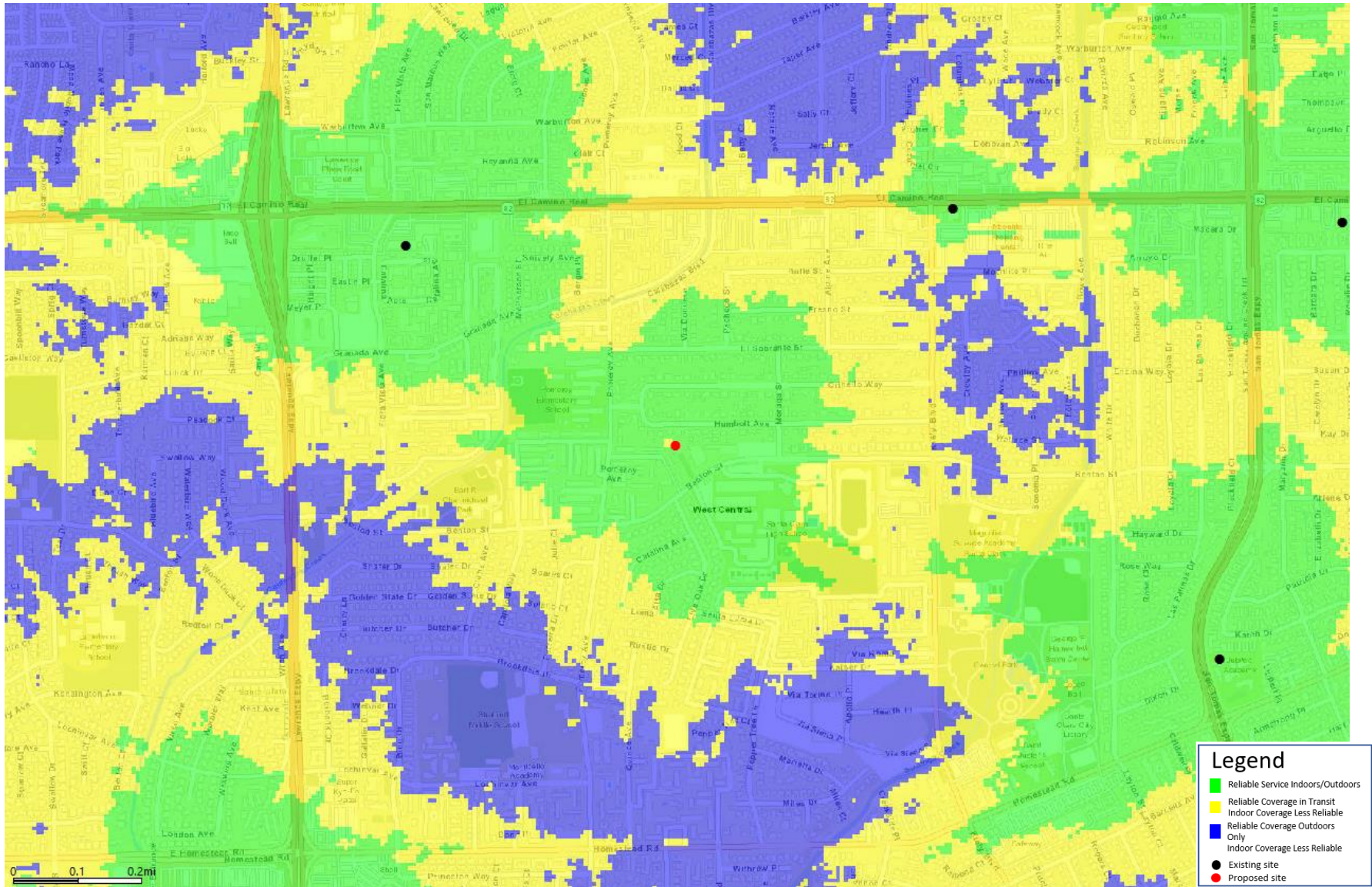
# Existing Sites LTE 700 Coverage



"AT&T PROPRIETARY -- This information constitutes confidential trade secrets and commercial or financial information owned by AT&T and is shared for Critical Infrastructure Protection purposes only. It is exempt from disclosure under the Freedom of Information Act (5 U.S.C. 552), Exemptions (b)(3)&(4), and its disclosure is prohibited under the Trade Secrets Act (18 U.S.C. 1905), the Critical Infrastructure Information Act of 2002, 5 U.S.C. § 133, and any state or local law requiring disclosure of information or records. This information must not be copied (whether mechanically or electronically through screen shots or other recording) or distributed to others not agreed upon by AT&T, but in all events do not copy or distribute to such others without notification pursuant to Executive Order 12600."



# Existing Sites + CCL06126 LTE 700 Coverage



"AT&T PROPRIETARY -- This information constitutes confidential trade secrets and commercial or financial information owned by AT&T and is shared for Critical Infrastructure Protection purposes only. It is exempt from disclosure under the Freedom of Information Act (5 U.S.C. 552), Exemptions (b)(3)&(4), and its disclosure is prohibited under the Trade Secrets Act (18 U.S.C. 1905), the Critical Infrastructure Information Act of 2002, 5 U.S.C. § 133, and any state or local law requiring disclosure of information or records. This information must not be copied (whether mechanically or electronically through screen shots or other recording) or distributed to others not agreed upon by AT&T, but in all events do not copy or distribute to such others without notification pursuant to Executive Order 12600."

