




**City Council**

**Item No. 1, RTC 25-1525**  
**Study Session on New**  
**Traffic Signal at Great**  
**America Parkway and**  
**Hichborn Drive**

**December 16, 2025**

1



**City of Santa Clara**  
The Center of What's Possible

## **Agenda**

- Background
- Project Traffic Impacts
- Project Traffic Improvement – New Traffic Signal
- Traffic Operation Simulations with New Signal and Freedom Circle Build-Out Condition
- Stadium Event Operations
- Summary

2



## Background

- June 7, 2022 - Council approved the Freedom Circle Focus Area Plan, which identifies a new signal at Great America Parkway (GAP) and Hichborn Drive to support higher-intensity development in the area.
- March 25, 2025 - Council approved the Irvine Company residential apartment community project at 2518 Mission College Boulevard.
  - 1,792 residential units & 3,500 square feet of retail

3

3



## Background

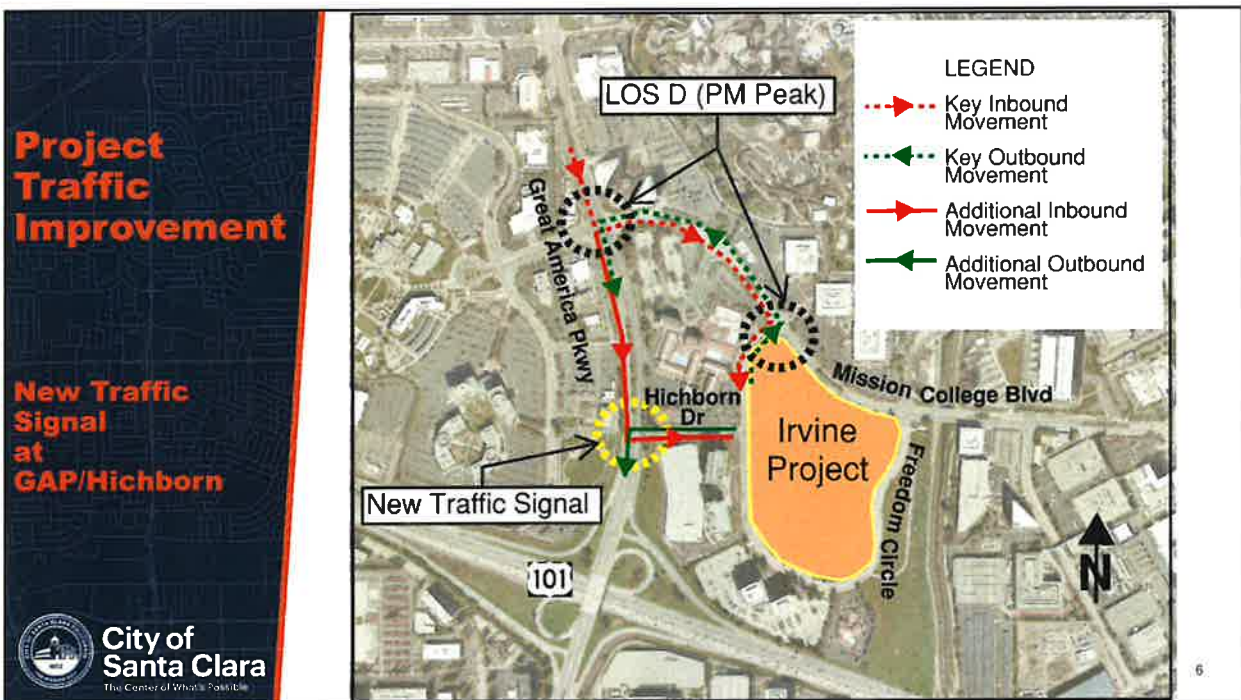
- Project transportation operations analysis, while not part of CEQA requirements, determined a signal at GAP/Hichborn Dr. as necessary to address project-related traffic impacts.
  - LOS F, PM Peak, GAP/Mission College Blvd.
  - LOS F, PM Peak, Mission College Blvd./Freedom Circle (West)
- Study Session to review area traffic circulation with new signal.

4

4



5



6



## Conditions with New Traffic Signal

- Great America Parkway at Mission College Boulevard
  - PM Peak from LOS F to D
- Mission College Boulevard at Freedom Circle
  - PM Peak from LOS F to D

7

7



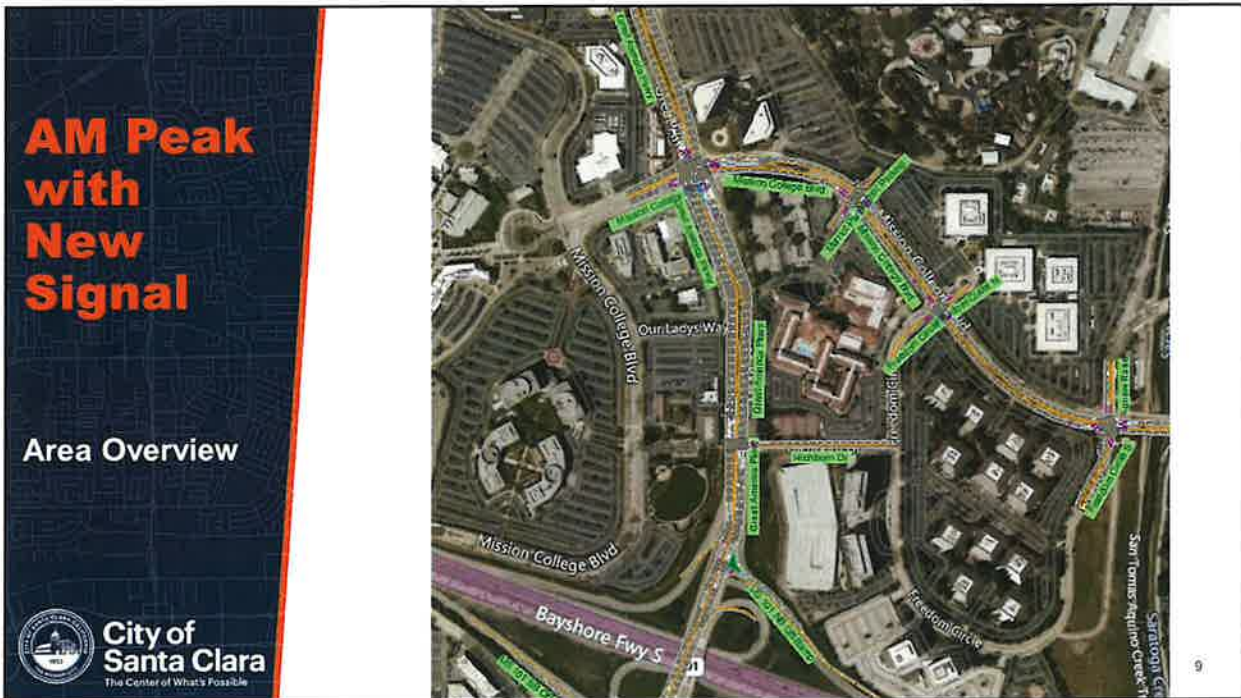
## Traffic Operation Simulations

- New GAP/Hichborn signal
  - AM and PM peak hour scenarios
- Freedom Circle Build-Out traffic volumes at GAP/Hichborn
  - AM and PM peak-hour scenarios

8

8





9



10



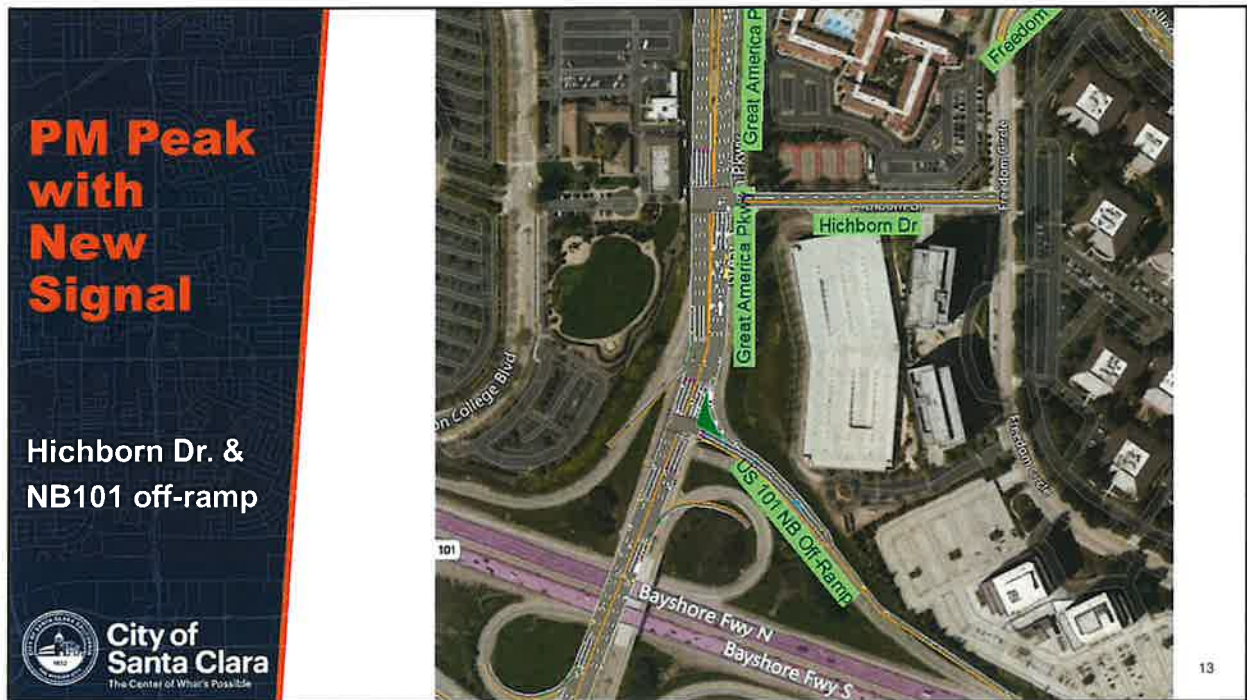


11



12



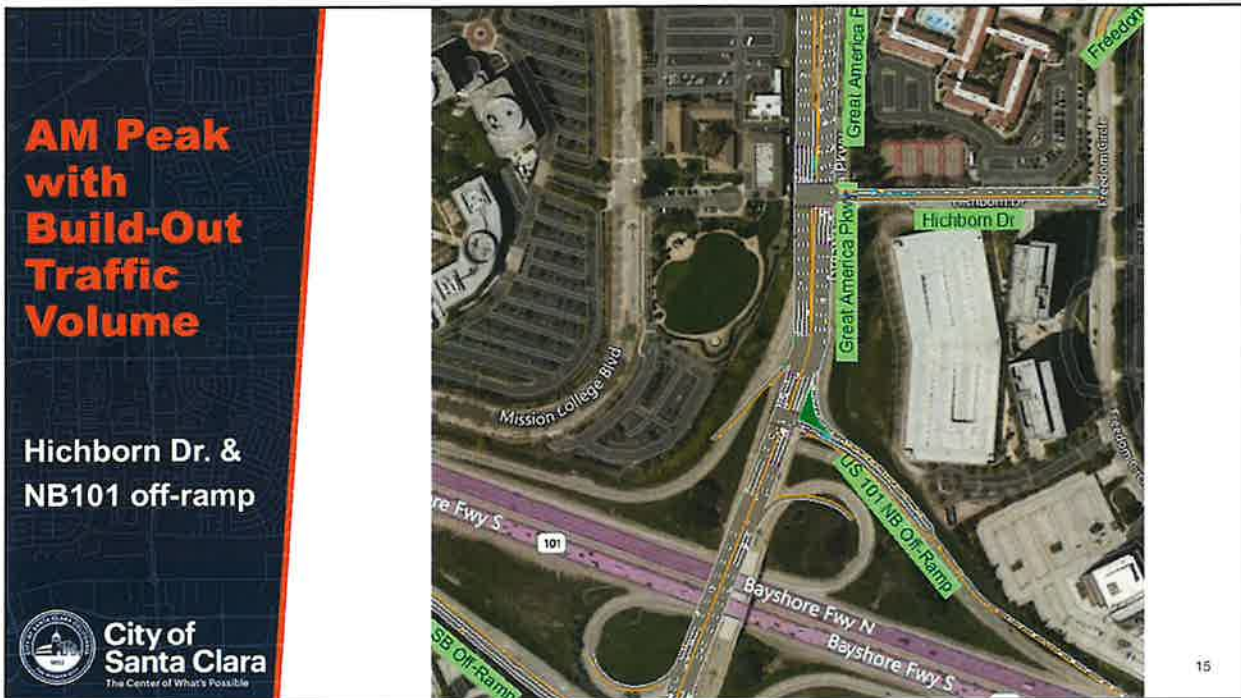


13

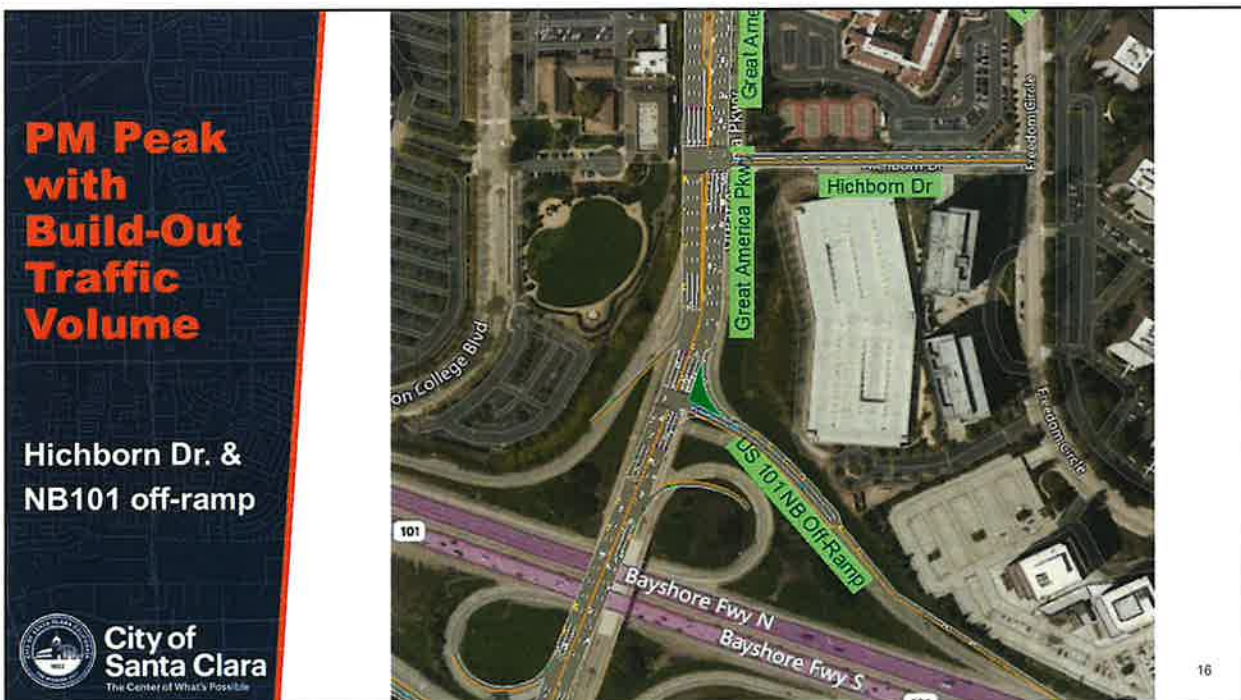


14



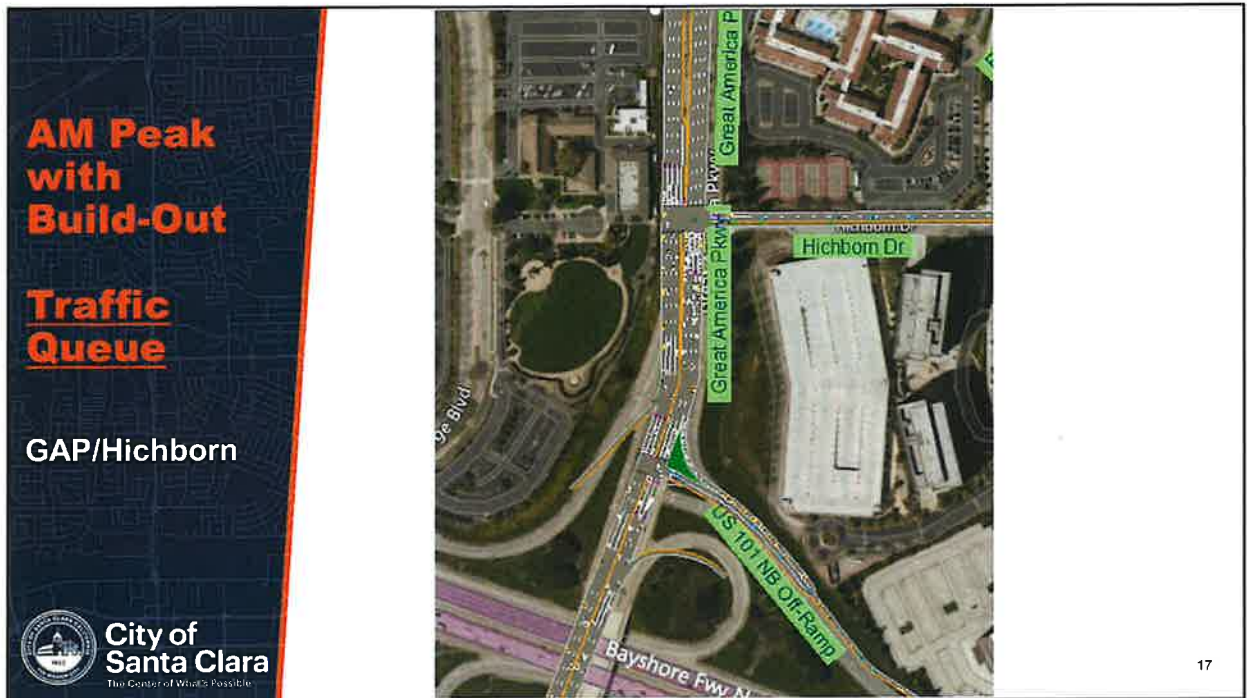


15

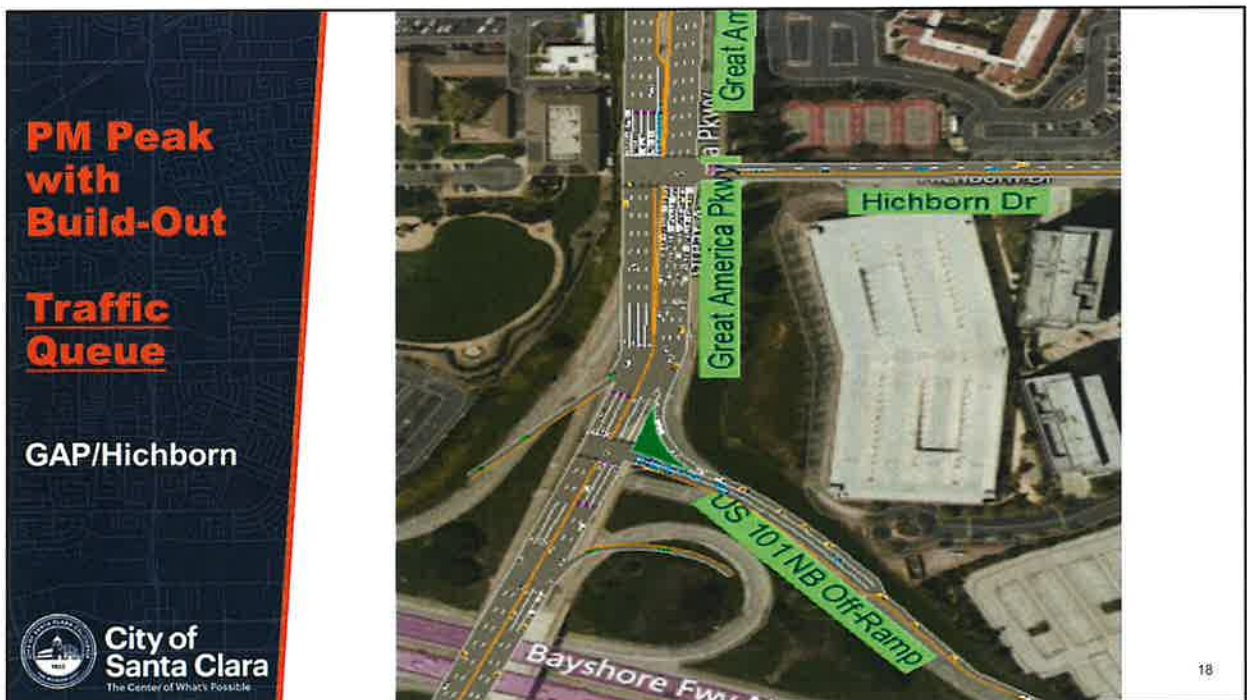


16





17



18



## Stadium Event Operations

- Prioritize stadium ingress/egress traffic along GAP.
- Electronic message boards advise public to use alternate routes.
- Ingress traffic spread over multiple hours to lessen congestion.
- Egress focuses on moving traffic away from the stadium.
- Minor traffic movements are temporarily closed during egress.
- Hichborn Drive movements at GAP to be closed during events.

19

19



## Stadium Event Egress Operations

GAP@PATRICK HENRY2 2025-10-19 21:19:50

Great America @ Tasman

10/19/2025 18:08:33



20

20





## Summary

- GAP/Hichborn Dr. traffic signal is an improvement identified in both:
  - Freedom Circle Focus Area Plan
  - Irvine Project Transportation Operations Analysis
- New traffic signal
  - Alternative access route for area traffic
  - Relieves congestion at surrounding intersections
- No adverse traffic impacts are anticipated from the new signal installation.

21

21



## Questions/Comments

22

22

The seal of the City of Santa Clara, California, is circular. It features a central illustration of a mission-style building with a red roof and a bell tower, set against a blue sky with clouds and green grass. The year "1852" is prominently displayed in the center. The outer ring of the seal contains the text "CITY OF SANTA CLARA CALIFORNIA" at the top and "THE MISSION CITY" at the bottom.

**City Council**

**Item No. 1, RTC 25-1525**  
**Study Session on New**  
**Traffic Signal at Great**  
**America Parkway and**  
**Hichborn Drive**

**December 16, 2025**