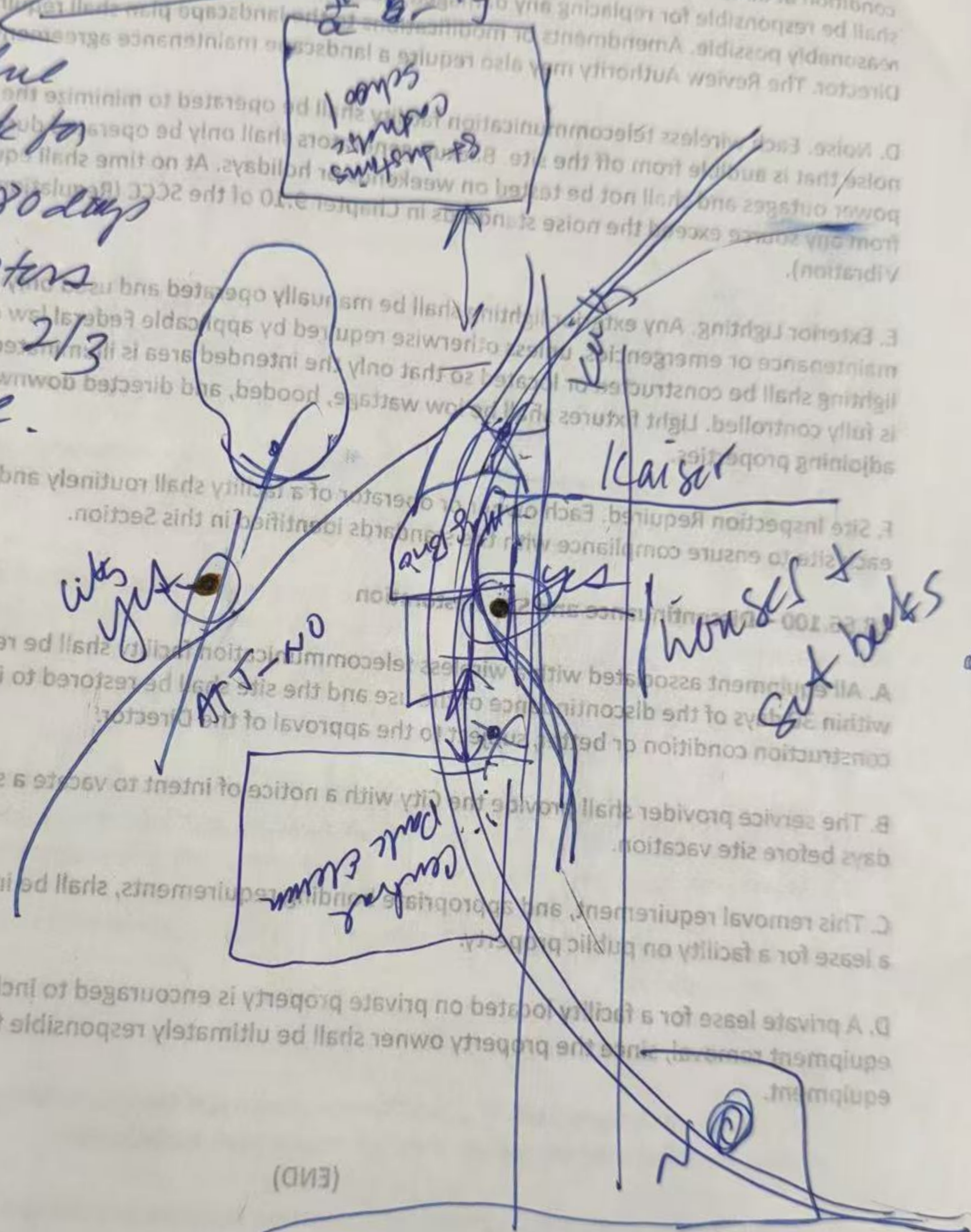


1 layer - cell coverage needs and park space available

2 layer - SCC Charter #714
City of Berkeley

any structural built on park for more than 180 days must go to voters and receive 2/3 majority vote.



(END)

Bunker

+

|| ? ||



Map data ©2024 Google 200 ft



Staff Parking
ONLY
Monday thru Saturday
Sundays Excepted
Per Month Fee: 17-76
Must Show All Markings On City Property

FIRE LANE - NO PARKING

FIRE LANE - NO PARKING



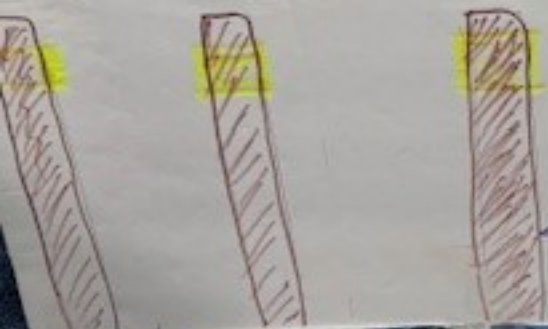




Memorial
Picnic Area
for Jack
to
Honor

m unconditionally OPPOSED.....

300 feet for Residential zone.
How many feet from Cell Tower
in public zone to nearby Residential
House? 15 or 50 feet are too Close.



← Three 42 feet or One 60 feet →



* Public zone need Vote

* Church needs Vote,
too ???

* Identify
Church zoned.

