



Parks & Recreation Commission Meeting

**25-637. Item #2. Action on the
Proposed Schematic Design for the
New Public Park at 2518 Mission
College Boulevard.**

July 14, 2025



Background

- A total of 10.323 acres of parkland is required to mitigate the impact of the project's new residents.
- The developer will satisfy the parkland dedication requirement through a combination of:
 - Construction, dedication, and maintenance of a 4.225-acre neighborhood park;
 - Provision of 4.223 acres of private recreational amenities; and
 - Payment of a fee due in-lieu for the remaining parkland obligation.



Discussion

- The conceptual design was shared with the public:
 - Through an online survey (open for just over two (2) weeks)
 - At a community engagement session during the City's 4th of July celebration at Mission College.
- Tonight's presentation focuses on how the park design responds to:
 - Input from the public survey
 - Feedback from the community event



Site Context



Public Parkland and Private Amenity Spaces



PARK CREDIT LEGEND

	PUBLIC OPEN SPACE - 100% CREDIT
	NEIGHBORHOOD PARK 4.225 AC (184,041 S.F.)
	SUBTOTAL 4.225 AC *
	PRIVATE OPEN SPACE - 50% CREDIT
	(REFER TO THE ITEMIZED PRIVATE OPEN SPACE BREAKDOWN BELOW)
	PER CITY OF SANTA CLARA, THE FOLLOWING (4) ELEMENTS WILL BE PROVIDED WITHIN THE PRIVATE PARK AREAS:
	- LANDSCAPED & FURNISHED AREAS
	- PICNIC AREAS
	- POOL AREAS
	- FITNESS AND GAME AREAS
	SUBTOTAL 4.222 AC *
	50% CREDIT x 4.222 AC = 2.111 AC *
	PRIVATE BUILDING AMENITY SPACES - 50% CREDIT
	FITNESS
	SUBTOTAL 0.17 AC (7,200 S.F.)
	50% CREDIT x 0.17 AC = 0.085 AC
	LANDSCAPE SETBACK / BUFFER ZONE - NO CREDIT
	TOTAL PARKS AND PRIVATE OPEN SPACE
	4.225 AC + 4.222 AC = 8.447 AC
	TOTAL PARK CREDIT AREA (PUBLIC + PRIVATE)
	4.225 AC + 2.111 AC = 6.336 AC *

NOTE:

* Public and Private area calculations are estimates at this time.

Final calculations are to be determined with the final design and is subject to Park Department confirmation.

Conceptual Park Design



Elements of Play	Ages 2-5		Ages 6-12		Total Playground Capacity
	Play	Capacity (Ages 2-5)	Play	Capacity (Ages 6-12)	
Balancing	✓	1-2	✓	1-2	24
Sliding	✓	1-2	✓	1-2	24
Branching	✓	1-2	✓	1-2	24
Spinning	✓	1-2	✓	1-2	24
Climbing	✓	1-2	✓	1-2	24
Swinging	✓	1-2	✓	1-2	24
Running / Free Play	✓	1-2	✓	1-2	24
Total:		7-14		7-14	14-28
Inclusive Play Elements	✓	1-2	✓	1-2	24

NOTE:
 - Elements of Play, Equipment and Capacity pending final design review and approval.
 - More detailed information to be provided through the public input design review and approval process.

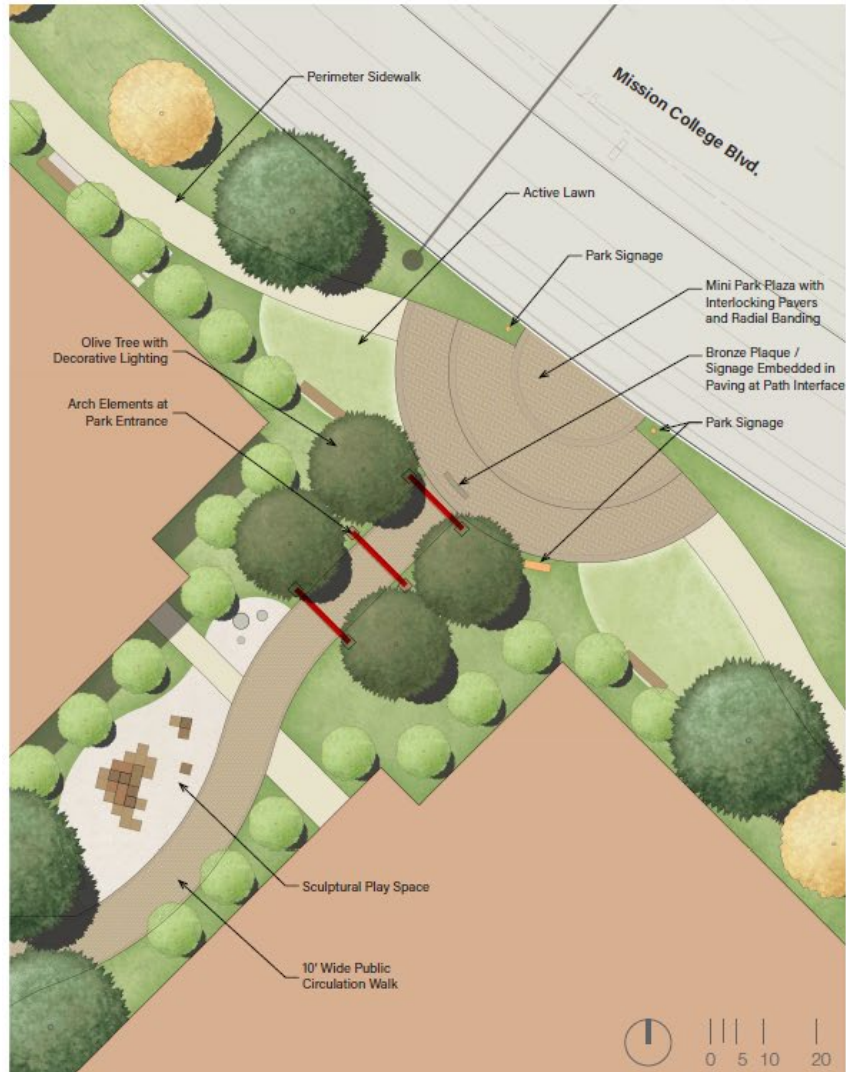
PROGRAM

Description

- Playground Areas
 - Ages 2-5
 - Ages 6-12
- Large Multi-Use Turf Field
- Small Open Turf Field
- Picnic Area
 - Picnic Tables
 - Shade Canopy
 - Pedestal BBQ (Charcoal)
 - Trash Receptacles
 - Hot Coals Bin
- Dog Park (Large Dog)
- Dog Park (Small Dog)
- Pavilion Structure with power
- Sculptural Garden Space
- Fitness Area
- Meditation Area
- Group Gathering Spaces
- Bench Seating
- Public Restroom
- Onsite Parking Lot
 - 15 Parking Stalls
- Loading Zone / ADA Parking Stall near Restrooms



NOTE:
Images shown are inspirational only.
Final specifications subject to change.

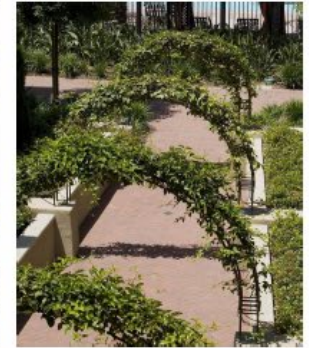
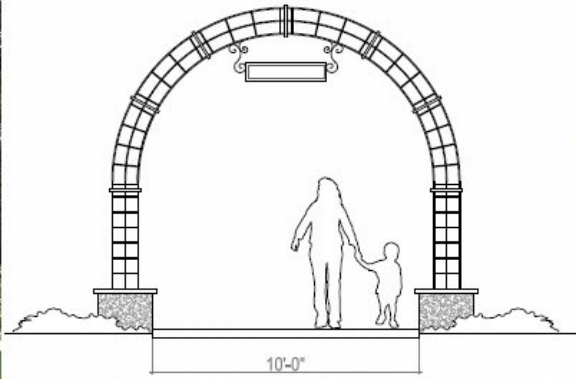




VIEW 1



VIEW 2





PICNIC AREA



ACTIVE LAWN AREA



PUBLIC CIRCULATION



GAME / LOUNGE SPACE



SCULPTURAL PLAY SPACE



PARK PLAZA



KEY MAP





PICNIC AREA



ACTIVE LAWN AREA



GAME / LOUNGE SPACE



SCULPTURAL PLAY SPACE



PARK PLAZA



KEY MAP





Community Engagement

- Online Survey
 - June 20 - July 7, 2025
 - 203 responses received
- Community Pop-Up Event
 - Mission College – July 4, 2025



Community Feedback on the Park Design

- Features requested by the community:
 - Game area
 - Cornhole
 - Board games
 - Table games
 - Children's Play Equipment (ages 2-5 and 6-12)
 - Outdoor Fitness
 - Balance station
 - Climbing structure
 - Cardio equipment



Community Feedback on the Park Design **cont'd**

- Additional features requested by the community:
 - Pathways
 - Native plants and flowers
 - Seating and shade for rest and conversation
 - Walking and jogging loop
 - Quiet Space
 - Quiet reflective space for meditation & reading
 - Yoga and stretching
 - Shade
 - Natural tree shade
 - Permanent shade structures



Commission Consideration

- Receive public comment on the proposed schematic design.
- Recommend that the City Council approve the proposed schematic design for the new public neighborhood park at 2518 Mission College Boulevard.