



Parks & Recreation Commission

RTC: 23-768

**Henry Schmidt Park
Playground Rehabilitation -
Project Initial Presentation**

July 18, 2023



Purpose of Presentation

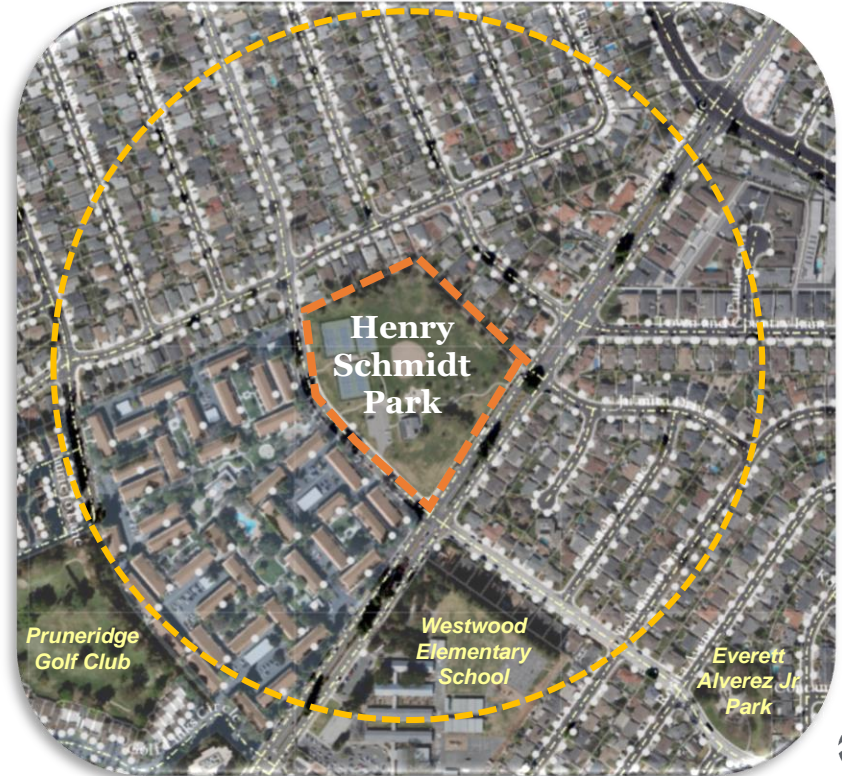
- Inform Parks & Recreation Commission of the project:

To re-imagine Henry Schmidt Park Playground to create a friendly, unique and inclusive park environment that welcomes youth, seniors and community members of all abilities and ethnicities.



Background

- 1977 - Park dedicated in honor of Henry Schmidt
- 2001 & 2014 – Park irrigation system retrofitted
- September 2013 – Council Goal: Enhance community sports & recreational and arts assets.
- January 2018 – Facility Condition Assessment Report
- February 2023– Council approved Gates + Associates contract
- April 2023 – Project kick-off
- July 2023 – 1st PRC Meeting





Project Objectives

- Use research based best practices and comply with all current Codes.
- Incorporate principles of inclusive playground design in the individual elements and the overall site plan.
- Incorporate seven elements of play (balancing, swinging, sliding, climbing, brachiating spinning, and running/free play) at the beginner, intermediate and advanced levels of play.
- Increase playground capacity while maintaining historical train theme of the existing park.
- Provide “age friendly” (multigenerational) spaces.
- Integrate nature and habitat (California native, drought resistant palette) into play environments.
- Provide outreach/education and master planning with residents and community partners.
- Address safe routes to parks (system connectivity) and American Disability Act (ADA) requirements within the park.
- Be sustainable (in materials, construction, life cycle, operations, and maintenance)

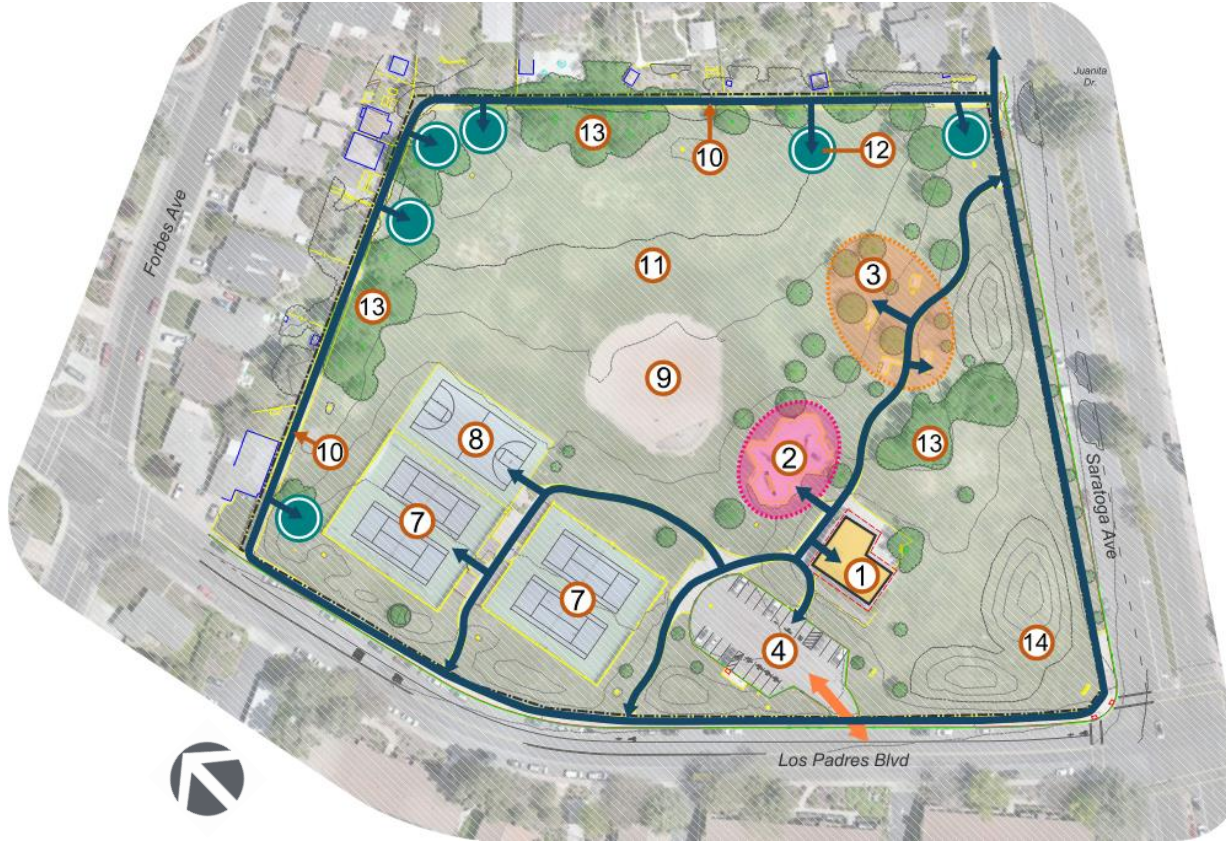



Phase 1 Scope

- Perform site assessment
- Evaluate ADA pedestrian pathway
- Perform robust community outreach (surveys, meetings, consensus building etc.), to develop Site Schematic Plan
- Obtain a recommendation for approval from the Parks and Recreation Commission and subsequent approval from City Council



Site Diagram



- ① Community Room & Public Restroom Facility
- ② Play Area
- ③ Picnic Area
- ④ Parking Lot
- ⑤ Park Lighting
- ⑥ Site Furnishings
- ⑦ Tennis Court
- ⑧ Basketball Court
- ⑨ Softball Field
- ⑩ Loop Path
- ⑪ Multi-use Meadow
- ⑫ Fitness Station 
- ⑬ Existing Tree Grove
- ⑭ Existing Grassy Berm



01 Community Room/
Restroom Facility



02 Play Area



03 Picnic Area & BBQ



04 Parking Lot/ EV Stalls



05 Park Lighting/Power Pole



06 Site Furnishings



07 Tennis Courts



08 Basketball Court



09 Softball Field



10 Loop Walking Path



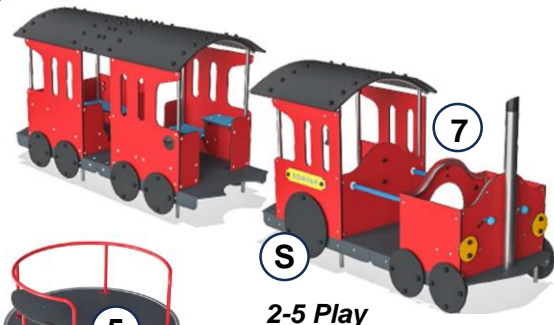
11 Multi-use Meadow



12 Fitness Stations



Train Theme 1: Train Depot



2-5 Play



6-12 Play



6



2-5 Play

7 ELEMENTS OF PLAY

- ① Balancing
- ② Brachiating
- ③ Climbing
- ④ Sliding
- ⑤ Spinning
- ⑥ Swinging
- ⑦ Free Play
- ⑧ Sensory



Train Theme 1: Train Depot

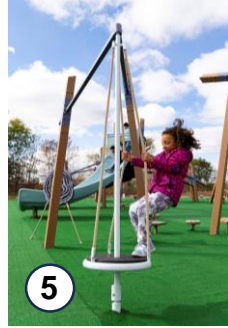


7 ELEMENTS OF PLAY

- ① Balancing
- ② Brachiating
- ③ Climbing
- ④ Sliding
- ⑤ Spinning
- ⑥ Swinging
- ⑦ Running/
Free Play
- ⑧ Sensory



Train Theme 2: Woodland Train



7 ELEMENTS OF PLAY

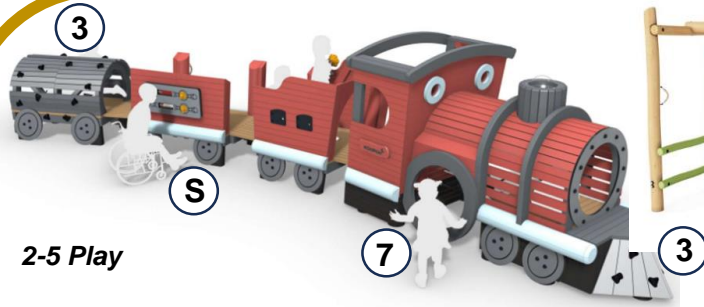
- ① Balancing
- ② Brachiating
- ③ Climbing
- ④ Sliding
- ⑤ Spinning
- ⑥ Swinging
- ⑦ Running/
Free Play
- Ⓢ Sensory



Train Theme 2: Woodland Train

7 ELEMENTS OF PLAY

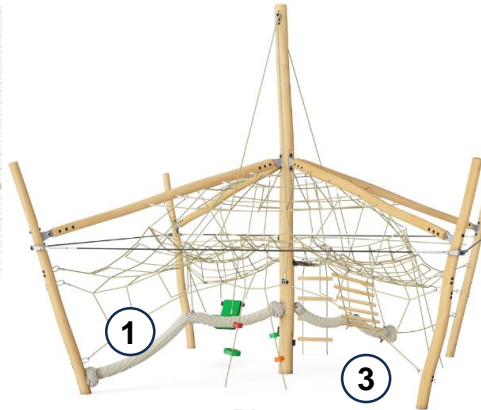
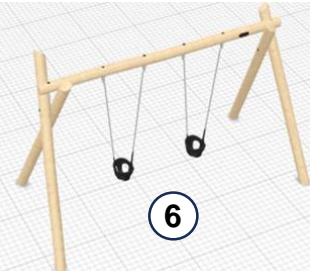
- ① Balancing
- ② Brachiating
- ③ Climbing
- ④ Sliding
- ⑤ Spinning
- ⑥ Swinging
- ⑦ Free Play
- ⑧ Sensory



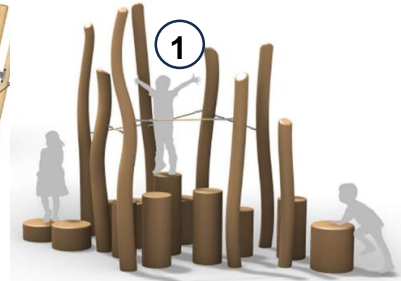
2-5 Play



6-12 Play



6-12 Play





Train Theme 3: Whimsical Train



7 ELEMENTS OF PLAY

- ① Balancing
- ② Brachiating
- ③ Climbing
- ④ Sliding
- ⑤ Spinning
- ⑥ Swinging
- ⑦ Running/
Free Play
- Ⓢ Sensory



7 ELEMENTS OF PLAY



Balancing Play



Brachiating Play





7 ELEMENTS OF PLAY



Climbing Play



Sliding Play



7 ELEMENTS OF PLAY



Spinning Play



Swinging Play





7 ELEMENTS OF PLAY



Sensory/ Free Play



Music Play



Project Schedule/ Next Step

Apr. 17, 2023

Jul. 18, 2023

Aug. 4, 2023

Aug. 11, 2023

Aug. 14, 2023

Nov. 14, 2023

**Project
Kick-off**

**1st PRC
Meeting:
On-line Survey
Begins**

**1st Outreach:
Street Dance
at Franklin
Square**

**2nd Outreach:
Cinema Night
at Henry
Schmidt Park**

**Online Survey
Ends**

**2nd PRC
Meeting**

**You
Are
here**



Recommendation

Formally initiate the Community Outreach Process for the Henry Schmidt Park Master Plan and Schematic Design.