



Parks & Recreation Commission Meeting

22-1527. Item #2A. Consideration of the Schematic Design – Master Plan for the New Public Mini Park at 2263 Calle Del Mundo (Ensemble Investments/Rethink Development – Tasman East Specific Plan)

January 17, 2023

Community Outreach

- August 16, 2022 – Parks & Recreation Commission Meeting
- September 17- 18, 2022 – Art & Wine Festival
- August 31, 2022 – September 20, 2022 – Community Survey



Public Input – Survey - Highlights

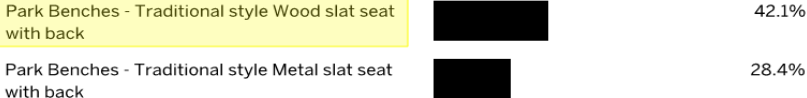
QUESTION 4

What type of lighting do you prefer in/under the trees?



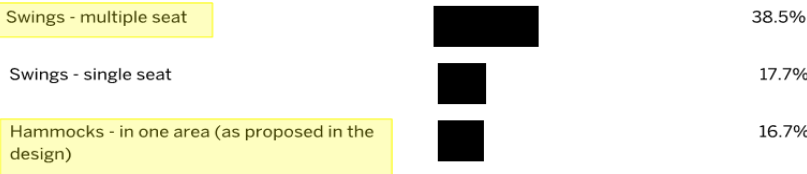
QUESTION 5

What type of seating would you prefer to use in the Park?



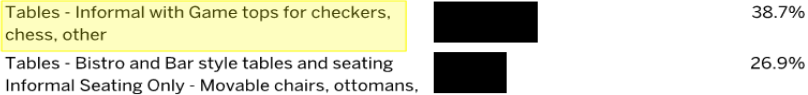
QUESTION 6

Do you prefer to have swings or hammocks in the Park?



QUESTION 9

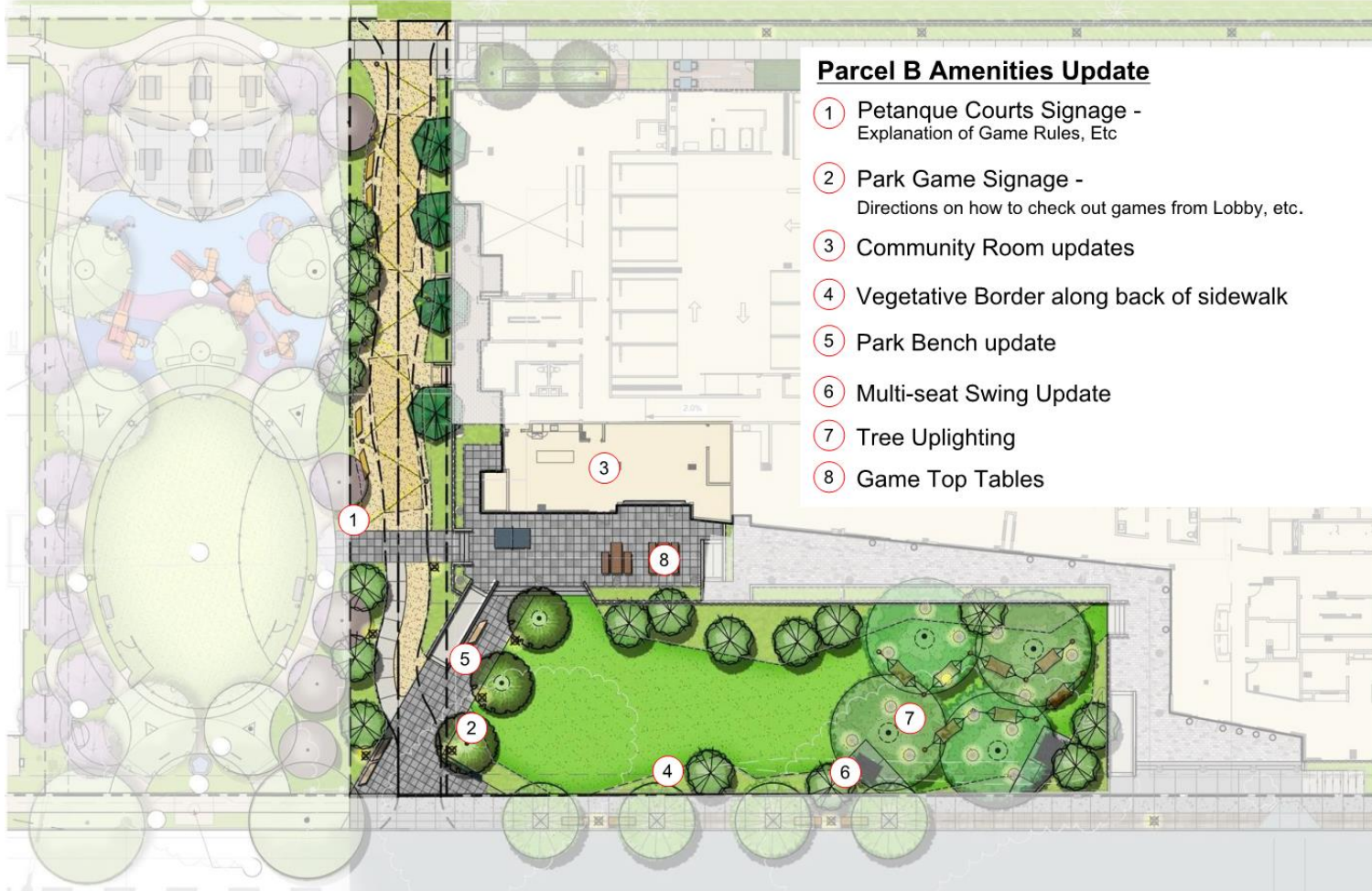
What furnishings would you use in the outdoor patio space next to the community room?



Parcel B Park Amenities



Parcel B Park Updates



Parcel B Amenities Update

- 1 Petanque Courts Signage - Explanation of Game Rules, Etc
- 2 Park Game Signage - Directions on how to check out games from Lobby, etc.
- 3 Community Room updates
- 4 Vegetative Border along back of sidewalk
- 5 Park Bench update
- 6 Multi-seat Swing Update
- 7 Tree Uplighting
- 8 Game Top Tables

Parcel B Park Furniture Updates



Multi-Seat Swing



Park Bench - to match Parcel A

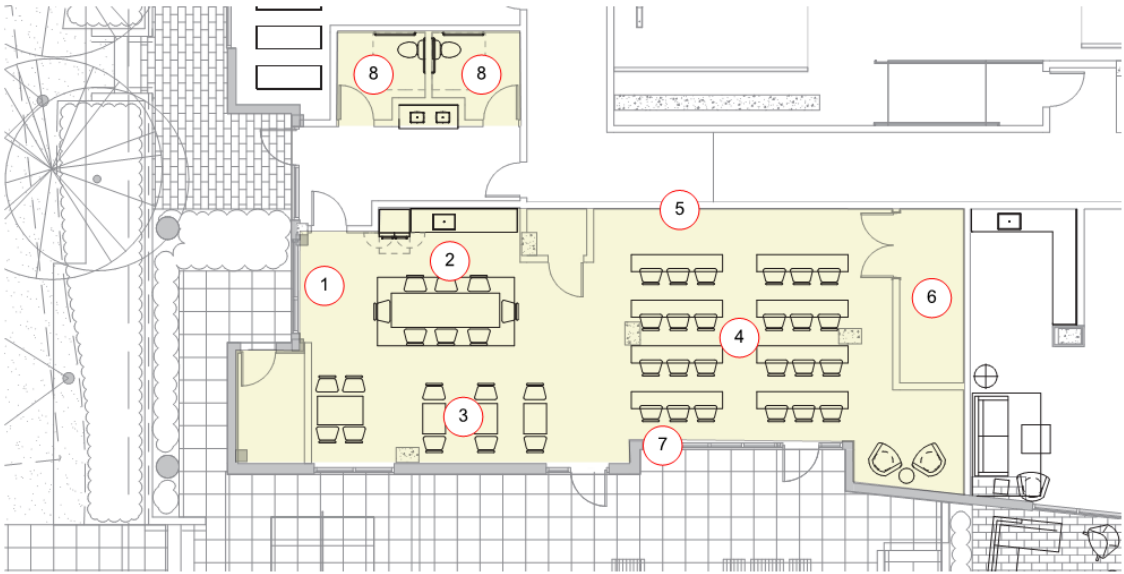


Trash/Recycle Receptacle - to match Parcel A



Park Table with Game Top

Community Room – Floor Plan



PARTIAL LEVEL 1 PLAN - N.T.S.

KEYNOTES

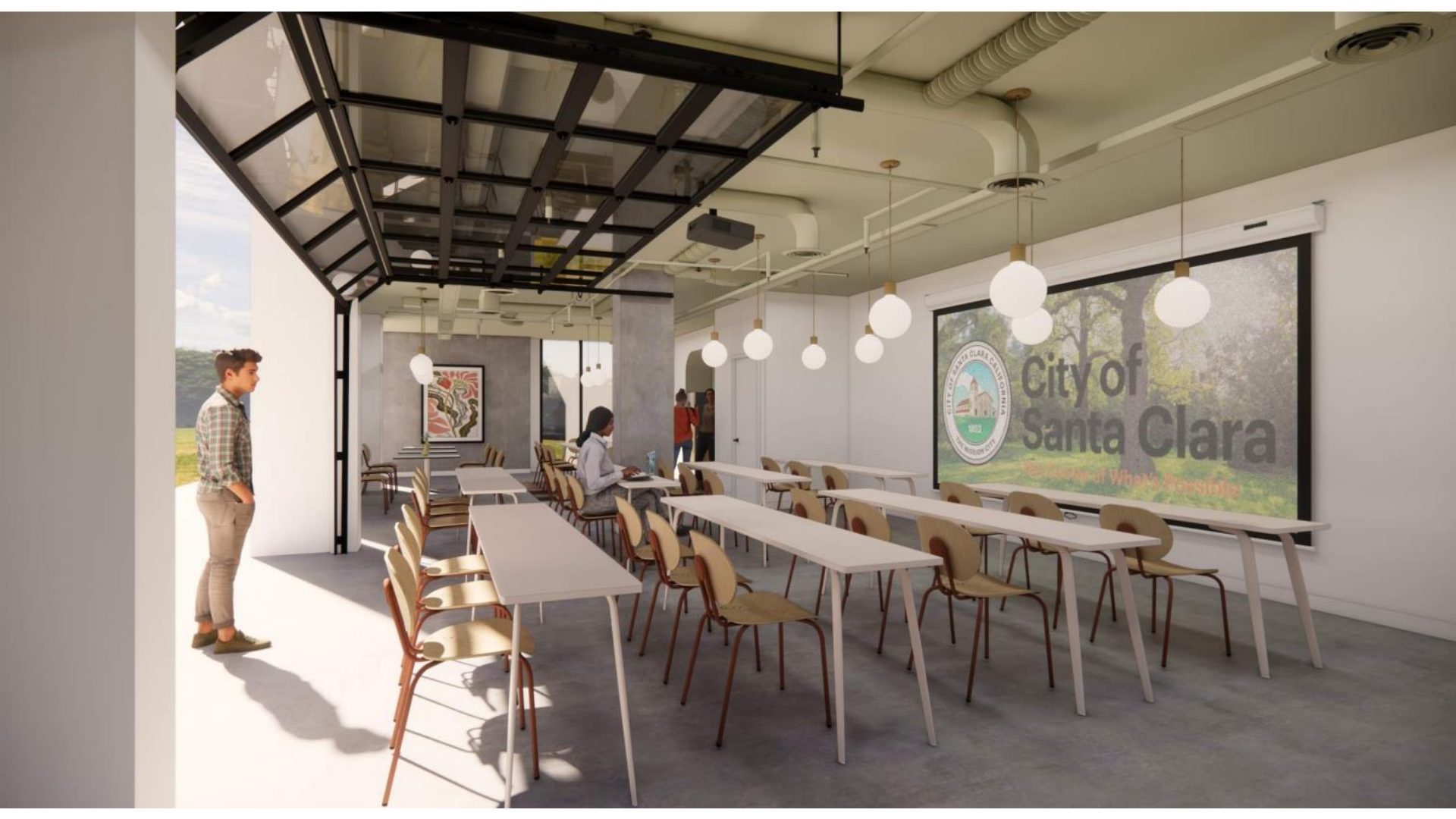
- 1. Park community room
- 2. Kitchen with central island
- 3. Flex seating
- 4. Lecture space
- 5. Projection Screen
- 6. Storage
- 7. Operable garage door
- 8. Restroom





City of
Santa Clara

The Summit of What's Possible



City of
Santa Clara

Department of What's Possible















HILL PARK

2265 CDM

Commission Consideration

- Receive Public Comment
- Make Recommendation:
that Council approve the proposed Schematic Design - Master Plan for the New Public Mini Park at 2263 Calle Del Mundo.

