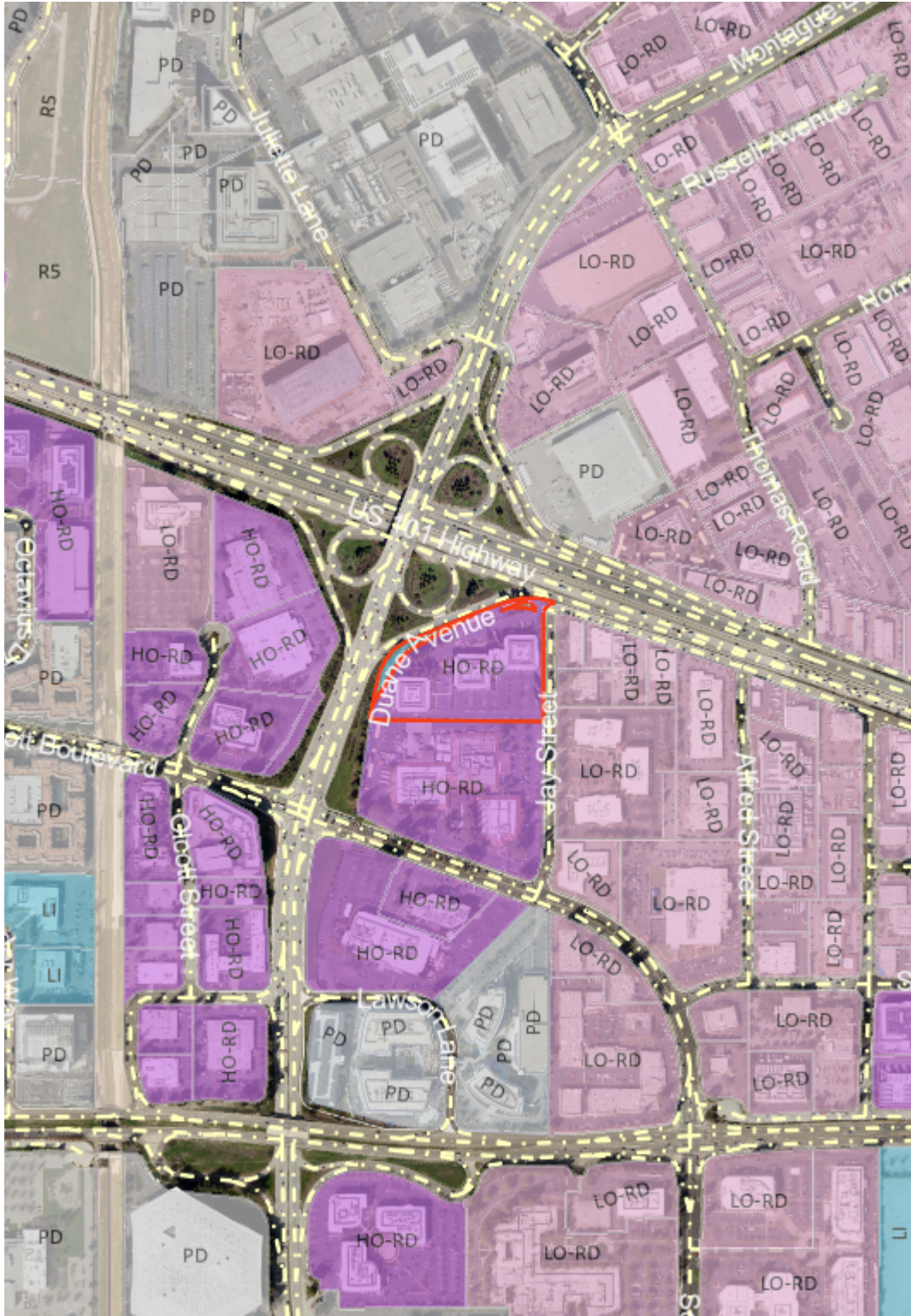


# Vicinity Map (Zoning)- 3250 Jay Street



**Zoning**

**Land Parcels**

- HO-RD - Office/R&D-High Intensity
- LI , ML - Light Industrial
- LO-RD - Low-Intensity Office/R&D
- PD - Planned Development

**Base Layers**

**Land Parcels**

- Land Parcels
- Right of Ways
- Common Areas

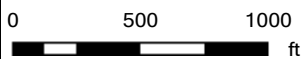
**Streets**

- 

**Notes:**

PLN25-00559

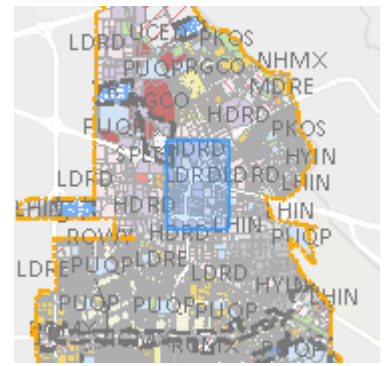
4/2/2026 12:39:11 PM



This map is a user generated static output from an Internet mapping site and is for reference only. Data layers that appear on this map may or may not be accurate, current, or otherwise reliable.

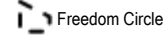


# Vicinity Map (General Plan)- 3250 Jay Street



**General And Specific Plans**

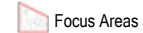
**Specific Plan Boundaries**



**General and Specific Plans**

- Very High Density Residential
- High Intensity Office / R&D

**Specific Plan Parcels**



**General Plan Phase II: 2015-2023**

- High Density Residential
- Very High Density Residential
- Residential / High Density Residential
- Low Intensity Office / R&D
- High Intensity Office / R&D
- Parks / Open Space
- Light Industrial

**Base Layers**

**Land Parcels**

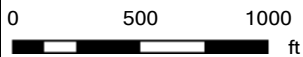
- Land Parcels
- Right of Ways
- Common Areas

**Streets**

**Notes:**

PLN25-00559

4/2/2026 1:10:18 PM



This map is a user generated static output from an Internet mapping site and is for reference only. Data layers that appear on this map may or may not be accurate, current, or otherwise reliable.

