



# **Parks & Recreation Commission Meeting**

**RTC #24-234 Item #3**

**Action to Initiate the Formal  
Community Input Process on the  
Proposed Schematic Design of a  
new Public Mini Park at  
4590 Patrick Henry Drive.**

**March 19, 2024**



## **City Code 17.35 – Park & Recreational Land**

- Upon receipt of a residential development application, the Director of Parks & Recreation shall review the application and make recommendation on the conditions necessary to comply with parkland dedication requirements.
- Every person who constructs or causes to be constructed a dwelling unit or dwelling units or who subdivides residential property shall dedicate land, pay a fee in lieu thereof, or provide a combination of such dedication and fee, at the discretion of the City, for the purpose of developing new or rehabilitating existing park or recreational facilities.



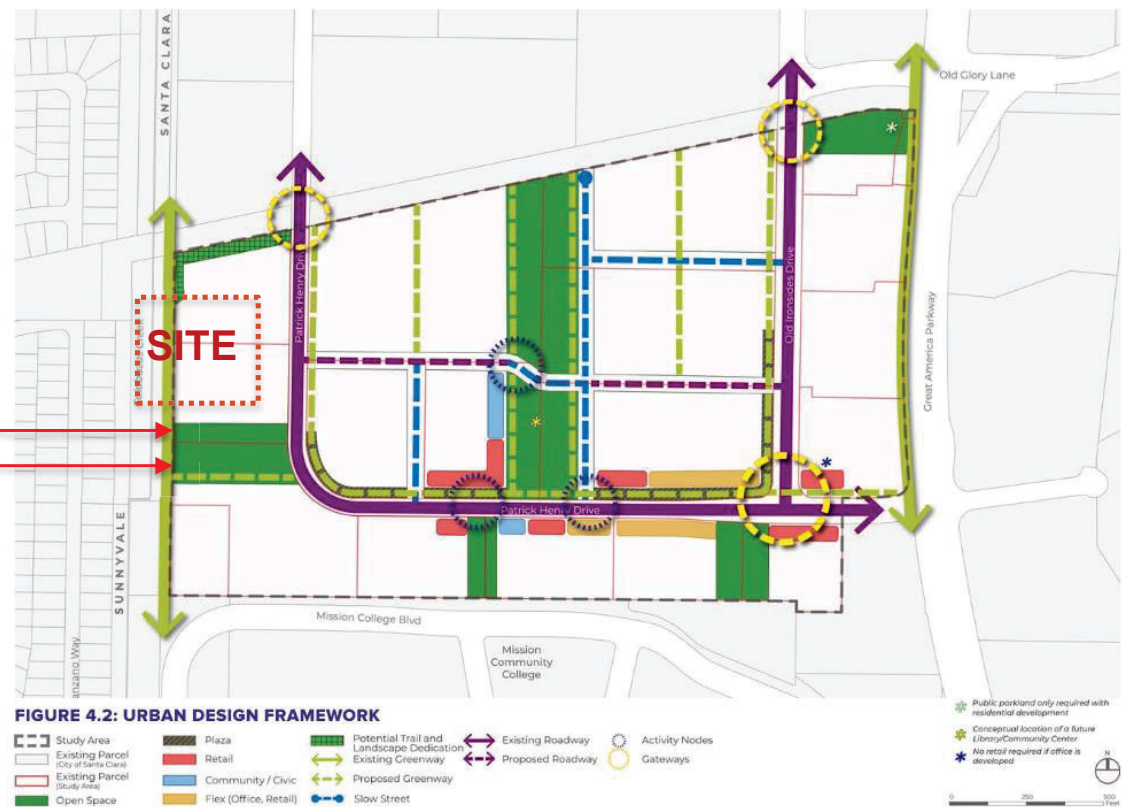
## Background

- The amount of parkland required for this residential project to mitigate the impact of the new residents on existing parks is 1.77-acres.
- The project will meet its parkland dedication requirements through the construction and dedication of a 0.55-acre mini park per the PHD Specific Plan requirements, and payment of fees due in-lieu of the parkland dedication.
- Tonight's presentation will be focused on the park in the southwest area of the PHD Specific Plan.

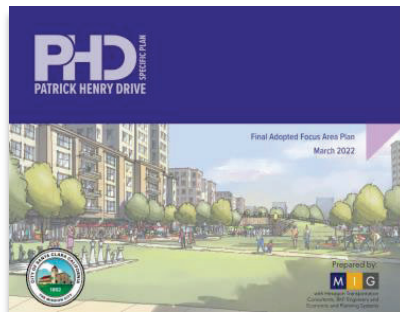


# Southwest Park

The southwest park will consist of two parcels, a 0.55-acre park and a 1.2-acre park which will be integrated into a cohesive single park experience; however, each park will be designed & dedicated separately by individual property owner.



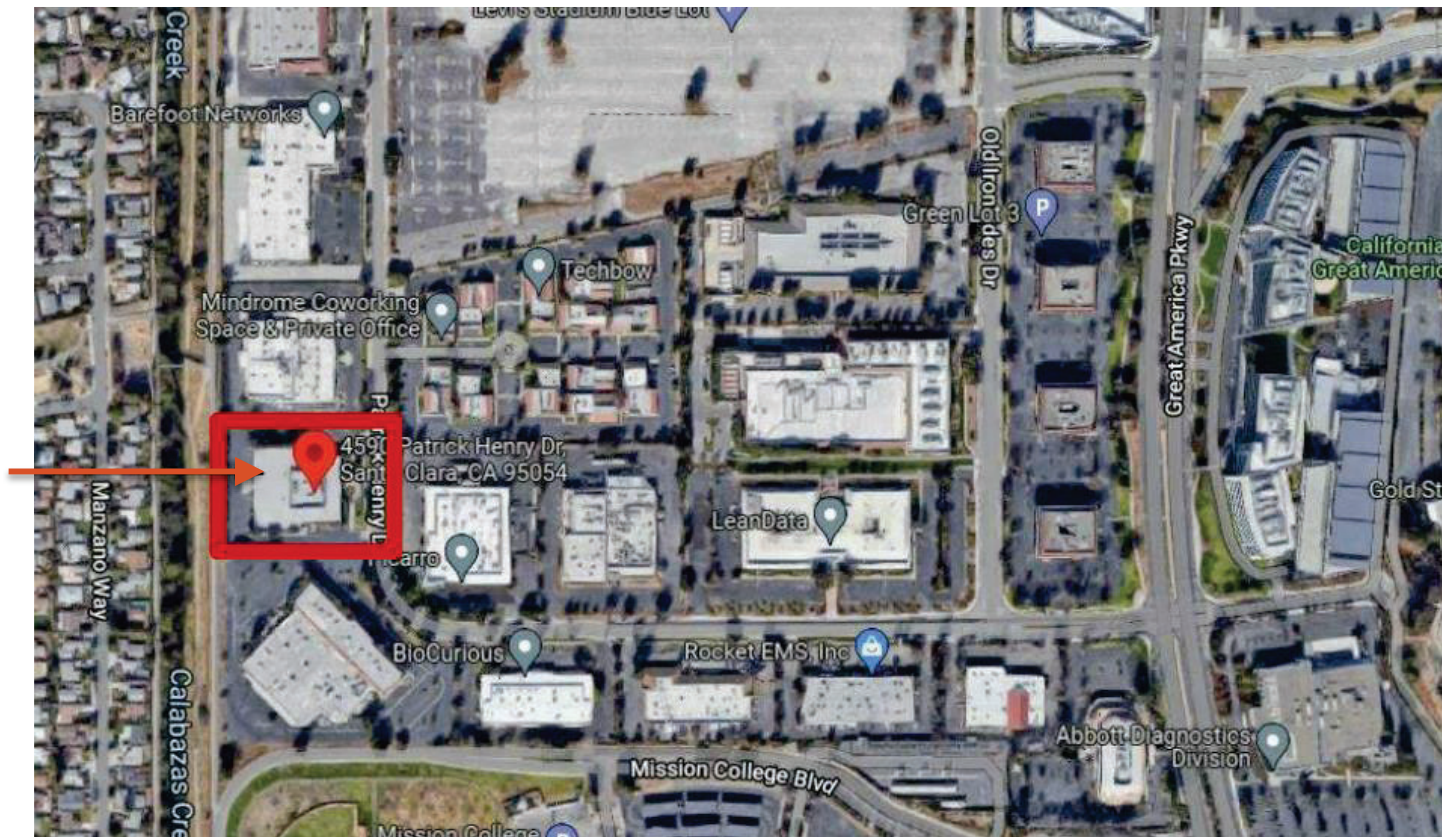
0.55-acres  
1.2-acres





# Site Context

**Project Site**



# 4590 Patrick Henry Drive

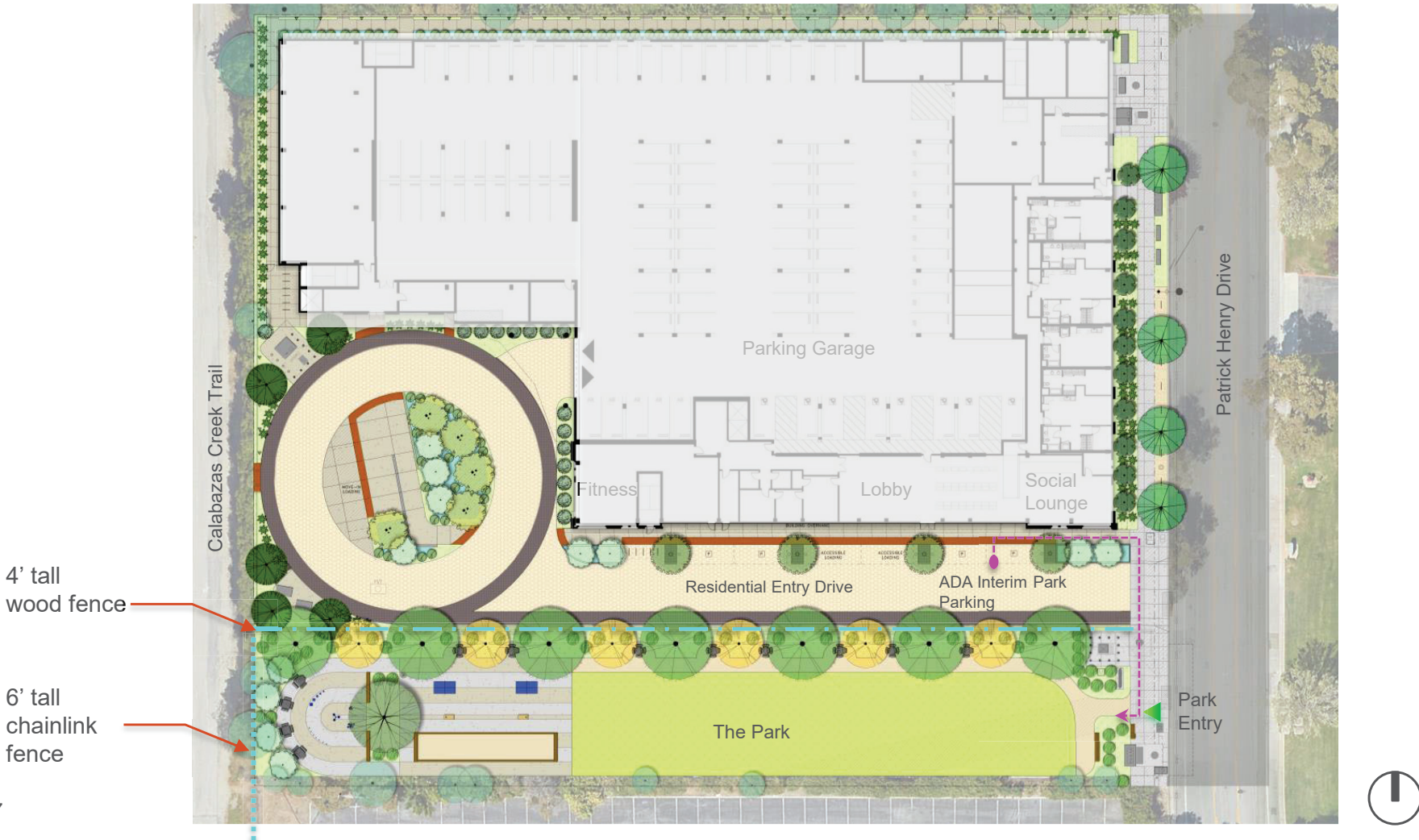


Park

AERIAL ACCESS ROAD

PATRICK HENRY DRIVE

# 0.55 Acre Southwest Park Dedication











## **Multi-Use Lawn**

- Lawn Games
- Catch
- Running/Free Play





## **Multi-Use Tables**

- Picnics
- Games
- Reading





## **Game Zone**

- Bocce Ball Court
- Corn Hole
- Table Tennis
- Game Tables





# Music Recreation

- Percussion Play
- Sensory Garden
- Seating





## Next Steps

- Initiate community engagement process:
  - An online survey soliciting community input will be posted on the City website following this meeting and will be open through April 12, 2024.
  - Conduct two pop-up community engagement sessions that are planned for April 2, 2024, at the following locations and times:
    - Senior Center from 10:30 a.m. to 12:00 p.m.
    - Community Recreation Center from 3:30 p.m. to 5:00 p.m.



## **Next Steps (continued)**

- In response to the community input, a revised schematic design will be presented to the Commission at a future meeting for a possible recommendation to Council for approval.



## **Recommendation:**

- Invite public comment and provide input on the initial Schematic Design of a New Public Mini Park at 4590 Patrick Henry Drive.