



**City of  
Santa Clara**  
The Center of What's Possible



*Santa Clara*  
**CITY LIBRARY**

# Facilities Master Plan

---

stakeholder visioning : parks & rec commission study session  
18 Nov 2024

**MSRDesign**

**introductions**

**introductions** | planning team



**Traci Lesneski**  
Principal in Charge  
MSR Design



**Kristilyn Vercruysse**  
Project Manager  
MSR Design



**Jeff Davis**  
Master Plan Architect  
MSR Design



**Lauren Gardner**  
Interior Designer  
MSR Design



**June Garcia**  
Library Operations  
Specialist  
June Garcia LLC



**Holly Yocom**  
Funding Strategist  
Pathway Group

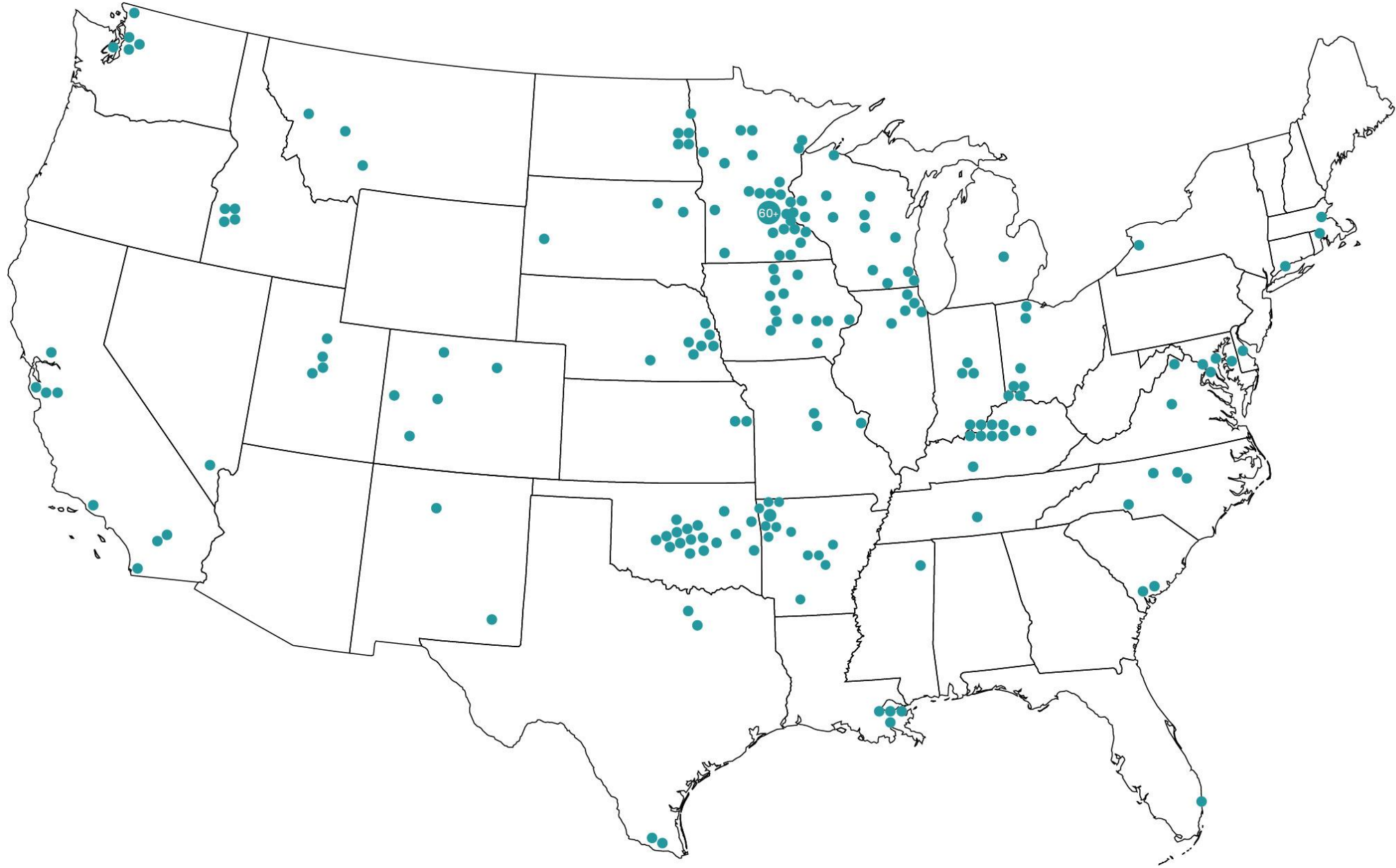


**James Casey**  
Cost Estimator  
Rider Levett Bucknall



**Building Analytics**  
Building Assessment  
Consultant

## library experts



total library projects

**278**

states

**34 + DC**

sf of library space

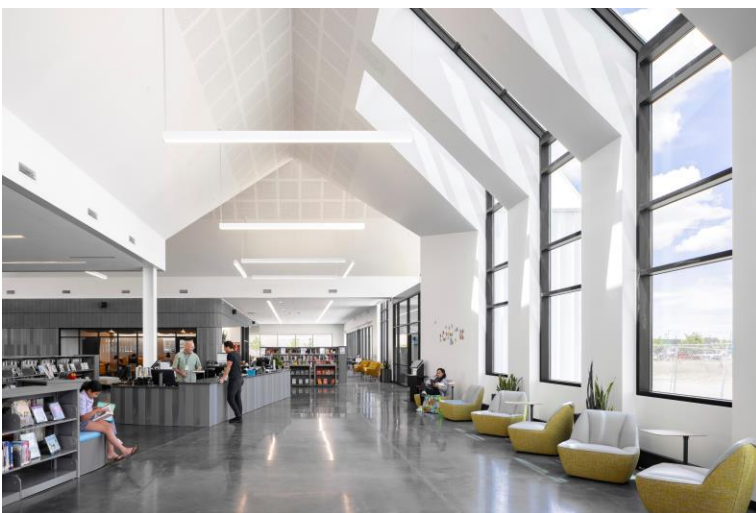
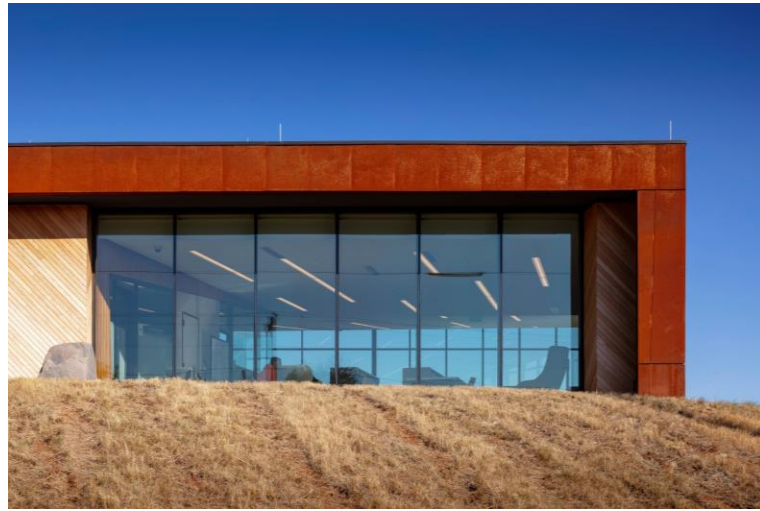
**15.8 million+**

total awards

**261**

awards for library work

**81**



# schedule



STRATEGIC PLAN  
(by others)

FACILITIES MASTER PLAN

# Site Visit 1 : community and staff engagement



# Site Visit 2 : community engagement



## Make a zine to help design the library's future!

**step one / fold** → **step two / create & answer**

1. fold in half      2. fold in half (again)      3. fold in half (again)

4. unfold to find 8 pages

5. fold in half + cut the center

6. unfolded, it should look like this

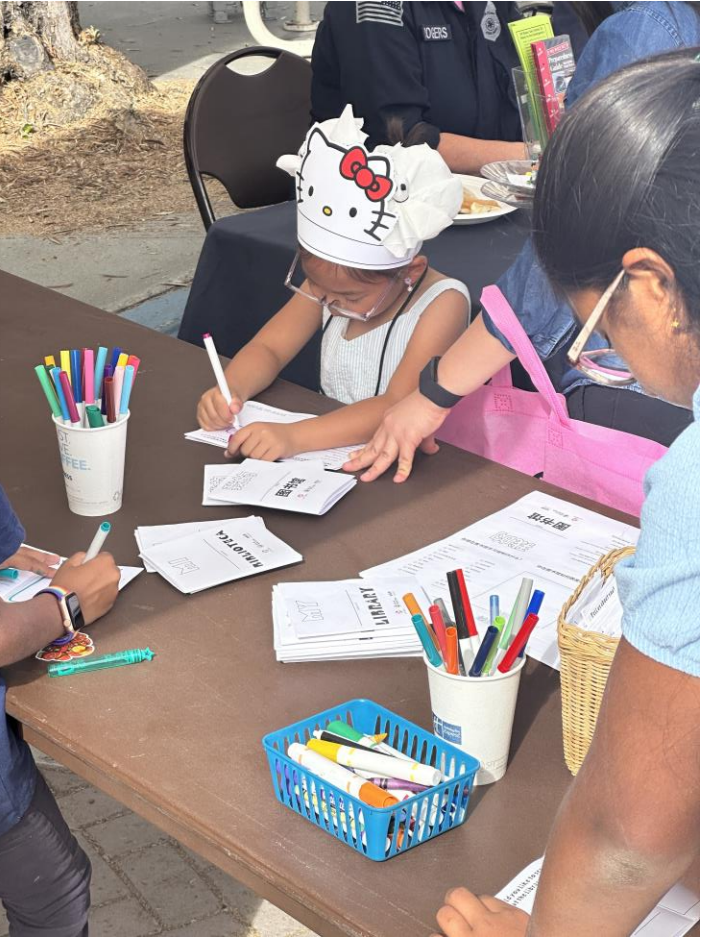
7. fold in half and push together

**step three / document**

We want to see what you'd like to see for the future of the library. Fill out the zine by writing + drawing answers to the questions listed.

Unfold the zine & hand to the design team to photograph & document. After that you can leave it behind with the team or take it home with you!

MSR Design      City of Santa Clara      CITY LIBRARY





# strategic plan | learning report engagement themes

## Community Aspirations

### **Affordable housing and access to housing**

- Economic prosperity for all
- Livable wages
- Financial literacy

### **Inclusivity and equity**

- Vibrant community with a unique identity
- Access to opportunity
- Services are well functioning
- Diversity is celebrated
- Resources for all people to have a good life

### **Community engagement and collaboration**

- Diverse representation
- Address needs and concerns of different populations
- Unify community while celebrating diversity
- Funding for community resources
- Have accurate representation of all cultures and communities.

### **Resources and support for education, literacy, and wellbeing**

- Higher Education for all
- Financial
- Civic literacy
- Healthcare for all
- Narrow or eliminate the gap
- Strong mental and physical health for everyone

## Library Aspirations

### **Expanded access as a community hub**

- Expanded hours
- Ensure accessibility for all
- Social hub and community meeting space

### **Social equity and inclusion**

- Affordable housing
- A balancing of resources
- More support for those experiencing homelessness and low income populations
- More services in various languages
- Legal assistance
- Tax support
- Welcoming immigrants and providing services
- Safety and wellbeing for everyone.

### **Celebrate diversity**

- Celebrate all culture city wide
- Provide opportunities to unite as a larger community

### **Communication and collaboration**

- Clear wayfinding to social services and social opportunities
- Providing all types of services for people to succeed.

### **Innovation**

- Adapt and innovate during these changing times
- Increase tech literacy
- Relevant and vibrant community

**visioning**

# 21<sup>st</sup> Century Libraries Are...



## community hubs / centros comunitarios



## resource centers centros de recursos



## a place for whole body wellbeing / un lugar para el bienestar integral

# What are your goals for the Santa Clara Community?

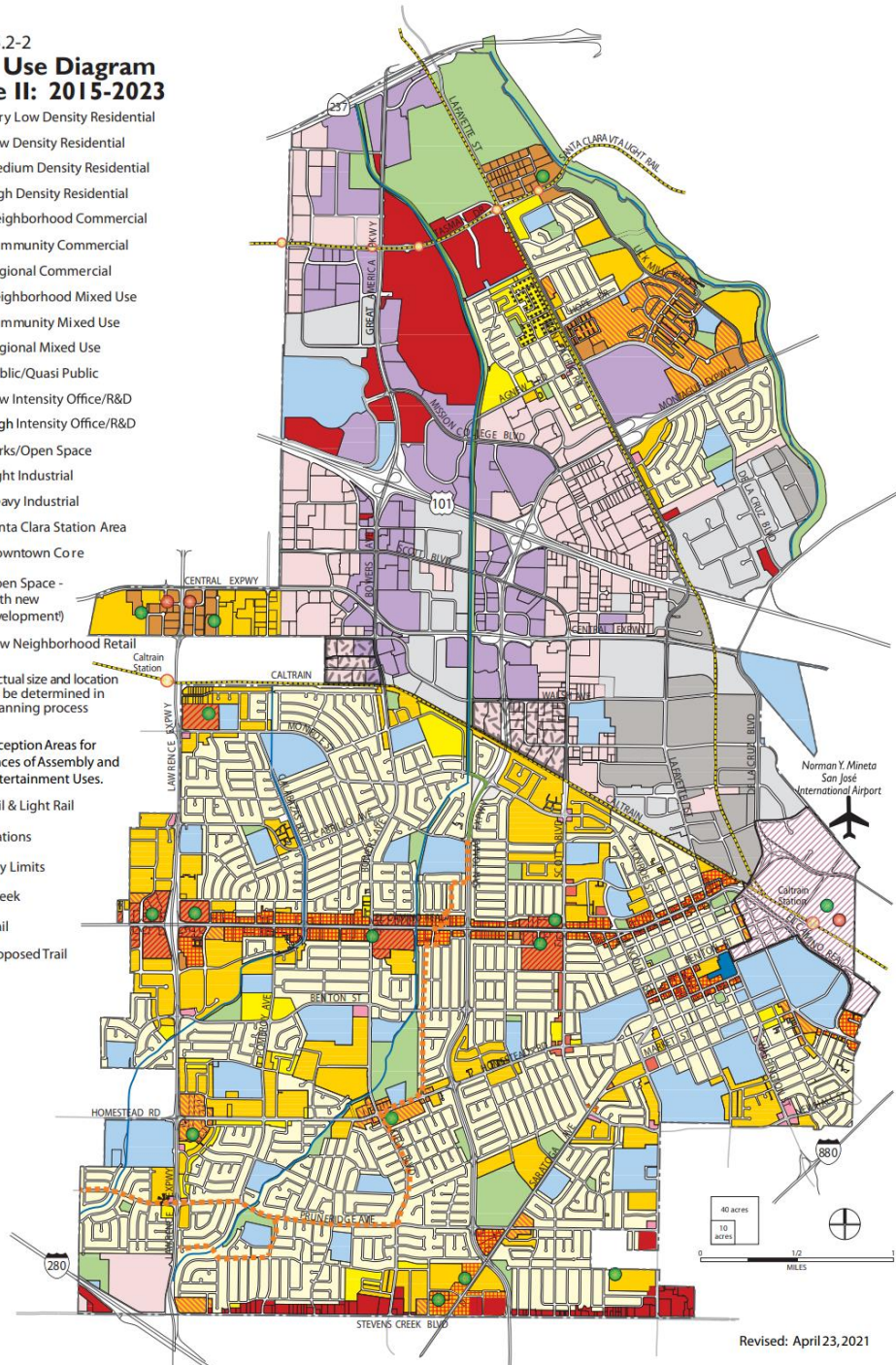
paint us a vivid vision for the future



# General Plan | land use diagrams

Figure 5.2-2  
**Land Use Diagram  
 Phase II: 2015-2023**

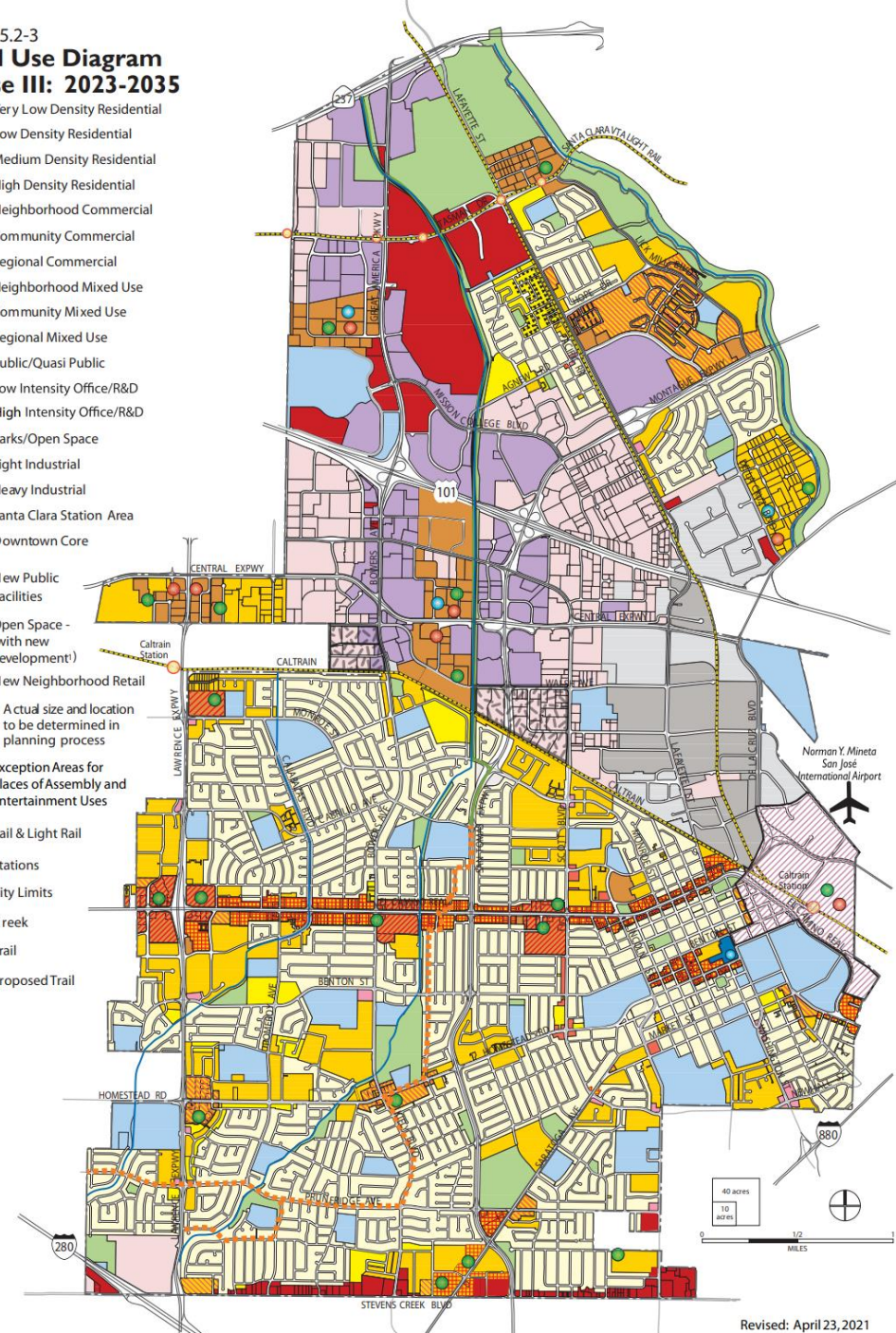
- Very Low Density Residential
- Low Density Residential
- Medium Density Residential
- High Density Residential
- Neighborhood Commercial
- Community Commercial
- Regional Commercial
- Neighborhood Mixed Use
- Community Mixed Use
- Regional Mixed Use
- Public/Quasi Public
- Low Intensity Office/R&D
- High Intensity Office/R&D
- Parks/Open Space
- Light Industrial
- Heavy Industrial
- Santa Clara Station Area
- Downtown Core
- Open Space - (with new development)
- New Neighborhood Retail
- <sup>1</sup> A actual size and location to be determined in planning process
- Exception Areas for Places of Assembly and Entertainment Uses.
- Rail & Light Rail
- Stations
- City Limits
- Creek
- Trail
- Proposed Trail



Revised: April 23, 2021

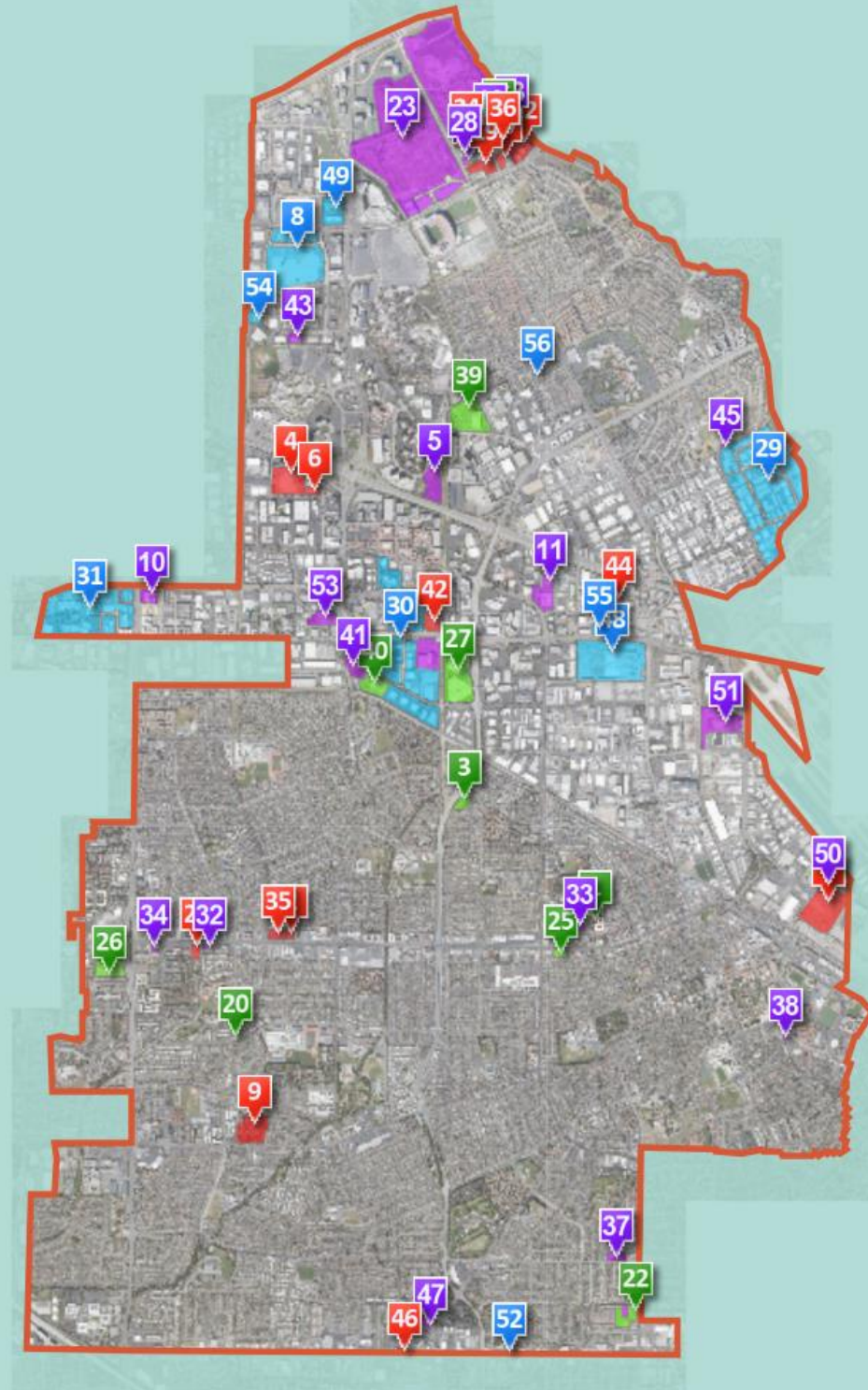
Figure 5.2-3  
**Land Use Diagram  
 Phase III: 2023-2035**

- Very Low Density Residential
- Low Density Residential
- Medium Density Residential
- High Density Residential
- Neighborhood Commercial
- Community Commercial
- Regional Commercial
- Neighborhood Mixed Use
- Community Mixed Use
- Regional Mixed Use
- Public/Quasi Public
- Low Intensity Office/R&D
- High Intensity Office/R&D
- Parks/Open Space
- Light Industrial
- Heavy Industrial
- Santa Clara Station Area
- Downtown Core
- New Public Facilities
- Open Space - (with new development)
- New Neighborhood Retail
- <sup>1</sup> A actual size and location to be determined in planning process
- Exception Areas for Places of Assembly and Entertainment Uses
- Rail & Light Rail
- Stations
- City Limits
- Creek
- Trail
- Proposed Trail



Revised: April 23, 2021

# System Map



# City of Santa Clara

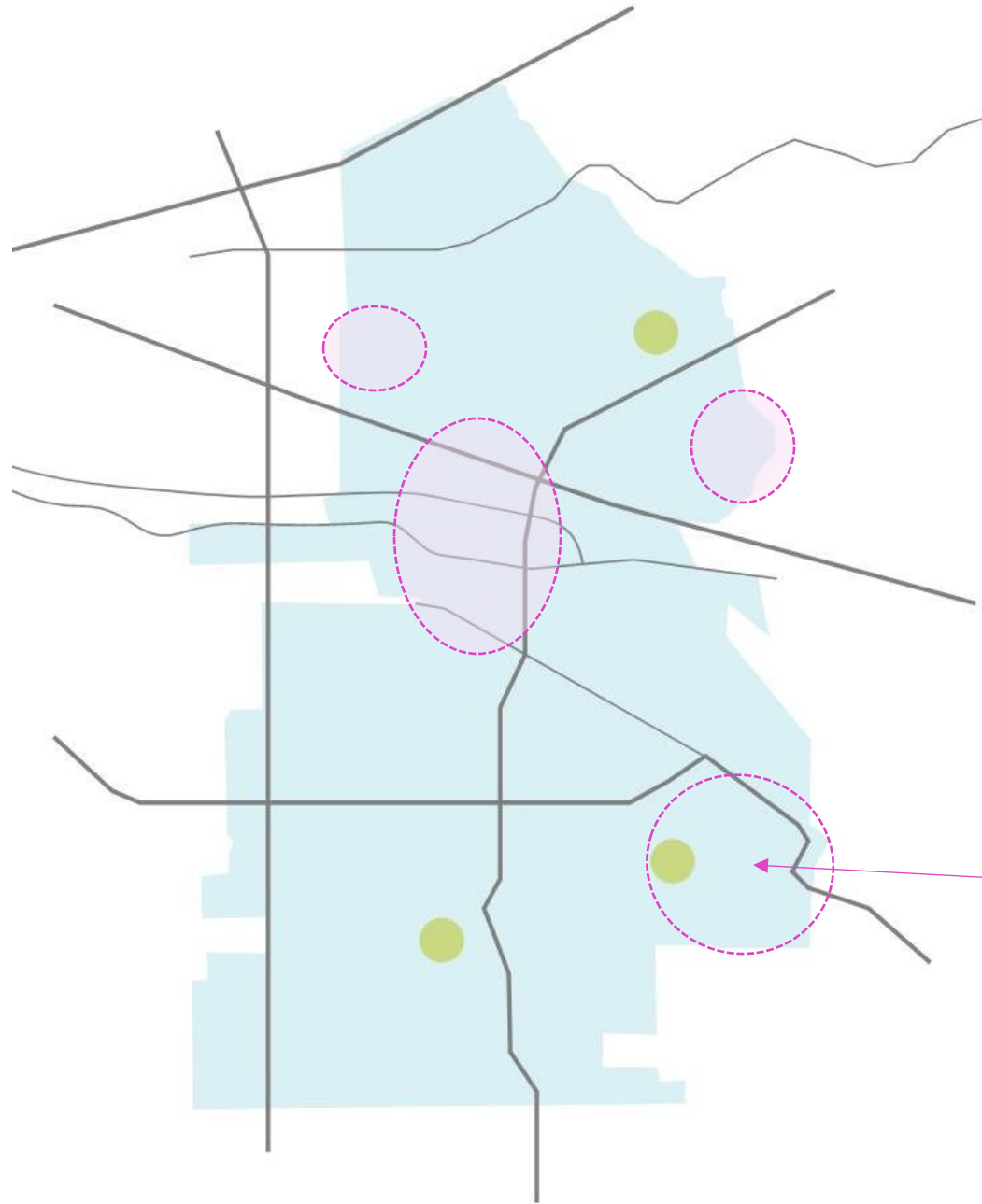
The Center of What's Possible

## Development Projects Story Map:

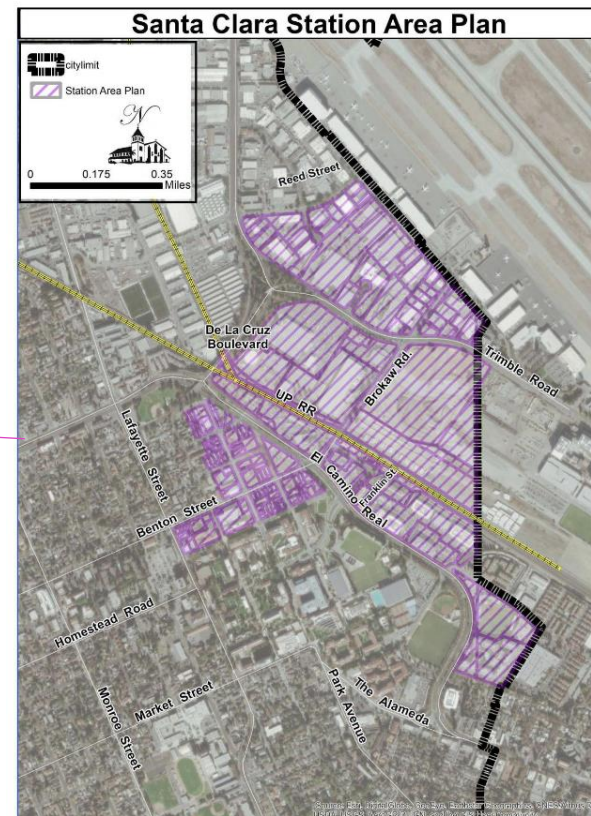
Where what's possible becomes reality

= Pending Review   = Approved   = Under Construction   = Completed

# Santa Clara residential growth map



Housing land use growth between 2023-2035



# How might SCCL help meet your goals for the community?





# “SCCL+” : what partnerships might benefit the community?

new, emerging, strengthening



SANTA CLARA UNIVERSITY  
THE JESUIT UNIVERSITY IN SILICON VALLEY



KAISER PERMANENTE®



Project  
Sentinel



ABODE



City of  
Santa Clara  
The Center of What's Possible

Parks and Rec

# What should the library continue to prioritize?

in context of your vision for the future



# What could SCCL improve?

to better position the community for the future



**thank you**