



# City of Santa Clara

## Meeting Agenda

### Parks & Recreation Commission

Tuesday, November 21, 2023

7:00 PM

Hybrid Meeting  
Cafeteria - City Hall East Wing  
1500 Warburton Avenue  
Santa Clara, CA 95050

Commissioner Vikas Gupta will be attending remotely from the following location:  
C56 Ram Marg, Shastri Nagar, Jaipur 302016, India

The City of Santa Clara is conducting the Parks & Recreation Commission meeting in a hybrid manner (in-person and a method for the public to participate remotely).

Via Zoom:

<https://santaclaraca.zoom.us/j/91316665755>

Meeting ID: 913 1666 5755

Or join by phone: 669-900-6833

#### **CALL TO ORDER AND ROLL CALL**

#### **CONSENT CALENDAR**

- 1.A 23-1214 [Action on the Parks & Recreation Commission Minutes of the October 17, 2023 Meeting](#)

**Recommendation:** Approve the Parks & Recreation Commission Minutes of the October 17, 2023 Meeting.

#### **PUBLIC PRESENTATIONS**

*[This item is reserved for persons to address the body on any matter not on the agenda that is within the subject matter jurisdiction of the body. The law does not permit action on, or extended discussion of, any item not on the agenda except under special circumstances. The governing body, or staff, may briefly respond to statements made or questions posed, and appropriate body may request staff to report back at a subsequent meeting.]*

#### **GENERAL BUSINESS**

2. 23-1366 [Make a Recommendation to Council on the Preferred Park Master Plan and Schematic Design for Henry Schmidt Park Playground Rehabilitation Project](#)

**Recommendation:** Make a recommendation to Council on the preferred park master plan and schematic design for Henry Schmidt Park and Playground Rehabilitation Project

3. 23-1211 [Receive a Presentation and Provide Feedback on the De La Cruz/Coleman Bikeway Planning Project](#)

**Recommendation:** Receive a presentation and provide feedback on draft design concepts.

4. 23-1369 [Parks & Recreation Commission Work Plan Goals for FY2023/24](#)

**Recommendation:** Report on activities and efforts in support of the Commission's Work Plan Goals for FY 2023/24.

**STAFF REPORT**

**COMMISSIONERS REPORT**

**ADJOURNMENT**

*The next scheduled meeting is on Tuesday, January 16, 2024 at 7:00 PM.*

**MEETING DISCLOSURES**

The time limit within which to commence any lawsuit or legal challenge to any quasi-adjudicative decision made by the City is governed by Section 1094.6 of the Code of Civil Procedure, unless a shorter limitation period is specified by any other provision. Under Section 1094.6, any lawsuit or legal challenge to any quasi-adjudicative decision made by the City must be filed no later than the 90th day following the date on which such decision becomes final. Any lawsuit or legal challenge, which is not filed within that 90-day period, will be barred. If a person wishes to challenge the nature of the above section in court, they may be limited to raising only those issues they or someone else raised at the meeting described in this notice, or in written correspondence delivered to the City of Santa Clara, at or prior to the meeting. In addition, judicial challenge may be limited or barred where the interested party has not sought and exhausted all available administrative remedies.

If a member of the public submits a speaker card for any agenda items, their name will appear in the Minutes. If no speaker card is submitted, the Minutes will reflect "Public Speaker."

In accordance with the requirements of Title II of the Americans with Disabilities Act of 1990 ("ADA"), the City of Santa Clara will not discriminate against qualified individuals with disabilities on the basis of disability in its services, programs, or activities, and will ensure that all existing facilities will be made accessible to the maximum extent feasible. The City of Santa Clara will generally, upon request, provide appropriate aids and services leading to effective communication for qualified persons with disabilities including those with speech, hearing, or vision impairments so they can participate equally in the City's programs, services, and activities. The City of Santa Clara will make all reasonable modifications to policies and programs to ensure that people with disabilities have an equal opportunity to enjoy all of its programs, services, and activities.

Agendas and other written materials distributed during a public meeting that are public record will be made available by the City in an appropriate alternative format. Contact the City Clerk's Office at 1 408-615-2220 with your request for an alternative format copy of the agenda or other written materials.

Individuals who require an auxiliary aid or service for effective communication, or any other disability-related modification of policies or procedures, or other accommodation, in order to participate in a program, service, or activity of the City of Santa Clara, should contact the City's ADA Coordinator at 408-615-3000 as soon as possible but no later than 48 hours before the scheduled event.



# City of Santa Clara

1500 Warburton Avenue  
Santa Clara, CA 95050  
santaclaraca.gov  
@SantaClaraCity

## Agenda Report

---

23-1214

Agenda Date: 11/21/2023

---

### **REPORT TO PARKS & RECREATION COMMISSION**

#### **SUBJECT**

Action on the Parks & Recreation Commission Minutes of the October 17, 2023 Meeting

#### **RECOMMENDATION**

Approve the Parks & Recreation Commission Minutes of the October 17, 2023 Meeting.

Prepared by: Therie Velasco-Gonzales, Office Specialist III

Approved by: Dale Seale, Acting Director of Parks & Recreation

#### **ATTACHMENTS**

1. Draft - Parks & Recreation Commission Minutes of the October 17, 2023 Meeting



# City of Santa Clara

## Meeting Minutes

### Parks & Recreation Commission

10/17/2023

7:00 PM

Hybrid Meeting  
Cafeteria - City Hall East Wing  
1500 Warburton Avenue  
Santa Clara, CA 95050

The City of Santa Clara is conducting the Parks & Recreation Commission meeting in a hybrid manner (in-person and a method for the public to participate remotely).

Via Zoom:

<https://santaclaraca.zoom.us/j/91316665755>

Meeting ID: 913 1666 5755

Or join by phone: 669-900-6833

#### **CALL TO ORDER AND ROLL CALL**

**Chair Caldwell called the meeting to order at 7:07 PM.**

**Present** 7 - Chair Dana Caldwell, Commissioner Maureen Chu, Commissioner Eversley Forte, Commissioner Kelly Cox, Vice Chair Sajid Hai, Commissioner Brittany Ricketts, and Commissioner Vikas Gupta

#### **CONSENT CALENDAR**

**1.A** [23-1212](#) Action on the Parks & Recreation Commission Minutes of the September 19, 2023 Meeting

**Recommendation:** Approve the Parks & Recreation Commission Minutes of the September 19, 2023 Meeting.

**Commissioner Forte made a motion, seconded by Vice-Chair Hai, to approve the September 19, 2023 Minutes of the Meeting as amended.**

**Aye:** 7 - Chair Caldwell, Commissioner Chu, Commissioner Forte, Commissioner Cox, Vice Chair Hai, Commissioner Ricketts, and Commissioner Gupta

#### **PUBLIC PRESENTATIONS**

**There was no public presentation for this meeting.**

**GENERAL BUSINESS**

2. [23-1209](#) Consideration of the Schematic Design - Master Plan for the New Public Neighborhood Park at 2200 Calle Del Luna (Holland Partner Group - Tasman East Specific Plan)

**Recommendation:** Recommend that Council approve the proposed Schematic Design - Master Plan for the New Public Neighborhood Park at 2200 Calle De Luna.

**Commissioner Chu made a motion, seconded by Vice-Chair Hai, to recommend that Council approve the proposed Schematic Design - Master Plan for the New Public Neighborhood Park at 2200 Calle De Luna.**

**Aye:** 7 - Chair Caldwell, Commissioner Chu, Commissioner Forte, Commissioner Cox, Vice Chair Hai, Commissioner Ricketts, and Commissioner Gupta

3. [23-1223](#) Parks & Recreation Commission Calendar of Meetings for 2024 (Continued from September 19, 2023)

**Recommendation:** Recommend that Council Approve a Resolution to Set the Parks & Recreation Commission Calendar of Meetings for 2024.

**Vice-Chair Hai made a motion, seconded by Commissioner Forte, to recommend that Council approve a Resolution to set the Parks & Recreation Commission Calendar of Meetings for 2024.**

**Aye:** 7 - Chair Caldwell, Commissioner Chu, Commissioner Forte, Commissioner Cox, Vice Chair Hai, Commissioner Ricketts, and Commissioner Gupta

4. [23-1224](#) Recommend Nominee(s) for Consideration as the "2023 Honorary Holiday Tree Lighter" for the Annual Holiday Tree Lighting Ceremony on Friday, December 1, 2023. (Continued from September 19, 2023)

**Recommendation:** Staff has no recommendation.

**Commissioner Chu made a motion, seconded by Vice-Chair Hai, to recommend Ana Vargas-Smith as the Nominee for consideration as the "2023 Honorary Holiday Tree Lighter" for the Annual Holiday Tree Lighting Ceremony on Friday, December 1, 2023.**

**Aye:** 7 - Chair Caldwell, Commissioner Chu, Commissioner Forte, Commissioner Cox, Vice Chair Hai, Commissioner Ricketts, and Commissioner Gupta

5. [23-1213](#) Develop Initial Draft of the Commission Work Plan Goals and Activities for FY2023/24 (Continued from September 19, 2023)

**Recommendation:** Develop a Parks & Recreation Commission Work Plan for FY2023/24 including goals, supporting activities and subcommittee assignments.

**Vice-Chair Hai made a motion, seconded by Commissioner Gupta, to adopt as amended, the work plan goals from the previous FY for FY2023/24 with the addition of work plan goal, (E) Participate in the Parks & Recreation Master Plan process.**

**Aye:** 7 - Chair Caldwell, Commissioner Chu, Commissioner Forte, Commissioner Cox, Vice Chair Hai, Commissioner Ricketts, and Commissioner Gupta

#### **Adopt Work Plan Goals for FY2023/24.**

**Commissioner Chu made a motion, seconded by Vice-Chair Hai, to approve all work plan goals for FY2023/24. A: 1) Review park site and facility condition assessments and recommend priorities given existing and anticipated service levels and available resources; B: 1) Review and solicit community input on the existing City park rehabilitation projects based on the current Capital Improvement Program (CIP) Budget and schedule; and 2) review residential developer proposed schematic designs for new neighborhood parks that serve new residential development; C: 1) Host and develop recommendations for the annual Santa Clara Art & Wine Festival 2024; and 2) participate in Citywide Special events; D: 1) Partner with at least one other City commission to build on/expand at least one existing Parks & Recreation event by adding one extra element for patrons to interact with during the event; and E: 1) Participate in the Parks & Recreation Master Plan process.**

**Aye:** 7 - Chair Caldwell, Commissioner Chu, Commissioner Forte, Commissioner Cox, Vice Chair Hai, Commissioner Ricketts, and Commissioner Gupta

#### **Creation of Subcommittees**

**Vice-Chair Hai made a motion, seconded by Commissioner Chu, to create subcommittees with staff support, spearheaded by Commissioners Chu, Hai, and Gupta. This item is to be continued in the November 21, 2023 Parks & Recreation Commission meeting.**

**Aye:** 7 - Chair Caldwell, Commissioner Chu, Commissioner Forte, Commissioner Cox, Vice Chair Hai, Commissioner Ricketts, and Commissioner Gupta

**STAFF REPORT**

**Acting Director Dale Seale** updated the Commission regarding the following parks: Fairway Glen Restroom installation is continuing. Warburton Park and Henry Schmidt Park: both consultants for the respective parks are in their initial schematic design stage. The Central Park Entrance Project is at about 95% of construction plans and estimates, and it is being reviewed by city departments. Magical Bridge All-Inclusive Playground Project is progressing on schedule, and those who are visiting Central Park can see the progress with construction. Westwood Oaks Park Playground Rehabilitation Project construction is underway. For more information regarding park improvements and developer park projects, please see the Park Projects page on the City of Santa Clara website. The Montague Park Building is almost finished, and soft opening is expected at the end of the year.

**Recreation Manager Kimberly Castro** advised the Commission that they should have received an invitation to attend the ethics training by the City Attorney which will be on Thursday, October 26, from 5 p.m. to 8 p.m., in Council Chambers. On Thursday, October 19, the Senior Center is celebrating Oktoberfest, from 12 noon to 1 p.m., and all commissioners are welcome to come. Summer Concerts in the Park series and Sunset Cinemas have wrapped up for the calendar year. Manager Castro thanked commissioners for their participation, attendance, and support.

A question was raised about the ethics training: If one has already taken the ethics training online, is the October 26 training still required, or optional? The ethics training is not required. However, the training is comprehensive and will cover such topics as: Ethics Principles, Conflicts of Interest Laws, Perquisites and Temptations of Office, Government Transparency Laws, and Fair Process Laws. All city boards, commissions, committees, staff and the community, are invited to attend.



**COMMISSIONERS REPORT**

**Commissioner Chu** attended the last of the Concert at the Park series at the North Side. Commissioner Chu shared that her neighbors in the north side of the City were excited for all the events on their side of town. Many of them didn't know about the concerts, heard the music, and came out. Everybody was saying, "I thought this is only at Central Park." Commissioner Chu also thanked staff for getting the Agnews Historic Park restrooms opened according to the established city park schedule. Her neighbor who inquired about this was very happy. Her Girl Scout Troop continues to meet at the Lick Mill Park building, which is a great resource.

**Commissioner Cox** thanked everyone for the Art & Wine Festival efforts. She shared that she has had a sighting of a coyote at Ulistac Park. Commissioner Cox also mentioned about the mechanical horse public art display joint venture of Santa Clara University's School of Engineering, College and Science and the Performing Arts Center and the City of Santa Clara. The City contributed the most to the art installation; the horse is on display at the Sobrato Campus for Diversity and Inclusion (SCDI). It's one of these partnerships where we are trying to get more people to venture onto campus and check out things. Commissioner Cox was glad that the Mayor was at the event. Commissioners, and the University President were also present. Santa Clara University is like a full city within the city, and a quick stroll to downtown Santa Clara.

**Commissioner Forte** attended the Concert in the Park at Live Oak Park.

**Commissioner Gupta** attended the Parade of Champions; for the first time, he saw the rendition of the national anthem by Dorothy McPherson-O'Donnell who was riding on a horse. He also saw olympian Donna de Varona who was one of the grand marshals. He mentioned that his son was also in the parade. He took strolls in Central Park. Commissioner Gupta mentioned that staff are constantly cleaning up after the geese, and was curious about how the community can help to assist with effort. He is happy help. For next month's Regular Meeting, Commissioner Gupta will be attending via Zoom.

**Commissioner Hai** went to Westwood Oaks Park and Jenny Strand Park.

**Commissioner Ricketts** attended the Art & Wine Festival in September. The Wade Brummal subcommittee also met and could have a report for the upcoming meeting. She is looking forward to the Fall events.

**Chair Caldwell** visited Alvarez Park and Central Park - Magical Bridge All-Inclusive Playground to see the progress. Chair Caldwell is also thankful for the new garbage cans in Maywood Park.

**ADJOURNMENT**

**Commissioner Chu made a motion, seconded by Vice-Chair Hai, to adjourn the meeting at 8:00 p.m., until the next Parks & Recreation Commission meeting on Tuesday, November 21, 2023, at 7:00 p.m..**

**Aye:** 7 - Chair Caldwell, Commissioner Chu, Commissioner Forte, Commissioner Cox, Vice Chair Hai, Commissioner Ricketts, and Commissioner Gupta

**MEETING DISCLOSURES**

The time limit within which to commence any lawsuit or legal challenge to any quasi-adjudicative decision made by the City is governed by Section 1094.6 of the Code of Civil Procedure, unless a shorter limitation period is specified by any other provision. Under Section 1094.6, any lawsuit or legal challenge to any quasi-adjudicative decision made by the City must be filed no later than the 90th day following the date on which such decision becomes final. Any lawsuit or legal challenge, which is not filed within that 90-day period, will be barred. If a person wishes to challenge the nature of the above section in court, they may be limited to raising only those issues they or someone else raised at the meeting described in this notice, or in written correspondence delivered to the City of Santa Clara, at or prior to the meeting. In addition, judicial challenge may be limited or barred where the interested party has not sought and exhausted all available administrative remedies.

If a member of the public submits a speaker card for any agenda items, their name will appear in the Minutes. If no speaker card is submitted, the Minutes will reflect "Public Speaker."

In accordance with the requirements of Title II of the Americans with Disabilities Act of 1990 ("ADA"), the City of Santa Clara will not discriminate against qualified individuals with disabilities on the basis of disability in its services, programs, or activities, and will ensure that all existing facilities will be made accessible to the maximum extent feasible. The City of Santa Clara will generally, upon request, provide appropriate aids and services leading to effective communication for qualified persons with disabilities including those with speech, hearing, or vision impairments so they can participate equally in the City's programs, services, and activities. The City of Santa Clara will make all reasonable modifications to policies and programs to ensure that people with disabilities have an equal opportunity to enjoy all of its programs, services, and activities.

Agendas and other written materials distributed during a public meeting that are public record will be made available by the City in an appropriate alternative format. Contact the City Clerk's Office at 1 408-615-2220 with your request for an alternative format copy of the agenda or other written materials.

Individuals who require an auxiliary aid or service for effective communication, or any other disability-related modification of policies or procedures, or other accommodation, in order to participate in a program, service, or activity of the City of Santa Clara, should contact the City's ADA Coordinator at 408-615-3000 as soon as possible but no later than 48 hours before the scheduled event.



## Agenda Report

23-1366

Agenda Date: 11/21/2023

### REPORT TO PARKS AND RECREATION COMMISSION

#### SUBJECT

Make a Recommendation to Council on the Preferred Park Master Plan and Schematic Design for Henry Schmidt Park Playground Rehabilitation Project

#### COUNCIL PILLARS

Enhance Community Sports, Recreational and Arts Assets  
Deliver and Enhance High Quality Efficient Services and Infrastructure

#### BACKGROUND

In 1965, the City of Santa Clara acquired eight and a half acres of farmland from Martin and Ann Perlenda that previously had been used as a prune orchard since 1894. Dedicated in 1977, Henry Schmidt Park's existing master plan (Attachment 1) contains a recreation and restroom building, four tennis courts, a basketball court, a softball field, an open grass play area, a playground, an on-site parking lot, picnic areas, and various park amenities. The park is bounded by Los Padres Boulevard to the west, Saratoga Avenue to the south, and residential properties to the north and east. The Facility Condition Assessment (Kitchell, 2018) indicated that the playground and amenities were in poor condition and the building was in fair condition. The playground condition was downgraded to critical and the train-themed play structures were removed due to their unsafe condition.

On February 7, 2023 the City Council approved an agreement with David L. Gates & Associates, Inc. (RTC 23-1532) for engineering services to develop an updated park master plan and playground schematic design including site assessment and community input on the preferred park elements.

On July 18, 2023 (RTC 23-768), the Parks & Recreation Commission received a presentation from David L. Gates & Associates, Inc. (Consultant) on the Project scope and timeline to develop the schematic design. At this meeting the Commission initiated public input on the Henry Schmidt Park Playground Rehabilitation Project.

The public engagement process included a community pop-up input session at the Street Dance on August 4, 2023 on Jackson Street, and at the Sunset Cinema event in the Park on August 11, 2023. In addition to the in-person engagement opportunities, the City hosted an online survey that was available to the public from July 19-August 14. Community input was collected from residents regarding their current recreational uses and important priorities. Input was also solicited on "theme" preferences for the new playground area. All the theme options are built upon the beloved train identity associated with the existing play area. The engagement process ultimately included approximately 850 participants/responses.

Participants stated that the top five (5) activities they engaged in at Henry Schmidt Park were walking (52%), playing on the playground (46%), picnic in the park (38%), enjoying nature (36%) and

engaging in group gatherings/celebrations (30%). Respondents prioritized adding shade (64%), renovating and expanding the playground (60%), adding picnic areas (48%), providing more seating areas (47%), and incorporating more lighting (45%) for park rehabilitation. When asked about what specific features should be included for the rehabilitation, the top five (5) features they want to see were playground equipment (57%), a looped walking path (51%), site furnishings (50%), a large, shaded group picnic area (48%), and several smaller picnic areas (46%). As for the theme of the playground, respondents narrowly favored the “Train Depot” theme (35%). They also identified preferences for specific play activities, including sensory play “B” (80%), brachiating “B” (65%), sliding “B” (63%), and spinning “B” (62%).

## **DISCUSSION**

At the regular Parks & Recreation Commission meeting on November 21 the Commission will receive a presentation from the Consultant on two (2) train themed schematic design options. Both designs achieve implementation of a Park Master Plan that enhances existing park amenities and expands the playground and picnic areas to accommodate the community interests. The Commission will consider the options.

The updated Henry Schmidt Park Master Plan (Plan) concept reflects the City’s guiding principles, and the input from the community, incorporating shade, more seating, additional picnic areas, a looped walking path, and enhanced fitness stations and a new nature destination playground. The Plan does not alter the existing recreation building or restrooms, tennis courts, ball field, basketball courts or most existing trees. The parking lot is proposed to be resurfaced and will add two stalls. The proposed design enhances connections between the various park activities. The proposed entry plaza, with permeable pavers, in the southeast corner of the park creates a clear direct path and view of the playground from the parking lot, providing an improved pedestrian connection to the playground and through the park space. The addition of a looped walking path connects visitors to a new entry node in the northeast corner and playground. This looped walking path links the existing fitness stations along the pathway. A few pieces of the existing fitness equipment at the park would be removed and replaced with the newly proposed group fitness stations. The design includes the following:

- A new entry plaza with permeable pavers designed with an orchard grid;
- New play area (two concept options provided);
- New sand play area;
- New covered group picnic area;
- New small group picnic area;
- New drought-tolerant plantings;
- New sidewalk;
- New pathway (previously constructed);
- New entry node;
- New pervious decomposed granite path to the fitness stations;
  
- New group fitness stations (removing existing fitness elements);
- Resurfaced and striped parking lot;
- Upgraded exterior light pole and fixture; and
- Preserving existing trees and athletic amenities (tennis courts, ball field).

Two playground design options have been developed (Attachment 2) for the Commission's consideration. Each option meets the City Parks & Recreation Department's park amenities and design criteria, adheres to code compliance requirements, and addresses the public input to date. The two concepts reflect the community's preference for a "Train Depot" theme and incorporate the key elements of play most desired by the community. Option 1 uses a modern interpretation of train theme. Option 2 has a more historic character. Both Option 1 and Option 2 provide:

- Inclusive playground design;
- 7 elements of play for both age 2-5 and age 6-12 play areas;
- Train Depot theme;
- Train engine play element;
- Iconic water tower play element;
- Train station design with ticket booth play element;
- Accessibility to the new play area;
- Shade elements (trees and shade canopies);
- Both options use sustainable/durable materials;
- PIP (poured-in-place rubberized play surfacing) and engineered wood fiber surfacing.

The differences between Option 1 and Option 2 are as follows:

**Option 1** has a compact playground at 7,300 square feet with play elements having more vertical components. It contains two train engine play elements, one in each age group area. It hosts an iconic water tower design that incorporates playful artwork. This water tower design is taller than the one proposed in Option 2. It has a swing set in both 2-5 and 6-12 play areas.

**Option 2** also has a train play element in each area. The play equipment is more horizontal and spreads across approximately 8,200 square feet. It contains one train engine play structure in the 2-5 age group area. Its water tower design reflects a historic character. Option 2 includes a train depot station archway that is not provided in Option 1.

Each option is evaluated for its play value. A play value assessment identifies the level of change, level of skill (beginner, intermediate, and advanced) each piece of equipment requires, and the number of users (each piece can accommodate simultaneously - capacity). The assessment evaluates both age groups, 2-5 and 6-12, separately and in combination. Play features are categorized per City of Santa Clara's 7 elements of play. Inclusive play elements are also quantified.

Once the Phase 1 design process is complete and Council has approved a revised park site master plan and preferred playground schematic design, the City will undertake Phase 2 of the Project, which will include the development of the construction plans according to the approved schematic design, meeting all current regulations and funding nexus requirements such as increased capacity and or new amenities, and the construction of the Project. The scope of work for Phase II of the Project will depend on the results of Phase I.

### **Measure R Compliance**

The recommendation for approval of an update to the Henry Schmidt Park Master Plan may be subject to Measure R. In November 2016, voters passed Measure R, which added Section 714.1

Protection of Parkland and Public Open Space to the City Charter. Measure R prohibits selling, leasing, or otherwise disposing of parkland for a period of one hundred eighty (180) days or more, and also prohibits its use from changing, being abandoned, or discontinued without such sale, lease, disposal or changed use having first been authorized or ratified by a two-thirds majority vote of the electorate during a general municipal election for that purpose. Measure R also prohibits changes in park use for over 180 days without a majority vote of the electorate and substantial building, construction, reconstruction, or development upon dedicated parkland except pursuant to ordinance subject to referendum. The referendum process is set forth in the Elections Code.

The Henry Schmidt Park Master Plan update and the playground schematic design, if approved, will include changes to the existing park that may be considered as “substantial building, construction, reconstruction, or development.” The approval of the proposed site master plan, playground schematic design and subsequent park rehabilitation project will require an ordinance in order to comply with Measure R that will be recommended for the Council’s consideration to be introduced by reference. It does not include a sale, lease, disposal, or change in use requiring a majority vote of the electorate. Therefore, staff recommends that the Commission recommend that Council approve the Henry Schmidt Park Master Plan update, preferred playground schematic design and introduce an ordinance (Attachment 3) to ensure compliance with Measure R. The ordinance will be introduced at one meeting and return to Council at a second meeting for adoption in accordance with City Charter sections 808 and 812.

### **ENVIRONMENTAL REVIEW**

This action is for design professional services and the action being considered does not constitute a “project” within the meaning of the California Environmental Quality Act (“CEQA”) Guidelines section 15378 because it does not pose a potential for resulting in either a direct physical change in the environment or a reasonably foreseeable indirect physical change in the environment.

### **FISCAL IMPACT**

The Capital Improvement Program Budget for FY2022/23 includes project 3195 Henry Schmidt Park Playground Rehabilitation with funding in the amount of \$235,000. The outreach and design agreement with Gates and Associates were approved by Council on February 7, 2023 for \$109,566. Additional funding will be needed for Phase 2 for design development, bid, and construction, which will be requested at the end of Phase 1 based upon the approved schematic design and project scope.

### **COORDINATION**

This report has been coordinated with the Parks & Recreation Department, the Public Works Department, and the Finance Department.

### **PUBLIC CONTACT**

Public contact was made by posting the Parks & Recreation Commission agenda on the City’s official-notice bulletin board outside City Hall Council Chambers. A complete agenda packet is available on the City’s website and in the City Clerk’s Office at least 72 hours prior to a Regular Meeting and 24 hours prior to a Special Meeting. A hard copy of any agenda report may be requested by contacting the City Clerk’s Office at (408) 615-2220, email [clerk@santaclaraca.gov](mailto:clerk@santaclaraca.gov) or at the public information desk at any City of Santa Clara public library.

**RECOMMENDATION**

Make a recommendation to Council on the preferred park master plan and schematic design for Henry Schmidt Park and Playground Rehabilitation Project

Prepared by: Kimberly Castro, Recreation Manager

Approved by: Dale Seale, Acting Director of Parks & Recreation

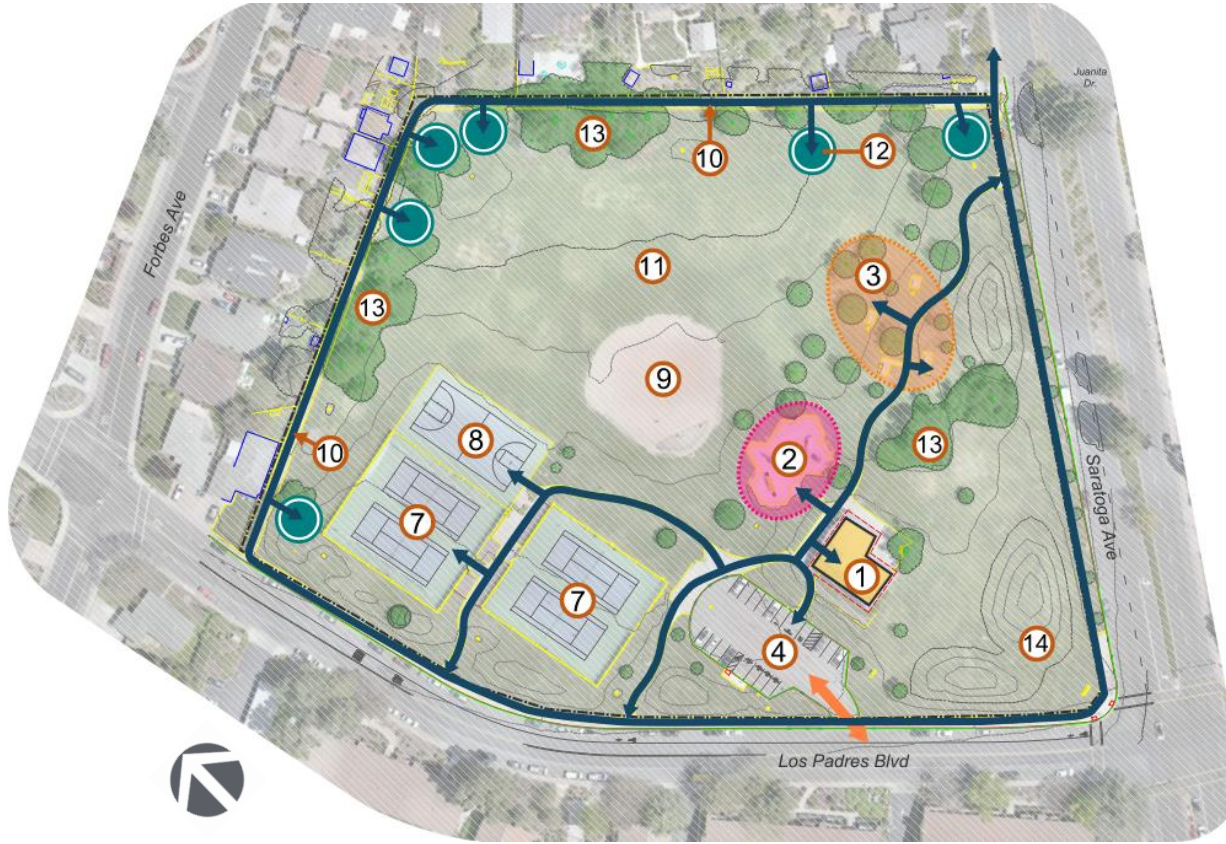
**ATTACHMENTS**


1. Existing Master Plan for Henry Schmidt Park
2. Presentation on Henry Schmidt Park Playground Rehabilitation Project - Gates & Associates
3. Measure R Draft Ordinance





# Existing Master Plan



- ① Community Room & Public Restroom Facility
- ② Play Area
- ③ Picnic Area
- ④ Parking Lot
- ⑤ Park Lighting
- ⑥ Site Furnishings
- ⑦ Tennis Court
- ⑧ Basketball Court
- ⑨ Softball Field
- ⑩ Loop Path
- ⑪ Multi-use Meadow
- ⑫ Fitness Station 
- ⑬ Existing Tree Grove
- ⑭ Existing Grassy Berm



# **Parks & Recreation Commission**

**Preferred Park Master Plan and  
Schematic Design Consideration  
for Henry Schmidt Park and  
Playground Rehabilitation Project  
Project Presentation**

**23-1366**

**November 21, 2023**



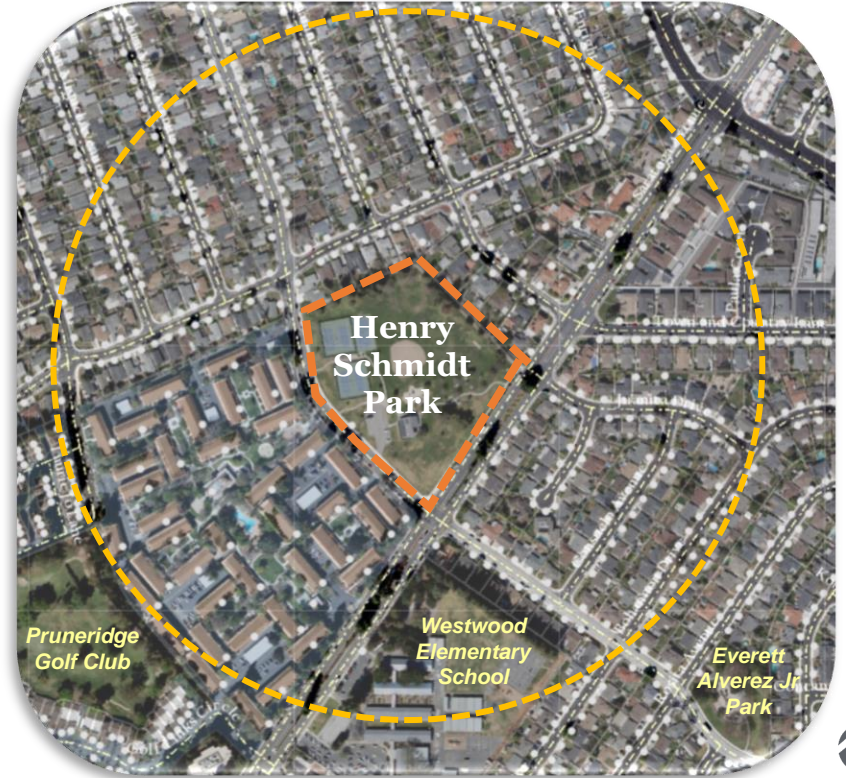
# Purpose of Presentation

- Review Community Input to date
  - Pop-up Events
  - On-line survey
- Introduce Henry Schmidt Park Master Plan Update
- Introduce Playground Design Options 1 and 2
- Receive Commission and Community Input
- Make recommendation to Council for approval.



# Background

- September 2013 – Council Goal: Enhance community sports & recreational and arts assets.
- January 2018 – Facility Condition Assessment Report
- February 2023– Gates + Associates Design Contract
- April 2023 – Project kick-off
- July 18, 2023 – 1<sup>st</sup> PRC Meeting
- July 19 to August 14, 2023 – Online Survey
- August 4 & 11, 2023 – Pop-up Events
- November 21, 2023 – 2<sup>nd</sup> PRC Meeting
- TBD – Council Review/Approval



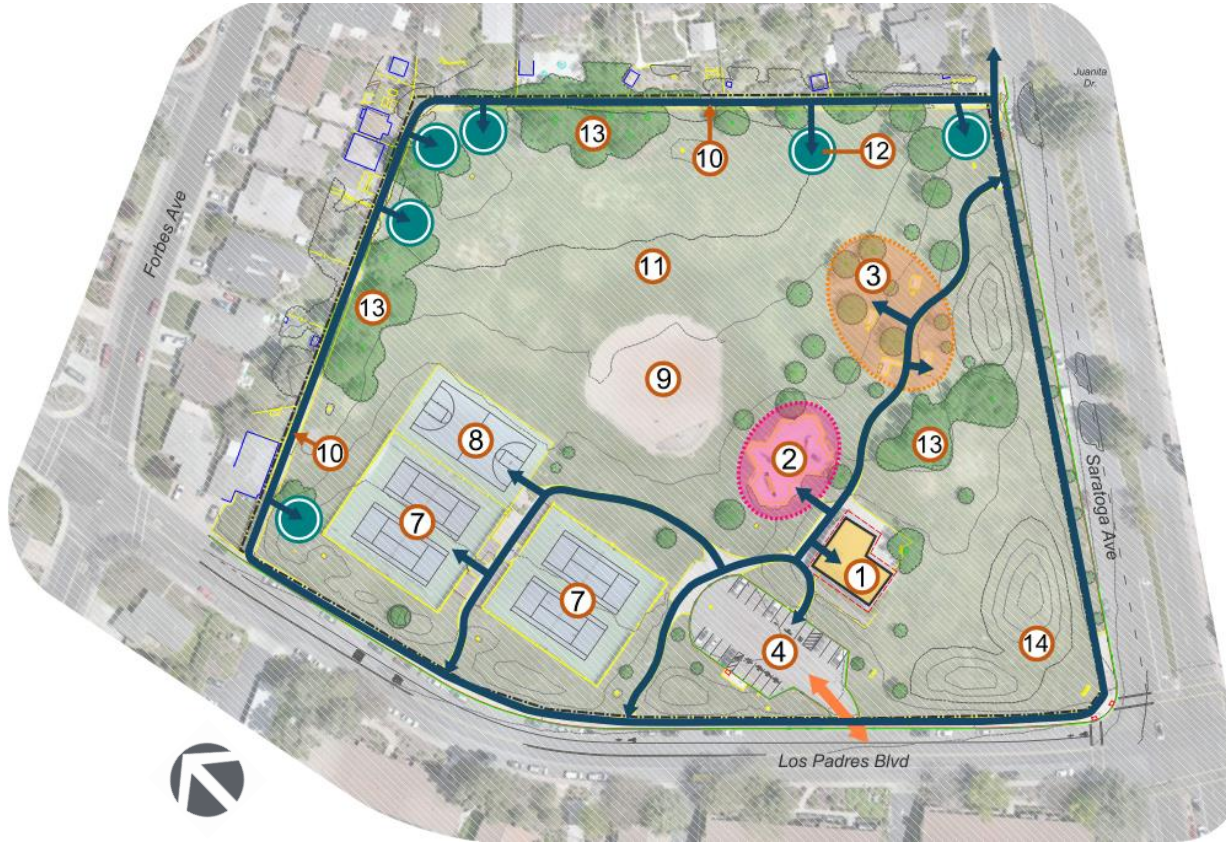



# Project Objectives

- Use research based best practices and comply with all current Codes.
- Incorporate principles of inclusive playground design in the individual elements and the overall site plan.
- Incorporate seven elements of play (balancing, swinging, sliding, climbing, brachiating spinning, and running/free play) at the beginner, intermediate and advanced levels of play.
- Increase playground capacity while maintaining historical train theme of the existing park.
- Provide “age friendly” (multigenerational) spaces.
- Integrate nature and habitat (California native, drought resistant palate) into play environments.
- Provide outreach/education and master planning with residents and community partners.
- Address safe routes to parks (system connectivity) and American Disability Act (ADA) requirements within the park.
- Be sustainable (in materials, construction, life cycle, operations, and maintenance)



# Existing Master Plan



- ① Community Room & Public Restroom Facility
- ② Play Area
- ③ Picnic Area
- ④ Parking Lot
- ⑤ Park Lighting
- ⑥ Site Furnishings
- ⑦ Tennis Court
- ⑧ Basketball Court
- ⑨ Softball Field
- ⑩ Loop Path
- ⑪ Multi-use Meadow
- ⑫ Fitness Station 
- ⑬ Existing Tree Grove
- ⑭ Existing Grassy Berm



# Community Input

## What do you enjoy doing when you visit the park?

### Top 5 Activities:

- Walk (52%)
- Play on the Playground (46%)
- Picnic at the Park (38%)
- Enjoy Nature (36%)
- Group Gatherings/Celebrations (30%)





# Community Input

What park areas are important to you for the rehabilitation of the project?

## Top 5 Areas:

- Shade (64%)
- Playground – Renovate and Expand(60%)
- Picnic Areas(48%)
- Seating Areas (47%)
- Lighting (45%)





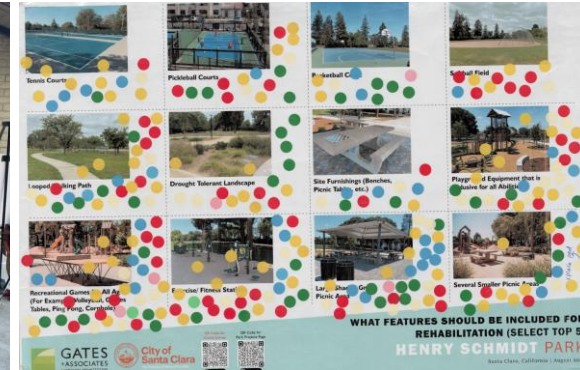


# Community Input

## Which features should be included for the rehabilitation?

### Top 5 Features:

- Playground Equipment (57%)
- Looped Walking Path(51%)
- Site Furnishings (50%)
- Large Shaded Group Picnic Area (48%)
- Several Smaller Picnic Areas (46%)





# Community Input

## Train Theme:



Train Depot Theme



**1. Train Depot: 35%**



Woodland Train Theme



**2. Woodland Train: 31%**



Whimsical Train Theme

**3. Whimsical Train: 34%**



# Community Input – 7 Elements of Play



Balancing Play - a



Balancing Play - b



Balancing Play - c

**Balancing “c” – 48%**



Brachiating Play - a



Brachiating Play - b



Brachiating Play - c

**Brachiating “b” – 65%**



Climbing Play - a



Climbing Play - b



Climbing Play - c

**Climbing “c” – 54%**



# Community Input – 7 Elements of Play



Sliding Play - a



Sliding Play - b



Sliding Play - c

Sliding “b” – 63%



Spinning Play - a



Spinning Play - b



Spinning Play - c

Spinning “b” – 62%



Swinging Play - a



Swinging Play - b



Swinging Play - c

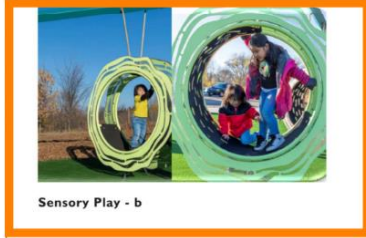
Swinging “b” – 40%



## Community Input – 7 Elements of Play



Sensory Play - a



Sensory Play - b



Music Play - a



Music Play - b



Music Play - c

**Sensory Play “b” – 80%**

**Music Play “b” – 45%**



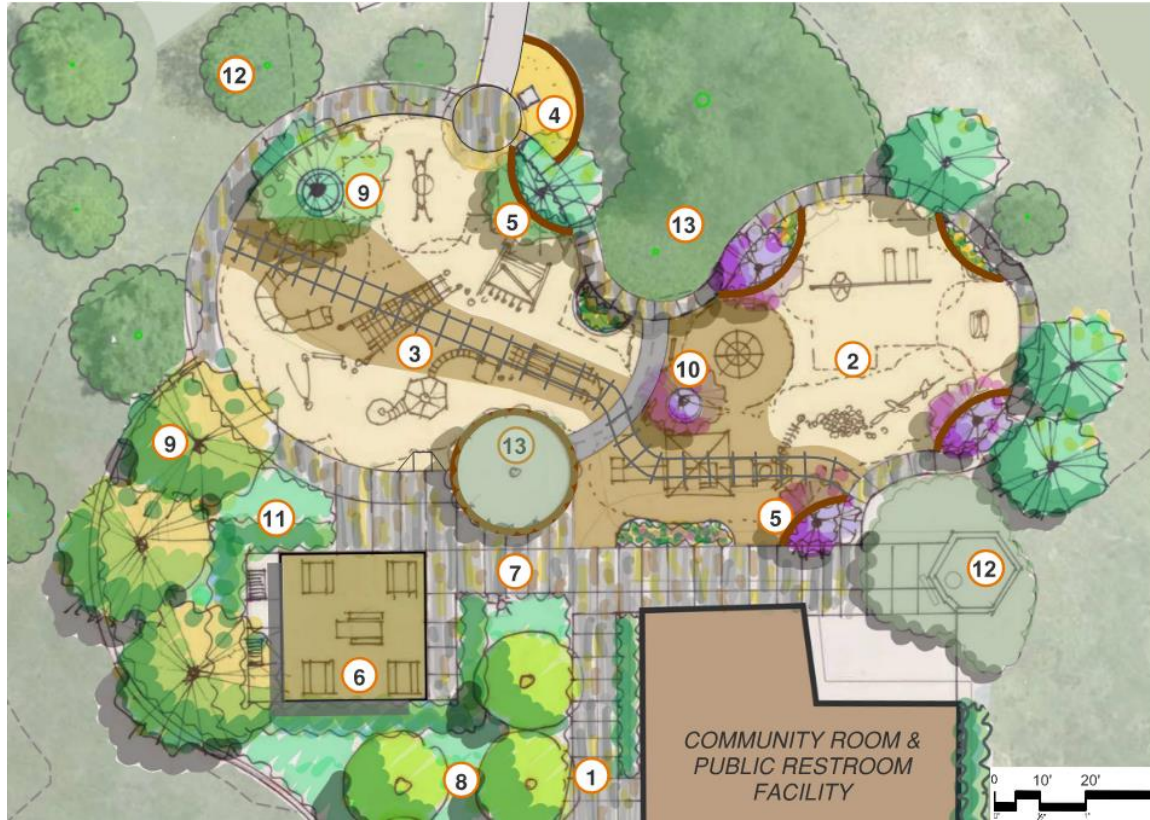
# Henry Schmidt Park – Master Plan Update



- 1** NEW ENTRY PLAZA (PERMEABLE PAVERS) WITH ORCHARD GRID
- 2** NEW PLAY AREA (7,200 - 8,300 SF)
- 3** NEW SAND PLAY AREA
- 4** NEW COVERED GROUP PICNIC AREA
- 5** NEW SMALL GROUP PICNIC AREA
- 6** INDIVIDUAL PICNIC AREA
- 7** NEW DROUGHT TOLERANT PLANTINGS
- 8** NEW SIDEWALK
- 9** NEW PATHWAY (PERVIOUS CONC.)
- 10** NEW ENTRY NODE
- 11** NEW PERVIOUS DG PERIMETER WALKING PATH
- 12** NEW DG PATH TO FITNESS STATIONS
- 13** NEW GROUP FITNESS STATIONS
- 14** EX. FITNESS TO BE REMOVED
- 15** RESURFACED & STRIPED PARKING LOT
- 16** UPGRADE EX. LIGHT POLE/FIXTURE
- 17** EXISTING TREE TO REMAIN



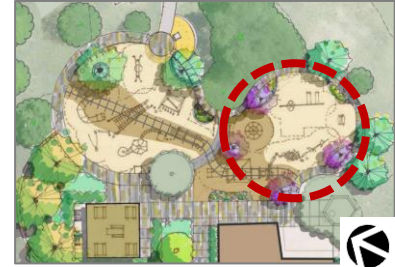
# Playground Schematic Design – Train Depot Option 1



- 1 ENTRY CORRIDOR
- 2 PLAY AREA - AGE 2-5
- 3 PLAY AREA - AGE 6-12
- 4 SAND PLAY
- 5 TREE CUT-OUT WITH SEATING AND ACCENT PLANTINGS
- 6 COVERED GROUP PICNIC AREA WITH BBQ
- 7 PLAZA WITH PERMEABLE PAVERS
- 8 ORCHARD GRID
- 9 SHADE CANOPY TREES
- 10 ACCENT TREES
- 11 NEW DROUGHT TOLERANT PLANTINGS
- 12 EXISTING TREE TO REMAIN



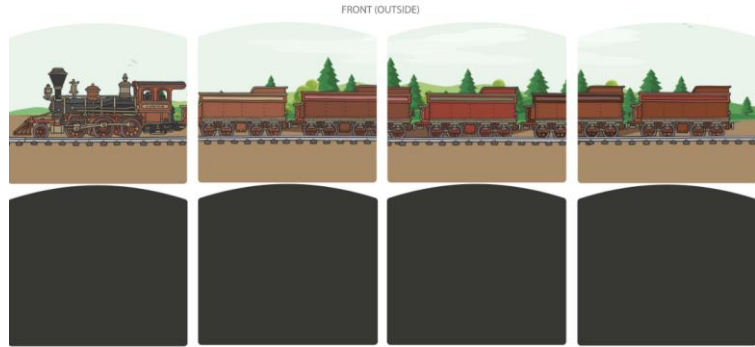
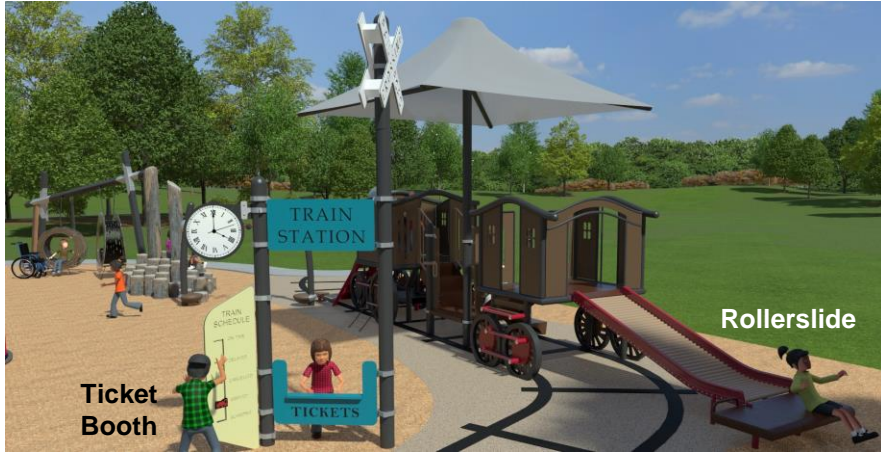
# Playground Option 1: Age 2-5







# Playground Option 1: Age 2-5





# Playground Option 1: Age 6-12





# Playground Option 1: Age 6-12





## Playground Option 1: Elements of Play



#1 Sliding #2 Balancing #3 Brachiating #4 Spinning #5 Climbing #6 Swinging #7 Running



# Playground Option 1: Play Value Table

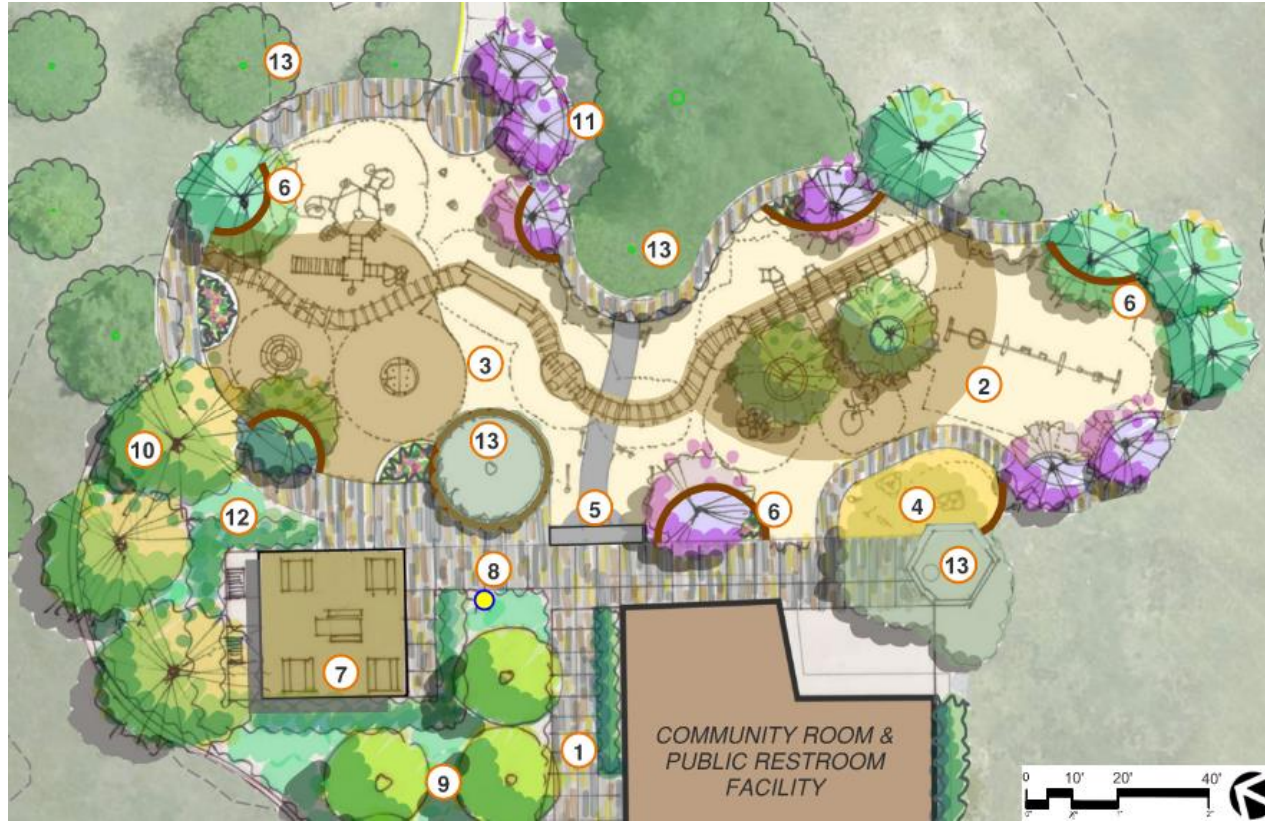
Elements of Play	Ages 2-5	Level of Play	* Proposed Capacity	Ages 6-12	Level of Play	* Proposed Capacity	Total Capacity
Balancing	1	B=0 I=1 A=0	5	8	B=4 I=3 A=1	23	28
Sliding	1	B=0 I=1 A=0	3	2	B=1 I=0 A=1	8	11
Brachiating	1	B=0 I=0 A=1	3	1	B=0 I=1 A=0	3	6
Spinning	1	B=0 I=1 A=0	12	1	B=0 I=0 A=1	3	15
Climbing	6	B=2 I=2 A=2	20	3	B=0 I=1 A=2	52	72
Swinging	3	B=2 I=1 A=0	4	1	B=0 I=1 A=0	5	9
Running/Free Play	4	N/A	18	8	N/A	20	38
<b>Total:</b>	20		65	23		114	<b>179</b>
<b>Inclusive Play Elements</b>	10	B=5 I=2 A=3	37	13	B=10 I=1 A=2	30	67

Level of Play:

B: Beginner I: Intermediate A: Advanced



## Playground Schematic Design – Train Depot Option 2



- 1 ENTRY CORRIDOR
- 2 PLAY AREA - AGE 2-5
- 3 PLAY AREA - AGE 6-12
- 4 SAND PLAY
- 5 ENTRY PORTAL
- 6 TREE CUT-OUT WITH SEATING AND ACCENT PLANTINGS
- 7 COVERED GROUP PICNIC AREA WITH BBQ
- 8 PLAZA WITH PERMEABLE PAVERS
- 9 ORCHARD GRID
- 10 SHADE CANOPY TREES
- 11 ACCENT TREES
- 12 NEW DROUGHT TOLERANT PLANTINGS
- 13 EXISTING TREE TO REMAIN



## Playground Option 2: Age 2-5



**Horizontal  
Overhead Ladder  
w/ Tree Toppers**

**Ten Spin**

**Slide**

**Curved Low  
Ramp  
Climber**

**Train  
Console w/  
Wheel**

**Train Cow  
Catcher**





## Playground Option 2: Age 2-5



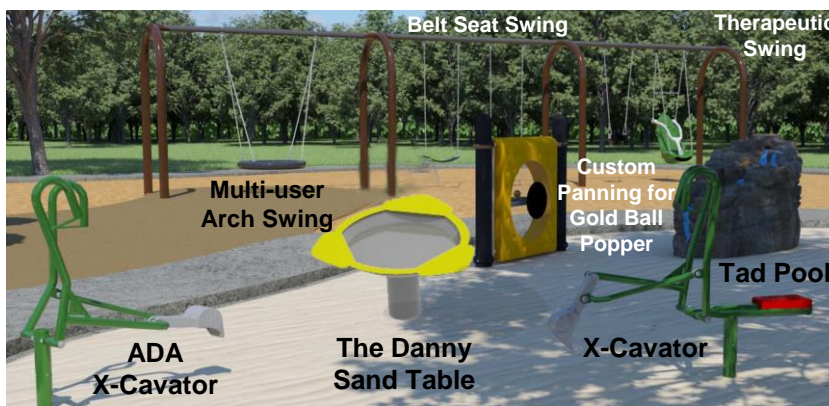
“Henry Schmidt Park” Depot Station Archway



Train Cow  
Catcher

Interactive Train  
Spinning Wheel  
Tunnel

Ball Post  
Climber



Belt Seat Swing

Therapeutic  
Swing

Multi-user  
Arch Swing

Custom  
Panning for  
Gold Ball  
Popper

Tad Pool

ADA  
X-Cavator

The Danny  
Sand Table

X-Cavator





## Playground Option 2: Age 6-12





## Playground Option 2: Age 6-12



**Custom Water Tower w/ "City of Santa Clara"  
& City Seal**



## Playground Option 2: Elements of Play



- #1 Sliding
- #2 Balancing
- #3 Brachiating
- #4 Spinning
- #5 Climbing
- #6 Swinging
- #7 Running

Henry Schmidt Park



## Playground Option 2: Play Value Table

ELEMENTS OF PLAY	Ages 2-5	Level of Play	Proposed Capacity	Ages 6-12	Level of Play	Proposed Capacity	Total Capacity
Balancing	2	B/I	12	1	A	12	24
Sliding	1	B	2	3	B / A	6	8
Brachiating	1	I/A	4	1	A	12	16
Spinning	1	B/I	10	2	B / I	23	33
Climbing	6	B/I/A	18	7	I / A	26	34
Swinging	5	B/I	8	4	B/I	7	15
Running / Free Play	2		20	1		17	37
Total:	18		74	19		103	177
Inclusive Play Elements	9	B = 3 I = 3 A = 1	23	5	B = 2 I = 2 A = 4	30	53

LEVEL OF PLAY:  
B: Beginner    I: Intermediate    A: Advanced



# Playground Play Value Comparison

Elements of Play	Ages 2-5									Ages 6-12									Total Capacity		
	Quantity			Level of Play		Proposed Capacity			Quantity			Level of Play		Proposed Capacity			Existing	Option 1	Option 2		
	Existing	Option 1	Option 2	Option 1	Option 2	Existing	Option 1	Option 2	Existing	Option 1	Option 2	Option 1	Option 2	Existing	Option 1	Option 2					
Balancing	0	1	2	B = 0 I = 1 A = 0	B / I	0	5	12	1	8	1	B = 4 I = 3 A = 1	A	4	23	12	4	28	24		
Sliding	0	1	1	B = 0 I = 1 A = 0	B	0	3	2	1	2	3	B = 1 I = 0 A = 1	B / A	2	8	6	2	11	8		
Brachiating	0	1	1	B = 0 I = 0 A = 1	I / A	0	3	4	0	1	1	B = 0 I = 1 A = 0	A		3	12		6	16		
Spinning	0	1	1	B = 0 I = 1 A = 0	B / I	0	12	10	0	1	2	B = 0 I = 0 A = 1	B / I		3	23		15	33		
Climbing	0	6	6	B = 2 I = 2 A = 2	B / I / A	0	20	18	1,1	3	7	B = 0 I = 1 A = 2	I / A	8	52	26	8	72	34		
Swinging	2	3	5	B = 2 I = 1 A = 0	B / I	2	4	8	0	1	4	B = 0 I = 1 A = 0	B / I		5	7	2	9	15		
Running/ Free Play	3	4	2	N/A		12	18	20	1	8	1	N/A		12	20	17	24	38	37		
<b>Total:</b>	<b>5</b>	<b>20</b>	<b>18</b>			<b>14</b>	<b>65</b>	<b>74</b>	<b>4</b>	<b>23</b>	<b>19</b>			<b>20</b>	<b>114</b>	<b>103</b>	<b>34</b>	<b>179</b>	<b>177</b>		
<b>Inclusive Play Elements:</b>	0 not accessible	10	9	B = 5 I = 2 A = 3	B = 3 I = 3 A = 1		37	23	0 not accessible	13	5	B = 10 I = 1 A = 2	B = 2 I = 2 A = 4		30	30	0	67	53		



# Play Components Comparison: Water Tower

## Option 1



## Option 2



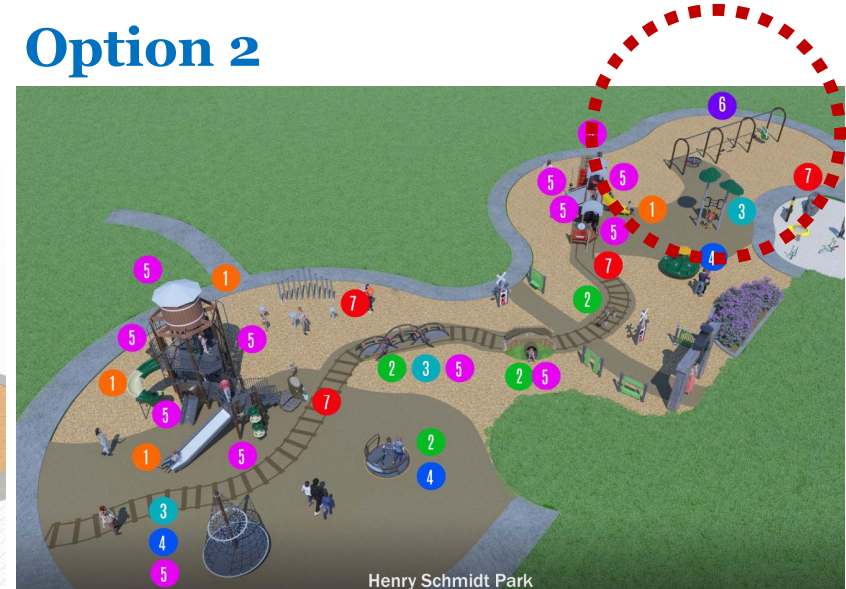


# Play Components Comparison: Swing Zone

## Option 1



## Option 2





# Project Schedule/ Next Step

**Apr. 17, 2023**

**Project  
Kick-off**

**Jul. 18, 2023**

**1<sup>st</sup> PRC  
Meeting:  
On-line Survey  
Opens on July 19**

**Aug. 4, 2023**

**1<sup>st</sup> Outreach:  
Street Dance  
at Franklin  
Square**

**Aug. 11, 2023**

**2<sup>nd</sup> Outreach:  
Cinema Night  
at Henry  
Schmidt Park**

**Aug. 14, 2023**

**Online Survey  
Ends**

**Nov. 21, 2023**

**2<sup>nd</sup> PRC  
Meeting**

**You  
Are  
here**





# Parks & Recreation Commission

- Comments, Feedback & Questions?
- Recommendation to Council
  - Henry Schmidt Park Master Plan Update
  - Preferred Playground Schematic Design  
Option 1 or 2

**ORDINANCE NO. \_\_\_\_\_**

**AN ORDINANCE OF THE CITY OF SANTA CLARA,  
CALIFORNIA, APPROVING THE HENRY SCHMIDT PARK  
MASTER PLAN UPDATE IN ACCORDANCE WITH CITY  
CHARTER SECTION 714.1**

**BE IT ORDAINED BY THE CITY OF SANTA CLARA AS FOLLOWS:**

**WHEREAS**, the Henry Schmidt Park (“Park”), located at 555 Los Padres Blvd. was dedicated as 8.50 acres of parkland (APN 294-05-018) in 1977; **WHEREAS**, in 2018 the Facility Condition Index Report rated the Park site as “critical”, the building as “poor”, and the playground was given a rating of “D”;

**WHEREAS**, the Park was prioritized for rehabilitation and funding for the Henry Schmidt Park Playground Rehabilitation Project #3195 (“Project”) was approved by Council in the City’s Biennial Capital Improvement Program (CIP) FY2022/23;

**WHEREAS**, the Park Master Plan Update will include renovation, expansion, relocation, new construction, and preservation of existing park amenities;

**WHEREAS**, the voters of the City of Santa Clara passed Measure R in 2016, which added section 714.1 to the City Charter, which prohibits substantial building, construction, reconstruction, or development of parks and recreation facilities except pursuant to ordinance subject to referendum;

**WHEREAS**, the Park Project improvements constitutes as substantial building, construction, reconstruction and/or development, and is subject to Measure R; and,

**WHEREAS**, the City Council desires to approve the Park Project improvements by ordinance in accordance with City Charter section 714.1.

**NOW THEREFORE, BE IT FURTHER ORDAINED BY THE CITY OF SANTA CLARA,  
AS FOLLOWS:**

**SECTION 1:** That the City Council hereby approves the building, construction, reconstruction and/or development in accordance with the Henry Schmidt Park Master Plan Update and the Playground Schematic Design, attached hereto and incorporated by this reference, and in accordance with City Charter section 714.1.

**SECTION 2: Savings clause.** The changes provided for in this ordinance shall not affect any offense or act committed or done or any penalty or forfeiture incurred or any right established or accruing before the effective date of this ordinance; nor shall it affect any prosecution, suit or proceeding pending or any judgment rendered prior to the effective date of this ordinance. All fee schedules shall remain in force until superseded by the fee schedules adopted by the City Council.

**SECTION 3:** This Ordinance shall not be codified in the Santa Clara City Code.

**SECTION 4: Effective date.** This ordinance shall take effect thirty (30) days after its final adoption; however, prior to its final adoption it shall be published in accordance with the requirements of Section 808 and 812 of “The Charter of the City of Santa Clara, California.”

PASSED FOR THE PURPOSE OF PUBLICATION this \_\_\_\_ day of \_\_\_\_\_ 2023, by the following vote:

AYES:	COUNCILORS:
NOES:	COUNCILORS:
ABSENT:	COUNCILORS:
ABSTAINED:	COUNCILORS:

ATTEST:

\_\_\_\_\_  
NORA PIMENTEL, MMC  
ASSISTANT CITY CLERK

CITY OF SANTA CLARA

Attachments incorporated by reference:

1. Henry Schmidt Park Master Plan Update
2. Playground Schematic Design



## Agenda Report

23-1211

Agenda Date: 11/21/2023

### REPORT TO PARKS & RECREATION COMMISSION

#### SUBJECT

Receive a Presentation and Provide Feedback on the De La Cruz/Coleman Bikeway Planning Project

#### BACKGROUND

The City of Santa Clara received a Valley Transportation Authority (VTA) Measure B planning grant to develop the De La Cruz Boulevard/Coleman Avenue Bikeway Plan (Plan). The Plan is studying De La Cruz Boulevard from Central Expressway to Lafayette Street/Alviso Street and Coleman Avenue from De La Cruz Boulevard to Brokaw Road (Attachment 1). In December 2022, City Council approved an agreement with Kimley-Horn and Associates, Inc. (Consultant) to assist in the development of the Plan.

The Plan, which is anticipated to be completed in Summer 2024, will identify improvements to complete bicycle network gaps, increase mobility, and make biking more comfortable for people of all ages and abilities for the 1.8-mile project corridor. The Plan also includes reviewing potential options for parking removal. The Plan will ultimately produce a parking study, street design concepts, and a draft and final Project Report that will discuss opportunities and constraints of the potential design options.

It should be noted that this is only a planning level document and does not include design, environmental review, or construction of any alternative. At the completion of the work effort, if Council decides to move forward with a specific alternative, then additional funds would be required to design, bid, and construct the alternative.

#### DISCUSSION

City staff will present draft design concepts for the Class IV bikeway project through an interactive presentation. A Class IV bikeway is a bikeway that is separated by a physical barrier from the roadway travel lanes. The Commission and the public will be invited to ask questions and share feedback on the design concepts (Attachment 2 and 3). The Commission and members of the public may also provide written feedback on the concepts using a survey link, which will be provided during the presentation and available at the project's webpage at [www.SantaClaraCA.gov/BikePedProjects](http://www.SantaClaraCA.gov/BikePedProjects) until November 29 <<http://www.SantaClaraCA.gov/BikePedProjects%20until%20November%2029>>, 2023.

#### **De La Cruz Boulevard/Coleman Avenue Draft Design Concepts**

Two concept alternatives were developed for the project corridor (Refer to Attachment 2, "Corridor Concept A" and "Corridor Concept B" exhibits).

- **Concept A** includes Class IV cycle tracks on each side of De La Cruz Blvd between Central

Expressway and Reed St. At Reed St, the Class IV cycle tracks would transition to a two-way cycle track on the east side of Coleman Ave.

- **Concept B** includes a two-way cycle track along the west side of De La Cruz Blvd between Central Expressway and Martin Ave and Class IV cycle tracks on each side of De La Cruz Blvd between Martin Ave and Reed Street. At Reed Street, the Class IV cycle tracks would transition to a two-way cycle track on the east side of Coleman Avenue.

Each concept exhibit also includes high-level recommendations for intersection improvements to accommodate the proposed bikeway improvements.

### Cross Sections:

Typical cross sections were developed to illustrate existing and concept alternative conditions along the corridor (Refer to Attachment 3). The following cross sections are included in the section maps:

- Section 1: De La Cruz Blvd from Central Expressway to Airport Technology Park
  - Existing (“No Build”) Scenario - Six-travel lanes, raised median, and parking on the west side
  - Section 1A - remove parking on the west side, one-way class IV cycle tracks on each side of the road
  - Section 1B - remove parking on the west side, two-way cycle track on the west side
- Section 2: De La Cruz Blvd from Airport Technology Park to Martin Ave
  - Existing (“No Build”) Scenario - Six-travel lanes, center turn lane, and parking on the west side
  - Section 2A - remove parking on the west side, one-way class IV cycle tracks on each side of the road
  - Section 2B - remove parking on the west side, two-way cycle track on the west side
- Section 3: De La Cruz Blvd from Martin Ave to Reed St
  - Existing (“No Build”) Scenario - Six-travel lanes, center turn lane, and parking on both sides
  - Section 3A - remove parking on the west side, one-way class IV cycle tracks on each side of the road
- Section 4: Northbound Coleman Avenue from Reed Street to South of Tri-Level
  - Existing (“No Build”) Scenario - Two-travel lanes and a paved shoulder
  - Section 4A - two-way cycle track on the east side
- Section 5: Northbound Coleman Avenue from South of Tri-Level to Brokaw Rd
  - Existing (“No Build”) Scenario- Seven-lanes wide, center turn lane, and paved shoulder
  - Section 4A - two-way cycle track on the east side

### Tri-Level:

A detailed investigation was performed to examine the feasibility of designating exclusive space for bicycles on each of the tri-level ramps. It was determined that, for most movements through the tri-level, it is not feasible to implement bicycle facilities without major roadway and bridge reconstruction, given the following factors:

- High vehicle speeds and volumes,
- Limited sight distance,

- Some roadway widths too narrow to provide protected bike lanes,
- Multiple bridge structures,
- Many convergence and divergence points, and
- Many potential conflict points between people biking and autos.

### **ENVIRONMENTAL REVIEW**

The action being considered does not constitute a “project” within the meaning of the California Environmental Quality Act (“CEQA”) pursuant to CEQA Guidelines section 15378(b)(5) in that it is a governmental organizational or administrative activity that will not result in direct or indirect changes in the environment.

### **PUBLIC CONTACT**

Public contact was made by posting the Parks & Recreation Commission agenda on the City’s official-notice bulletin board outside City Hall Council Chambers. A complete agenda packet is available on the City’s website and in the City Clerk’s Office at least 72 hours prior to a Regular Meeting and 24 hours prior to a Special Meeting. A hard copy of any agenda report may be requested by contacting the City Clerk’s Office at (408) 615-2220, email [clerk@santaclaraca.gov](mailto:clerk@santaclaraca.gov) <<mailto:clerk@santaclaraca.gov>> or at the public information desk at any City of Santa Clara public library.

### **RECOMMENDATION**

Receive a presentation and provide feedback on draft design concepts.

Prepared by: Carol Shariat, Principal Transportation Planner, Public Works

Approved by: Dale Seale, Acting Director of Parks & Recreation

### **ATTACHMENTS**

1. Project Study Area
2. Aerial Concepts
3. Section Map Concepts



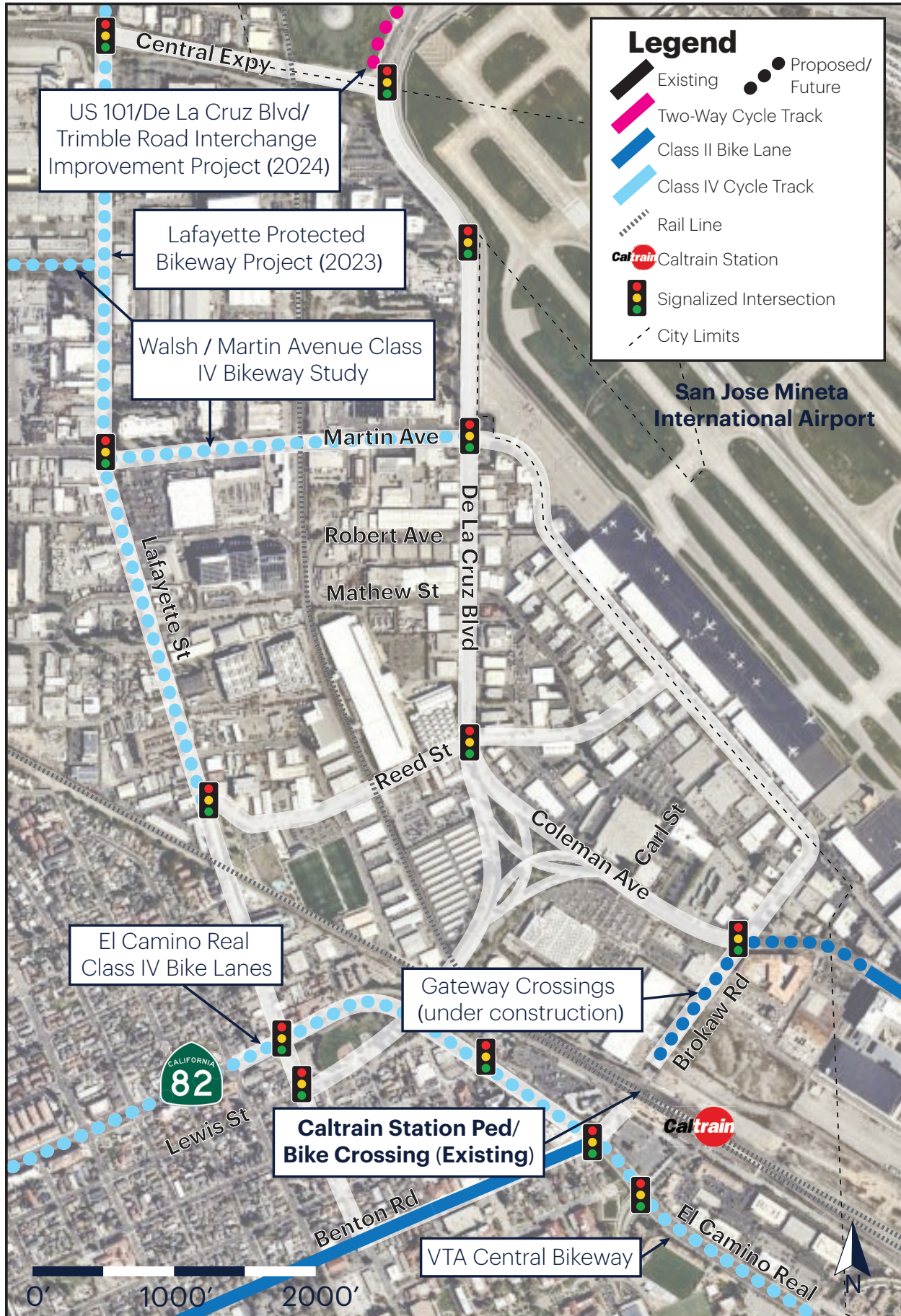


# Existing & Planned Network

De La Cruz Boulevard and Coleman Avenue Bike Planning Project



City of Santa Clara

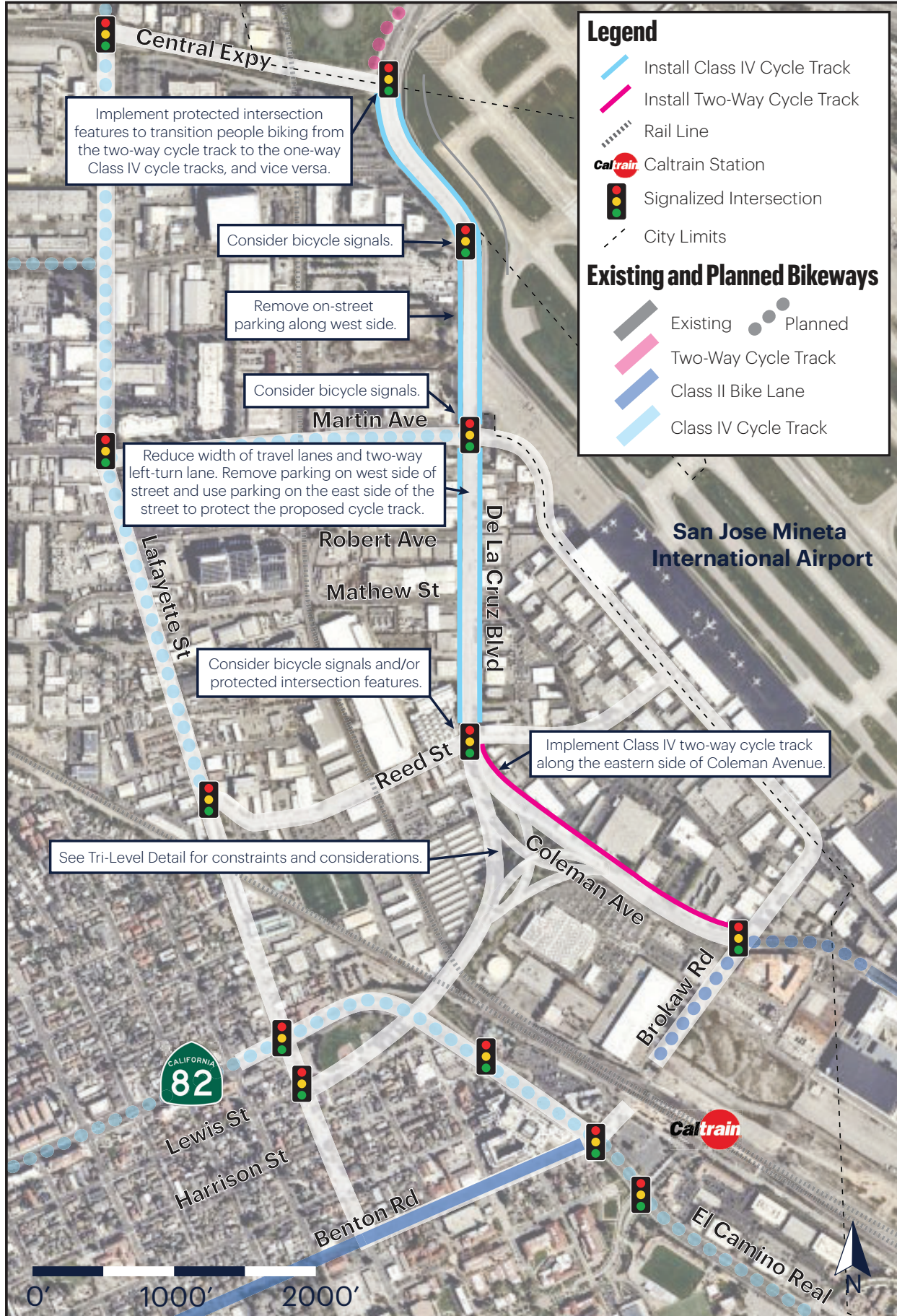


# Corridor Concept A

De La Cruz Boulevard and Coleman Avenue Bike Planning Project



City of Santa Clara

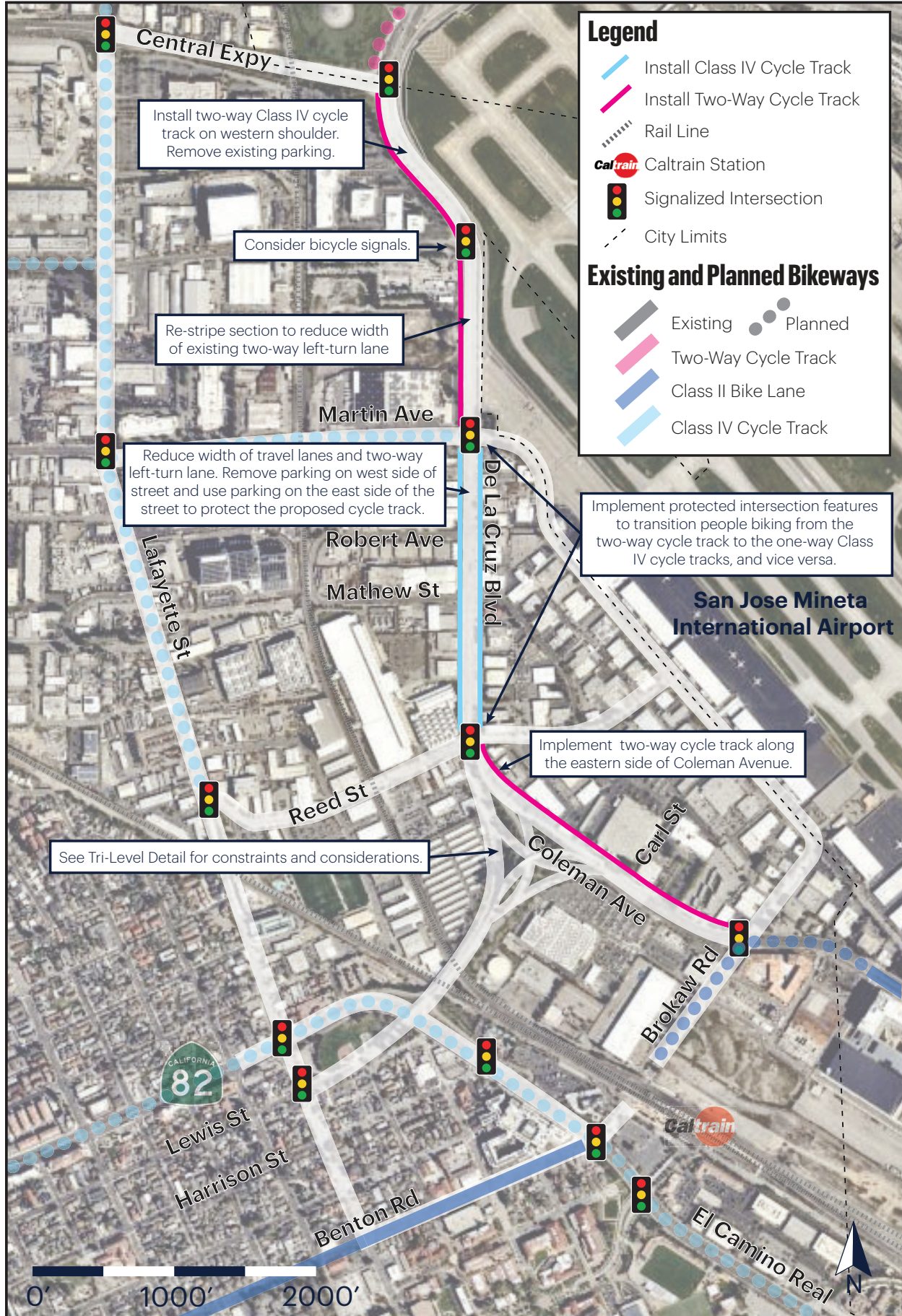


# Corridor Concept B

De La Cruz Boulevard and Coleman Avenue Bike Planning Project



City of Santa Clara

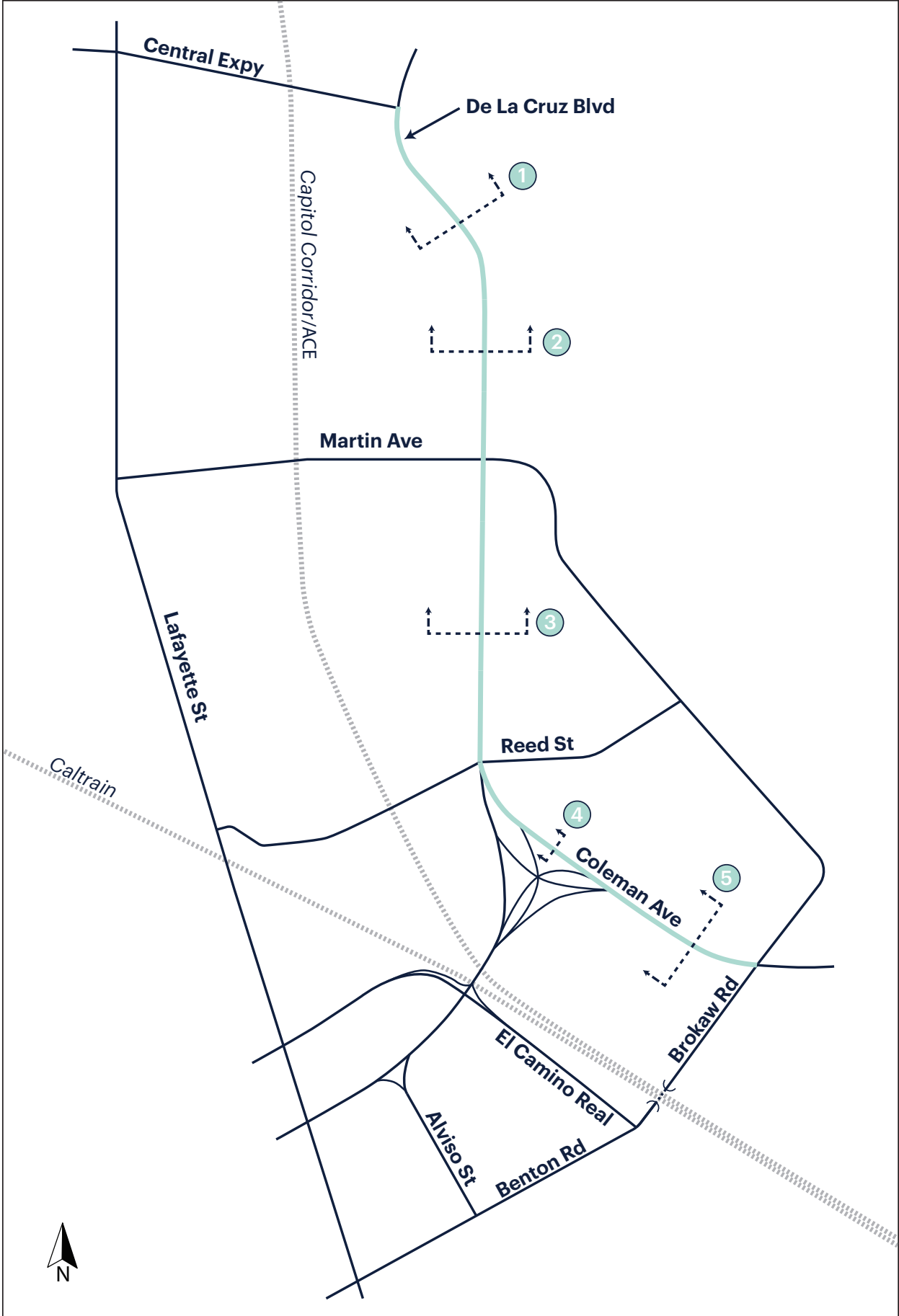


# Section Maps

De La Cruz Boulevard and Coleman Avenue Bike Planning Project



## City of Santa Clara



# Section Maps

## De La Cruz Boulevard and Coleman Avenue Bike Planning Project

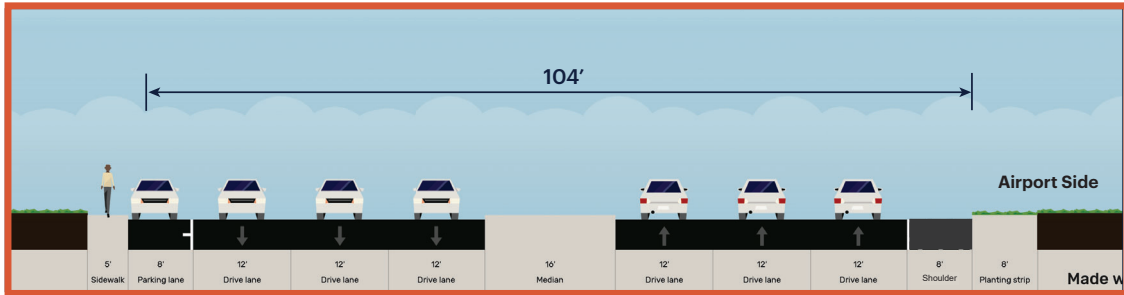


1

### Section 1 - Existing

Travel Lanes:	6 (12')
Bike Lane:	N/A
Median:	16' raised
Buffer:	N/A
Parking:	8' (west side)

De La Cruz Blvd: Central Expressway to Airport Technology Park  
6 lanes, raised median, parking on west side

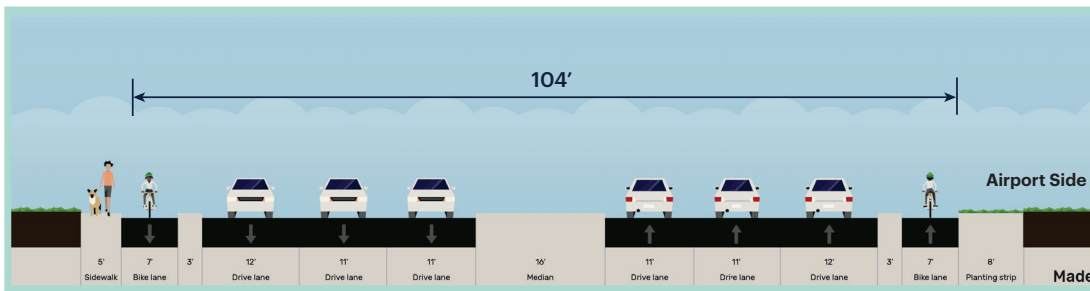


1A

### Section 1 - Concept A

Travel Lanes:	6 (11'-12')
Bike Lane:	7' (Class IV)
Median:	16' raised
Buffer:	3'
Parking:	None

De La Cruz Blvd: Central Expressway to Airport Technology Park  
6 lanes, raised median, remove parking on west side, one-way Class IV protected bike lanes

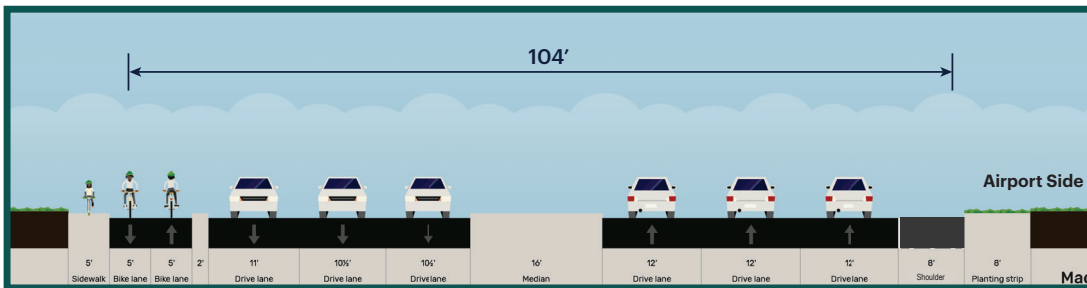


1B

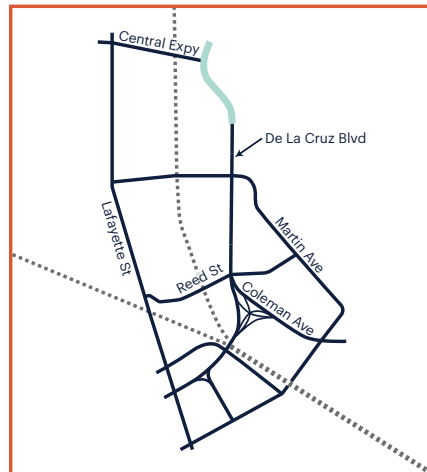
### Section 1 - Concept B

Travel Lanes:	6 (10.5'-11')
Bike Lane:	10' (Class IV two-way)
Median:	16' raised
Buffer:	2'
Parking:	None

De La Cruz Blvd: Central Expressway to Airport Technology Park  
6 lanes, raised median, remove parking on west side, two-way Class IV protected cycle track



Note: Lane widths will be further refined through future design phases.



**1A:** Implement protected intersection features at the intersection of De La Cruz Boulevard and Central Expressway to help safely transition people biking between the planned two-way cycle track\* and one-way Class IV cycle tracks.

\*Assumes implementation of the US 101/De La Cruz Boulevard/Trimble Road Interchange Improvement Project (2024)

# Section Maps

## De La Cruz Boulevard and Coleman Avenue Bike Planning Project

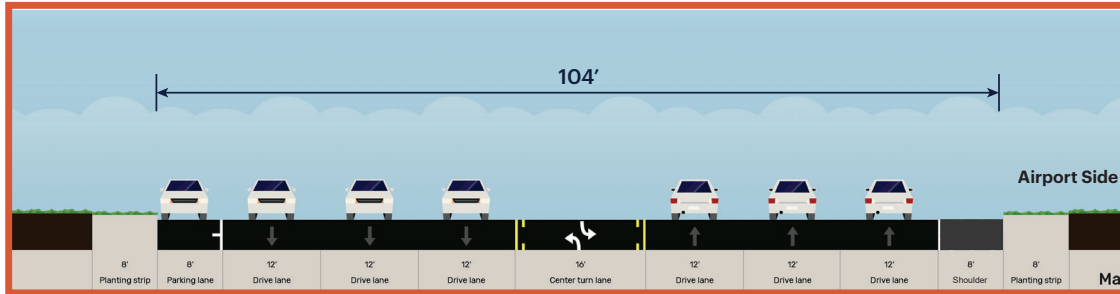


2

### Section 2 - Existing

Travel Lanes:	6 (12')
Bike Lane:	N/A
Median:	16' TWLTL
Buffer:	N/A
Parking:	8' (west side)

De La Cruz Blvd: Airport Technology Park to Martin Avenue  
6 lanes, TWLTL, parking on west side

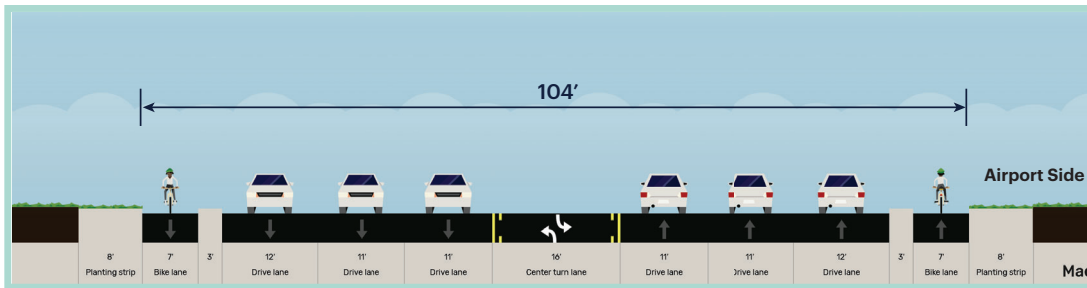


2A

### Section 2 - Concept A

Travel Lanes:	6 (11'-12')
Bike Lane:	7 (Class IV)
Median:	16' TWLTL
Buffer:	3'
Parking:	None

De La Cruz Blvd: Airport Technology Park to Martin Avenue  
6 lanes, TWLTL, remove parking on west side, one-way Class IV protected bike lanes

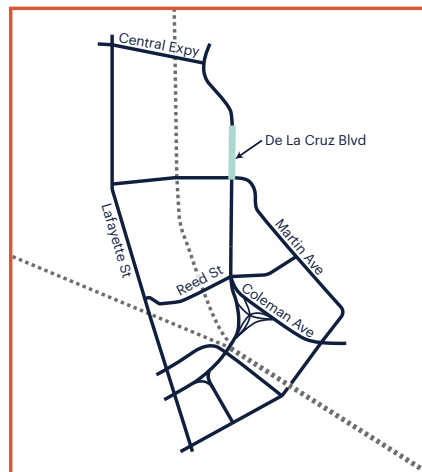
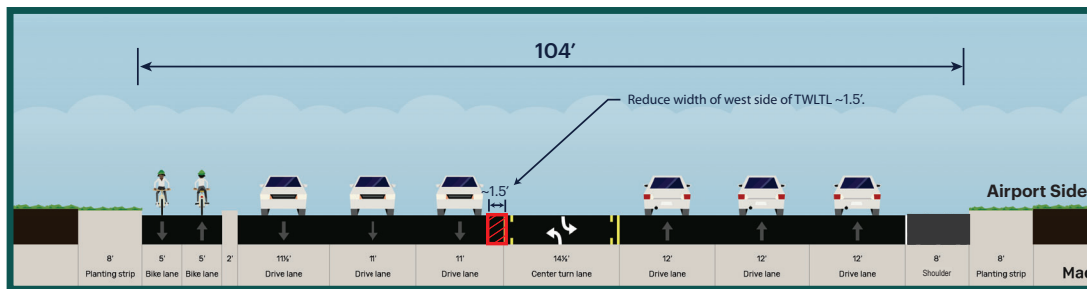


2B

### Section 2 - Concept B

Travel Lanes:	6 (11'-11.5')
Bike Lane:	10' (Class IV two-way)
Median:	14.5' TWLTL
Buffer:	2'
Parking:	None

De La Cruz Blvd: Airport Technology Park to Martin Avenue  
6 lanes, TWLTL, remove parking on west side, two-way Class IV protected cycle track



# Section Maps

## De La Cruz Boulevard and Coleman Avenue Bike Planning Project

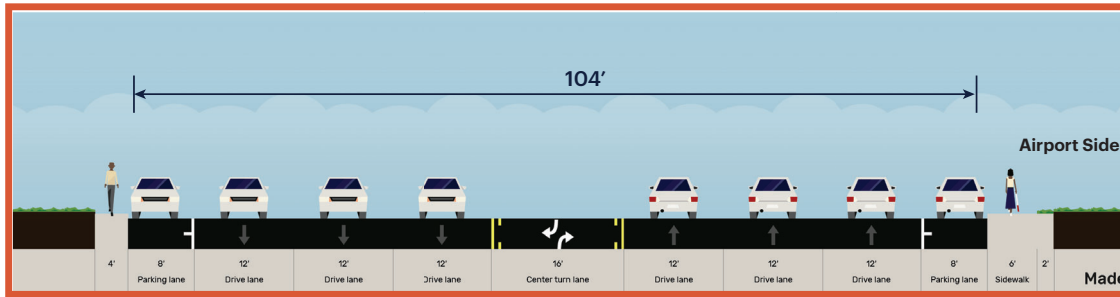


3

### Section 3 - Existing

De La Cruz Blvd: Martin Avenue to Reed Street  
6 lanes, TWLTL, parking on both sides

Travel Lanes:	6 (12')
Bike Lane:	N/A
Median:	16' TWLTL
Buffer:	N/A
Parking:	8' (both sides)

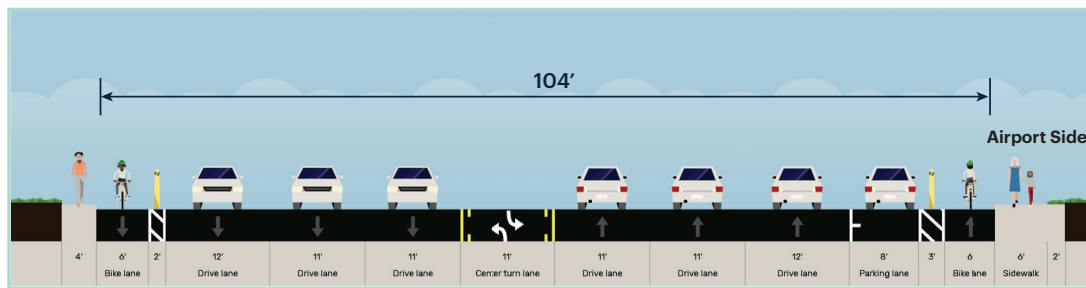


3A

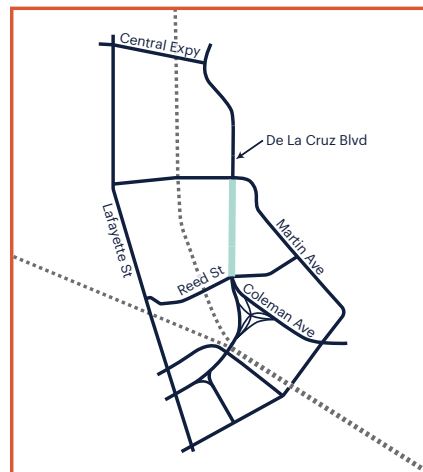
### Section 3 - Concept A

De La Cruz Blvd: Martin Avenue to Reed Street  
6 lanes, TWLTL, remove parking on west side, one-way Class IV protected bike lanes

Travel Lanes:	6 (11'-12')
Bike Lane:	6' (Class IV)
Median:	11' TWLTL
Buffer:	2-3'
Parking:	None



**3A:** Vertical separation elements can help prevent automobiles from parking within the buffer space.



# Section Maps

## De La Cruz Boulevard and Coleman Avenue Bike Planning Project

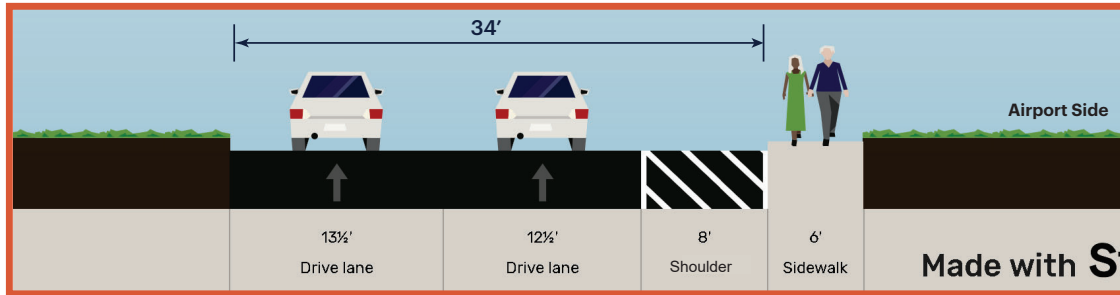


4

### Section 4 - Existing

NB Coleman Avenue: Tri-Level (Reed Street to S of Tri-Level)  
2 lanes, paved shoulder

Travel Lanes:	2 (12.5'-13.5')
Bike Lane:	N/A
Median:	N/A
Buffer:	N/A
Parking:	None

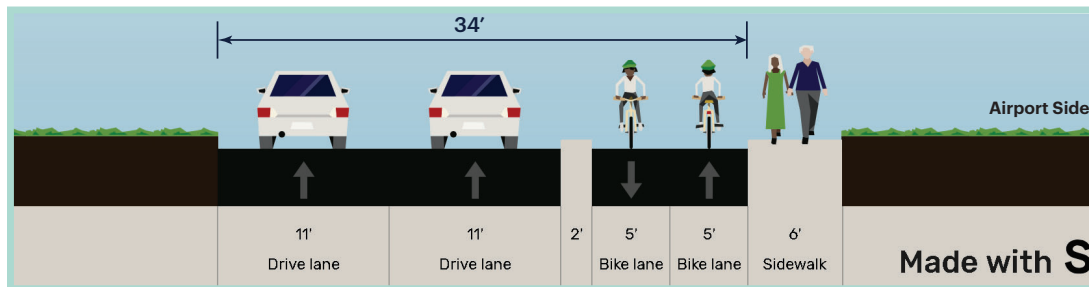


4A

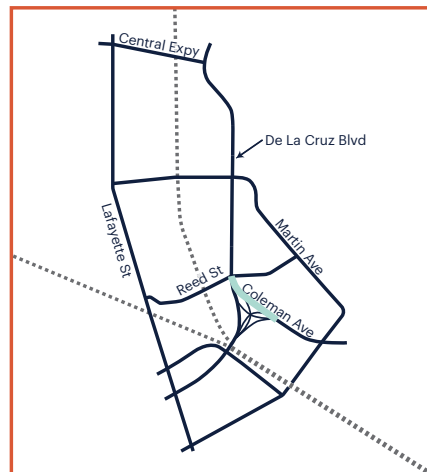
### Section 4 - Concept A

NB Coleman Avenue: Tri-Level (Reed Street to S of Tri-Level)  
2 lanes, two-way Class IV protected cycle track

Travel Lanes:	2 11'
Bike Lane:	10' (two-way Class IV)
Median:	N/A
Buffer:	2'
Parking:	None



**4A:** Implement protected intersection features at the intersection of De La Cruz Boulevard and Reed Street to help safely transition cyclists between the one-way and two-way Class IV facilities.





# Section Maps

## De La Cruz Boulevard and Coleman Avenue Bike Planning Project

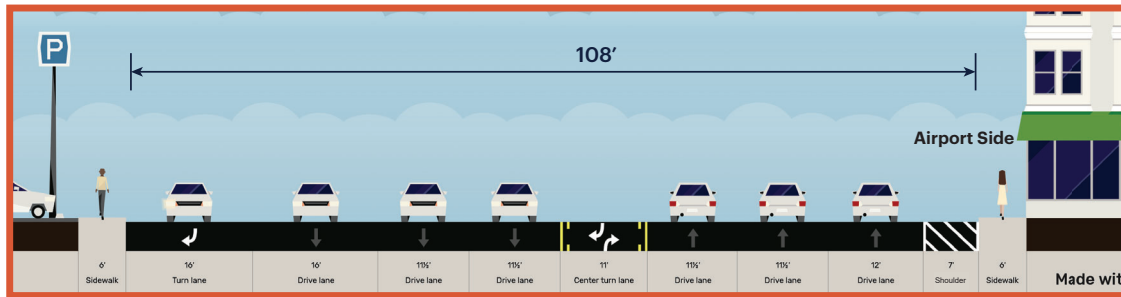


5

### Section 5 - Existing

Coleman Avenue: S of Tri-Level to Brokaw Road  
7 lanes, TWLTL, paved shoulder

Travel Lanes:	7 (11.5'-16')
Bike Lane:	N/A
Median:	11' TWLTL
Buffer:	N/A
Parking:	None

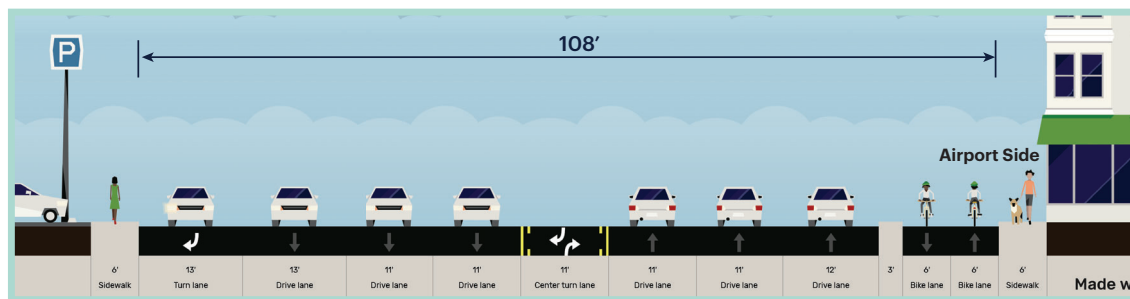


5A

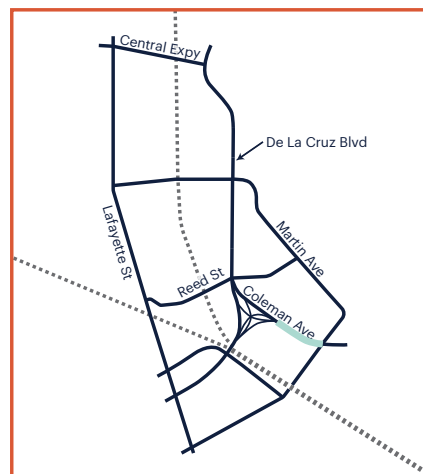
### Section 5 - Concept A

Coleman Avenue: S of Tri-Level to Brokaw Road  
7 lanes, TWLTL, two-way Class IV protected cycle track

Travel Lanes:	7 (11'-13')
Bike Lane:	12' (two-way Class IV)
Median:	11' TWLTL
Buffer:	3'
Parking:	None



**5B:** If plans to implement Class II bike lanes on Coleman south of Brokaw move forward, consider a protected intersection at the intersection of Coleman Avenue and Brokaw Road to transition riders between one- and two-way facilities.





## Agenda Report

23-1369

Agenda Date: 11/21/2023

### REPORT TO PARKS & RECREATION COMMISSION

#### SUBJECT

Parks & Recreation Commission Work Plan Goals for FY2023/24

#### COUNCIL PILLAR

Enhance Community Engagement and Transparency

Enhance Community Sports, Recreational and Arts Assets

Deliver and Enhance High-Quality Efficient Services and Infrastructure

#### BACKGROUND

Annually, the Parks & Recreation Commission (Commission) considers three to five specific, measurable, attainable, realistic, and time-bound Work Plan goals and/or activities for the year. These are intended to focus Commission efforts and respond to community and City Council priorities within existing budget direction, resource limitations, and the purview of the Commission as set forth in the City Charter and City Code.

At the October 17, 2023 Parks & Recreation Commission meeting, the Commission adopted the following Work Plan Goals for FY2023/24:

- Goal A: 1) Review park site and facility condition assessments and recommend priorities given existing and anticipated service levels and available resources.
- Goal B: 1) Review and solicit community input on the existing City park rehabilitation projects based on the current Capital Improvement Program (CIP) Budget and schedule; and 2) Review residential developer proposed schematic designs for new neighborhood parks that serve new residential development.
- Goal C: 1) Host and develop recommendations for the annual Santa Clara Art & Wine Festival 2024; and 2) Participate in Citywide Special events.
- Goal D: 1) Partner with at least one other City commission to build on/expand at least one existing Parks & Recreation event by adding one extra element for patrons to interact with during the event.
- Goal E: 1) Participate in the Parks & Recreation Master Plan process.

#### DISCUSSION

The Commission discusses the Work Plan at the regular monthly Commission meeting and makes

subcommittee assignments as necessary. Subcommittees are comprised of less than a quorum of the Commission. Between meetings, Commissioners work on the activities. At the November meeting, the Commission will review a draft of the workplan format (Attachment 1) for consideration and each subcommittee will provide an update (Attachment 2) regarding their plans, efforts, and activities in support of the FY2023/24 Work Plan Goals.

### **ENVIRONMENTAL REVIEW**

The action being considered does not constitute a “project” within the meaning of the California Environmental Quality Act (“CEQA”) pursuant to CEQA Guidelines section 15378(b)(5) in that it is a governmental organizational or administrative activity that will not result in direct or indirect changes in the environment.

### **PUBLIC CONTACT**

Public contact was made by posting the Parks & Recreation Commission agenda on the City’s official -notice bulletin board outside City Hall Council Chambers. A complete agenda packet is available on the City’s website and in the City Clerk’s Office at least 72 hours prior to a Regular Meeting and 24 hours prior to a Special Meeting. A hard copy of any agenda report may be requested by contacting the City Clerk’s Office at (408) 615-2220, email [clerk@santaclaraca.gov](mailto:clerk@santaclaraca.gov) <<mailto:clerk@santaclaraca.gov>>.

### **RECOMMENDATION**

Report on activities and efforts in support of the Commission’s Work Plan Goals for FY 2023/24.

Reviewed by: Kimberly Castro, Recreation Manager

Approved by: Dale Seale, Acting Director of Parks & Recreation

Attachment:

1. Draft Workplan Format
2. 11-21-2023 Status



**City of  
Santa Clara**

# **Parks and Recreation Commission**

**Charter, Priorities and Work Plan  
FY 2023/24**

# CITY CHARTER

The City of Santa Clara charter includes the following sections that mandate the formation of a Parks and Recreation Commission and its role.

## **Sec. 1008 Parks and Recreation Commission.**

*There shall be a City Parks and Recreation Commission consisting of seven members to be appointed by the City Council from the qualified electors of the City, none of whom shall hold any paid office or employment in the City government.*

## **Sec. 1009 Parks and Recreation Commission – Powers and duties.**

*The Parks and Recreation Commission shall have power and be required to:*

*(a) Act in advisory capacity to the City Council in all matters pertaining to parks, recreation, playgrounds and entertainment;*

*(b) Consider the annual budget of the Parks and Recreation Department during the process of its preparation and make recommendations with respect thereto to the City Manager and the City Council; and*

*(c) Assist in the planning and supervision of a recreation program for the inhabitants of the City, promote and stimulate public interest therein and to that end, solicit to the fullest extent possible the cooperation of school authorities and other public and private agencies interested therein. (Amended by electors at an election held March 7, 2000, Charter Chapter 11 of the State Statutes of 2000)*

# VISION STATEMENT

Enrich the lives and enhance the health and wellbeing of our community by supporting a vibrant, active quality of life for all ages, abilities and interests through excellent parks and recreational facilities, community services, programs, and events.

# PRIORITIES

Based on the Commission charter, the above vision statement, values, and context from prior years, the Commission has defined its priorities and goals for fiscal year 2023-24. The priorities are presented in this section and the goals emanating from these priorities are stated in the following section.

1. Assess facility and program conditions and recommend prioritized maintenance and improvements to facilities and programming. Include in the master plan as appropriate.
2. Identify gaps in infrastructure and programs by neighborhood. Include recommendations for updates to the master plan.
3. Identify opportunities for increasing community participation and current impediments. Recommend ways to enhance community participation and experience.
4. Review 2023 Art and Wine Festival, feedback received and lessons learned and plan for 2024 Art and Wine Festival.

# GOALS

<b>Goal A: Review park site and facility condition assessments and recommend priorities given existing and anticipated service levels and available resources</b>				
<b>Objective</b>	<b>Ad Hoc Subcommittee</b>	<b>Timeline &amp; Details</b>	<b>Notes</b>	<b>Measurable Objective</b>
Review OLD Feasibility Report 2018		Completed	Based on the 2018 report and current level the park projects and priority list for future projects seem reasonable	
Review New Feasibility Report (TBD)		TBD		
Visit at least three parks and swimming pools and note facility condition and make recommendations for improvements	All Commissioners		Divide up parks and swimming pools to visit by interest	# of parks visited by commissioners Documentation of improvements suggested alongside action taken by city staff
<b>Goal B: 1) Review and solicit community input on the existing City park rehabilitation projects based on the current Capital Improvement Program (CIP) Budget and schedule; and 2) review residential developer proposed schematic designs for new neighborhood parks that serve new residential development;</b>				
<b>Objective</b>	<b>Ad Hoc Subcommittee</b>	<b>Timeline &amp; Details</b>	<b>Notes</b>	<b>Measurable Objective</b>
Improve Park Project Webpage to highlight community outreach	Hai and Chu		Website structure currently under review by City	New website! QR codes to facilitate access
Use data to improve metrics for park use and outreach. Work with city staff to solicit input from the community and identify and recommend improvements to improve overall metrics of all parks.			Relies on city staff to: <ul style="list-style-type: none"> <li>collect park usage data and share with the Commission</li> <li>organize community outreach and conduct survey</li> </ul>	# of presentations on park data
Receive presentations organized by city staff and review residential developer proposed schematic designs for	All Commissioners			# of presentations give to commission, # of surveys completed

new neighborhood parks that serve new residential development				
Act as ambassadors for new parks and engage community to give feedback	All Commissioners			
<b>Goal C: 1) Host and develop recommendations for the annual Santa Clara Art &amp; Wine Festival 2023; and 2) participate in Citywide Special events</b>				
<b>Objective</b>	<b>Ad Hoc Subcommittee</b>	<b>Timeline &amp; Details</b>	<b>Notes</b>	<b>Measurable Objective</b>
Participate in Art and Wine Festival planning and supervise hosting of Art and Wine Festival			Hear Updates, Give Opinions, Meet with Staff, Work at Event	# of hours commissioners contribute to event
Participate in Citywide Special events;	All Commissioners		Concerts, Movies in the Park, City Council Meetings, Park Openings, Special Events	# of events visited by each commissioner
<b>Goal D: 1) Partner with at least one other City commission to build on/expand at least one existing Parks &amp; Recreation event by adding one extra element for patrons to interact with during the event.</b>				
<b>Objective</b>	<b>Ad Hoc Subcommittee</b>	<b>Timeline &amp; Details</b>	<b>Notes</b>	<b>Measurable Objective</b>
Plan event with Cultural and Youth Commissions for Korean Community	Ricketts and Forte	August 2024		# of events held
<b>Goal E: Participate in the Master Plan Process</b>				
<b>Objective</b>	<b>Ad Hoc Subcommittee</b>	<b>Timeline &amp; Details</b>	<b>Notes</b>	<b>Measurable Objective</b>
Receive updates from Staff				
Develop Subcommittees as needed				

# APPENDIX A – DISCUSSION ON CHARTER

Here are some key takeaways for discussion of the city charter establishing the Parks and Recreation Commission:

The Parks and Recreation Commission:

- Are ADVISORS to the City Council
  - Commission through formal action and resolutions at commission meetings prepares advice for Council that is presented to the Council
- Advises on ALL MATTERS pertaining to parks, recreation, playgrounds and entertainment
  - Parks include public swimming pools, tennis courts, ballfields, skatepark, community rooms, dog parks, etc. and other physical and recreational activity equipment and resources located on city park land.
  - Recreation activities includes those organized and managed by the department and those conducted in partnership with private entities on city property
- Makes RECOMMENDATIONS on Parks and Recreation Department BUDGET to City Manager and Council
  - City fiscal year is July thru June
  - Parks and Recreation department budget for following fiscal year is built with the following timeline (placeholder for now, and to be matched up with the established department process):
    - Month AAA: Fiscal year priorities identified, shared, discussed and finalized with Commission
    - Month BBB: Inputs received from within department
    - Month CCC: First draft budget shared with Commission
    - Month DDD: Commission recommendations discussed and finalized
    - Month EEE: Commission recommendations incorporated and draft reviewed with City Manager and council
    - Month FFF: Finalized budget shared and variations from Commission recommendations reviewed and discussed with Commission
- assists in PLANNING and SUPERVISION of a recreation program
  - Program example: Art & Wine Festival
  - Solicit cooperation of school authorities and other public and private agencies.



# APPENDIX B – POTENTIAL PARTNERS AND SPONSORS

This is a partial listing of organizations operating within the City of Santa Clara in 2023 and is included here as an example of organizations that the Parks and Recreation Commission may choose to promote with, partner with to stimulate public interest, and solicit cooperation for the recreation program it is responsible for planning and supervising.

- School authorities:
  - Santa Clara Unified School District
  - Cupertino Unified School District
  - Fremont Union High School District
  - Santa Clara University
  - Mission College
- Public agencies
  - Silicon Valley Power
  - Santa Clara Valley Water District
  - SCFD
  - SCPD
  - BART
  - VTA
- Private agencies
  - Corporations with HQ in City of Santa Clara
    - Nvidia
    - Intel
    - ServiceNow
    - AMD
    - VERITAS Technologies
  - Other large corporations
    - Kaiser Permanente
    - Oracle
    - 49ers
    - BMW
    - Nissan
    - Porsche
    - Mini
    - Kylii
    - PatelCo
    - CEFCU
    - Meriwest Credit Union
    - TechCU
    - Safeway
  - Lucky / Albertsons
  - Bank of America
  - Wells Fargo
  - US Bank
- Small and medium businesses
  - Restaurants, etc. such as Taplands, Slice of New York, etc.
  - Santa Clara Weekly
- Non-profits
  - Silicon Valley Central Chamber of Commerce
  - Santa Clara Swim Club
  - Santa Clara Dive Club
  - Santa Clara Artistic Swimming