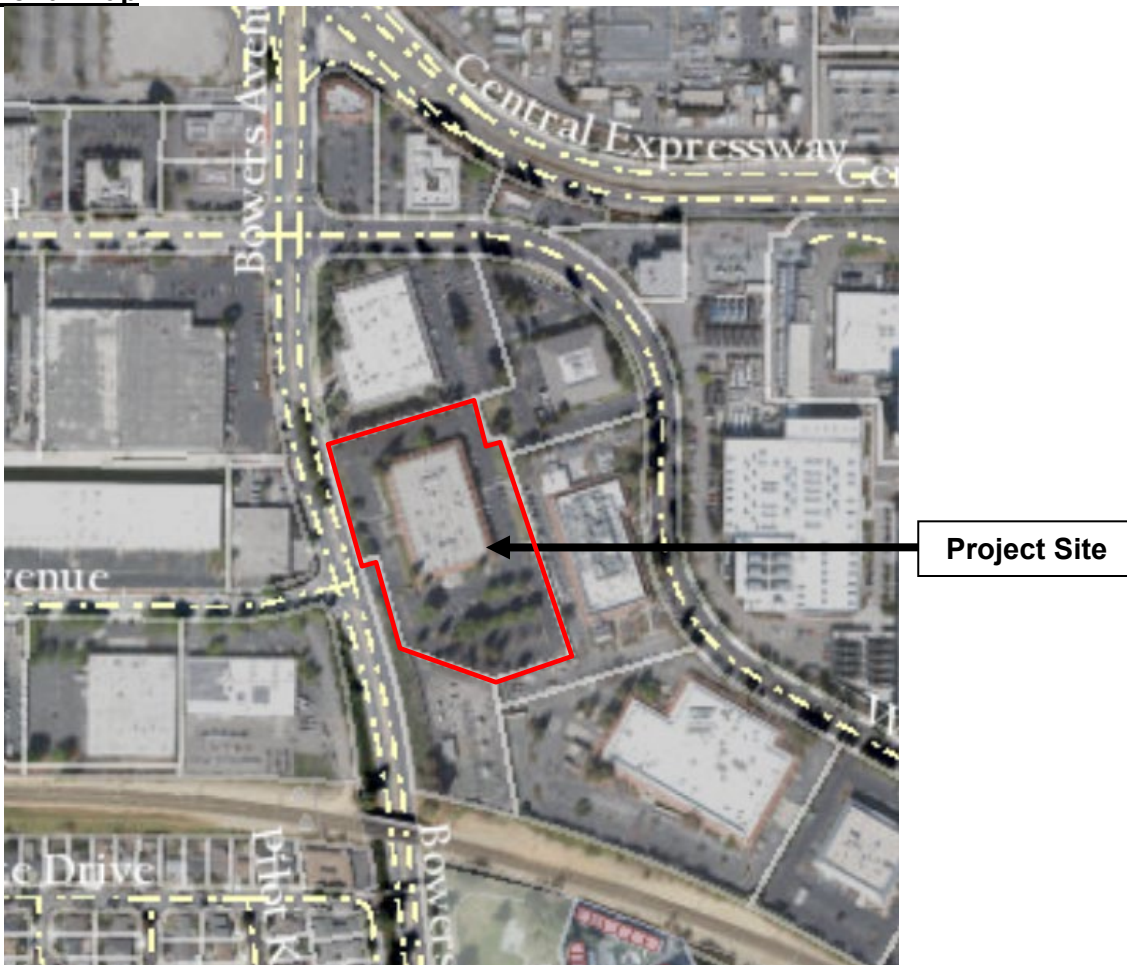


Project Data

File: PLN21-15069
Location: 2805 Bowers Avenue
Applicant/ Owner: Gerry De Young, HMH Engineers/ GI Partners
CEQA Determination: Environmental Impact Report (California Energy Commission- Lead Agency)

	Existing	Proposed
General Plan Designation	High Intensity Office/ R&D	Light Industrial
Zoning District	Light Industrial (ML)	Light Industrial (ML)
Lot Size	5.12 acres	5.20 acres
Land Use	Office	Data Center
Gross Floor Area	104,000 sq. ft.	2,170 sq. ft.
Residential Units	0	0
Private Open Space	N/A	N/A
Stories / Total Height	Two-story	Four stories at 87'6"
Parking	Surface parking lot	62 Surface Parking
Flood Zone	X	X

Aerial Map





General Plan Designation-
High Intensity Office/ R&D



Zoning Map – Light Industrial (ML)