

ORDINANCE NO. 2051

**AN ORDINANCE OF THE CITY OF SANTA CLARA,
CALIFORNIA, APPROVING THE SCHEMATIC
DESIGN FOR CENTRAL PARK ENTRANCE,
ACCESSIBILITY & PARKING IMPROVEMENTS IN
ACCORDANCE WITH CITY CHARTER SECTION 714.1**

BE IT ORDAINED BY THE CITY OF SANTA CLARA AS FOLLOWS:

WHEREAS, Central Park (“Park”), located at 909 Keily Blvd. was dedicated as 11.85 acres of parkland (APN 290-26-029) on November 19, 1961(VERIFY DATE);

WHEREAS, the Park was prioritized for rehabilitation and funding for the Central Park Entrance, Accessibility and Parking Improvements Project #3133 (“Project”) was approved by Council in the City’s Biennial Capital Improvement Program (CIP);

WHEREAS, implementation of the Central Park Entrance, Accessibility and Parking Improvements Project will include renovation, expansion, relocation, new construction, and preservation of existing park amenities;

WHEREAS, the voters of the City of Santa Clara passed Measure R in 2016, which added section 714.1 to the City Charter, which prohibits substantial building, construction, reconstruction, or development of parks and recreation facilities except pursuant to ordinance subject to referendum;

WHEREAS, the Project improvements constitutes as substantial building, construction, reconstruction and/or development, and is subject to Measure R; and,

WHEREAS, the City Council desires to approve the Park Project improvements by ordinance in accordance with City Charter section 714.1.

//

//

NOW THEREFORE, BE IT FURTHER ORDAINED BY THE CITY OF SANTA CLARA AS FOLLOWS:

SECTION 1: That the City Council hereby approves the building, construction, reconstruction and/or development in accordance with the Central Park Entrance, Accessibility, and Parking Improvements Schematic Design, attached hereto and incorporated by this reference, and in accordance with City Charter section 714.1.


SECTION 2: Savings clause. The changes provided for in this ordinance shall not affect any offense or act committed or done or any penalty or forfeiture incurred or any right established or accruing before the effective date of this ordinance; nor shall it affect any prosecution, suit or proceeding pending or any judgment rendered prior to the effective date of this ordinance. All fee schedules shall remain in force until superseded by the fee schedules adopted by the City Council.

//
//
//
//
//
//
//
//
//
//
//
//
//
//
//
//
//
//
//

SECTION 3: This Ordinance shall not be codified in the Santa Clara City Code.

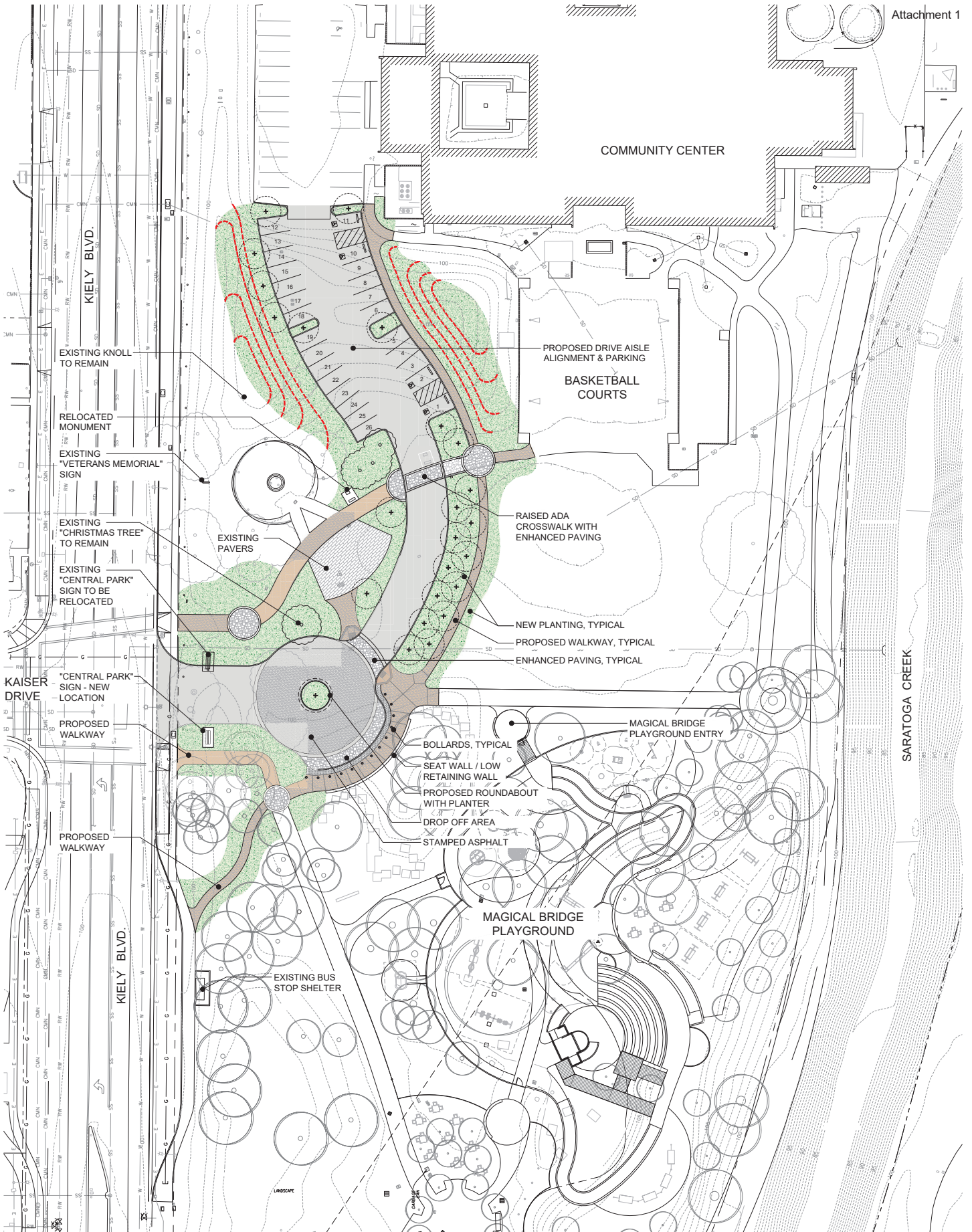
SECTION 4: Effective date. This ordinance shall take effect thirty (30) days after its final adoption; however, prior to its final adoption it shall be published in accordance with the requirements of Section 808 and 812 of “The Charter of the City of Santa Clara, California.” PASSED FOR THE PURPOSE OF PUBLICATION this 27th day of September, 2022, by the following vote:

AYES:	COUNCILORS:	Becker, Chahal, Hardy, Jain, Park, Watanabe and Mayor Gillmor
NOES:	COUNCILORS:	None
ABSENT:	COUNCILORS:	None
ABSTAINED:	COUNCILORS:	None

ATTEST: 
NORA PIMENTEL, MMC
ASSISTANT CITY CLERK
CITY OF SANTA CLARA

Attachments incorporated by reference:

1. Central Park Entrance, Accessibility and Parking Improvements Project Schematic Design



INITIAL SCHEMATIC PLAN - ENTRANCE, PARKING, ACCESS IMPROVEMENT

Santa Clara Central Park

Santa Clara, CA

City of Santa Clara

NUVIS

LANDSCAPE ARCHITECTURE

714-734-7311

21-037.01 3-30-2022



SCALE: 1"=20'-0"
0' 10' 20' 40'

SHEET 1 OF 1