



# City of Santa Clara

## Meeting Agenda

### Parks & Recreation Commission

Tuesday, January 21, 2020

7:00 PM

Cafeteria - City Hall East Wing  
1500 Warburton Avenue  
Santa Clara, CA 95050

---

#### CALL TO ORDER AND ROLL CALL

#### CONSENT CALENDAR

- 1.A    20-1400    [Action on the Parks & Recreation Commission Minutes of the November 19, 2019 Meeting](#)

**Recommendation:** Approve the Parks & Recreation Commission Minutes of the November 19, 2019 Meeting.

#### PUBLIC PRESENTATIONS

#### GENERAL BUSINESS

2.        20-1391    [Presentation by the Magical Bridge Foundation](#)
3.        20-1060    [Consideration of the Schematic Design for a New Public Park and Park Plaza proposed to be located at 5123 Calle Del Sol \(Ensemble Residential Project\)](#)

**Recommendation:** Recommend that City Council approve the proposed Schematic Design for the New Public Park and Park Plaza located at 5123 Calle Del Sol (Ensemble Residential Project).

4.        20-97        [Action on Recommendation for Disbursement of Proceeds from the 2019 Santa Clara Art & Wine Festival](#)

**Recommendation:** Recommend that Council approve grant disbursements in the amount of \$60,000 to local programs and services.

5.        20-94        [Develop a Comprehensive List of Potential Names for Public Parks](#)

**Recommendation:** Develop a draft list and receive public input.

#### STAFF REPORT

**COMMISSIONERS REPORT**

**ADJOURNMENT**

*The next scheduled meeting is on Tuesday, February 18, 2020 at the Cafeteria, City Hall East Wing.*



# City of Santa Clara

1500 Warburton Avenue  
Santa Clara, CA 95050  
[santaclaraca.gov](http://santaclaraca.gov)  
[@SantaClaraCity](https://twitter.com/SantaClaraCity)

## Agenda Report

---

20-1400

Agenda Date: 1/21/2020

---

### REPORT TO PARKS & RECREATION COMMISSION

#### **SUBJECT**

Action on the Parks & Recreation Commission Minutes of the November 19, 2019 Meeting

#### **RECOMMENDATION**

Approve the Parks & Recreation Commission Minutes of the November 19, 2019 Meeting.

Prepared by: Dale Seale, Deputy Director of Parks & Recreation

Approved by: James Teixeira, Director of Parks & Recreation

#### **ATTACHMENTS**

1. Draft Minutes - Parks & Recreation Commission Meeting November 19, 2019



# City of Santa Clara

## Meeting Minutes

### Parks & Recreation Commission

---

11/19/2019

7:00 PM

Cafeteria - City Hall East Wing  
1500 Warburton Avenue  
Santa Clara, CA 95050

---

#### **CALL TO ORDER AND ROLL CALL**

**Chair Knaack** called the meeting to order at 7:02 PM.

**Present** 6 - Chair Andrew Knaack, Vice Chair Joe Martinez, Commissioner George Guerra, Commissioner Kevan Michael Walke, Commissioner Roseann Alderete LaCoursiere, and Commissioner Eversley Forte

**Absent** 1 - Commissioner Burt Field

#### **CONSENT CALENDAR**

1.A [19-1247](#) Action on the Parks & Recreation Commission Minutes of the October 15, 2019 Meeting

**Recommendation:** Approve the Parks & Recreation Commission Minutes of the October 15, 2019 Meeting.

**Commissioner Guerra made a motion, seconded by Commissioner Walke to recommend approval of minutes.**

**Aye:** 6 - Chair Knaack, Vice Chair Martinez, Commissioner Guerra, Commissioner Walke, Commissioner Alderete LaCoursiere, and Commissioner Forte

**Absent:** 1 - Commissioner Field

#### **PUBLIC PRESENTATIONS**

Susan Hinton, a member of the public, appreciated the detailed work and outreach done by staff in the Central Park Master Plan. She commented on the potential installation of synthetic turf on Fatjo Field in the Central Park Master Plan, and expressed her view that it would be best if Fatjo Field would remain as an improved natural grass field in the future without any of the disadvantages of synthetic turf.

#### **GENERAL BUSINESS**



2. [19-1353](#) Presentation and Action on Central Park Master Plan Update and Draft Ordinance in accord with City Charter section 714.1

**Recommendation:** Recommend that Council approve the Central Park Master Plan including the Schematic Design Update and project phasing and Introduce an Ordinance in accordance with City Charter section 714.1.

**Commissioner Field** entered the meeting at 7:05 PM.

**Commissioner Walke made a motion, seconded by Commissioner LaCoursiere to recommend that Council approve the Central Park Master Plan including the Schematic Design Update and project phasing and introduce an ordinance in accordance with City Charter section 714.1.**

**Aye:** 7 - Chair Knaack, Vice Chair Martinez, Commissioner Guerra, Commissioner Field , Commissioner Walke, Commissioner Alderete LaCoursiere, and Commissioner Forte

3. [19-1244](#) Recommendation to the Governance and Ethics Committee to Name the New Neighborhood Park located at 1205 Coleman Avenue (Gateway Crossings)

**Recommendation:** Recommend a Name for the Governance and Ethics Committee consideration for the New Neighborhood Park located at 1205 Coleman Avenue.

**Commissioner Guerra made a motion, seconded by Commissioner Martinez that Item 3. be tabled until one month after a comprehensive list of potential park names is provided to the Commission.**

**Aye:** 7 - Chair Knaack, Vice Chair Martinez, Commissioner Guerra, Commissioner Field , Commissioner Walke, Commissioner Alderete LaCoursiere, and Commissioner Forte

4. [19-1245](#) Recommendation to the Governance and Ethics Committee to Name the New Public Park located at 2343 Calle Del Mundo.

**Recommendation:** Recommend a Name for the Governance and Ethics Committee consideration for the New Public Park located at 2343 Calle Del Mundo (SummerHill Residential Project).

**Commissioner Guerra made a motion, seconded by Commissioner Martinez that Item 4. be tabled until one month after a comprehensive list of potential park names is provided to the Commission.**

**Commissioner Guerra made a motion, seconded by Commissioner Walke that each Commissioner provide staff a list of three to four names by January 21, 2020, Parks & Recreation Commission Meeting.**

**Aye:** 7 - Chair Knaack, Vice Chair Martinez, Commissioner Guerra, Commissioner Field , Commissioner Walke, Commissioner Alderete LaCoursiere, and Commissioner Forte

5. [19-1246](#) Parks & Recreation Commission Work Plan Goals for FY 2019/20

The subcommittee visited the 30+ acre park site located in the north of the City on October 28, 2019. They reported back to the Commission about their initial thoughts about major recreational activities that would benefit the community considering the size of the site, sloped areas and the higher elevation upland area of the site. The subcommittee will continue to develop a methodology and timeline to conduct robust outreach with an array of stakeholders in the early stages of collaboration before the City develops the 30+ acre park site. In addition, Deputy Director Seale will provide reference literature regarding the recent conversion of golf courses to park land.

**STAFF REPORT**

**Deputy Director Seale** reported to the Commission regarding the ribbon cutting for the newly rehabilitated playground at Bowers Park. The Mayor and City Manager led the community in opening the new playground. Hundred of park patrons attended the event. The new Bowers Park playground was designated as a National Demonstration site in three distinct categories by Playcore: the 7 Principles of Inclusive Design, Nature Grounds, and Play On. The other park projects are progressing, including Reed & Grant Streets Sports Park, Machado Park, Homeridge Park, Agnew Park, and Fuller Park. The Machado Park Playground Rehabilitation Project will continue, as there was a delay due to a design change to enhance the play value of the hillside slide.

The Tree Lighting Ceremony will be on December 6, 2019. Commissioners are requested to be present at base camp for the Tree Lighting Ceremony at 4:00 PM. The ice rink will open to the public on November 21, 2019.

**COMMISSIONERS REPORT**

**Commissioner Field:** Visited the Palo Alto Magical Bridge Playground. He commented on the large and diverse crowd enjoying the playground on a weekday. He looks forward to the construction of a new Magical Bridge All-Inclusive Playground in Santa Clara. Commissioner Field also visited the Reed & Grant Streets Sports Park site.

**Commissioner Forte:** Attended the Bowers Park Playground Ribbon Cutting event.

**Commissioner Guerra:** Visited Maywood Park and Mary Gomez Park.

**Chair Knaack:** Attended the Bowers Park Playground Ribbon Cutting event and was pleased with the transformation of the playground and park. He will be attending the Charlotte's Web play in late November. He also visited the 30+ acre park site with the other subcommittee members.

**Commissioner LaCoursiere:** Attended October Fest at Westwood School which was very successful. She also attended the Hoop Shoot sponsored by the Elks at the Youth Activity Center. Commissioner LaCoursiere was very pleased to work with Recreation Supervisor Gayle Icho, and staff. Visited the 30+ acre park site with the other subcommittee members.

**Commissioner Martinez:** Visited the 30+ acre park site with the other subcommittee members.

**Commissioner Walke:** Visited Central Park, and attended the PAL Soccer Tournament which had over 2,000 participants. He also visited the Reed & Grant Streets Sports Park site, and Montague Park.

**ADJOURNMENT**

**Commissioner Guerra made a motion, seconded by Commissioner Martinez to cancel the December 17, 2019 Parks & Recreation Commission Meeting, and adjourn the meeting until the regularly scheduled meeting at 7:00 PM on January 21, 2020.**

**Aye:** 7 - Chair Knaack, Vice Chair Martinez, Commissioner Guerra, Commissioner Field, Commissioner Walke, Commissioner Alderete LaCoursiere, and Commissioner Forte



## Agenda Report

20-1391

Agenda Date: 1/21/2020

### REPORT TO PARK & RECREATION COMMISSION

#### **SUBJECT**

Presentation by the Magical Bridge Foundation

#### **BACKGROUND**

The City entered into an agreement with the Magical Bridge Foundation to design, build and partially fund a Magical Bridge All Inclusive Playground in Central Park (Project). This new playground will replace the 1960's era Arbor Center Playground on the Kiely Boulevard side of the park. The playground project will be funded through City funding in the amount of \$1.8 million dollars, an All Inclusive Playground Grant from the County of Santa Clara in the amount of \$1.7 million dollars and additional funding of at least \$1 million dollars raised by the Magical Bridge Foundation through individual, community and corporate support.

Over the last several years the City Council has adopted a goal to "enhance parks and recreation assets" and supported new park and playground standards that embrace inclusion and age-friendly design. The recently rehabilitated Bowers Park Playground implemented these design standards.

The design standards promote community health and wellness and are appropriate for all persons and all abilities of users. The Magical Bridge Playground in Central Park will be approximately one acre in size, provide distinct zones of play with each play element, offered in multiple ways. It will address the developmental needs of children and the physical, cognitive and social needs of all playground guests, and foster positive connections with others.

Magical Bridge Foundation will engage the whole community to increase awareness for the benefits of the All-Inclusive Playground and to solicit needed financial support for the completion of the Project and necessary park improvements that will support community access and use of the play space.

#### **DISCUSSION**

Representatives from the Magical Bridge Foundation will provide a brief Project overview and opportunities for the community to be involved in the fundraising effort and playground design.

#### **ENVIRONMENTAL REVIEW**

The action being considered does not constitute a "project" within the meaning of the California Environmental Quality Act ("CEQA") pursuant to CEQA Guidelines section 15378(b)(5) in that it is a governmental organizational or administrative activity that will not result in direct or indirect changes in the environment.

#### **FISCAL IMPACT**

Funding for this Project in the amount of \$1.8 million dollars has been allocated by the City of Santa Clara, and a matching grant (All-Inclusive Playground Grant) awarded by the County of Santa Clara

in the amount of \$1.7 million dollars. Additional funding of at least \$1 million dollars is needed to be raised by the Magical Bridge Foundation through individual, community and corporate support to complete the Project and other necessary park improvements that will support community access and use of the play space.

**PUBLIC CONTACT**

Public contact was made by posting the Commission agenda on the City's official-notice bulletin board outside City Hall Council Chambers. A complete agenda packet is available on the City's website and in the City Clerk's Office at least 72 hours prior to a Regular Meeting and 24 hours prior to a Special Meeting. A hard copy of any agenda report may be requested by contacting the City Clerk's Office at (408) 615-2220, email [clerk@santaclaraca.gov](mailto:clerk@santaclaraca.gov) <<mailto:clerk@santaclaraca.gov>> or at the public information desk at any City of Santa Clara public library.

**RECOMMENDATION**

None.

Reviewed by: Kimberly Castro, Recreation Manager

Approved by: James Teixeira, Director of Parks & Recreation

**ATTACHMENTS**- None.



## Agenda Report

20-1060

Agenda Date: 1/21/2020

### REPORT TO PARKS & RECREATION COMMISSION

#### **SUBJECT**

Consideration of the Schematic Design for a New Public Park and Park Plaza proposed to be located at 5123 Calle Del Sol (Ensemble Residential Project)

#### **BACKGROUND**

On November 13, 2018, the Santa Clara City Council adopted the Tasman East Specific Plan (TESP). The TESP area is an existing 45-acre industrial neighborhood bounded by Tasman Drive to the south, the Guadalupe River to the East, the closed Santa Clara Golf and Tennis Club to the north, and Lafayette Street to the west. The TESP creates the framework for the development of a high-density transit-oriented residential neighborhood along with supportive retail services. The TESP provides allowed uses, densities, height limits, design criteria, connections to the existing Guadalupe River trail, locations for parkland (Attachment 1), and strategies for better access to transit.

On July 17, 2019, the City Architectural Committee approved the Ensemble Residential Project located at 5123 Calle Del Sol to construct 311 apartment units on Parcel 19 and 192 apartment units on Parcel 29. The developer has proposed to meet its parkland dedication requirements (SCCC17.35) and the TESP through a 4,466sf (0.1025 acres) public park dedicated to the City in fee title, and a 950sf public park plaza dedicated to the City as an easement. Public park improvements will be constructed by the developer to the City's design criteria and specifications and will be maintained by the developer in perpetuity after dedication.

#### **DISCUSSION**

The public park schematic design (Attachment 2) is 4,466sf (0.1025 acres) in size and includes concrete game tables, ping pong tables, concrete corn hole games, lawn area, interactive play/Memo Activity Zone, seating, pathways, trees, and landscaping. As part of initial park design development, the features proposed by the developer have been reviewed by the Parks & Recreation Department and are found to be appropriate for the space.

The schematic design for the public park plaza (Attachment 3) is 950sf (0.0218 acres) and features a performance stage, seating, landscaping, and lighting.

The Commission will review the parks and open space guidelines from the TESP, the schematic design for the public park and public park plaza, provide feedback, and make a recommendation to the City Council.

#### **ENVIRONMENTAL REVIEW**

The CEQA determination for this project will be a statutory exemption pursuant to Government Code Section 65457. The activity covered by this residential development project is consistent with the TESP FEIR that the City certified on November 13, 2018 (after January 1, 1980).

**FISCAL IMPACT**

There is no fiscal impact to the General Fund for the current action. The developer will construct the public park improvements and maintain the park in perpetuity, all to City standards and at no cost to the City.

**COORDINATION**

This report has been coordinated with the City Attorney's Office.

**PUBLIC CONTACT**

Public contact was made by posting the Parks & Recreation Commission agenda on the City's official-notice bulletin board outside City Hall Council Chambers. A complete agenda packet is available on the City's website and in the City Clerk's Office at least 72 hours prior to a Regular Meeting and 24 hours prior to a Special Meeting. A hard copy of any agenda report may be requested by contacting the City Clerk's Office at (408) 615-2220, e-mail [clerk@santaclaraca.gov](mailto:clerk@santaclaraca.gov) [<mailto:clerk@santaclaraca.gov>](mailto:clerk@santaclaraca.gov) or at the public information desk at any City of Santa Clara public library.

**RECOMMENDATION**

Recommend that City Council approve the proposed Schematic Design for the New Public Park and Park Plaza located at 5123 Calle Del Sol (Ensemble Residential Project).

Reviewed by: Dale Seale, Deputy Director of Parks & Recreation

Approved by: James Teixeira, Director of Parks & Recreation

**ATTACHMENTS**

1. Tasman East Specific Plan Excerpts
2. Mini Park Schematic Design
3. Public Park Plaza Schematic Design



## Excerpts from Tasman East Specific Plan pertaining to Parks



Figure 03-5-3 Land Use Framework

\* Dedicated Open Space areas will be implemented through the City's Parkland Dedication Ordinance and the terms of the Specific Plan.

\* Greenway and Park locations depicted are conceptual.

## 03.7 OPEN SPACE FRAMEWORK

### DETERMINED NEED

For residential developments, Open Space requirements are regulated by Chapter 17.35 of the City's Municipal Code. Per City Council direction, the Tasman East Focus Area (TEFA) is required to provide at least 10 acres of open space made up of both dedicated park and privately-owned open spaces.

### DEDICATED PARKLAND

A minimum of 5 acres of dedicated parkland is required throughout the Tasman East Focus Area districts, see Figure 03-7-1 for location of districts.

Each district is required to provide dedicated parkland of a given acreage and adjacency. The exact dimensions and programming are flexible to allow for the design to evolve along with the needs of the community, see Figure 03-7-3.

The five dedicated parkland districts are: Hill District (0.85 acres), River District (2.5 acres), Station District (0.15-acre urban plaza), Bridge District (0.5 acre), and Center District (1 acre). For an overview of the character, connections, and programming for each district, see Chapter 5: Open Space Design Guidelines.

Dedicated parkland and greenways as required by the TEFA shall receive park land dedication credits for the Santa Clara Parks Ordinance 17.35 SCCC if consistent with the size and general location of parks identified in Figure 3.7.3 and Chapter 5 of the TEFA.

All development will be responsible for satisfying the parkland amount specified in Chapter 17.35 of SCCC by land dedication and/or in-lieu fees. Properties that do not

have parkland identified on their sites on Figure 3.7.3 of the TEFA shall make their contribution through in-lieu fees or can choose to propose parkland dedication that has not yet been identified. The City will retain discretion to provide Parks Ordinance credit for proposed parkland not identified in the TEFA. The "Parkland Dedication Ordinance and TEFA Additions" section of Chapter 5 specifies the criteria for private recreation credit.

### PRIVATELY-OWNED OPEN SPACE

Beyond the minimum 5 acres of dedicated parkland, the balance of the 10 acres of required open space may be achieved with any of the three following types of space: greenways, privately-owned publicly-accessible parks, and Privately-owned Open Space, see Figure 03-7-2.

### GREENWAYS

Greenways are privately owned publicly-accessible open space connectors that will link dedicated parkland and streets into a continuous green network throughout the site. Greenways will be car-free, providing safe and pleasant paths for people on foot, bikes and scooters. If landscaped appropriately, greenways will create open space opportunities for lingering and gathering as an addition to the dedicated parkland and privately-owned open spaces. They also provide an opportunity to improve the local environment by reducing air pollution, the heat-island effect, noise, and improving pedestrian safety.

Greenways will be created through minimum 15-foot easements on either side of property lines for a total minimum right-of-way width of 30 feet. The general alignment of greenways are shown in Figure 03-5-3 (equivalent to roughly 1 acre of open space). This alignment may be refined, but generally greenways should

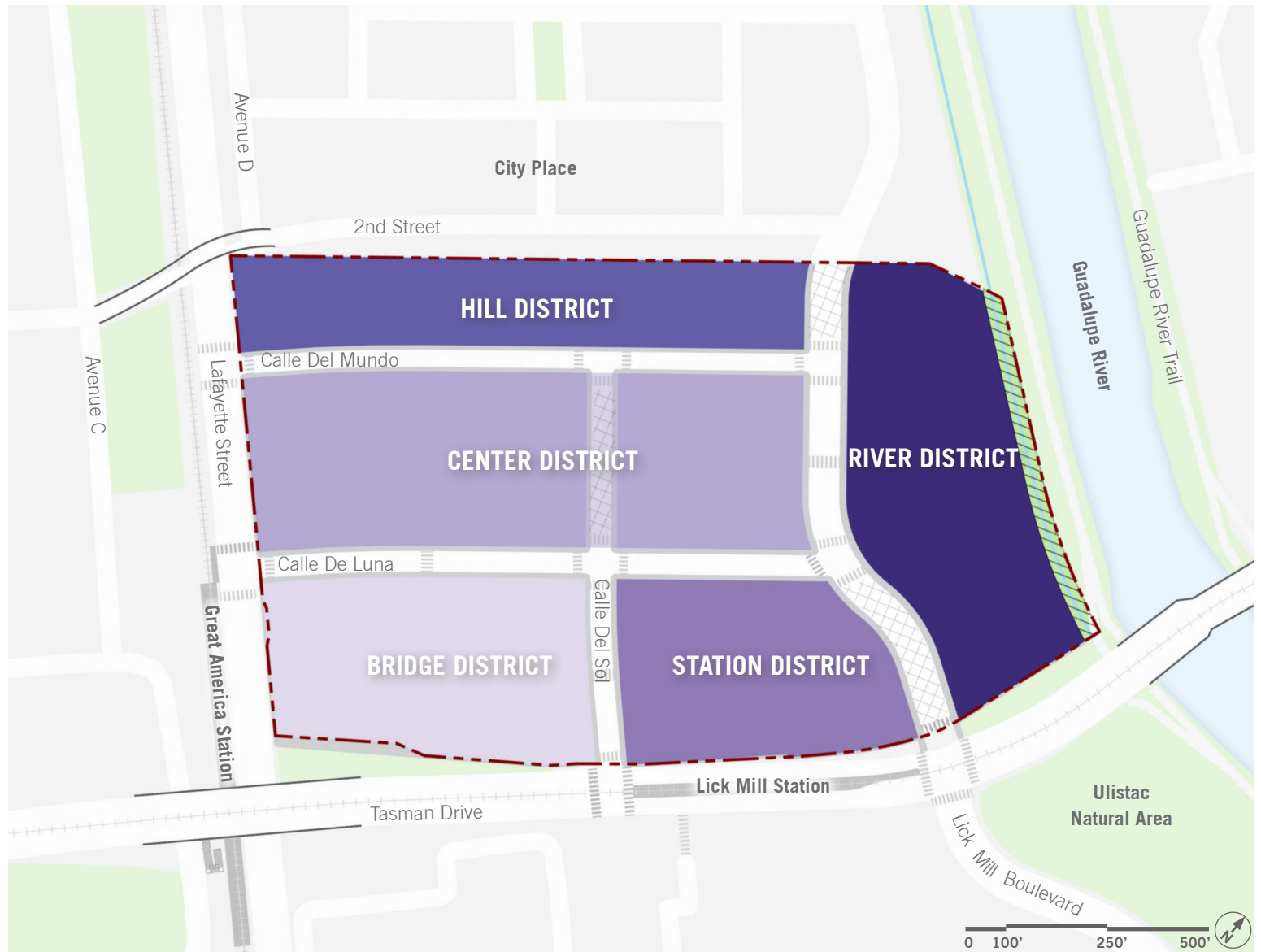
be toward the middle of a block and create meaningful connections between open spaces. The greenway network should align across streets so that they can be connected via mid-block crosswalks. Greenways are to be maintained at a standard equal to or higher than City parks.

Greenways count towards the total 10-acre open space requirement. Also see Section 05.6 for design guidelines.

### PRIVATELY-OWNED PUBLICLY ACCESSIBLE OPEN SPACE

In the case of privately-owned, publicly accessible open space, each portion of at-grade publicly-accessible land may count toward the TEFA open space requirement, as long as it meets the following criteria:

- To the maximum extent feasible, privately owned publicly-accessible land shall be contiguous with the fixed open space network;
- For parcels one acre or greater in size, the minimum area of a single open space is 2,000 square feet with a minimum dimension of 40 feet. For parcels less than an acre in area, the minimum size for open space is 5% of the net parcel size, after any other required dedications, with a minimum dimension of 30 feet;
- A minimum 25% of the perimeter of the open space must abut a sidewalk, greenway, open space or publicly-accessible pathway;
- The open space shall include signage that is located in a publicly conspicuous place stating that the open space is available for public use and the hours of use;
- Fences or other barriers that create the appearance of privatization of open space are discouraged. If fencing is used, it shall be designed to maximize visibility.



**Figure 03-7-1** Districts

- To ensure visibility and safety, all points along the perimeter of an open space must maintain an unobstructed line of sight to at least one street or greenway frontage;
- The open space shall be generally flat; sloped areas programmed with active uses can be considered for credit.

Privately-owned publicly accessible open space located on a podium must meet all of the above criteria as well as:

- Provide adequate soil volume to support planting; and
- Ensure privacy for podium level units; and.
- Clear and visible signage indicating that the space is open for public use.

#### PRIVATE OPEN SPACE

In the case of PRIVATE OPEN SPACE, up to 50 percent of the area of each open space is eligible for credit toward the TEFA open space requirement. In addition, balconies or stoops that are a minimum of 36 square feet in area

	ACRES
<b>Total Open Space Requirement</b>	<b>10.0</b>
Dedicated Parkland	5.0
Greenways	1.1
Remaining Privately-Owned Open Space	3.9
<b>Need from Each Development (as a percent of 31.35 acres of developable area)</b>	<b>12.5% (or 3.9 acres)</b>

**Figure 03-7-2** Privately-Owned Open Space Requirement as a Percentage of Development Area.

and have a minimum dimension of 5 feet in any direction shall be allowed 25% of area credit toward the TEFA open space requirement.

#### Parkland Dedication Ordinance and TEFA Additions

Privately-Owned Publicly Accessible Open Space and PRIVATE OPEN SPACE as defined in the Specific Plan shall receive Park and Recreational Land PRIVATE OPEN SPACE credits when the combined area of over 0.75 acres meets 4 of the 8 required elements of the Park Ordinance defined in Municipal Code Section 17.35.070 plus two new as noted below.

The eight required elements of the Park Ordinance defined in Municipal Code Section 17.35.070 are listed below for reference:

- Turfed play field, comprised of a single unit of land which is generally level and free of physical barriers which would inhibit group play activities with a minimum contiguous area of one-half acre;
- Children's play apparatus area that conforms to the then current Federal Consumer Product Safety Commission guidelines;
- Landscaped and furnished, park-like quiet area;
- Recreational community gardens;
- Family picnic area;
- Game, fitness or sport court area;
- Accessible swimming pool (minimum size forty-two (42) feet by seventy-five (75) feet) with adjacent deck or lawn areas;
- Recreation center buildings and grounds;

Two additional recreational elements are noted in the Tasman East Focus Area Plan:

- Dog park with a minimum size of 3,000 square feet, and a minimum dimension of 30 feet; and

- Game area, a minimum of 2,000 square feet in area with a minimum dimension of 30 feet. This minimum area can be reduced to 1,000 square feet if next to another open space.

The City has the discretion to also allow Park Ordinance credit for costs associated with off-site improvements in areas which are functionally contiguous to dedicated parkland (or an easement with public access).

## DEDICATED PARKLAND (MINIMUM 5 ACRES)

- Hill District 0.85 acre
- Center District 1.0 acre
- River District 2.5 acres  
(Including 0.75 acre easement)
- Bridge District 0.5 acre
- Station District 0.15 acre

+

## PRIVATELY-OWNED OPEN SPACE

- Greenways
- At Grade & Publicly  
Accessible (100% Credit )
- PRIVATE OPEN SPACE  
(50% Credit )

=

**TOTAL 10 ACRES**

Public improvements beyond the site  
not included in 10.0 acres

\* Greenway and Park locations  
depicted are conceptual.

- Public Improvement Beyond  
the Site
- To Be Implemented as  
Development Occurs
- City Easement
- Site Boundary



Figure 03-7-3 Open Space Framework



## 03.8 URBAN DESIGN FRAMEWORK

The urban design framework builds on the land use, circulation and open space frameworks to create a sense of place for the Tasman East Focus Area. An identity for the neighborhood will take shape through the urban design devices of gateways, edges, connections, and landmark buildings. These elements are illustrated in Figure 03-8-1.

### GATEWAYS

The Focus Area will feature two gateway locations at the edge of the site that offer first impressions upon approach. Gateways mark important destinations, such as transit stations and points of connection within the site and to adjacent development. Gateways will feature high quality architecture, public realm enhancements (such as plazas and parks), or a combination of both.

The gateway locations include: 1) a connection to the Lick Mill Station at Calle Del Sol; and 2) a connection to the Great America Station at Calle de Luna and a potential third gateway connection to City Place at 2nd Street.

### EDGES

The site is surrounded on the north and east sides by challenging grade changes ranging from roughly 15 feet to 30 feet in height. Additionally, at the two southern corners of the site, Tasman Drive bridges over the rail tracks and the Guadalupe River (from west to east), causing steep slope differences on the site.

Periphery developments along the eastern edge of the site should gracefully mitigate grade changes to offer pedestrians continuous access to the Guadalupe River

Trail. The northern edge of the site should be designed to facilitate a pedestrian connection to 2nd Street, as this will be an important pedestrian route to City Place. Strategies for mitigating grade changes include fill and/or publicly accessible, activated vertical connections such as stairs, ramps or landscaped slopes.

Any action to mitigate the grade changes will happen beyond the site boundaries and will require landscape design and civil engineering coordination with adjacent property owners.

### CONNECTIONS

A complete and connected network of streets will provide a safe and enjoyable pedestrian experience that encourages walking and biking. A finer grained network of greenways will provide secondary, pedestrian and bicycle-only connections that link people easily to the parks in the neighborhood as well as regional open spaces, including the Guadalupe River Trail.

In order to truly connect this network, vertical connections are required to be made between specific parks in Tasman East to roads or trails outside of the plan boundary.

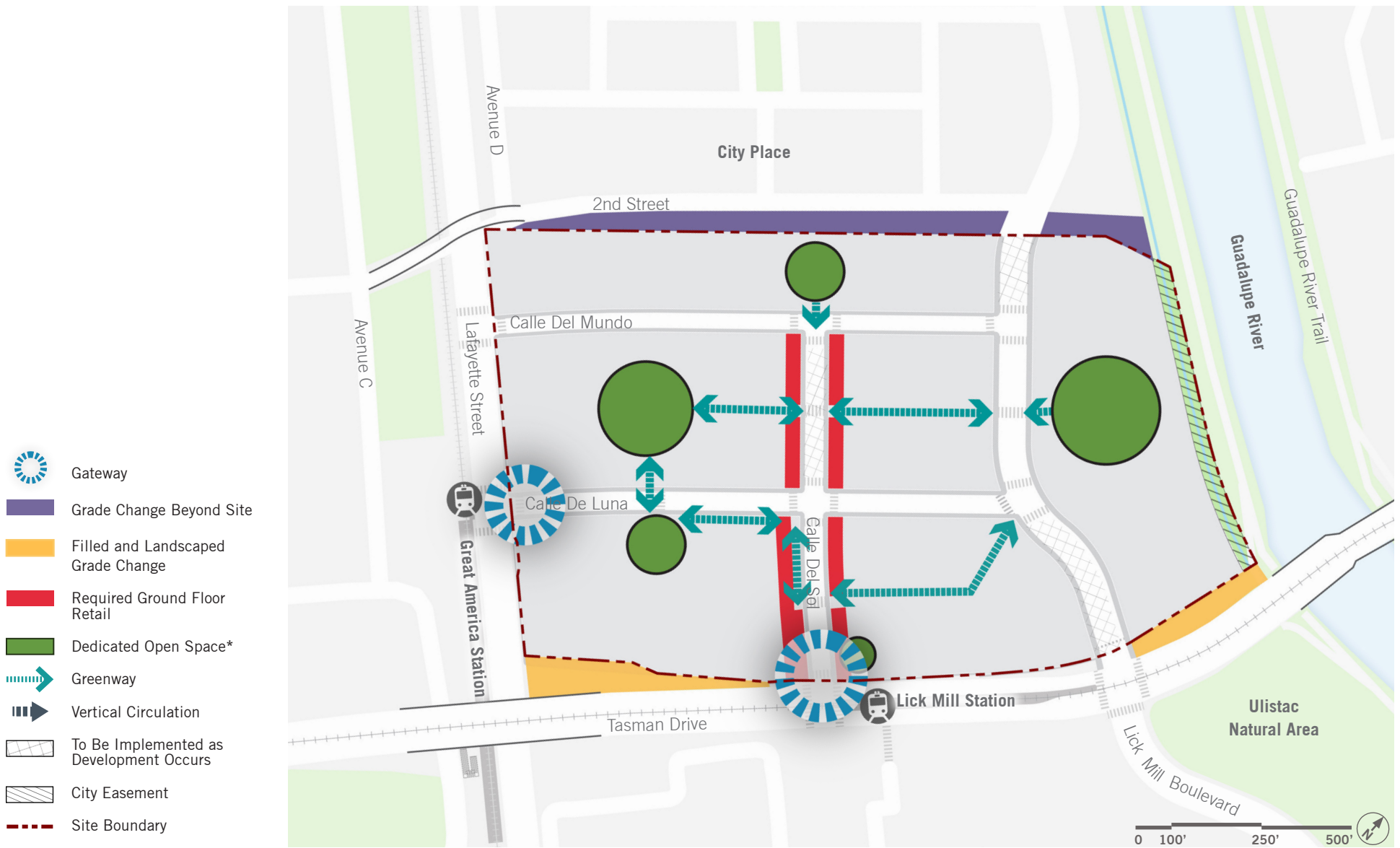
Ramps and stairs for pedestrian and bicycle connectivity are required at open spaces in the River District, located along grade changes. See Section 5.2 and 5.3 for Open Space Design Guidelines.

### LANDMARK BUILDINGS

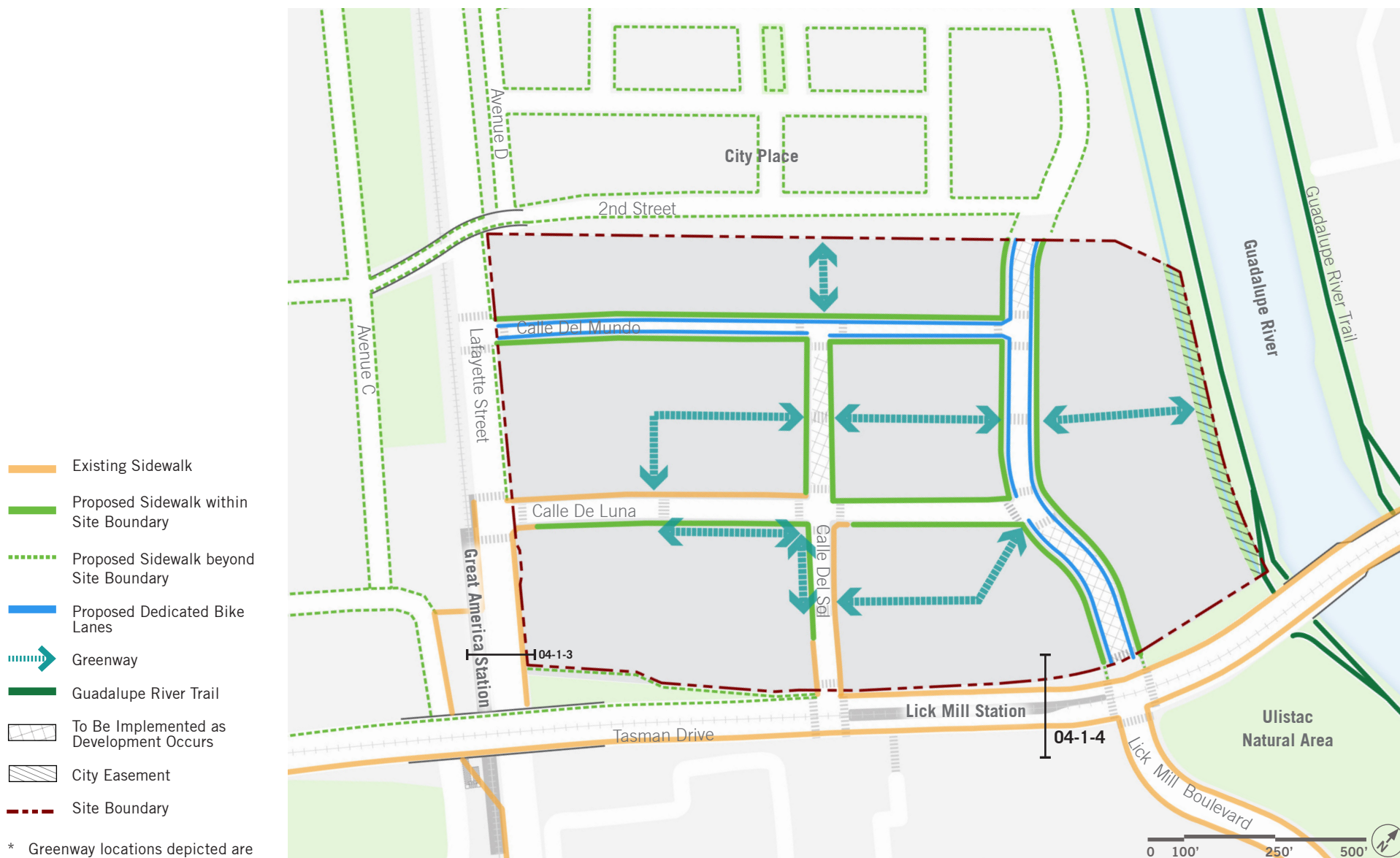
Towers should mark the location of key site features such as sites nearby the VTA and Amtrak/ACE stations and neighborhood parks. By locating towers near transit

stations and neighborhood parks, these places are identifiable from a distance and also give the towers a sense of prominence, proximity and space appropriate to their larger scale.

Towers should also be located to take advantage of the site's sweeping views. Santa Clara is characterized by flat lands with meandering rivers and creeks – allowing for distant views of the hills to the East and West, of the Bay to the north, and of landmark buildings such as Levi's Stadium, the towers of Downtown San Jose and views up and down the Guadalupe River.



**Figure 03-8-1** Urban Design Framework



\* Greenway locations depicted are conceptual.

**Figure 04-1-2** Pedestrian and Bike Network Connectivity



# 05

## OPEN SPACE DESIGN GUIDELINES

---

05.1	Dedicated Parkland Locations & Program	68
05.2	River District	70
05.3	Hill District	71
05.4	Bridge & Center Districts	72
05.5	Station District	73
05.6	Greenways	74

## 05.1 DEDICATED PARKLAND LOCATIONS & PROGRAM

### Intent

The Tasman East open space system will be a network of diverse neighborhood parks that offer a unique destination and enhance the overall site environment. Open Spaces will be connected by greenways and pedestrian priority streets that complement and connect with the larger North Santa Clara open space network, including the Guadalupe River Trail and the parks and paths provided at City Place.

### Standards

- (A) Open spaces shall be sized and located in districts according to Section 3.7 Open Space Framework. Parkland shall be dedicated and constructed in a proportional amount to a given project's district requirement prior to issuance of a certificate of occupancy, or temporary certificate of occupancy. Developer shall have the option of posting a bond or providing other security to the satisfaction of the Director of Community Development if the construction of the new open space is not completed prior to temporary certificate of occupancy.
- (B) Parks and open spaces shall be designed to connect with the network of greenways and streets that carry pedestrians through the neighborhood. See also Section 05.06 for guidance on greenway design.
- (C) Grey arrow on Figure 05-1-1 indicates location where open space is encouraged to be designed to create vertical connection that navigates grade changes between River District and the adjacent Guadalupe River Trail. The character of this

connection is further outlined in the following section 05.2.

- (D) Open spaces shall be generally flat; sloped areas programmed with active uses can be considered for credit.
- (E) Pioneer trails; Native plantings proposed for development in the Plan Area shall consider the SCVWD's Guidelines and Standards for Land Use Near Streams. Local native plantings, to the extent they are available, shall be used. Development and landscaping of the area along the levee should also consider opportunities such as site layout, fencing, landscaping, and education to discourage the public from creating pioneer trails up the levee slope to access the existing trail. A 15-foot zone free of tree plantings shall be provided from the levee toe to allow for emergency access.

### Guidelines

- (F) The open space network should provide a comprehensive array of passive and active recreational opportunities. Each open space should have a unique identity that reinforces a diversity of activities within the overall open space system.
- (G) Potential program elements which may be used to create a unique park identity may include, but are not limited to: dog park, exercise area, sport courts, games (i.e. bocce, etc), large natural area, playground, community garden or amphitheater.
- (H) Sports courts, where they occur, should be designed

to official sizes with required setbacks and safety fencing. Elements that require fencing should be sited in a way that does not negatively impact park connectivity or visibility.

- (I) In addition to a signature program element, all open spaces should accommodate passive uses such as reading, picnicking and gathering.
- (J) When siting park elements, consider types of activity, periods of use or vacancy, availability of sun or shade and the differing needs of a diverse range of visitors such as small children, adult athletes, skateboarders, dog owners, etc. Design program components to accommodate flexible uses.
- (K) Park program should relate to adjacent land use, interior building program and building siting. Considerations for sun/shade, indoor/outdoor, public/private should all be incorporated into the design of open space and siting of buildings.



\* Greenway and Park locations depicted are conceptual.

**Figure 05-1-1** Open Space Locations

## 05.2 RIVER DISTRICT

### Intent

The park in the River District will be the most expansive and natural neighborhood park in the Tasman East neighborhood.

### Standards

- (A) The park shall maintain public access along the riverfront and be designed to embrace the Guadalupe River as a central feature.
- (B) Sloped walks, terraces, stairs and/or ramps for bicycle and pedestrian circulation shall be a key feature to connect across the grade change between the eastern edge of the site and the Guadalupe River Trail. This will ensure that pedestrians and bicyclists from the Guadalupe River Trail can access the Great America Station at the western end of Calle De Luna.
- (C) The park may also provide a public outdoor amphitheater that can be used to host concerts, movies, and other public events.

### Guidelines

- (D) The River district park should be designed to complement the adjacent Guadalupe River and Ulistac Natural Area.
- (E) The park should have larger contiguous soil volumes to support long-lived canopy trees and diverse habitat.
- (F) Plant selections should reinforce the native and surrounding ecology and promote habitat development.
- (G) Ramps and stairs should be aesthetically pleasing as well as functional. In bridging the grade change, the elevated open space should open views back across the Tasman East neighborhood, up and down the river, and toward Levi's stadium. More distant views to Downtown San Jose and the Diablo Mountain Range should be considered.



*Terraces direct views and provide an informal gathering space*



*Passive trails along the riverfront*



*Slides are one way to use grade changes to provide signature play opportunities*



## 05.3 HILL DISTRICT

### Intent

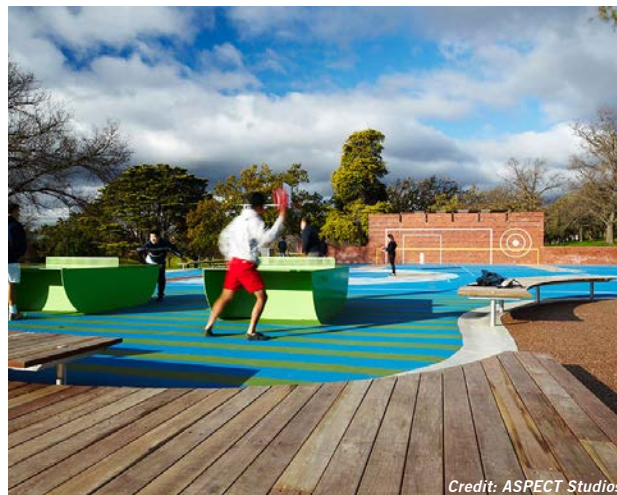
The Hill District park could potentially connect the site and City Place's proposed Second Street. Second Street connects northward and serves as an important bridge connection across Lafayette Street.

### Guidelines

- (A) Ramps and stairs should be aesthetically pleasing as well as functional.
- (B) Terraces along the grade change should be designed to serve as meeting points and visual landmarks. In bridging the grade change, the elevated open space should open views to Levi's Stadium, the Guadalupe River and beyond.
- (C) This park should include amenities to support the retail environment on Calle Del Sol such as flexible seating areas, social gathering spaces, play spaces and public art.
- (D) Surrounded by development on two sides, this park should be designed to be protected from wind and down-drafts from buildings with strategic tree planting and thoughtful siting of passive programming.



*Seating and landscape enhances and diversifies the functionality vertical circulation*



*Permanent game tables create a social gathering space*



*A variety of soft and hard scape creates a varied and interesting experience*



## 05.4 BRIDGE & CENTER DISTRICTS

### Intent

At the heart of the site, the parks in the Bridge and Center Districts will be a signature social element of the open space network. These parks are the ideal location for intimate neighborhood-serving amenities, because they are remote from busy Lafayette Street and Tasman Drive, but are still a short walk from the retail at Calle Del Sol.

### Guidelines

- (A) These parks can include a variety of landscaping treatments, and should feature urban plazas, tree-lined promenades, tot-lots, pocket gardens with seating areas and lawns.
- (B) Hardscape plazas and lawns should provide flexible spaces to accommodate a range of activities for the community, such as movies, picnics and community events.
- (C) The crossing at Calle de Luna should be designed to prioritize pedestrian safety and visibility using a raised tabletop intersection and warning lights.
- (D) Surrounded by development on two or three sides, these parks should be designed to be protected from wind and down-drafts from buildings with strategic tree planting and thoughtful siting of passive programming.



*The flexibility of a large lawn can allow for informal recreation like group exercise classes*



*Play areas are one of many program uses in this park.*



*The lawn can host community events like movie screening*



*Flexible seating areas create a signature amenity*



## 05.5 STATION DISTRICT

### Intent

The location and configuration of the open space in the Station District should be designed as an urban plaza to complement the gateway experience from the Lick Mill VTA Station and highlight this area as a center of activity for neighborhood residents, workers and visitors, see Figure 03-8-1.

### Guidelines

- (A) Station District Park should be one large plaza or form a network of plazas that offer an urban social space for the neighborhood and enhance connections between transit, greenways, open space and the retail experience of Calle del Sol.

- (B) Outdoor dining areas - either associated with restaurants or open seating - should support the connection to retail at Calle del Sol.
- (C) Plazas in this area should feature public art and other elements that enhance social interaction.
- (D) Plazas should be designed to maximize sunlight during the active hours of the day as well as visibility and public access.



*Credit: Rehwaldt Landschaftsarchitekten*

*Inviting play areas will attract families from the neighboring communities*



*Credit: Perkins + Will*

*Plazas should be nodes of activity within the block*



*Credit: Jim Campbell, Scattered Light, Northern Spark 2011  
Presented by Northern Lights.mn & Minnesota Museum of American Art*

*Public art can be experiential*



*Credit: Perkins + Will*

*Urban plazas can host community events*

## 05.6 GREENWAYS

### INTENT

Greenways are public thoroughways that provide a fine grain of connections to subdivide large blocks. They will take advantage of code-required fire separation between buildings to create a variety of walking connections that provide a human-scaled pedestrian experience. Public access easements will be required for greenways to ensure that they remain public at all times.

There is potential for sections of the same greenway to be constructed by separate entities, therefore the standards and guidelines below ensure that greenways will be designed cohesively.

### GUIDELINES

- (A) Greenways should provide two distinct paths: a minimum 12 foot wide, paved or raised boardwalk, shared use path for pedestrians, cyclists, strollers, etc and a 6 foot wide dirt/decomposed granite path for walking and jogging. These paths can either be side by side or separated by planted areas to count towards the 10-acre open space requirement.
- (B) Greenways may provide a minimum 20 foot wide access for emergency vehicles. This area can be partially planted as long as the planting can be driven over in case of emergency (i.e. grasses but not trees).
- (C) Up to 50% of the surface area of a greenway may be used for stormwater management. The remainder of the surface area shall be used to create urban, public spaces that provide opportunities for social gathering.

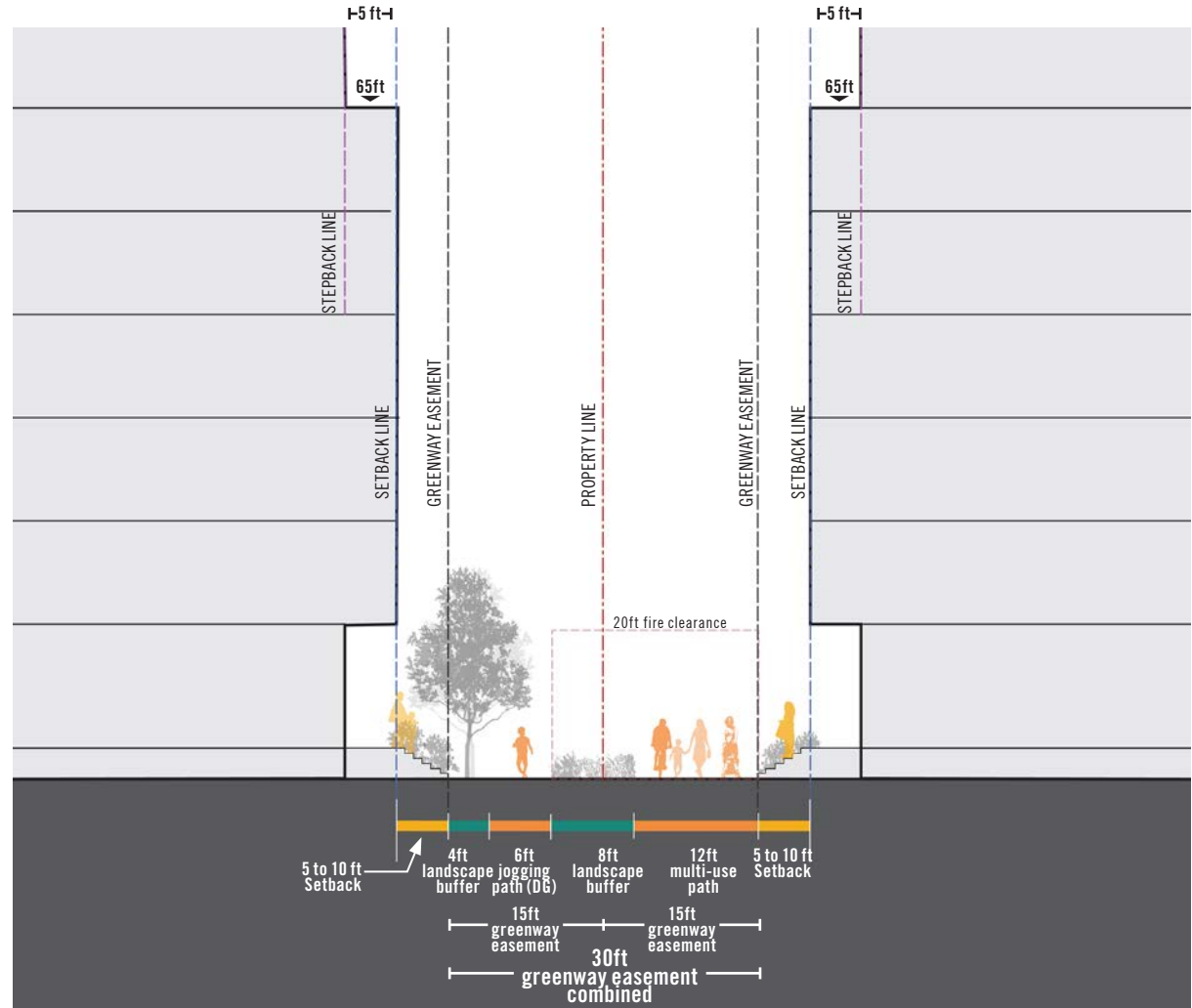


Figure 05-6-1 Greenway Section

- (D) Greenways should provide durable, low-maintenance seating at intervals of 100 feet or less to create rest areas for pedestrians. Consider more frequent seating for the comfort of people with limited mobility. Consider incorporating seating into other uses such as planters or stairs.
- (E) In the interim condition where only one half of a greenway is constructed at given phase, there should be a minimum 5 foot clear walkway provided. The interim design should be created to anticipate a complete, cohesive design when finished.



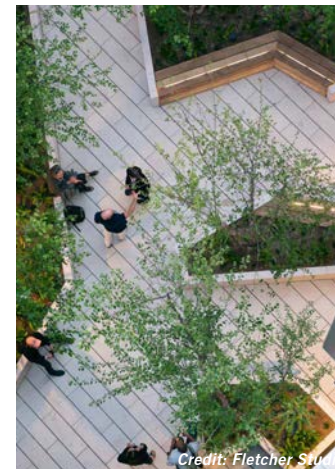
- (F) Greenways should apply a consistent palette of materials, paving, trees, lighting and street furnishings to ensure clarity and legibility of the greenway network. See Section 4.9 for paving and lighting standards, and Section 4.10 for tree selection guidance.
- (G) Greenways should be well-lit at night to ensure safety.
- (H) Greenways should have a diversity of plantings and stormwater treatment areas should be thoughtfully integrated into the overall design.
- (I) Greenway connections to open space should be aesthetically consistent.
- (J) Seating areas should have a variety of scales and be located at intervals along the greenways, branching off from the continuous pedestrian path. These spaces should be socially-oriented and connected to the main thoroughway with benches, planting and shade structures (where appropriate).
- (K) At important intersections or gathering places, consider the use of catenary lighting and overhead tree canopies to create a sense of enclosure and scale while maintaining pedestrian through-traffic.
- (L) Specify low-maintenance, durable street furnishings appropriate to adjacent uses and program.
- (M) Greenways should use a consistent family of

lighting fixtures. Lighting should be designed to limit light intrusion into residential units. Consider feature lighting at important non-residential entrances. Also see Section 4.9 Paving and Lighting for site-wide lighting guidelines.

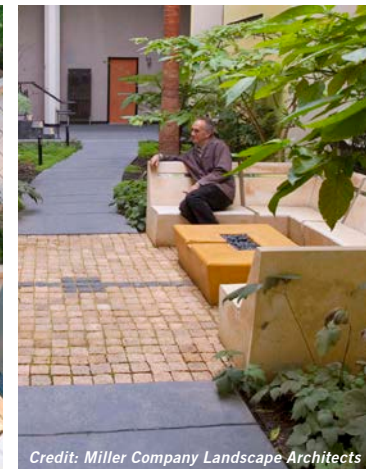
- (N) Create a rhythmic tree spacing based on mature size of species selected and the spacing of lighting. See also section 4.10 Urban Canopy for tree selection criteria.



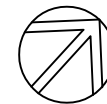
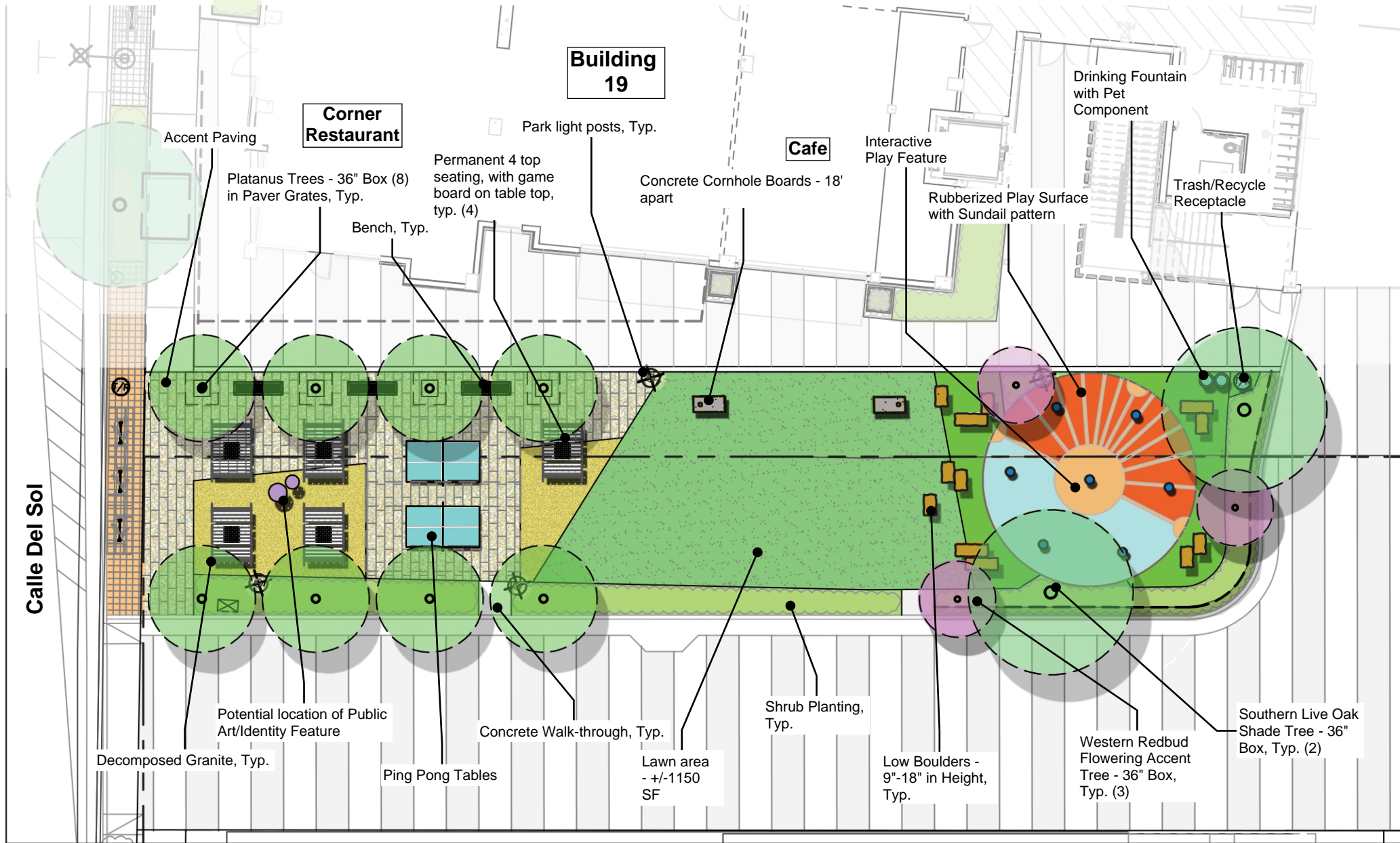
*Greenways will create an interesting and intimate experience for pedestrians and cyclists*



*Landscape-enhanced pedestrian environment*

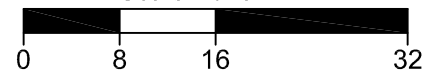


*Social seating areas*

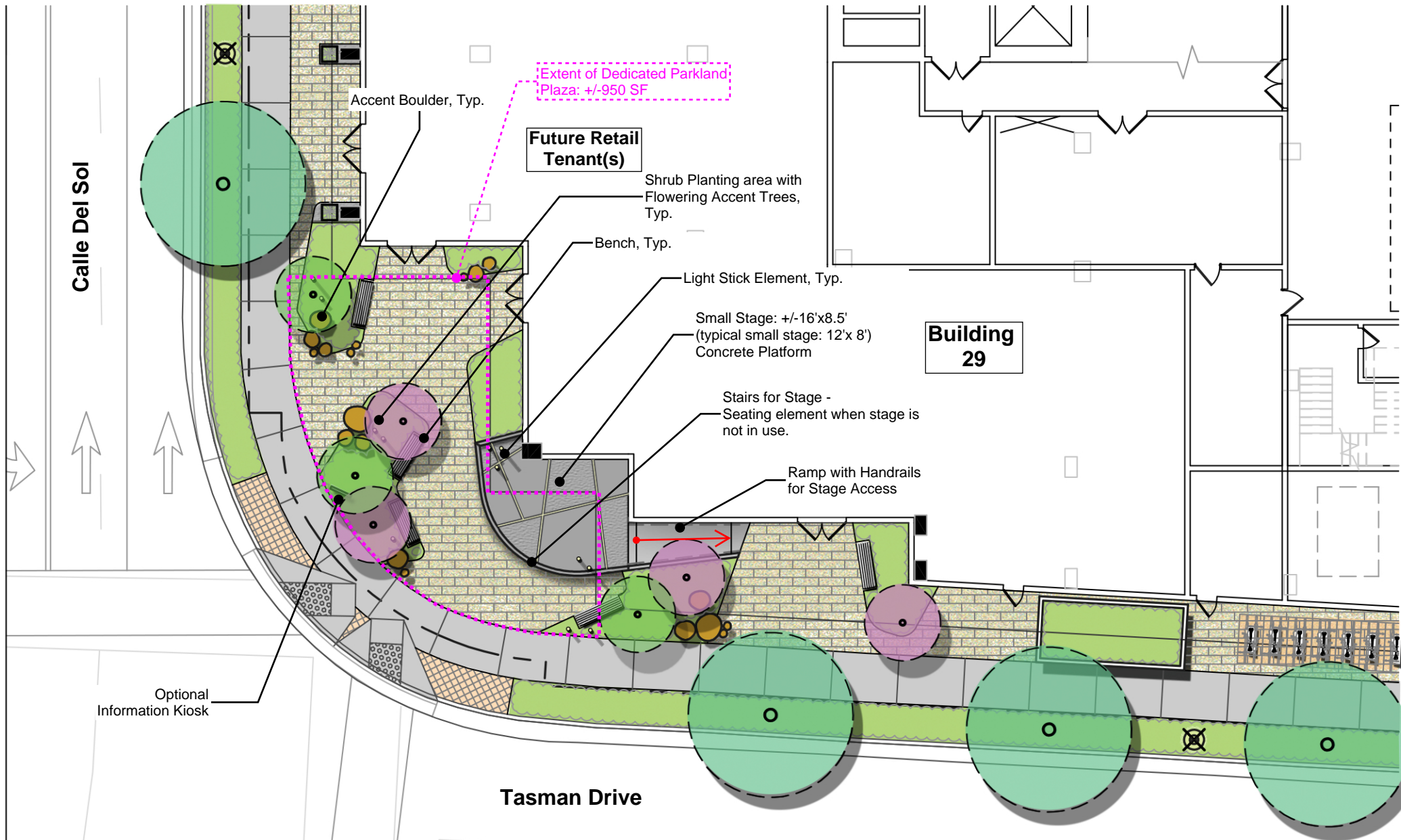


North

Scale: 1/16" = 1'

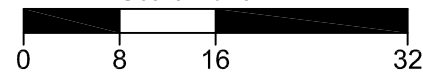






North

Scale: 1/16" = 1'





## Agenda Report

20-97

Agenda Date: 1/21/2020

### REPORT TO PARKS & RECREATION COMMISSION

#### **SUBJECT**

Action on Recommendation for Disbursement of Proceeds from the 2019 Santa Clara Art & Wine Festival

#### **BACKGROUND**

The City of Santa Clara Art & Wine Festival (Festival) completed its 39<sup>th</sup> consecutive year in Central Park and hosted over 50,000 attendees on the third weekend of September 2019. The event featured over 150 artist booths, three live entertainment stages, event sponsor activation booths, a “kid’s kingdom” with festival rides, City department services and information booths, a food alley, and a food court with over 25 local non-profit charities selling food and beverages.

The Festival generates revenue to cover expenditures from parking, artist jury fees, booth fees, sponsors, ATM fees, carnival ride tickets, as well as Parks & Recreation Commission (Commission) commemorative glass and token booths. The Parks & Recreation Department (Department) coordinates special event advanced planning, logistics, security, set-up, day of Festival support and clean-up. The Department and Commission also work extensively with contractors and community volunteers to ensure the success of the Festival. The City contracts with vendors to provide Festival tents, booths, staging, sound systems and live music/entertainment, security, carnival rides, marketing, portable toilets, communication/radios, ATMs, Square, and others. The City contracts with the Santa Clara Rotary Foundation to provide beer/wine service including ABC permit, beverages, supplies, equipment, materials, and volunteers.

In spring 2019, the Commission reviewed applications from non-profit community programs eligible to receive financial grants from the Festival. These included the Santa Clara Schools Foundation, Santa Clara High PTSA Grad Night Committee, Wilcox High PTSA Grad Night Committee, and Santa Clara Police Activities League. The Senior Center Health and Wellness Program provided volunteers for glass and token booths; it is a City program funded through the City General Fund, grants and donations.

#### **DISCUSSION**

On January 21, 2020, the Commission will review the 2019 Art & Wine Festival grant account revenues, expenditures and recommended grant amounts. The Festival grant account carryover balance as of July 1, 2019 was \$194,344. The Festival grant account maintains a target annual remaining balance of approximately \$150,000 to \$195,000 for future Festival start-up costs, materials, supplies, promotion, etc. Revenues from the 2019 Commission’s Festival glass and token sales were \$149,440 and expenditures were in the amount of \$130,910, resulting in net balance increase of \$18,530 for a Festival grant account remaining balance of \$212,874.

If \$60,000 is awarded in grants, the remaining balance will be \$152,874 for future Festival expenses.

Staff recommends that the Commission recommend that the City Council approve grant disbursements in the amount of \$60,000 as noted in the table below.

<b>Organization/Program Support</b>	<b>Amount</b>
Santa Clara Schools Foundation	\$20,000
Santa Clara Police Activities League	\$20,000
Santa Clara High School Grad Night	\$10,000
Wilcox High School Grad Night (aka Senior Send Off)	\$10,000
<b>Total to be disbursed:</b>	<b>\$60,000</b>

The Commission will be invited to attend the Council Meeting to recognize the non-profit organizations with the Council.

### **ENVIRONMENTAL REVIEW**

The action being considered does not constitute a "project" within the meaning of the California Environmental Quality Act ("CEQA") pursuant to CEQA Guidelines section 15378(b)(5) in that it is a governmental organizational or administrative activity that will not result in direct or indirect changes in the environment.

### **FISCAL IMPACT**

The Festival grant account, held in the Public Donations Fund, carryover balance as of July 1, 2019 was \$194,344. The Festival grant account maintains a target annual remaining balance of approximately \$150,000 to \$195,000 for future Festival start-up costs, materials, supplies, promotion, etc. Revenues from the 2019 Commission Festival glass and token sales were \$149,440 and expenditures were in the amount of \$130,910 (\$60,519 contractual; \$56,856 labor (transfer to Citywide Special Events program discussed below), materials/supplies \$13,535), resulting in a net balance increase of \$18,530 and a Festival grant account remaining balance of \$212,874. If \$60,000 is awarded in grants, the remaining balance will be \$152,874 for future Festival expenses.

<b>Park &amp; Recreation Fundraising Account</b>	
<b>Description</b>	<b>Amount</b>
Starting Balance/Reserve (as of July 1, 2019)	\$194,344
Revenue	\$149,440
Expense	(\$130,910)
<b>Subtotal:</b>	<b>\$212,874</b>
<b>Community Grants:</b>	<b>(\$60,000)</b>
<b>Carry forward for Future Festival:</b>	<b>\$152,874</b>

General Fund, Parks and Recreation Citywide Special Events program shares participation of the Festival. Its share of Festival operations is as follow: non-Commission Festival revenue generating activities such as artist jury and booth fees, food permit fees, ATM fees, parking fees were in the amount of \$119,717 with non-Commission Festival expenditures in the amount of \$105,713; netting \$14,004 of surplus.

**COORDINATION**

This report has been coordinated with the Finance Department and City Attorney's Office.

**PUBLIC CONTACT**

Public contact was made by posting the Parks & Recreation Commission's agenda on the City's official-notice bulletin board outside City Hall Council Chambers. A complete agenda packet is available on the City's website and in the City Clerk's Office at least 72 hours prior to a Regular Meeting and 24 hours prior to a Special Meeting. A hard copy of any agenda report may be requested by contacting the City Clerk's Office at (408) 615-2220, email [clerk@santaclaraca.gov](mailto:clerk@santaclaraca.gov) or at the public information desk at any City of Santa Clara public library.

**RECOMMENDATION**

Recommend that Council approve grant disbursements in the amount of \$60,000 to local programs and services.

Prepared by: Cheri Fulk, Management Analyst

Approved by: James Teixeira, Director of Parks & Recreation



## Agenda Report

20-94

Agenda Date: 1/21/2020

### REPORT TO PARKS & RECREATION COMMISSION

#### **SUBJECT**

Develop a Comprehensive List of Potential Names for Public Parks

#### **BACKGROUND**

According to Council Policy No. 035 (Attachment 1) the City Council names municipal facilities using the following guidelines:

- Individuals, living or deceased, who have made outstanding contributions to the City of Santa Clara or Santa Clara community;
- Individuals, living or deceased, who made contributions of local, state, national, or worldwide significance;
- Geographic location, prominent environmental feature(s), or historical significance e, of the area that the building/facility is located.

According to the same policy, the Parks & Recreation Commission (Commission) reviews all naming proposals for public park facilities at a publicly noticed meeting and make a recommendation to the Council Governance and Ethics Committee. The Governance and Ethics Committee reviews all naming recommendations at a publicly noticed meeting and may deny the recommendation or make a recommendation to the City Council for final approval.

At the November 19, 2019 Commission meeting (Attachment 2), the Commission recommended that the naming of the New Neighborhood Park located at 1205 Coleman Avenue, and the New Public Park located at 2343 Calle Del Mundo be tabled until one month after a comprehensive list of potential park names is developed by the Commission for consideration. In addition, the Commission recommended that each commissioner provide staff a list of three to four names (with sufficient background information about the name in conformance with the Council Policy) by the January 21, 2020, Parks & Recreation Commission meeting.

#### **DISCUSSION**

Under Council Policy No. 035 the Parks & Recreation Commission makes recommendations to the Governance and Ethics Committee for names of facilities relating to the Commission's purview, such as parks. Proposed names must be in accordance with at least one of the criteria outlined in Council Policy No. 035.

While staff does not have a recommendation, it advises that the Commission develop and provide a biographical sketch for each person nominated that provides an account of the life and activities of the individuals under consideration including information about the person's name, place of residence, education, occupation, life, and activities and other important details prior to making a recommendation to the Governance & Ethics Committee.

**ENVIRONMENTAL REVIEW**

The action being considered does not constitute a project within the meaning of the California Environmental Quality Act ("ECQA") pursuant to CEQA Guidelines section 15378(b)(5) in that it is a governmental organizational or administrative activity that will not result in direct or indirect changes in the environment.

**FISCAL IMPACT**

There is no fiscal impact to the General Fund for the current action.

**COORDINATION**

This report has been coordinated with the City Attorney's Office.

**PUBLIC CONTACT**

Public contact was made by posting the Parks & Recreation Commission agenda on the City's official-notice bulletin board outside City Hall Council Chambers. A complete agenda packet is available on the City's website and in the City Clerk's Office at least 72 hours prior to a Regular Meeting and 24 hours prior to a Special Meeting. A hard copy of any agenda report may be requested by contacting the City Clerk's Office at (408) 615-2220, email [clerk@santaclaraca.gov](mailto:clerk@santaclaraca.gov) or at the public information desk at any City of Santa Clara public library.

**RECOMMENDATION**

Develop a draft list and receive public input.

Reviewed by: Dale Seale, Deputy Director of Parks & Recreation

Approved by: James Teixeira, Director, Parks & Recreation

**ATTACHMENTS**

1. Council Policy No. 035
2. Draft Parks & Recreation Commission Minutes November 19, 2019





## **NAMING OF FACILITIES**

### **PURPOSE**

To establish the criteria and procedures for the naming of City of Santa Clara buildings and facilities.

### **POLICY**

The City Council shall name municipal buildings/facilities in recognition of the following:

- Individuals, living or deceased, who have made outstanding contributions to the City of Santa Clara or Santa Clara community
- Individuals, living or deceased, who have made contributions of local, state, national, or worldwide significance
- Geographic location, prominent environmental feature(s), or historical significance, of the area that the building/facility is located

For the purpose of this Policy, the term “facility” shall mean property, other than streets, owned by the City of Santa Clara, portions thereof, and amenities or appurtenances thereto. Examples of a “facility” include: a City park, a meeting room within a City building, a trail, or a park bench.

The renaming of existing municipal buildings/facilities shall be discouraged and shall occur only under extraordinary circumstances, after thorough study. A proposal for the renaming of an existing building or facility shall be subject to the same procedure as set forth below for the original naming of the building or facility.

### **PROCEDURE**

1. Proposals for naming of municipal buildings or facilities shall be referred to the responsible Department Head for the facility, detailing consistency with the policy criteria for naming of facilities.
2. Upon receipt of a naming or renaming proposal of a City building or facility, the Department Head will review if the proposed name is in accordance with at least one of the criteria as outlined in this policy:
  - a. An individual, living or deceased, who has made outstanding contributions to the City of Santa Clara or Santa Clara community
  - b. An individual, living or deceased, who has made contributions of local, state, national, or worldwide significance
  - c. Geographic location, prominent environmental feature(s), or historical significance, of the area that the building/facility is located

If the naming or renaming proposal is reflective of at least one of the



## **NAMING OF FACILITIES**

criteria, the Department Head will refer the proposal to the City Board, Commission, or Committee responsible for acting in an advisory capacity to the City Council for the building or facility at issue (e.g., a naming proposal for a park facility shall be referred by the Director of Parks and Recreation to the Parks and Recreation Commission).

If the naming or renaming proposal is not reflective of at least one of the criteria, after conferring with the City Manager's Office, the Department Head will express appreciation regarding the naming proposal to the proposer and explain the City's policy and the City's decision to decline the proposal.

3. After the Department Head forwards the proposal, the City Board, Commission, or Committee, shall review all naming proposals at a publicly noticed meeting and make a recommendation to the Governance and Ethics Committee.
4. The Governance and Ethics Committee shall review all naming recommendations at a publicly noticed meeting and deny the recommendation or make a recommendation to the City Council for final approval.
5. The City Council shall consider the naming recommendation at a publicly noticed meeting and will have final approval of all naming recommendations.

In the event the City Council denies a naming proposal, the City Manager's Office will express appreciation regarding the naming proposal to the proposer and explain the City's policy, and the City's decision to decline the proposal.

6. The City Council shall have the sole discretion to decide the naming of a facility.



# City of Santa Clara

## Meeting Minutes

### Parks & Recreation Commission

---

11/19/2019

7:00 PM

Cafeteria - City Hall East Wing  
1500 Warburton Avenue  
Santa Clara, CA 95050

---

#### **CALL TO ORDER AND ROLL CALL**

**Chair Knaack** called the meeting to order at 7:02 PM.

**Present** 6 - Chair Andrew Knaack, Vice Chair Joe Martinez, Commissioner George Guerra, Commissioner Kevan Michael Walke, Commissioner Roseann Alderete LaCoursiere, and Commissioner Eversley Forte

**Absent** 1 - Commissioner Burt Field

#### **CONSENT CALENDAR**

**1.A**     [19-1247](#)     Action on the Parks & Recreation Commission Minutes of the October 15, 2019 Meeting

**Recommendation:** Approve the Parks & Recreation Commission Minutes of the October 15, 2019 Meeting.

**Commissioner Guerra made a motion, seconded by Commissioner Walke to recommend approval of minutes.**

**Aye:** 6 - Chair Knaack, Vice Chair Martinez, Commissioner Guerra, Commissioner Walke, Commissioner Alderete LaCoursiere, and Commissioner Forte

**Absent:** 1 - Commissioner Field

#### **PUBLIC PRESENTATIONS**

Susan Hinton, a member of the public, appreciated the detailed work and outreach done by staff in the Central Park Master Plan. She commented on the potential installation of synthetic turf on Fatjo Field in the Central Park Master Plan, and expressed her view that it would be best if Fatjo Field would remain as an improved natural grass field in the future without any of the disadvantages of synthetic turf.

#### **GENERAL BUSINESS**

2. [19-1353](#) Presentation and Action on Central Park Master Plan Update and Draft Ordinance in accord with City Charter section 714.1

**Recommendation:** Recommend that Council approve the Central Park Master Plan including the Schematic Design Update and project phasing and Introduce an Ordinance in accordance with City Charter section 714.1.

**Commissioner Field** entered the meeting at 7:05 PM.

**Commissioner Walke made a motion, seconded by Commissioner LaCoursiere to recommend that Council approve the Central Park Master Plan including the Schematic Design Update and project phasing and introduce an ordinance in accordance with City Charter section 714.1.**

**Aye:** 7 - Chair Knaack, Vice Chair Martinez, Commissioner Guerra, Commissioner Field , Commissioner Walke, Commissioner Alderete LaCoursiere, and Commissioner Forte

3. [19-1244](#) Recommendation to the Governance and Ethics Committee to Name the New Neighborhood Park located at 1205 Coleman Avenue (Gateway Crossings)

**Recommendation:** Recommend a Name for the Governance and Ethics Committee consideration for the New Neighborhood Park located at 1205 Coleman Avenue.

**Commissioner Guerra made a motion, seconded by Commissioner Martinez that Item 3. be tabled until one month after a comprehensive list of potential park names is provided to the Commission.**

**Aye:** 7 - Chair Knaack, Vice Chair Martinez, Commissioner Guerra, Commissioner Field , Commissioner Walke, Commissioner Alderete LaCoursiere, and Commissioner Forte

4. [19-1245](#) Recommendation to the Governance and Ethics Committee to Name the New Public Park located at 2343 Calle Del Mundo.

**Recommendation:** Recommend a Name for the Governance and Ethics Committee consideration for the New Public Park located at 2343 Calle Del Mundo (SummerHill Residential Project).

**Commissioner Guerra made a motion, seconded by Commissioner Martinez that Item 4. be tabled until one month after a comprehensive list of potential park names is provided to the Commission.**

**Commissioner Guerra made a motion, seconded by Commissioner Walke that each Commissioner provide staff a list of three to four names by January 21, 2020, Parks & Recreation Commission Meeting.**

**Aye:** 7 - Chair Knaack, Vice Chair Martinez, Commissioner Guerra, Commissioner Field , Commissioner Walke, Commissioner Alderete LaCoursiere, and Commissioner Forte

5. [19-1246](#) Parks & Recreation Commission Work Plan Goals for FY 2019/20

The subcommittee visited the 30+ acre park site located in the north of the City on October 28, 2019. They reported back to the Commission about their initial thoughts about major recreational activities that would benefit the community considering the size of the site, sloped areas and the higher elevation upland area of the site. The subcommittee will continue to develop a methodology and timeline to conduct robust outreach with an array of stakeholders in the early stages of collaboration before the City develops the 30+ acre park site. In addition, Deputy Director Seale will provide reference literature regarding the recent conversion of golf courses to park land.

**STAFF REPORT**

**Deputy Director Seale** reported to the Commission regarding the ribbon cutting for the newly rehabilitated playground at Bowers Park. The Mayor and City Manager led the community in opening the new playground. Hundred of park patrons attended the event. The new Bowers Park playground was designated as a National Demonstration site in three distinct categories by Playcore: the 7 Principles of Inclusive Design, Nature Grounds, and Play On. The other park projects are progressing, including Reed & Grant Streets Sports Park, Machado Park, Homeridge Park, Agnew Park, and Fuller Park. The Machado Park Playground Rehabilitation Project will continue, as there was a delay due to a design change to enhance the play value of the hillside slide.

The Tree Lighting Ceremony will be on December 6, 2019. Commissioners are requested to be present at base camp for the Tree Lighting Ceremony at 4:00 PM. The ice rink will open to the public on November 21, 2019.

**COMMISSIONERS REPORT**

**Commissioner Field:** Visited the Palo Alto Magical Bridge Playground. He commented on the large and diverse crowd enjoying the playground on a weekday. He looks forward to the construction of a new Magical Bridge All-Inclusive Playground in Santa Clara. Commissioner Field also visited the Reed & Grant Streets Sports Park site.

**Commissioner Forte:** Attended the Bowers Park Playground Ribbon Cutting event.

**Commissioner Guerra:** Visited Maywood Park and Mary Gomez Park.

**Chair Knaack:** Attended the Bowers Park Playground Ribbon Cutting event and was pleased with the transformation of the playground and park. He will be attending the Charlotte's Web play in late November. He also visited the 30+ acre park site with the other subcommittee members.

**Commissioner LaCoursiere:** Attended October Fest at Westwood School which was very successful. She also attended the Hoop Shoot sponsored by the Elks at the Youth Activity Center. Commissioner LaCoursiere was very pleased to work with Recreation Supervisor Gayle Icho, and staff. Visited the 30+ acre park site with the other subcommittee members.

**Commissioner Martinez:** Visited the 30+ acre park site with the other subcommittee members.

**Commissioner Walke:** Visited Central Park, and attended the PAL Soccer Tournament which had over 2,000 participants. He also visited the Reed & Grant Streets Sports Park site, and Montague Park.

**ADJOURNMENT**

**Commissioner Guerra made a motion, seconded by Commissioner Martinez to cancel the December 17, 2019 Parks & Recreation Commission Meeting, and adjourn the meeting until the regularly scheduled meeting at 7:00 PM on January 21, 2020.**

**Aye:** 7 - Chair Knaack, Vice Chair Martinez, Commissioner Guerra, Commissioner Field, Commissioner Walke, Commissioner Alderete LaCoursiere, and Commissioner Forte