



City of Santa Clara

Meeting Agenda

Parks & Recreation Commission

Tuesday, November 17, 2020

7:00 PM

Virtual Meeting

Pursuant to the provisions of California Governor's Executive Order N-29-20, issued on March 17, 2020, to prevent the spread of COVID-19, the City of Santa Clara has implemented methods for the public to participate remotely:

Via Zoom:

<https://santaclaraca.zoom.us/j/91316665755>

Meeting ID: 913 1666 5755 or

Phone: (669) 900-6833

The meeting set-up is in line with the recommendations of the COVID-19 White House Task Force, which notes no more than ten (10) people gathering.

CALL TO ORDER AND ROLL CALL

CONSENT CALENDAR

- 1.A 20-1086 [Action on the Parks & Recreation Commission Minutes of the October 20, 2020 Meeting](#)**

Recommendation: Approve the Parks & Recreation Commission Minutes of the October 20, 2020 Meeting.

PUBLIC PRESENTATIONS

GENERAL BUSINESS

- 2. 20-1172 [Consideration of the Proposed Schematic Design for the Fairway Glen Park Restroom Project](#)**

Recommendation: Recommend City Council Approval of the Fairway Glen Park Restroom Project Schematic Design (Option One, or Option Two) and a Park Master Plan Update to include the proposed restroom building.

- 3. 20-1087 [Introduction of an Integrated Goose Management Plan for Central Park and Recommendation](#)**

Recommendation: Recommend Council approval of an Integrated Goose Management Plan for Central Park.

4. 20-1079 [Recommend Eligibility Criteria for the Community Garden Program at the Mini Park Located at 3450 Copper Place](#)

Recommendation: Recommend community garden eligibility criteria (geographic proximity, income, age, and residency) in the following priority order: (1) Santa Clara residents living within the Community Facilities District No. 2019-1 (Lawrence Station) boundaries, (2) Santa Clara residents who are Low Income, (3) Santa Clara residents 55 years and older, and/or families with children under age 18, (4) Other City of Santa Clara residents.

5. 20-1081 [Recommend Approval of Proposed Community Garden Guiding Principles & Rules for the Mini Park Located at 3450 Copper Road](#)

Recommendation: Recommend that Council approve the Community Garden Guiding Principles & Rules for the Mini Park Located at 3450 Copper Road.

6. 20-1090 [Recommendation to the Governance and Ethics Committee to Name the New Public Parks located at 5123 Calle Del Sol.](#)

Recommendation: Recommend a name for the Governance and Ethics Committee consideration for the New Public Park and/or the New Public Park Plaza located at 5123 Calle Del Sol (Ensemble Residential Project).

STAFF REPORT

COMMISSIONERS REPORT

ADJOURNMENT

The next meeting will be at 7:00 p.m. on December 15, 2020.



City of Santa Clara

1500 Warburton Avenue
Santa Clara, CA 95050
santaclaraca.gov
[@SantaClaraCity](https://twitter.com/SantaClaraCity)

Agenda Report

20-1086

Agenda Date: 11/17/2020

REPORT TO PARKS & RECREATION COMMISSION

SUBJECT

Action on the Parks & Recreation Commission Minutes of the October 20, 2020 Meeting

RECOMMENDATION

Approve the Parks & Recreation Commission Minutes of the October 20, 2020 Meeting.

Prepared by: Dale Seale, Deputy Director of Parks & Recreation

Approved by: James Teixeira, Director of Parks & Recreation

ATTACHMENTS

1. Draft - Parks & Recreation Commission Minutes of the October 20, 2020 Meeting



City of Santa Clara

Meeting Minutes

Parks & Recreation Commission

10/20/2020

7:00 PM

Virtual Meeting

Pursuant to the provisions of California Governor's Executive Order N-29-20, issued on March 17, 2020, to prevent the spread of COVID-19, the City of Santa Clara has implemented methods for the public to participate remotely:

Via Zoom:

<https://santaclaraca.zoom.us/j/91316665755>

Meeting ID: 913 1666 5755 or

Phone: (669) 900-6833

The meeting set-up is in line with the recommendations of the COVID-19 White House Task Force, which notes no more than ten (10) people gathering.

CALL TO ORDER AND ROLL CALL

Chair Martinez called the meeting to order at 7:08 PM.

Present 6 - Commissioner Andrew Knaack, Chair Joe Martinez, Commissioner George Guerra, Vice Chair Eversley Forte, Commissioner Derreck Carter-House, and Commissioner Kelly Gonzalez

Absent 1 - Commissioner Burt Field

Commissioner Carter-House made a motion, seconded by Commissioner Gonzalez to excuse Commissioner Field.

Aye: 6 - Commissioner Knaack, Chair Martinez, Commissioner Guerra, Vice Chair Forte, Commissioner Carter-House, and Commissioner Gonzalez

Excused: 1 - Commissioner Field

CONSENT CALENDAR

Commissioner Carter-House made a motion, seconded by Commissioner Guerra to approve the Consent Calendar

Aye: 6 - Commissioner Knaack, Chair Martinez, Commissioner Guerra, Vice Chair Forte, Commissioner Carter-House, and Commissioner Gonzalez

Excused: 1 - Commissioner Field

- 1.A [20-978](#) Action on the Parks & Recreation Commission Minutes of the September 15, 2020 Meeting

Recommendation: Approve the Parks & Recreation Commission Minutes of the September 15, 2020 Meeting.

PUBLIC PRESENTATIONS

Commissioner Field entered the meeting at 7:15 PM.

GENERAL BUSINESS

2. [20-912](#) Consideration of the Proposed Schematic Design for the Magical Bridge All-Inclusive Playground Project in Central Park (Council Pillar: Enhance Community Sports, Recreational and Arts Assets)

Recommendation: Recommend City Council Approval of the Magical Bridge All Inclusive Playground in Central Park Schematic Design.

Commissioner Guerra made a motion, seconded by Commissioner Forte to recommend City Council approval of the Magical Bridge All-Inclusive Playground in Central Park Schematic Design.

Aye: 7 - Commissioner Knaack, Chair Martinez, Commissioner Guerra, Commissioner Field, Vice Chair Forte, Commissioner Carter-House, and Commissioner Gonzalez

3. [20-982](#) Recommendation to the Governance and Ethics Committee to Name the New Public Parks located at 5123 Calle Del Sol.

Recommendation: Recommend a Name(s) for the Governance and Ethics Committee consideration for the New Public Park and/or the New Public Park Plaza located at 5123 Calle Del Sol (Ensemble Residential Project).

Commissioner Carter-House made a motion, seconded by Commissioner Gonzalez to continue Item 3. (File 20-982) until the November 17, 2020 Parks & Recreation Meeting.

Aye: 7 - Commissioner Knaack, Chair Martinez, Commissioner Guerra, Commissioner Field, Vice Chair Forte, Commissioner Carter-House, and Commissioner Gonzalez

4. [20-980](#) Recommendation to the Governance and Ethics Committee to Name the New Neighborhood Park located at 1205 Coleman Avenue (Gateway Crossings)

Recommendation: Recommend a Name for the Council Governance and Ethics Committee's consideration for the New Neighborhood Park located at 1205 Coleman Avenue.

Commissioner Gonzalez made a motion, seconded by Commissioner Carter-House to recommend to the Governance and Ethics Committee to name the new neighborhood park located at 1205 Coleman Avenue the Zahra Billoo Park.

Aye: 4 - Commissioner Knaack, Vice Chair Forte, Commissioner Carter-House, and Commissioner Gonzalez

Nay: 3 - Chair Martinez, Commissioner Guerra, and Commissioner Field

5. [20-981](#) Recommendation to the Governance and Ethics Committee to Name the New Public Park located at 2343 Calle Del Mundo.

Recommendation: Recommend a Name for the Council Governance and Ethics Committee's consideration for the New Public Park located at 2343 Calle Del Mundo (SummerHill Residential Project).

Commissioner Guerra made a motion, seconded by Commissioner Forte to recommend to the Governance and Ethics Committee to name the new public park located at 2343 Calle Del Mundo the Calle Del Mundo Park.

Aye: 7 - Commissioner Knaack, Chair Martinez, Commissioner Guerra, Commissioner Field, Vice Chair Forte, Commissioner Carter-House, and Commissioner Gonzalez

6. [20-1005](#) Recommend Nominee(s) for Consideration as the "Honorary Holiday Tree Lighter 2020" for the Annual Holiday Tree Lighting Ceremony on Friday, December 4, 2020.

Recommendation: Recommend a nominee, or nominees to the Mayor for consideration as "Honorary Holiday Tree Lighter 2020."

Commissioner Gonzalez made a motion, seconded by Commissioner Guerra to recommend for consideration the Kaiser Permanente Intensive Care Unit Workers as Honorary Holiday Tree Lighters at the Annual Tree Lighting Ceremony 2020.

Aye: 7 - Commissioner Knaack, Chair Martinez, Commissioner Guerra, Commissioner Field, Vice Chair Forte, Commissioner Carter-House, and Commissioner Gonzalez

7. [20-979](#) Recommend Parks & Recreation Commission Work Plan Goals for FY 2020/21

Recommendation: Recommend Parks & Recreation Commission Work Plan Goals for FY 2020/21, and appoint subcommittee as needed.

Commissioner Knaack made a motion, seconded by Commissioner Carter-House to recommend City Council approval of Work Plan Goals for FY 2020/21.

Aye: 7 - Commissioner Knaack, Chair Martinez, Commissioner Guerra, Commissioner Field , Vice Chair Forte, Commissioner Carter-House, and Commissioner Gonzalez

STAFF REPORT

Deputy Director Seale provided the update on park projects. The Agnew Park playground rehabilitation project is complete, and the pathway repair will be underway starting in late October. The Department has also begun to work on the Request for Proposal (RFP) for the Bowers Park Roof Project. The Fairway Glen Park restroom project is in the community outreach and schematic design phase. Fuller Street Park Phase II (sports courts) is now complete and park patrons are already enjoying the new amenities. The Homeridge Park Playground Rehabilitation Project is expected to be completed towards the end of November. The Machado Park Playground Rehabilitation Project is complete. The construction at Lawrence Station Area Parks is continuing with weekly scheduled construction meetings. Meadow Park, and Redwood Trail are complete and will be part of the virtual ribbon cutting event. The Montague Park Rehabilitation Project is at the 100% plan phase, and is under review with various departments. Construction on the Raymond G. Gamma Dog Park Rehabilitation Project started in October. The Reed & Grant Street Sports Park fields are complete, along with the maintenance building. The Jerry Marsalli Building still has some detail work remaining, which is scheduled for completion in November. Soft opening of the facility is scheduled for late October.

Recreation Manager Castro provided the update on recreation programs. Recreation is celebrating Halloween with the Halloween decorating contest by district, and 'You've Been Treated Neighborhood Activity'. The Department has been video taping several playgrounds and facilities using the 'Play It Safe Santa Clara' message regarding opening playgrounds and sports courts using established protocols for the public to play safe. Playgrounds open on Wednesday, October 28. There are several park and playground virtual ribbon cuttings, which were delayed due to COVID-19. The Commission is invited to a virtual socially distanced first kick event for opening the Reed & Grant Sports Park on Thursday, October 22. It is a closed event with only invited guests allowed, included two team cohorts from Santa Clara Youth Sporting.

Director Teixeira concluded by focusing on health and wellness, encouraging everyone to follow the Health & Safety First protocols as we open playgrounds during the COVID-19 pandemic. The Department continues to provide essential services as Disaster Service Workers, such as the daily distribution of meals at the Senior Center CPOD. In addition, the Department provided relief from poor air quality due to smoke, and cooling center services at the Senior Center over the past few months. The commissioners will notice that at our parks and playgrounds we have Health & Safety First signage to provide guidance to the community to

reduce the spread of COVID-19.

COMMISSIONERS REPORT

Commissioner Carter-House: Visited Lick Mill Park and the 34+ acre community park site in the north part of the City. He noted many people are using parks and tennis courts, and described how QR codes may be used in the future to conduct community outreach for park projects.

Commissioner Field: Visited Reed & Grant Sports Park and is excited to see the facility open soon. Visited the Magical Bridge playground in Palo Alto.

Commissioner Forte: Visited Warburton Park and the 34+ acre community park site in the north part of the City.

Commissioner Gonzalez: Visited Youth Soccer Park, and Henry Schmidt Park. She noticed parks in general are packed, which has the added impact on cleanliness.

Commissioner Guerra: Visited Reed & Grant Sports Park, and is anxious to see the other amenities in the park. He also visited Central Park and the ISC, which is being used quite a bit.

Commissioner Knaack: Visited Lick Mill Park, Live Oak Park, Fuller Street Park, Thamien Park, and Montague Park. He noticed people continually removing caution tape around the playgrounds and using them.

Commissioner Martinez: Visited Machado Park, Waburton Park, Rotary Park and Larry Marsalli Park.

ADJOURNMENT

Commissioner Guerra made a motion, seconded by Commissioner Knaack to adjourn the meeting at 9:54 PM until the next regularly held meeting at 7:00 PM on November 17, 2020.

Aye: 7 - Commissioner Knaack, Chair Martinez, Commissioner Guerra, Commissioner Field, Vice Chair Forte, Commissioner Carter-House, and Commissioner Gonzalez



Agenda Report

20-1172

Agenda Date: 11/17/2020

REPORT TO PARKS & RECREATION COMMISSION

SUBJECT

Consideration of the Proposed Schematic Design for the Fairway Glen Park Restroom Project

Council Pillar

Enhance Community Sports, Recreational and Arts Assets

BACKGROUND

Council approved the FY2019/20 Capital Improvement Program (CIP) Budget, including Project #3186 to construct a restroom building to serve users of Fairway Glen Park, located at 2051 Calle de Primavera. The neighborhood park currently has accessible play spaces for ages 2-5 and 6-12, two tennis courts, a BBQ area, a large grass meadow, and landscaping.

In mid-2020, the City hired SSA Landscape Architects, Inc. to design a restroom building within budget, and to solicit community input. The restroom building will provide two accessible stalls, drinking fountain with water bottle filler & dog bowl, and a maintenance/utility chase; the project includes new utility connections, ADA entry, security lighting, camera, touchless faucets and hand dryers, and modest landscaping. A site evaluation identified two potential locations convenient to utilities and compatible with the park's overall site plan.

Community Outreach.

From October 3 to October 21, 2020, the City design team conducted an online community survey through the City's Open City Hall digital platform, invited participation through various social media, and provided images to illustrate the options. The City had 109 attendees and 70 responses with approximately 3.5 hours of public comment. The community comment was clear on the proposed restroom location with 62% preferring Option B which is midway between the playground and picnic area, and tennis court amenities. The public input preferred (by more than 18-30% above the next closest preferences) a standing seam roof (54%), board and batten siding (44%), and stone veneer (85%). The input had a less clear preference on the color palate (39-35-26%). The building design will comply with current building codes and regulations.

DISCUSSION

At the November 17, 2020, Parks & Recreation Commission Meeting, the Commission will consider and finalize a recommendation to Council on the Schematic Design (Attachment 1) for the restroom building and motion will include recommendation of the color scheme Option one, or Option two.

MEASURE R

The recommendation for changes to the existing Fairway Glen Park may be subject to Measure R. In November 2016, voters passed Measure R, which added Section 714.1 Protection of Parkland and Public Open Space to the City Charter. Measure R prohibits selling, leasing, or otherwise disposing of parkland for a period of one hundred eighty (180) days or more, and also prohibits its use from

changing, being abandoned, or discontinued without such sale, lease, disposal or changed use having first been authorized or ratified by a two-thirds majority vote of the electorate during a general municipal election for that purpose. Measure R also prohibits changes in park use for over 180 days without a majority vote of the electorate and substantial building, construction, reconstruction or development upon dedicated parkland except pursuant to ordinance subject to referendum. The referendum process is set forth in the Elections Code.

The recommendation to approve the Fairway Glen Park Restroom Schematic Design, which will also therefore update the Fairway Glen Park Master Plan to include the restroom building, may be considered as “substantial building, construction, reconstruction, or development” of the existing park. The approval of the schematic design will require an ordinance in order to comply with Measure R and will be introduced as part of the Council’s consideration of the Commission recommendation. The ordinance does not include a sale, lease, disposal, or change in park use requiring a majority vote of the electorate. Staff will recommend that City Council introduce an ordinance to ensure compliance with Measure R. The ordinance will come back to Council at a subsequent meeting for adoption in accordance with City Charter sections 808 and 812.

ENVIRONMENTAL REVIEW

The action being considered is exempt from the California Environmental Quality Act (“CEQA”) pursuant to CEQA Guidelines sections 15301 “Existing Facilities”, 15302 “replacement or reconstruction”, and 15303 “new construction or conversion of small structures” as the activity consists of the operation, repair, maintenance, permitting or minor alteration of existing public facilities or topographical features involving negligible expansion of use beyond that existing at the time of the lead agencies determination.

FISCAL IMPACT

The FY2019/20 Capital Improvement Program (CIP) Budget Project #3186 has an approved budget allocation of \$900,000 for design, construction, administration, permits and contingency. Current maintenance activities for the park are included in the Parks & Recreation Department annual operating budget.

PUBLIC CONTACT

Public contact was made by posting the Parks & Recreation Commission’s agenda on the City’s official-notice bulletin board outside City Hall Council Chambers. A complete agenda packet is available on the City’s website and in the City Clerk’s Office at least 72 hours prior to a Regular Meeting and 24 hours prior to a Special Meeting. A hard copy of any agenda report may be requested by contacting the City Clerk’s Office at (408) 615-2220, e-mail clerk@santaclaraca.gov or at the public information desk at any City of Santa Clara public library

RECOMMENDATION

Recommend City Council Approval of the Fairway Glen Park Restroom Project Schematic Design (Option One, or Option Two) and a Park Master Plan Update to include the proposed restroom building.

Approved by: James Teixeira, Director of Parks & Recreation

ATTACHMENTS

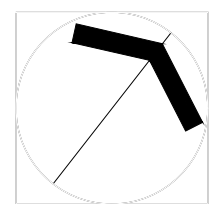
1. Fairway Glen Park Restroom Project Schematic Design

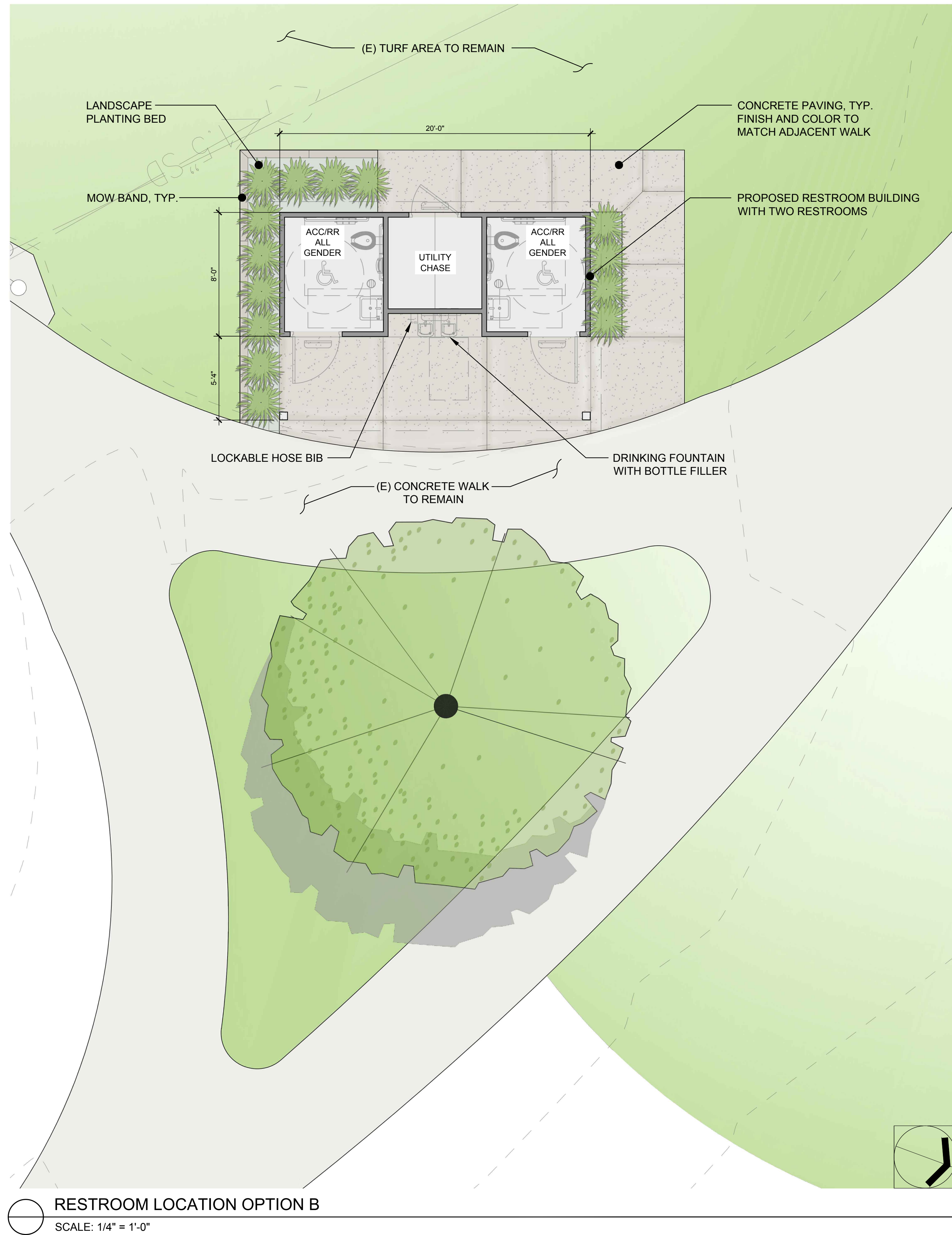


PROPOSED RESTROOM LOCATION

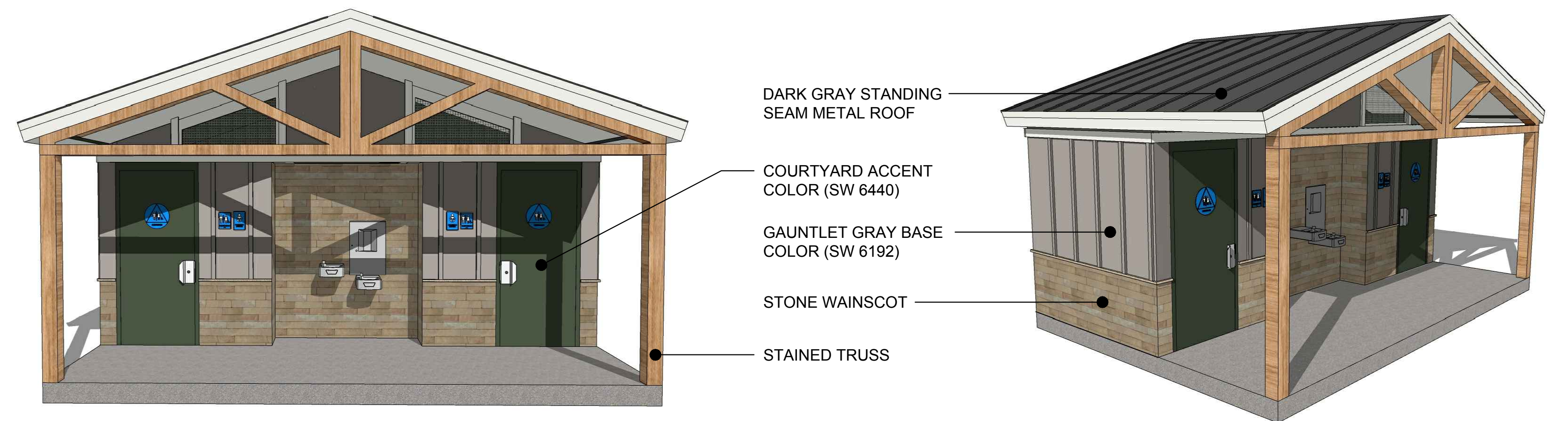
FAIRWAY GLEN PARK RESTROOM CONSTRUCTION PROJECT

2070 CALLE DE PRIMAVERA
SANTA CLARA, CA

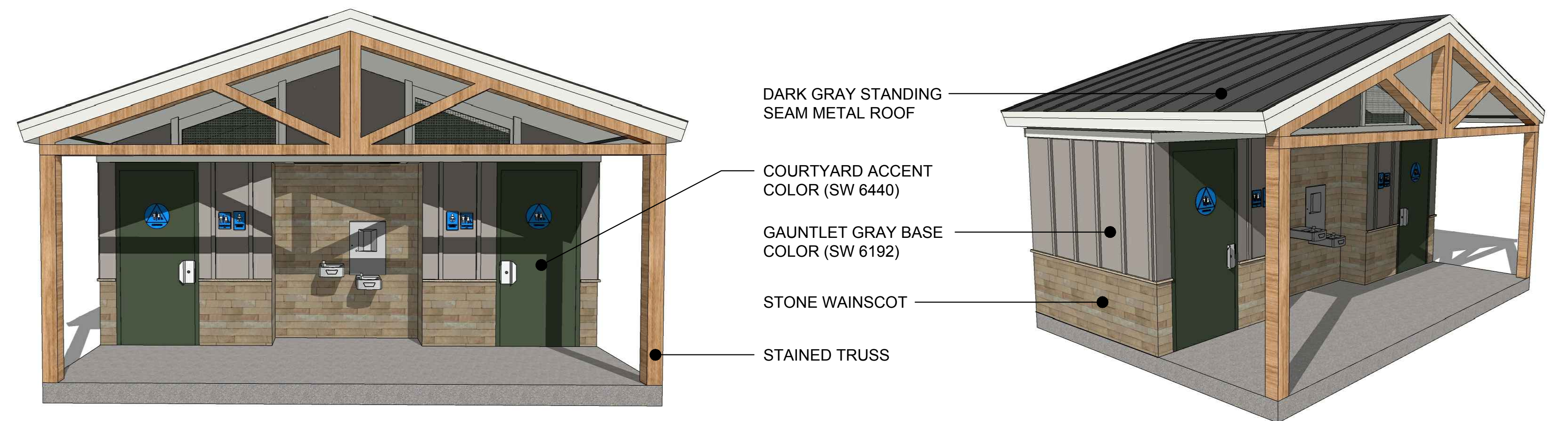




RESTROOM COLOR OPTION 01



RESTROOM COLOR OPTION 02



RESTROOM LOCATION ENLARGEMENT

FAIRWAY GLEN PARK RESTROOM CONSTRUCTION PROJECT

2070 CALLE DE PRIMAVERA
SANTA CLARA, CA



Agenda Report

20-1087

Agenda Date: 11/17/2020

REPORT TO PARKS & RECREATION COMMISSION

SUBJECT

Introduction of an Integrated Goose Management Plan for Central Park and Recommendation

BACKGROUND

The City of Santa Clara Central Park includes the Central Park Lake, surrounded by planted areas and grass that attract waterfowl. Over the past few years, the Canada Geese and Mallards population has increased and produced excessive amounts of waste that exceeds the capacity of the daily grounds maintenance program to keep pathways, fields, meadows and recreational amenities clean and sanitary for public use. Each Canada Goose produces approximately a pound and half of feces per day, which deposits into the lake and its surroundings more than 600 pounds per day. The Central Park Canada Goose population is non-migratory. They forage and nest at the site, thereby creating several negative impacts year-round at the community park.

The management activities of the Canada Goose and Mallards are regulated by the Federal Migratory Bird Treaty Act of 1918 and subsequent revisions, and the U.S. Fish and Wildlife Service (USFWS). While the City has used various approved methods to deter geese, such as movable predator land decoys (coyote mannequins); floating water decoys (alligator mannequins), geese panic sounds, grass treatments, and physical barriers, additional steps are needed to address the community's complaints and concerns, as well as to educate and inform policy and management practices that include the community's understanding and support. To that end, the City has retained the services of avian biologist, Daniel Edelstein, who has specific Bay Area experience and who has developed a draft Integrated Goose Management Plan (IGMP) in order to provide community, staff and Council with research, information and proposed effective strategies to protect the wildlife while reducing the increasingly negative and unsustainable impacts the Canada Goose and Mallard have on the Central Park lake water quality, plants, pathways, recreational amenities, fields and visitor's park use.

DISCUSSION

The IGMP proposes four management actions discussed below for City consideration and implementation.

- 1) **Management Action 1:** Conduct community outreach and provide information to Santa Clara residents and media to educate the general public about the current issues at Central Park and proposed necessary geese and mallard management actions that may be taken to address them. Implementation of Management Action 1 will help the public understand the problems, issues and options available to the City to address the Canada Goose and Mallard problem. This includes:
 - a) Preparation of information about the current population and effects caused by the Canada Goose at Central Park, and outreach to the local Santa Clara Valley Audubon Society

(SCVAS) chapter and the Bay Area chapter of the Sierra Club to engage in discussion of the issues. This may include request of support from the Boards of Directors to communicate with their membership and public, and/or request a formal letter of support for the IGMP.

- b) Enrollment of the groups' support of various effective management actions through public "scoping" and "public comment" meetings to ensure ongoing community understanding and support for the City's methodology, plans and actions discussed in the IGMP.
- c) Work with the City Communications Office to develop and distribute media releases to the Santa Clara and local media, and informational articles and/or videos to help the general public understand the issues and proposed management actions.

2) Management Action 2: Develop Interpretive Signs and materials to Educate Central Park Visitors. This includes:

- a) Development of text content and graphic elements for installation along the Central park pathways. The purpose is provide information to visitors who may not be aware of the current issues caused by Canada Goose and Mallards, inform visitors about management strategies to address the problems, and help visitors understand the Canada Goose, Mallard, and other wildlife species that use Central Park and how and why management plans are implemented.
- b) Develop other materials/programs including: an educational brochure handout, community meetings (as allowed with COVID19 Health & Safety Orders and protocols) such as a nature walk/bird outing, and virtual component.

3) Management Action 3: In order to effectively address the negative effects of the current and growing population of Canada Goose and Mallard at Central Park, this action contemplates implementation of permitted management practices in conformance with Federal, State and local laws, as well as regulatory oversight and permits. These are in priority order.

- a) Harassment Plan. The development and submission to City authorities for review and approval for a plan for ongoing, daily, humane harassment and disturbance of Canada Goose and Mallard foraging behavior and presence in Central Park. This may include supervised use of dogs by permit, or professional contract.
- b) Depredation Plan & Permits. Applications and documentation will developed in support of obtaining from the U.S. Fish & Wildlife Service (USFWS) separate Depredation Order(s) and Permit(s) for Canada Goose and Mallard. This includes a letter of proof, describing the damages each specie is causing at Central Park, receiving City authorization and communicating with USFWS authorities.
- c) Habitat Alteration(s) Plan. Design an effective goose and duck fence/barrier for City installation around the perimeter of the Central Park lake.
- d) Goose Repellant Plan. Write a plan for the effective use of goose repellant products on the market, and pros and cons, and public preferences.

4) Management Action 4: Adoption of the written Integrated Goose Management Plan (Plan) to

ensure that careful, precise non-lethal management actions are implemented to manage the onsite Canada Goose and Mallard overpopulations. The Plan will identify successful management methods in use in the Bay Area and other locations where Canada Goose and Mallard are a problem, including qualification for a "Depredation Order" and permit from the USFWS to implement legal management activities to control overpopulations of Canada Goose and separately, a Mallard Depredation Order, while still protecting other migratory bird species such as rare, non-resident, non-breeding "winter" season look-alike "Canada goose" subspecies such as Small Cackling Goose (*Branta hutchinsii minima*), and Aleutian Cackling Goose (*Branta hutchinsii leucopaeria*). The Plan will contain a section devoted to "success criteria" and milestones anticipated at Central Park. The criteria will allow City personnel (including technicians/biologists) to monitor conditions at Central Park to ensure the ongoing implementation and success of the management actions.

The Parks & Recreation Commission will review the background and history of the Canada Goose and Mallards and their negative impact on Central Park and patrons. The Commission will also review the components of an IGM Plan and consider recommending approval to Council for the implementation of the Plan.

ENVIRONMENTAL REVIEW

The action being considered does not constitute a "project" within the meaning of the California Environmental Quality Act ("CEQA") pursuant to CEQA Guidelines section 15378(b)(5) in that it is a governmental organizational or administrative activity that will not result in direct or indirect changes in the environment. On the federal level, the action complies with federal regulator code under a valid U.S. Fish and Wildlife (USFWS) permit secured by avian biologist Daniel Edelstein and updated annually by the avian biologist. This USFWS code regulation is 50 CFR 21.52, pertaining to the allowance of non-lethal overpopulation management actions (including adding of Canada Goose eggs) for this year-round bird species present at the Central Park Lake.

FISCAL IMPACT

Current park grounds maintenance activities are included in the Parks & Recreation Department's annual operating budget.

PUBLIC CONTACT

Public contact was made by posting the Parks & Recreation Commission's agenda on the City's official-notice bulletin board outside City Hall Council Chambers. A complete agenda packet is available on the City's website and in the City Clerk's Office at least 72 hours prior to a Regular Meeting and 24 hours prior to a Special Meeting. A hard copy of any agenda report may be requested by contacting the City Clerk's Office at (408) 615-2220, e-mail clerk@santaclaraca.gov or at the public information desk at any City of Santa Clara public library

RECOMMENDATION

Recommend Council approval of an Integrated Goose Management Plan for Central Park.

Reviewed by: Dale Seale, Deputy Parks & Recreation Director

Approved by: James Teixeira, Director of Parks & Recreation

ATTACHMENTS

1. Integrated Goose Management Plan Presentation



Parks & Recreation Commission

Central Park Integrated Goose Management Plan

November 17, 2020



Presentation Outline

- Central Park Lake
- Work Plans and Improvement Projects 2014-2020
- Canada Goose and Mallard Overpopulation
- Impact of Goose Dropping on Lake and Pathways
- Daniel Edelstein, Avian Biologist
- Proposed Integrated Goose Management Plan (IGMP)



Central Park Lake

Iconic Feature of Central Park

- 1 Million gallons reclaimed water
- Aesthetic focal point in park
- Community Wide Special Event Location
 - Art & Wine Festival, July 4th, SVBBQ, etc.
- Place for family & community recreation





Work Plans and Improvements 2014-2020

- Prior to 2014
 - Annual Lake cleanup
 - Limited short-term water quality improvement
- 2014 Biofiltration CIP Project
 - Improved lake water quality
 - Improved the aesthetics of the lake area
- Lake Cleanup every five years
- Bi-annual treatment to reduce algae blooms





Central Park Pond Bio-filtration



Using Wetland Plants to Clean the Pond

How is the pond water cleaned? Pond water is cleaned when water flows from the surface skimmers in the lower pond into bio-filtration cells filled with rounded stones. Microorganisms form a biotic zone around each stone, and serve to process the pond water that flows around them.

The pond water entering the cells typically has a high level of suspended solids and nutrients primarily generated by resident mallards and Canada geese. In addition, the remaining nutrients are absorbed by the wetland plants that cover the surface of the entire wetland.

After the pond water passes through the cells and the roots of the wetland plants, it flows to the upper pond and then down the waterfall to the lower pond thereby completing the cycle.



Canna x generalis 'Pretoria'
Bengal Tiger Canna



Thalia dealbata
Alligator Flag



Bacopa monnieri
Water Hyssop



Sagittaria latifolia
Broadleaf Arrowhead



City of Santa Clara Water & Sewer Utilities and Parks & Recreation Department



**City of
Santa Clara**
The Center of What's Possible

Impact of Goose Dropping on Lake and Pathways





Canada Goose & Mallard Overpopulation

Negative Impact on Central Park & Lake

- Reduced habitat for native species
- Decreased water quality of lake
- Increased “Dirty Pathways”
- Potential disease transmission to other species
- Reduced recreational enjoyment





How to Address the Issue?

- Agreement with an Avian Biologist
- Develop an Integrated Goose Management Plan (IGMP)
- Present IGMP to the Parks & Recreation Commission
- Present IGMP to Council for Approval
- Implement IGMP's Management Action Steps
 - Short-Term
 - Long-Term



Daniel Edelstein, Avian Biologist

- **Certified Wildlife Biologist**
 - 25+ years field survey experience
 - 16 Years of Regulatory/Permitting Knowledge
- **Community College Birding/Wildlife Instructor**
- **Birding Guide since 1986**
- **Authored over 100 regulatory compliance documents**



**City of
Santa Clara**
The Center of What's Possible

Moffitt's Canada Goose (*Branta canadensis moffitti*)



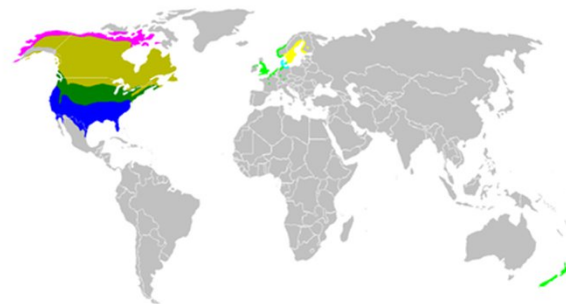


Moffitt's Canada Goose

(*Branta canadensis moffitti*)

Large body 30-43", big bill, often in large groups; this species nests in late winter &/or spring, with baby geese typically hatching at the lake from May – June annually.

Nesters joined by nearby geese geese families join together as large groups after the breeding season, thereby causing an overpopulation at the lake and surrounding lawn areas in the park and nearby.





**City of
Santa Clara**
The Center of What's Possible





**City of
Santa Clara**
The Center of What's Possible





**City of
Santa Clara**
The Center of What's Possible





**City of
Santa Clara**
The Center of What's Possible





Problems Associated with the Growing Number of Geese

- **“Dirty” pathways**
- **Increased maintenance time and cost with same daily result**
- **Park patrons deserve a clean and “less-odiferous” outdoor experience**
- **Poor water quality in the Lake (each adult goose drops ~1/2 lb feces per day)**
- **Decreased habitat quality for other wildlife species that compete at the lake for**
 - **Roosting sites**
 - **Foraging resources**
 - **Nesting areas**
- **Potential avian disease spread to other bird species**
- **Reduced biological diversity as the large, naturally-aggressive geese out-compete dozens of other bird species for food and nesting areas**
 - **geese always prevail**



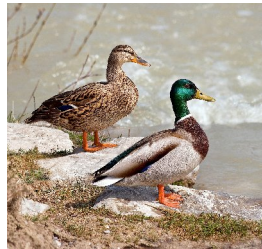
**City of
Santa Clara**
The Center of What's Possible



(Branta hutchinsii leucopareia)



**City of
Santa Clara**
The Center of What's Possible



CENTRAL PARK CANADA GOOSE & MALLARD SURVEYS (2020)

Date Of Survey	Number of Canada Goose Counted	Newborn Goose Seen?	Number of Mallard Observed
7/7/20	88	No	59
8/13/20	95	No	71
9/30/20	80	No	64
10/22/20	158	No	87



Integrated Goose Management Plan

SHORT-TERM SOLUTION STRATEGIES:

The following management goals and actions in the IGM are short and long-term strategies to gradually reduce the overpopulation of geese at Central Park Lake and its surrounding areas.

GOAL #1: Educate The Public About The Need To Reduce Geese Overpopulation

- **ACTIONS TO SATISFY GOAL:**
 - Advise visitors to stop feeding geese (and Mallard ducks) at the lake
 - Add friendly, educational information signs at the park benches where people often feed the geese (and Mallard ducks)
 - Add information signage at access trail places where visitors enter the park



Informational Signs





SHORT-TERM SOLUTION STRATEGIES:

GOAL #2: Prevent geese from walking into the lake.

- **ACTION TO SATISFY GOAL:**
 - Add fencing to the lake's entire perimeter
 - Result: Geese will not have walk in access to lake

(Branta hutchinsii leucopareia)



**City of
Santa Clara**
The Center of What's Possible

Functional Fencing





**City of
Santa Clara**
The Center of What's Possible

Usage of Functional Fencing





Integrated Goose Management Plan Implementation

SHORT-TERM SOLUTION STRATEGIES:

GOAL #3: Reduce Success Of Geese Breeding At The Lake:

- **ACTION TO SATISFY GOAL:**
- **Begin the Following Non-lethal Management Action:**
 - **Addling Geese Eggs Prevents Hatching,**
 - **No Newborn Geese Occur at the Lake**



**City of
Santa Clara**
The Center of What's Possible

Addling of Geese Eggs







Integrated Goose Management Plan Implementation

SHORT-TERM SOLUTION STRATEGIES:

GOAL #4: Educate the public about the need to reduce geese overpopulation

- ACTION TO SATISFY GOAL:
 - Inform Santa Clara residents, park visitors, wider community about the need to reduce the goose overpopulation problem
 - Ensure public has a “voice” and is informed
 - Allowing public input/comments via:
 - Educational public meeting (remote “Zoom” or in person)
 - City’s website
 - News release about the goose overpopulation problem



Public Community Outreach



- Parks & Recreation Commission
- Virtual Meeting(s)
- Community Site Visit(s)
- City Council Meeting





**City of
Santa Clara**
The Center of What's Possible





Integrated Goose Management Plan Implementation

SHORT-TERM SOLUTION STRATEGIES:

GOAL #4 (continued): Educate the public about the need to reduce geese overpopulation

- ACTION TO SATISFY GOAL:
- Inform Santa Clara community members about the need to reduce the goose overpopulation problem via:
 - articles for public to read local print/online media
 - Request Resolution from Santa Clara Audubon Society
 - Continue to ensure public has a “voice” and is informed
 - Public scoping/educational meetings (via Zoom or in person)
 - Add public notice on the City’s website, so comments may be submitted



Integrated Goose Management Plan Implementation

LONG-TERM SOLUTION STRATEGIES

GOAL 1: Reduce the nesting success and presence of geese at the lake

- ACTIONS TO SATISFY GOAL:
- Implement one or more of the management strategies highlighted in the IGM:
 - Continue ongoing, annual goose addling to prevent egg hatching = few to no newborn geese born at lake area



Integrated Goose Management Plan Implementation

LONG-TERM SOLUTION STRATEGIES (cont'd)

GOAL 2: Reduce the nesting success and presence of geese at the lake

- ACTIONS TO SATISFY GOAL:
- Modify the lake's habitat to reduce goose immigration presence AND to encourage geese to leave the lake area via:
 - Implement habitat modifications, such as:
 - A) Fencing addition around the Lake
 - B) Vegetation Plantings:
 - 1) Around the lake
 - 2) On the Island (to reduce nesting success)



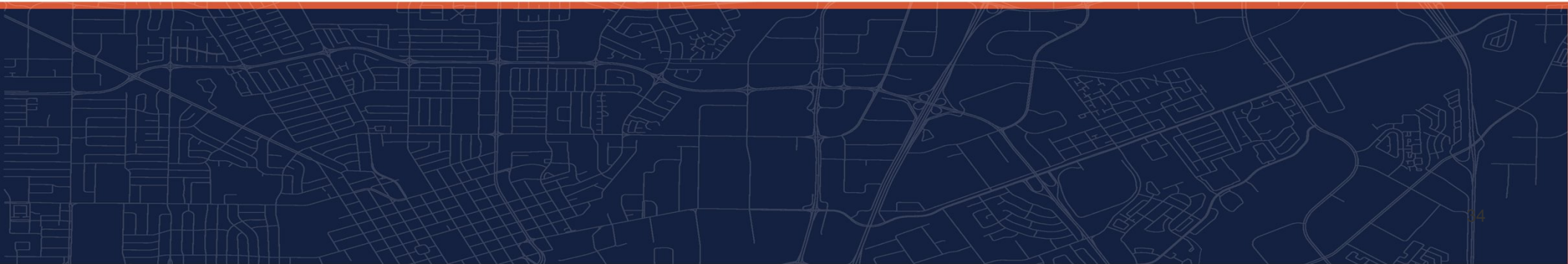
Community & Commission Input

- **Commission Questions**
- **Community Input**
- **Commission Discussion**
- **Commission Recommendation**



City of Santa Clara

The Center of What's Possible





Agenda Report

20-1079

Agenda Date: 11/17/2020

REPORT TO PARKS & RECREATION COMMISSION

SUBJECT

Recommend Eligibility Criteria for the Community Garden Program at the Mini Park Located at 3450 Copper Place

BACKGROUND

One of the City Council Pillars since 2014 has been “to enhance community sports, recreation and arts assets. In 2018, the City dedicated its first community garden at the Everett N. “Eddie” Souza Park & Community Garden. The review of new parks and programs is within the purview of the Parks & Recreation Commission. The Parks & Recreation Commission recommended priorities for the Souza Community Garden program that included criteria for eligibility, and rules for access and use. The Everett N. “Eddie” Souza Community Garden eligibility prioritized City of Santa Clara residents (residency), persons living within ½ mile of the garden (geographic proximity), persons with low income or on public assistance (income), and youth & seniors (age).

On October 17, 2017, the Commission reviewed and recommended City Council approval of the schematic design for the SummerHill-Lawrence Station Area Public Parkland (Attachment 1). The parkland consists of eight (8) mini parks including the community garden in Mini Park G, located at 3450 Copper Place (Attachment 2). In 2019, the Department began an interest list for the new community garden that was featured in the Activity Guide and on the Department’s program registration system. The community garden is projected to open in fall 2021.

The community garden has 26 raised garden beds, container garden display beds, picnic benches, a shared storage shed, compost area, five specimen fruit trees, and community blueberry bushes. Funds generated by the Community Facilities District 2019-1 (Lawrence Station) (CFD) for the Lawrence Station Area Public Parkland will contribute to the maintenance costs of parks, and eligible costs of community garden maintenance.

DISCUSSION

Given that the public garden is within a CFD, and there is a finite number of garden beds available, staff proposes eligibility criteria based on geographic proximity, income, age, and residency in the following order:

1. Santa Clara residents living within the Community Facilities District No. 2019-1 (Lawrence Station) boundaries (Attachment 3)
2. Santa Clara residents who are Low Income
3. Santa Clara residents 55 years and older, and/or families with children
4. Other City of Santa Clara residents

Staff developed the above proposed eligibility and priorities based on the CFD and program experience at the Everett N. “Eddie” Souza Community Garden.

Following the adoption of eligibility criteria and program rules of use, staff will advertise and hold a lottery among eligible residents to be assigned a garden bed, complete a rental agreement, and be a Community Garden Member for up to three years. The Community Garden will have a minor, annual program participant fee and renew their membership annually (twice). A designated recreation coordinator will supervise the program and waitlist, conduct gardener orientations, garden member meetings, garden training and workshop opportunities that may be offered in conjunction with the Eddie Souza Community Garden Program.

ENVIRONMENTAL REVIEW

The action being considered does not constitute a “project” within the meaning of the California Environmental Quality Act (“CEQA”) pursuant to CEQA Guidelines section 15378(b)(5) in that it is a governmental organizational or administrative activity that will not result in direct or indirect changes in the environment.

PUBLIC CONTACT

Public contact was made by posting the Parks & Recreation Commission agenda on the City’s official-notice bulletin board outside City Hall Council Chambers. A complete agenda packet is available on the City’s website and in the City Clerk’s Office at least 72 hours prior to a Regular Meeting and 24 hours prior to a Special Meeting. A hard copy of any agenda report may be requested by contacting the City Clerk’s Office at (408) 615-2220, email clerk@santaclaraca.gov or at the public information desk at any City of Santa Clara public library.

ALTERNATIVES

1. Recommend approval of community garden eligibility criteria in the order presented in the report.
2. Recommend approval of community garden eligibility criteria in a different priority order.

RECOMMENDATION

Recommend community garden eligibility criteria (geographic proximity, income, age, and residency) in the following priority order: (1) Santa Clara residents living within the Community Facilities District No. 2019-1 (Lawrence Station) boundaries, (2) Santa Clara residents who are Low Income, (3) Santa Clara residents 55 years and older, and/or families with children under age 18, (4) Other City of Santa Clara residents.

Prepared by: Kimberly Castro, Recreation Manager

Approved by: James Teixeira, Director of Parks & Recreation

ATTACHMENTS

1. Parks & Recreation Commission Minutes October 17, 2017
2. Mini Park G Community Garden Site Plan
3. Boundaries of the Community Facilities District No. 2019-1 (Lawrence Station)

12-5-2017

13.E3



**City of
Santa Clara**
The Center of What's Possible

PARKS & RECREATION COMMISSION

Cafeteria
1500 Warburton Avenue
Santa Clara, CA

Meeting Minutes October 17, 2017

Organization	Name
City of Santa Clara	Commissioner Chuck Blair Commissioner George Guerra Commissioner Andrew Knaack Commissioner Roseann Alderete LaCoursiere Commissioner Joe Martinez Commissioner Tino Silva Commissioner Kevan Michael Walke Director of Parks & Recreation, James Teixeira Deputy Parks & Recreation Director, Dale Seale Recreation Manager, Kim Castro

Matters for Council Action:

- 1) The Commission recommended (6-0-1) that Council approve the schematic design for the Summerhill-Lawrence Station Area Public Parkland with a recommendation to require Park G Off Leash Dog Area have a flat surface with K9 Turf and that Park E natural grass have synthetic turf. *(Note: Parks & Recreation staff has maintenance, operations and cost concerns related to Park E synthetic turf.)*
 - 2) The Commission recommended (6-0-1) that Council approve the distribution of \$89,000 of net proceeds from the 37th annual Santa Clara Art & Wine Festival to local programs and services as follows: Santa Clara Friends of Parks & Recreation Department (\$16,000), Santa Clara Schools Foundation (\$16,000), Santa Clara Senior Center Health & Wellness Program (\$15,000), Santa Clara Police Activities League (\$14,000), Santa Clara High School Grad Night (\$8,000), Wilcox High School Grad Night (aka Senior Send Off) (\$8000), Rotary Club of Santa Clara (\$6,000), and Wade Brummal Youth Sports Grant Program (\$6,000). Recommendation sent to City Council as a Special Order of Business—Presentation of Funds to Local Charities from the 2017 Santa Clara Art & Wine Festival Proceeds. *(Note: This item was on November 7, 2017 Council Agenda).*
-
1. Call to Order/Roll Call/Order of Agenda: The meeting was called to order by Chair LaCoursiere at 7:02 p.m. The Commission excused Commissioner Walke on a motion by Commissioner Silva and seconded by Commissioner Martinez (6-0-1).
 2. Approval of Minutes: On a motion by Commissioner Silva and seconded by Commissioner Martinez, the Commission approved the September minutes (6-0-1).
 3. Correspondence & Communications: Recreation Manager Castro reviewed correspondence and communications with the Commission.

4. New Business:

- A. Presentation and Review for Recommendation: Summerhill-Lawrence Station Area Public Parkland. The Commission reviewed the presentation on the Summerhill-Lawrence Station Area Public Parkland. On a motion by Commissioner Guerra and seconded by Commissioner Blair, the Commission recommended (6-0-1) that City Council approve the schematic design for the Summerhill-Lawrence Station Area Public Parkland with the requirement that Park E must be synthetic turf and that flat surface K9 Turf be installed in Park G. *(Note: Mini Park E (Lot N) has a below grade water treatment silva cell approximately 260 feet long by 40 feet wide, (34% of Mini Park E) and developer proposed natural grass. While, the Community Facilities District (CFD) formed for this development will contribute towards public park maintenance costs, the Parks & Recreation Department recommends natural turf be installed at this location due to maintenance, use/operations and cost concerns related to Park E synthetic turf.)*
- B. Art & Wine Festival 2017 Commission Grant Recommendation. On a motion by Commissioner Knaack and seconded by Commissioner Guerra, the Commission recommended (6-0-1) that City Council approve the distribution of \$89,000 of net proceeds from the 37th annual Santa Clara Art & Wine Festival to local programs and services as follows: Santa Clara Friends of Parks & Recreation Department (\$16,000), Santa Clara Schools Foundation (\$16,000), Santa Clara Senior Center Health & Wellness Program (\$15,000), Santa Clara Police Activities League (\$14,000), Santa Clara High School Grad Night (\$8,000), Wilcox High School Grad Night (aka Senior Send Off) (\$8,000), Rotary Club of Santa Clara (\$6,000), and Wade Brummel Youth Sports Grant Program (\$6,000). Recommendation sent to City Council as a Special Order of Business—Presentation of Funds to Local Charities from the 2017 Santa Clara Art & Wine Festival Proceeds.
- C. Presentation: Neighborhood Park Playground Project Community Outreach Plan. Recreation Manager Castro reviewed the format, purpose and location for each community outreach meeting inclusive of Homeridge Park, Montague Park, Bowers Park, Machado Park, Fuller Street Park, Agnew Park and the Central Park Master Plan Update.
- D. Discuss including Handball Courts at Neighborhood Parks. On a motion by Commissioner Guerra and seconded by Commissioner Blair the Commission agreed (4-2-1) to further discuss handball courts at neighborhood parks, considering potential costs, at a future meeting.

The following members of the public spoke in favor of having handball courts in the City of Santa Clara: Matt Sullivan, Joe Lenhardt and Arthur Vences.

The following members of the public spoke to move the handball courts to a City of Santa Clara park location: Craig Connelly, Monica Stoffal and Amy Gurich.

- E. Discuss Holiday Tree Lighting Special Event
1. Nominate 2017 "Honorary Tree Lighter." On a motion by Commissioner Guerra, and seconded by Commissioner Silva the Commission recommended consideration of George Santich as the Tree Lighter for the Tree Lighting Ceremony.

2. Discuss Beer & Wine Booth. The commission will serve Golden State Beer and wines from Bargetto, Fortino and Guglielmo at the Tree Lighting event. All beverages will be sold for \$5 with a glass.

- F. Recommend Approval of \$1,000 Grant For SC Host Lions Spring and Summer Football and Cheer Program. On a motion by Commissioner Silva and seconded by Commissioner Guerra, the Commission recommends that City Council approve a \$1,000 Grant for SC Host Lions Spring and Summer Football and Cheer Program.

5. Old Business:

A. Commission 2017 Work Plan & Goals

1. Complete Facility Condition Assessment and Develop Project and Funding Priorities for Park Acquisition, Development & Rehabilitation (Commission Update). The Facilities Condition Assessment is proceeding with over 40 buildings and park sites in draft format that is currently being reviewed by the Department.
2. Review and Update Park Rules, Regulations, Ordinance(s) and Park Signs (Commission Review & Discussion). Deputy Director Seale provided the Commission with a sample sign for Tennis Court Rules.
3. Parks & Athletic Fields—Improve Access, Supervision & Enforcement (commission Update). None.
4. Enhance Special Events—Local Focus, Activities & Cultural Commission Collaboration.

6. Staff Reports:

- A. Park Division & Cemetery Updates: Deputy Director Seale reviewed upcoming projects with the Commission that included preparation for the ice rink, lawn bowl natural turf maintenance renovation, overhead shelter for bleachers at the Central Park Tennis Center and the completion of the two ramp repairs at Ulistac Natural Area.
- B. Recreation Division Updates: Covered in Item 4C above, Jack and Beanstalk opens October 27 and planning for winter mini special events to promote the ice rink.
- C. Special Events Updates: The Children's Halloween Party at the Youth Activity Center is scheduled for Tuesday, October 31, 2017 from 3-6 p.m.

7. Commissioner Reports:

- A. Commissioner Blair: Visited Henry Schmidt Park.
- B. Commissioner Knaack: Is currently participating in a recreational basketball league at Buchser Middle School.
- C. Commissioner LaCoursiere: Visited Steve Carli Park with family and observed the amount of play elements in the playground that kids are actively using.
- D. Commissioner Martinez: Visited Steve Carli Park and Fremont Park.


8. Conference & Attendance Reports: None.

9. Public Presentations: Ray Gamma commented on the need for synthetic dog turf at the proposed new dog park in the Summerhill-Lawrence Station Area Public Parkland.
10. Adjournment: On a motion by Commissioner Guerra and second by Commissioner Silva to cancel (6-0-1) the December meeting. On a motion by Commissioner Guerra and second by Commissioner Martinez, the meeting was adjourned (6-0-1) at 9:30 p.m.


Prepared by:


Dale Seale
Deputy Director of Parks & Recreation

Reviewed by:

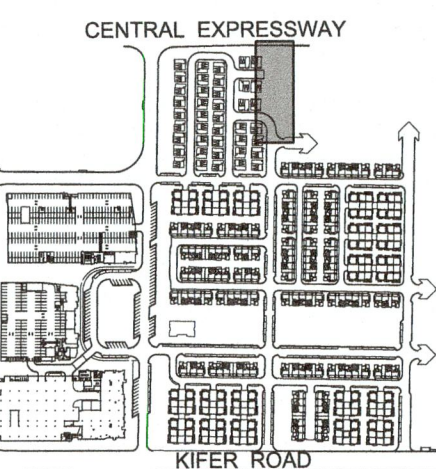

Andrew Knaack
Commission Secretary

Submitted by:


James Teixeira
Director of Parks & Recreation
Commission Liaison

Lawrence Assembledge
Landscape Improvement Plans for:
Tract No. 10400
Public Parks - Phase I
Santa Clara, California

REVISIONS/SUBMITTALS	BY
FIRST CITY SUBMITTAL	04-05-18 LT
SECOND CITY SUBMITTAL	08-24-18 LT
THIRD CITY SUBMITTAL	03-15-19 LT
FOURTH CITY SUBMITTAL	04-26-19 LT
FIFTH CITY SUBMITTAL	10-16-19 LT
△ PARK F PERGOLA REVS.	12-17-19 LT
△ PARK E REVS.	12-18-19 LT
△ PARK D & G REVISIONS	1-28-20 LT



KEY MAP N.T.S.

COPYRIGHT ©
R3 STUDIOS INC.
ALL DRAWINGS AND WRITTEN MATERIALS APPEARING
HEREIN CONSTITUTE THE ORIGINAL AND UNPUBLISHED
WORK OF THE LANDSCAPE ARCHITECT AND MAY NOT
BE COPIED OR USED WITHOUT THE WRITTEN CONSENT
OF THE LANDSCAPE ARCHITECT.

DATE: 1/28/2020
DESIGN BY: RD
DRAWN BY: LT
CHECKED BY: RD

SHEET DESCRIPTION:

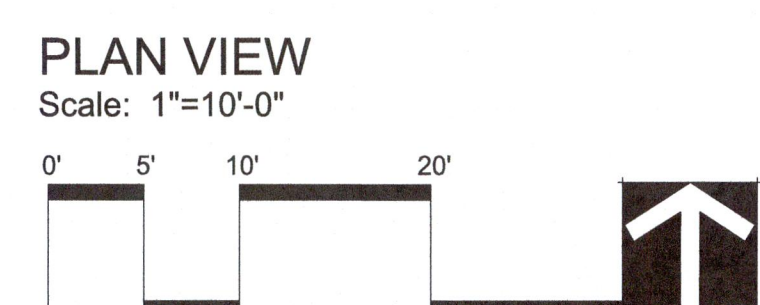
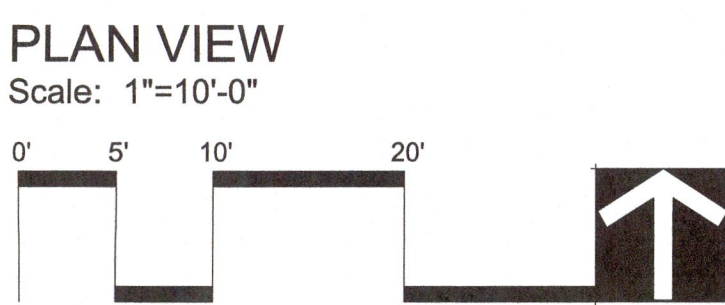
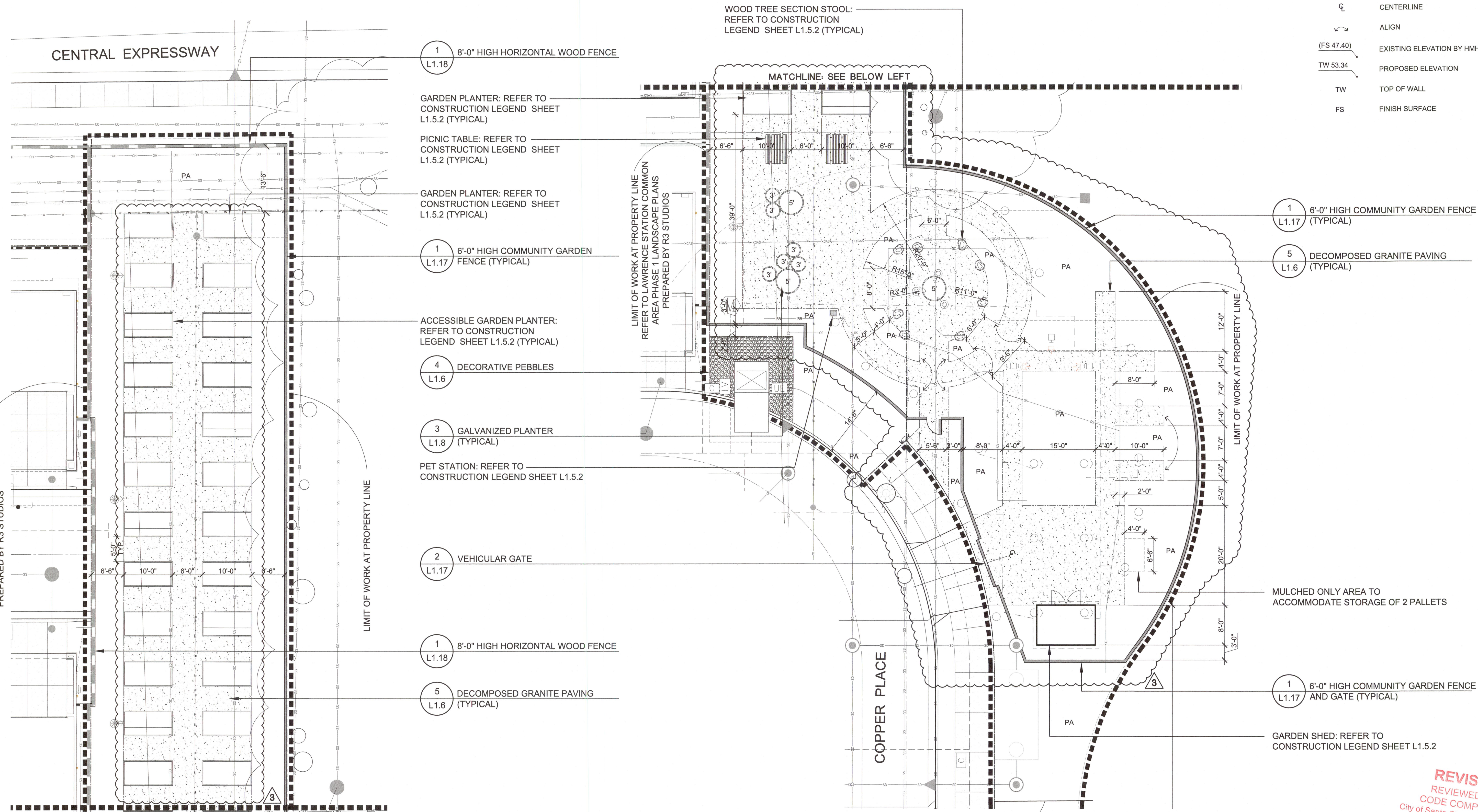
Construction Plan
(Mini Park 'G')

PROJECT NUMBER: 300-95
SHEET NUMBER:

L1.5.1

SYMBOL LEGEND

F.O.B.	FACE OF BUILDING
F.O.C.	FACE OF CURB
B.O.W.	BACK OF WALK
PA	PLANTING AREA
CL	CENTERLINE
ALIGN	ALIGN
(FS 47.40)	EXISTING ELEVATION BY HMH
TW 53.34	PROPOSED ELEVATION
TW	TOP OF WALL
FS	FINISH SURFACE



CONSTRUCTION NOTES

FOR LOCATION AND DIMENSION OF SIDEWALKS,
ELEVATION OF WALKWAYS, FINISH SURFACE
ELEVATIONS, FINISH GRADE ELEVATIONS, SLOPE
DRAINAGE DIRECTION, INVERT ELEVATIONS, RIM
ELEVATIONS, DRAINLINES, AND DRAIN INLET
LOCATIONS REFER TO IMPROVEMENT PLANS
PREPARED BY HMH

CONSTRUCTION & UTILITY LEGEND: REFER TO SHEET L1.5.2

Proposed Boundaries of
City of Santa Clara
Community Facilities District No.
2019-1 (Lawrence Station),
County of Santa Clara, California

Zone No. 2

Future Annexation Area

LAWRENCE EXPRESSWAY

RYDER STREET

CALABAZAS CREEK

KIFER ROAD

Reference is hereby made to the Assessor maps of the County of Santa Clara for a description of the lines and dimensions of these parcels.



Agenda Report

20-1081

Agenda Date: 11/17/2020

REPORT TO PARKS & RECREATION COMMISSION

SUBJECT

Recommend Approval of Proposed Community Garden Guiding Principles & Rules for the Mini Park Located at 3450 Copper Road

BACKGROUND

On October 17, 2017, the Commission reviewed and recommended City Council approval of the schematic design for the SummerHill-Lawrence Station Area Public Parkland (Attachment 1) including a community garden at Mini Park parcel G, located at 3450 Copper Road (Attachment 2). Currently under construction, and projected to open in late 2021, the community garden will have 26 raised garden beds, container garden display beds, picnic benches, a shared 8'x12' shed, compost area, fruit trees, and blueberry bushes.

The Community Garden Program is a City (public) recreation program. The Guiding Principles established for the Community Garden Program support and promote safe garden practices, garden aesthetics, equity, environmental stewardship, and create a community of gardening neighbors. While Guiding Principles apply to the Program as a whole, Garden Rules are site specific due to the differences in each community garden background, development, size, shape, locations, land use restrictions (such as CC&R's or), as well as specific adjacent neighborhood issues and concerns.

Previously, the Commission reviewed and approved community garden Guiding Principles in association with the City's first community garden located at Everett N. "Eddie" Souza Park & Community Garden. The Guiding Principles were developed based on research based best practices for the sustainable operation and management of the community garden. These principles communicate the City's expectations of community garden members and participation in the Community Garden Program. The Guiding Principles are reviewed periodically, consider community garden member input, and are updated to reflect current research based best practices.

Generally, the Community Garden Guiding Principles & Rules will provide:

1. Background information on the Community Garden Program
2. Roles and Responsibilities for City staff, Garden members, and guests
3. Code of Conduct
4. Garden hours of operation, maintenance practices, amenities, and shared use and non-shared use areas/equipment
5. Gardening Rules
 - a. Description of garden beds
 - b. Organic gardening policy
 - c. Garden-bed specific gardening guidelines
 - d. List of prohibited and allowed pest control products and fertilizers
 - e. Waterwise Gardening resources

DISCUSSION

The proposed Community Garden Guiding Principles 2020 (Attachment 3) is based on experience at the Everett N. "Eddie" Souza community garden and on best practices for the sustainable operations and management of the community garden. The City will manage the Community Garden Program. A designated Recreation Coordinator will supervise the program and waitlist, conduct orientation, garden member meetings, training and workshops in conjunction with the Everett N. "Eddie" Souza Community Garden.

ENVIRONMENTAL REVIEW

The action being considered does not constitute a "project" within the meaning of the California Environmental Quality Act ("CEQA") pursuant to CEQA Guidelines section 15378(b)(5) in that it is a governmental organizational or administrative activity that will not result in direct or indirect changes in the environment.

PUBLIC CONTACT

Public contact was made by posting the Parks & Recreation Commission agenda on the City's official-notice bulletin board outside City Hall Council Chambers. A complete agenda packet is available on the City's website and in the City Clerk's Office at least 72 hours prior to a Regular Meeting and 24 hours prior to a Special Meeting. A hard copy of any agenda report may be requested by contacting the City Clerk's Office at (408) 615-2220, email clerk@santaclaraca.gov or at the public information desk at any City of Santa Clara public library.

RECOMMENDATION

Recommend that Council approve the Community Garden Guiding Principles & Rules for the Mini Park Located at 3450 Copper Road.

Prepared by: Kimberly Castro, Recreation Manager

Approved by: James Teixeira, Director of Parks & Recreation

ATTACHMENTS

1. Parks & Recreation Commission Meeting Minutes October 17, 2017
2. Mini Park G Community Garden Site Plans
3. Community Garden Guiding Principles & Rules 2020

12-5-2017

13.E3



**City of
Santa Clara**
The Center of What's Possible

PARKS & RECREATION COMMISSION

Cafeteria
1500 Warburton Avenue
Santa Clara, CA

Meeting Minutes October 17, 2017

Organization	Name
City of Santa Clara	Commissioner Chuck Blair Commissioner George Guerra Commissioner Andrew Knaack Commissioner Roseann Alderete LaCoursiere Commissioner Joe Martinez Commissioner Tino Silva Commissioner Kevan Michael Walke Director of Parks & Recreation, James Teixeira Deputy Parks & Recreation Director, Dale Seale Recreation Manager, Kim Castro

Matters for Council Action:

- 1) The Commission recommended (6-0-1) that Council approve the schematic design for the Summerhill-Lawrence Station Area Public Parkland with a recommendation to require Park G Off Leash Dog Area have a flat surface with K9 Turf and that Park E natural grass have synthetic turf. *(Note: Parks & Recreation staff has maintenance, operations and cost concerns related to Park E synthetic turf.)*
 - 2) The Commission recommended (6-0-1) that Council approve the distribution of \$89,000 of net proceeds from the 37th annual Santa Clara Art & Wine Festival to local programs and services as follows: Santa Clara Friends of Parks & Recreation Department (\$16,000), Santa Clara Schools Foundation (\$16,000), Santa Clara Senior Center Health & Wellness Program (\$15,000), Santa Clara Police Activities League (\$14,000), Santa Clara High School Grad Night (\$8,000), Wilcox High School Grad Night (aka Senior Send Off) (\$8000), Rotary Club of Santa Clara (\$6,000), and Wade Brummal Youth Sports Grant Program (\$6,000). Recommendation sent to City Council as a Special Order of Business—Presentation of Funds to Local Charities from the 2017 Santa Clara Art & Wine Festival Proceeds. *(Note: This item was on November 7, 2017 Council Agenda).*
-
1. Call to Order/Roll Call/Order of Agenda: The meeting was called to order by Chair LaCoursiere at 7:02 p.m. The Commission excused Commissioner Walke on a motion by Commissioner Silva and seconded by Commissioner Martinez (6-0-1).
 2. Approval of Minutes: On a motion by Commissioner Silva and seconded by Commissioner Martinez, the Commission approved the September minutes (6-0-1).
 3. Correspondence & Communications: Recreation Manager Castro reviewed correspondence and communications with the Commission.

4. New Business:

- A. Presentation and Review for Recommendation: Summerhill-Lawrence Station Area Public Parkland. The Commission reviewed the presentation on the Summerhill-Lawrence Station Area Public Parkland. On a motion by Commissioner Guerra and seconded by Commissioner Blair, the Commission recommended (6-0-1) that City Council approve the schematic design for the Summerhill-Lawrence Station Area Public Parkland with the requirement that Park E must be synthetic turf and that flat surface K9 Turf be installed in Park G. *(Note: Mini Park E (Lot N) has a below grade water treatment silva cell approximately 260 feet long by 40 feet wide, (34% of Mini Park E) and developer proposed natural grass. While, the Community Facilities District (CFD) formed for this development will contribute towards public park maintenance costs, the Parks & Recreation Department recommends natural turf be installed at this location due to maintenance, use/operations and cost concerns related to Park E synthetic turf.)*
- B. Art & Wine Festival 2017 Commission Grant Recommendation. On a motion by Commissioner Knaack and seconded by Commissioner Guerra, the Commission recommended (6-0-1) that City Council approve the distribution of \$89,000 of net proceeds from the 37th annual Santa Clara Art & Wine Festival to local programs and services as follows: Santa Clara Friends of Parks & Recreation Department (\$16,000), Santa Clara Schools Foundation (\$16,000), Santa Clara Senior Center Health & Wellness Program (\$15,000), Santa Clara Police Activities League (\$14,000), Santa Clara High School Grad Night (\$8,000), Wilcox High School Grad Night (aka Senior Send Off) (\$8,000), Rotary Club of Santa Clara (\$6,000), and Wade Brummel Youth Sports Grant Program (\$6,000). Recommendation sent to City Council as a Special Order of Business—Presentation of Funds to Local Charities from the 2017 Santa Clara Art & Wine Festival Proceeds.
- C. Presentation: Neighborhood Park Playground Project Community Outreach Plan. Recreation Manager Castro reviewed the format, purpose and location for each community outreach meeting inclusive of Homeridge Park, Montague Park, Bowers Park, Machado Park, Fuller Street Park, Agnew Park and the Central Park Master Plan Update.
- D. Discuss including Handball Courts at Neighborhood Parks. On a motion by Commissioner Guerra and seconded by Commissioner Blair the Commission agreed (4-2-1) to further discuss handball courts at neighborhood parks, considering potential costs, at a future meeting.

The following members of the public spoke in favor of having handball courts in the City of Santa Clara: Matt Sullivan, Joe Lenhardt and Arthur Vences.

The following members of the public spoke to move the handball courts to a City of Santa Clara park location: Craig Connelly, Monica Stoffal and Amy Gurich.

- E. Discuss Holiday Tree Lighting Special Event
1. Nominate 2017 "Honorary Tree Lighter." On a motion by Commissioner Guerra, and seconded by Commissioner Silva the Commission recommended consideration of George Santich as the Tree Lighter for the Tree Lighting Ceremony.

2. Discuss Beer & Wine Booth. The commission will serve Golden State Beer and wines from Bargetto, Fortino and Guglielmo at the Tree Lighting event. All beverages will be sold for \$5 with a glass.

- F. Recommend Approval of \$1,000 Grant For SC Host Lions Spring and Summer Football and Cheer Program. On a motion by Commissioner Silva and seconded by Commissioner Guerra, the Commission recommends that City Council approve a \$1,000 Grant for SC Host Lions Spring and Summer Football and Cheer Program.

5. Old Business:

A. Commission 2017 Work Plan & Goals

1. Complete Facility Condition Assessment and Develop Project and Funding Priorities for Park Acquisition, Development & Rehabilitation (Commission Update). The Facilities Condition Assessment is proceeding with over 40 buildings and park sites in draft format that is currently being reviewed by the Department.
2. Review and Update Park Rules, Regulations, Ordinance(s) and Park Signs (Commission Review & Discussion). Deputy Director Seale provided the Commission with a sample sign for Tennis Court Rules.
3. Parks & Athletic Fields—Improve Access, Supervision & Enforcement (commission Update). None.
4. Enhance Special Events—Local Focus, Activities & Cultural Commission Collaboration.

6. Staff Reports:

- A. Park Division & Cemetery Updates: Deputy Director Seale reviewed upcoming projects with the Commission that included preparation for the ice rink, lawn bowl natural turf maintenance renovation, overhead shelter for bleachers at the Central Park Tennis Center and the completion of the two ramp repairs at Ulistac Natural Area.
- B. Recreation Division Updates: Covered in Item 4C above, Jack and Beanstalk opens October 27 and planning for winter mini special events to promote the ice rink.
- C. Special Events Updates: The Children's Halloween Party at the Youth Activity Center is scheduled for Tuesday, October 31, 2017 from 3-6 p.m.

7. Commissioner Reports:

- A. Commissioner Blair: Visited Henry Schmidt Park.
- B. Commissioner Knaack: Is currently participating in a recreational basketball league at Buchser Middle School.
- C. Commissioner LaCoursiere: Visited Steve Carli Park with family and observed the amount of play elements in the playground that kids are actively using.
- D. Commissioner Martinez: Visited Steve Carli Park and Fremont Park.


8. Conference & Attendance Reports: None.

9. Public Presentations: Ray Gamma commented on the need for synthetic dog turf at the proposed new dog park in the Summerhill-Lawrence Station Area Public Parkland.
10. Adjournment: On a motion by Commissioner Guerra and second by Commissioner Silva to cancel (6-0-1) the December meeting. On a motion by Commissioner Guerra and second by Commissioner Martinez, the meeting was adjourned (6-0-1) at 9:30 p.m.


Prepared by:


Dale Seale
Deputy Director of Parks & Recreation

Reviewed by:


Andrew Knaack
Commission Secretary

Submitted by:


James Teixeira
Director of Parks & Recreation
Commission Liaison

REV	NO.	DESCRIPTION	DATE	BY
1	1	1	1	1
2	2	2	2	2
3	3	3	3	3
4	4	4	4	4
5	5	5	5	5
6	6	6	6	6
7	7	7	7	7
8	8	8	8	8
9	9	9	9	9
10	10	10	10	10
11	11	11	11	11
12	12	12	12	12
13	13	13	13	13
14	14	14	14	14
15	15	15	15	15
16	16	16	16	16
17	17	17	17	17
18	18	18	18	18
19	19	19	19	19
20	20	20	20	20
21	21	21	21	21
22	22	22	22	22
23	23	23	23	23
24	24	24	24	24
25	25	25	25	25
26	26	26	26	26
27	27	27	27	27
28	28	28	28	28
29	29	29	29	29
30	30	30	30	30
31	31	31	31	31
32	32	32	32	32
33	33	33	33	33
34	34	34	34	34
35	35	35	35	35
36	36	36	36	36
37	37	37	37	37
38	38	38	38	38
39	39	39	39	39
40	40	40	40	40
41	41	41	41	41
42	42	42	42	42
43	43	43	43	43
44	44	44	44	44
45	45	45	45	45
46	46	46	46	46
47	47	47	47	47
48	48	48	48	48
49	49	49	49	49
50	50	50	50	50
51	51	51	51	51
52	52	52	52	52
53	53	53	53	53
54	54	54	54	54
55	55	55	55	55
56	56	56	56	56
57	57	57	57	57
58	58	58	58	58
59	59	59	59	59
60	60	60	60	60
61	61	61	61	61
62	62	62	62	62
63	63	63	63	63
64	64	64	64	64
65	65	65	65	65
66	66	66	66	66
67	67	67	67	67
68	68	68	68	68
69	69	69	69	69
70	70	70	70	70
71	71	71	71	71
72	72	72	72	72
73	73	73	73	73
74	74	74	74	74
75	75	75	75	75
76	76	76	76	76
77	77	77	77	77
78	78	78	78	78
79	79	79	79	79
80	80	80	80	80
81	81	81	81	81
82	82	82	82	82
83	83	83	83	83
84	84	84	84	84
85	85	85	85	85
86	86	86	86	86
87	87	87	87	87
88	88	88	88	88
89	89	89	89	89
90	90	90	90	90
91	91	91	91	91
92	92	92	92	92
93	93	93	93	93
94	94	94	94	94
95	95	95	95	95
96	96	96	96	96
97	97	97	97	97
98	98	98	98	98
99	99	99	99	99
100	100	100	100	100



COPYRIGHT ©
 ALL RIGHTS RESERVED
 NO REPRODUCTION OR TRANSMISSION IN ANY FORM OR BY ANY MEANS, ELECTRONIC OR MECHANICAL, INCLUDING PHOTOCOPYING, RECORDING, OR BY ANY INFORMATION STORAGE AND RETRIEVAL SYSTEM, WITHOUT THE WRITTEN PERMISSION OF THE LANDSCAPE ARCHITECT

DESIGN BY: [Signature]
 DRAWN BY: [Signature]
 CHECKED BY: [Signature]
 SHEET DESCRIPTION: [Signature]

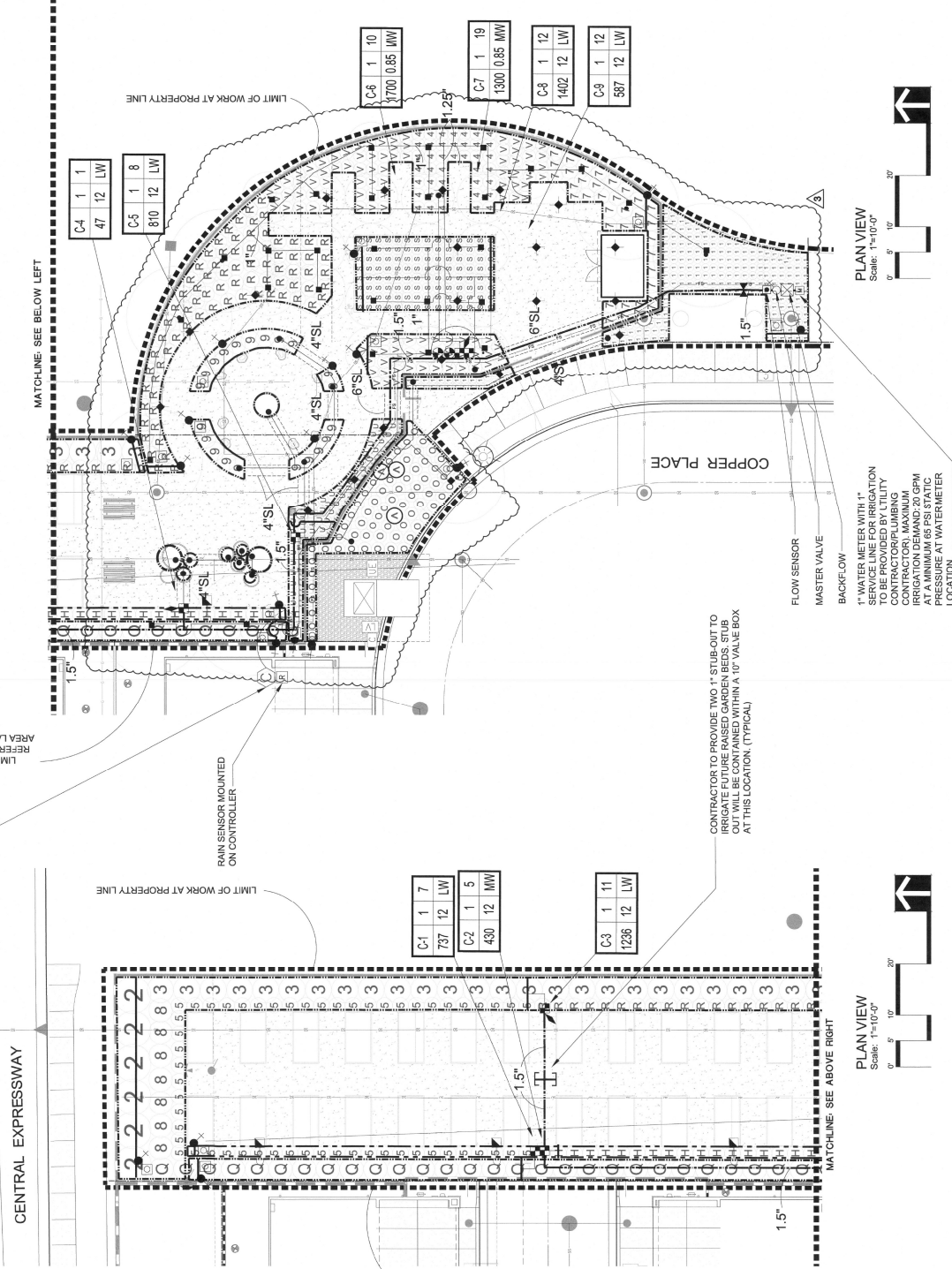
Irrigation Plan
 (Mini Park 'G')

PROJECT NUMBER: 30035
 SHEET NUMBER:

L2.5

36 OF 102 SHEETS

- NOTES:
- ONE BUBBLER SYMBOL IS SHOWN AT TREES FOR GRAPHIC CLARITY. UN-SIZED LATERAL LINE PIPING LOCATED DOWN STREAM OF 1" PIPING SHALL BE 1" IN SIZE (TYPICAL).
 - GRAPHIC CLARITY ONLY. INSTALL ALL IRRIGATION EQUIPMENT WITHIN PLANTED AREAS. IRRIGATION PIPE AND WIRE CROSSING SHALL BE SHOWN WITHIN PLANTED AREAS. IRRIGATION PIPE SHALL BE 1" IN SIZE (TYPICAL). IRRIGATION PIPE SHALL BE 1" IN SIZE (TYPICAL). IRRIGATION PIPE SHALL BE 1" IN SIZE (TYPICAL).
 - GRAPHIC CLARITY ONLY. INSTALL ALL IRRIGATION EQUIPMENT WITHIN PLANTED AREAS. IRRIGATION PIPE AND WIRE CROSSING SHALL BE SHOWN WITHIN PLANTED AREAS. IRRIGATION PIPE SHALL BE 1" IN SIZE (TYPICAL). IRRIGATION PIPE SHALL BE 1" IN SIZE (TYPICAL). IRRIGATION PIPE SHALL BE 1" IN SIZE (TYPICAL).
 - GRAPHIC CLARITY ONLY. INSTALL ALL IRRIGATION EQUIPMENT WITHIN PLANTED AREAS. IRRIGATION PIPE AND WIRE CROSSING SHALL BE SHOWN WITHIN PLANTED AREAS. IRRIGATION PIPE SHALL BE 1" IN SIZE (TYPICAL). IRRIGATION PIPE SHALL BE 1" IN SIZE (TYPICAL). IRRIGATION PIPE SHALL BE 1" IN SIZE (TYPICAL).
 - GRAPHIC CLARITY ONLY. INSTALL ALL IRRIGATION EQUIPMENT WITHIN PLANTED AREAS. IRRIGATION PIPE AND WIRE CROSSING SHALL BE SHOWN WITHIN PLANTED AREAS. IRRIGATION PIPE SHALL BE 1" IN SIZE (TYPICAL). IRRIGATION PIPE SHALL BE 1" IN SIZE (TYPICAL). IRRIGATION PIPE SHALL BE 1" IN SIZE (TYPICAL).
 - GRAPHIC CLARITY ONLY. INSTALL ALL IRRIGATION EQUIPMENT WITHIN PLANTED AREAS. IRRIGATION PIPE AND WIRE CROSSING SHALL BE SHOWN WITHIN PLANTED AREAS. IRRIGATION PIPE SHALL BE 1" IN SIZE (TYPICAL). IRRIGATION PIPE SHALL BE 1" IN SIZE (TYPICAL). IRRIGATION PIPE SHALL BE 1" IN SIZE (TYPICAL).
 - GRAPHIC CLARITY ONLY. INSTALL ALL IRRIGATION EQUIPMENT WITHIN PLANTED AREAS. IRRIGATION PIPE AND WIRE CROSSING SHALL BE SHOWN WITHIN PLANTED AREAS. IRRIGATION PIPE SHALL BE 1" IN SIZE (TYPICAL). IRRIGATION PIPE SHALL BE 1" IN SIZE (TYPICAL). IRRIGATION PIPE SHALL BE 1" IN SIZE (TYPICAL).
 - GRAPHIC CLARITY ONLY. INSTALL ALL IRRIGATION EQUIPMENT WITHIN PLANTED AREAS. IRRIGATION PIPE AND WIRE CROSSING SHALL BE SHOWN WITHIN PLANTED AREAS. IRRIGATION PIPE SHALL BE 1" IN SIZE (TYPICAL). IRRIGATION PIPE SHALL BE 1" IN SIZE (TYPICAL). IRRIGATION PIPE SHALL BE 1" IN SIZE (TYPICAL).



IRRIGATION LEGEND: REFER TO SHEET L2.06

REVISION
 REVIEWED FOR
 CODE COMPLIANCE
 Date: 8/13/2018
 By: [Signature]



Irrigation Consultant:
 Russell D. Mitchell Associates, Inc.
 2700 California Street
 West Berkeley, CA 94791
 Tel: 925.591.3985 • Fax: 925.532.8571
 www.rdmitchell.com

PLAN VIEW

Scale: 1"=10'-0"



PLAN VIEW

Scale: 1"=10'-0"



1. THESE IRRIGATION DRAWINGS ARE DIAGRAMMATIC AND INDICATIVE OF THE WORK TO BE INSTALLED. ALL PIPING, VALVES, AND OTHER IRRIGATION COMPONENTS MAY BE SHOWN WITHIN PAVED AREAS FOR GRAPHIC CLARITY ONLY AND ARE TO BE INSTALLED WITHIN PLANTING AREAS, DUE TO THE SCALE OF THE DRAWINGS. IT IS NOT POSSIBLE TO

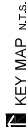
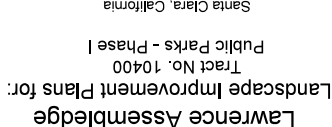
- INDICATE ALL FITTINGS, SLEEVES, CONDUIT, AND OTHER ITEMS WHICH MAY BE REQUIRED IN THE EVENT OF FIELD DISCREPANCY WITH CONTRACT DOCUMENTS, PLAN AND SPECIFICATIONS.
- NOTIFICATION AND APPROVAL OF THE OWNER'S AUTHORIZED REPRESENTATIVE AND ACCORDING TO THE CONTRACT SPECIFICATIONS, NOTIFY AND COORDINATE IRRIGATION CONSTRUCTION WITH ANY EXISTING OR FUTURE POWER LINES, TELEPHONE LINES, GAS PIPES, WATER MAINS, SEWER LINES, AND/OR UNDER WALK, ROADWAYS, PAVING AND STRUCTURES BEFORE CONSTRUCTION. IN THE EVENT THESE NOTIFICATIONS ARE NOT PERFORMED, THE CONTRACTOR ASSUMES FULL RESPONSIBILITY FOR REQUIRED REVISIONS.
- THE CONTRACTOR SHALL COMPLY WITH ALL APPLICABLE CODES, STANDARDS AND REGULATIONS, ALL WORK AND MATERIALS SHALL BE IN FULL ACCORDANCE WITH THE ELECTRICAL CODE, THE UNIFORM PLUMBING CODE, PUBLISHED BY THE WESTERN PLUMBING OFFICIALS ASSOCIATION, AND OTHER STATE OR LOCAL LAWS OR REGULATIONS, NOTHING NOT CONFORMING TO THESE CODES OR REGULATIONS, THE CONTRACTOR SHALL FURNISH WITHOUT ANY EXTRA CHARGE, ANY ADDITIONAL MATERIAL AND LABOR WHEN REQUIRED BY THE COMPLIANCE WITH THESE CODES AND REGULATIONS.
- THE CONTRACTOR SHALL COORDINATE INSTALLATION OF IRRIGATION SYSTEM WITH LAYOUT AND INSTALLATION OF THE PLANT MATERIALS TO INSURE THAT THERE WILL BE NO INTERFERENCE BETWEEN THE IRRIGATION SYSTEM AND PLANTING IN ACCORDANCE WITH THESE DRAWINGS, AND CONTRACT DOCUMENTS. THE IRRIGATION LAYOUT SHALL BE CHECKED BY THE CONTRACTOR AND OWNERS AUTHORIZED REPRESENTATIVE PRIOR TO CONSTRUCTION TO DETERMINE IF ANY CORRECTIONS ARE NEEDED. THE IRRIGATION SYSTEM SHALL BE INSTALLED AND TESTED PRIOR TO INSTALLATION OF PLANT MATERIAL.
- THE INTENT OF THIS IRRIGATION SYSTEM IS TO PROVIDE THE MINIMUM AMOUNT OF WATER REQUIRED TO SUSTAIN A GOOD PLANT HEALTH.
- IT IS THE RESPONSIBILITY OF THE MAINTENANCE CONTROLLER TO PROVIDE THE MINIMUM AMOUNT OF WATER NEEDED TO SUSTAIN A GOOD PLANT HEALTH, THIS INCLUDES MAKING ADJUSTMENTS TO THE PROGRAM FOR SEASONAL WEATHER CHANGES, PLANTS SUN, SHADE AND WIND EXPOSURE, LEAVES, WOUNDS, SLOPED SUN, SHADE AND WIND EXPOSURE.
- IT IS THE RESPONSIBILITY OF A LICENSED ELECTRICAL CONTRACTOR TO PROVIDE 120 VOLT A.C. 60 AMP DEMAND CIRCUITS TO EACH IRRIGATION CONTROL UNIT. IT IS THE RESPONSIBILITY OF THE IRRIGATION CONTRACTOR TO COORDINATE THE ELECTRICAL SERVICE SUITABLE TO THE CONTROLLERS, PROVIDE INSTRUCTIONS AND IN ACCORDANCE WITH LOCAL CODES.
- PROVIDE EACH CONTROLLER WITH ITS OWN GROUND ROD, SEPARATE THE GROUND RODS BY A MINIMUM OF EIGHT FEET, USE TWO FOUR INCH DIAMETER GALVANIZED STEEL RODS, ONE DIAMETER ULL, APPROVED COPPER CLAD ROD, INSTALL NO MORE THAN 6" OF THE GROUND ROD ABOVE FINISH GRADE, CONNECT THE GAUGE WIRE WITH A ULL APPROVED GROUND BONDING CABLE TO THE GROUND ROD, MAKE THE CONNECTION OF CONTROLLER WITH APPROPRIATE CONNECTOR, MAKE THIS WIRE AS SHORT AS POSSIBLE, AVOIDING KINKS OR BENDING.
- PROVIDE EACH IRRIGATION CONTROLLER WITH ITS OWN INDEPENDENT LOW VOLTAGE COMMON GROUND WIRE.
- SCHEDULE A MEETING WHICH INCLUDES REPRESENTATIVES OF THE IRRIGATION CONTROLLER MANUFACTURER, THE IRRIGATION CONTRACTOR AT THE SITE FOR INSTRUCTION ON THE PROPER PROGRAMMING AND OPERATION OF THE IRRIGATION CONTROLLER.
- IRRIGATION CONTROL WIRES, SOLID COPPER WITH ULL, APPROVAL FOR DIRECT BURIAL IN GROUND, COMMON GROUND WIRE SIZE #12-A WITH A WHITE INSULATING JACKET, CONTROL WIRE SEMI-ARMED REMOTE CONTROL WIRE, COLOR CODED, ALL WIRING SHALL BE MADE WITH #18 AWG COLOR OTHER THAN WHITE, SPICES SHALL BE MADE WITH ZNARY SEAL, PACKS OR APPROVED EQUAL.
- INSTALL TWO SPARE CONTROL WIRES OF A DIFFERENT COLOR THAN THE OTHERS, RUN THEM INTO AN OPEN VALVE BOX IN EACH GROUP OF VALVES.

SYMBOL	MODEL NUMBER	DESCRIPTION	NOZZLE GPM	OPERATING PSI	OPERATING RADIUS (FEET)
⊕	5006FCPL-4	RAIN BIRD POP-UP GEAR DRIVEN ROTOR (LAWN)	2.24	55	25-30
⊕	RSS-20LA	RAIN BIRD POP-UP GEAR DRIVEN ROTOR (LAWN)	1.75	55	25-30
⊕	5006FCPL-4 R651-12LA	RAIN BIRD POP-UP STREAM ROTATING SPRINKLER (LAWN)	1.56	45	13-18
⊕	R13-18F	RAIN BIRD BUBBLER (SHRUB)	0.25	30	TRICKLE
⊕	1401 SERIES	RAIN BIRD BUBBLER (TREE) 2 PER TREE.			
■	1401 SERIES	REFER TO BUBBLER DETAIL FOR QUANTITY OF BUBBLERS PER TREE SET.	0.25	30	TRICKLE
⬆	ARV050	RAIN BIRD AIR RELIEF VALVE			
⬆	WL-7500-T	NDS SCH 40 BALL VALVE OR APPROVED EQUAL			
⬆	OPENING	RAIN BIRD DRIP ZONE INDICATOR			
⬆	-	APPROXIMATE CONNECTION POINT BETWEEN DRIPLINE TUBING AND PVC SUPPLY. REFER TO DRIPLINE TUBING CONNECTION DETAIL FOR MORE INFORMATION.			
⬆	XGZ-PCB-100-COM	RAIN BIRD REMOTE CONTROL VALVE DRIP ZONE MT (3-200GPM)			
⬆	PEB SERIES	RAIN BIRD REMOTE CONTROL VALVE			
⬆	44-LRC	RAIN BIRD QUICK COUPLING VALVE			
⬆	LGT-XX-6S	LEEMCO STAINLESS STEEL GATE VALVE (LINE SIZE 1/2" AND SMALLER)			
⬆	F510P/P7162D	PAIGE RAINBIRD FLOW SENSOR			
⬆	3100200	2" SUPERIOR MASTER VALVE (NORMALLY OPEN)			
⬆	975XLSL-42"	WILKINS REDUCED PRESSURE BACKFLOW ASSEMBLY			
⬆	F510P/P7162D	PAIGE RAINBIRD FLOW SENSOR			
⬆	3100150	1.5" SUPERIOR MASTER VALVE (NORMALLY OPEN)			
⬆	975XLSL-1/4-1/2"	WILKINS REDUCED PRESSURE BACKFLOW ASSEMBLY			
⬆	WRZ-RFI	RAIN BIRD WIRELESS RAIN AND FREEZE SENSORS MOUNTED ON THE CONTROLLER			
⬆	ESP-X/ME/ 10FSOL/X/ME/ PL3150	RAIN BIRD 4-1/2 STATION EXPANSION MODULES CONTROLLER WITHIN A PEDESTAL ENCLOSURE WITH CELLULAR DATA MODEM, COMMUNICATION CABLE TO CONNECT ONE CONTROLLER WITH ANOTHER			
⬆	975XLSL-1/4-1/2"	RAIN BIRD CONTROLLER WITHIN A PEDESTAL ENCLOSURE WITH A CELLULAR DATA MODEM.			
<p>CONTROLLER AND STATION NUMBER</p> <p>REMOTE CONTROL VALVE SIZE (IN INCHES)</p> <p>FLOW (GPM)</p> <p>WATER USE CLASSIFICATION OF ZONE</p> <p>APPLICATION RATE (IN/HR) OR DRIPLINE SPACING</p> <p>AREA (SQ. FT.)</p> <p>ASSOCIATED REMOTE CONTROL VALVE</p> <p>MAIN LINE:</p> <p>2 1/2" AND LARGER: 1120-CLASS 315 PVC PLASTIC PIPE WITH SCHEDULE 80 PVC SOLVENT WELD 1120-CLASS 315 PVC PLASTIC PIPE COVER, 2" AND LARGER: 1120-SCHEDULE 40 PVC PLASTIC PIPE WITH SCHEDULE 40 PVC SOLVENT WELD FITTINGS, 2" COVER.</p> <p>LATERAL LINE:</p> <p>3/4" AND LARGER: 1120-SCHEDULE 40 PVC PLASTIC PIPE WITH SCHEDULE 40 PVC SOLVENT WELD FITTINGS, 18" COVER.</p> <p>SLEEVING (SL):</p> <p>SCHEDULE 40 PVC PLASTIC PIPE, COVER TO BE AS INDICATED IN SPECIFICATIONS OR AS INDICATED ABOVE FOR PIPE DEPTH OF COVER.</p> <p>DRIPLINE REMOTE CONTROL VALVE</p>					
<p>DRIPLINE ZONE:</p>					
<p>RAIN BIRD 97CV SERIES DRIPLINE WITH X5 INSERT FITTINGS: PART #97CV-06-12 TUBING TO BE INSTALLED BELOW GRADE WITH A 12" O.C. GRID ACCORDING TO THE MANUFACTURER'S RECOMMENDATIONS. ALL EXHAUST HEADERS SHALL BE 1" SCH 40 PVC, 3" DRIPLINE HEADER (8M) OR 1" OR 1" SCH 40 FLEXIBLE PVC USE SCH. 40 PVC SOLVENT WELD FITTINGS. EXTEND PVC HEADERS TO THE ENDS OF ALL DRIP ZONES TO BALANCE FLOW IF REQUIRED. SEE DETAILS FOR FURTHER INFORMATION.</p>					
<p>APPROXIMATE ROUTING OF FLOW SENSOR AND MASTER VALVE WIRES IN SEPARATE 2" CONDUITS. REFER TO DETAILS FOR MORE INFORMATION.</p>					

GPM: GALLONS PER MINUTE
IPS: IRON PIPE SIZE
IN/HR: INCHES/ HOUR
MPT: MALE PIPE THREAD
PSI: POUNDS PER SQUARE INCH
QCV: QUICK COUPLING VALVE
RCV: REMOTE CONTROL VALVE
SCH: SCHEDULE
SL: SLEEVE
TYP: TYPICAL

36 OF 102 SHEETS

PROJECT NUMBER: 300-9



REVISIONS/SUBMITTALS	BY	DATE
FIRST CITY SUBMITTAL	04/25/19	LT
SECOND CITY SUBMITTAL	09/24/19	LT
THIRD CITY SUBMITTAL	09/25/19	LT
FOURTH CITY SUBMITTAL	09/25/19	LT
FIFTH CITY SUBMITTAL	09/25/19	LT
SIXTH CITY SUBMITTAL	09/25/19	LT
SEVENTH CITY SUBMITTAL	09/25/19	LT
EIGHTH CITY SUBMITTAL	09/25/19	LT
NINTH CITY SUBMITTAL	09/25/19	LT
TENTH CITY SUBMITTAL	09/25/19	LT
ELEVENTH CITY SUBMITTAL	09/25/19	LT
TWELFTH CITY SUBMITTAL	09/25/19	LT
THIRTEENTH CITY SUBMITTAL	09/25/19	LT
FOURTEENTH CITY SUBMITTAL	09/25/19	LT
FIFTEENTH CITY SUBMITTAL	09/25/19	LT
SIXTEENTH CITY SUBMITTAL	09/25/19	LT
SEVENTEENTH CITY SUBMITTAL	09/25/19	LT
EIGHTEENTH CITY SUBMITTAL	09/25/19	LT
NINETEENTH CITY SUBMITTAL	09/25/19	LT
TWENTIETH CITY SUBMITTAL	09/25/19	LT
ONE AND A HALF REVISIONS	10/25/19	LT



KEY MAP N.T.S.
CITY OF SANTA CLARA BUILDING DIVISION
DATE: 07/13/19
BY: M. NGUYEN

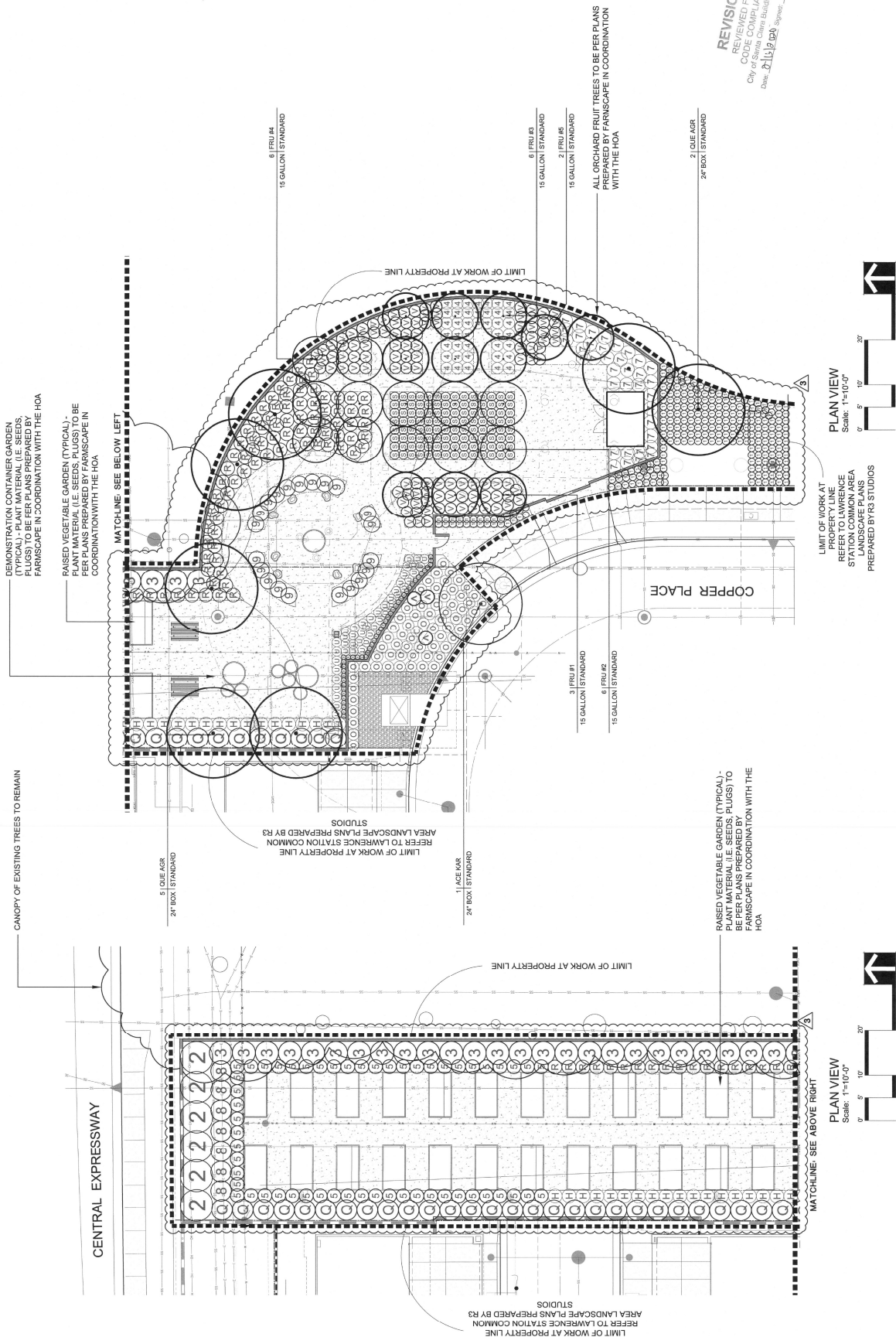
DESIGN BY: LT
DRAWN BY: LT
CHECKED BY: LT
SHEET DESCRIPTION: LT

Planting Plan
(Mini Park 'G')

PROJECT NUMBER: 300255
SHEET NUMBER: 300255

L3.5

50' 0" 100' SHEETS



PLANTING LEGEND: REFER TO SHEET L3.6

POTTERY PLANTING LEGEND

PLANTER A:



WEST SIDE (FACING TABLES)

PLANT EACH PLANTER WITH:
ONE (1) SIX (6) 1 GALLON DANIELLA GAURULEA CASSIA BLUE
ONE (1) FIVE (5) GALLON TRACHELOSPERMUM ASIATICUM (VINE)
ATTACH TO VERTIGREEN TRELLIS

(A) SIX (6) 1 GALLON DANIELLA GAURULEA CASSIA BLUE
(B) ONE (1) FIVE (5) GALLON TRACHELOSPERMUM ASIATICUM (VINE)
ATTACH TO VERTIGREEN TRELLIS

PLANT SCALE: 3/4" = 1'-0"

ALL PLANTERS AVAILABLE FROM TOURNESOL SITEWORKS (WWW.TOURNESOL.SITEWORKS.COM)

PLANTER A: ALL PLANTS COLLECTED AND SHOWN ARE SPECIES RECOMMENDED BY US. GREEN FINISH TO BE BLACK PVC WITH VERTIGREEN TD TRELLIS. 3" GRID SPACINGS, TO BE ATTACHED AND INSTALLED PER MANUFACTURER'S RECOMMENDATIONS.

NOTES:

- EACH POT SHALL HAVE AT LEAST LAYERS OF 3" SAND DRAINAGE BOTTOM WITH THE REMAINING OF POT FILLED WITH PEBBLES FROM WWW.LYNGSO.COM. EACH POT SHALL BE AUTOMATICALLY IRRIGATED. CONTRACTOR TO PROVIDE IRRIGATION SYSTEM WITH VALVES FOR EACH POT. TOP MULCH WITH 2" LAYER OF LA PAZ BUCKLE MULCH. PROVIDE MULCH MATERIAL TO LANDSCAPE ARCHITECT PRIOR TO PURCHASING.
- CONTRACTOR TO PROVIDE IMAGES OF ALL CONTAINER PLANT MATERIAL TO LANDSCAPE ARCHITECT PRIOR TO PURCHASING.

Planting Legend

PROJECT NUMBER: 30
EFT NUMBER:

L3.6

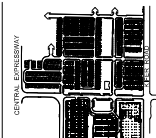
102 SHEETS



Lawrence Assembledge
Landscape Improvement Plans for:

Santa Clara, California

VISIONS/SUBMITTALS	BY
1ST CITY SUBMITTAL	04-05-18
2ND CITY SUBMITTAL	06-24-18
3RD CITY SUBMITTAL	03-15-19
4TH CITY SUBMITTAL	04-26-19
5TH CITY SUBMITTAL	10-16-19



 KEY MAP N.T.S. COPYRIGHT © 2008 INC.	THE INFORMATION CONTAINED HEREIN IS UNCLASSIFIED EXCEPT WHERE SHOWN OTHERWISE. IT IS THE PROPERTY OF THE LABORATORY AND MUST BE RETURNED TO THE LABORATORY AND NOT BE DISTRIBUTED OUTSIDE YOUR AGENCY.	DATE: 10/16/2019
		SIGN BY: RD
		DRAWN BY: LT
		CHECKED BY: RD
	SHEET DESCRIPTION:	

Planting Legend

PROJECT NUMBER: 30
EFT NUMBER:

102 SHEETS

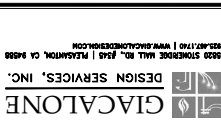
C9.0

[illegible]

SUMMERHILL HOMES™
COMMUNITIES OF DISTINCTION

SUMMERHILL
SPARTAN
COMMUNITIES

COMMUNITIES OF DISTINCTION


[illegible]

PRIVATE PARKING DETAIL SHEET

PROJECT MANAGER: D. CROWFOOT
DRAWN BY: CCP
CHECKED BY: A.M.
SCALE: AS SHOWN
JOB NUMBER: 14-100
DATE LAST MODIFIED: 10-10-19
SHEET

OF 12 SHEETS

CAUTION:
CONTACT U.S.A. (811) (2) FULL WORKING DAYS PRIOR
TO STARTING WORK IF EXISTING UTILITIES CONFLICT WITH
POLE LOCATION, FIELD ADJUST TO CLEAR EXISTING
UTILITIES A MINIMUM OF 3'-0".

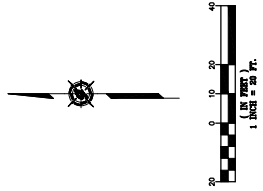


CALL BEFORE YOU DIG

811

CALL USA TOLL FREE

TWO DAYS BEFORE YOU DIG



LAWRENCE STATION - SITE LIGHTING
SANTA CLARA, CA

REFERENCE ONLY

Date: 02-28-19

Scale: 3/8" = 1'-0"

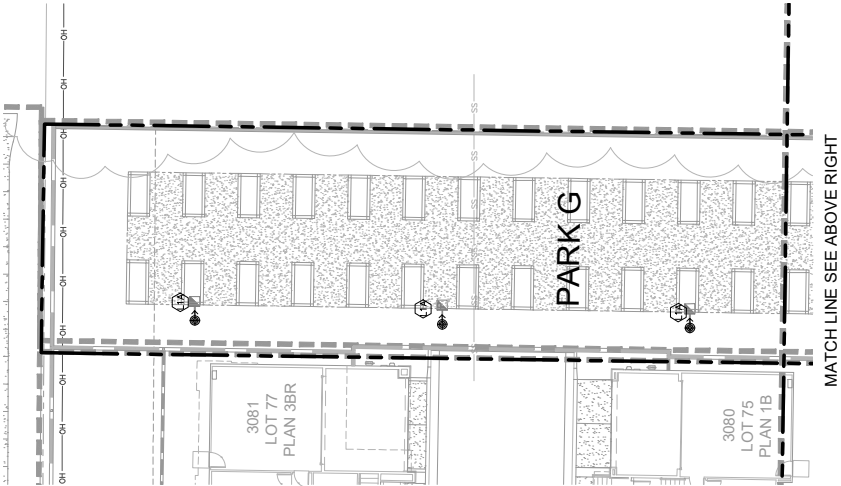
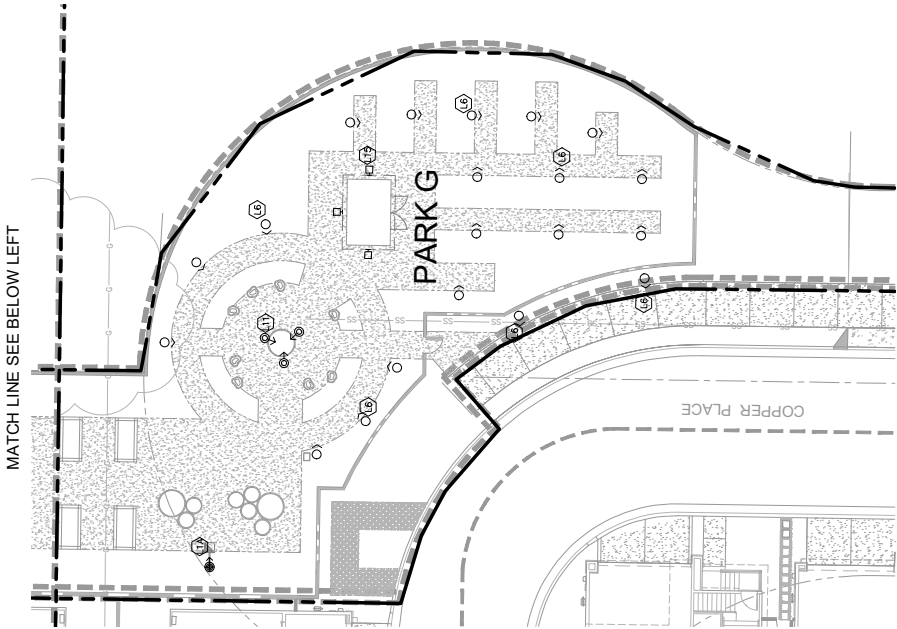
Drawn By: ZZ & ML

Description:
SITE LIGHTING PLAN
PARK G

Sheet No.

LT.S7

LEGEND	TAG	SYMBOL	DESCRIPTION
	4.1		LED POLE LIGHT WITH HOUSE SIDE SHIELD, TYPE II
	4.2		LED POLE LIGHT, TYPE V
	4.3		LED POLE LIGHT
	4.4		LED POLE LIGHT WITH HOUSE SIDE SHIELD, TYPE II
	4.5		LED POLE LIGHT, TYPE II
	4.6		LED POLE LIGHT, TYPE VI
	4.7		LED BALLAND
	4.8		LED TRUSS MOUNTED ADJUSTABLE LOW VOLTAGE LIGHT
	4.9		LED RECESSED STEP LIGHT
	4.10		NOT USED
	4.11		LED INGRADE TREE ACCENT LIGHT
	4.12		LED INGRADE ACCENT LIGHT
	4.13		NOT USED
	4.14		LED COLUMN LIGHT
	4.15		LED WALL SCONCE
	4.16		LED RECESSED STEP LIGHT
	4.17		COMMON AREA WALL STRUCTURE LED WALL SCONCE
	4.18		LED LINEAR SIGNAGE LIGHT
	4.19		NOT USED
	4.20		LED CEILING MOUNTED DOWN LIGHT
	4.21		LED VANITY LIGHT



Santa Clara Community Garden Program Guiding Principles 2020 Lawrence Station Area Mini Park G - Community Garden Rules

Guiding Principles

The Community Garden Program is a City (public) recreation program. The Guiding Principles established for the City of Santa Clara Community Garden Program (Program) support and promote: safe garden practices, garden aesthetics, equity, environmental stewardship, and creation of a community of gardening neighbors. While Guiding Principles apply to the Program as a whole, Garden Rules are site specific due to the differences in each community garden background, development, size, shape, locations, land use restrictions (such as CC&R's or), as well as specific adjacent neighborhood issues and concerns.

Community Garden Rules- Mini Park G

Garden Background

The City of Santa Clara established a 0.27 acre Community Garden within the Community Facilities District 2019-1 (Lawrence Station) at 3450 Copper Road. The Community Garden is a City owned and operated public facility with individual raised garden beds where members of the general public are able to reserve a garden bed for purpose of growing fruits, vegetables, flowers, herbs and other plants according to the specific Garden Rules enumerated below.

This Community Garden is intended to be a beautiful, safe, and peaceful refuge. As in any group endeavor, individual gardeners have both rights and responsibilities as community garden members that assist in the functioning of the community program.

Membership

Garden Program Membership includes access to the community garden, one raised garden bed filled with approved/appropriate soil, use of water, access to educational classes, access to the tool shed and use of its contents, and a proportionate yield from the community orchard and compost bins.

The Community Garden Program uses the following definitions and standard application of rules:

- 1) A Primary Garden Member may be defined as an individual, a lead organizer of a group, or an entity assigned sole access to a garden bed.
- 2) The Primary Garden Member may identify a Secondary Garden Member who will have equal access to the garden bed. Both the Primary Garden Members and Secondary Garden Members are defined as "Garden Members" and must be Santa Clara Residents.
- 3) One household, group or organization cannot rent more than one (1) garden bed. Two households or more may share one bed upon request.
- 4) To become a Garden Member, you must do the following before the City provides Community Garden access and bed assignment:
 - a) Submit a Garden Application online or in person and receive approval.
 - b) Sign the Release of Liability & Assumption of Risk Agreement.
 - c) Pay annual fees and security deposit.
 - d) Attend an orientation.



- 5) Applications are accepted year-round. New Garden Members admitted into the program before November 1st will join the current program year at a pro-rated rate (2021-2022). New Garden Members admitted after November 1st will join the next program year (2022-2023).
- 6) Garden Membership is for one year (March 1– February 28 or 29) with registration happening in February for each sub-sequent year.
- 7) Renewal applications are mailed to current Primary Garden Members in good standing (see “Rules and Regulations”) in December for the following membership year. If the signed rental application, agreement, and annual dues are not received by February 15, the bed will be made available to those on the waitlist. Membership renewal payments can be made online upon request.
- 8) Memberships can be renewed for a maximum of three (3) years. After the three-year term limit, eligible participants can submit a new application for the waiting list starting March 1.
- 9) During registration, returning and new applicants will be required to provide proof of residency in the form of a government issued photo I.D., and a copy of a current utility bill or vehicle registration. Other forms of proof of residency may be considered subject to approval by the City.
- 10) Payment in full is to be made by cash, check, VISA/Master Card/Discover/American Express, or money order, payable to the City of Santa Clara.
- 11) Garden Members do not have any ownership in the garden beds and may not sell, transfer, or sublet their garden bed. In the case where the Garden Member(s) is unable to care for their assigned bed, the transfer of a bed will be managed by the City.
- 12) A Garden Member is allowed to bring guests to show them their garden bed, and must accompany guests into and out of the garden.

Waitlist

If the number of applicants exceeds the available beds, those applicants will be placed on a waiting list in adherence to the priority and eligible qualifications. Garden Members whose 3-year term limit has expired may submit a new application for the waiting list. City of Santa Clara staff maintains the waitlist. The waitlist application can be found on the City’s Parks & Recreation ActiveNet Registration portal.

Garden Member Eligibility & Priority Categories

- 1) City of Santa Clara Residents living within the Community Facilities District (CFD)
- 2) City of Santa Clara Residents who receive Cal Fresh (WICC, SNAP) benefits
- 3) Residents 55 and older and/or families with children under age 18
- 4) All other City of Santa Clara Residents over age 18

Each of the Priority Categories will be weighted in the order listed per application.

Annual Fees

The City charges an annual Community Garden Program membership fee to defray the costs of water and program administration.

Annual Use Fees		
Bed size (approximate)	Individual 3Hx4Wx8L. Raised Bed	ADA or 55+ 3Hx4Wx8L Raised Bed
Deposit (refundable)	\$50.00	\$50.00
CFD Participation fee	TBD	TBD



(March 1 – Feb 29)		
Resident Participation Fee (March 1 – Feb 29)	TBD	TBD

Membership fees are *non-refundable* and *non-transferable*. Mid-year rentals (on or after March 1) will be prorated accordingly (full deposit required). Payment plans and financial assistance may be available upon request.

Security Deposit

A one-time \$50.00 key, bed cleaning and compliance deposit will be collected for each garden bed to encourage Garden Members to keep their garden bed active, weed-free, and to comply with all Community Garden Guiding Principles & Rules. Deductions to deposits (due to maintenance performed by City Staff) will be tracked by the Garden Coordinator and applied at the time your Garden Membership ends. The remaining balance of the deposit is refundable when the bed is vacated and key is returned, pending approval from the City. (Please see "Termination").

Administrative Procedures

The City of Santa Clara Parks & Recreation Department staff is responsible for administering the Community Garden and enforcing Community Garden Guiding Principles & Rules. City staff duties include garden inspection, policy enforcement and interpretation, maintenance of physical facilities, organization of work parties, maintenance of approved members list and waitlist, and other recreational and garden community activities.

The Community Garden Guiding Principles & Rules may be amended by the City at its sole discretion. Garden Members shall be subject to the Guiding Principles & Rule as amended regardless of notice of any such amendments, but when possible, the City will notify Garden Members in advance (i.e. bulletin board, garden member meetings, email, etc.) of any change to the program, the guidelines, and/or fees.

The main contact, for any matter relating to the Community Garden Program, is the Community Garden Coordinator:

Derek Bryant, Recreation Coordinator
2446 Cabrillo Ave., Santa Clara, CA, 95051
DBryant@SantaClaraCA.gov
(408) 615-3743

RULES AND REGULATIONS:

Community Garden Principles & Rules are set by the City of Santa Clara. Failure to comply with the rules and regulations may result in loss of garden bed without refund and prohibition on future membership. City shall have the right to inspect any garden bed at any time.

Garden Member waives any and all claims for personal or property damage against the City, its officers, agents, or employees, arising directly or indirectly out of this policy. Garden Member further agrees to indemnify City against any such claims made by persons coming into the Community Garden premises at the actual or implied invitation of the Garden Member.

The City is not liable for loss or damage to personal property, vandalism to the garden bed, and/or destruction of crops due to disease, pests, rodents, or inclement weather.

City Responsibilities

- A. Assign garden beds to individuals, groups, and community organizations as appropriate and based on priority criteria.
- B. Provide garden bed, water, hoses, trash receptacles and various garden tools.
- C. Work to diminish “pest” problems (e.g., rodents, squirrels, etc.), but will not guarantee that pests will not invade the garden.
- D. Perform periodic general cleanup. A notice regarding scheduled work will be posted on the Garden’s bulletin board whenever possible.
- E. Maintain all walkways, fencing, and non-garden bed landscaping, including citrus and fruit trees.
- F. Provide access to storage shed equipped with limited supplies and large tools for gardeners’ use.
- G. Adhere to the Santa Clara County Orders and protocols for public safety in a community garden setting.
- H. The City is not responsible for the theft of crops, tools, or personal belongings.

Garden Member Responsibilities

The Primary Garden Member on the registration form is solely responsible for the maintenance of the entire garden bed, the borders of the garden bed, and for payment of all associated fees. It is the responsibility of Garden Members to supervise minors and guests while in the Community Garden to ensure guests are following all rules and regulations. Garden Members are responsible for the actions of all minors/guests they bring into the Community Garden.

- 1) Attend two (2) Garden Member Meetings within the program year. Garden Members will learn about upcoming events, communicate concerns, share ideas, and build relationships.
- 2) Attend one (1) Santa Clara Master Composters Workshop within the program year.
- 3) Ensure the gate and storage shed are locked when they are the last member leaving for the day. It is also each Garden Members responsibility to close the gate behind them when entering the garden and do not open the gate to allow non-Garden Members to enter the garden.
 - a) Providing the Garden Key Card/Code to anyone not listed on the Membership Application and Agreement is cause for immediate termination.
- 4) Provide all personal use tools, seeds, plants, equipment, and other supplies necessary for gardening.
- 5) Contact the Garden Coordinator if unable to tend to their garden bed for an extended period.
- 6) Inform the Garden Coordinator of any changes to their contact information, including home address and telephone number.
- 7) Inform the Garden Coordinator if you wish to discontinue your garden membership, in writing, so that the bed may be reassigned to the next person on the waiting list.
- 8) Report conflicts amongst Garden Members, maintenance issues, or unauthorized guests to the Community Garden Coordinator.

Code of Conduct

All Garden Members and guests shall conduct themselves as responsible individuals, and with consideration towards others. Garden Members will be respectful of the fact that the garden is

located in a community park where children and families are present and will not behave in such a way or display items that may be deemed offensive or inappropriate.

Garden Members Shall Not:

- A. Bring vehicles into the Community Garden area at any time.
- B. Bring unleashed pets into the garden; pet owners must clean up after their pet. Some animal's behavior may constitute a nuisance and not be permitted.
- C. Enter another Garden Members bed without permission. Removal of any item (crop, plant, tool, etc.) that is not yours is considered theft and cause for permanent loss of participation in Garden.
- D. Bring illegal substances, firearms, weapons or alcoholic beverages onto Community Garden premises.
- E. No smoking of any kind is allowed in the Community Garden, including but not limited to: cigarettes, e-cigarettes, cigars, or marijuana/canabis.

Hours of Operation

Sunday – Saturday, 6:00am to ½ hour after sunset, year-round.

Garden Amenities

The Community Garden is full of amenities. These amenities were placed for members' use and should be maintained properly to ensure its longevity.

- 1) General Common Areas
 - a) Be sure to clean up after yourself and ensure waste is placed into proper trash containers. Only waste originating from the Community Garden can be disposed in the trash containers.
 - b) No pets are allowed in the Community Garden, with the exception of Service Animals.
 - c) Pick weeds around the borders of your garden bed.
- 2) City of Santa Clara Display Garden areas
 - a) The designated demonstration beds should not be maintained by anyone but the staff or volunteer appointed by the City staff.
- 3) Compost
 - a) All organic waste should be chopped and deposited in the compost area.
 - b) Weeds and diseased plants should be deposited in the compost area.
 - c) Participants are welcomed and encouraged to turn compost piles frequently.
 - d) All gardeners can use available completed compost.
- 4) Restrooms
 - a) Access is located near the Community Center.
- 5) Parking lot
 - a) Public parking is available at Copper and La Ramba Avenue. All supplies should be unloaded in the parking area and transported to the garden area via hand, handcart, or wheelbarrow.
 - b) Dumping of any materials in the parking area is strictly prohibited.
- 6) Water use
 - a) There are garden bibs and hoses for Garden Members to share.
 - b) Drain and hang hoses after each use.
 - c) Consult with Garden Coordinator before tampering with irrigation or hoses.
 - d) For more see "Water" in "Planting Guidelines" Section.
- 7) Tool Shed and Storage
 - a) In the shed you will find a few basic tools.



- b) Please return tools cleaned and promptly when you are through using them, so they are available to other gardeners. Please report missing or broken tools to the Garden Coordinator. Tools are used and maintained at the gardener's own risk. Tools are for garden use.
- 8) First Aid
 - a) In case of an emergency, call 9-1-1.
 - b) There is First Aid in the shed, in case of injury.
- 9) Garden Key
 - a) Primary Garden Members are allowed two (2) Garden Keys per household. If the Secondary Garden Member lives in another household, he/she/they must fill out a registration form to receive a Garden Key Card.
 - b) Do not share Garden Keys with any unauthorized individuals
 - c) Report lost or stolen Garden Key Cards immediately to the Garden Coordinator.
 - d) A \$5.00 deduction of your deposit will be applied for any issued Garden Keys not returned at the end of Garden Membership.
- 10) Bulletin Board
 - a) The Community Garden Bulletin Board is for the purpose of posting Community Garden related information only. All items posted on the bulletin board must contain the date posted and the name and Bed number of the Garden Member. Items not in compliance or inappropriate will be removed. All items will be removed after 30 days.

NOTICES, VIOLATIONS, AND PROCEDURES:

Contacting You

It is your responsibility to keep the Garden Coordinator informed of any changes of address, phone numbers, or email address. Important information (renewal packets, etc.) will be mailed to your last known address. Notices to individual Garden Members may be mailed, sent via email, attached to a post in the garden bed, or made by phone. General notices will be posted on the bulletin board.

Inspections

Adherence to established rules and regulations is critical in to ensure the Community Garden remains in quality condition. Periodic checks will be made to all garden spaces to ensure they are being cared for properly and follow all Community Garden Guiding Principles. The Garden Coordinator is responsible for interpreting and enforcing the policies.

Vacations and Extended Absences

Vacationing Garden Members or those who prefer to “rest” their garden bed during the cold seasons, are not exempt from weed removal and other maintenance rules, or compliance deadlines.

Abandonment

Any garden bed that appears to be abandoned will be sent an “Abandonment Notice”. The Garden Member will have fifteen (15) days to restore the bed. If progress has not been made, the garden bed will be reassigned, and the deposit will be forfeit.

Vandalism & Theft

Vandalism and/or theft will not be tolerated. These acts are cause for immediate termination of all Community Garden privileges without refund of participation deposit. Accusations of misconduct, vandalism or theft will be considered by Community Garden Coordinator. If you

observe an intruder in the community garden area, please contact the Santa Clara Police Department at (408) 615-4700.

Termination Based on Violations

When a garden bed is found to conflict with these regulations, the Primary Garden Member will be notified of the violation(s). Notification of a violation shall be transmitted via letter from the City to the Primary Garden Member as follows:

- a. Notification #1: The first email and/or phone call will serve as notice of the violation and provide the date (15 days from date sent) that the garden bed will be checked for compliance.
- b. Letter #2: If, after those 15 days, the garden bed is found to still be noncompliant, a letter will be sent to the Primary Garden Member advising them that that compliance must occur by the date provided (15 days from date sent).
- c. If Garden Members fails to comply, then garden bed will be immediately forfeited with no refund of fees and deposits.

If a Primary Garden Member receives three (3) separate notifications of noncompliance within a six (6)-month period, then any subsequent violations within that same six (6)-month period will result in forfeiture of garden bed with no refund of fees paid. The Garden Member(s) will not be able to join the waiting list for a calendar year.

Upon any termination due to violations between a Garden Member and the City, a Garden Member will not be entitled to a refund of any fee paid to the City, nor will they be entitled to any payment or reimbursement from the City for any materials planted, growing, or otherwise located within the Community Garden or for any improvements made on the premises. All or any part of such material and improvements shall become the property of the City.

Appeals

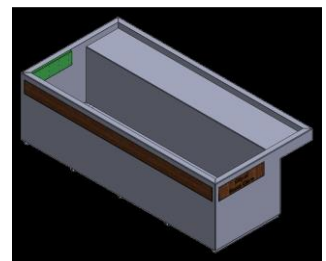
All final evictions are reviewed by the Garden Coordinator. Garden Member grievances will be presented to the Community Garden Coordinator.

Garden Members may appeal to the Director of Parks and Recreation, whose decision will be final.

James Teixeira, Director of Parks and Recreation
1500 Warburton Ave, Santa Clara, CA, 95050
(408) 615-2260

GARDENING GUIDELINES:

The Community Garden features custom steel fabricated raised garden beds decorated with an IPE wood inlay. There are both standard and ADA access models. They come with many advantages to maintain the beauty and quality of the park for the next twenty years. Raised garden beds, or “garden boxes,” keep pathway weeds from your garden soil, prevent soil compaction, provide good drainage, and serve as a barrier to pests such as slugs and snails. The sides of the beds keep your valuable garden soil from eroding or washing away



during heavy rains. These custom beds are slightly raised off the ground and have a solid bottom so they may be moved. This feature is important in the rare case major utility work is needed. In many regions, gardeners can plant earlier in the season because the soil is warmer and better drained when it is above ground level. By raising the soil level, raised garden beds also reduce back strain when bending over to tend the bed.

Organic Gardening

The Community Garden Program adheres strictly to the gardening principles, concepts, and practices popularly called “organic.” Products simply labeled “organic” or “natural” are not allowed unless they are approved by the U.S. Department of Agriculture’s (USDA) National Organic Program or by the Organics Materials Review Institute (OMRI). To see if a substance is allowed in a community garden check the USDA National Organic Program National List, Subpart G, 205.601 and 205.602 or the OMRI Web site (www.omri.org).

Planting Guidelines

- 1) Garden Members may grow fruits, vegetables, herbs, flowers, and edible weeds in their bed. Edible weeds must be harvested and not allowed to go to seed.
- 2) Due to the three (3) year term limit, and garden bed design, seasonal or annual crops are encouraged. Therefore, the following crops are prohibited:
 - a) Water-intensive crops: Taro, rice, sugar cane.
 - b) Invasive crops and weeds: Bamboo, Japanese Honey Suckle, English Ivy, Passion Flower, Bermuda grass, Mint.
 - c) Trees or permanent plants: Trees, grape vines, rose bushes, blackberry, or raspberry bushes, etc.
 - d) Any government regulated illegal plants: cannabis, tobacco, etc.
- 3) Crops that produce “runners,” or spread from the roots, should be constantly managed or grown in a container above the soil surface. These plants are, but not limited to, strawberries and the Mint family. Garden Member may be asked to remove the plant if it is not properly contained.
- 4) Garden Members are encouraged to plant a variety of crops (at least two). The exception would be if you are growing a cover crop for the duration of the winter.
- 5) Beds are not to be used to store materials/tools.
- 6) Diseased plants (such as whitefly or powdery mildew) are to be treated or removed within five days of written notification from City. Gardeners are urged to notify the Community Garden Coordinator immediately if they suspect diseased plants on another person’s garden bed.
- 7) Respect the need of your neighbors’ plants for sunlight. Do not plant crops in a way that will cause excessive shading to nearby beds.
- 8) Trellises, arbors, or fencing around the bed is permitted so long as they follow these guidelines:
 - a) Must be installed inside the bed.
 - b) May not be more than 6 feet high from the soil surface.
 - c) May not shade a neighbor’s bed.
 - d) May not be installed permanently or anchored into the garden bed.
- 9) Any permanent drilling into the garden bed with nails or screws are absolutely prohibited.
- 10) All fencing and trellis material must have a pleasant appearance, be an earth tone/neutral color, and be non-toxic and non-rusting.
- 11) Tires or any toxic materials are not permitted in the garden.
- 12) Vining plants should be either trellised or may hang over the sides of the garden bed but cannot lie across the ground or obstruct pathways. The Garden Coordinator or City

representative has the right to trim excess plants overhanging into the walkway without prior notification to the Garden Member.

- 13) Garden Members are to keep their garden beds clear of all waste materials including, but not limited to, plastic, weeds, dead plants, and decaying fruits or vegetables.
- 14) All disease-free, non-invasive organic waste should be added to the compost area. All other waste materials must be disposed of in the provided receptacle.
- 15) Each garden bed has been provided an ideal soil profile that should produce a healthy harvest. No major amendments or modifications are needed. Accepted soil amendments include:
 - a) Chicken/steer manure applied once a year.
 - b) Raised bed or potting soil applied twice a year.
 - c) No limitations to adding compost.
 - d) No sand amendments.
- 16) Soil should stay in the bed and be cleaned up if spilled on to the decomposed granite pathways. Soil level should not mound over the edges of the boxes.
- 17) The Community Garden is a publicly maintained City property and there is no presumption of privacy.
- 18) No attachments to the City's fencing are permitted. No Garden Member shall use the City's perimeter fencing as a trellis or to hang garden equipment.

Chemicals and Fertilizers

The Community Garden will be located on City of Santa Clara property and therefore obligated to follow its policies. The City of Santa Clara prohibits the application of chemical pesticides on its property unless approved in writing by the City's Integrated Pest Management (IPM) Coordinator and is applied by a trained, certified technician. Any Garden Member who believes their bed has a pest problem that would justify the use of chemical pesticides should contact the Garden Coordinator for a consultation.

Garden Members must consult with the Garden Coordinator before using any herbicide, including those on the "less-toxic" lists.

The following table includes, but is not limited to, some substances that are allowed and prohibited:

PEST AND DISEASE CONTROL	Allowed		Prohibited
	<ul style="list-style-type: none"> - bacillus thuringiensis (Bt) - Soap Spray - Horticulture pepper/onion spray - sulfur - wood ashes - sour mil solution - dormant oils - micro-cop or equivalent nematodes (orchard use only) - diatomaceous earth (DE) 	<ul style="list-style-type: none"> - baking soda - borax, boric acid - slugs - wood ashes - ladybugs - tanglefoot - marigolds - beneficial - Pyrethrum* 	<ul style="list-style-type: none"> - rotenone - pyrethrate, pyrethroids - nicotine sulfate - malathion - diazinon - sevin - organophosphates - Roundup - Finale - Dursban - organ chlorides - chlorpyrifos
	<p>*Pyrethrin: It is a naturally occurring insect-killing chemical taken from chrysanthemum flowers. In the flowers, these bug-killers exist as a mixture of six separate chemicals that together are called pyrethrum or pyrethrins. Pyrethrins (without piperonyl butoxide or other enhancers) are permitted for use on organically grown crops.</p>		
	Allowed		Prohibited



FERTILIZERS	<ul style="list-style-type: none">- cotton seed- kelp- compost- manure- blood, bone, horn, and hoof meals- liquid fish or seaweed- fertilizers classed as "organic"	<ul style="list-style-type: none">- ammonium sulfate- ammonium nitrate- muriate of potash-superphosphates- highly soluble chemical fertilize- Ozmicote- Non organic Miracle Grow
--------------------	---	--

Water Use

Hoses

The amount of water used determines future fees. Excessive water use may be defined as the following; water allowed to leave the defined vegetable bed, water allowed to run off into the pathway, unattended water hoses left running for extended periods of time. Garden hoses must be drained before they are put away. Garden Members who continue to use water in excess may be terminated from the program.

Standing Water

To reduce the breeding of mosquitoes and the spread of West Nile Virus, no stagnant/standing water is allowed, including but not limited to water in containers and buckets.



Agenda Report

20-1090

Agenda Date: 11/17/2020

REPORT TO PARKS & RECREATION COMMISSION

SUBJECT

Recommendation to the Governance and Ethics Committee to Name the New Public Parks located at 5123 Calle Del Sol.

BACKGROUND

On November 13, 2018, the Santa Clara City Council adopted the Tasman East Specific Plan (TESP). The project area is an existing 45-acre industrial neighborhood bounded by Tasman Drive to the south, the Guadalupe River to the east, the closed Santa Clara Golf & Tennis Club to the north, and Lafayette Street to the west. The TESP creates the framework for the development of a high-density transit-oriented residential neighborhood along with supportive retail services. The TESP provides allowed uses, densities, height limits, design criteria, connections to the existing Guadalupe River trail, strategies for better access to transit, and specific locations for parkland (Attachment 2 and Attachment 3).

On July 17, 2019, the Architectural Committee approved the Ensemble Residential Project located at 5123 Calle Del Sol to construct 311 apartment units on Parcel 19 and 192 apartment units on Parcel 29. The developer has proposed to meet its parkland dedication requirements under Santa Clara City Code 17.35 and the TESP through a 4,466sf (0.1025 acres) public park dedicated to City in fee title, and a 950sf plaza dedicated to the City as an easement. Public park improvements will be constructed by the developer to the City's design criteria and specifications and will be maintained by the developer in perpetuity after dedication.

On October 20, 2020 the Parks & Recreation Commission began discussion of recommending names for the mini park and the plaza to the Governance and Ethics Committee (Item 3. File 20-982). The Commission voted to continue the item to the November 17, 2020 Parks & Recreation Commission Meeting for further discussion.

DISCUSSION

Under Council Policy No. 035 (Attachment 1), the Parks & Recreation Commission makes recommendations to the Council Governance and Ethics Committee for names of facilities relating to the Commission's purview such as parks. Proposed names must be in accordance with at least one of the criteria outlined in Council Policy 035. Should the Commission choose to recommend a park name in honor of a person, then the Commission will develop and provide a biographical sketch for the nominee(s) that provides an accurate account of the life and activities of the individual(s) under consideration including the person's name, place of residence, education, occupation, life, accomplishments and activities and other relevant details. Alternatively, the Commission could use a different nomenclature such as landmarks, regional identifiers, native plants or trees, or another name that could identify this new park location.

Proposed names and reasons for the recommendation(s) should be developed for consideration by the Commission and prior to the Commission making a recommendation to the Governance & Ethics Committee.

ENVIRONMENTAL REVIEW

The action being considered does not constitute a "project" within the meaning of the California Environmental Quality Act ("CEQA") pursuant to CEQA Guidelines section 15378(b)(5) in that it is a governmental organizational or administrative activity that will not result in direct or indirect changes in the environment. The park associated with the new residential development project is consistent with the TESP FEIR that the City certified on November 13, 2018 (after January 1, 1980).

FISCAL IMPACT

There is no fiscal impact to the General Fund associated with the current action. The developer will construct the public park improvements, provide a park sign, and maintain the park in perpetuity, all to City standards and at no cost to the City.

COORDINATION

This report has been coordinated with the City Attorney's Office.

PUBLIC CONTACT

Public contact was made by posting the Council agenda on the City's official-notice bulletin board outside City Hall Council Chambers. A complete agenda packet is available on the City's website and in the City Clerk's Office at least 72 hours prior to a Regular Meeting and 24 hours prior to a Special Meeting. A hard copy of any agenda report may be requested by contacting the City Clerk's Office at (408) 615-2220, email clerk@santaclaraca.gov <<mailto:clerk@santaclaraca.gov>> or at the public information desk at any City of Santa Clara public library.

ALTERNATIVES

1. If the Commission chooses to name the park(s) after a person, the Commission will develop and provide a biographical sketch for each person nominated that provides an account of the life and activities of the individuals under consideration including information about the person's name, place of residence, education, occupation, life, and activities and other important details of the person being recommended prior to making a recommendation to the Governance & Ethics Committee.
2. If the Commission chooses to name the park(s) using a different nomenclature such as landmarks, regional identifiers, native plants or trees, or another name that would identify the new park location (s), proposed names and reasons for the recommendation(s) should be developed prior to making a recommendation to the Governance & Ethics Committee.

RECOMMENDATION

Recommend a name for the Governance and Ethics Committee consideration for the New Public Park and/or the New Public Park Plaza located at 5123 Calle Del Sol (Ensemble Residential Project).

Reviewed by: Dale Seale, Deputy Director of Parks & Recreation

Approved by: James Teixeira, Director of Parks & Recreation

ATTACHMENTS

1. Council Policy No. 035

2. 5123 Calle Del Sol Plaza Site Plan
3. 5123 Calle Del Sol Mini Park Site Plan



NAMING OF FACILITIES

PURPOSE

To establish the criteria and procedures for the naming of City of Santa Clara buildings and facilities.

POLICY

The City Council shall name municipal buildings/facilities in recognition of the following:

- Individuals, living or deceased, who have made outstanding contributions to the City of Santa Clara or Santa Clara community
- Individuals, living or deceased, who have made contributions of local, state, national, or worldwide significance
- Geographic location, prominent environmental feature(s), or historical significance, of the area that the building/facility is located

For the purpose of this Policy, the term “facility” shall mean property, other than streets, owned by the City of Santa Clara, portions thereof, and amenities or appurtenances thereto. Examples of a “facility” include: a City park, a meeting room within a City building, a trail, or a park bench.

The renaming of existing municipal buildings/facilities shall be discouraged and shall occur only under extraordinary circumstances, after thorough study. A proposal for the renaming of an existing building or facility shall be subject to the same procedure as set forth below for the original naming of the building or facility.

PROCEDURE

1. Proposals for naming of municipal buildings or facilities shall be referred to the responsible Department Head for the facility, detailing consistency with the policy criteria for naming of facilities.
2. Upon receipt of a naming or renaming proposal of a City building or facility, the Department Head will review if the proposed name is in accordance with at least one of the criteria as outlined in this policy:
 - a. An individual, living or deceased, who has made outstanding contributions to the City of Santa Clara or Santa Clara community
 - b. An individual, living or deceased, who has made contributions of local, state, national, or worldwide significance
 - c. Geographic location, prominent environmental feature(s), or historical significance, of the area that the building/facility is located

If the naming or renaming proposal is reflective of at least one of the



NAMING OF FACILITIES

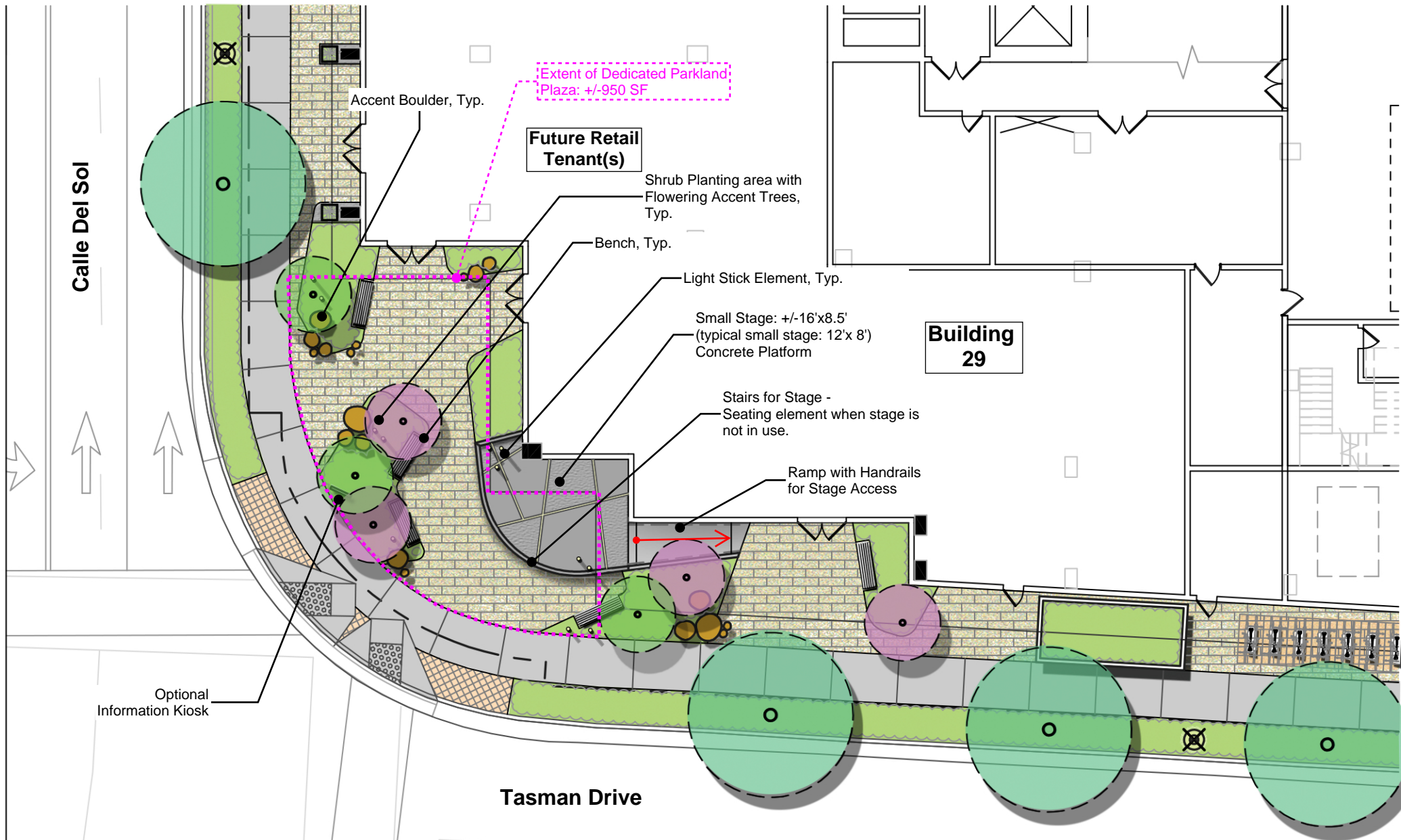
criteria, the Department Head will refer the proposal to the City Board, Commission, or Committee responsible for acting in an advisory capacity to the City Council for the building or facility at issue (e.g., a naming proposal for a park facility shall be referred by the Director of Parks and Recreation to the Parks and Recreation Commission).

If the naming or renaming proposal is not reflective of at least one of the criteria, after conferring with the City Manager's Office, the Department Head will express appreciation regarding the naming proposal to the proposer and explain the City's policy and the City's decision to decline the proposal.

3. After the Department Head forwards the proposal, the City Board, Commission, or Committee, shall review all naming proposals at a publicly noticed meeting and make a recommendation to the Governance and Ethics Committee.
4. The Governance and Ethics Committee shall review all naming recommendations at a publicly noticed meeting and deny the recommendation or make a recommendation to the City Council for final approval.
5. The City Council shall consider the naming recommendation at a publicly noticed meeting and will have final approval of all naming recommendations.

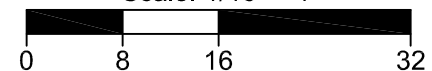
In the event the City Council denies a naming proposal, the City Manager's Office will express appreciation regarding the naming proposal to the proposer and explain the City's policy, and the City's decision to decline the proposal.

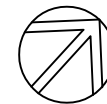
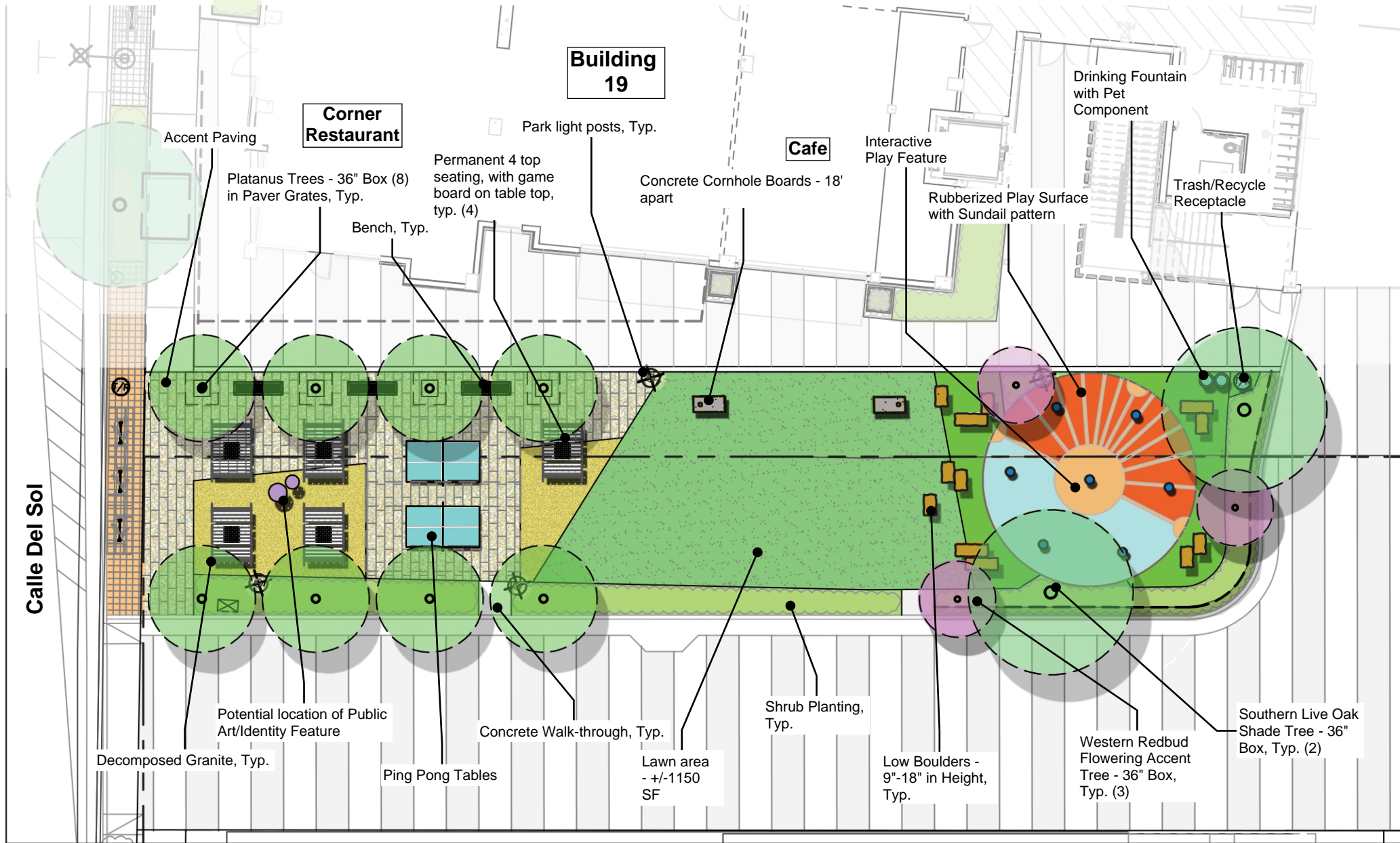
6. The City Council shall have the sole discretion to decide the naming of a facility.



North

Scale: 1/16" = 1'





North

Scale: 1/16" = 1'

