



# **Parks & Recreation Commission**

## **Westwood Oaks Park Playground Rehabilitation Project Presentation**

**January 18, 2022**



## Purpose of Presentation

- Summarize Community Input to date
  - On-site meeting
  - On-line survey
- Review Westwood Oaks Park Master Plan Update
- Receive Community and Commissioners' feedback on Option 1, 2 and 3
- Make recommendation to Council for approval.



# Background

- Council Goal: Enhance community sports, recreational and arts assets
- July 2021 – Design Contract
- September 21, 2021 – PRC #1
- September 24, 2021 – Online Survey
- September 25, 2021 – Onsite Meeting
- November 16, 2021 – PRC #2
- January 18, 2022 – PRC #3
- TBD – Council Review/Approval





# Design Guidelines

- Community Outreach & Input: Preference for Tree themed playground
- Integrate proposed design elements with existing park features, trees and vegetation
- Support the City's sustainability and age-friendly goals
- Buffer adjacent neighbors from park use impacts
- Use research-based principles for play and inclusionary/universal design, including seven elements of play that will accommodate additional community use
- Consider asset lifecycle maintenance costs
- Satisfy playground equipment grant guidelines



# Westwood Oaks Park Existing Master Plan



## List of proposed changes

1. Remove existing eucalyptus trees due to structural issues, safety concerns, and liabilities.
2. Remove existing entry tree due to structural issues.
3. Replace existing loop path and site paving to provide improved accessibility.
4. Renovate existing playground to meet accessibility codes and City's playground design standards.
5. Renovate existing half basketball court to reduce use conflicts.





# Community Input

## **Top 3 Existing Amenities:**

- Loop Path
- Play Area
- Quiet Seating Area



## **Top 5 Preferred Park Improvements:**

- Renovate and Expand Playground
- Maintain Grass Meadow
- Repair Loop Path
- Upgrade Drinking Fountain
- Improve Park Lighting

## **Park visit frequency:**

- Very Frequently – 2+ times a week
- Frequently – 1 time a week





**City of  
Santa Clara**  
The Center of What's Possible

# Community Input

**Preferred Playground Theme: Tree House**

**Play Element Equipment Preferences:**



**Balancing Play - a**



**Brachiating Play - c**



**Climber - a**



**Slide - c**



**Spinner - b**



**Swing - c**



**Music Play - c**



# Westwood Oaks Park – Master Plan Update

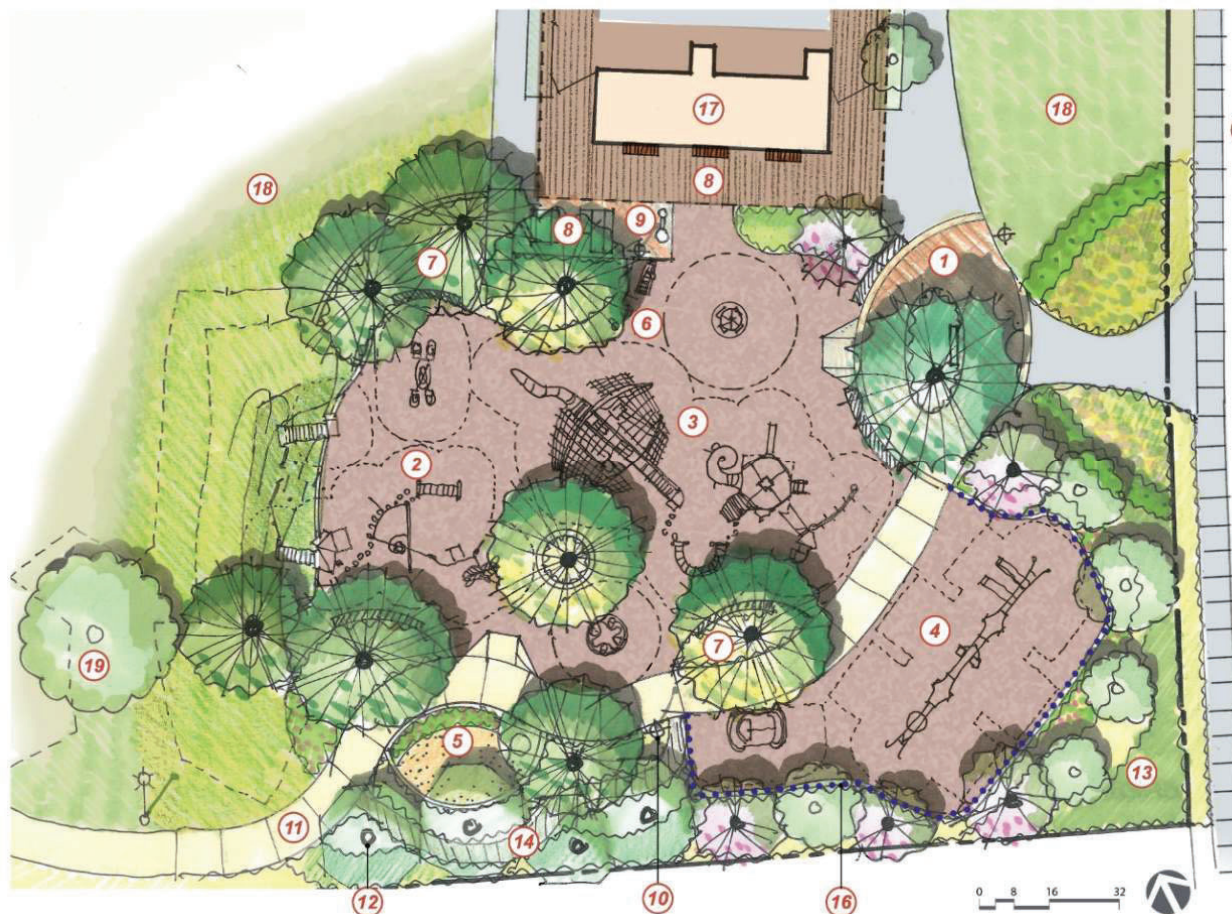


- ① New arrival Plaza with Specimen Tree
- ② New Play Area (6,000 SF +/-)
- ③ Re-configured berm as part of the play area
- ④ New Sand Play
- ⑤ New Seating Node & Upgraded Drinking Fountain/  
New Post Top Light
- ⑥ New Seat Wall
- ⑦ New Curb Cut ramp/ADA Parking
- ⑧ New Demonstration Garden with  
Drought Tolerant Species
- ⑨ Replace Existing Eucalyptus Trees  
with Drought-Tolerant Tree Species
- ⑩ Maintain Existing Multi-Use Meadow/ Existing Lawn
- ⑪ Repair Loop Path
- ⑫ Improve Park Lighting
- ⑬ Retain/Repair Existing Picnic Area With ADA Table  
Added
- ⑭ Renovate Half Basketball Court
- ⑮ New Driveway Cut
- ⑯ New Fitness Station
- ⑰ Existing Trees to be Preserved
- ⑱ Repair Existing Fence
- ⑲ Seating Node
- ⑳ Drought Tolerant





## Playground Schematic Design – Option 1



- 1 Arrival Plaza
- 2 New Playground: Age 2-5
- 3 New Playground: Age 6-12
- 4 Replace existing play area with new Swing Zone.
- 5 Sand Play
- 6 Music Play Zone
- 7 Planting cutout with shade trees and seat wall
- 8 New seating area
- 9 Upgrade drinking fountain
- 10 Improve park lighting
- 11 Repair concrete path
- 12 Replace Eucalyptus Tree with drought tolerant tree species
- 13 Demonstration Garden with drought tolerant species
- 14 Sensory Garden
- 15 New Curb Cut Ramp/ADA parking
- 16 New 42"H Fence
- 17 Existing Restroom Facility
- 18 Existing open meadow
- 19 Existing Tree to be preserved





## Playground Schematic Design – Option 2



- 1 Arrival Plaza
- 2 New Playground: Age 2-5
- 3 New Playground: Age 6-12
- 4 Replace existing play area with new Swing Zone.
- 5 Sand Play
- 6 Music Play Zone
- 7 Planting cutout with shade trees and seat wall
- 8 New seating area
- 9 Upgrade drinking fountain
- 10 Improve park lighting
- 11 Repair concrete path
- 12 Replace Eucalyptus Tree with drought tolerant tree species
- 13 Demonstration Garden with drought tolerant species
- 14 Sensory Garden
- 15 New Curb Cut Ramp/ADA parking
- 16 New 42"H Fence
- 17 Existing Restroom Facility
- 18 Existing open meadow
- 19 Existing Tree to be preserved





## Playground Schematic Design – Option 3



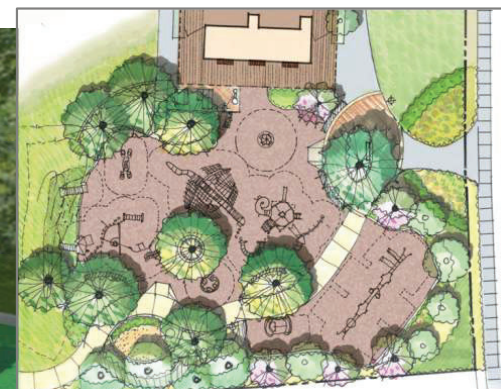
- 1 Arrival Plaza
- 2 New Playground: Age 2-5
- 3 New Playground: Age 6-12
- 4 Replace existing play area with new Swing Zone.
- 5 Sand Play
- 6 Music Play Zone
- 7 Planting cutout with shade trees and seat wall
- 8 New seating area
- 9 Upgrade drinking fountain
- 10 Improve park lighting
- 11 Repair concrete path
- 12 Replace Eucalyptus Tree with drought tolerant tree species
- 13 Demonstration Garden with drought tolerant species
- 14 Sensory Garden
- 15 New Curb Cut Ramp/ADA parking
- 16 New 42"H Fence
- 17 Existing Restroom Facility
- 18 Existing open meadow
- 19 Existing Tree to be preserved





**City of  
Santa Clara**  
The Center of What's Possible

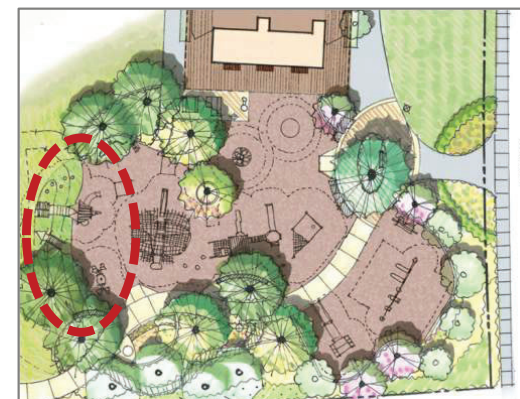
## Ages 2-5 Playground: **Option 1**







## Ages 2-5 Playground: **Option 2**

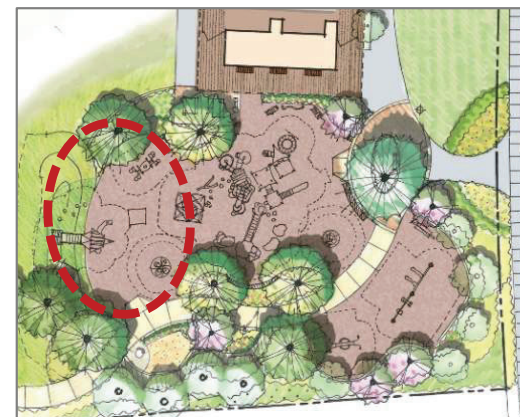






**City of  
Santa Clara**  
The Center of What's Possible

## Ages 2-5 Playground: **Option 3**

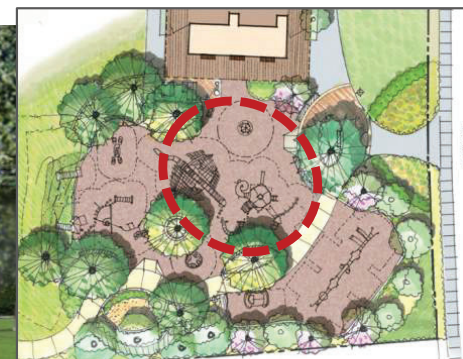






**City of  
Santa Clara**  
The Center of What's Possible

## Ages 6-12 Playground: **Option 1**

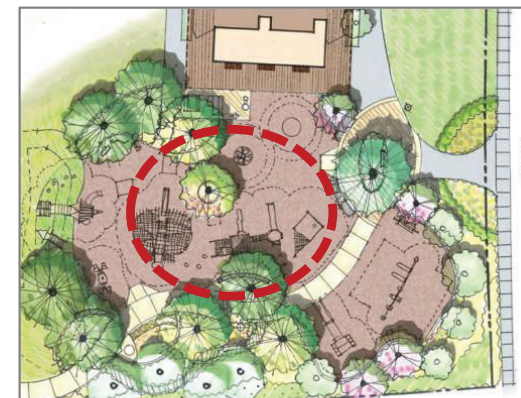






**City of  
Santa Clara**  
The Center of What's Possible

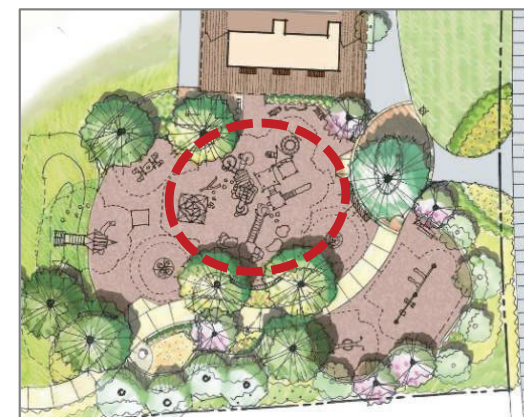
## Ages 6-12 Playground: **Option 2**







## Ages 6-12 Playground: **Option 3**







**City of  
Santa Clara**  
The Center of What's Possible

## Playground - Swing Zone: **Option 1**

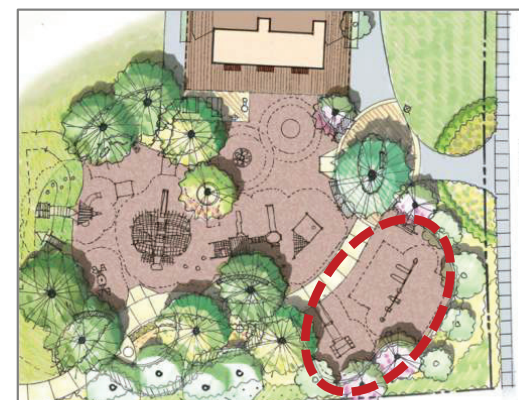






**City of  
Santa Clara**  
The Center of What's Possible

## Playground - Swing Zone: **Option 2**







**City of  
Santa Clara**  
The Center of What's Possible

## Playground - Swing Zone: **Option 3**







## Playground: Option 1

Elements of Play	Ages 2-5	Level of Play	Proposed Capacity	Ages 6-12	Level of Play	Proposed Capacity	TOTAL PROPOSED CAPACITY	EXISTING CAPACITY
Balancing	3	B=1 I=1 A=1	12	3	B=1 I=1 A=1	14	26	4
Sliding	1	B=0 I=1 A=0	3	3	B=1 I=1 A=1	9	12	4
Brachiating	1	B=0 I=0 A=1	3	2	B=1 I=1 A=0	6	9	2
Spinning	1	B=0 I=1 A=0	10	1	B=0 I=1 A=0	6	16	2
Climbing	3	B=1 I=1 A=0	10	8	B=2 I=4 A=2	40	50	9
Swinging	1	B=1 I=0 A=0	2	2	B=1 I=1 A=0	6	8	2
Running/Free Play		N/A			N/A			
<b>TOTAL:</b>	15		40 + Free Play	19		81 + Free Play	<b>121 + Free Play</b>	<b>23 + Free Play</b>
Inclusive Play Elements	4	B=1 I=3 A=0	23	9	B=4 I=5 A=0	29	52	

Level of play: B – Beginner; I – Intermediate; A – Advanced



## Playground **Option 2**

Elements of Play	Ages 2-5	Level of Play	Proposed Capacity	Ages 6-12	Level of Play	Proposed Capacity	TOTAL PROPOSED CAPACITY	EXISTING CAPACITY
Balancing	7	B=1 I=1 A=5	8	17	B=6 I=5 A=6	17	25	4
Sliding	2	B=1 I=1 A=0	2	4	B=2 I=1 A=1	4	6	4
Brachiating	1	B=1 I=0 A=0	1	2	B=0 I=1 A=1	4	5	2
Spinning	1	B=1 I=0 A=0	4	3	B=1 I=1 A=1	19	23	2
Climbing	5	B=1 I=2 A=2	13	16	B=6 I=4 A=6	26	39	9
Swinging	3	B=3 I=0 A=0	5	7	B=3 I=2 A=2	9	14	2
Sensory	9	B=5 I=2 A=2	27	11	B=7 I=3 A=1	34	61	
<b>TOTAL:</b>	15		60 + Free Play	60		113 + Free Play	<b>173 + Free Play</b>	<b>23 + Free Play</b>
Inclusive Play Elements				15	B=9 I=4 A=2	32 (including ages 2-5 and 6-12)	32	

Level of play: B – Beginner; I – Intermediate; A – Advanced





## Playground **Option 3**

Elements of Play	Ages 2-5	Level of Play	Proposed Capacity	Ages 6-12	Level of Play	Proposed Capacity	TOTAL PROPOSED CAPACITY	EXISTING CAPACITY
Balancing	7	B=1 I=5 A=1	9	12	B=3 I=8 A=1	15	24	4
Sliding	2	B=1 I=1 A=0	2	4	B=1 I=1 A=2	8	10	4
Brachiating	0	B=0 I=0 A=0	0	2	B=0 I=1 A=1	4	4	2
Spinning	2	B=1 I=1 A=0	19	2	B=1 I=1 A=0	19	38	2
Climbing	4	B=2 I=1 A=1	8	11	B=1 I=6 A=5	53	61	9
Swinging	4	B=3 I=1 A=0	9	8	B=3 I=3 A=2	13	22	2
Sensory	8	B=8 I=0 A=0	21				21	
<b>TOTAL:</b>	27		68 + Free Play	47		112 + Free Play	<b>180 + Free Play</b>	<b>23 + Free Play</b>
Inclusive Play Elements				14	B=5 I=6 A=3	30 (including ages 2-5 and 6-12)	30	

Level of play: B – Beginner; I – Intermediate; A – Advanced



# Parks & Recreation Commission

- Comments, Feedback & Questions?
- Recommendation that Council approve
  - 1) Westwood Oaks Park Master Plan Update
  - 2) Preferred Playground Schematic Design for
    - Ages 2-5
    - Ages 6-12
    - Swing Zone
  - 3) Measure R draft Ordinance