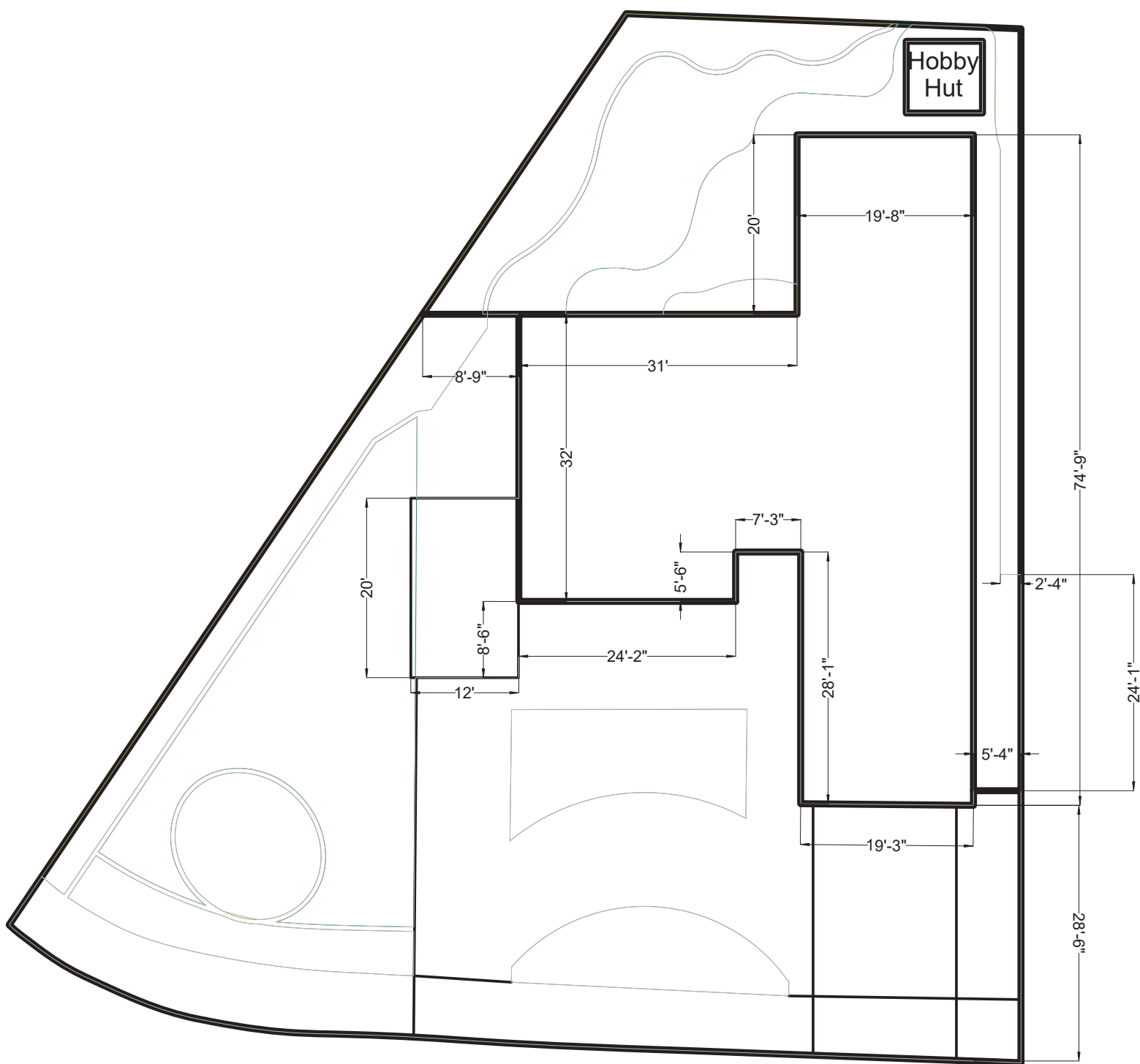
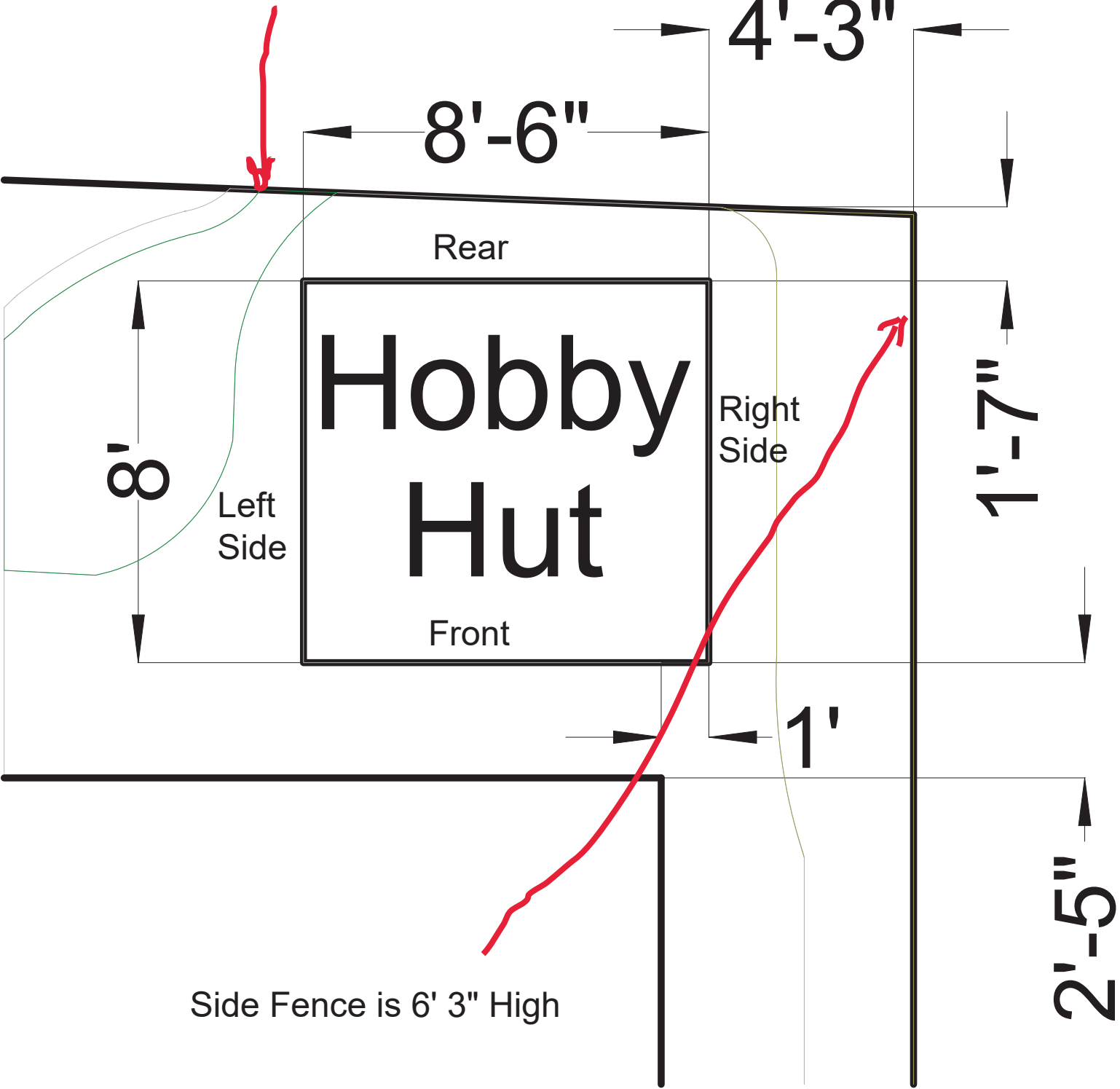


Main House Dimensions

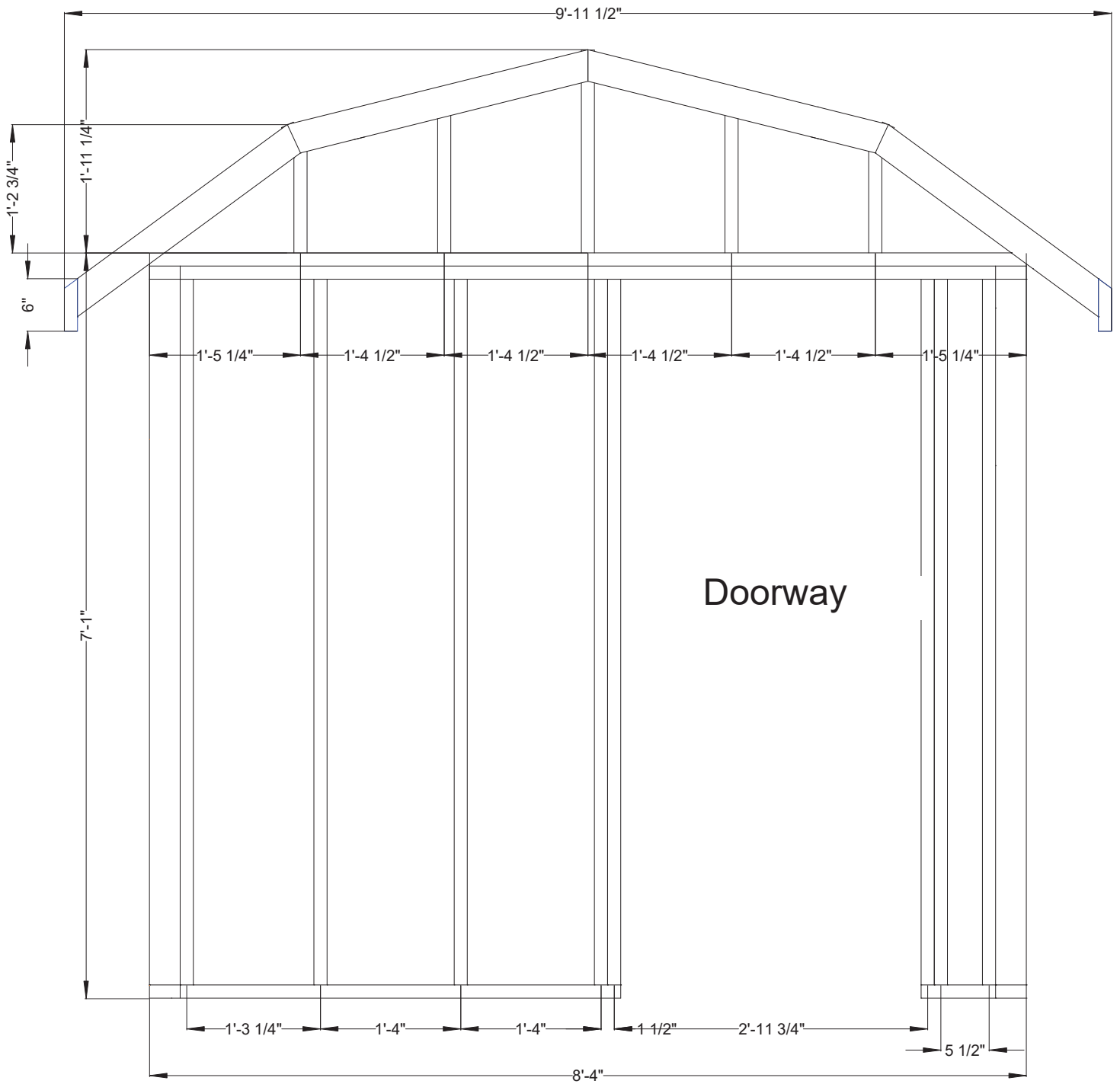


Back Fence is 6' 10" high



Side Fence is 6' 3" High

Front View

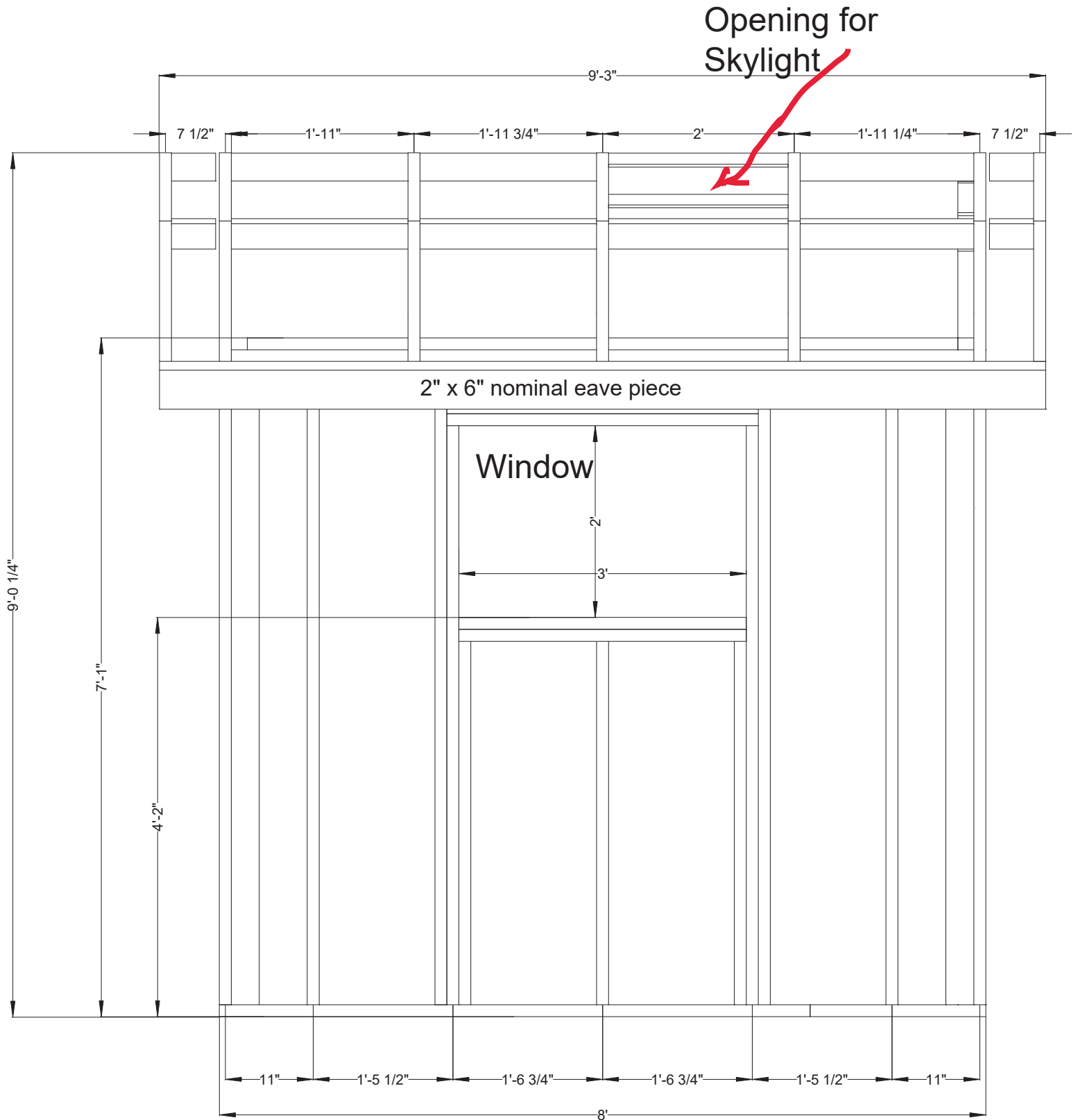


Unless otherwise noted, all lumber is 2x4 nominal
Base pieces are pressure treated

Towards side fence -->

1/2" sheeting not shown

Left Side View



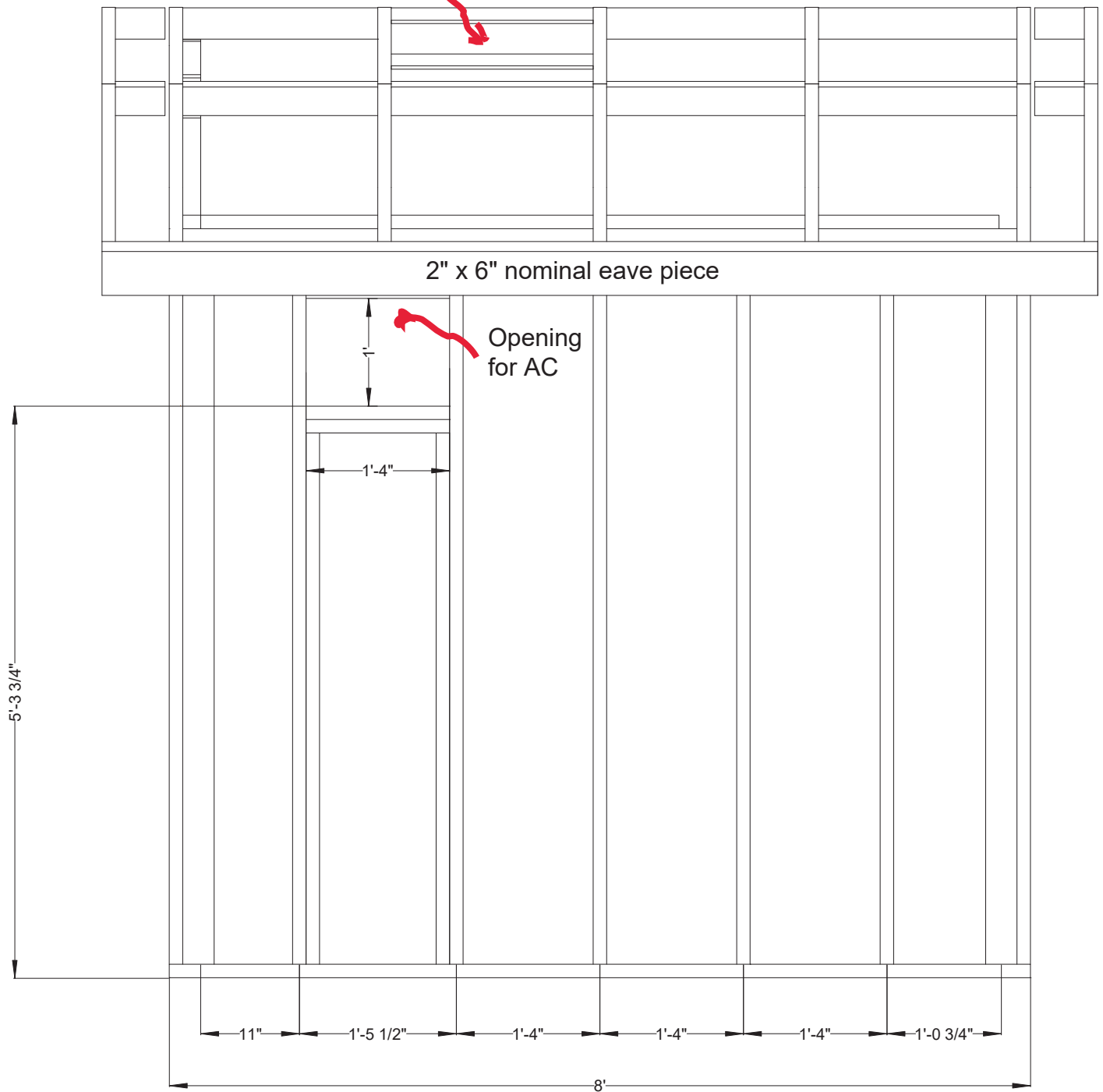
Unless otherwise noted, all lumber is 2x4 nominal
Base pieces are pressure treated

Toward House -->
<-- Toward Rear Fence

1/2" sheeting not shown

Right Side View

Opening for
Skylight

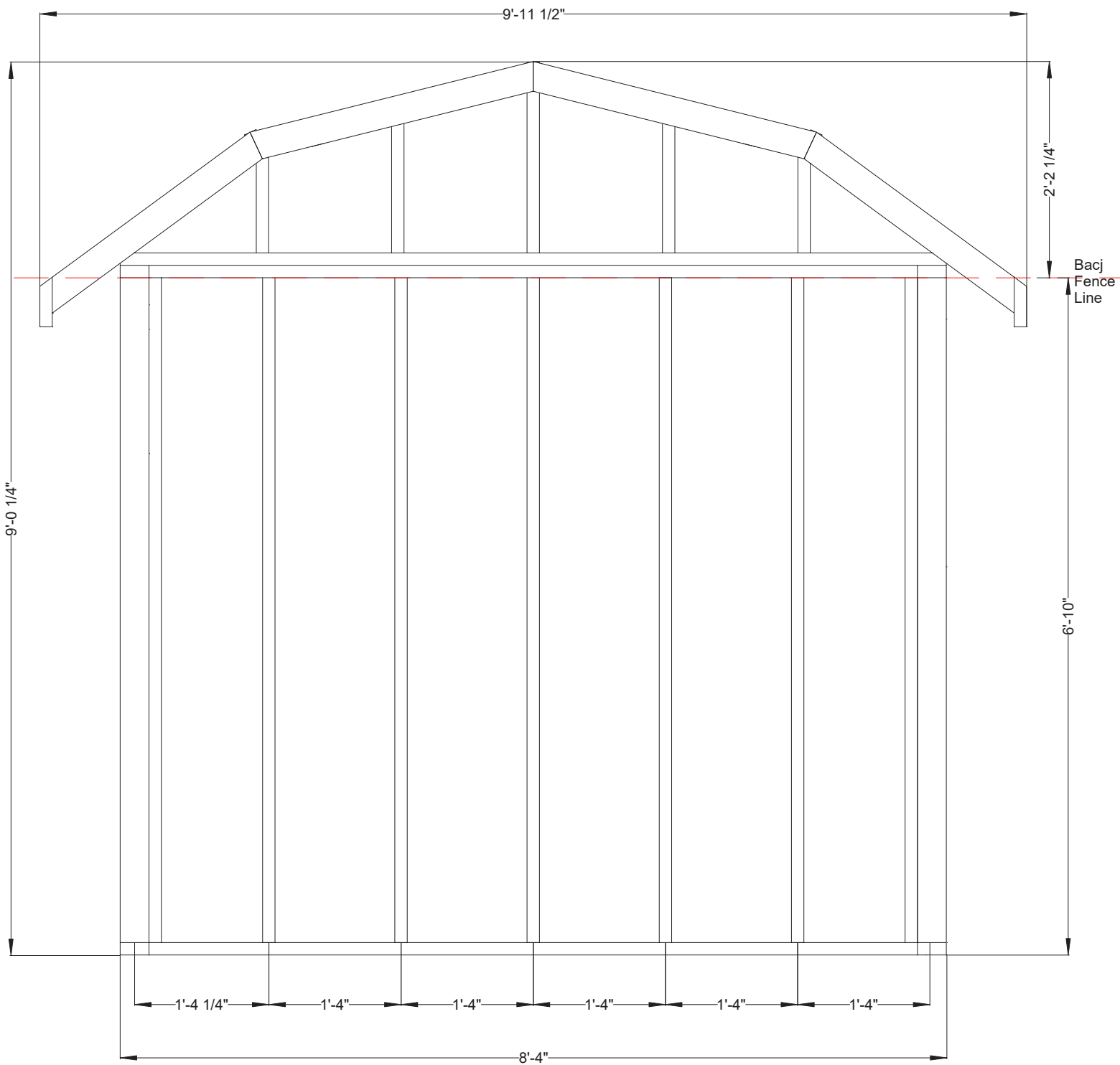


Unless otherwise
noted, all lumber is
2x4 nominal
Base pieces are
pressure treated

<-- Toward House
Toward Rear Fence -->

1/2" sheeting
not shown

Rear View



Unless otherwise
noted, all lumber is
2x4 nominal
Base pieces are
pressure treated

<-- Towards Side Fence

1/2" sheeting not
shown

