

Attachment 1

Project Data

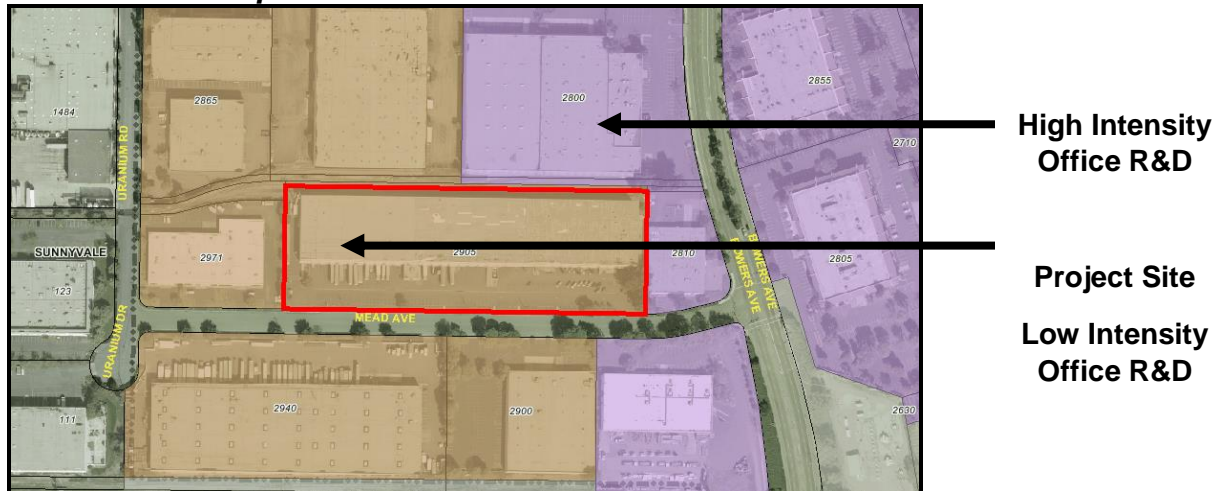
	Existing	Proposed
General Plan Designation	Low Intensity Office R&D	Same
Zoning District	Light Industrial (ML)	Same
Land Use	Industrial – Indoor Recreational	Same
Lot Size	5.91 acres	Same
Building Square Footage (sf.)	63,087	Same
Parking	152	Same

Site Location and Context

Surrounding Land Uses:

The project site is located in an industrial sector of the City and is surrounded by office and light industrial development. Properties to the north are offices for Lockheed Martin and a lumber yard and to the east are offices for two businesses. A large warehouse building is located to the southwest with a single tenant (3-Way) and a smaller warehouse with Bay Area Exhibits and Sky High Sports (a commercial recreation use) is located to the southeast. The property immediately west of the project site is an office use.

General Plan Map



Zoning Map

